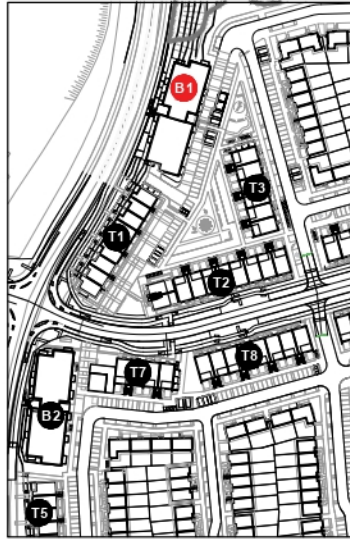
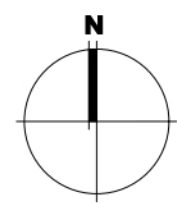


DRAWING KEY		
APARTMENT TYPES**		
unit type	No. of beds	No. of storeys/No. of units
Type A1	- 1 bed	1 storey/ 16
Type A2	- 1 bed	1 storey/ 08
Type B2	- 2 bed	1 storey/ 10
Type B2.1	- 2 bed	1 storey/ 06
Type B2.2	- 2 bed	1 storey/ 02
Type B3	- 2 bed	1 storey/ 08
		50
CAR PARKING***		
	SPACES PROVIDED	
Standard car spaces	40	
UA car spaces	02	
EV charging points	08	
	42	
BIKE PARKING***		
	SPACES PROVIDED	
Residents	Standard bike spaces	126
	Cargo bike spaces	03
Visitors	Standard bike spaces	24
	Cargo bike spaces	10
		163
NOTES:		
* Refer to drawings 6268-P-200 to 6268-P-205 for duplex floorplan details		
** Refer to drawings 6268-P-600 to 6268-P-602 for apartment units floorplan details		
*** Refer to drawing 6268-P-008 for parking strategy details		



01 Keyplan
P-302 1:2000



02 Block 01 Level 00 Floor Plan
P-302 1:200



03 Block 01 Level 01 Floor Plan
P-302 1:200

Compliance Submission - Proposed Apt Numbering Herons Lock House Building (01-50)

<small>Notes:</small> Copyright Reserved Work in figure dimensions only. Do not scale drawing. The contractor is responsible for checking all levels and dimensions on-site and shall refer all discrepancies to the Architect. Where appropriate, in details of c.a. structure, or mechanical and electrical details, see Engineer's drawings. Proprietary keys shall be fixed in strict accordance with manufacturers instructions. Sizes of proprietary items shall be checked with manufacturer. The contractor shall be responsible for the coordination of structure, finishes and services.	Issue Status Progress Planning Application Fire Cert Disability Cert Tender Construction As Built Information Only	No. 1 Date 01/11/23 Revision RFI Submission	IRI/MS VB	Project Adamstown Extension - Clonburris SDZ Residential Development Drawing Title Apartment Block 01 - Proposed L00-L01 floor plans Drawing No 6268-P-300a Scale 1:200@A1 Rev 00 Drawn RT Date 03/10/23	
	<small>Submitted to: Council of Clonburris SDZ, 10/03/2023. Drawing No: 6268-P-300a. Scale: 1:200@A1. Rev: 00. Date: 03/10/23.</small>				

DRAWING KEY

APARTMENT TYPES**			
unit type	No. of beds	No. of storeys	No. of units
Type A1	- 1 bed	1 storey	16
Type A2	- 1 bed	1 storey	08
Type B2	- 2 bed	1 storey	10
Type B2.1	- 2 bed	1 storey	06
Type B2.2	- 2 bed	1 storey	02
Type B3	- 2 bed	1 storey	08
50			

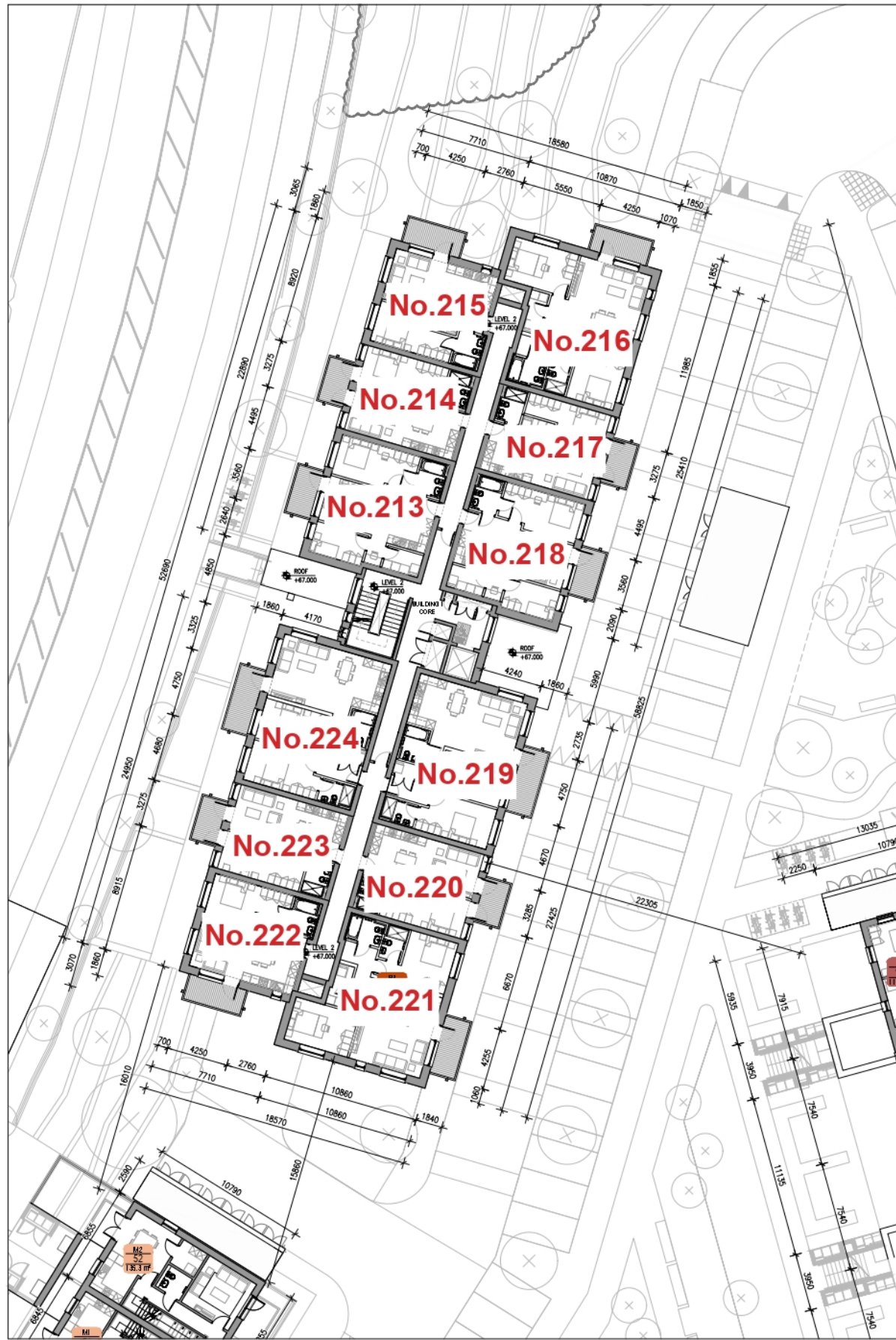
CAR PARKING***		SPACES PROVIDED
Standard car spaces		40
UA car spaces		02
EV charging points		08
		42

BIKE PARKING***		SPACES PROVIDED
Residents	Standard bike spaces	126
	Cargo bike spaces	03
Visitors	Standard bike spaces	24
	Cargo bike spaces	10
		163

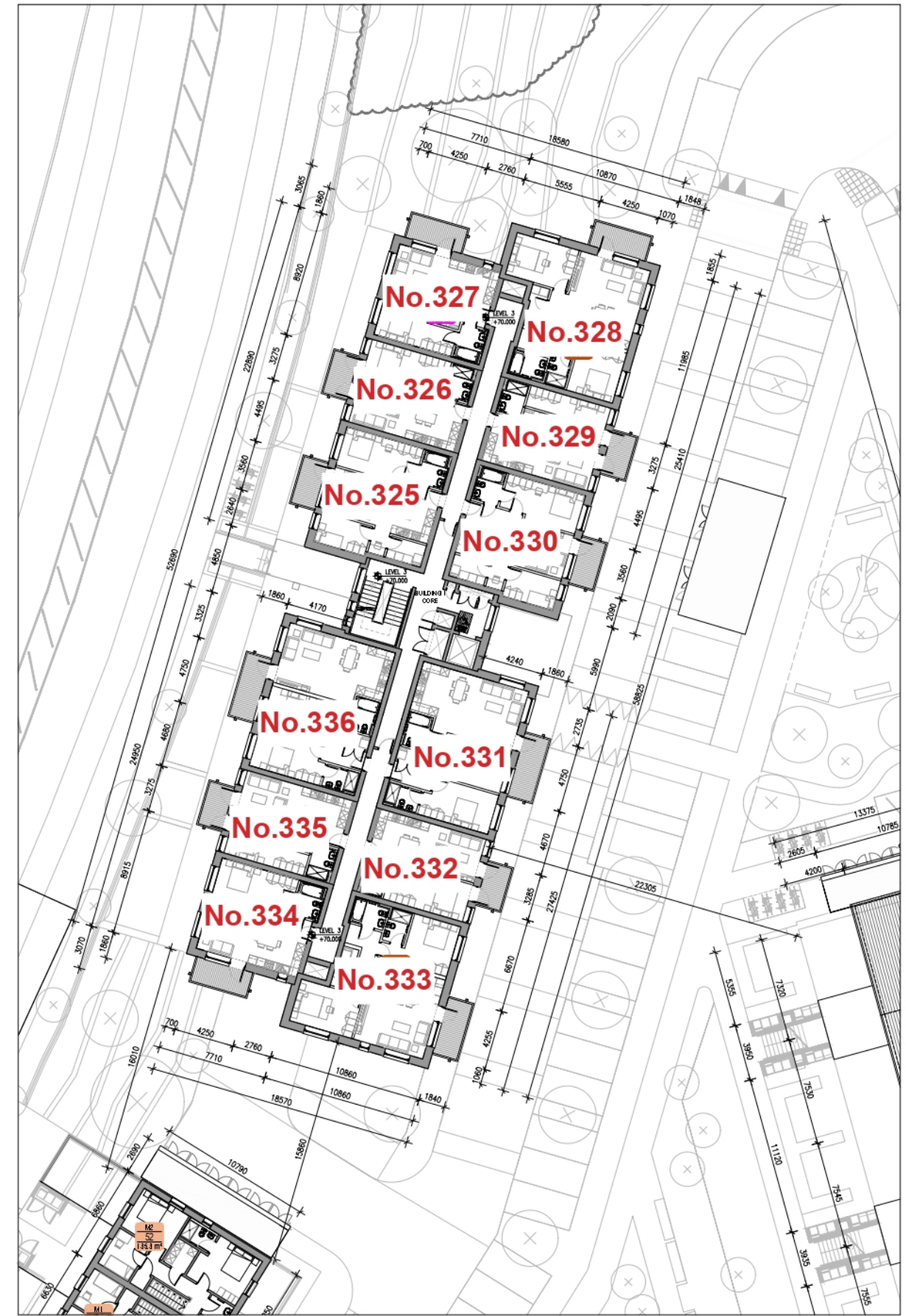
NOTES:
 * Refer to drawings 6268-P-200 to 6268-p-205 for duplex floorplan details
 ** Refer to drawings 6268-P-600 to 6268-P-602 for apartment units floorplan details
 *** Refer to drawing 6268-P-008 for parking strategy details



01 Keyplan
P-301 1:2000



02 Block 01 Level 02 Floor Plan
P-301 1:200



03 Block 01 Level 03 Floor Plan
P-301 1:200

Compliance Submission - Proposed Apt Numbering Herons Lock House Building (01-50)

Notes:
 Copyright Reserved
 Views to agreed dimensions only. Do not scale drawings.
 The contractor is responsible for checking all levels and dimensions on site and shall refer all discrepancies to the Architect.
 Where appropriate, details of c/c, structure, or mechanical and electrical details, see Engineers drawing.
 Proprietary items shall be fixed in strict accordance with manufacturers instructions.
 Sizes of proprietary items shall be checked with manufacturers.
 The contractor shall be responsible for the coordination of structure, timber and services.

Issue Status	Progress
Planning Application	■
Fire Cert	
Disability Cert	
Tender	
Construction	
As Built	
Information Only	

No.	Date	Revision
1	01/11/23	RFI Submission

1:01:18	1:01:18

Project		Adamstown Extension - Clonburris SDZ Residential Development	
Drawing Title	Apartment Block 01 - Proposed L02 - L03 floor plans		
Drawing No	6268-P-301a		
Scale	1:200@A1	Rev	00
Drawn	RT	Date	03/10/23



DRAWING KEY

APARTMENT TYPES**

unit type	No. of beds	No. of storeys	No. of units
Type A1	- 1 bed	1 storey	16
Type A2	- 1 bed	1 storey	08
Type B2	- 2 bed	1 storey	10
Type B2.1	- 2 bed	1 storey	06
Type B2.2	- 2 bed	1 storey	02
Type B3	- 2 bed	1 storey	08
			50

CAR PARKING* SPACES PROVIDED**

Standard car spaces	40
UA car spaces	02
EV charging points	08
	42

BIKE PARKING* SPACES PROVIDED**

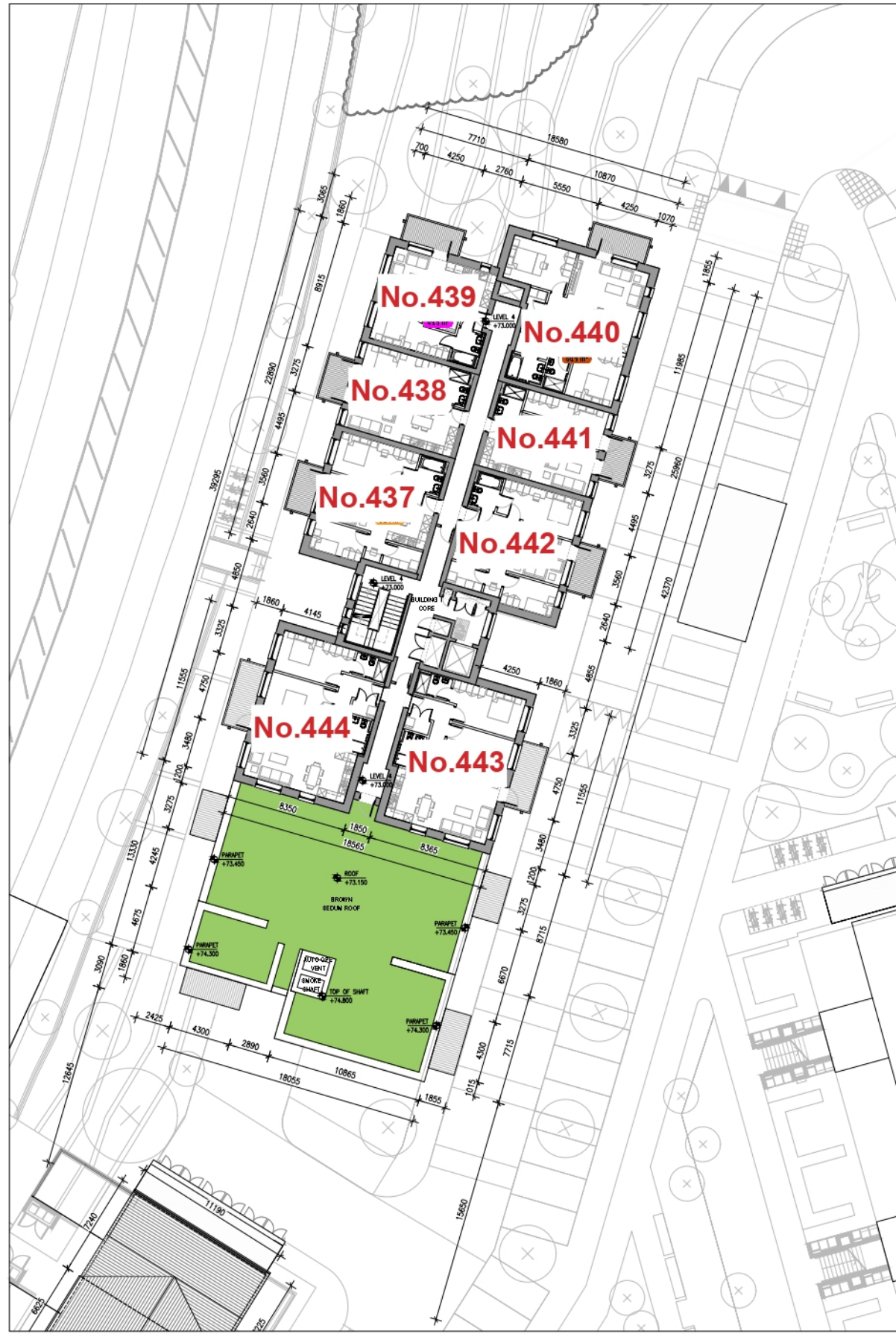
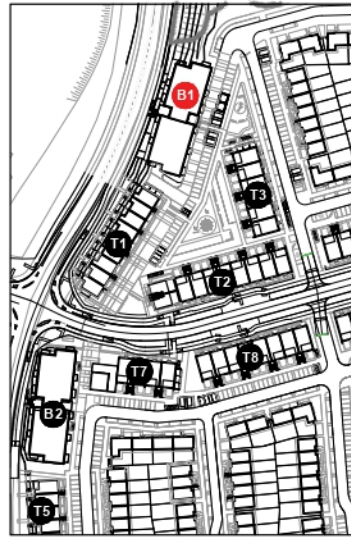
Residents	Standard bike spaces	126
	Cargo bike spaces	03
Visitors	Standard bike spaces	24
	Cargo bike spaces	10
		163

NOTES:

* Refer to drawings 6268-P-200 to 6268-p-205 for duplex floorplan details

** Refer to drawings 6268-P-600 to 6268-P-602 for apartment units floorplan details

*** Refer to drawing 6268-P-008 for parking strategy details



Compliance Submission - Proposed Apt Numbering Herons Lock House Building (01-50)

- NOTES:**
- Copyright Reserved
 - Work to specific dimensions only. Do not scale drawing
 - The contractor is responsible for checking all levels and dimensions on site and shall refer all discrepancies to the Architect
 - Where appropriate, for details of structure, or mechanical and electrical details, see Engineers drawings
 - Proprietary items shall be fixed in strict accordance with manufacturers instructions
 - Size of proprietary items shall be checked with manufacturer
 - The contractor shall be responsible for the coordination of structure, finishes and services

Issue Status	Progress
Planning Application	<input checked="" type="checkbox"/>
Fire Cert	<input type="checkbox"/>
Disability Cert	<input type="checkbox"/>
Tender	<input type="checkbox"/>
Construction	<input type="checkbox"/>
As Built	<input type="checkbox"/>
Information Only	<input type="checkbox"/>

No.	Date	Revision	Initials
1	01/11/23	RFI Submission	VB

Project	Adamstown Extension - Clonburris SDZ Residential Development
Drawing Title	Apartment Block 01 - Proposed L04 - L05 floor plans
Drawing No	6268-P-302a
Scale	1:200@A1
Rev	00
Drawn	RT
Date	03/10/23



DRAWING KEY

APARTMENT TYPES**

unit type	No. of beds	No. of storeys	No. of units
Type A1	- 1 bed	1 storey	21
Type A2	- 1 bed	1 storey	10
Type B1	- 2 bed	1 storey	12
Type B2.1	- 2 bed	1 storey	10
Type B2.2	- 2 bed	1 storey	00
Type B3	- 2 bed	1 storey	11
			64

CAR PARKING* SPACES PROVIDED**

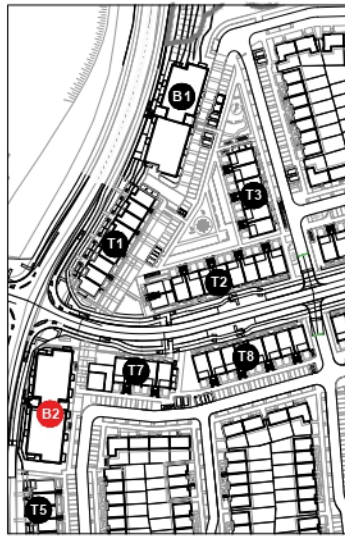
Standard car spaces	20
UA car spaces	01
EV charging points	04
	21

BKE PARKING* SPACES PROVIDED**

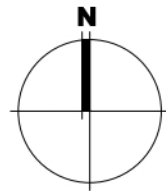
Residents	Standard bike spaces	100
	Cargo bike spaces	03
Visitors	Standard bike spaces	24
	Cargo bike spaces	05
		132

NOTES:

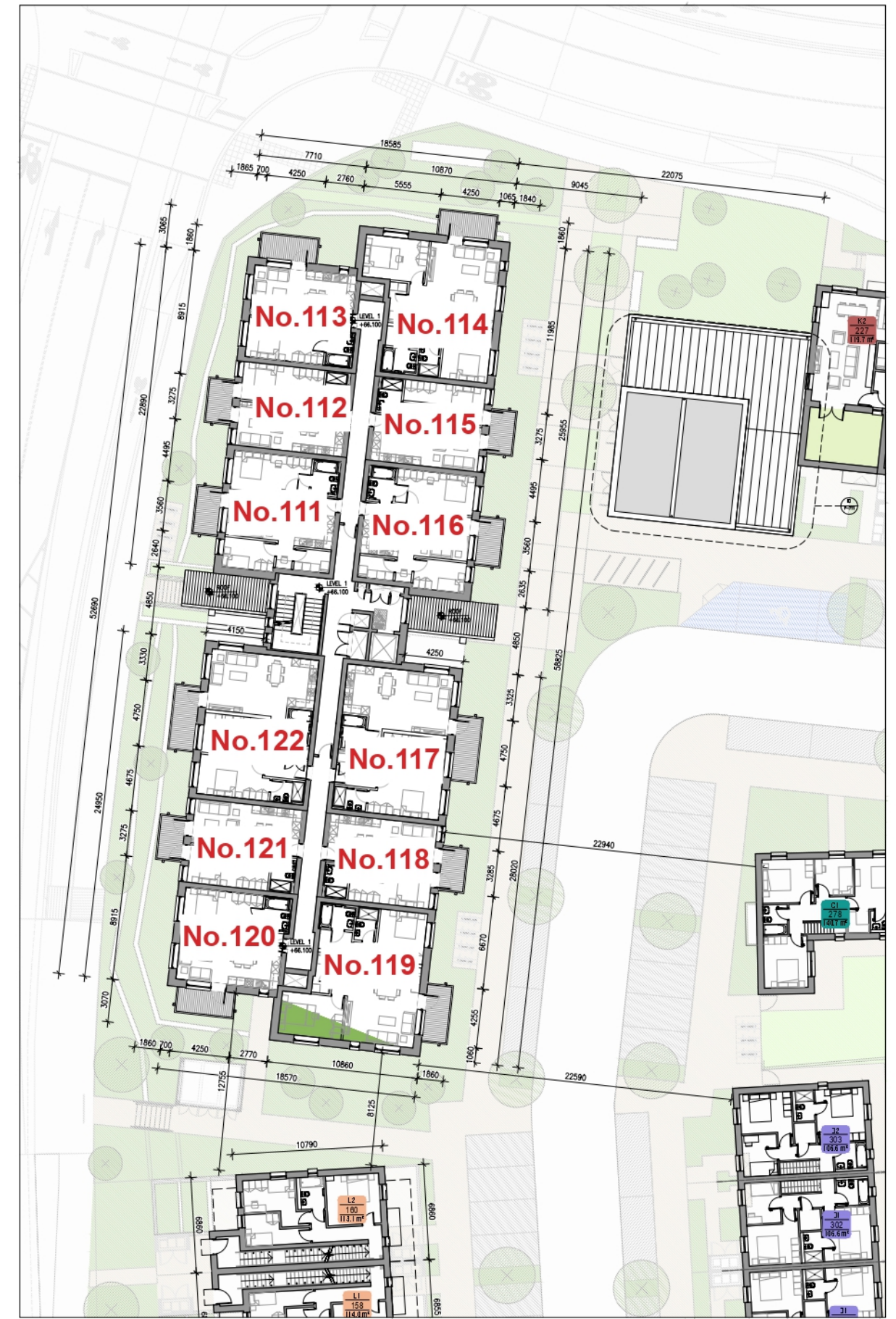
- * Refer to drawings 6268-P-200 to 6268-p-205 for duplex floorplan details
- ** Refer to drawings 6268-P-600 to 6268-P-601 for apartment units floorplan details
- *** Refer to drawing 6268-P-008 for parking strategy details



01 Keyplan
P-300 1:2000



02 Block 02 Level 00 Floor Plan
P-304 1:200



03 Block 02 Level 01 Floor Plan
P-304 1:200

Compliance Submission Proposed Apt Numbering - Herons Lock Manor Building (01-64)

Copyright Reserved
All rights reserved. No part of this drawing may be reproduced, stored in a retrieval system, or transmitted in any form or by any means, electronic, mechanical, photocopying, recording, or by any information storage and retrieval system, without the prior written permission of the architect.
This drawing is the property of the architect and shall remain confidential. It is to be used only for the project and site for which it is prepared. It is not to be used for any other purpose without the prior written permission of the architect.
The architect is not responsible for the construction of the building or for any other matters.

Issue Status	Progress
Planning Application	■
Fire Cert	
Disability Cert	
Tender	
Construction	
As Built	

No.	Date	Revision	Initials
1	01/11/23	RPT Submission	VE

Project	Drawing Title	Drawing No.	Scale	Rev	Drawn	Date
Adamstown Extension - Clonburris SDZ Residential Development	Apartment Block 02 - Proposed L00 - L01 floor plans	6268-P-304	1:200@A1	00	RT	03/10/23

Project		Adamstown Extension - Clonburris SDZ Residential Development
Drawing Title		Apartment Block 02 - Proposed L00 - L01 floor plans
Drawing No.		6268-P-304
Scale	1:200@A1	
Rev	00	
Drawn	RT	
Date	03/10/23	



DRAWING KEY

APARTMENT TYPES**

unit type	No. of beds	No. of storeys	No. of units
Type A1	- 1 bed	1 storey	21
Type A2	- 1 bed	1 storey	10
Type B1	- 2 bed	1 storey	12
Type B2.1	- 2 bed	1 storey	10
Type B2.2	- 2 bed	1 storey	00
Type B3	- 2 bed	1 storey	11
			64

CAR PARKING* SPACES PROVIDED**

Standard car spaces	20
UA car spaces	01
EV charging points	04
	21

BIKE PARKING* SPACES PROVIDED**

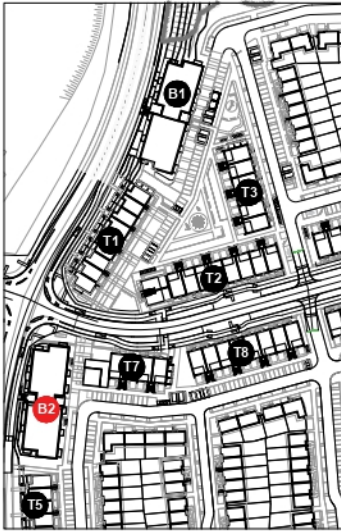
Residents	Standard bike spaces	100
	Cargo bike spaces	03
Visitors	Standard bike spaces	24
	Cargo bike spaces	05
		132

NOTES:

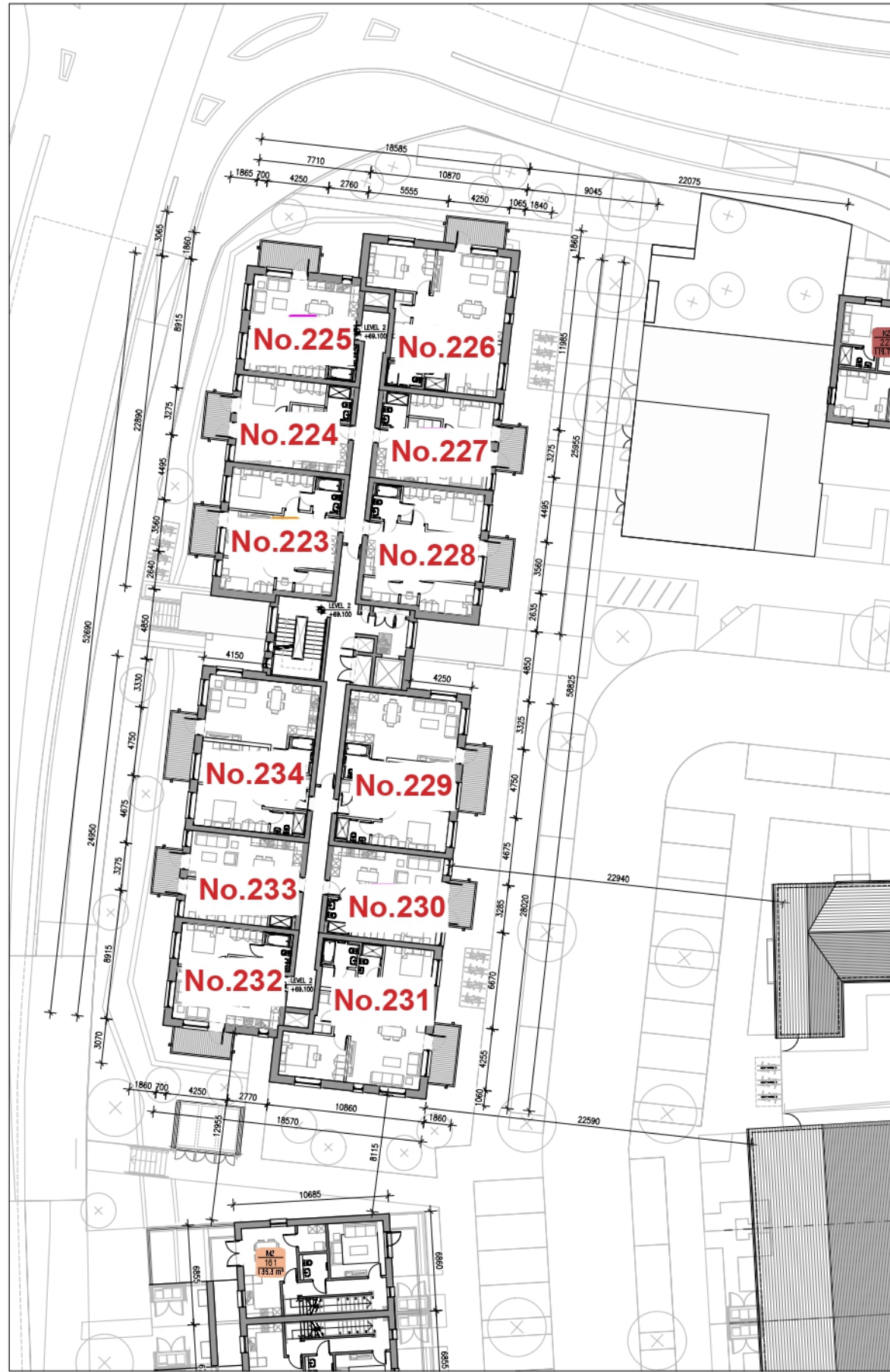
* Refer to drawings 6268-P-200 to 6268-p-205 for duplex floorplan details

** Refer to drawings 6268-P-600 to 6268-P-601 for apartment units floorplan details

*** Refer to drawing 6268-P-008 for parking strategy details



01 Keyplan
P-305 1:2000



02 Block 02 Level 02 Floor Plan
P-305 1:200



03 Block 02 Level 03 Floor Plan
P-305 1:200

Compliance Submission Proposed Apt Numbering - Herons Lock Manor Building (01-64)

Notes:
 1. Copyright Reserved.
 2. Work in figures/dimensions only. Do not take drawing.
 3. The contractor is responsible for checking all levels and dimensions on-site and shall refer all discrepancies to the Jobholder.
 4. Where appropriate, for details of c/s, structure, or mechanical and electrical details, see Engineers drawing.
 5. Proprietary items shall be fixed in strict accordance with manufacturers instructions.
 6. Sizes of proprietary items shall be checked with manufacturers.
 7. The contractor shall be responsible for the coordination of site works, including site protection.
 8. Approved Plans No. 18046324 14.41.18

Issue Status	Progress
Planning Application	■
Fire Cert	
Disability Cert	
Tender	
Construction	
As Built	

No.	Date	Revision	Initials
1	01/11/23	RH Submission	VB

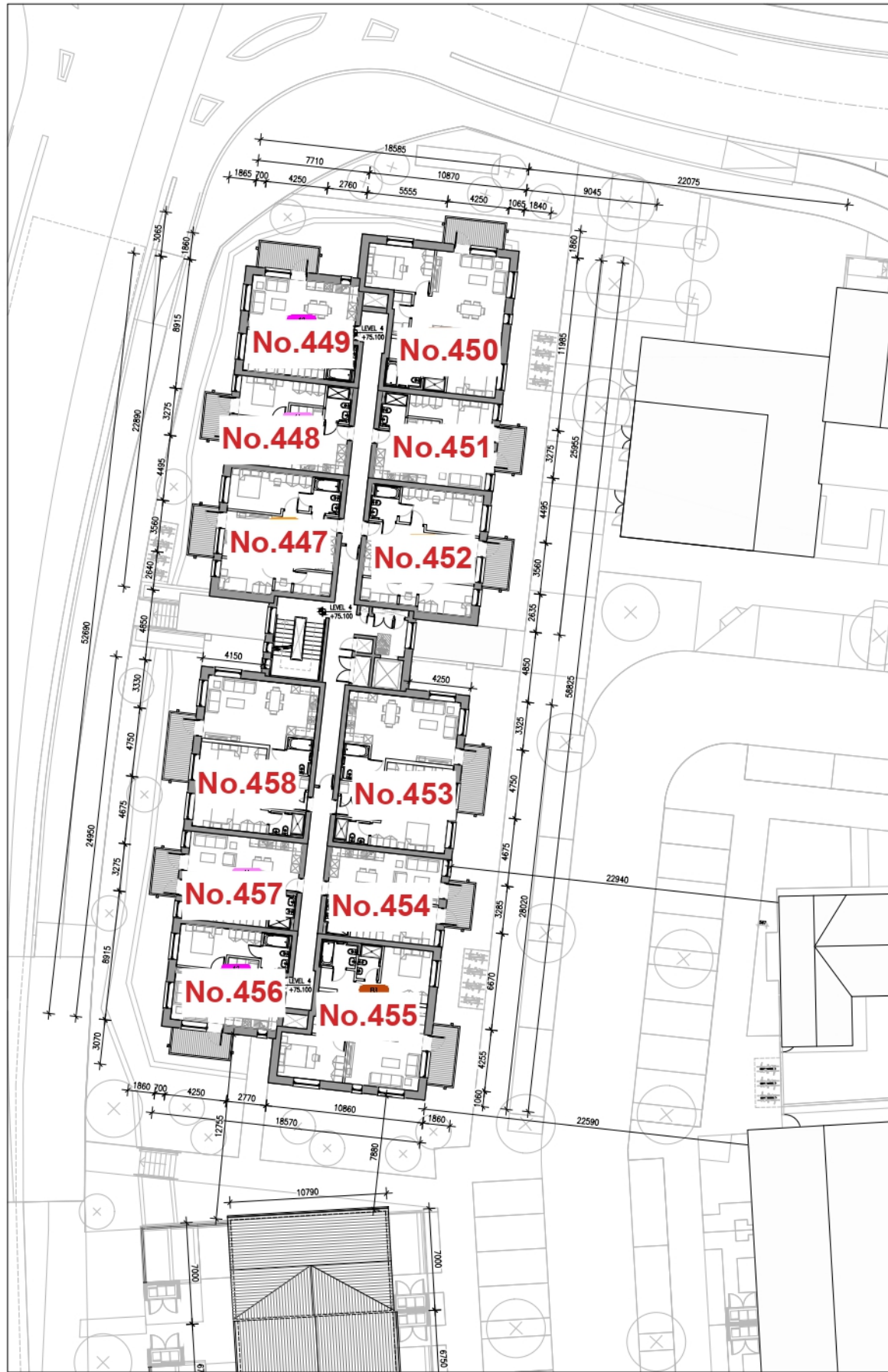
Project	Adamstown Extension - Clonburris SDZ Residential Development
Drawing Title	Apartment Block 02 - Proposed L02 - L03 floor plans
Drawing no	6268-P-305
Scale	1:200@A1
Rev	00
Drawn	RT
Date	03/10/23



DRAWING KEY			
APARTMENT TYPES**			
unit type	No. of beds	No. of storeys	No. of units
Type A1	- 1 bed	1 storey	21
Type A2	- 1 bed	1 storey	10
Type B1	- 2 bed	1 storey	12
Type B2.1	- 2 bed	1 storey	10
Type B2.2	- 2 bed	1 storey	00
Type B3	- 2 bed	1 storey	11
			64
CAR PARKING*** SPACES PROVIDED			
Standard car spaces			20
UA car spaces			04
EV charging points			04
			21
BIKE PARKING*** SPACES PROVIDED			
Residents	Standard bike spaces		100
	Cargo bike spaces		03
Visitors	Standard bike spaces		24
	Cargo bike spaces		05
			132
NOTES:			
* Refer to drawings 6268-P-200 to 6268-p-205 for duplex floorplan details			
** Refer to drawings 6268-P-600 to 6268-P-601 for apartment units floorplan details			
*** Refer to drawing 6268-P-008 for parking strategy details			



01 Keyplan
P-305 1:2000



02 Block 02 Level 04 Floor Plan
P-306 1:200



03 Block 02 Level 05 Floor Plan
P-306 1:200

Compliance Submission Proposed Apt Numbering - Herons Lock Manor Building (01-64)

Notes	Issue Status
1. Copyright Reserved	Progress
2. Work in figure dimensions only. Do not scale drawing	Planning Application
3. The contractor is responsible for checking all levels and dimensions on-site and shall refer all discrepancies to the Architect	Fire Cert
4. Where appropriate for details refer to structural or mechanical and electrical details. See Engineers drawings	Disability Cert
5. Particulars for materials to be decided in consultation with the contractor and the Architect	Tender
6. Size of proposed glass panels shall be checked on site	Construction
7. The contractor shall be responsible for the reconstruction of windows, doors and services	As Built

No.	Date	Revision	IR/BA
1	01/11/23	RFI Submission	VB

Project	Drawing Title	Drawing no.	Scale	Rev	Drawn	Date
Adamstown Extension - Clonburris SDZ Residential Development	Apartment Block 02 - Proposed L04 - L05 floor plans	6268-P-306	1:200@A1	00	RT	03/10/23

bkdarchitects
BUREAU OF ARCHITECTURE