



**Image 1_Ibstock_New Ivanhoe Cream Brick
_White Render**



Image 3_Ibstock_New Ivanhoe Cream Brick

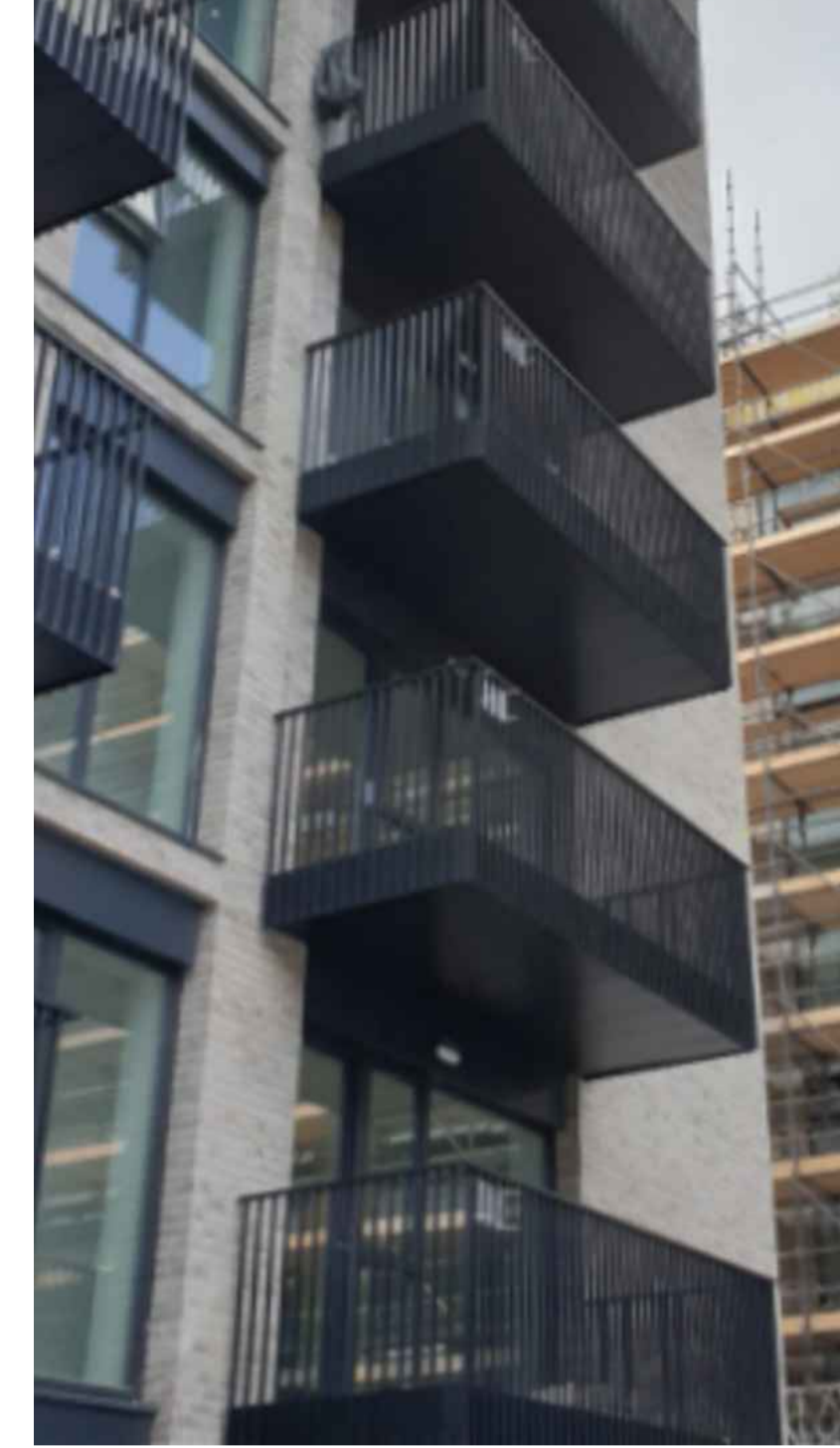
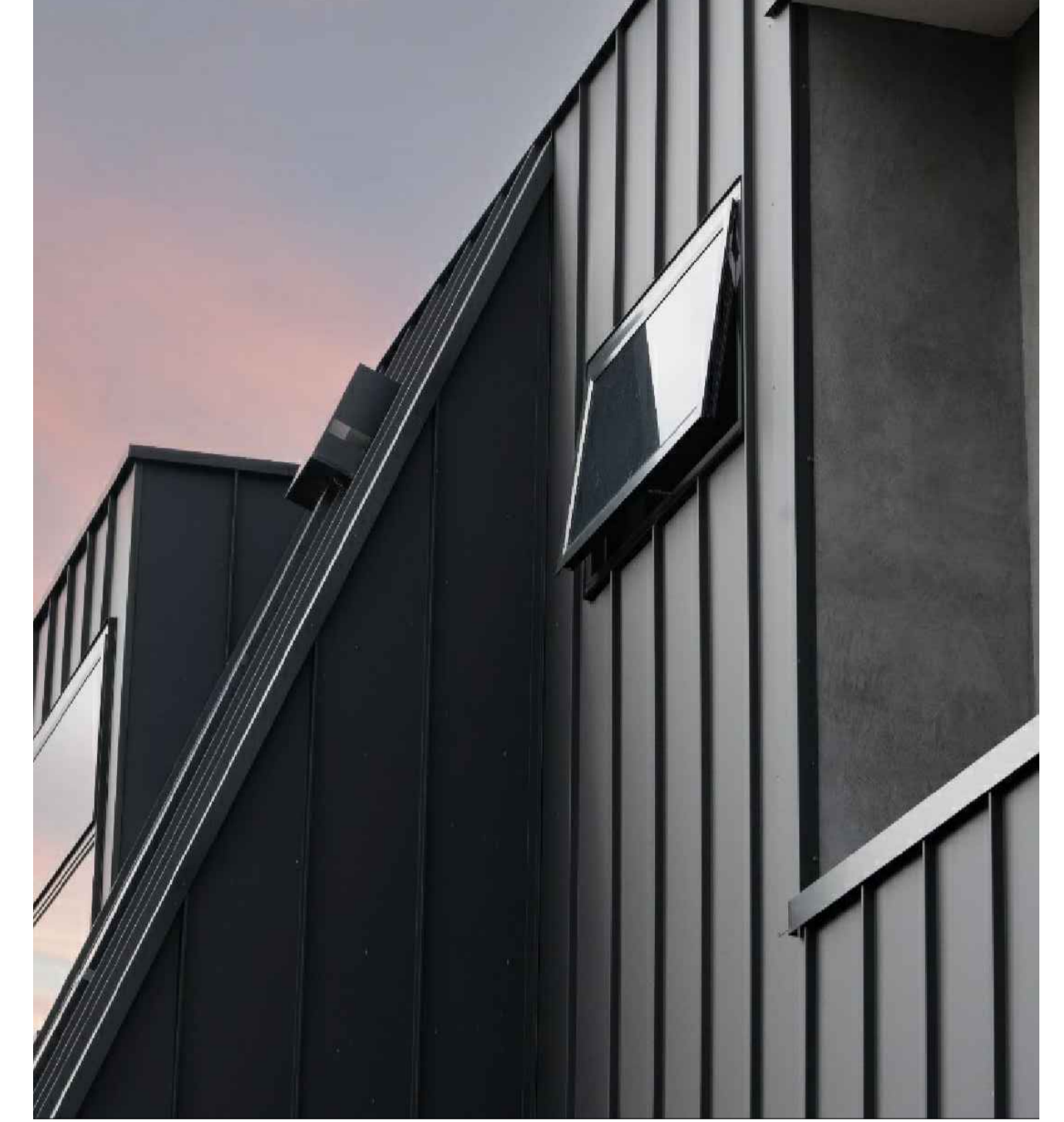


Image 6_Sapphire Balcony



**Image 8_Vertical / Roof Cladding
RAL Colour 7016 Anthracite Grey**

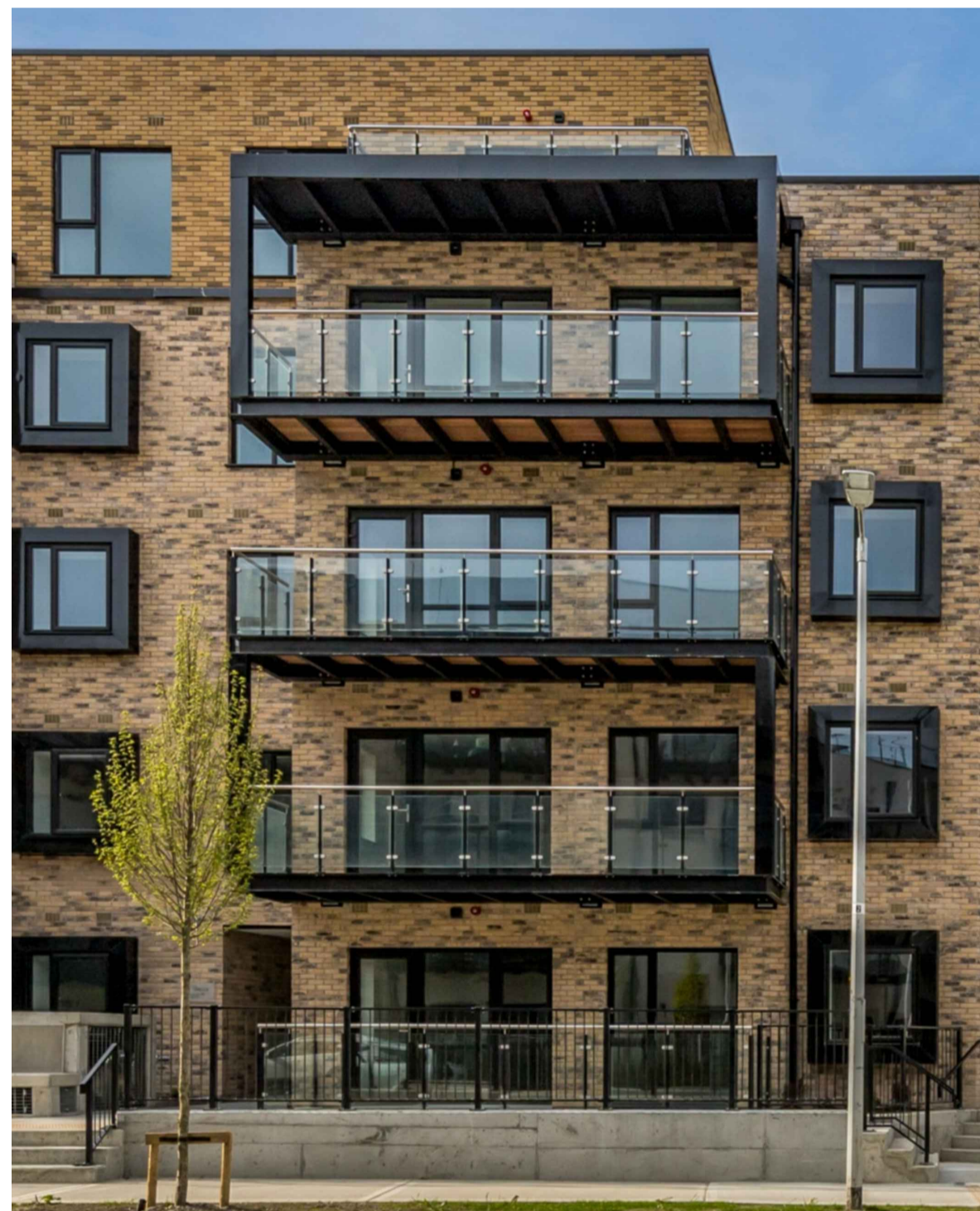


Image 2_Ibstock_New Ivanhoe Cream Brick

Brand	Ibstock New Ivanhoe Cream
Colour	Cream Multi
Type	Stock
Dimensions	205x102x65mm
Durability	F2
Active Soluble Salts	S2
Dimensional Tolerance & Range	T2, R1
Water Absorption	25
Compressive Strength	15
Pack Size	500

**Image 4_Ibstock_New Ivanhoe Cream
Brick Specification**



**Image 5_Window / Door Frames / Window Cills
RAL Colour 7016 Anthracite Grey**

NBS Specification

Manufacturer:

Sapphire Balconies Ltd, 11 Arkwright Road, Reading, RG2 0LU 0844 88 00 553.
sales@sapphire.eu.com www.sapphire.eu.com

Reference:

RLD aluminium Cassette® balconies with vertical bars.

Balcony anchor:

Cast-in anchors incorporating thermal breaks. Deflection designed to L/360.

Arms:

2-piece galvanised steel connected using remote locking device (RLD).

Cassette® structure:

Standard 400mm modular Glide-On™ Cassette® balconies polyester powder.

Soffits:

Polyester powder coated aluminium controlled draining soffits.

Deck finish:

MyDek Aluminium Decking fixed with hidden clips.

Toprail:

60x30 polyester powder coated aluminium handrail.

Hand rail of balcony to be 1100mm above Balcony Floor Finish.

Guarding:

40x12 polyester powder coated vertical bars.

Base fixing:

Mechanically fixed to Cassette®.

Fascias:

Polyester powder coated aluminium fascia behind vertical bars.

**Image 7_Proposed Sapphire
Balcony Specification**

**Hayden Hall - Blocks 1&3
External Appearance Brick / Window Selection**

NOTES:
Compliance with Planning
Condition 7 (ABP-314272-22)
PLANNING COMPLIANCE

GENERAL NOTES

- IN EXCEPTIONAL CASES WHERE IT HAS NOT BEEN POSSIBLE TO SPECIFY A GENERIC ELEMENT AND A SPECIFIC PRODUCT HAS BEEN NAMED, AN EQUIVALENT PRODUCT TO THAT SPECIFIED IS ACCEPTABLE WHERE IT MEETS THE TECHNICAL, FUNCTIONAL AND AESTHETIC STANDARDS OF THAT SPECIFIED. THE ONUS IS ON THE CONTRACTOR TO ENSURE THAT AN EQUIVALENT PRODUCT TO THAT SPECIFIED MEETS THE STANDARDS BY MEANS OF AN AGREEMENT CERTIFICATE, INSURANCE BACKED GUARANTEE OR WARRANTY, DETAILED SPECIFICATIONS, FIRE TEST CERTIFICATES WHERE APPLICABLE, BROCHURE AND OTHER MEANS OF PROOF OF COMPLIANCE. NOTWITHSTANDING THIS, THE APPROPRIATE FORTHCOMING DOCUMENTATION AND SAMPLES TO BE PROVIDED TO THE ARCHITECT PRIOR TO BEING INCORPORATED INTO THE CONSTRUCTION.
- ALL GUARANTEES AND WARRANTIES TO BE PROVIDED.
- ARTISANSHIP TO BE ACHIEVED IS 3mm / 1/8" / 1/4".

BREXIT NOTES

- ALL CONSTRUCTION PRODUCTS USED MUST COMPLY WITH THE CONSTRUCTION PRODUCTS REGULATION (EU) NO 305/2011.
- BRITISH STANDARDS (BS) AND BRITISH BOARD OF AGREEMENT (BBA) CERTIFICATION ARE NOT ACCEPTABLE METHODS OF DEMONSTRATING COMPLIANCE IN ACCORDANCE WITH CONSTRUCTION PRODUCTS REGULATION (EU) NO 305/2011.
- ANY PRODUCT SPECIFIED TO MEET A CONFORMITY ASSESSMENT PROCEDURE WHICH REQUIRES OR PROVIDES FOR THIRD PARTY CERTIFICATION MUST RECEIVE A CERTIFICATE DELIVERED BY A BODY WHICH IS RECOGNIZED AS AN EU NOTIFIED BODY.
- ALL PRODUCTS SUPPLIED WHICH ARE SUBJECT TO THE CONSTRUCTION PRODUCTS REGULATION MUST BE CLEARLY MARKED AND BE SUPPLIED WITH A DECLARATION OF PERFORMANCE.

NOTE:

TO BE READ IN CONJUNCTION WITH THE FOLLOWING:

- ARCHITECTURAL NBS SPECIFICATIONS, INTERNAL FINISHES, SANITARY & PROGRAMME SCHEDULES.
- EMPLOYERS REQUIREMENTS FOR DETAIL DESIGN OF QUALITY HOUSING GENERAL QUALITY OF MATERIALS, FITTINGS AND FINISHES FOR SOCIAL AND AFFORDABLE HOUSING AND APARTMENT DEVELOPMENTS, INCLUDING GUIDANCE ON PRELIMINARY ITEMS.
- MECHANICAL & ELECTRICAL DRAWINGS & SPECIFICATION.
- GRANTED FIRE SAFETY CERTIFICATE.
- GRANTED DISABILITY ACCESS CERTIFICATE.
- SERVICE ENGINEERS HAS SPECIFICATION, DRAWINGS & DETAILS.
- STRUCTURAL & CIVIL ENGINEERS SPECIFICATIONS, DRAWINGS & DETAILS.

REVISION	DATE	REVISED BY	DESCRIPTION
P01	2024.07.16	PM	For Planning Compliance

oppermann ARCHITECTS & INTERIOR DESIGNERS
associates
Unit D1, The Millhouse, The Shilleen, Foley Street, Dublin 1
Tel: (01) 8696900 Fax: (01) 8696909 email: architecture@oppermann.ie

CLIENT: JACKIE GREENE CONSTRUCTION
PROJECT: 20-773 - RESIDENTIAL DEVELOPMENT AT HAYDEN'S LANE, LUCAN
DRAWING: PROPOSED FACADE TREATMENT BLOCKS 1&3_Detail Sheet No. 1
DRAWING NO: 20773-OPP-00-ZZ-DR-A-0104-PP-P01
DATE: 2024.07.16

DRAWN BY: PM
CHECKED BY: PM
SCALE: As Indicated @ A1
PLOT DATE: 2024.07.16
Copyright © 2025 Oppermann Associates All Rights Reserved. If printed dimensions only to be taken from this drawing. All dimensions to be checked on site. Architects to be informed immediately of any discrepancies before work proceeds.