



Clonburris T1

Materials, Colours and Textures Revised Submission

For Proposed Residential Development
Clonburris T1, Co. Dublin

Revised Compliance Submission in Accordance with
Planning Condition no. 15 (Reg. Ref: SDZ21A/022)

Contents

1.0 Introduction	2
1.1 Materials & Finishes	2
2.0 Materials & Finishes	3
3.0 Elevations	5
3.1 House - Proposed Change of Materials	8

1.0 Introduction

1.1 Proposed Change of Materials

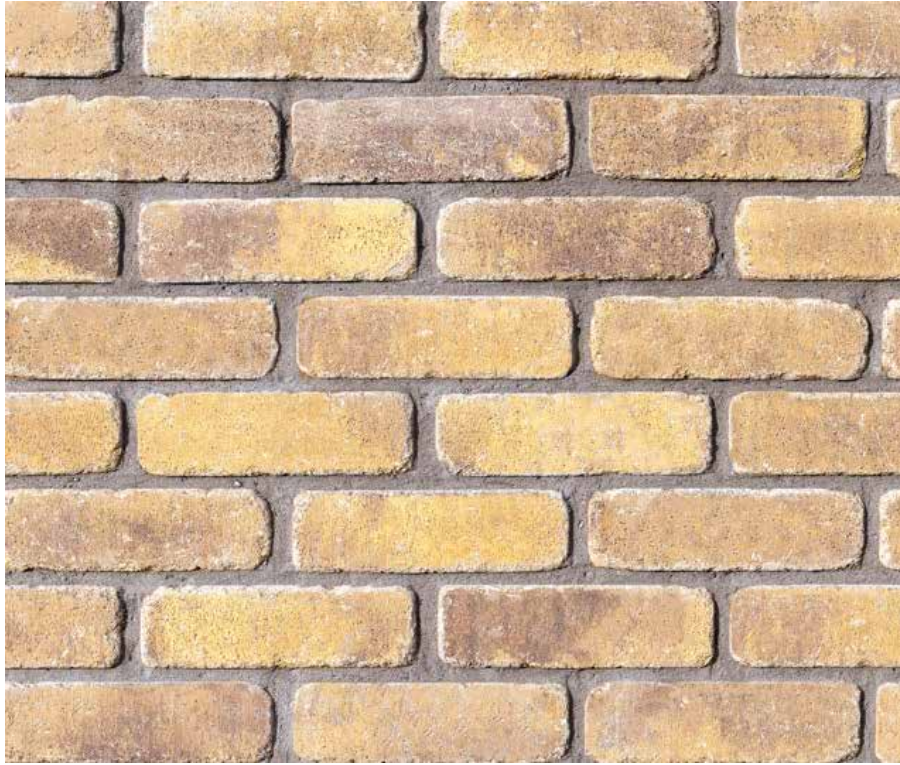
The houses are generally proposed to be constructed in a mottled buff brick alongside a light-coloured render as the primary material palette. The brick is used to identify key elevations at corners and junctions as well as the brick porches. These materials are complimented by traditional roof tiles and grey windows.

This revised submission proposes that one house is changed from being faced in light-coloured render to the mottled buff brick as it holds a key corner on the site.

Project Code	22001
Created By	SM
Checked By	LB
Issue Type	RevA
Issued On	07 Dec 2023

2.0 Materials & Finishes

2.1 Light Buff Brick



2.0 Materials & Finishes

2.2 Render, Windows, Sills & Roofs



Reference image of uPVC window system



Reference image of roof tiles



Reference image of uPVC window system in grey

3.0 Elevations

3.1 House - Proposed Change of Materials



Walls

- 1 Light Buff Brick
- 2 Light Smooth Render

Windows

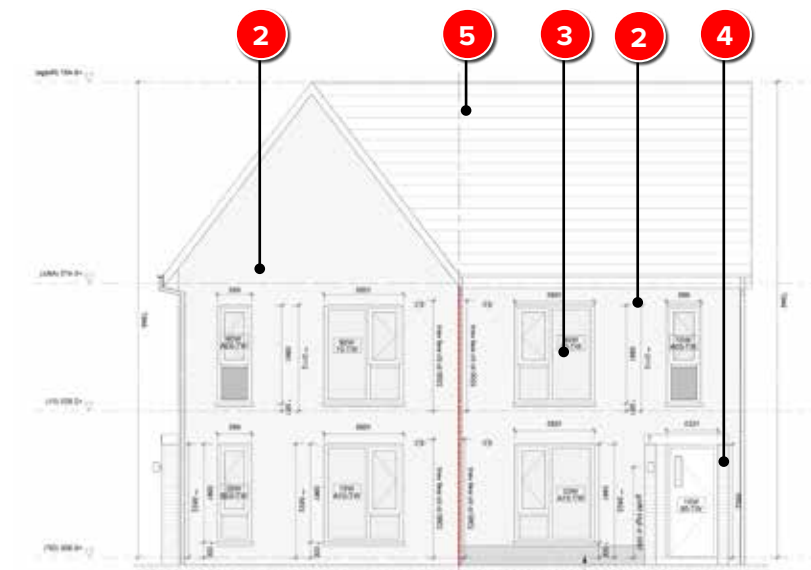
- 3 Grey Windows

Canopies

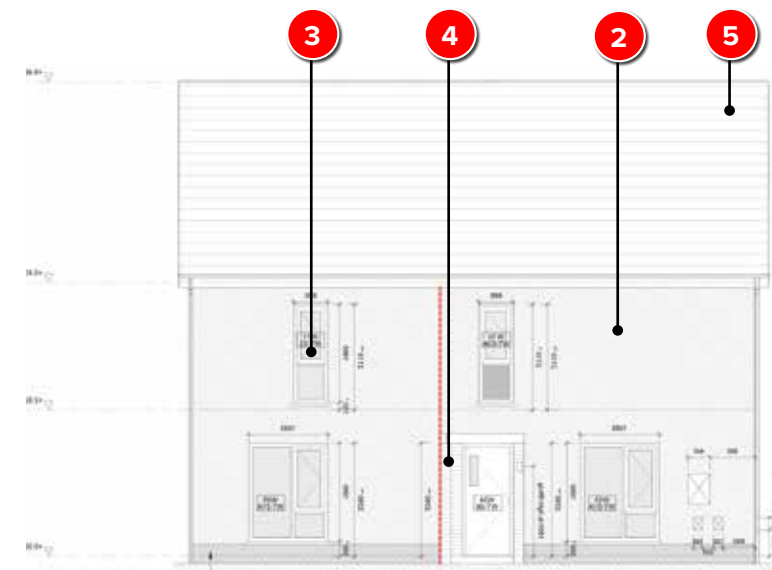
- 4 Entrance Canopies

Roof Finishes

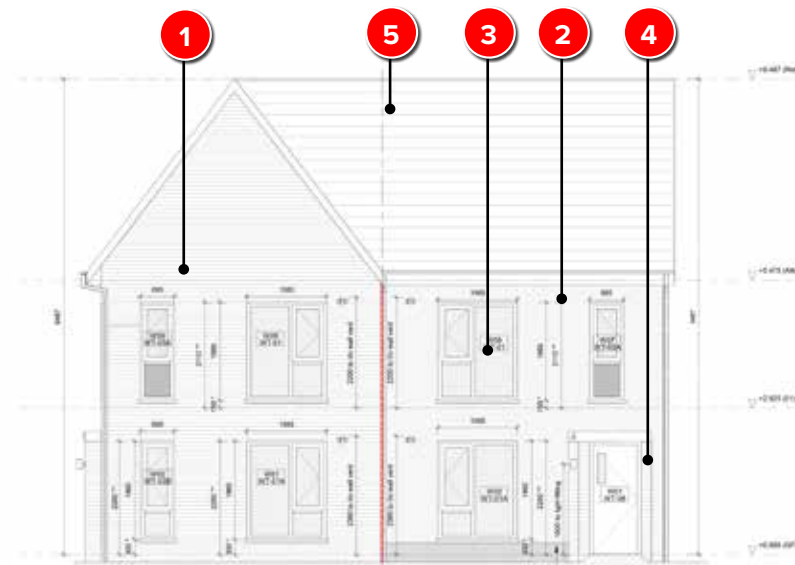
- 5 Roof Tiles



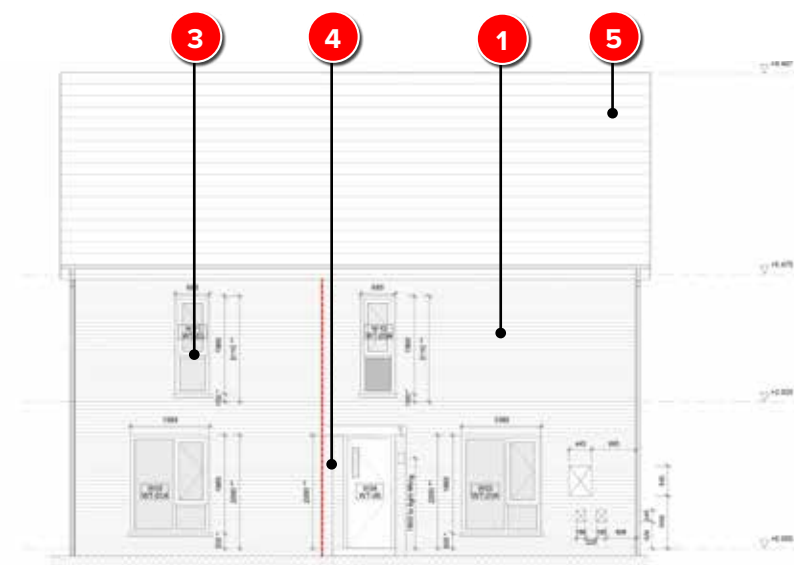
Permitted Side Elevation



Permitted Front Elevation



Proposed Side Elevation



Proposed Front Elevation



Light Buff Brick



Light Coloured Smooth Render



Grey Windows



Entrance Canopies

