

Site Plan addressing planning condition 6(a) - submitted 28.03.24



Legend:

- Proposed application boundary
- Extent of lands in client ownership
- Unit where additional dual frontage has been proposed to address condition 6(a)

REFER TO LANDSCAPE ARCHITECT'S DRAWINGS FOR ALL LANDSCAPING DETAILS
REFER TO ENGINEERS DRAWINGS FOR ALL SERVICES DETAILS

THIS DRAWING RELATES TO ORDNANCE SURVEY MAPS O.S MAP REF: 3260-a,3220-15

OS DATUM TO MALIN HEAD

DIGITALLY REPRODUCED UNDER LICENCE NUMBER: CYAL50177125 © ORDNANCE SURVEY IRELAND / GOVERNMENT OF IRELAND.

TOTAL UNIT NUMBERS	395
DENSITY (Net dev. area 7.51 Ha)	52.6 units / Ha
OVERALL SITE AREA	8.94 Ha
NETT DEVELOPMENT AREA	7.51 Ha

HOUSE TYPES	unit type	No. of beds	No. of storeys	No. of units
Type A	- 4 bed	3 storeys	11	
Type B	- 4 bed	3 storeys	15	
Type C	- 4 bed	2 storeys	08	
Type D	- 3 bed	2 storeys	46	
Type E	- 3 bed	2 storeys	41	
Type F	- 3 bed	2 storeys	18	

DUPLEX	unit type	No. of beds	No. of storeys	No. of units
Type J	- 2 bed	2 storeys	44	
Type K	- 3 bed	1 storey	44	
Type L	- 2 bed	2 storeys	21	
Type M	- 3 bed	2 storeys	21	
Type O	- 2 bed	2 storeys	06	
Type P	- 3 bed	1 storey	06	

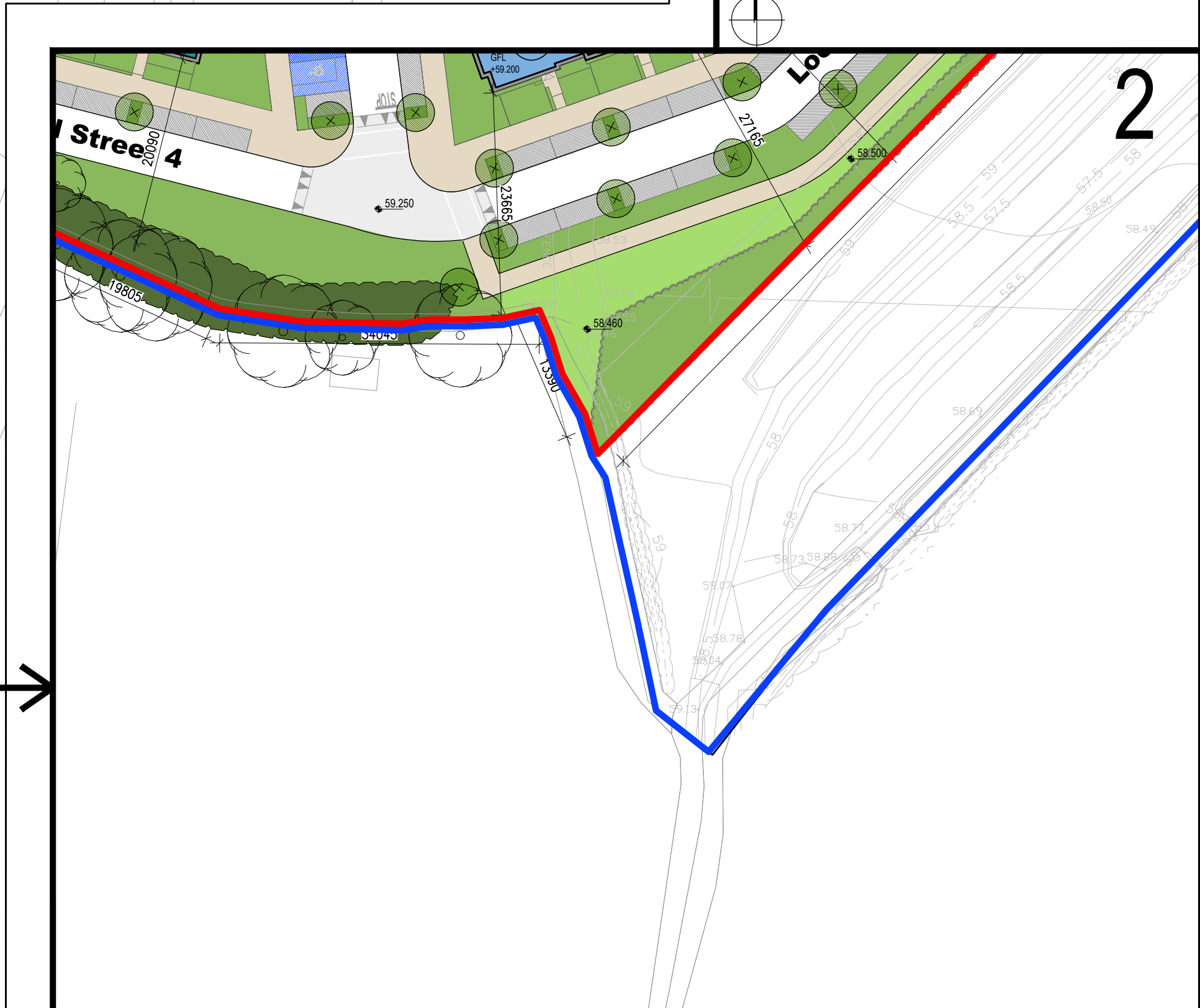
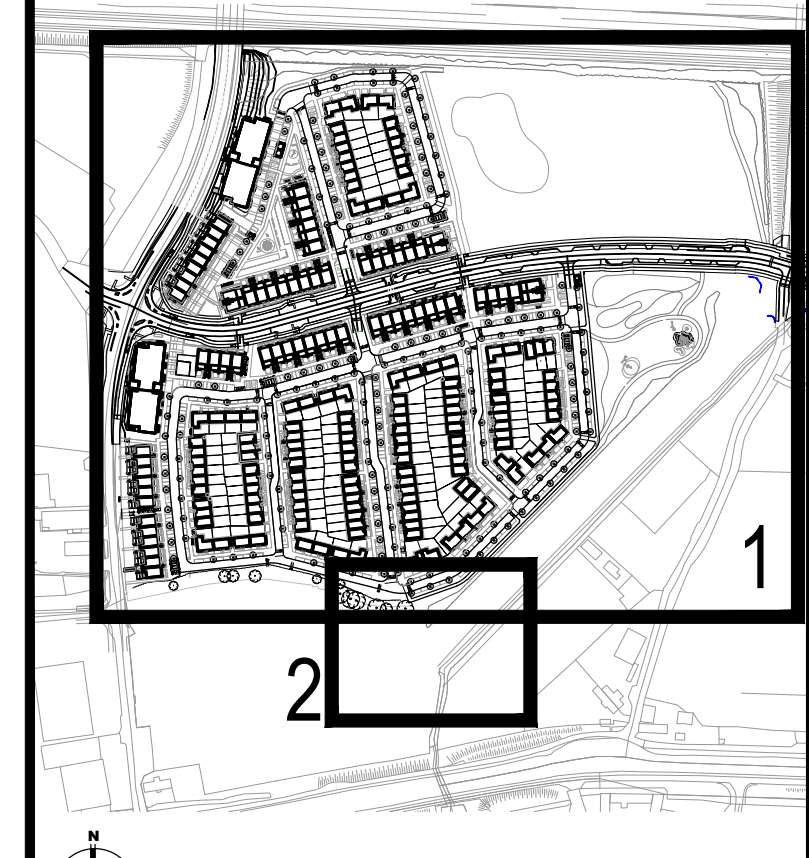
APARTMENT BUILDINGS

APARTMENT TYPES	unit type	No. of beds	No. of storeys	No. of units
Type A1	- 1 bed	1 storey	37	
Type A2	- 1 bed	1 storey	18	
Type B1	- 2 bed	1 storey	22	
Type B2.1	- 2 bed	1 storey	16	
Type B2.2	- 2 bed	1 storey	02	
Type B3	- 2 bed	1 storey	19	

TOTAL NO. OF UNITS 395

CAR PARKING	SPACES PROVIDED
Overall Total	107
Disabled car Spaces included	26

Subject Site Keyplan (NTS)



Notes:
1. Copyright Reserved
2. Works to be undertaken in accordance with the approved drawings.
3. The contractor is responsible for ensuring all works and dimensions on site and shall refer all discrepancies to the Architect.
4. Where appropriate, for details of s.s. structure, or mechanical and electrical details, see Engineers drawings.
5. Proprietary items shall be fixed in accordance with manufacturers instructions.
6. Scope of proprietary items shall be checked with manufacturer.
7. The contractor shall be responsible for the coordination of structure, finishing and services.

Issue Status	Progress
Planning Application	Finalised
Fire Cert	Finalised
Disability Cert	Finalised
Technical	Finalised
Construction	Finalised
As Built	Finalised
Information Quality Plan	Finalised

Rev.	Date	Revision	By	Check
01	28/03/23	Completion Submission		

Project	Site Plan - Compliance Submission
Adamstown Extension - Clonburris SDZ Residential Development	
Drawing No.	6268-P-004A
Scale	1:500@A0
Rev	01
Drawn	RT, ED
Date	Mar '23

Project Adamstown Extension - Clonburris SDZ Residential Development
Drawing No. 6268-P-004A
Scale 1:500@A0
Rev 01
Drawn RT, ED
Date Mar '23

Project Adamstown Extension - Clonburris SDZ Residential Development
Drawing No. 6268-P-004A
Scale 1:500@A0
Rev 01
Drawn RT, ED
Date Mar '23

Project Adamstown Extension - Clonburris SDZ Residential Development
Drawing No. 6268-P-004A
Scale 1:500@A0
Rev 01
Drawn RT, ED
Date Mar '23

Project Adamstown Extension - Clonburris SDZ Residential Development
Drawing No. 6268-P-004A
Scale 1:500@A0
Rev 01
Drawn RT, ED
Date Mar '23

Project Adamstown Extension - Clonburris SDZ Residential Development
Drawing No. 6268-P-004A
Scale 1:500@A0
Rev 01
Drawn RT, ED
Date Mar '23

