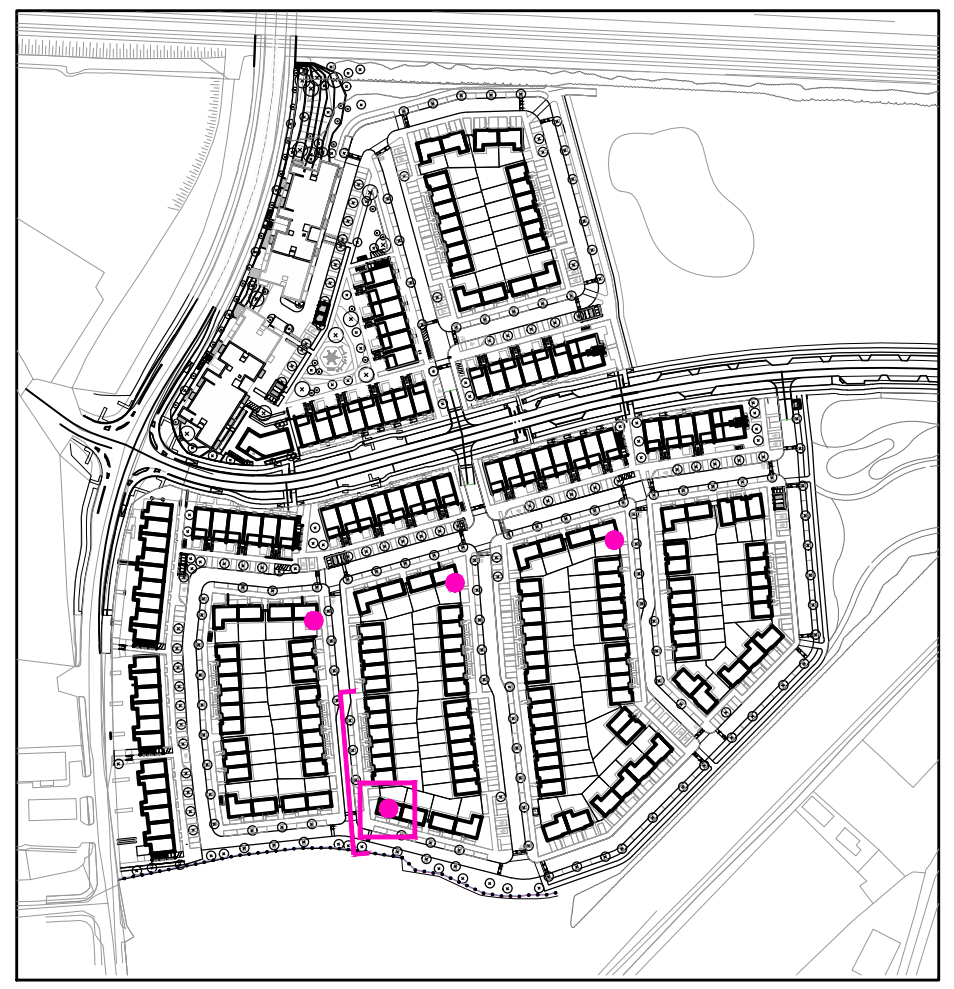


Layout addressing planning condition 6(a) - submitted 28.03.24



Indicates unit locations  
**KEY PLAN [NTS]**

HOUSE TYPES	unit type	No. of beds	No. of storeys	No. of units
Type A	- 4 bed	3 storeys	11	
Type B	- 4 bed	3 storeys	15	
Type C	- 4 bed	2 storeys	11	
Type D	- 3 bed	2 storeys	46	
Type E	- 3 bed	2 storeys	41	
Type F	- 3 bed	2 storeys	15	
				<b>139</b>

**EXTERNAL FINISHES**

**WALLS:** PAINTED SAND / CEMENT RENDER OR PROPRIETARY PRECOLOURED RENDER FINISH SELECTED BRICKWORK WHERE INDICATED ON DRAWINGS

**WINDOWS:** SELECTED PROPRIETARY DOUBLE / TRIPLE GLAZED WINDOW SYSTEM WITH FRAMES TO APPROVED COLOUR. OBSCURED GLAZING TO BATHROOMS AND EN-SUITES.

**DOORS:** SELECTED PROPRIETARY DOORS AND GLAZED SIDE SCREENS TO APPROVED COLOUR.

**RAINWATER GOODS:** uPVC OR POWDER COATED METAL GUTTERS AND RAINWATER PIPES TO SELECTED COLOUR.

**MAIN ROOF:** CONCRETE ROOF TILES IN SELECTED COLOUR.

**LOW LEVEL PROJECTION:** ZINC CANOPY TO ENTRANCE OF UNITS

**OTHER ITEMS:** uPVC OR POWDER COATED METAL FASCIAS, SOFFITS AND BARGE BOARDS PAINTED MILDSTEEL RAILINGS AND BALUSTRADES

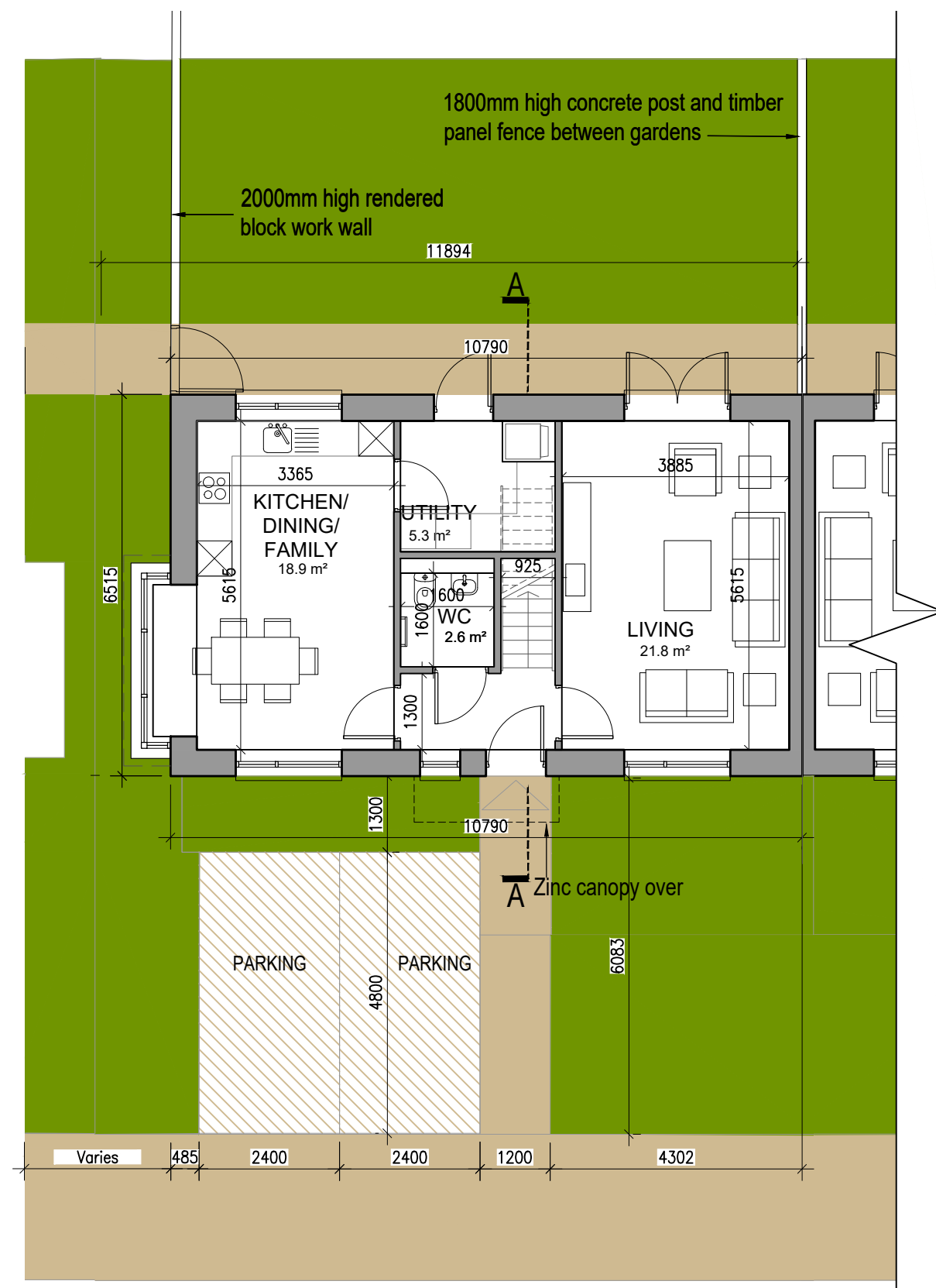
**MATERIAL CODE LEGEND**

- 01 - BUFF BRICK - STANDARD BOND - LIGHT APPROVED TONE
- 02 - BUFF BRICK - FEATURE BOND - LIGHT APPROVED TONE
- 03 - BUFF BRICK - STANDARD BOND - BROWN APPROVED TONE
- 04 - BUFF BRICK - FEATURE BOND - BROWN APPROVED TONE
- 05 - SELF COLOURED RENDER - LIGHT APPROVED TONE
- 06 - SELF COLOURED RENDER - DARK APPROVED TONE
- 07 - CONCRETE ROOF TILES - DARK APPROVED TONE
- 08 - POWDERCOATED METALWORK OR uPVC - DARK APPROVED RAL COLOUR
- 09 - POWDERCOATED METAL SCREENING - DARK APPROVED RAL COLOUR
- 10 - CLEAR GLAZING WITH DARK APPROVED RAL COLOUR FRAMING
- 11 - OPAQIFIED GLAZING WITH DARK APPROVED RAL COLOUR FRAMING

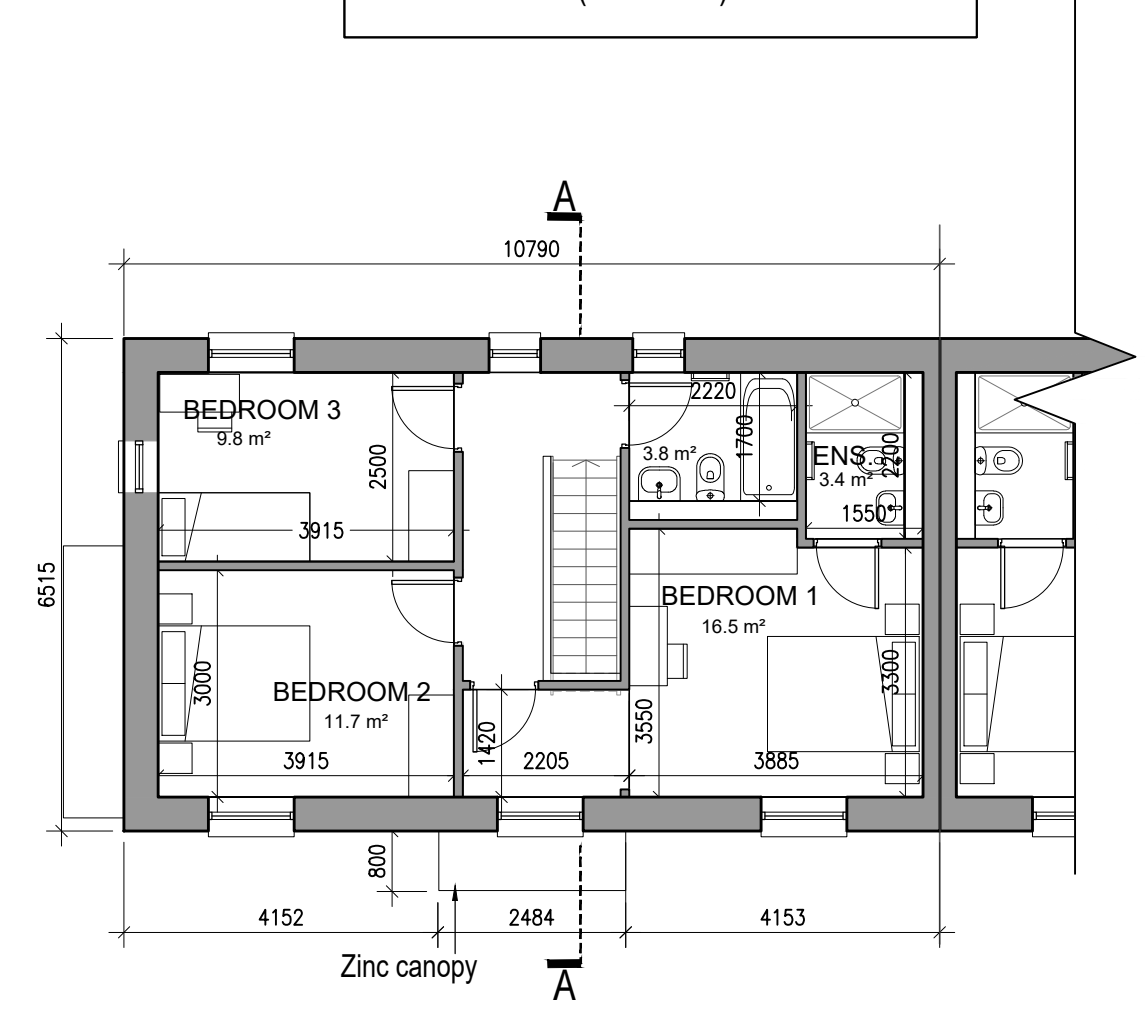
**REFER TO STREET ELEVATIONS FOR LOCATION OF ELEVATION TYPES**

**REFER TO LANDSCAPE ARCHITECT'S DRAWINGS FOR ALL LANDSCAPING DETAILS INCLUDING BOUNDARY TREATMENTS**

Ground floor area 58.0 m<sup>2</sup>  
First floor area 58.0 m<sup>2</sup>  
Total Floor Area (4-bed unit): 116.0 m<sup>2</sup>



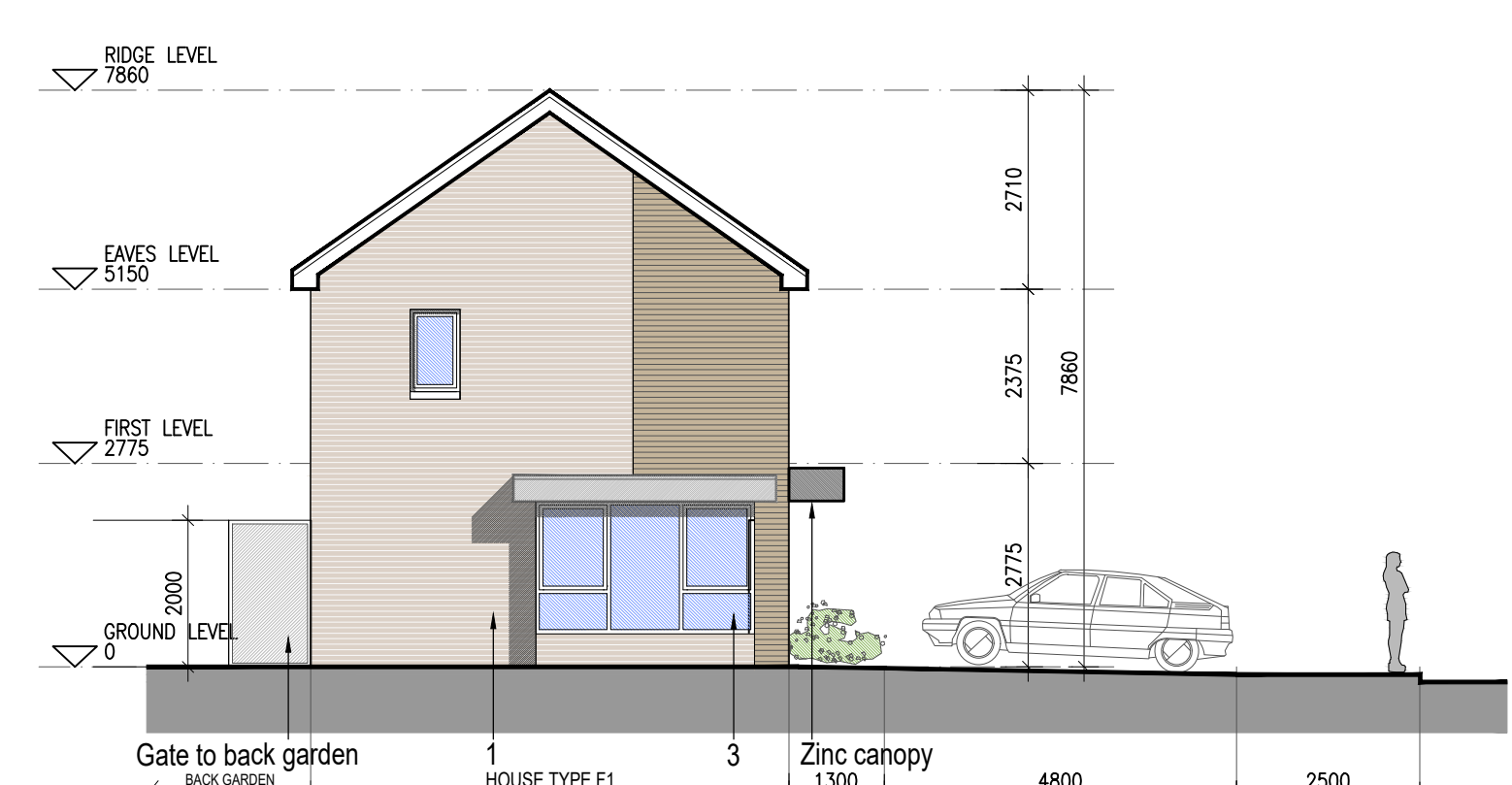
**01**  
125  
**Ground Floor Plan**



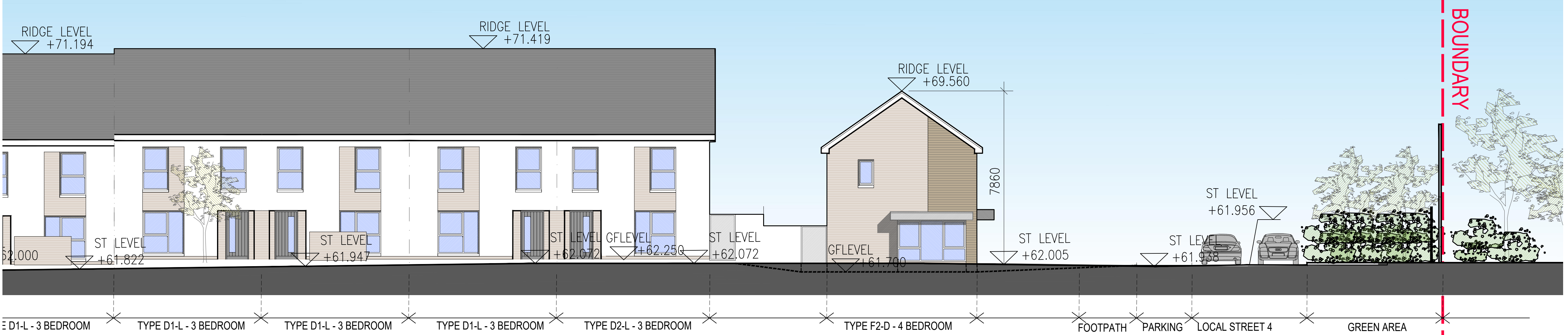
**02**  
125  
**First Floor Plan**



**03**  
125  
**Front Elevation**



**04**  
125  
**Side Elevation**



**05**  
125  
**Contiguous Elevation**

**Notes**

- Copyright Reserved
- Work to agreed dimensions only. Do not scale drawing
- The contractor is responsible for checking all levels and dimensions on site and shall refer all discrepancies to the Architect
- Where appropriate, for details of r.c. structure, or mechanical and electrical details, see Engineers drawings
- Proprietary items shall be fixed in strict accordance with manufacturers instructions.
- Sizes of proprietary items shall be checked with manufacturer.
- The contractor shall be responsible for the coordination of structure, finishes and services.
- The contractor shall be responsible for the coordination of structure, finishes and services.

**Issue Status**

Progress	Planning Application	Fire Cert	Disability Cert	Tender	Construction	As Built	Information Only

No.	Date	Revision	Initials
01	27/01/23	Planning Application	IFJ
02	28/03/24	Compliance Submission	ED

**Project** Adamstown Extension - Clonburris SDZ Residential Development

**Drawing Title** House Type F2\_End\_Non-Handed\_Plans, Elevations and Section

**Drawing No** 6268-P-125

**Scale** 1:100 @ A1

**Rev** 01

**Drawn** IFJ; ED

**Date** Mar '23

**6-7 HARDCOURT TERRACE, DUBLIN 2, IRELAND**  
t +353-1-678 2400 f +353-1-678 7395  
www.bkd.ie

**bkdarchitects**  
BURKE-KENNEDY DOYLE