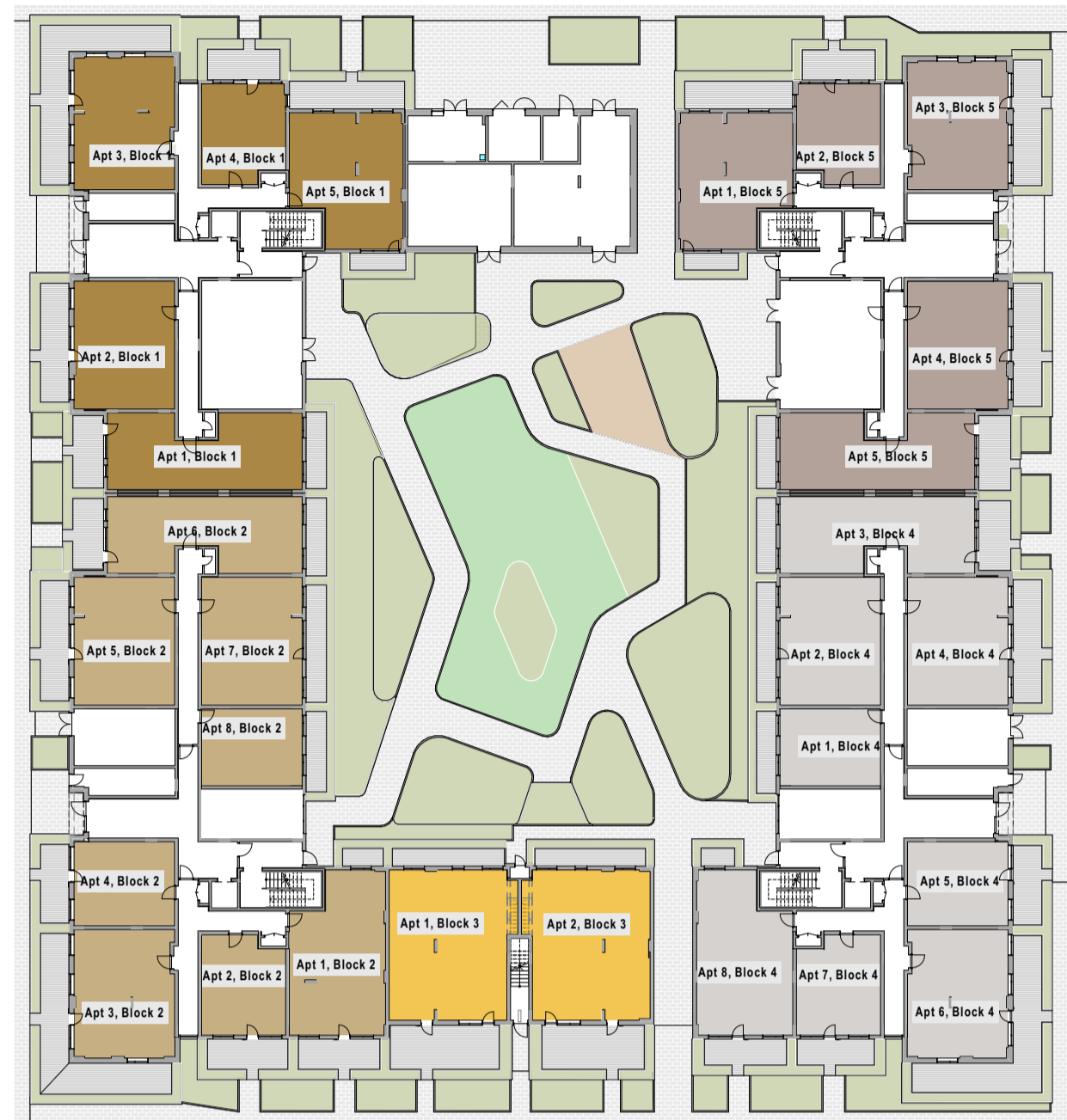


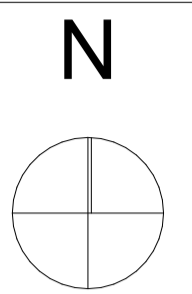
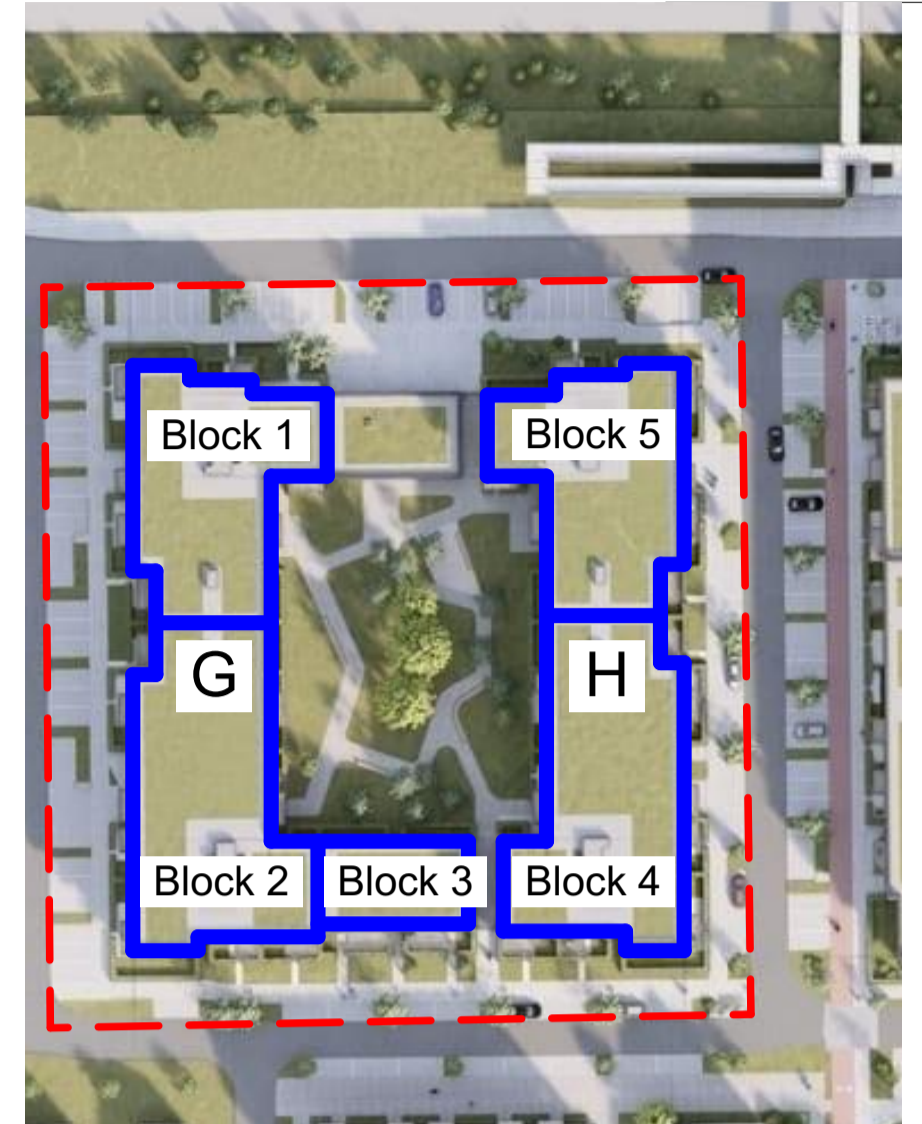
1. This drawing is the property of Altu Architects Ltd. It must not be copied or given to a third party without the permission of Altu Architects Ltd.
2. Work to figured dimensions only. Do not scale the drawing.
3. The contractor is responsible for checking all dimensions and levels on site and shall refer all discrepancies to the Project Architect.
4. Drawings to be read in conjunction with all relevant engineers drawings. Mechanical and electrical, any structural or services information shown on this drawing is indicative only.
5. The contractor shall be responsible for the coordination of all structure, services and finishes.
6. Proprietary items shall be fixed in strict accordance with manufacturers instructions.
7. This drawing shall only be used for the work stage as denoted and no subsequent stage.



Level 00  
Scale:1:500



Level 01  
Scale:1:500



Level 02  
Scale:1:500



Level 03  
Scale:1:500

**NUMBERING LEGEND**

- Apt. 1 to 26, Block 1  
The Park  
Parkleigh Elms  
Seven Mills  
Dublin 22
- Apt. 1 to 35, Block 2  
The Park  
Parkleigh Elms  
Seven Mills  
Dublin 22
- Apt. 1 to 4, Block 3  
The Park  
Parkleigh Way  
Seven Mills  
Dublin 22
- Apt. 1 to 35, Block 4  
The Park  
Cooper Square  
Seven Mills  
Dublin 22
- Apt. 1 to 26, Block 5  
The Park  
Cooper Square  
Seven Mills  
Dublin 22

Rev	Date	Description	Issued By	Checked By

**ALTU** Architects  
14/15 Camden Street Lower  
Dublin 2  
T: +353 (0)1 254 6996  
E: info@altuarchitects.ie  
W: altuarchitects.ie

**PLANNING COMPLIANCE**

Client: Cairn Homes  
Project: Seven Mills Block G + H  
Drawing: Numbering and Naming  
Job No: 21042 Scale: 1:500 Status: Revision:  
2607