

Compliance : Play Area Rationale SD22A/0356

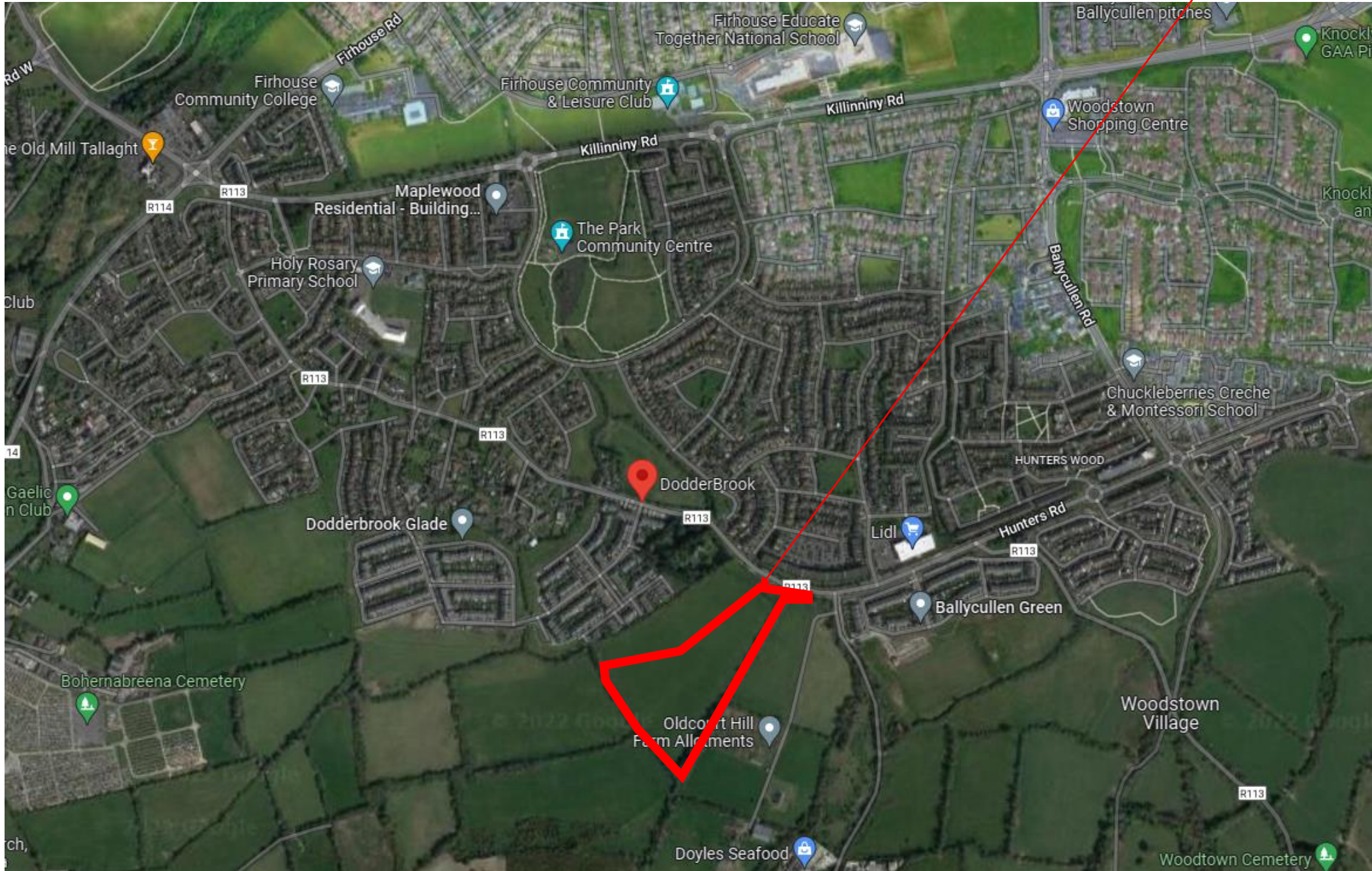
Development South of Oldcourt Road,
Oldcourt,
Firhouse,
Dublin 24.

Client: Capami Ltd.



Context – Site Location

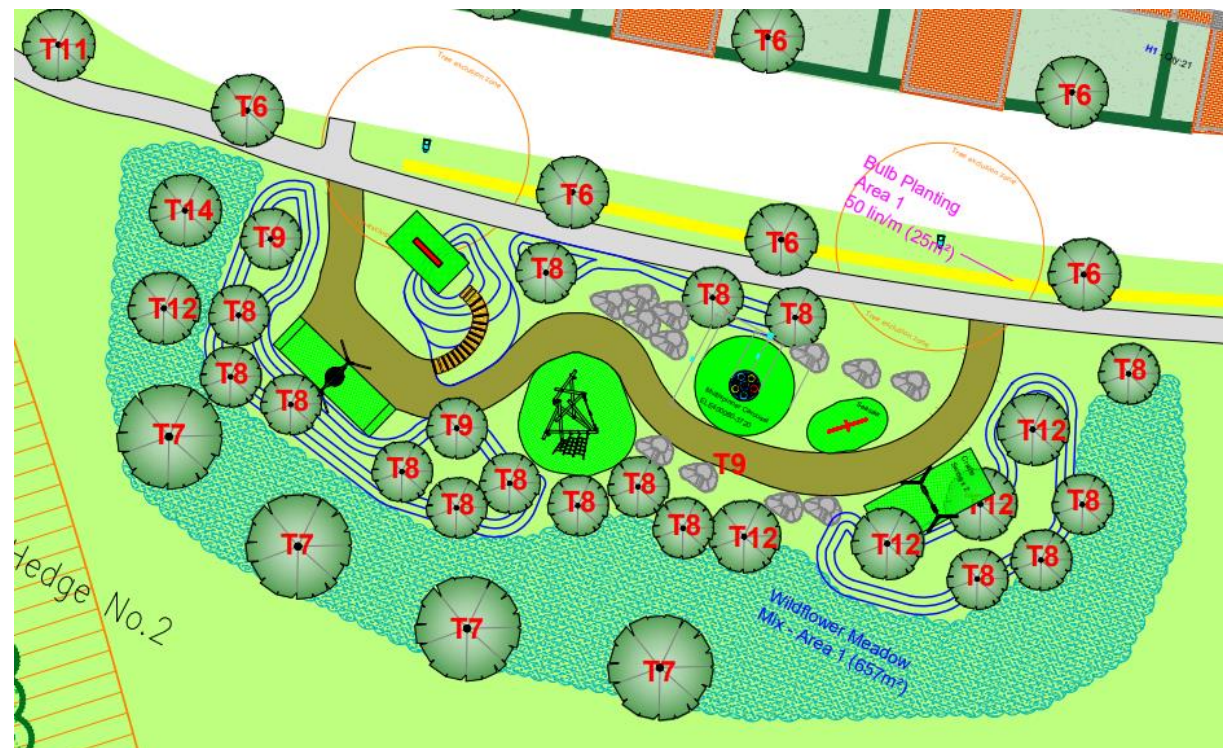
Site Location



Where possible, existing natural and landscape heritage elements to be protected – key hedgerows and field drainage features.

Hedgerows to be retained notably along the southern boundary. Hedgerows to be managed to enable safe use while maintaining biodiversity.

Proposed Natural Playground



- We are proposing a natural playground.
- Natural playgrounds help children to develop other beneficial behaviors in addition to physical skills. These behaviors include social skills, cooperation, and the ability to solve problems. In addition, natural playgrounds stimulate a child's imagination and creativity more than a traditional playground
- More sustainable
- Blend in with natural environment – slopes etc.

Movement

- Tree planting and gentle grass mounding are ideal places to hide. These changes in levels are suitable for jumping and running down gentle hills.
- Some Wooden seating areas could be suitable for climbing.
- Proposed playground located in open space will accommodate climbing.

Stimulation of the five sense

- Natural elements throughout open space provide quiet places, dark and bright areas that appeals to a child senses.
- Sensory and textured plants planted throughout the space will appeals to the senses.

Experiencing change in the natural and built environment. Experiencing the seasons

- The contrast between open space and paving provide opportunities to learn and play.
- Natural element in open space such as trees will allow Children to experience changes in seasons.

Social interactions

- Meeting points and a number of seating areas will encourage social interaction.
- Kick about spaces also encourage interaction

Playing with identity

- Role play, Places to hide in the natural elements of open space.

Experiencing a range of emotions

- This bespoke designed open space will appeal and evoke children's emotions.



Capabilities of play such as tumble ,chase game.

- Extensive grass areas throughout the open space are ideal for kickabout and chasing games.

Varied and interesting physical environment.

- A bespoke designed space that has gentle grass mounding thus providing a change in levels. This provides a varied and interesting physical play environment.

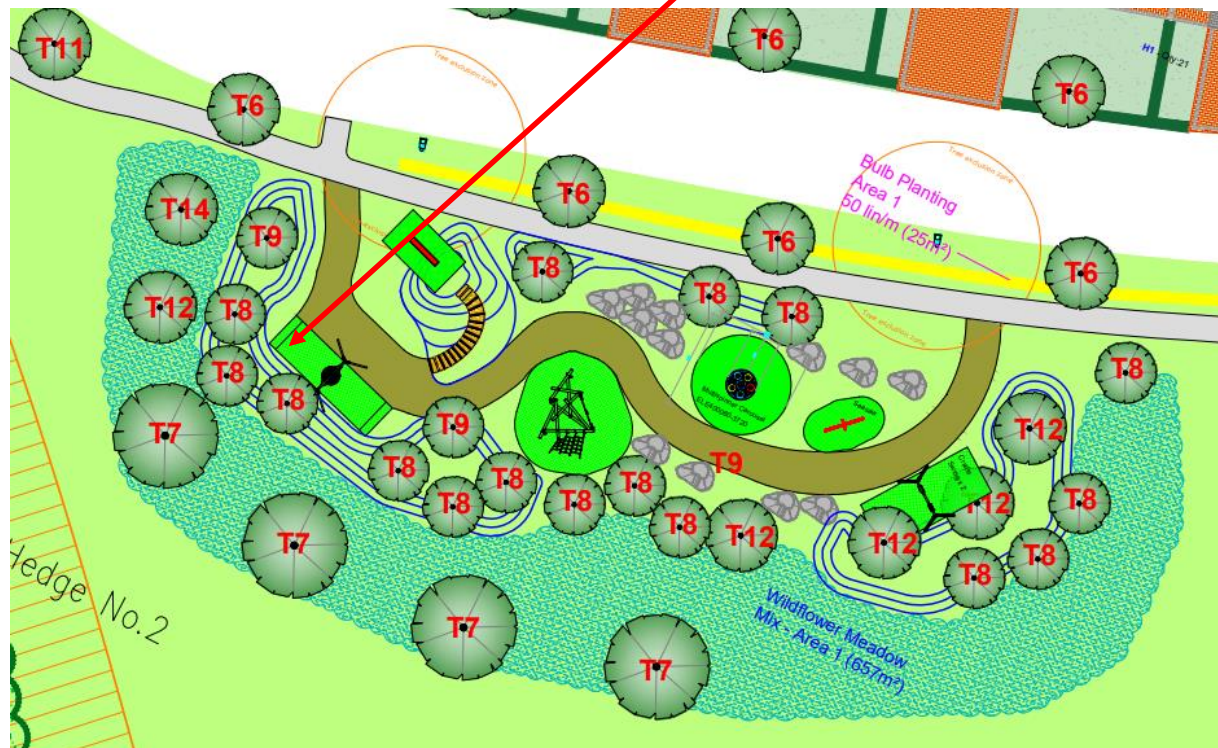
Natural Play Equipment – Item 1

| Item no. NRO906-1101 | |
|-----------------------------|---|
| General Product Information | |
| Dimensions LxWxH | 414 x 205 x 275 cm |
| Age Group | 4+ |
| Play Capacity | 7 children |
| Colour Options |   |

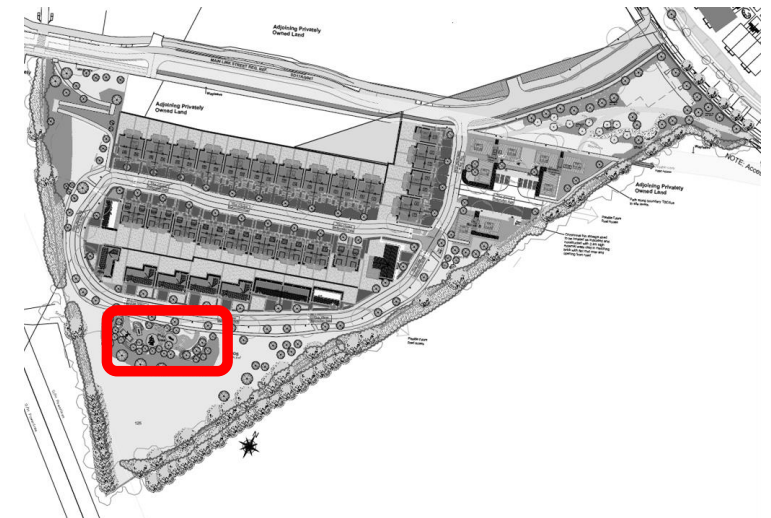
Birds Nest Swing – Robina Frame



Natural Play Area Plan



Location Plan





All Organic Robinia products by KOMPAN are made of Robinia wood from sustainable European sources. On request it can be supplied as FSC® Certified (FSC® C004450).



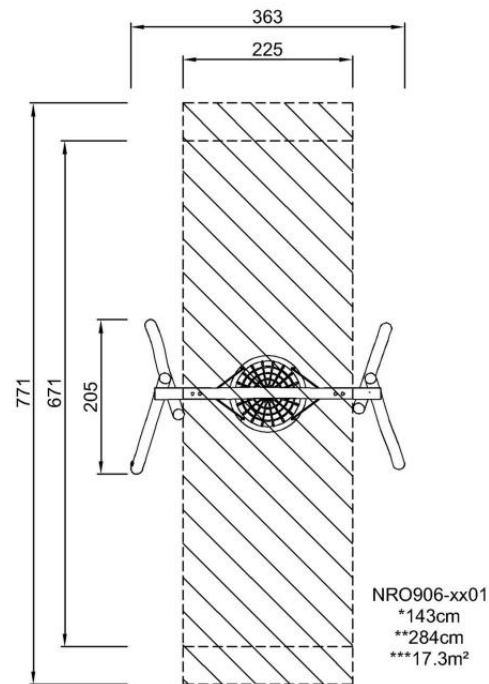
Swing hangers for Robinia wood crossbeams are made of stainless steel brackets and can move over two axis. The flange bearings are silicone enriched to make the suspension maintenance free.

KOMPAN designed the bird's nest seats to be light in weight and in compliance with global safety standards. The soft, shock absorbent bumpers with non-slip surface makes the swing seat extremely user friendly. Choose between a rope version with reinforced PA rope or a moulded PE version. Both equipped with soft rubber bumpers.

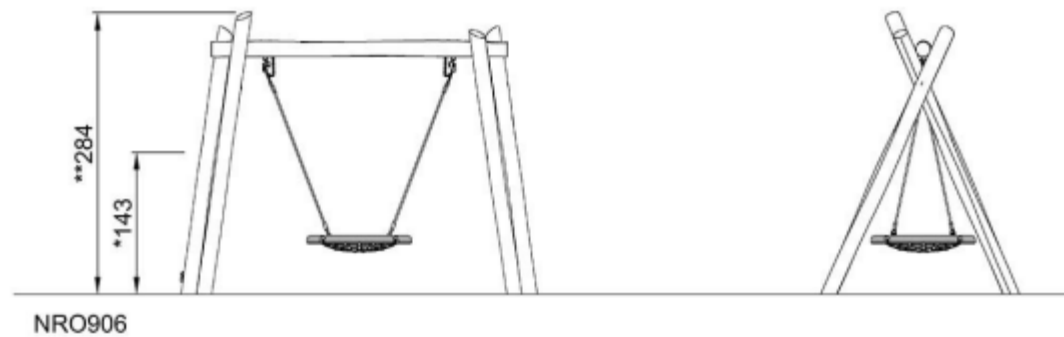
KOMPAN designed the bird's nest seats to be light in weight and in compliance with global safety standards. The soft, shock absorbent bumpers with non-slip surface makes the swing seat extremely user friendly. Choose between a rope version with reinforced PA rope or a moulded PE version. Both equipped with soft rubber bumpers.

| Item no. NRO906-1101 | |
|--------------------------|---------------------|
| Installation Information | |
| Max. fall height | 143 cm |
| Safety surfacing area | 17.3 m ² |
| Total installation time | 6.4 |
| Excavation volume | 1.47 m ³ |
| Concrete volume | 0.32 m ³ |
| Footing depth (standard) | 109 cm |
| Shipment weight | 414 kg |
| Anchoring options | In-ground ✓ |
| Warranty Information | |
| Robinia wood | 15 years |
| Swing seat | 10 years |
| Swing hangers | 5 years |
| Ropes & nets | 10 years |
| Spare parts guaranteed | 10 years |

* Max fall height | ** Total height | *** Safety surfacing area



* Max fall height | ** Total height



Natural Play Equipment – Item 2

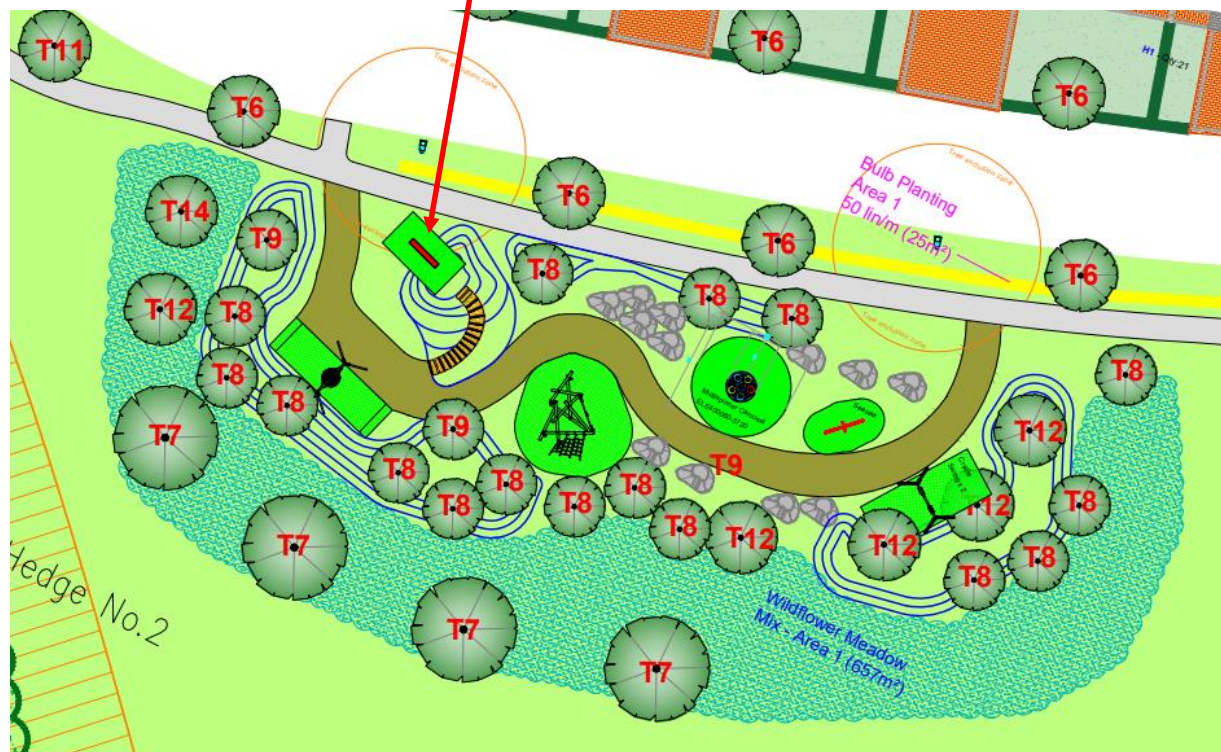
Grassed Mounding with Slide (Age 3+)



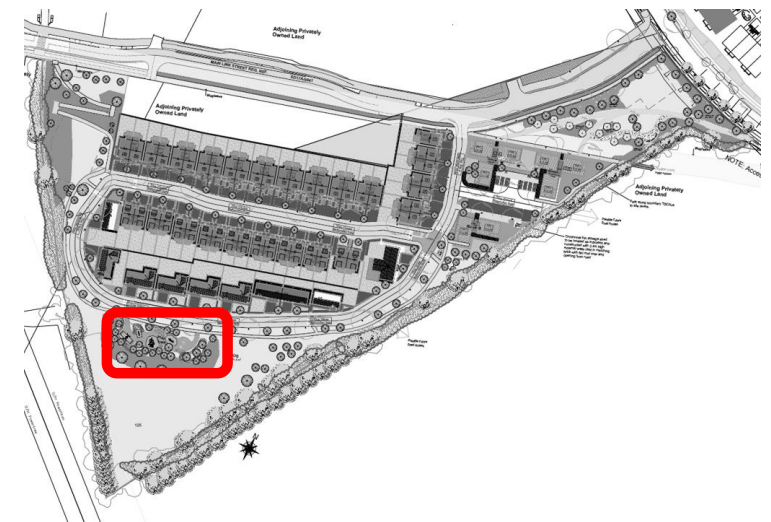
Materials: Stainless Steel Grade 304
Age: 3 years plus



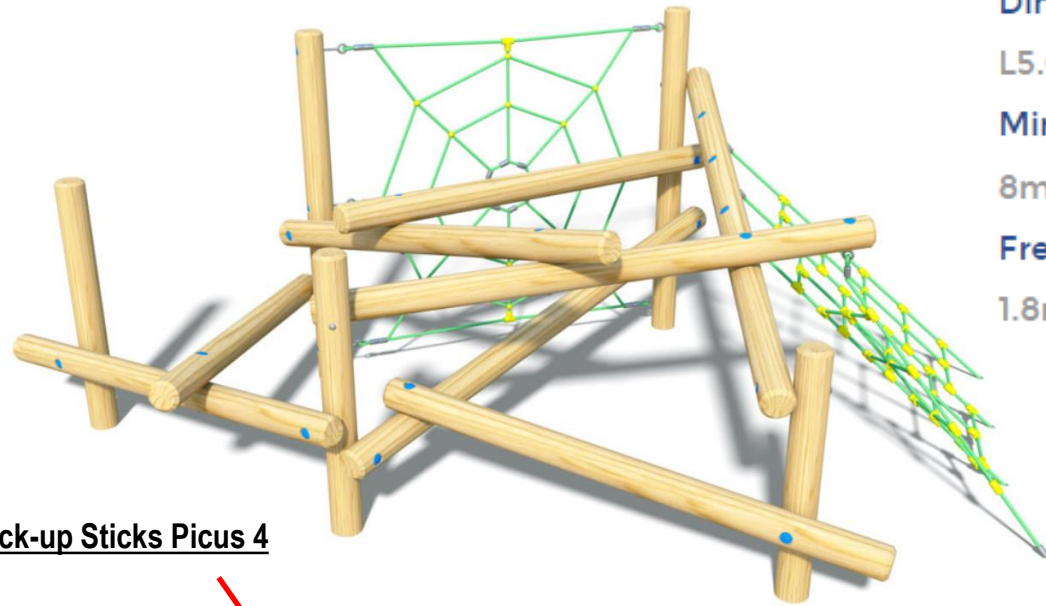
Natural Play Area Plan



Location Plan



Natural Play Equipment – Items 3 & 4



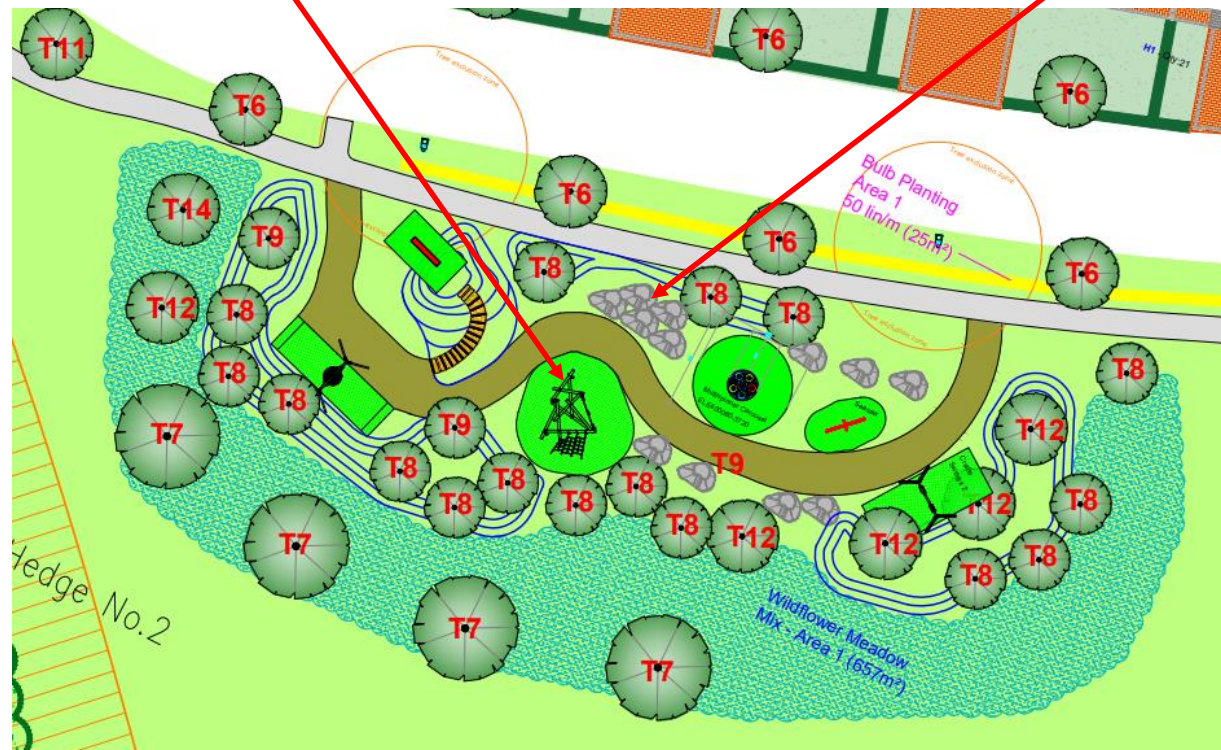
Pick-up Sticks Picus 4

Dimensions:
L5.00m W3.22m H1.8m

Minimum Space:
8m x 6.36m

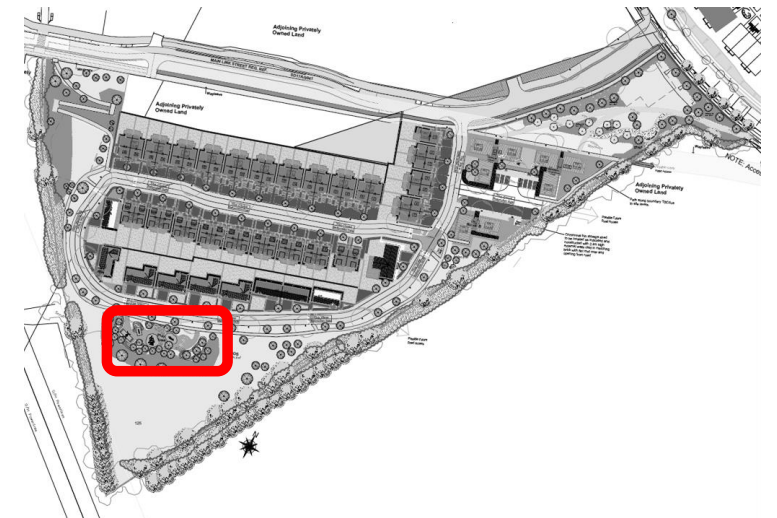
Free Fall Height:
1.8m Age: 5+

Climbing Rocks (Age 5+)



Natural Play Area Plan

Location Plan



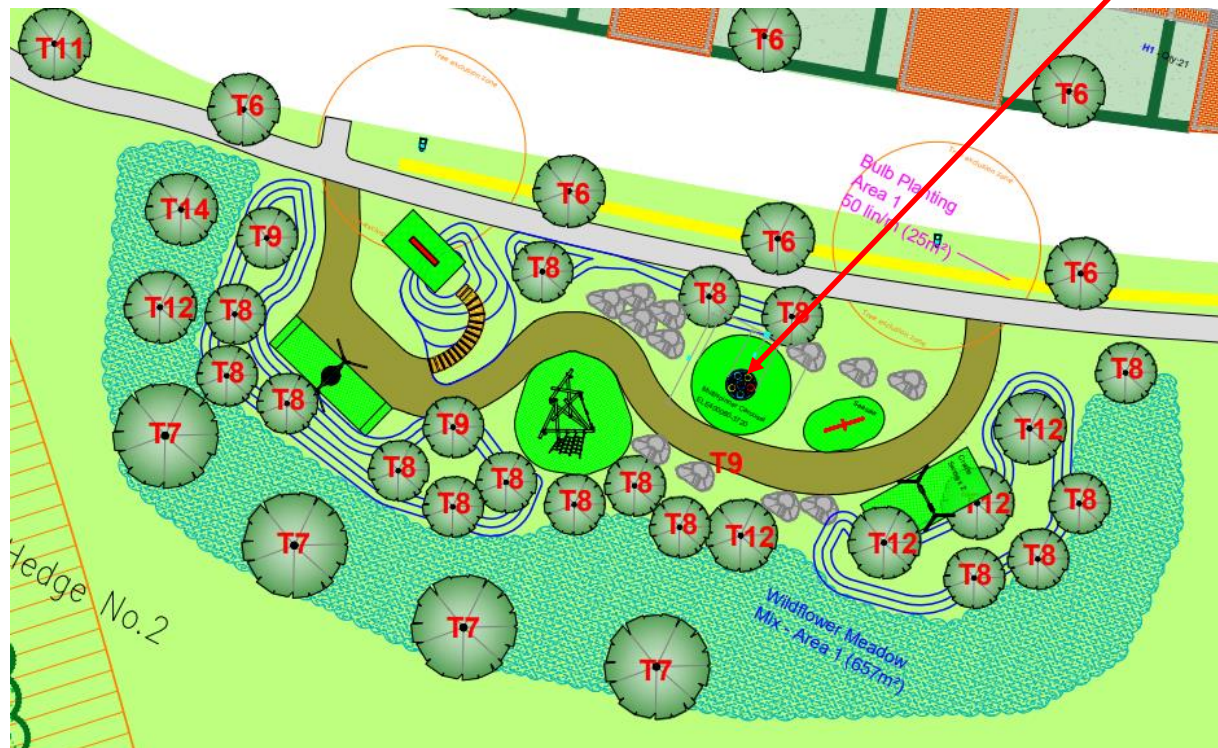
Natural Play Equipment – Item 5



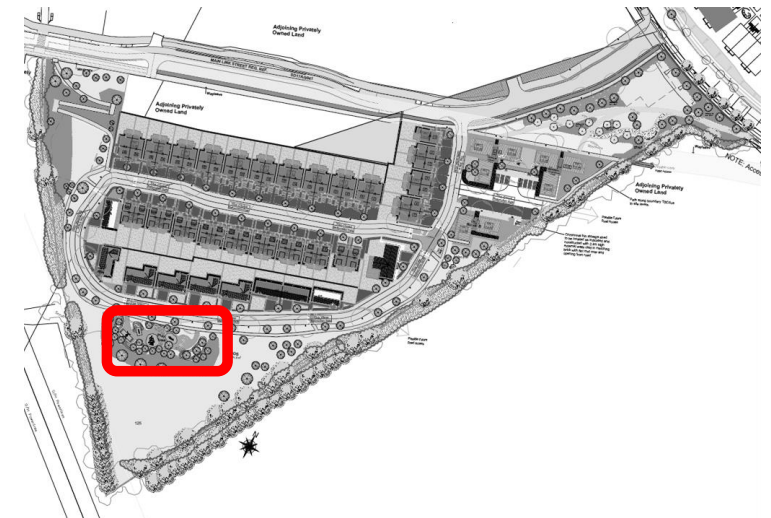
| Item no. ELE400060-3717 | |
|-----------------------------|------------------------------------|
| General Product Information | |
| Dimensions LxWxH | 176x176x77 cm |
| Age group | 3+ |
| Play capacity (users) | 7 |
| Colour options | ● |

Multispinner Carousel ELE400060-3717

Natural Play Area Plan



Location Plan



Multispinner Carousel

ELE400060



The Multispinner grey base is made of recyclable PE. The base is moulded in one piece with integrated metal thread bushings and water drain holes to ensure high durability in all climates around the world. Each bowl is mounted separately into the base.



The bowls are made of recyclable PE. The bowls are moulded in one piece with integrated metal thread bushings and water drain hole to ensure high durability in all climates around the world.



Heavy-duty engineered bearing system with single row deep groove ball bearings with rubber seals. The fully closed bearing has lifetime lubricated and maintenance free.

Item no. ELE400060-3717

Installation Information

| | |
|--------------------------|--------------------------|
| Max. fall height | 100 cm |
| Safety surfacing area | 26.1 m ² |
| Total installation time | 3.8 |
| Excavation volume | 0.44 m ³ |
| Concrete volume | 0.31 m ³ |
| Footing depth (standard) | 100 cm |
| Shipment weight | 199 kg |
| Anchoring options | In-ground ✓ Surface ✓ |

Warranty Information

| | |
|-----------------------|----------|
| Hollow PE parts | 10 years |
| Bearing Construction | 5 years |
| Galvanised Steel | Lifetime |
| Hardware | 10 years |
| Spare Parts Guarantee | 10 years |



The steel surfaces are hot-dip galvanised inside and outside with lead-free zinc. The galvanisation has excellent corrosion resistance in outside environments and requires low maintenance.



The Multispinner carousel is offered in three different color combination. Two with a grey base and a third GreenLine version in dark teal color.





GreenLine versions in dark teal color are designed with molded PP parts which consist of 25% recycled post consumer waste and 75% virgin material. GreenLine ensures the lowest possible CO2e emission factor.



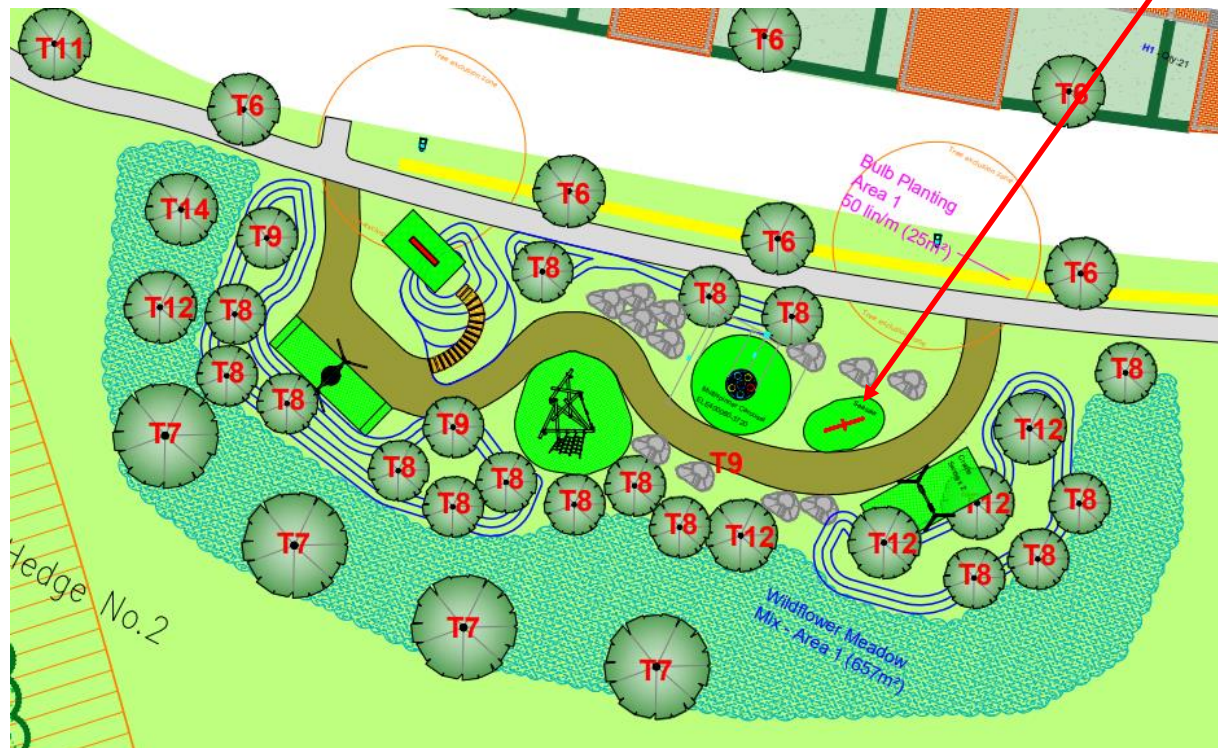
Natural Play Equipment – Item 5



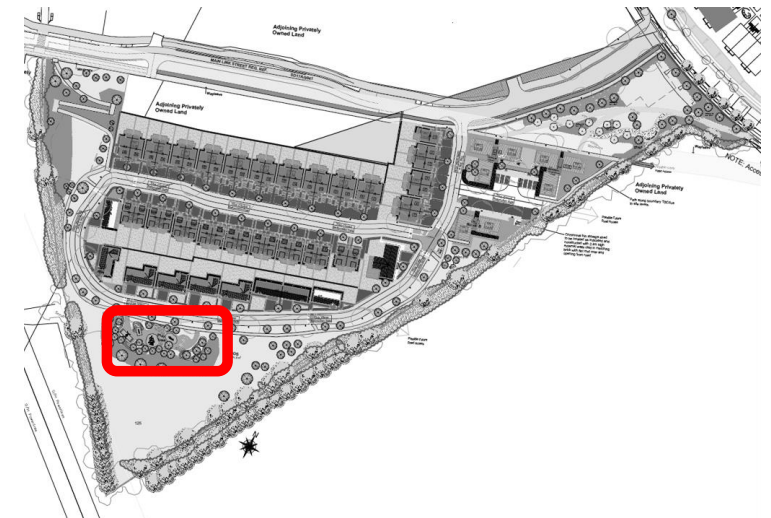
| Item no. NRO105-1001 | |
|-----------------------------|---|
| General Product Information | |
| Dimensions LxWxH | 412x50x115 cm |
| Age group | 4+ |
| Play capacity (users) | 2 |
| Colour options |   |

Seesaw NRO105

Natural Play Area Plan



Location Plan





All Organic Robinia products by KOMPAN are made of Robinia wood from sustainable European sources. On request it can be supplied as FSC® Certified (FSC® C004450).



The hardware is made of stainless steel or galvanized steel to ensure durable connections with a high corrosion resistance.



The Robinia wood can be supplied as untreated raw wood or painted with a brown coloured transparent pigment that maintains the golden wood colour of the wood.

Item no. NRO105-1001

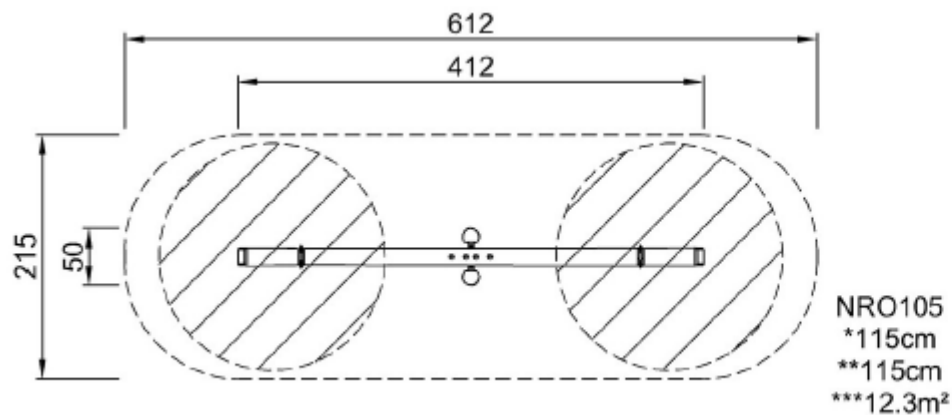
Installation Information

| | |
|--------------------------|---------------------|
| Max. fall height | 115 cm |
| Safety surfacing area | 12.3 m ² |
| Total installation time | 3.7 |
| Excavation volume | 0.58 m ³ |
| Concrete volume | 0.16 m ³ |
| Footing depth (standard) | 100 cm |
| Shipment weight | 192 kg |
| Anchoring options | In-ground ✓ |

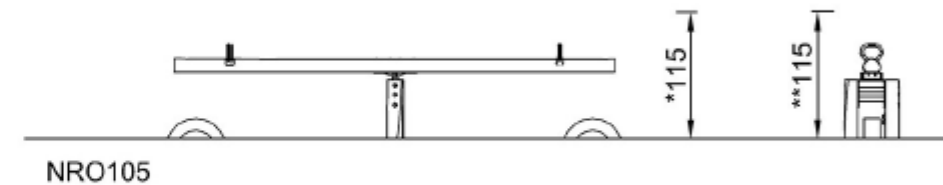
Warranty Information

| | |
|----------------------------|----------|
| Robinia wood | 15 years |
| Stainless steel components | Lifetime |
| Spare parts guaranteed | 10 years |

* Max fall height | ** Total height | *** Safety surfacing area



* Max fall height | ** Total height



Natural Play Equipment – Item 5



Double Swing with Cradle Seat

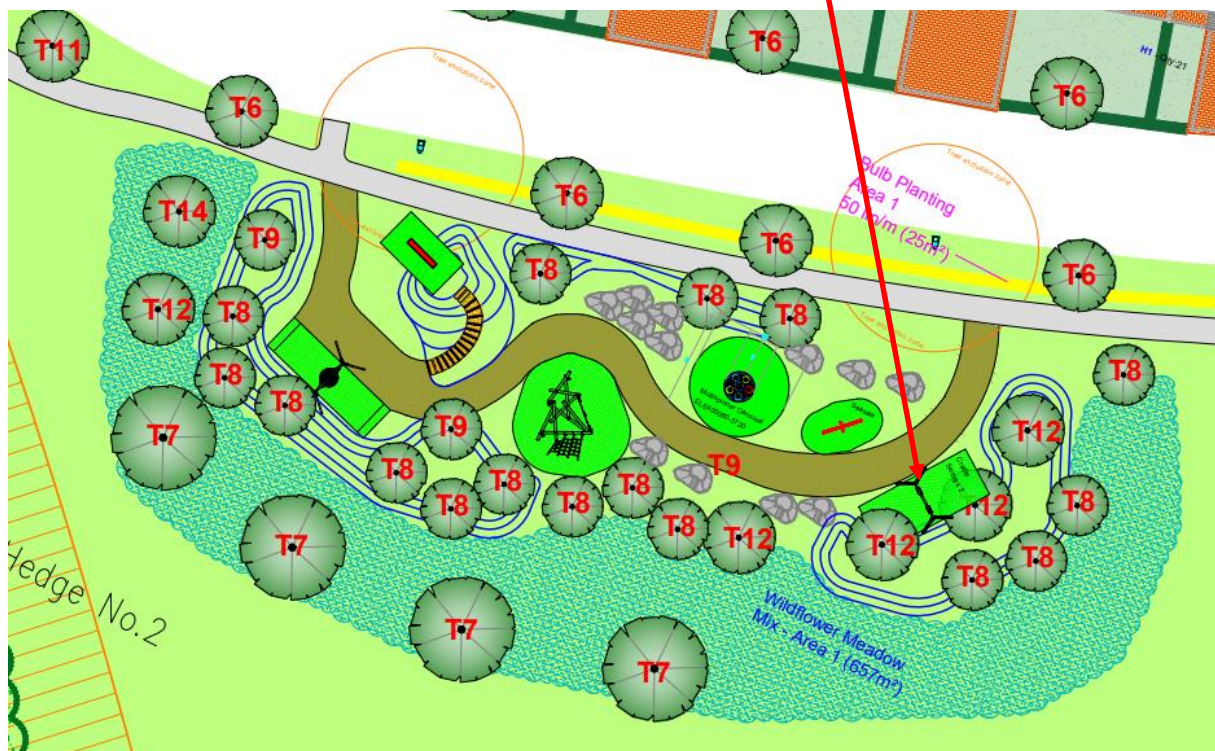
| Item no. SW990025-00 | |
|-----------------------------|-------------------------------------|
| General Product Information | |
| Dimensions LxWxH | 62x31x162 cm |
| Age group | 1+ |
| Play capacity (users) | 1 |
| Colour options | ● |



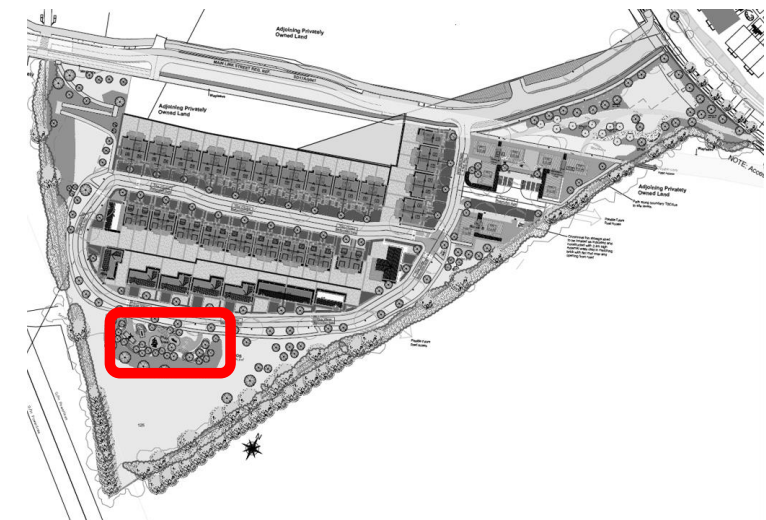
The standard seats of KOMPAN swings is engineered for maximum safety and durability. The two component seat with a PP inner core and outside rubber is produced in one operation. The seats are available with swing chains of either hot dip galvanised steel or stainless steel for all swings heights.



Natural Play Area Plan



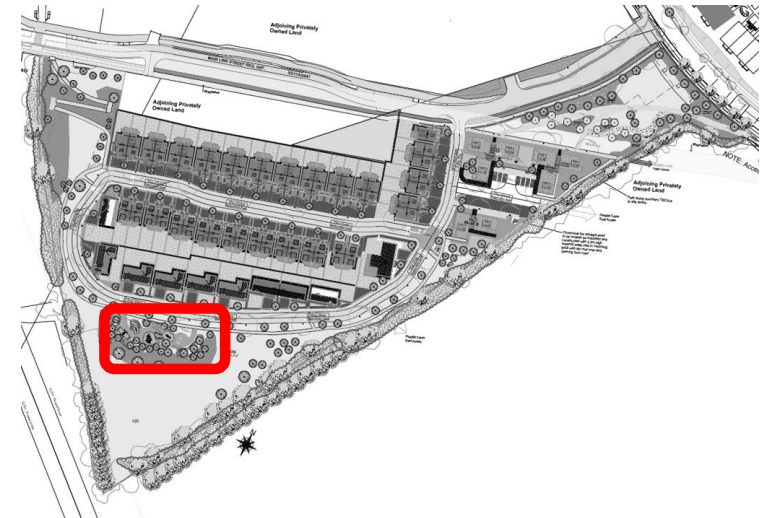
Location Plan



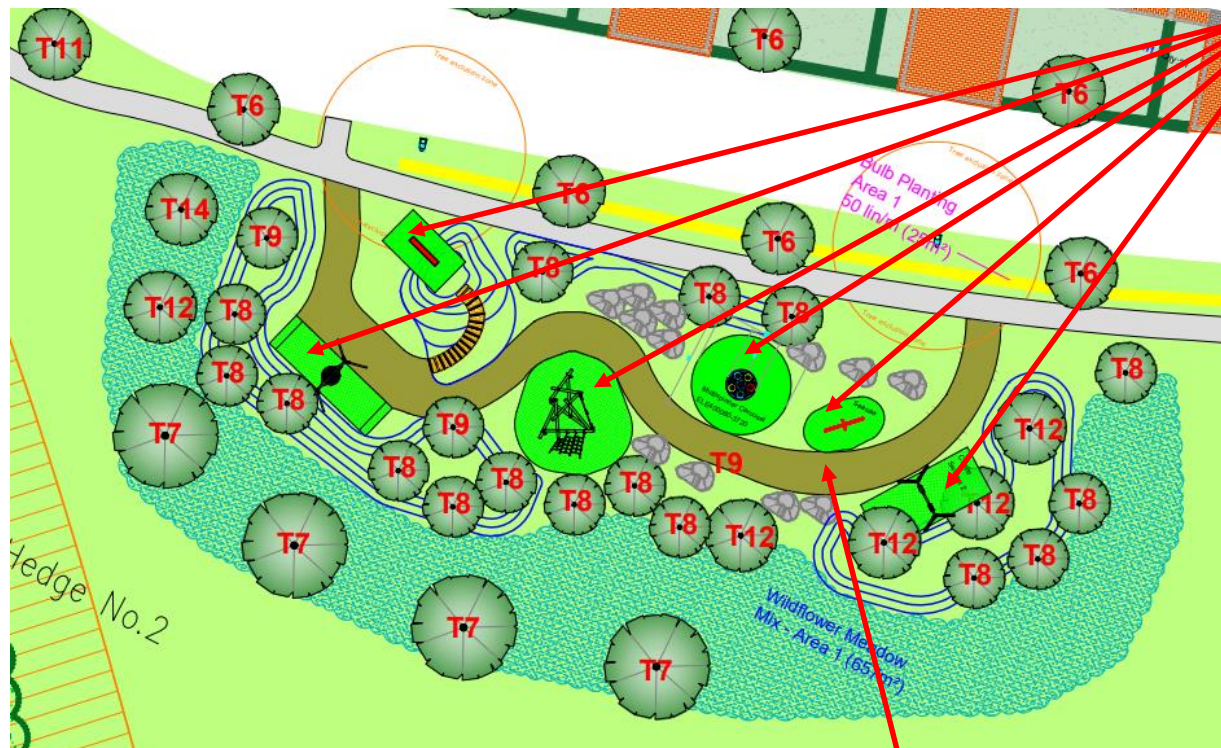
Playground Surfacing – Tiger Mulch



Location Plan



Natural Play Area Plan



Tiger Mulch – Woodland Colour.
Complies with the European
standard for Playground Surfacing
EN1177



Path – Compacted Ballylusk
Dust or Similar Approved.

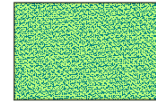
Proposed Bulb & Wildflower Planting

B1 - Seasonal Bulbs (300mm topsoil depth)
 Bulb planting in grass to be incorporated at 50 bulbs per sq. metre.
 Mowing to be reduced in accordance with suppliers instructions.



Proposed Bulb Planting (Block 2A1)

| Name | Time of Flowering | Variety | Bulb Size At Planting | Planting Guide | Plant Height |
|--------------|-------------------|---------------------------|-----------------------|--|--------------|
| A - Snowdrop | January | Galanthus nivalis | 5 - 6cm | 8cm Deep, 50/m ² | 15cm |
| B - Cyclamen | February | Cyclamen varieties | 13-15cm | 8cm Deep, 6cm Apart, 50/m ² | 10-15cm |
| C - Crocus | February | Tommasinianus | 14-16cm | 10cm Deep, 15cm Apart, 50/m ² | 7-15cm |
| D - Bluebell | March | Hyacinthoides non-scripta | 8 - 9cm | 15cm Deep, 50/m ² | 30cm |
| E - Tulip | April | Apeldoorn | 12-14cm | 15cm Deep, 10cm Apart, 50/m ² | 20-45cm |
| F - Camassia | May | Leicht Caerulea | 14-16cm | 10cm Deep, 20cm Apart, 50/m ² | 45cm |
| G - Allium | June | Allium sensation | 10-12cm | 15cm Deep, 15cm Apart, 50/m ² | 100cm |



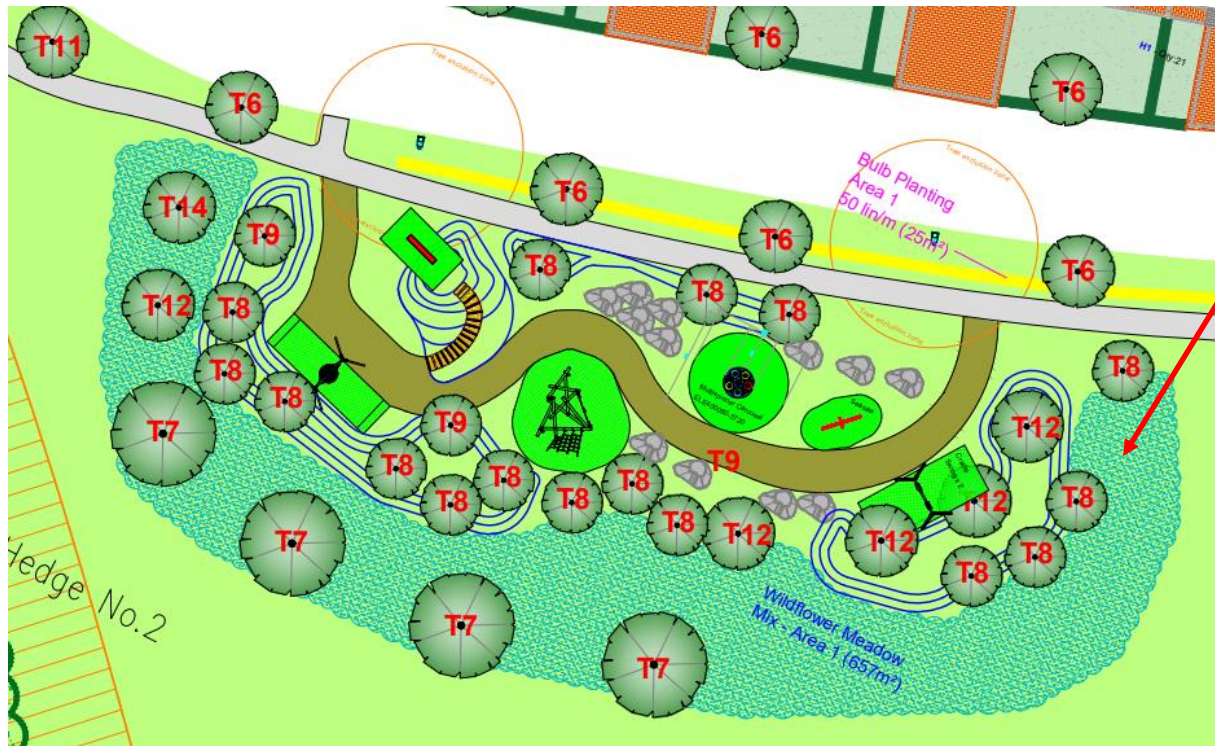
WILD FLOWER MEADOW MIX



Species List:

Black Meddock, Corn Marigold, Corn Poppy, Corncockle, Cornflower, Devil's bit, Field Scabious, Fleabane, Hemp Agrimony, Lesser Knapweed, Meadowsweet, Mullein, Ox-eye Daisy, Ragged Robin, Red Campion, Ribwort Plantain, Self heal, Scentless Mayweed, Sorrel, St Johnswort, Wild Angelica, Wild Carrot, Yarrow, Yellow Agrimony.

Natural Play Area Plan



Location Plan

