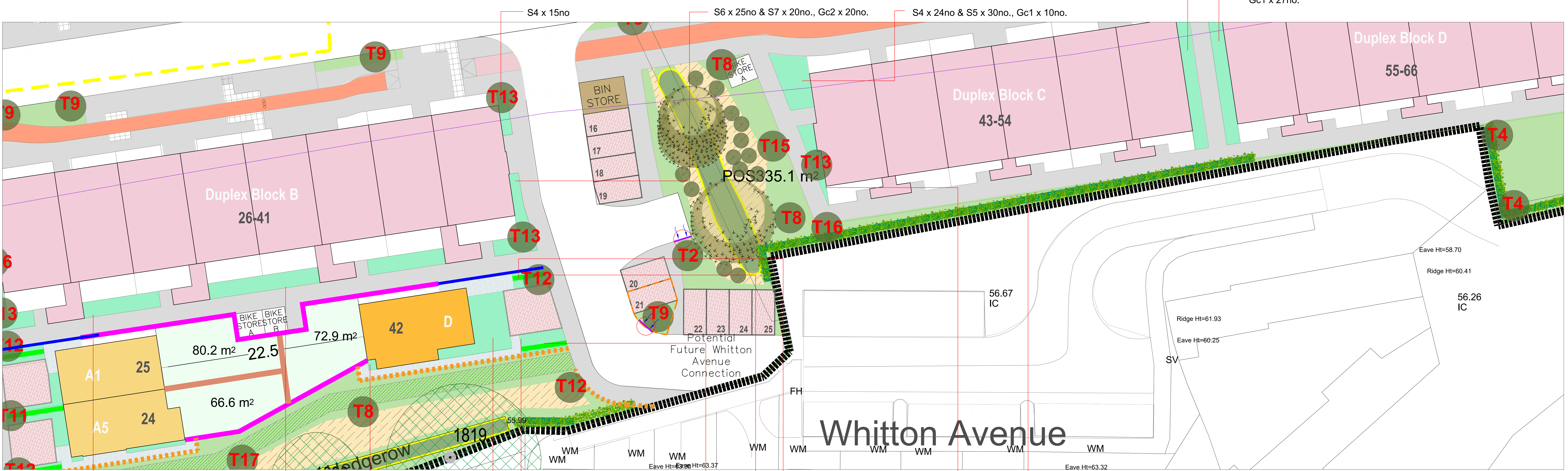
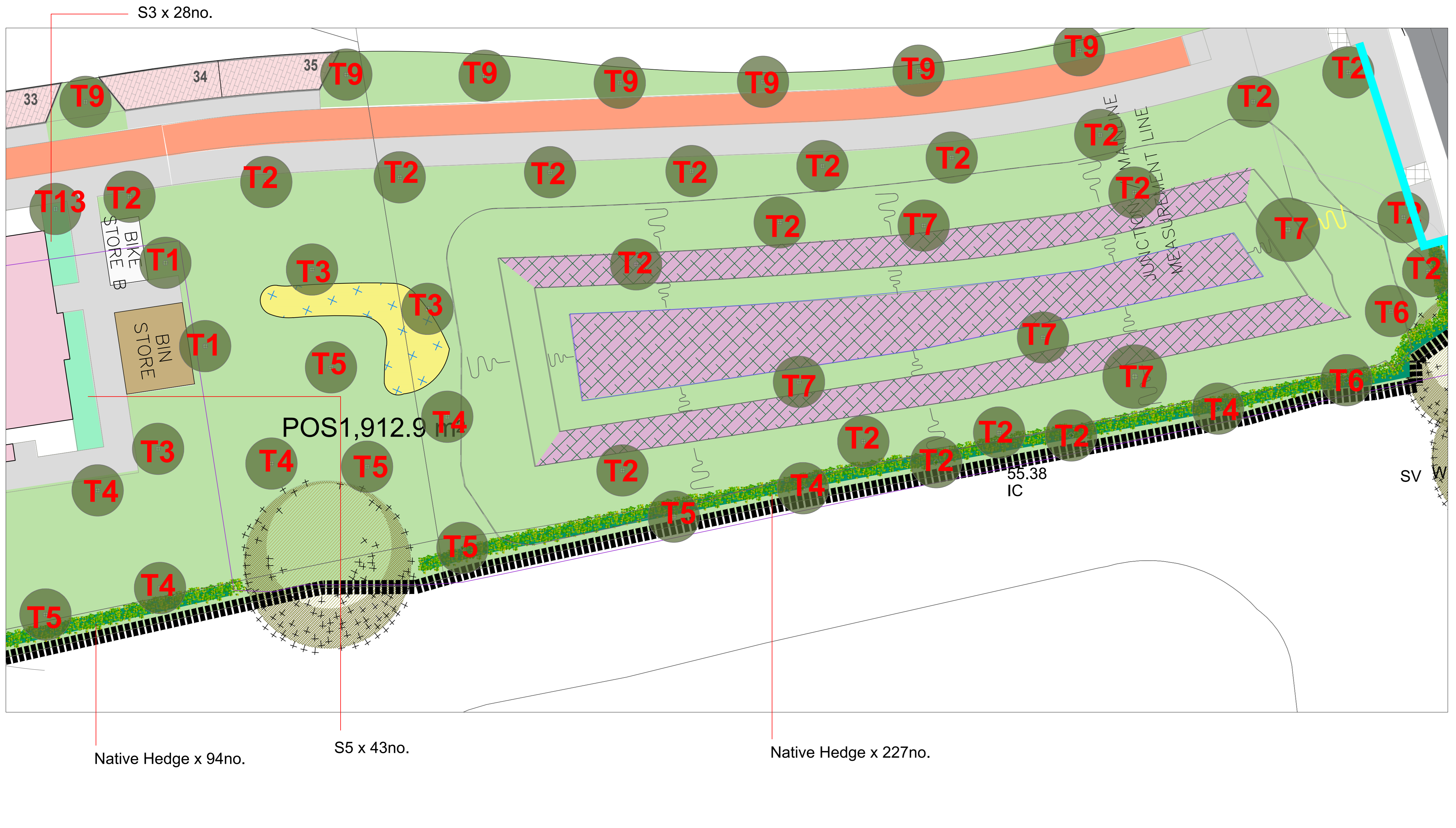


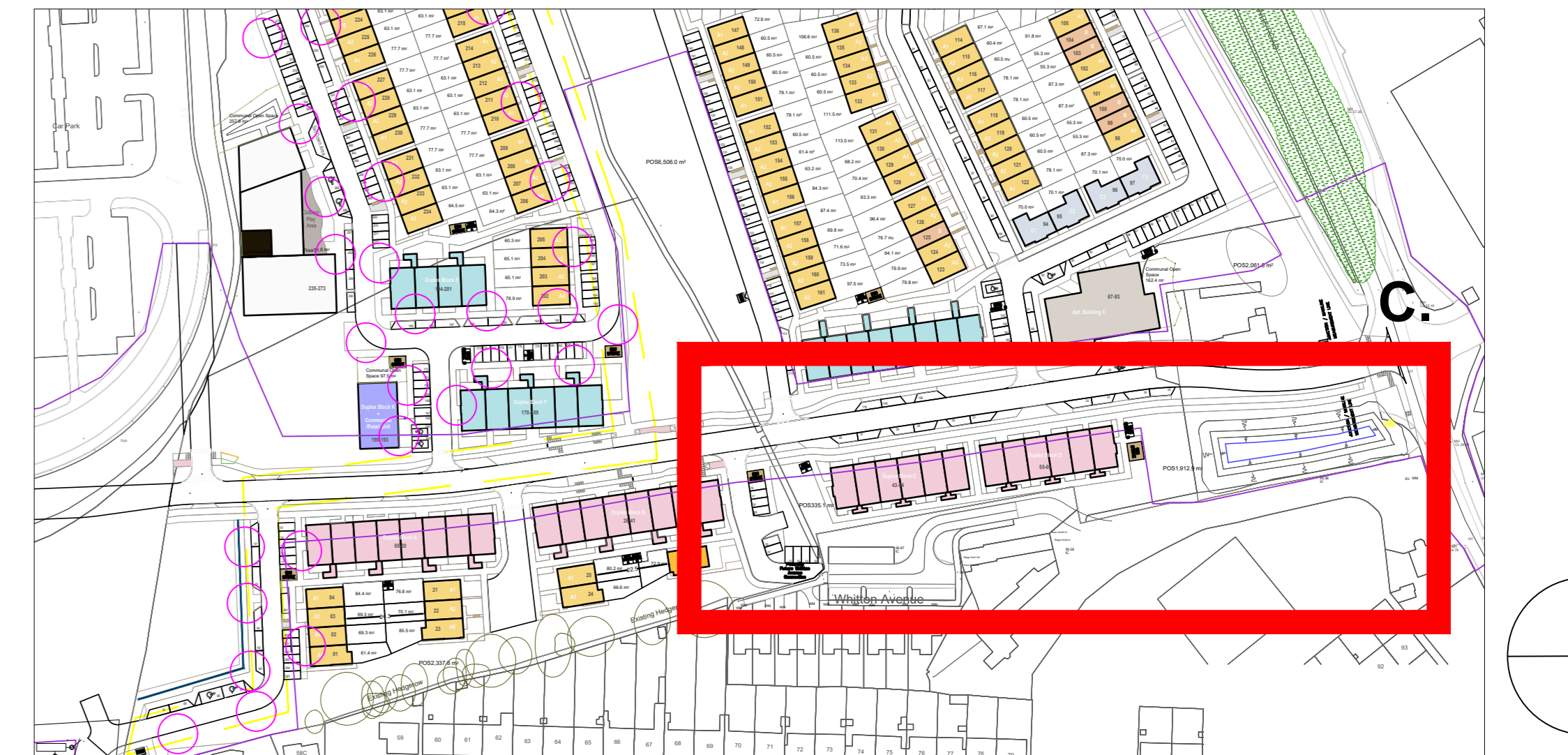
C.Planting Area 3 Scale (1:150)



C.Planting Area 3 cont. Scale (1:150)



Location Plan



Tree Pit Planting (as per 12.5sqm)

Groundcover	Qty
Persicaria affinis	15
Perennials	
Ligularia przewalskii 'The Rocket'	5
Astilbe spp. (Snowdrift, Hyacinth)	5
Iris pseudacorus	5
Achillea millefolium 'Song Siren Laura'	8
Bulb/Corm/Rhizome	
Aquilegia canadensis	3
Grass	
Miscanthus sinensis	4
Carex pendula or Panicum virgatum	4
Fern	
Dryopteris felix-mas or Dryopteris dilatata	4

M1 - Wild Flower Meadow (3grams per 1m) - approx. 3056 sq.m

Wildflower Meadow Mix 450mm topsoil depth

Species Name	Specification	Plant/m2	No.
Common knapweed - <i>Centaurea nigra</i>	c/g 3L 30-40cm ht.	3m²	1017
Ribwort plantain - <i>Plantago lanceolata</i>	c/g 3L 30-40cm ht.	4m²	2395
Red clover - <i>Trifolium pratense</i>	c/g 3L 30-40cm ht.	3m²	1875
Bird's-foot trefoil - <i>Lotus corniculatus</i>	c/g 3L 30-40cm ht.	3m²	1117
Bulbous buttercup - <i>Ranunculus bulbosus</i>	c/g 3L 30-40cm ht.	3m²	1803
Meadow buttercup - <i>Ranunculus acris</i>	c/g 2L 30-40cm ht.	5m²	1304
Lady's-bedstraw - <i>Galium verum</i>	c/g 2L 30-40cm ht.	5m²	333

Proposed Shrub Planting - 2908 sq.m

Code	Species Name	Specification	Plant/m2	No.
P.o.	<i>Prunus 'Oto Luyken'</i>	c/g 3L 30-40cm ht.	3m²	1017
L.a.	<i>Lavandula angustifolia</i>	c/g 3L 30-40cm ht.	4m²	2395
L.g.	<i>Libertia grandiflora</i>	c/g 3L 30-40cm ht.	3m²	1875
C.c.	<i>Cistus corbariensis</i>	c/g 3L 30-40cm ht.	3m²	1117
S.c.	<i>Sarcococca confusa</i>	c/g 3L 30-40cm ht.	3m²	1803
A.s.	<i>Astelia 'Silver Spear'</i>	c/g 2L 30-40cm ht.	5m²	1304
S.s.	<i>Sedum spectabile</i>	c/g 2L 30-40cm ht.	5m²	333

Proposed Ground Cover Planting 450mm topsoil depth

Code	Species Name	Specification	Plant/m2	No.
B.c.	<i>Bergenia cordifolia</i>	c/g 2L 30-40cm ht.	5m²	721
P.a.	<i>Persicaria affinis</i>	c/g 2L 30-40cm ht.	5m²	517
H.n.	<i>Helleborus niger</i>	c/g 2L 30-40cm ht.	5m²	402

W1 - Wetland Planting Mix (Attenuation Pond) - 376 sq.m

20% wildflowers

Achillea ptarmica, Centaurea nigra, Cirsium palustre, Filipendula ulmaria, Geranium pratense, Geum rivale, Hypericum tetrapterum, Hypochaeris radicata, Iris pseudacorus, Leucanthemum vulgare, Lotus uliginosus, Plantago lanceolata, Prunella vulgaris, Ranunculus acris, Ranhinanthus minor, Rumex acetosa, Scorzoneroideis autumnalis, Silene flos-cuculi, Succisa pratensis

80% grasses, sedges & rushes

Agrostis capillaris, Alopecurus pratensis, Carex ovalis, Deschampsia caespitosa, Festuca rubra, Phalaris arundinacea, Poa pratensis

H1 - Native Hedgerow (450mm topsoil depth / 100cm double row)

Species Name

Craetagus monogyna, Ilex aquifolium, Corylus avellana, Viburnum opulus

- approx. 1055.0 lin/m

H2 - Evergreen hedgerow (450mm topsoil depth / 100cm single row)

Ligustrum vulgare - approx. 669.0 lin/m

Project Title: Clonburris SDZ at Dublin 22

REV	DATE	BY	CHECKED	DESCRIPTION
L	18/10/2023	PR	RMD	Compliance
K	31/10/2023	PR	RMD	Compliance
J	16/10/2023	PR	RMD	Compliance
J	13/10/2023	PR	RMD	Compliance
I	10/10/2023	PR	RMD	Compliance
H	28/09/2023	PR	RMD	Compliance
G	22/09/2023	PR	RMD	Compliance
F	15/08/2023	PR	RMD	Compliance
E	07/07/2023	PR	RMD	Compliance

Client: Kelland Homes Dwg No. 06 LPP

Drawing Title: Landscape Planting Plan (I) Scale: Varies

Job No. 1577 Date: 12/11/2020

Ronan MacDiarmada + Associates Ltd.
Landscape Architects and Consultants.

5 Tooterhill, Rathcoole, Co. Dublin
tel: +353 1 412 4476 mob: 086 26 25 438
fax: +353 1 401 3748 e-mail: ronan@rmda.ie

This Drawing is Copyright ©