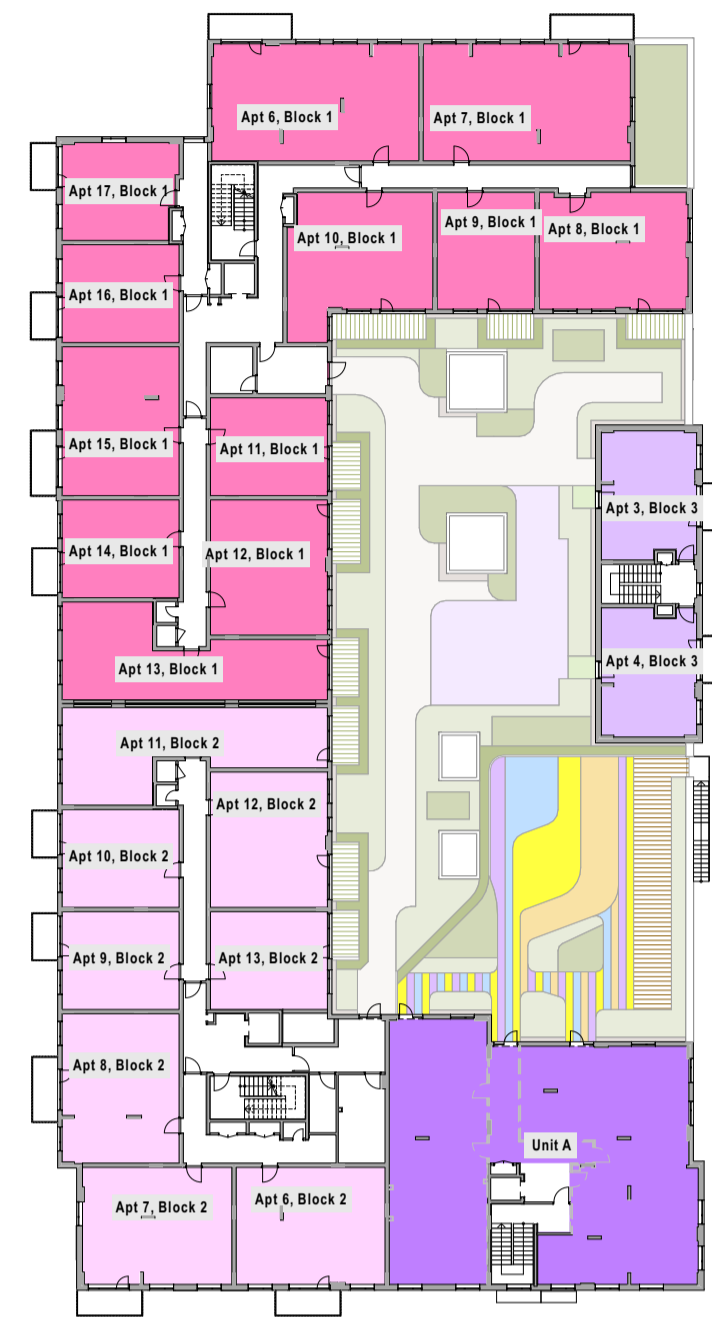


1. This drawing is the property of Altu Architects Ltd. It must not be copied or given to a third party without the permission of Altu Architects Ltd.
2. Work to figured dimensions only. Do not scale the drawing.
3. The contractor is responsible for checking all dimensions and levels on site and shall refer all discrepancies to the Project Architect.
4. Drawings to be read in conjunction with all relevant engineers drawings. Mechanical and electrical, any structural or services information shown on this drawing is indicative only.
5. The contractor shall be responsible for the coordination of all structure, services and finishes.
6. Proprietary items shall be fixed in strict accordance with manufacturers instructions.
7. This drawing shall only be used for the work stage as denoted and no subsequent stage.



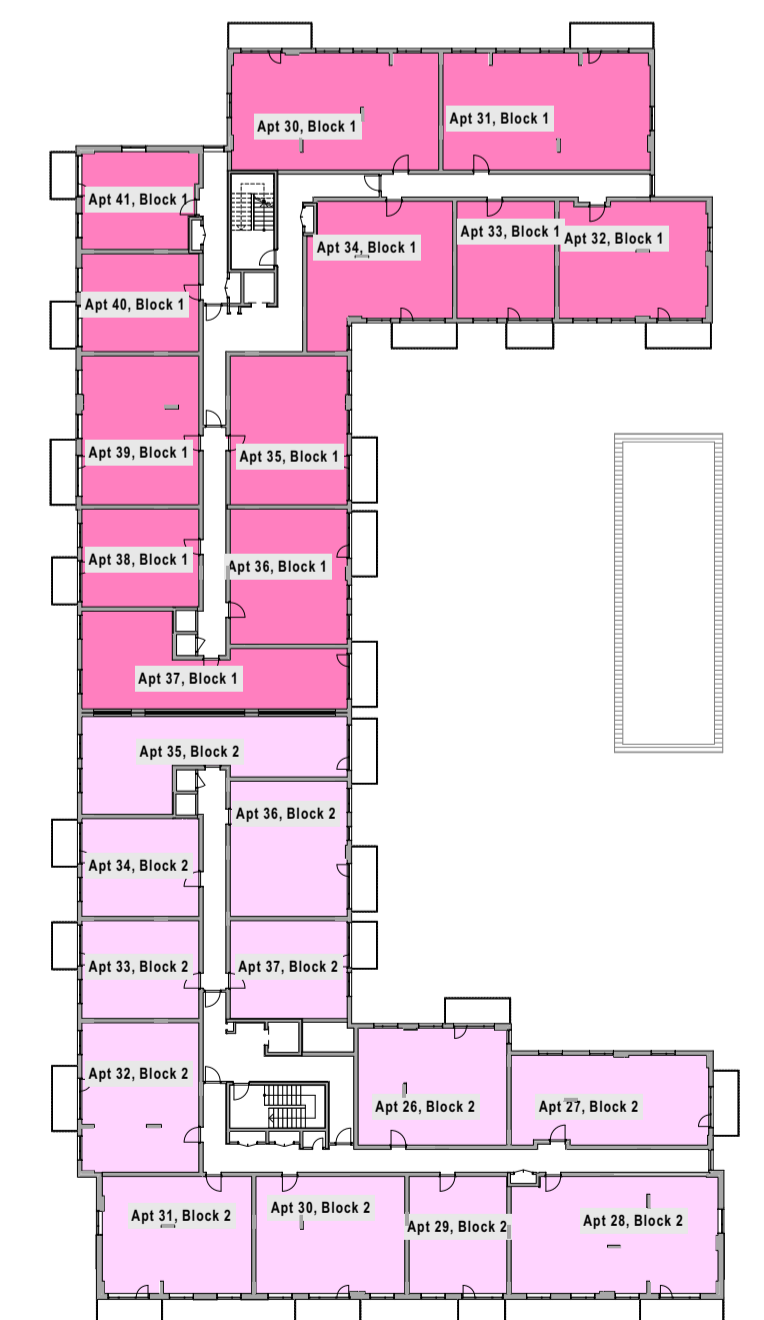
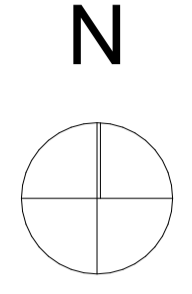
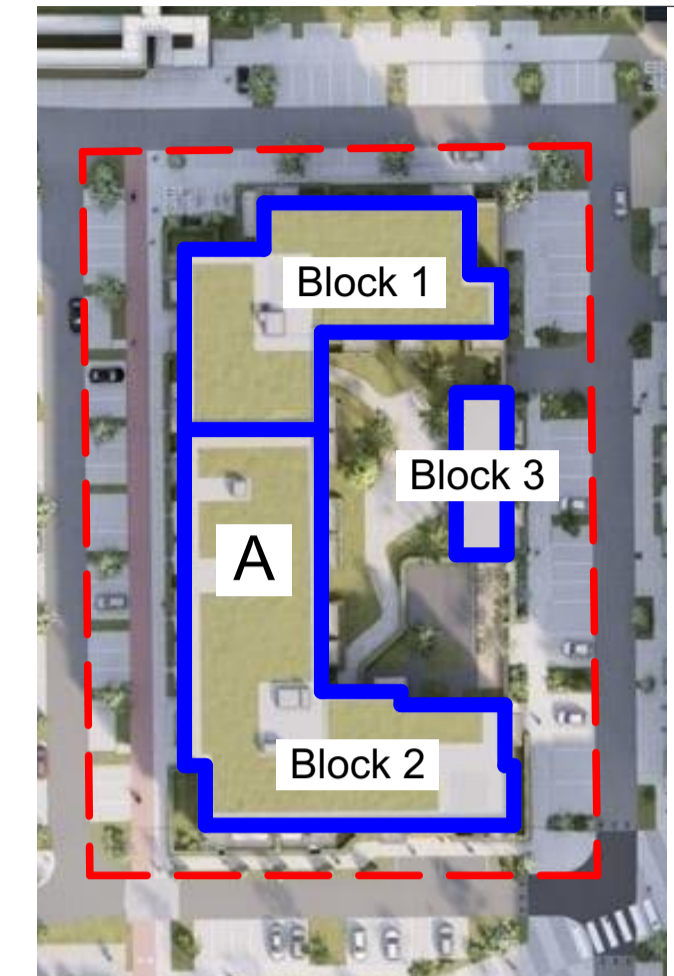
Level 00
Scale:1:500



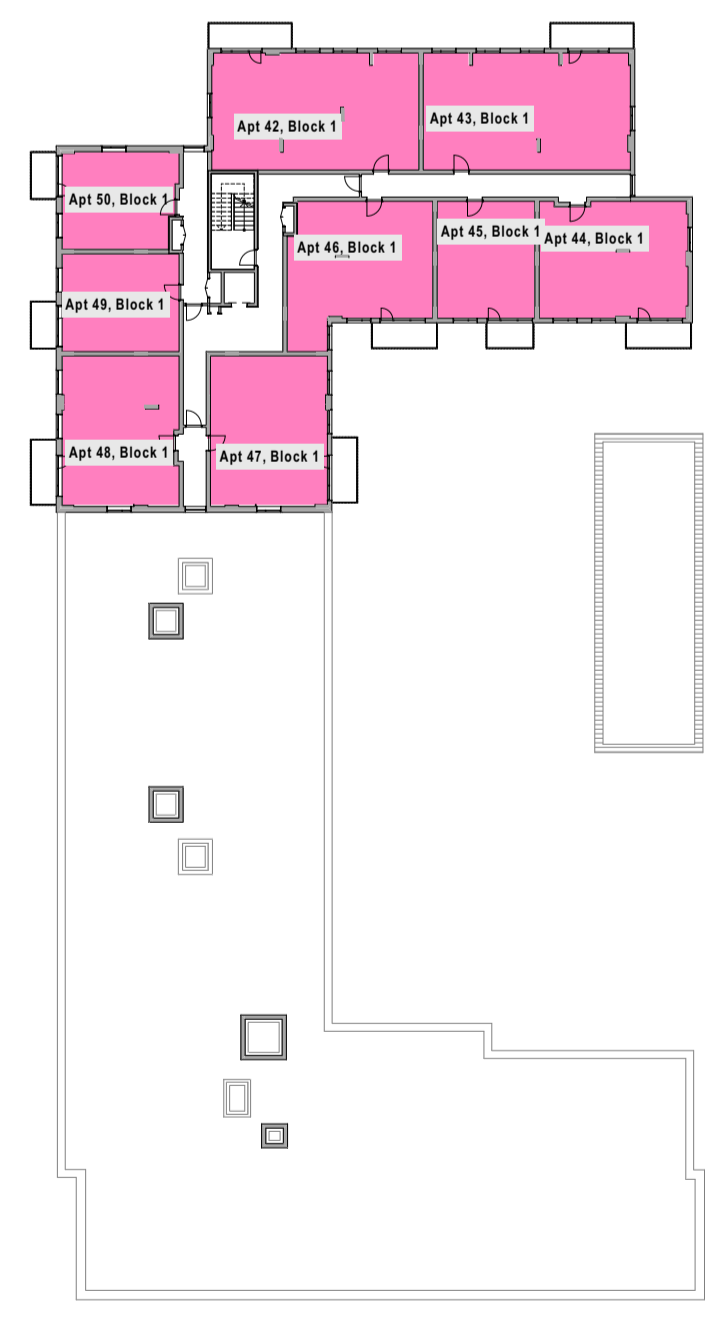
Level 01
Scale:1:500



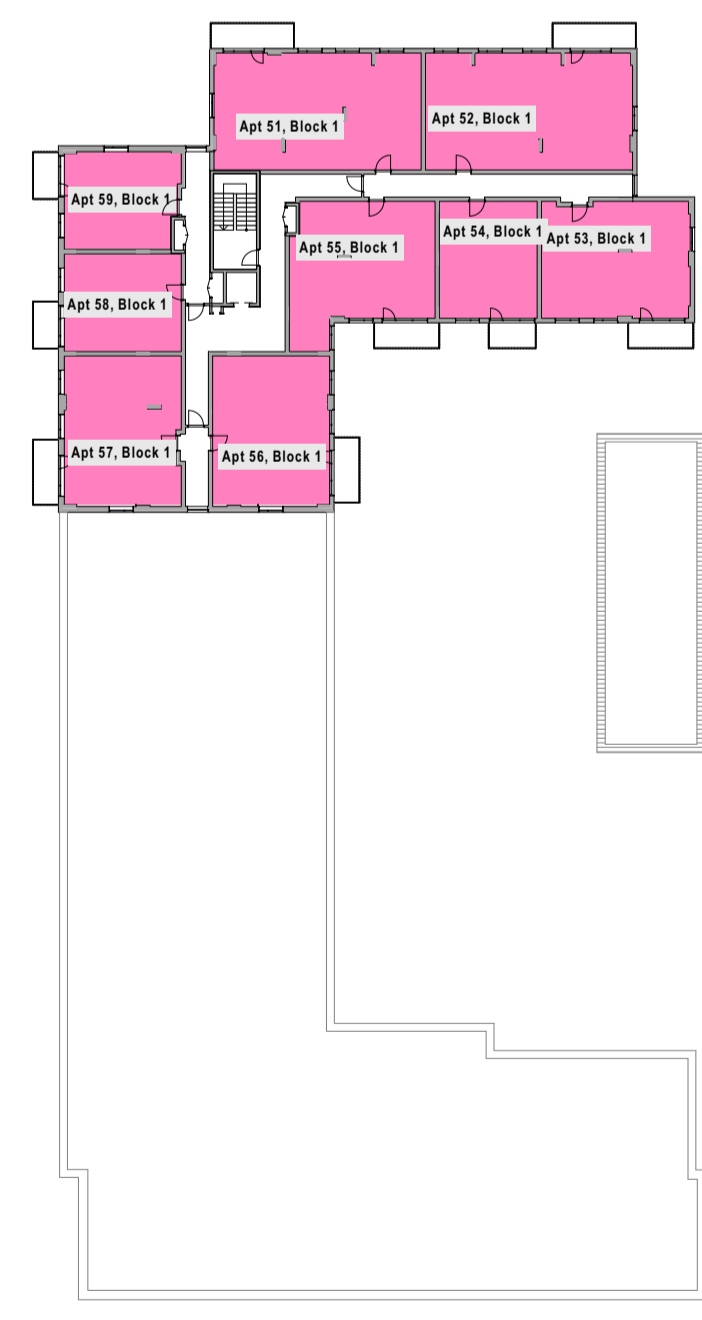
Level 02
Scale:1:500



Level 03
Scale:1:500







Level 04
Scale:1:500



Level 05
Scale:1:500

NUMBERING LEGEND

-  Unit A, The Place Cooper Square Seven Mills Dublin 22
-  Apt. 1 to 59, Block 1 The Place Cooper Square Seven Mills Dublin 22
-  Apt. 1 to 37, Block 2 The Place Cooper Square Seven Mills Dublin 22
-  Apt. 1 to 4, Block 3 The Place Cooper Square Seven Mills Dublin 22

Rev	Date	Description	Issued By	Checked By

ALTU Architects
14/15 Camden Street Lower
Dublin 2
T: +353 (0)1 254 6996
E: info@altuarchitects.ie
W: altuarchitects.ie

PLANNING COMPLIANCE

Client: Cairn Homes
Project: Seven Mills Block A
Drawing: Numbering and Naming

Job No	Scale @ A1	Status	Revision
21042	1:500		

2600