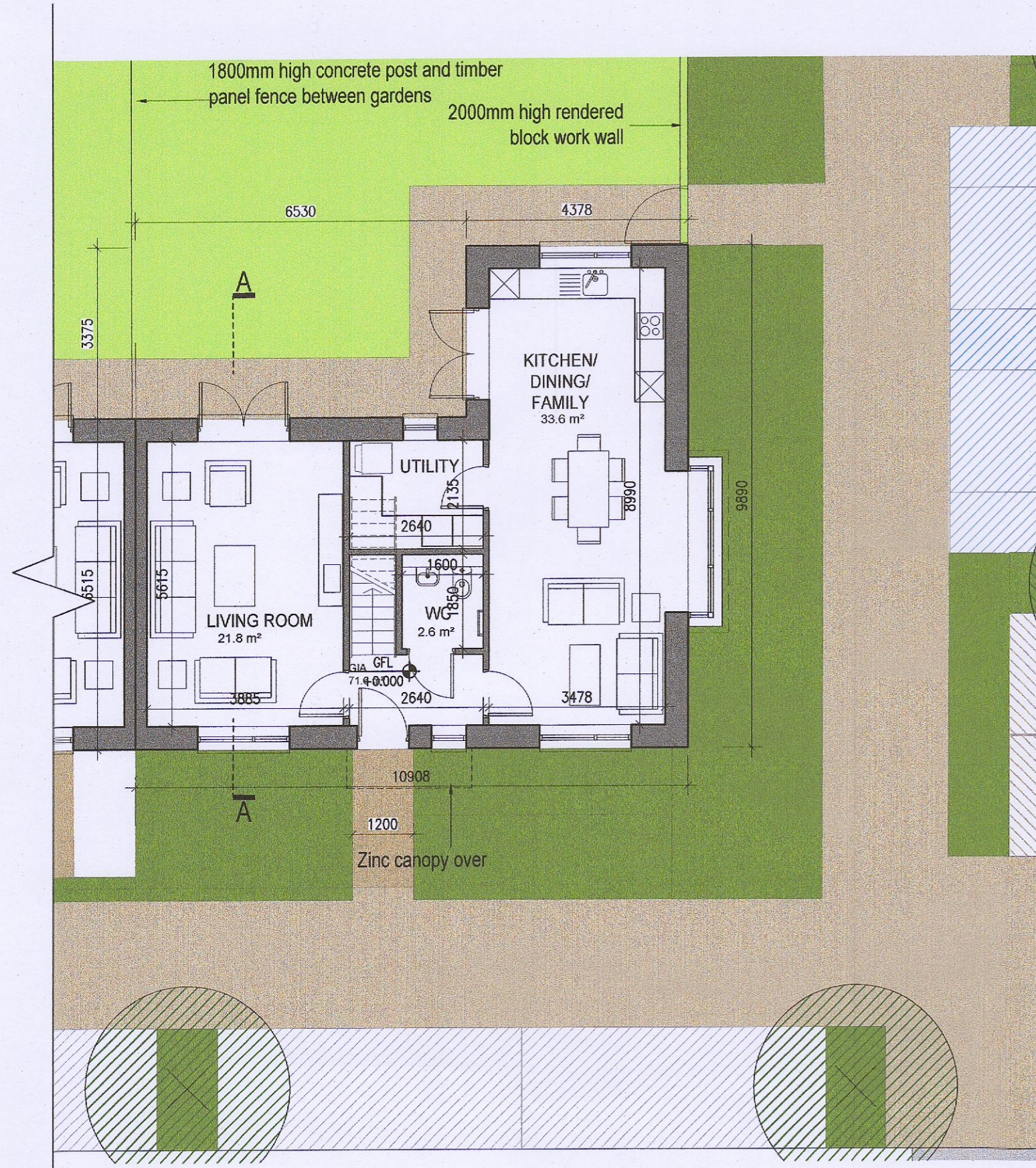
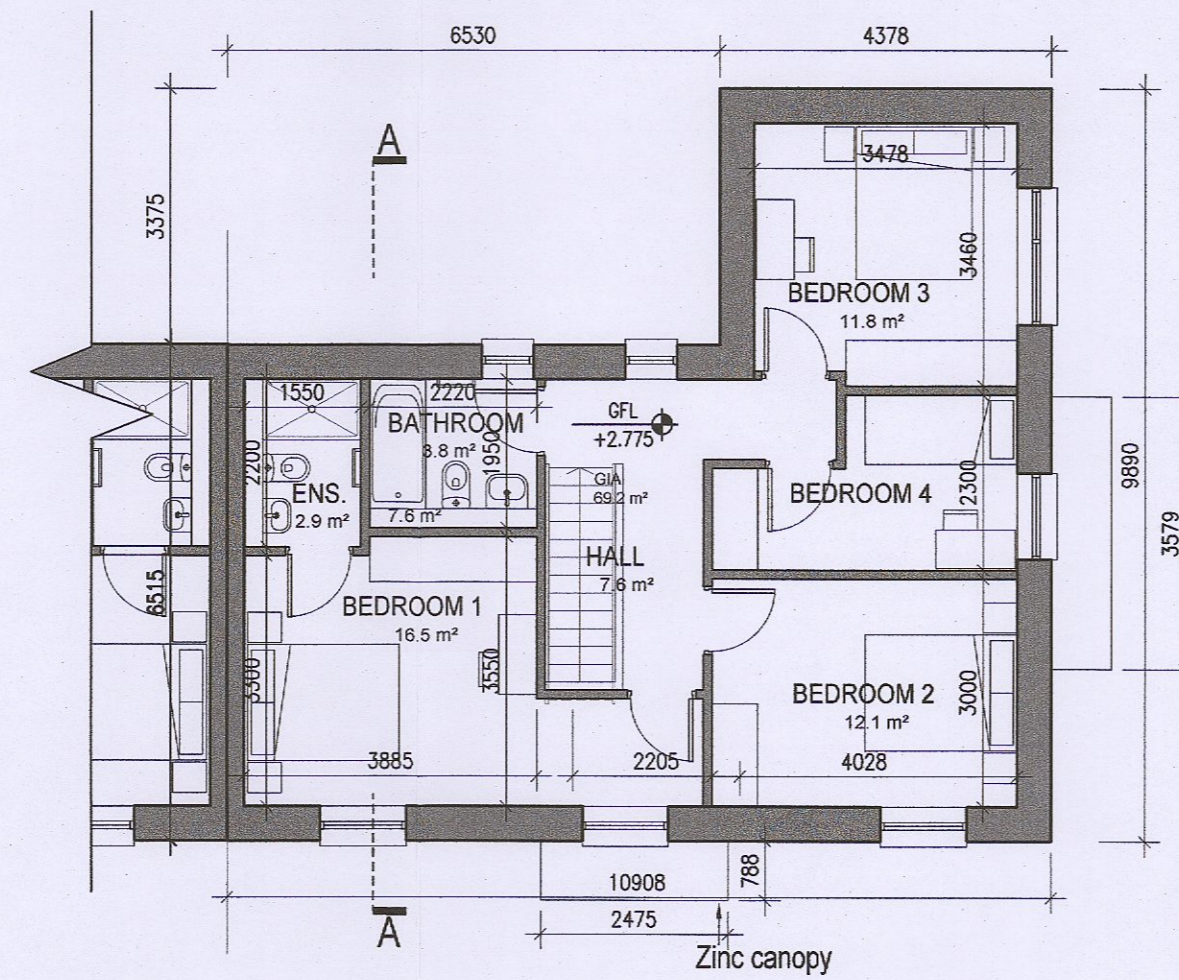


**HOUSE TYPE C1
HANDED**

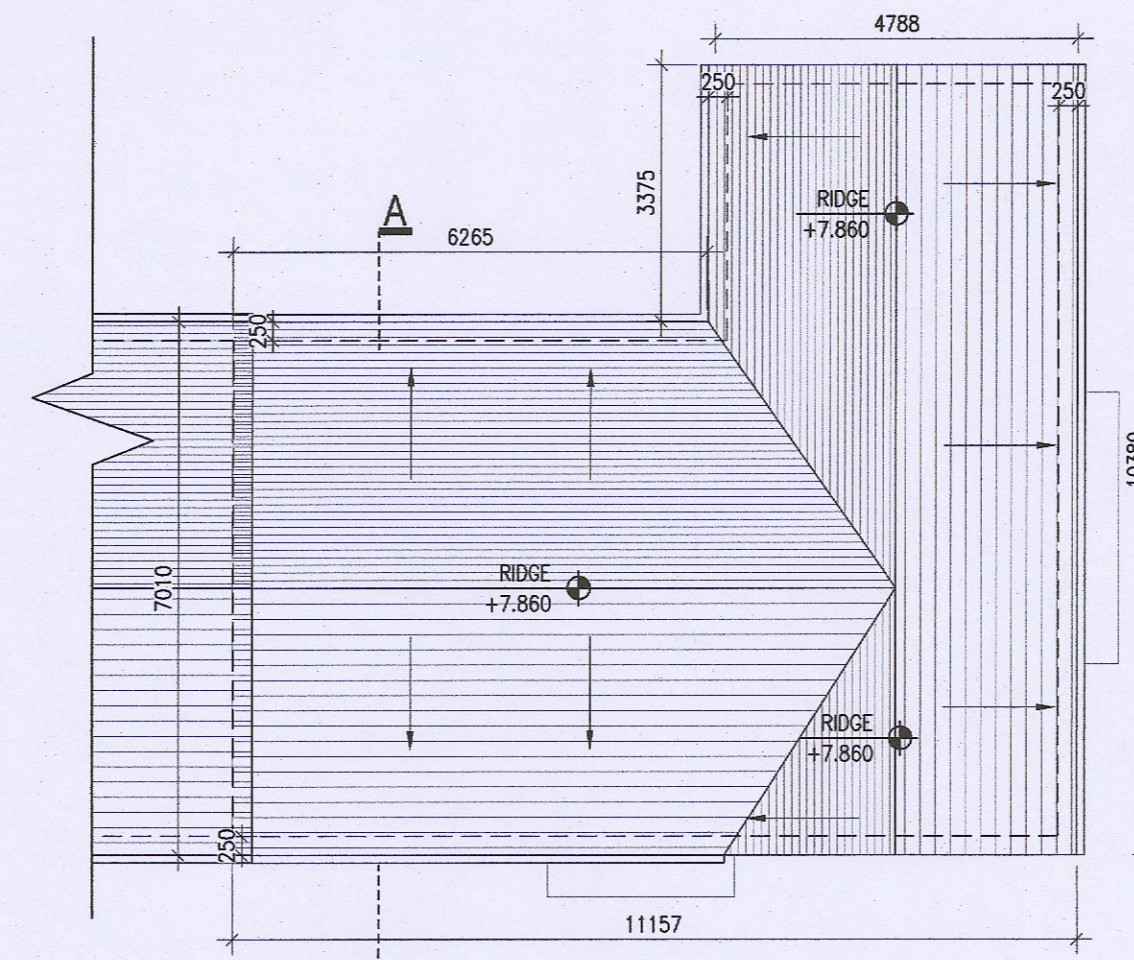


01
115
Ground Floor Plan

Ground floor area 71.6 m²
First floor area 69.2 m²
Total Floor Area (4-bed unit): 140.7 m²



02
115
First Floor Plan



03
115
Roof Floor Plan
1:100@A1



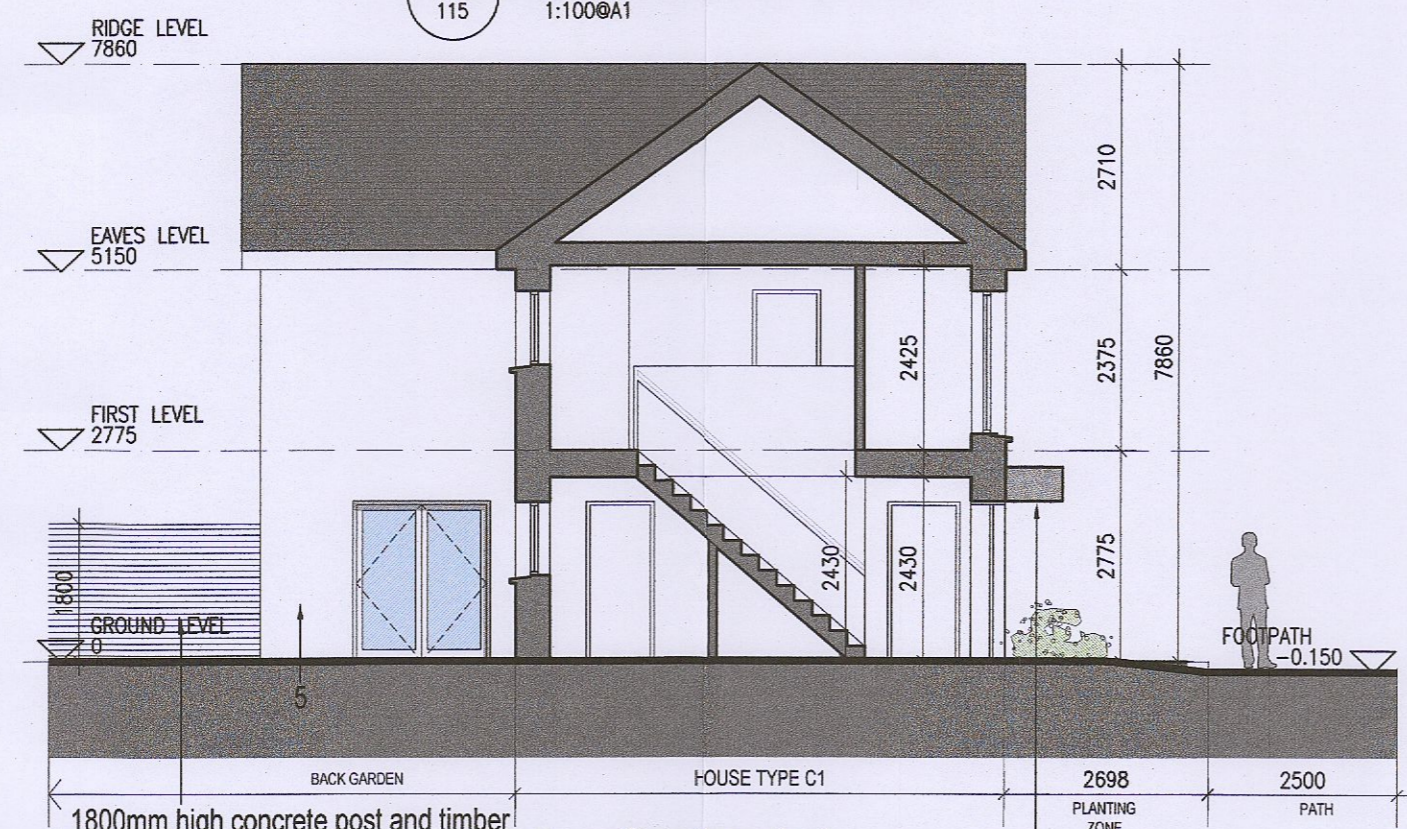
04
115
Front Elevation
1:100@A1



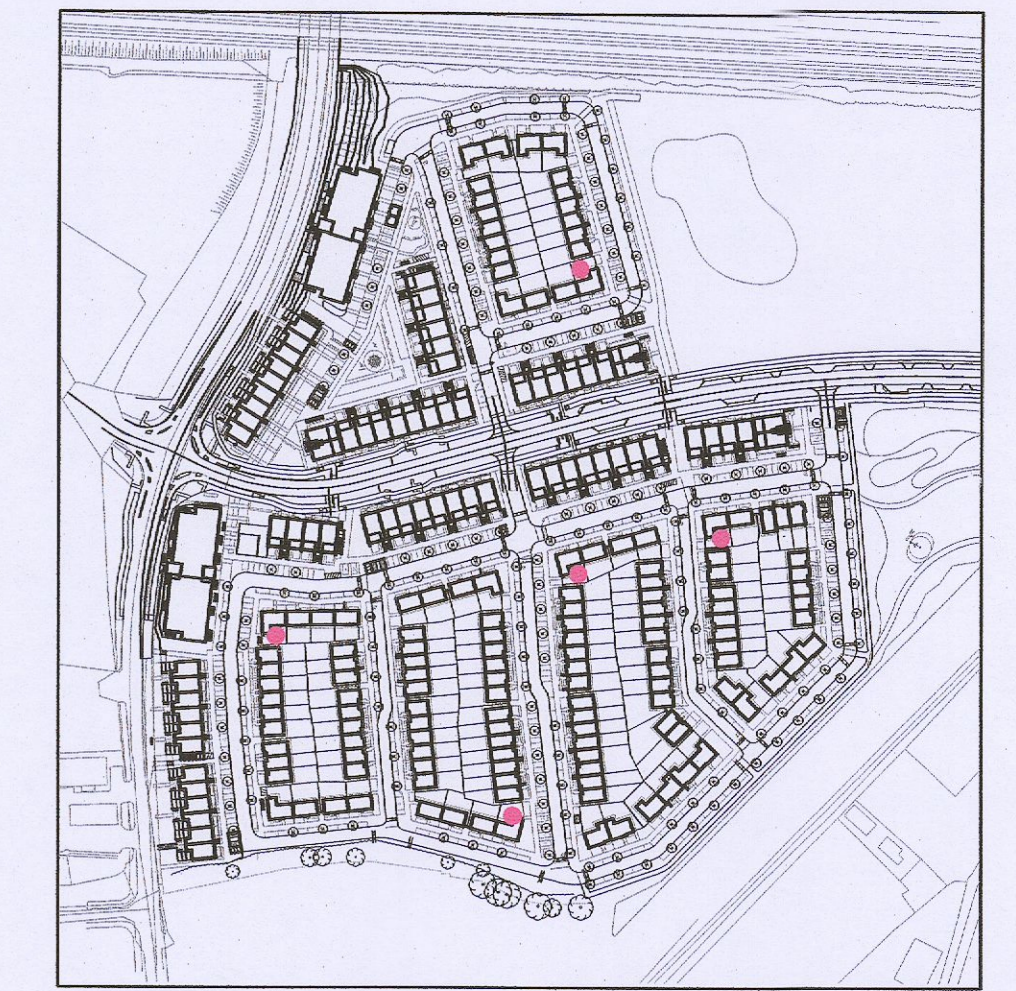
05
115
Rear Elevation
1:100@A1



06
115
Side Elevation
1:100@A1



07
115
Section A-A
1:100@A1



Indicates unit locations
KEY PLAN [NTS]

HOUSE TYPES	unit type	No. of beds	No. of storeys	No. of units
Type A	- 4 bed	3 storeys	11	
Type B	- 4 bed	3 storeys	15	
Type C	- 4 bed	2 storeys	08	
Type D	- 3 bed	2 storeys	46	
Type E	- 3 bed	2 storeys	41	
Type F	- 3 bed	2 storeys	18	
				139

EXTERNAL FINISHES

- WALLS:** PAINTED SAND / CEMENT RENDER OR PROPRIETARY PRECOLOURED RENDER FINISH SELECTED BRICKWORK WHERE INDICATED ON DRAWINGS
- WINDOWS:** SELECTED PROPRIETARY DOUBLE / TRIPLE GLAZED WINDOW SYSTEM WITH FRAMES TO APPROVED COLOUR OBTAINED TO BATHROOMS AND EN-SUITES.
- DOORS:** SELECTED PROPRIETARY DOORS AND GLAZED SIDE SCREENS TO APPROVED COLOUR.
- RAINWATER GOODS:** uPVC OR POWDER COATED METAL GUTTERS AND RAINWATER PIPES TO SELECTED COLOUR.
- MAIN ROOF:** CONCRETE ROOF TILES IN SELECTED COLOUR.
- LOW LEVEL PROJECTION:** ZINC CANOPY TO ENTRANCE OF UNITS
- OTHER ITEMS:** uPVC OR POWDER COATED METAL FASCIAS, SOFFITS AND BARGE BOARDS PAINTED MILDSTEEL RAILINGS AND BALUSTRADES

MATERIAL CODE LEGEND

- 01 - BUFF BRICK - STANDARD BOND LIGHT APPROVED TONE
- 02 - BUFF BRICK - FEATURE BOND LIGHT APPROVED TONE
- 03 - BUFF BRICK - STANDARD BOND BROWN APPROVED TONE
- 04 - BUFF BRICK - FEATURE BOND BROWN APPROVED TONE
- 05 - SELF COLOURED RENDER LIGHT APPROVED TONE
- 06 - SELF COLOURED RENDER DARK APPROVED TONE
- 07 - CONCRETE ROOF TILES DARK APPROVED TONE
- 08 - POWDERCOATED METALWORK OR uPVC DARK APPROVED RAL COLOUR
- 09 - POWDERCOATED METAL SCREENING - DARK APPROVED RAL COLOUR
- 10 - CLEAR GLAZING WITH DARK APPROVED RAL COLOUR FRAMING
- 11 - OPAQUED GLAZING WITH DARK APPROVED RAL COLOUR FRAMING

REFER TO STREET ELEVATIONS FOR LOCATION OF ELEVATION TYPES

REFER TO LANDSCAPE ARCHITECT'S DRAWINGS FOR ALL LANDSCAPING DETAILS INCLUDING BOUNDARY TREATMENTS

Notes	Issue Status
1. Copyright Reserved	Progress
2. Work to figured dimensions only. Do not scale drawing	Planning Application
3. The contractor is responsible for checking all levels and dimensions on site and shall refer all discrepancies to the Architect	Fire Cert
4. Where appropriate, for details of r.c. structure, or mechanical and electrical details, see Engineers drawings	Disability Cert
5. Proprietary items shall be fixed in strict accordance with manufacturers instructions.	Tender
6. Sizes of proprietary items shall be checked with manufacturer.	Construction
7. The contractor shall be responsible for the coordination of structure, finishes and services.	As Built
	Information Only

No.	Date	Revision	Initials
01	22/01/23	Planning Application	FJ
02	01/11/23	RFI Submission	RT

Project: **Adamstown Extension - Clonburris SDZ Residential Development**

Drawing Title: **House Type C1_End_Handed_Plans, Elevations and Section**

Drawing No: **6268-P-115**

Scale: **1:100 @ A1** | Rev: **02** | Drawn: **[FJ]** | Date: **Jan'23**

Project Address: **6 - 7 HARPOURT TERRACE, DUBLIN 2, IRELAND**
 Tel: **+353-1-910 2400** | Fax: **+353-1-910 7885**
 www.bkd.ie | **bkd architects** BURKE-KENNEDY DOYLE