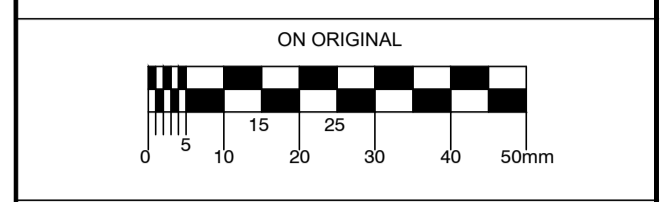
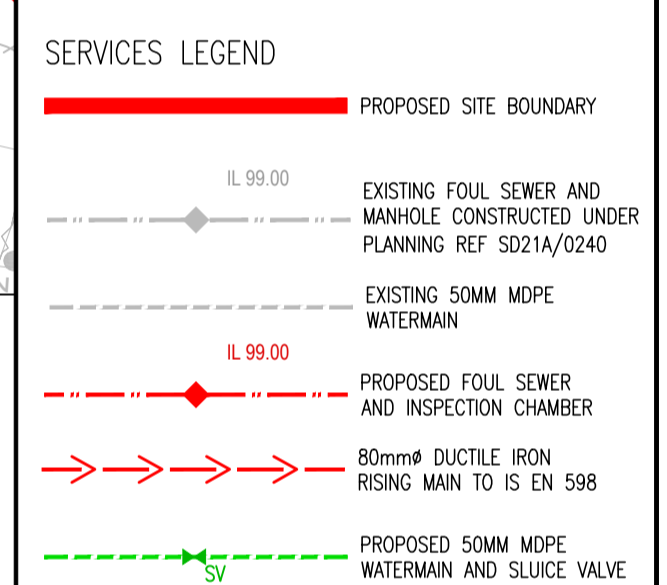


© COPYRIGHT OF THIS DRAWING IS RESERVED BY DBFL CONSULTING ENGINEERS. NO PART SHALL BE REPRODUCED OR TRANSMITTED WITHOUT THEIR WRITTEN PERMISSION.
 NO CHANGES OF WHATSOEVER NATURE ARE TO BE MADE TO ANY DETAILS SET OUT OR CONTAINED IN ANY DBFL SPECIFICATIONS OR DRAWINGS UNLESS THE EXPRESS CONSENT HAS BEEN OBTAINED IN ADVANCE, IN WRITING, FROM DBFL.



- NOTES:
- PUMPS TO BE INSTALLED TO MANUFACTURERS DETAILS & SPECIFICATION
 - PUMP MANUFACTURER TO SUPPLY DETAILS OF STANDARD ANNUAL MAINTENANCE FOR PUMPS
 - PUMP MANUFACTURER TO SUPPLY DETAILS OF RECOMMENDED SPARE PARTS FOR 20 YEARS OPERATION
 - CALVANISED STEEL ACCESS COVER TO BE PROVIDED ON ALL CHAMBERS WITH NON-SLIP SURFACE. ALL COVERS TO BE LOCKABLE. CHAMBER COVERS TO COMPLY WITH BS EN 124.
 - DAWTS & SOCKETS TO BE GALVANISED.
 - LIFTING DAWTS, TACKLE AND SOCKETS SHOULD BE RATED TO LIFT TWICE THE WEIGHT OF EACH PUMP UNIT WITH A MINIMUM RATING OF 500kg, SAFE WORKING LOAD.
 - ALL METAL EQUIPMENT ON THE PUMP STATION SITE TO BE BONDED TO EARTH. EARTH ROD WITH INSPECTION PIT TO BE INSTALLED.
 - MINIMUM PUMP CUT-OUT LEVEL TO BE ABOVE THE TOP OF THE PUMP MOTORS.
 - ALL DUCTING FROM PUMP CHAMBER TO BE SEALED AIRTIGHT.
 - ELECTRICAL REQUIREMENTS TO MEET IRISH WATER CODE OF PRACTICE FOR WASTEWATER.
 - PUMPING STATION TO HAVE REMOTE/ALARM MONITORING TO MEET IRISH WATER REQUIREMENTS.
 - PUMPS TO BE DUTY/STANDBY SUBMERSIBLE
 - PUMPS TO BE MOUNTED ON A CAST IRON COUPLING/DUCK-FOOT PEDESTAL.
 - ALL PIPE WORK AND VALVES TO BE DUCTILE IRON TO IS EN 598 SUITABLE FOR USE WITH SEWERAGE WITH PN-16 FLANGES TO BS EN 1092-1.
 - Puddle flanges to be used to ensure a seal between pipes and in-situ concrete surround.
 - ALL IN-SITU CONCRETE TO BE C20/25 TO IS EN 206.
 - ALL OPENING TO BE CORED AND SEALED WITH FORSHEDA F310 WALL SEALS IN ACCORDANCE WITH MANUFACTURERS INSTRUCTIONS OR SIMILAR APPROVED PRODUCT.



P01	16-02-22	ISSUED FOR PLANNING RESPONSE	TCA	JK
P01	17-11-22	ISSUED FOR PLANNING	TCA	KJS
REV	DATE	DESCRIPTION	BY	CHKD

PLANNING

DESIGNED	TCA	PREPARED	TCA
DATE	OCT 2022	CHECKED	KJS

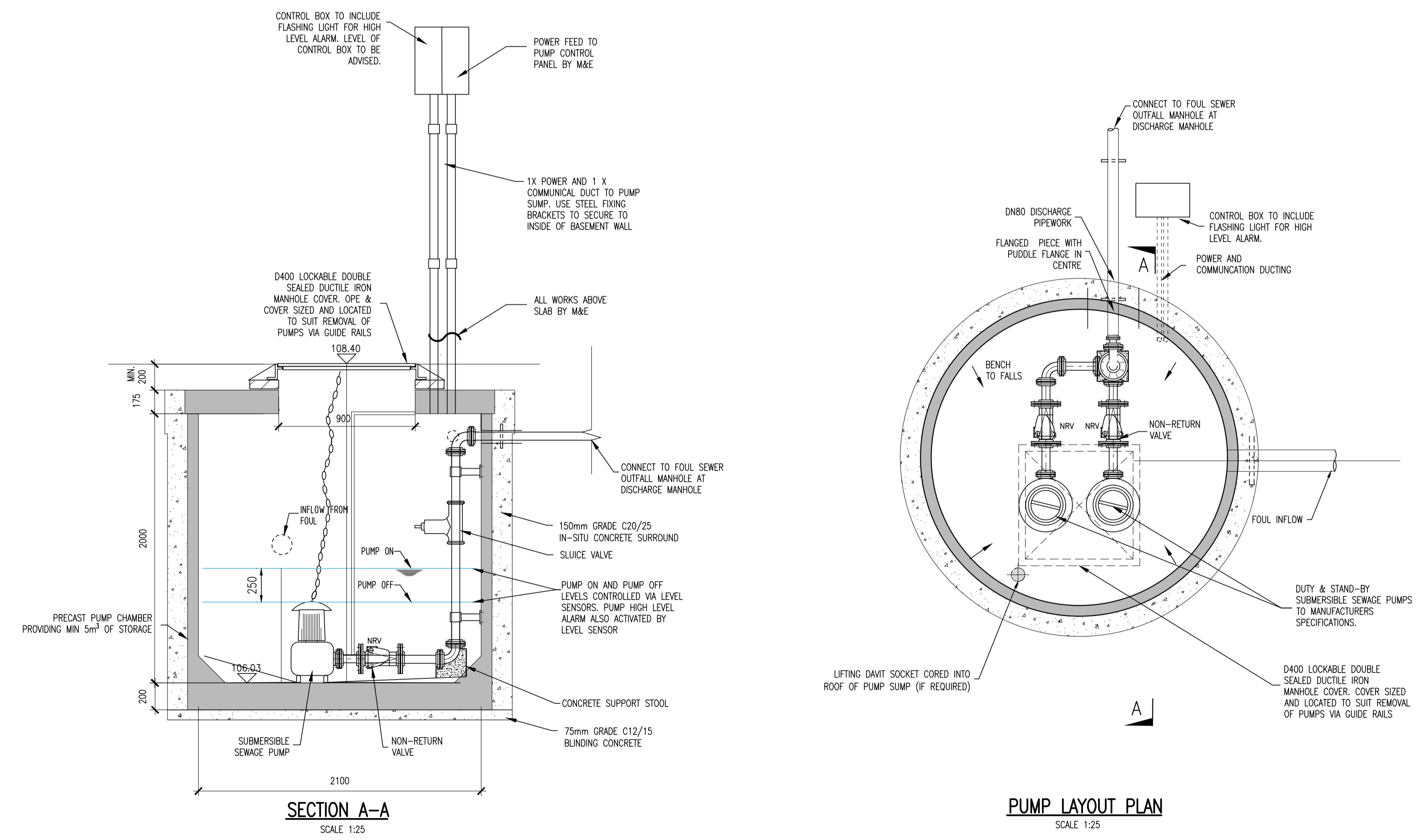
DBFL Consulting Engineers
 Dublin Office: Ormond House, Upper Ormond Quay, Dublin 7, Ireland. PHONE: +353 1 400 4000 FAX: +353 1 400 4050
 Waterford Office: Unit 2, The Chandlers, 1-2 O'Connell Street, Waterford, Ireland. PHONE: +353 51 309 500 FAX: +353 51 844 913
 Email: info@dbfl.ie Site: www.dbfl.ie

PROJECT
PROPOSED EXTERNAL VEHICLE WASH AT UNIT 2007/2008 ORCHARD AVE. CITY WEST

DRG. TITLE
CAR WASH PUMP DETAILS

ARCHITECT
EMD ARCHITECTS

SCALE AS SHOWN @A1 FILE REF. 210091-DBFL-CS-SP-DR-C-5310
 DRG. NO. 210091-DBFL-CS-SP-DR-C-5310 P02



NOTE: DRAWING SHOWS GENERAL PUMP STATION LAYOUT ONLY. CONTRACTOR TO PROVIDE DETAILED DRAWINGS AND CALCULATIONS FROM SUPPLIER FOR PUMP STATION AND ALL ASSOCIATED WORKS FOR APPROVAL IN ADVANCE OF CONSTRUCTION

PRELIMINARY PUMP DESIGN CRITERIA
 PUMPING RATE = 5 L/S
 PUMP STATIC HEAD = 2.6m
 RISING MAIN = 7m OF DN80 DUCTILE IRON
 EST DYNAMIC HEAD = 4m