



Planting Schedule

Abbrev.	Botanical Name	Gr/Pl/ Da. c	Height cm	Root Zone	Specification	Qty
Ap'C	Acer platanoides 'Columnar'	20-25	20-25	RB	3x; EHS; clear stem min. 200cm	25
Ap'D	Acer platanoides 'Drummondii'	20-25	20-25	RB	3x; EHS; clear stem min. 200cm	5
Ag	Alnus glutinosa	18-20	400-450	RB	3x; EHS; clear stem min. 200cm	3
Al	Araliacae 'lamarckii'	20-25	300-3500	RB	Multi-stem	8
Bpu	Betula pubescens	20-25	20-25	RB	3x; EHS; clear stem min. 200cm	17
Bu'J	Betula utilis 'lacustris'	20-25	400-450	RB	Multi-stem	16
Cc	Corylus colurna	20-25	20-25	RB	3x; EHS; clear stem min. 200cm	9
Cb'FF	Carpinus betulus 'Frans fontaine'	20-25	20-25	RB	3x; EHS; clear stem min. 200cm	12
Fa'DG	Fagus sylvatica 'Dawnyck's Gold'	18-20	350-450	RB	3x; EHS; feathered	2
Fa'PD	Fagus sylvatica 'Dawnyck's Purple'	18-20	350-450	RB	3x; EHS; clear stem min. 200cm	49
Ls	Liquidambar styraciflua	18-20	400-450	RB	3x; EHS; clear stem min. 200cm	27
P'C	Pyrus calleryana 'Chanticleer'	18-20	400-450	RB	3x; EHS; clear stem min. 200cm	36
Pr pa	Prunus padus	18-20	400-450	RB	3x; EHS; clear stem min. 200cm	9
Pr	Prunus sylvestris	18-20	150-200	RB	3x; EHS; clear stem min. 200cm	2
Total						219

Abbrev.	Name	Height cm	Root Type	Specification	No./m	Qty
Pr Lu	Prunus lusitanica 'Angustifolia'	80-100	RB	1+1; Transplant - seed raised, branched 3 brks, planted in a double staggered row @ 400mm centres.	3/m	3077
Cb	Carpinus betulus	90-120	BR	1+1; Transplant - seed raised, branched 3 brks, planted in a double staggered row @ 400mm centres.	5	260
Total						3337

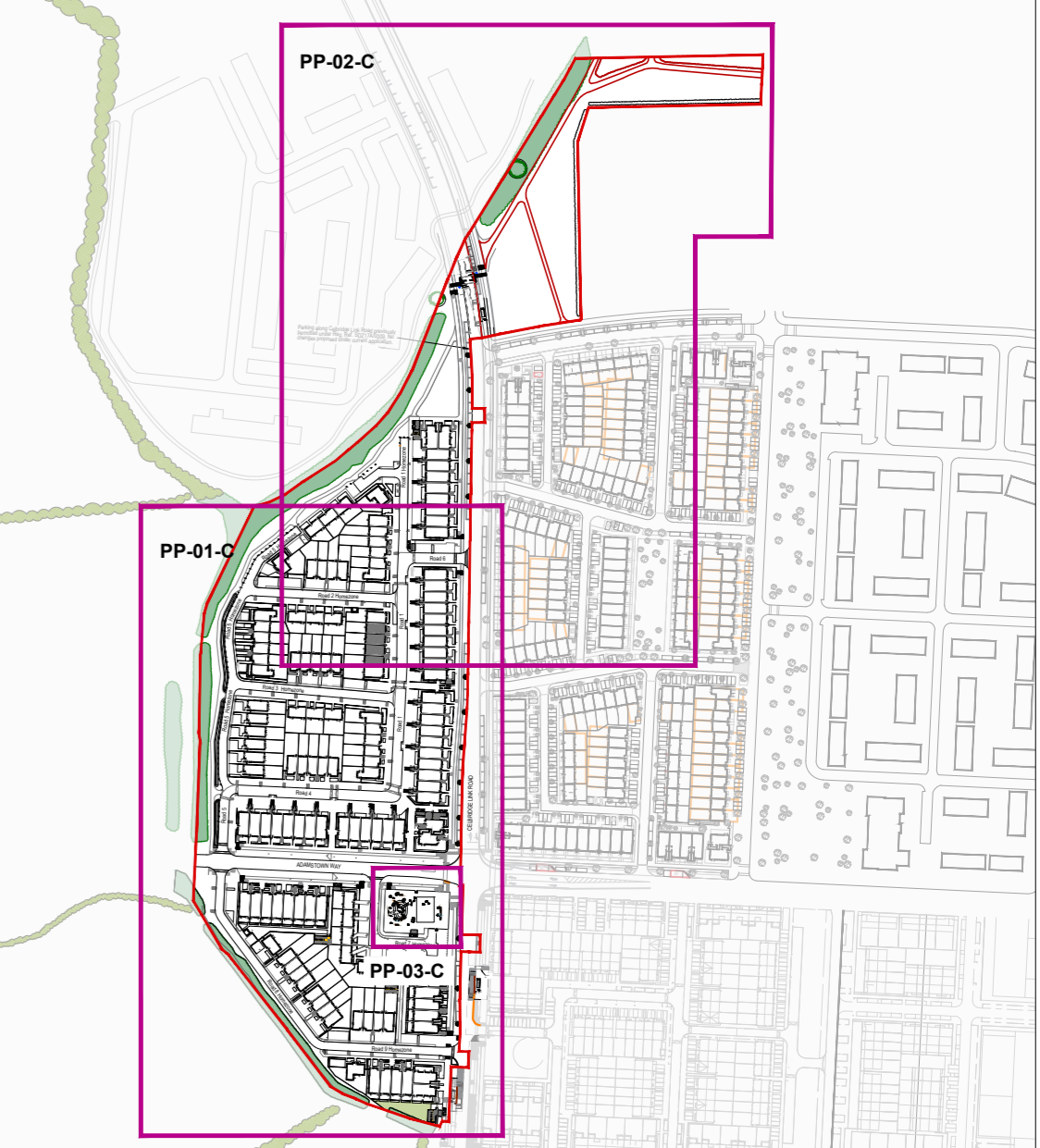
Abbrev.	Botanical Name	Gr/Pl/ Da. c	Height cm	Root Zone	Specification	No./m	Qty
AH'J	Anemone 'Honore Jobert'	2L	Full pot	2L	Full pot	3	228
Cf	Campanula trachelium repens	2L	Full pot	2L	Full pot	3	517
Co	Coreopsis 'Lucifer'	2L	Full pot	2L	Full pot	7	411
Ho	Helianthus orientalis	2L	Full pot	2L	Full pot	5	222
HLL'	Hydrangea 'Lime light'	2L	Full pot	2L	Full pot	3	478
R	Rachysandra terminalis	2L	Full pot	2L	Full pot	7	2991
PBS'	Pieris 'Blue Spire'	2L	Full pot	2L	Full pot	3	406
R'G'	Rudbeckia fulgida 'Goldsturm'	2L	Full pot	2L	Full pot	4	24
Sc	Sarcococca confusa	2L	Full pot	2L	Full pot	31/m	3497
TOTAL						8774	

Abbrev.	Botanical Name	Gr/Pl/ Da. c	Height cm	Root Zone	Specification	No./m	Qty
AH'PS'	Allium hollandicum 'Purple Sensation'	2L	Full pot	2L	Full pot	10	838
Le ae	Leucogramma aestivum	2L	Full pot	2L	Full pot	50	2215
TT	Tulipa 'Triumphator'	2L	Full pot	2L	Full pot	20	120
TOTAL						3174	

Abbrev.	Botanical Name	Height cm	Root Zone	No./m	Area 1	Qty
Alnus glutinosa	Alnus glutinosa	60-80	BR	6		48
Arbutus unedo	Arbutus unedo	60-80	BR	6		48
Malus sylvestris	Malus sylvestris	60-80	BR	6		48
Fagus sylvatica	Fagus sylvatica	60-80	BR	6		48
Vaccinium myrtillus	Vaccinium myrtillus	60-80	BR	6		48
Betula pubescens	Betula pubescens	60-80	BR	6		48
Betula pendula	Betula pendula	60-80	BR	6		48
Prunus sibirica	Prunus sibirica	60-80	BR	6		48
Rubus fruticosus	Rubus fruticosus	60-80	BR	6		48
Frangula alnus	Frangula alnus	60-80	BR	6		48
Prunus avium	Prunus avium	60-80	BR	6		48
Prunus padus	Prunus padus	60-80	BR	6		48
Prunus sylvestris	Prunus sylvestris	60-80	BR	6		48
Sorbus hibernica	Sorbus hibernica	60-80	BR	6		48
Eucryphia europaea	Eucryphia europaea	60-80	BR	6		48
Sambucus nigra	Sambucus nigra	60-80	BR	6		48
Ulex europaeus	Ulex europaeus	60-80	BR	6		48
Viburnum opulus	Viburnum opulus	60-80	BR	6		48
Crataegus monogyna	Crataegus monogyna	60-80	BR	6		48
Corylus avellana	Corylus avellana	60-80	BR	6		48
Ilex aquifolium	Ilex aquifolium	60-80	BR	6		48
Lonicera periclymenum	Lonicera periclymenum	60-80	BR	6		48
Hedera helix	Hedera helix	60-80	BR	6		48
Ligustrum vulgare	Ligustrum vulgare	60-80	BR	6		48
Rosa canina	Rosa canina	60-80	BR	6		48
Sorbus aucuparia	Sorbus aucuparia	60-80	BR	6		48
Sorbus aria	Sorbus aria	60-80	BR	6		48
Salix caprea	Salix caprea	60-80	BR	6		48
Salix cinerea	Salix cinerea	60-80	BR	6		48
Salix alba	Salix alba	60-80	BR	6		48
Viburnum europaeus	Viburnum europaeus	60-80	BR	6		48
TOTAL						1488

Grass
 Grass mix (45% Amentum Ryegrass, 40% Slender Creeping Red Fescue, 10% Chewings Fescue, 5% Highland Brown top turf); Application rate: 35g / m²

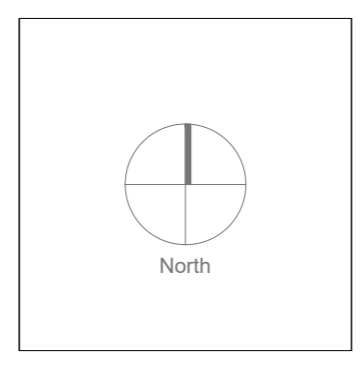
Key Plan



Legend

- Site Boundary
- Existing vegetation to be retained
- Street streets - Bio retention tree pits; See LD-01-C and LD-04-C for details.
- Proposed open space tree planting.
- Street trees to Celbridge link road as per SDZ 17A/0009.
- Street trees in raised planters.
- Proposed native woodland planting areas within public open space, positioned within 450mm clean topsoil (imported if necessary) to areas shown; see drawings LP-01-C for species information.
- Proposed Miyawaki planting area refer to LD-07-C for further information.
- Proposed native hedgerow to areas shown; to be planted at 5/linear metre (double staggered row with temporary post and wire fencing; see LD-03-C D02 for details).
- Proposed ornamental shrub planting within private ownership, positioned within 450mm clean topsoil (imported if necessary) to areas shown.
- Proposed grass areas: grass seed sown on 150mm clean topsoil (imported if necessary), over 200mm subsoil, all subsoil to be punctured and consolidated to aid natural drainage; (to receive the following amenity seed mix):
 50% Dwarf ryegrass
 45% Strong creeping red fescue
 5% Chewings fescue

Rev.	Date	Note
00	0000-00-00	00



General Notes

Doyle & O'Troithigh Landscape Architecture

Project Name: Adamstown Aderigg Phase 3
 Drawing Name: Planting Plan 01 (1 of 3)

Status: Compliance
 Drawing No: PP-01-C
 Project No: 17-064
 Revision No: 00
 Scale: 1:500
 Date: 13/08/2023
 Drawn By: AD
 Checked By: DOT

Linda Doyle
 Director
 +353 (0)1 267 4196
 linda@doyle-otroithigh.com

Daithí O'Troithigh
 Director
 +353 (0)1 267 4196
 daithi@doyle-otroithigh.com

Office Address
 28-29 Upper Peetoberg St
 Dublin 2

Contact
 +353 (0)1 658 7782