

LEGEND

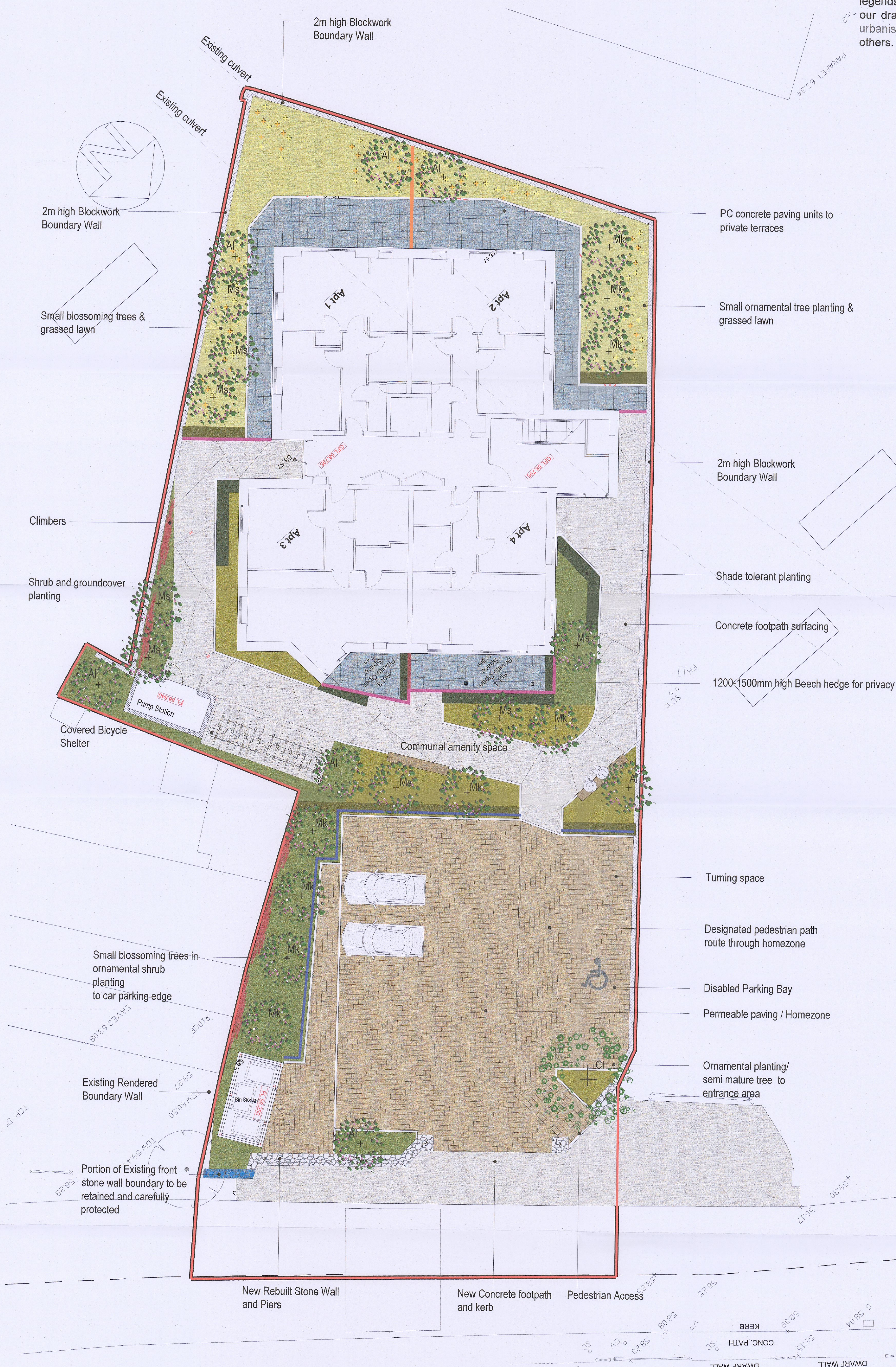
- Proposed concrete footpath surfacing**
Please refer to Architect's Drawings for details.
- Permeable Paving**
Please refer to Architect's Drawings for details.
- Terrace paving**
PC concrete flag paver 400x400mm
Please refer to Architect's Drawings for details.
- Concrete**
to engineers detail & specification.
- Beech Seating**
Mats by minicla or similar approved.
- Fence Type A (1500mm)**
Timber Screen. Please refer to Architect's Drawings for details:
Detail Drawing D-707 and Proposed Site Plan P-02A.
- Fence Type B (1800mm)**
Concrete Post & Timber Panel. Please refer to Architect's Drawings for details:
Detail Drawing D-707 and Proposed Site Plan P-02A.
- Fence Type C1**
Bow Top Railing 600mm height p.
- Fence Type C2**
Bow Top Railing 1800mm height panel and.
Please refer to Architect's Drawings for details: Detail Drawing
D-707 and Proposed Site Plan P-02A.
- Fence Type D**
Knee Rail Fencing. Please refer to Architect's Drawings for details:
Detail Drawing D-707 and Proposed Site Plan P-02A.

- Proposed Semi-Mature Trees**
Cl *Crataegus laevigata 'Paul Scordil'*, 18-20cmg, 4 x tr., wrb, 3.5-4.0m h.
- Proposed Small Flowering Trees**
Ms *Malus sylvestris*, multi-stem, min. 5 breaks, 3 x tr., wrb, 2.0-2.5m h., 1.5 s.
Mk *Magnolia kobus*, feathered, 3 x tr., wrb, 2.0-2.5m h., 1.5m s.
Al *Amelanchier lamarckii*, multi-stem, min. 5 breaks, 3 x tr., wrb, 2.0-2.5m h., 1.5m s.

- Mixed Herbaceous Planting - Sun Mix:**
Echinops bannaticus
Lavandula angustifolia
Phenacolanthus alpestris
Salvia x sylvestris
Schizanthus litoralis
Silphium laciniatum
All 2tr. cg, planted at 300-450mm centres
Bulb Underplanting
Allium species, *Fritillaria meleagris*, *Narcissus Thalia*
- Mixed Herbaceous Planting - Shade Tolerant Mix:**
Anemone x hybrida c. vars
Campanula persicifolia
Helictotrichon sempervirens
Anemone pulsatilla
Luzula nivea
Polystichum setiferum
All 2tr. cg, planted at 300-500mm centres
Bulb Underplanting
Crocus, *Galanthus*, *Hyacinthoides non-scripta*

- Climbers:**
Lonicera periclymenum
All 5tr. cg, planted at 300-500mm centres
- Native Hedging:**
Crataegus monogyna, *Ilex aquifolium*, *Prunus spinosa*
feathered, 900-1200mm h. min. 1.5m, planted at 500mm centres in double staggered row.
- Clipped Evergreen Hedging**
Ilex cornata / *Ilex 'Blue Princess'* 0.8-1.0m h. rb, planted single line 500mm centres.
- Tall Lawn**
Grass Seeding - Coburns Irish Premier Low Maintenance Mixture, or equivalent. Mown only after lawn bulb flowering period.
- Lawn Bulbs:**
Narcissus Tete a Tete'
Crocus cve.
Tulipa 'Early Harvest'
Tulipa 'White Trumper'
All as bulbs; Top Size

- Abbreviations:**
- str. number of transplants in nursery
 - h. height
 - s. spread
 - wrb wire root-balled
 - cmg girth of tree in centimeters measured 1m above ground
 - 2tr. cg plants supplied in 2 litre volume containers



This drawing is the copyright of ait urbanism + landscape. Unless otherwise stated all dimensions are in millimetres. Where dimensions are not given, drawings must not be scaled and the matter must be referred to the Landscape Architect. If the drawing includes conflicting details/dimensions the matter must be referred to the Landscape Architect. All dimensions must be checked on site. The Landscape Architect must be informed, by the Contractor, of any discrepancies before work proceeds.

NOTES:
Planning ref: SD22A-0412

| DATE | REV. | DESCRIPTION | DRAWN BY | CHECKED BY |
|------------|------|-----------------------------------|----------|------------|
| 04.09.2023 | P02 | ISSUED FOR ADDITIONAL INFORMATION | MF | PL |
| | | | | |
| | | | | |
| | | | | |

ait
urbanism + landscape

3rd Floor, Newmarket House
Newmarket Square
Dublin 5
Ireland
t + 353 98 1739 822
www.aitgroup.ie

ISSUE STATUS:
PLANNING

DRAWING NO: **16SD01_DR-200**

CLIENT: **Dublin Simon Community**

PROJECT: **Apartments at Old Nangor Road, Clondalkin, Dublin 22**

DRAWING: **Landscape Plan**

REVISION:
P02

DRAWN BY: MF

1st ISSUE: 14.09.2022

PROJECT NO: 16SD001

SCALE: 1:100

SHEET SIZE: A1

CHECKED BY: PL

NORTH