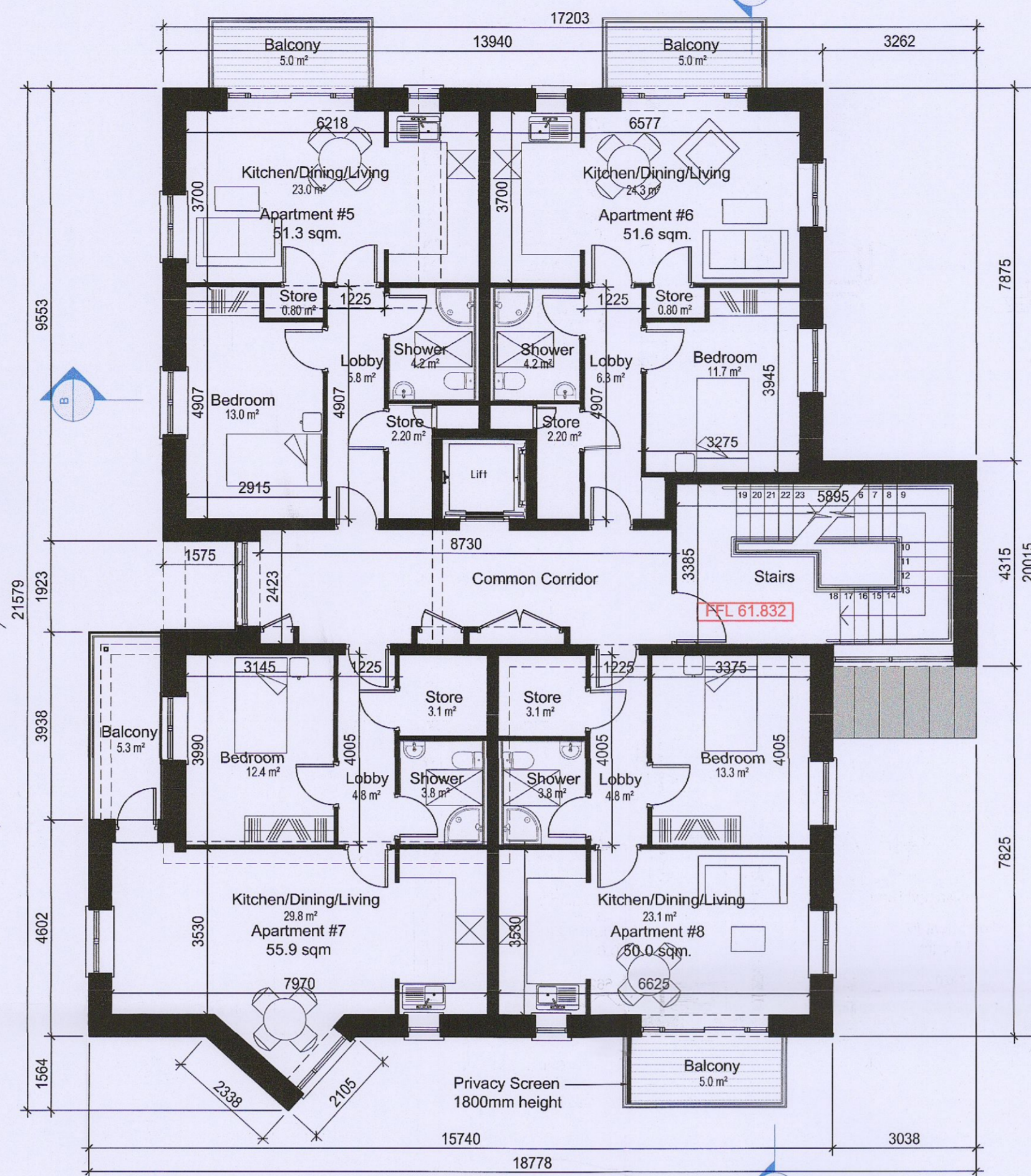


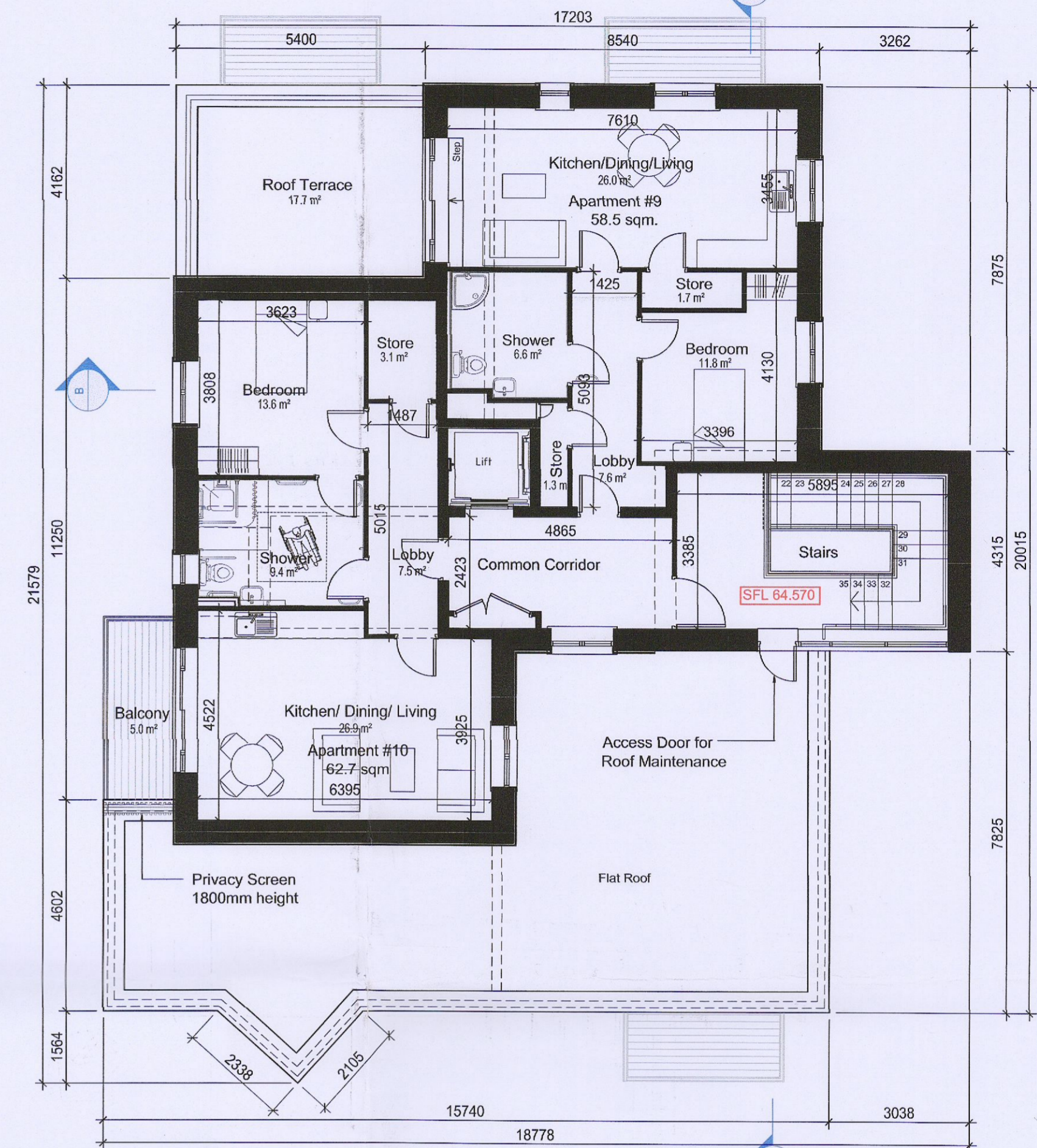
GROUND FLOOR PLAN

Scale 1:100



FIRST FLOOR PLAN

Scale 1:100



SECOND FLOOR PLAN

Scale 1:100

GROUND FLOOR PLAN					
One Bedroom Apartments	Minimum Guidelines *	Apartment #1	Apartment #2	Apartment #3	Apartment #4
Minimum Overall Apartment Floor Area	45.0 sqm	51.3 sqm	51.6 sqm	62.1 sqm	50.0 sqm
Aggregate Floor Areas for Living/Dining/Kitchen Rooms	23.0 sqm	23.0 sqm	24.3 sqm	29.7 sqm	23.4 sqm
Width of Living/Dining Room	3.3 m	3.7 m	3.7 m	3.5 m	3.5 m
Minimum Bedroom Areas	11.4 sqm	13.0 sqm	11.7 sqm	14.8 sqm	13.3 sqm
Minimum Bedroom Widths	2.8 m	2.9 m	3.3 m	3.8 m	3.4 m
Minimum Storage Space	3.0 sqm	3.0 sqm	3.0 sqm	3.2 sqm	3.1 sqm
Minimum Floor Area for Private Amenity Space	5.0 sqm	8.7 sqm	7.5 sqm	7.4 sqm	12.8 sqm

FIRST FLOOR PLAN					
One Bedroom Apartments	Minimum Guidelines *	Apartment #5	Apartment #6	Apartment #7	Apartment #8
Minimum Overall Apartment Floor Area	45.0 sqm	51.3 sqm	51.6 sqm	55.9 sqm	50.0 sqm
Aggregate Floor Areas for Living/Dining/Kitchen Rooms	23.0 sqm	23.0 sqm	24.3 sqm	29.8 sqm	23.1 sqm
Width of Living/Dining Room	3.3 m	3.7 m	3.7 m	3.5 m	3.5 m
Minimum Bedroom Areas	11.4 sqm	13.0 sqm	11.7 sqm	12.4 sqm	13.3 sqm
Minimum Bedroom Widths	2.8 m	2.9 m	3.3 m	3.1 m	3.4 m
Minimum Storage Space	3.0 sqm	3.0 sqm	3.0 sqm	3.1 sqm	3.1 sqm
Minimum Floor Area for Private Amenity Space	5.0 sqm	5.0 sqm	5.0 sqm	5.3 sqm	5.0 sqm

SECOND FLOOR PLAN			
One Bedroom Apartments	Minimum Guidelines *	Apartment #9	Apartment #10
Minimum Overall Apartment Floor Area	45.0 sqm	58.5 sqm	62.7 sqm
Aggregate Floor Areas for Living/Dining/Kitchen Rooms	23.0 sqm	26.0 sqm	26.9 sqm
Width of Living/Dining Room	3.3 m	3.4 m	3.9 m
Minimum Bedroom Areas	11.4 sqm	11.8 sqm	13.6 sqm
Minimum Bedroom Widths	2.8 m	3.4 m	3.6 m
Minimum Storage Space	3.0 sqm	3.0 sqm	3.1 sqm
Minimum Floor Area for Private Amenity Space	5.0 sqm	17.7 sqm	5.0 sqm

FLOOR AREAS:

Ground Floor: 270.5 sqm  
 First Floor: 264.3 sqm  
 Second Floor: 161.5 sqm

TOTAL: 696.3 sqm

REVISIONS AFTER LAST PLOT:	REVISIONS AFTER LAST PLOT:

Stage:  
PLANNING

REVISIONS AFTER LAST PLOT:
08.09.23 Rev 03: As clouded in red. Issued for Further Information.

	PROJECT: Dublin Simon Community Apartments @ Old Nangor Rd Clondalkin, Dublin 22	DATE: AUG 22	SCALE: 1:100@A1
	DRAWING: Proposed Floor Plans General Arrangement	DRAWN: OM	JOB NO.: 17016
	ARCHITECTS & PROJECT MANAGERS	K:\17016\	DWG. NO.: P-003
Copyright © 2003 Walsh Associates All Rights Reserved.		Merchants House, 27-30 Merchants Quay, Dublin 8. Tel: (01) 633 4261. Fax: (01) 633 4265. Email: info@walshassociates.ie	Revision: 03