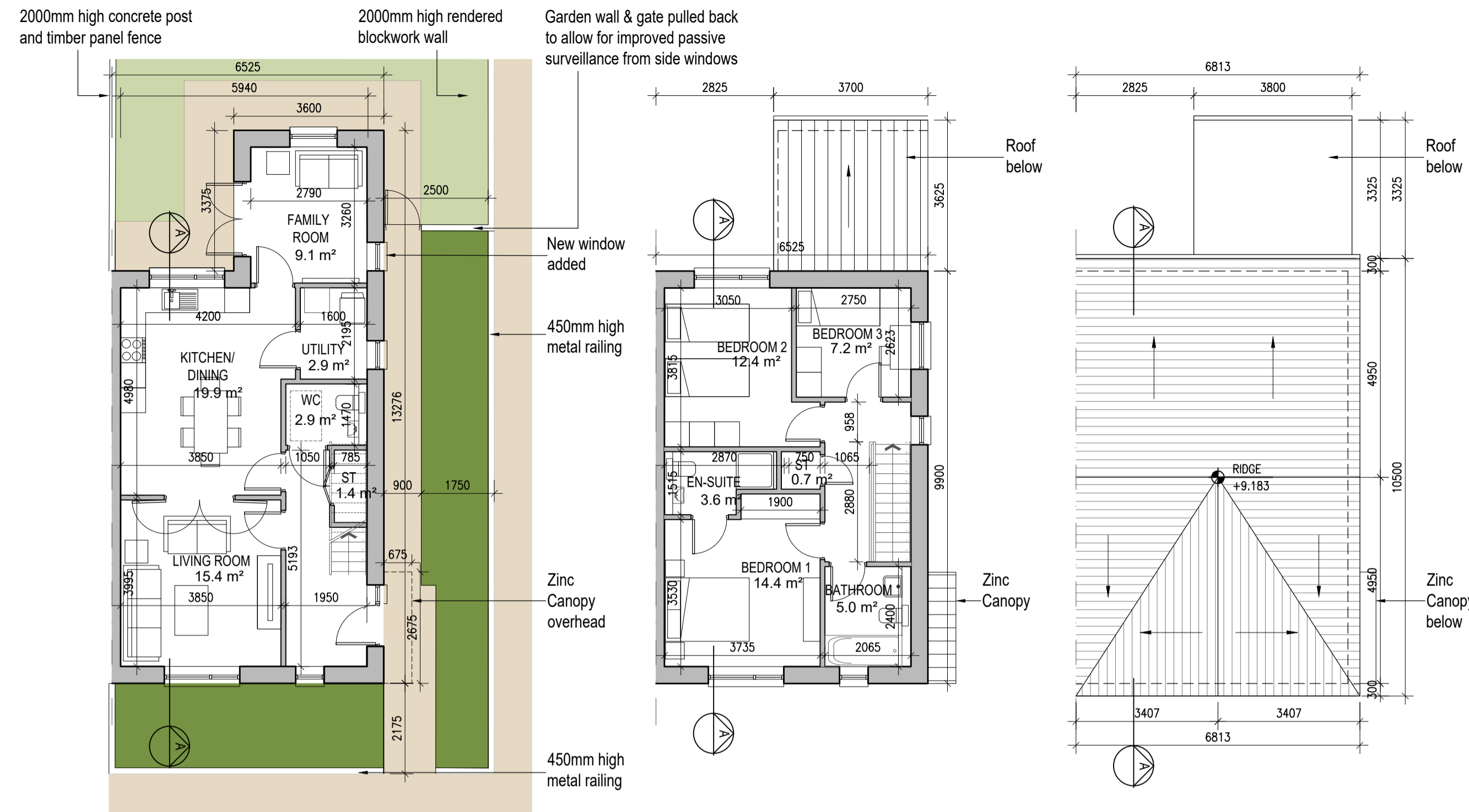


HOUSE TYPE A2



KEY PLAN [NTS]

HOUSE TYPES	No. OF UNITS
Type A1/A2	- 3 bed 15
Type B1/B2	- 3 bed 28
Type C1/C2/C3/C4	- 3 bed 16
Type D	- 4 bed 3
Type E1/E2	- 4 bed 7
Type K1/K2/K3	- 4 bed 6
	75

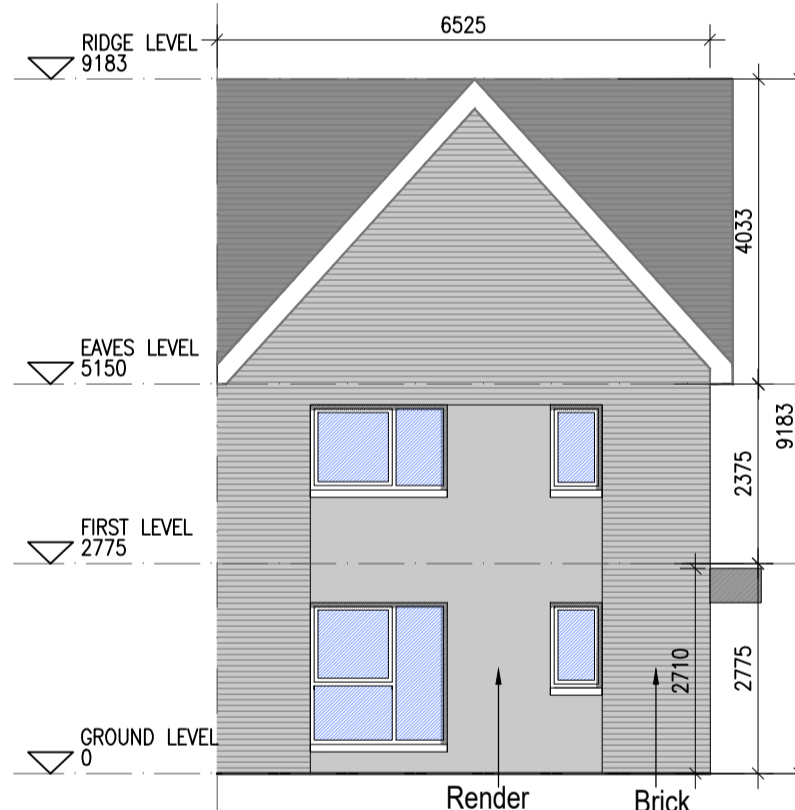
DUPLEX	No. OF UNITS
Type F1	- 2 bed 3
Type F2	- 2 bed 1
Type F3	- 2 bed 6
Type G1	- 2 bed 33
Type G2	- 2 bed 2
Type G3	- 2 bed 7
Type H1/H2	- 3 bed 2
Type J1	- 2 bed 9
Type J2	- 2 bed 3
	132
TOTAL NO. OF UNITS	207

Parking layout varies. Refer to 6259A-P-003 & 6259A-P-010/011 for information

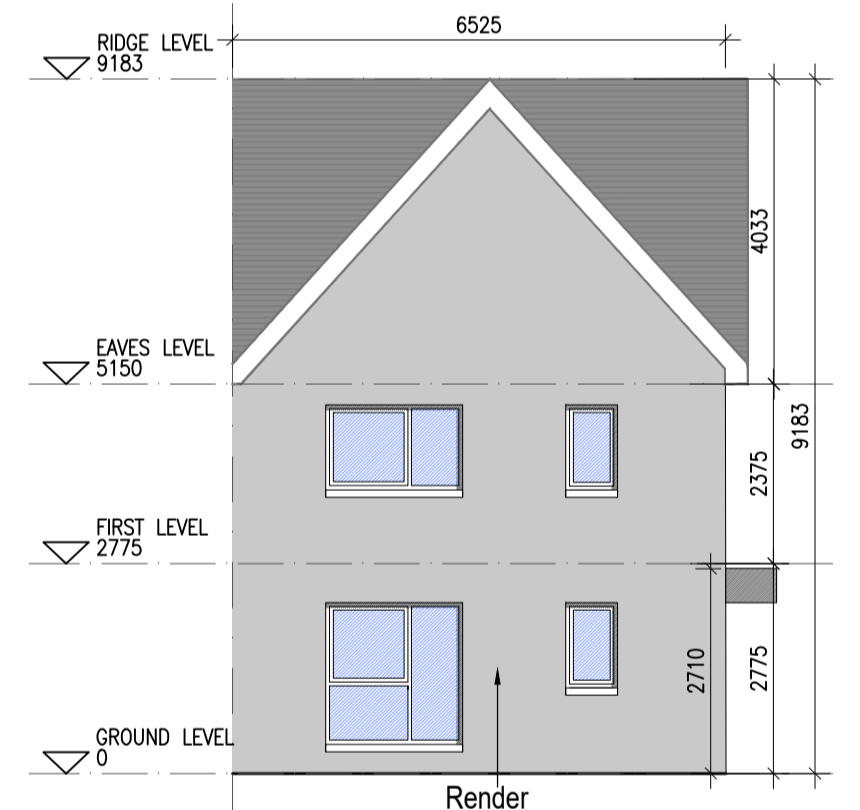
01 Ground Floor Plan

02 First Floor Plan

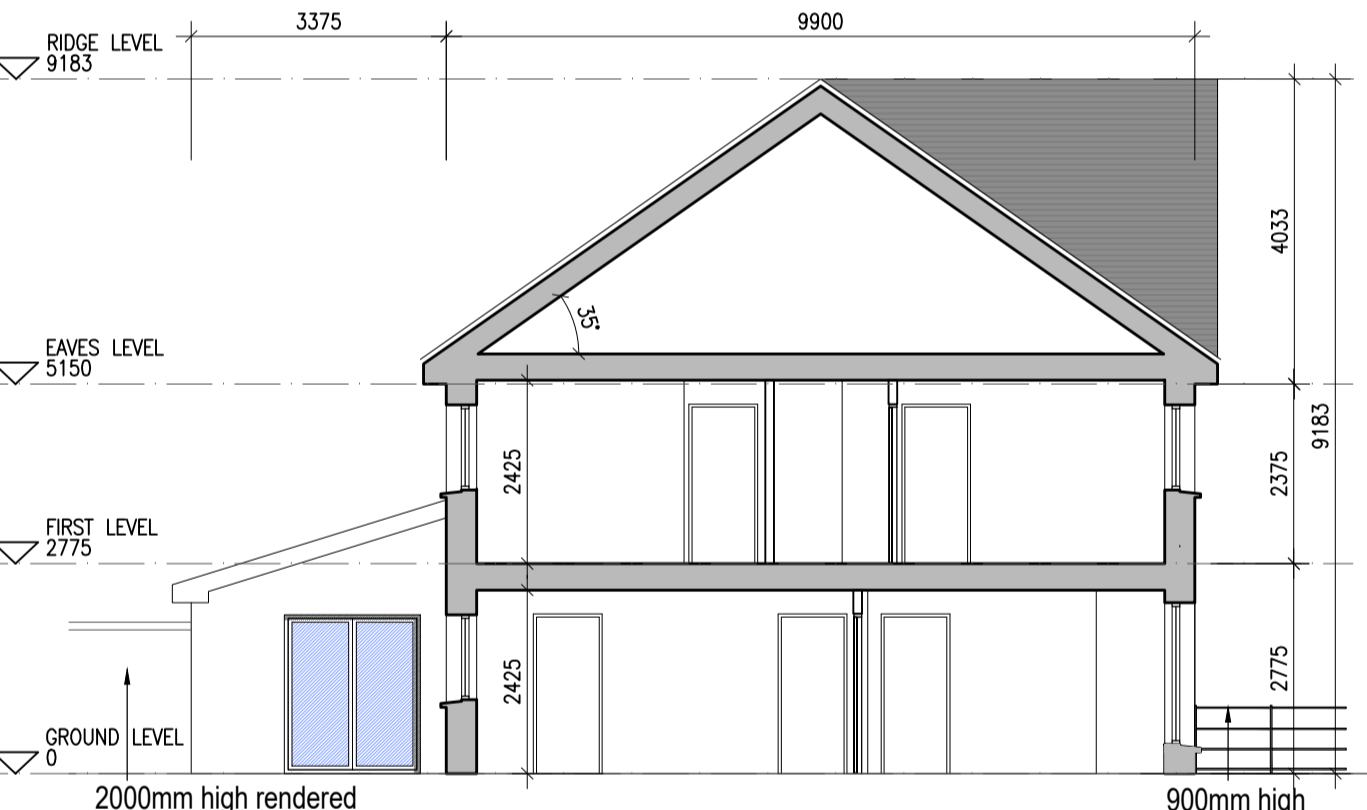
03 Roof Floor Plan
1:100@A1



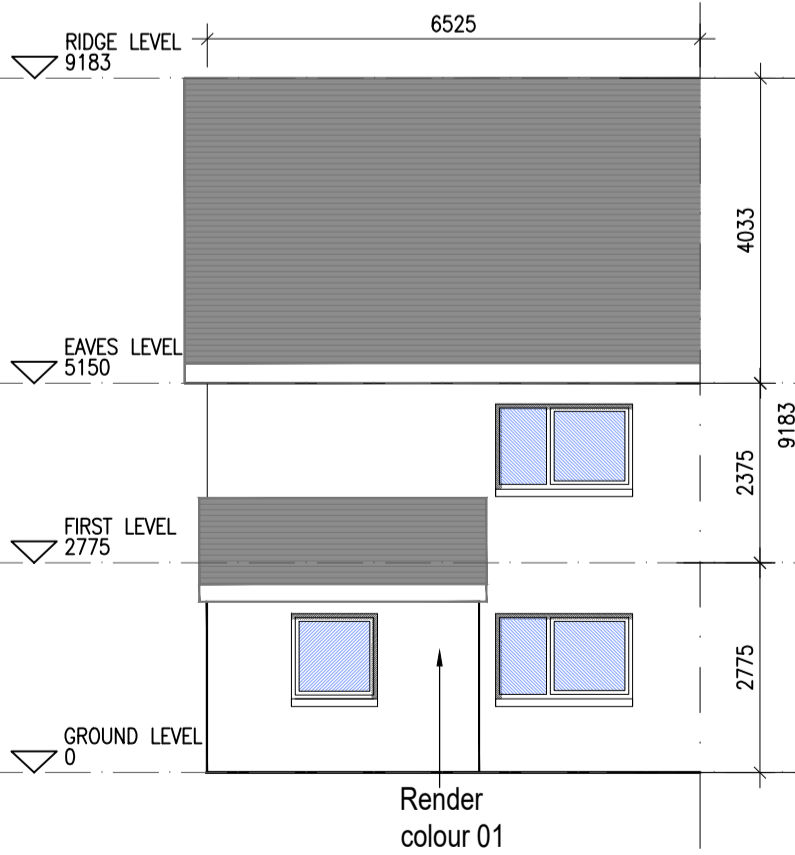
04 Front Elevation A2.1
1:100@A1



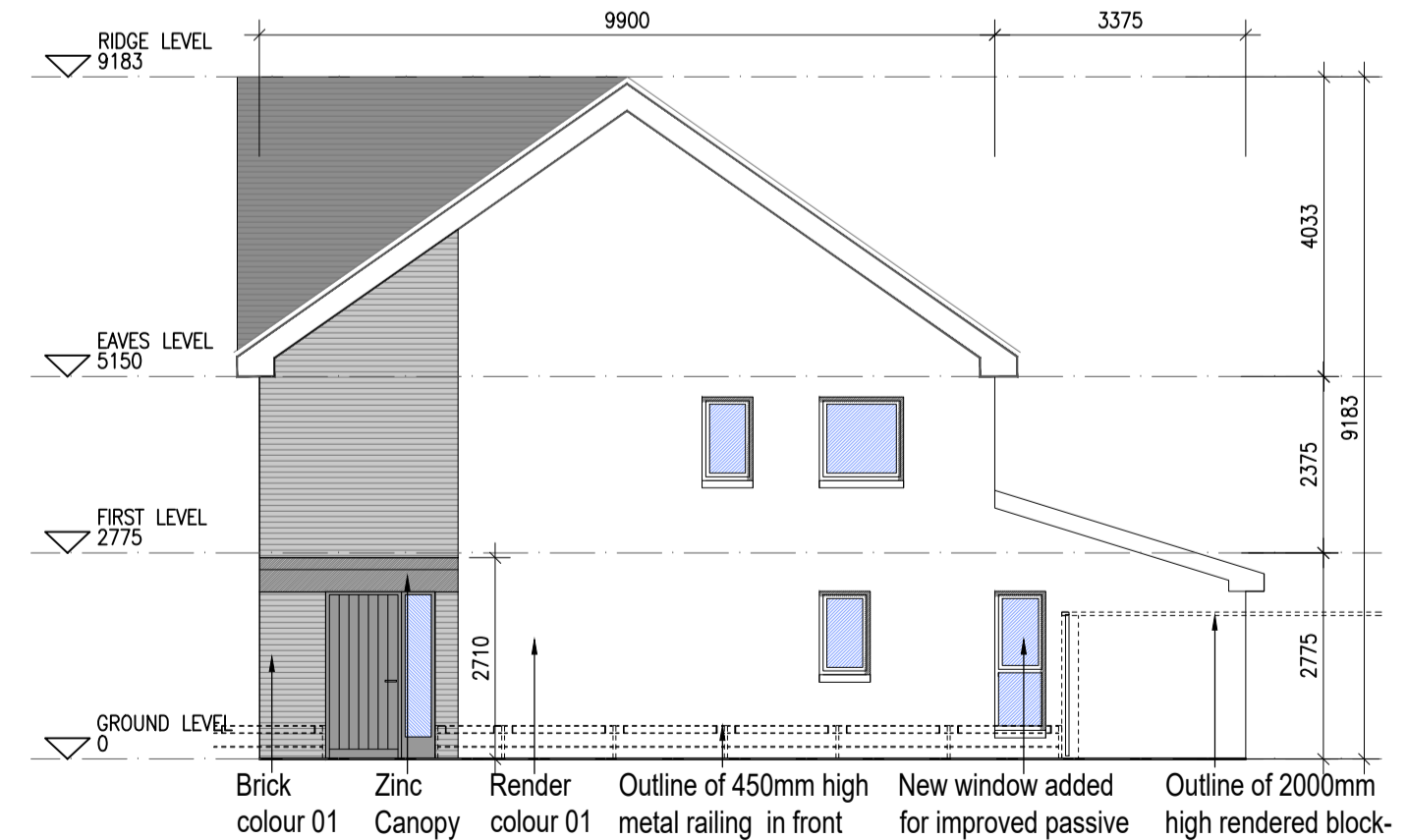
05 Front Elevation A2.2
1:100@A1



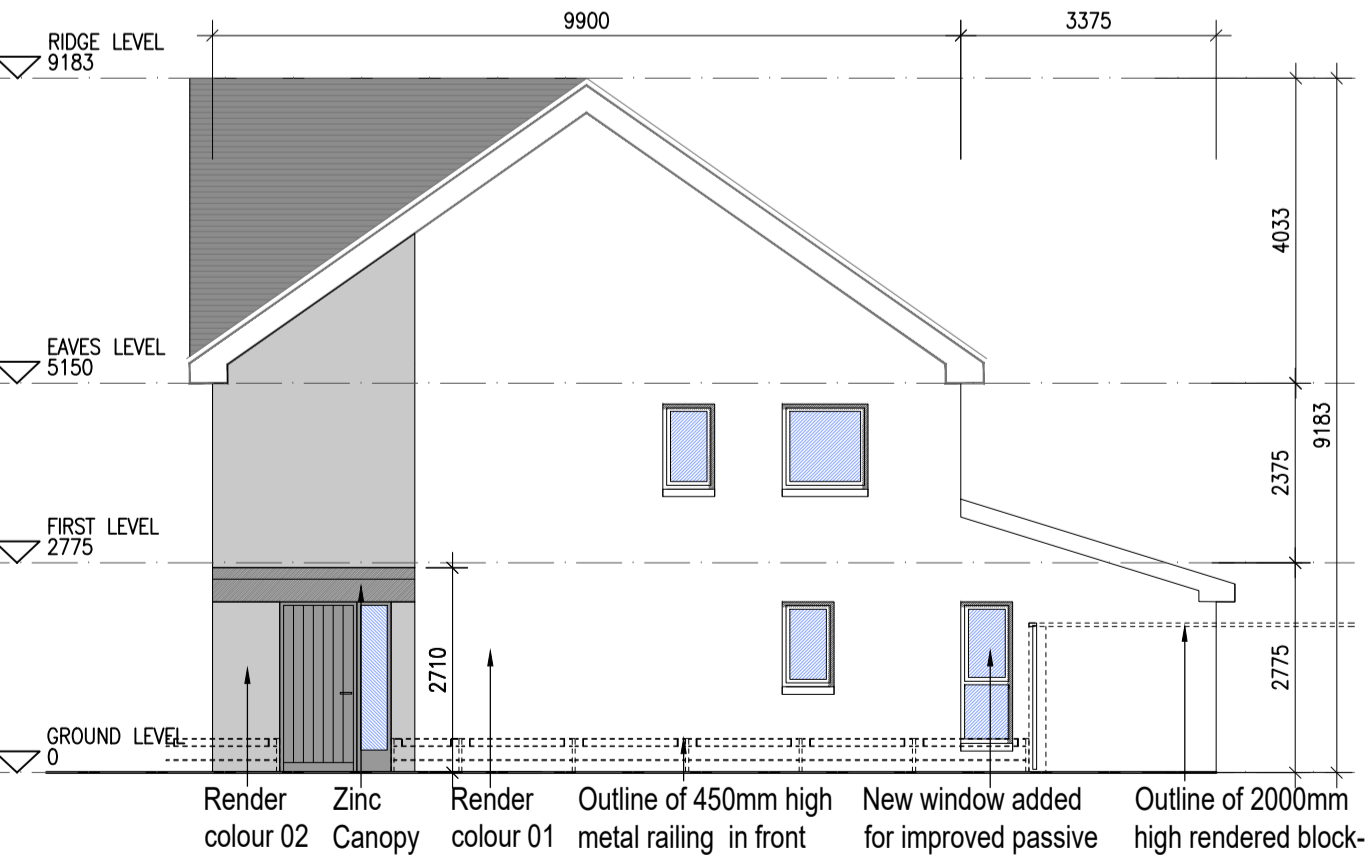
06 Section A-A
1:100@A1



07 Rear Elevation
1:100@A1



08 Side Elevation A2.1
1:100@A1



09 Side Elevation A2.2
1:100@A1

- EXTERNAL FINISHES**
- WALLS:** PAINTED SAND / CEMENT RENDER OR PROPRIETARY PRECOLOURED RENDER FINISH SELECTED BRICKWORK WHERE INDICATED ON DRAWINGS
 - WINDOWS:** SELECTED PROPRIETARY DOUBLE / TRIPLE GLAZED WINDOW SYSTEM WITH FRAMES TO APPROVED COLOUR OBSCURED GLAZING TO BATHROOMS AND EN-SUITES.
 - DOORS:** SELECTED PROPRIETARY DOORS AND GLAZED SIDE SCREENS TO APPROVED COLOUR.
 - RAINWATER GOODS:** uPVC OR POWDER COATED METAL GUTTERS AND RAINWATER PIPES TO SELECTED COLOUR.
 - MAIN ROOF:** CONCRETE ROOF TILES IN SELECTED COLOUR.
 - LOW LEVEL PROJECTION:** ZINC CANOPY TO ENTRANCE OF UNITS
 - OTHER ITEMS:** uPVC OR POWDER COATED METAL FASCIAS, SOFFITS AND BARGE BOARDS PAINTED MILDSTEEL RAILINGS AND BALUSTRADES

HOUSE TYPE A2
Ground floor area 63.2m²
First floor area 53.8m²
Total Floor Area (3-bed unit): 116.9m²

REFER TO LANDSCAPE ARCHITECT'S DRAWINGS FOR ALL LANDSCAPING DETAILS INCLUDING BOUNDARY TREATMENTS

HOUSE TYPE A2

Notes	Issue Status
1. Copyright Reserved	
2. Work to signed dimensions only. Do not scale drawings	
3. The contractor is responsible for checking all levels and dimensions on site and shall refer all discrepancies to the Architect	
4. Where appropriate, for details of r.c. structure, or mechanical and electrical details, see Engineers drawings	
5. Proprietary items shall be fixed in strict accordance with manufacturers instructions.	
6. Sizes of proprietary items shall be checked with manufacturer.	
7. The contractor shall be responsible for the coordination of structure, finishes and services.	

Progress	Revision	Date	Initials
01	ISSUED FOR PLANNING	14.10.2022	JN
02	ISSUED FOR PLANNING RFI	20.03.2023	ED
03	ISSUED FOR COMPLIANCE	09.05.2023	RC

Project	Aderrig Phase 3 Adamstown SDZ Residential Development
Drawing Title	House Type A2 (end terrace) Non-handed-Plans, Elevation, Section
Drawing No	6259A-P-102-C2(f)
Scale	1:100@A1
Rev	02
Drawn	IFJ, ED
Date	MAR 2023

6-7 HARDCOURT TERRACE, DUBLIN 2, IRELAND
t: +353-1-878-2400 f: +353-1-878-7395
www.bkd.ie

bkd architects
BURKE-KENNEDY DOYLE