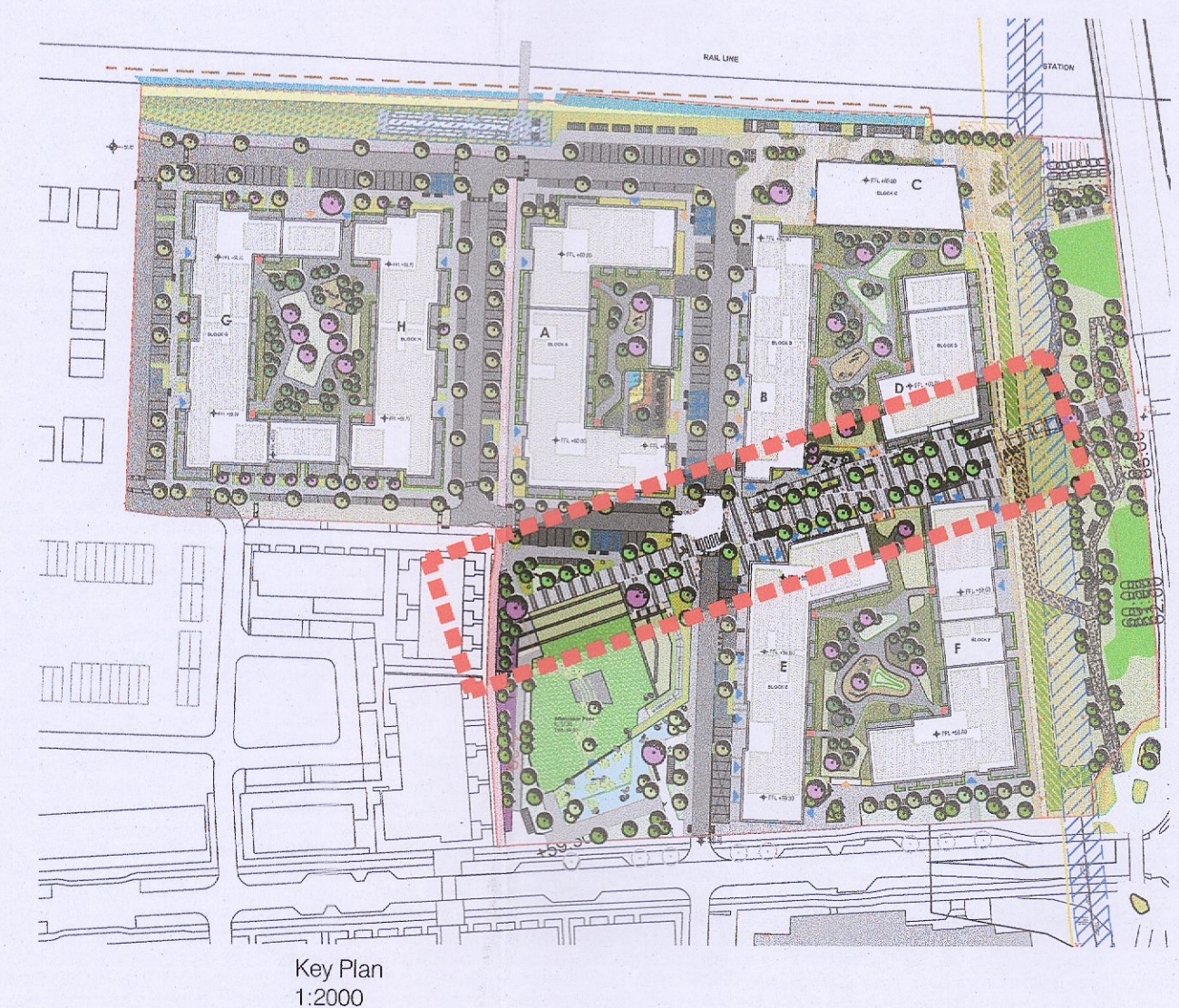


- LEGEND**
- Red Boundary Line
  - SOFT LANDSCAPE**
    - Existing Planting
    - Existing Vegetation to Canal boundary and Forthill Rd to be retained and enhanced;
    - Open Space Trees
      - 14-15cm girth
      - To include the following indicative species: *Acer campestre*, *Alnus glutinosa*, *Betula pendula*, *Fagus sylvatica*, *Fraxinus excelsior*, *Prunus avium*, *Prunus padus*, *Quercus robur*, *Sorbus aria*, *Sorbus aucuparia*, *Corylus avellana*, *Castanea sativa*, *Juglans nigra*.
      - Bare-Root: *Alnus glutinosa*, *Betula pendula*, *Betula pubescens*, *Crataegus monogyna*, *Malus sylvestris*, *Quercus robur*, *Prunus avium*, *Acer campestre*, *Prunus spinosa*, *Salix* spp., *Prunus padus*, *Corylus avellana*, *Pinus sylvestris*.
    - Link Street/Structural Trees
      - 20-25cm girth
      - To include following indicative species: *Tilia cordata* 'Greenspire', *Platanus orientalis* 'Minaret'
    - Local Street Trees
      - 16-18cm girth
      - Alnus glutinosa*, *Betula pubescens*, *Carpinus betulus*, *Acer campestre* 'Elegant'
    - Podium Garden Trees
      - 8-10 cm girth
      - To include the following indicative species: *Betula pendula*, *Prunus avium*, *Malus Everest*
    - Specimen Ornamental Tree
      - 20-25 cm girth
      - To include the following indicative species: *Malus Everest*, *Liriodendron tulipifera*, *Prunus serotina*, *Magnolia kobus*, *Sorbus Joseph Rock*, *Crataegus Pauli's Scarlet*, *Ameiobanier lamackii*, *Betula utilis* 'Jaspemontii', *Liquidambar styraciflua*
    - Extent of structural soil
      - Tree pits for SuDS and/or Rooting volume
    - Proposed Planting**
      - Native Woodland Planting
        - B/R 60-120cm (90%) & 8-10cm girth (10%), @ 1 per m<sup>2</sup>
        - To include the following species: *Alnus glutinosa*, *Betula pendula*, *Betula pubescens*, *Crataegus monogyna*, *Malus sylvestris*, *Quercus robur*, *Prunus avium*, *Acer campestre*, *Prunus spinosa*, *Salix* spp., *Prunus padus*, *Corylus avellana*, *Pinus sylvestris*;
      - Street/Public Realm Planting
        - Container-Grown Shrubs 2tr min @ 5 per m<sup>2</sup>. To include the following: *Lavandula 'Hidcote'*, *Hydrangea* sp., *Sarcococca* sp., *Polystichum* sp., *Dryopteris* sp., *Erica* sp., *Luzula* sp., *Carex oshimensis* 'Evergold', *Hypericum 'Hidcote'*, *Mahonia aquifolium*, *Rosmarinus officinalis*, *Lonicera pileata*, *Vinca minor*, *Viburnum davidii*, *Hedera helix*, *Viburnum opulus*, *Ajuga reptans*, *Liriope muscari*, *Lonicera periclymenum*, *Molinia caerulea*, *Heilobatus niger*, *Heuchera maxima*, *Liberia formosa*;
      - Native Hedgerow Planting
        - Native planting on 450mm topsoil
        - To include the following indicative species: *Viburnum opulus*, *Euonymus europaeus*, *Cornus sanguinea*, *Lonicera periclymenum*, *Hedera helix*, *Crataegus monogyna*, *Prunus spinosa*, *Salix* spp.;

- HARD LANDSCAPE**
  - Asphalt Roadway
    - With in-situ concrete kerbs (to Engineer's specification);
  - HomeZone & Raised Table
    - Blacktop (to Engineer's layout and specification);
  - Car Parking Spaces
    - Permeable PC Concrete Block or similar and approved;
  - Public Footpaths
    - In-situ concrete, Brushed Finish, or Tarmac. (to Engineer's specification);
  - Cycleway
    - Colored Asphalt (to Engineer's layout and specification);
  - Private Footpaths/Seating Spaces - Apartments
    - PC Concrete Block or similar and approved;
  - Flag Paving or similar approved
    - Main Axis Street, two tones of gray (light/darker) or similar approved
  - Open Space Paving
    - PC Concrete Block or similar and approved;
  - Play Area Surface
    - Play Bark much suitable for play areas;
  - Reinforced Grass surfacing
    - to Fire Tender Route;
  - Self-binding Gravel
    - to seating spaces in open spaces
    - Buff colour, 10mm and down;
  - Composite Decking
    - Stage and Terraces
  - Hot Rolled Asphalt with white chippings (with painted crossing)
    - to Raised table
  - Tactile paving
    - Stepped & Ramped accesses; Pedestrian crossings; Disabled car parking
    - Refer to Engineer's package for specifications and build-up;
  - Selected paving
    - Unique to Landmark area
  - FURNITURE & BOUNDARIES**
    - Seating Walls/Raised Planters
      - to Courtyards (+450mm - 600mm)
      - Rendered Concrete Block with PC Concrete Coping, or similar and approved;
    - Corten steel Seating walls/Raised Planters/Edge
      - 60mm thick; various heights
    - Seating
      - Simple, robust street furniture with arm and backrests. Galvanized Steel frame / Composite Timber Seating or similar approved;
    - Outdoor Bicycle Stands
      - Standard Sheffield Bicycle Stands
    - Indicative Sculpture

- Play Natural Elements
  - to Playground areas;
- Illuminated Columns (Decorative)
- Lighting
  - Refer to Engineer's drawings
- Underground Bin System
  - Refer to Architects drawings
- Existing Pallisade Fence
  - to Rail Line, to be retained and repaired
- Courtyard Balustrade
  - (Refer to Architects drawings and specifications)
- Gravel Trim
- Attenuation Basin
  - Top & Bottom of proposed slope;
- GNI & Irish Water Wayleave
  - Note: Proposals in wayleaves are subject to final review and approval by the relevant utility.



**murray & associates**  
landscape architecture

16 The Seapoint Building, 44-45 Custom House Quay, Dublin 3, D03 RF93 | [mail@murray-associates.com](mailto:mail@murray-associates.com) | [www.murray-associates.com](http://www.murray-associates.com) | +353 (0)1 854 0090

E   12/07/23   RFI	IS	MB
D   02/12/22   Planning	CA	CA
C   17/11/22   Draft	JB/CA	CA
B   22/08/22   Planning	FT/IS/GA	MB
A   12/08/22   Draft	FT/IS/GA	MB
0   27/07/22   Sketch	IS	MB
REV/DATE	REVISION	DRAWN   CHECKED

CLIENT: Cairn Homes Properties Ltd.  
PROJECT TITLE: Clonburris Urban Core

SHEET TITLE: Masterplan - Main Axis

SHEET NO: 1868_PL_P_01.1	SHEET SIZE: A1
SCALE: 1:250	REVISION: E
STAGE: Planning RFI	DATE: 12/07/23

Copyright Murray & Associates, 2023