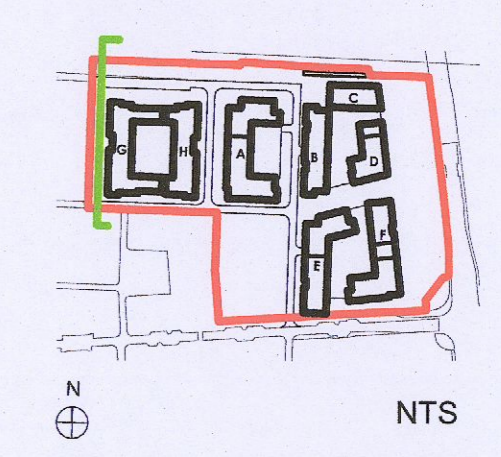
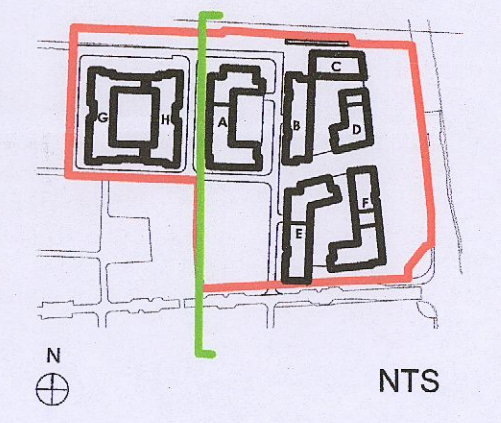
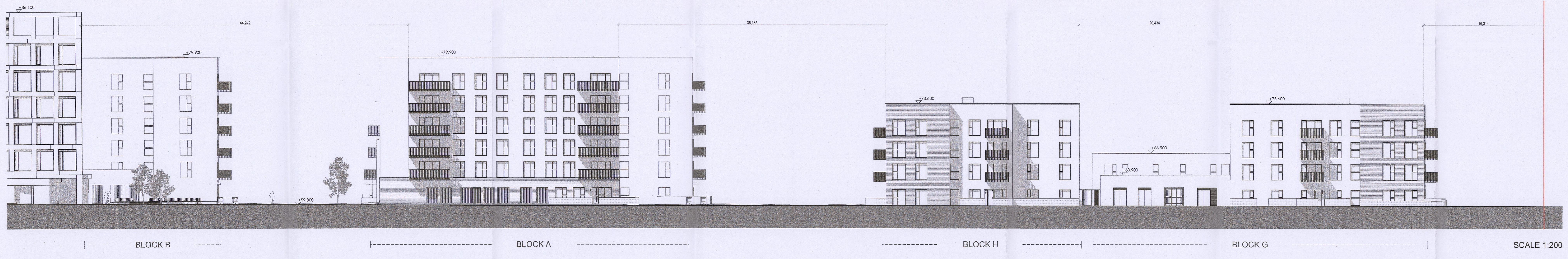
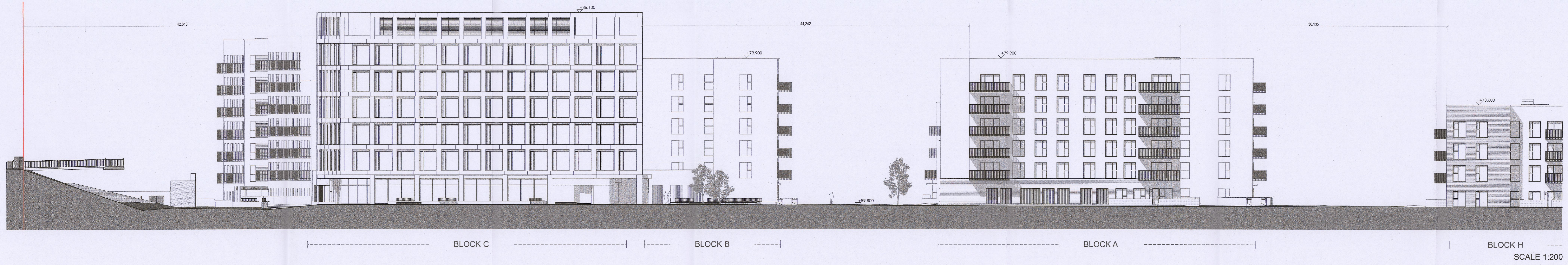
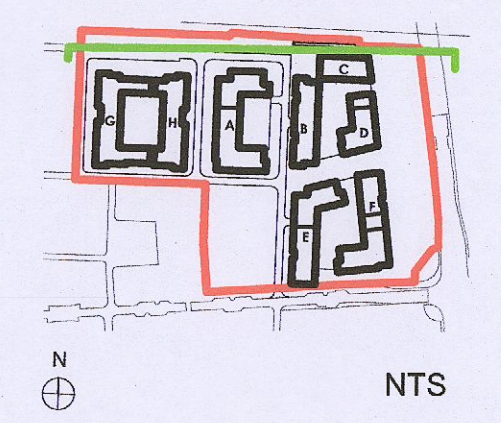


1. This drawing is the property of ALU Architects Ltd. It must not be copied or given to a third party without the approval of ALU Architects Ltd.
2. Work to be carried out in accordance with the drawing.
3. The contractor is responsible for checking all dimensions and levels on the site and shall refer all discrepancies to the Project Architect.
4. Drawings to be made in conjunction with all relevant engineers drawings. Mechanical and electrical, any structural or services information shown on the drawings is illustrative only.
5. The contractor shall be responsible for the coordination of all structural, services and finishes.
6. Proprietary items shall be fixed in strict accordance with manufacturers instructions.
7. This drawing shall only be used for the work stages detailed and no subsequent stages.



No.	Date	Description	Drawn By	Checked By