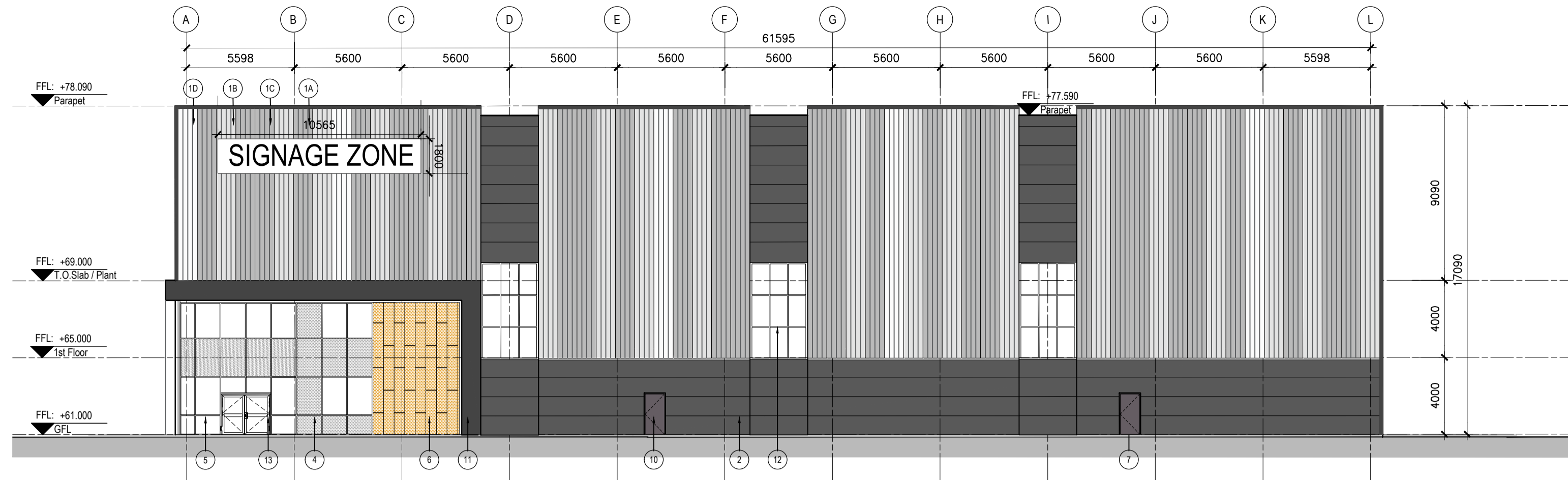


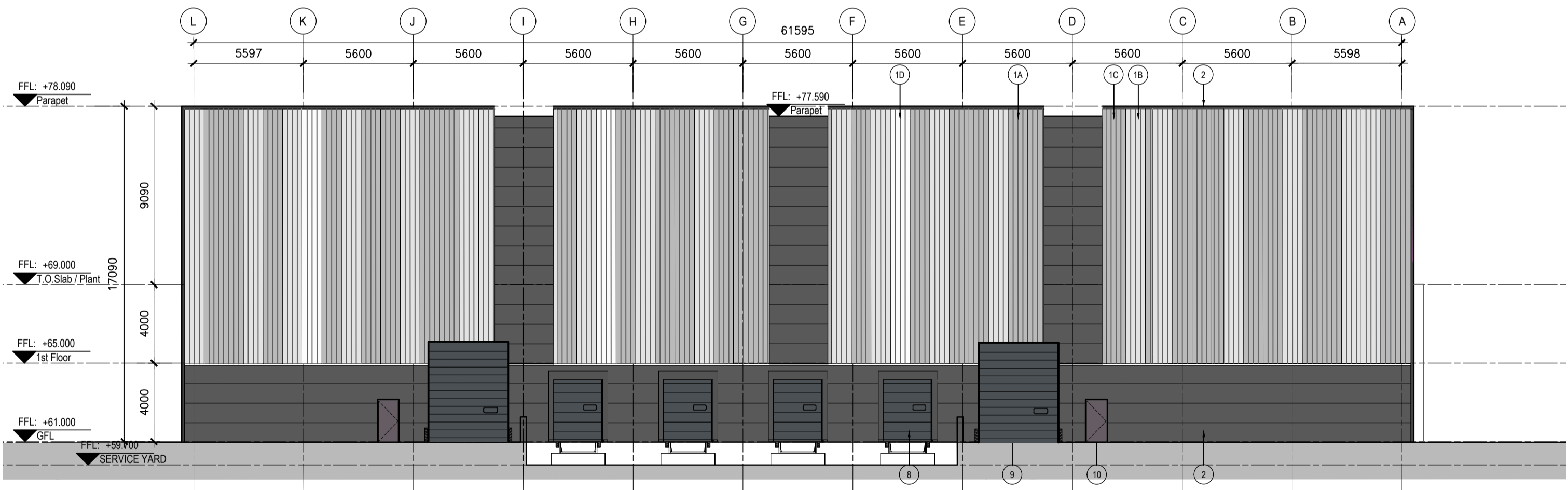
**1 SOUTH-EAST ELEVATION**  
 PA-454 UNIT 03 Scale: 1:200



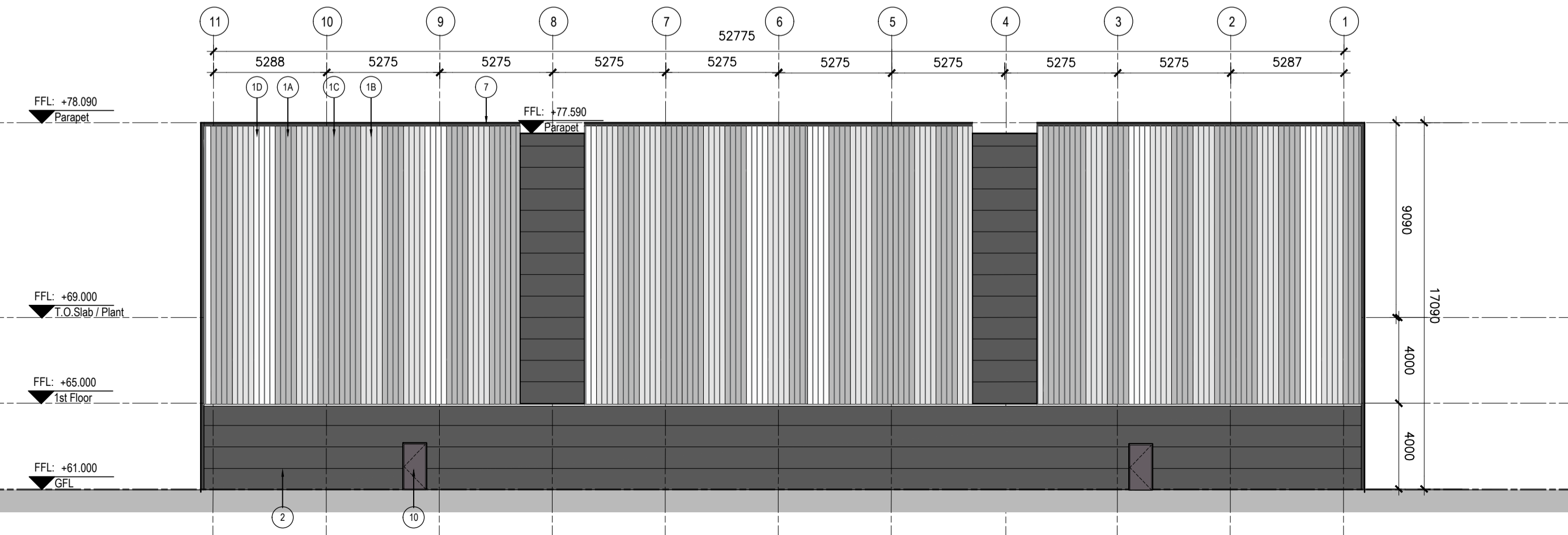
**2 SOUTH-WEST ELEVATION**  
 PA-454 UNIT 03 Scale: 1:200



**3 NORTH-WEST ELEVATION**  
 PA-454 UNIT 03 Scale: 1:200



**4 NORTH-EAST ELEVATION**  
 PA-454 UNIT 03 Scale: 1:200

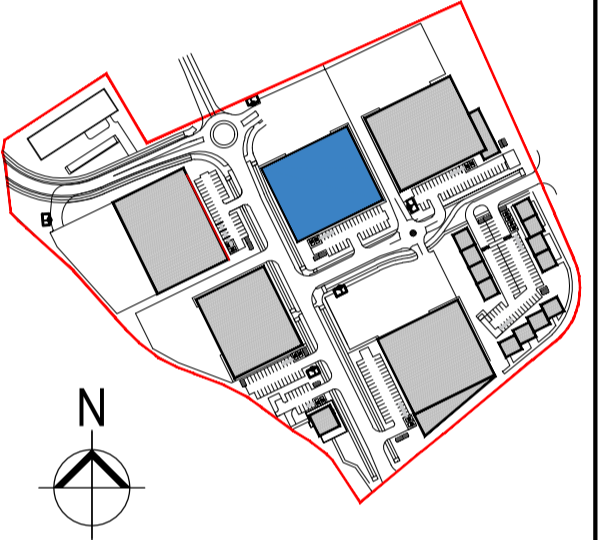


- NOTES:**
- 1A Quadcore KS 1000 RW - 91mm thick panel. Colour: Goosewing Grey
  - 1B Quadcore KS 1000 RW - 91mm thick panel. Colour: Grey White
  - 1C Quadcore KS 1000 RW - 91mm thick panel. Colour: Pure Grey
  - 1D Quadcore KS 1000 RW - 91mm thick panel. Colour: White XL Forte
  - 2 Quadcore AWP 1000 FL - 88mm thick panel. Colour: Anthracite
  - 3 Green wall panel - galv MS frame with St Sl. lattice to S.E.'s details with planting and irrigation system to Landscape Consultant requirements.
  - 4 Thermally broken and self-draining PPC aluminium double glazed curtain wall system with PPC aluminium spandrels and aluminium pressure caps. Colour: Anthracite.
  - 5 Thermally broken and self-draining PPC aluminium double glazed curtain wall system with glazed spandrels. Colour: Anthracite.
  - 6 Kingspan Di-Design rainscreen system with shadow gap panels on 100mm quadcore Karrier system. Colour - To be selected.
  - 7 PPC aluminium coping. Colour: Anthracite.
  - 8 PPC aluminium dock leveller door to match cladding.
  - 9 PPC aluminium grade level door to match cladding.
  - 10 Insulated PPC MS escape door to match cladding.
  - 11 Canopy. Colour: Anthracite to outer faces. Colour: Corten to inner reveals.
  - 12 High performance opaque light panel, frame colour anthracite.

**COPYRIGHT:**  
 The design and details shown on this drawing are applicable to their project only and may not be reproduced in whole or in part or be used for any other project or purpose without the written permission of TOT Architects with whom copyright resides.  
 DO NOT SCALE from this drawing. Use figured dimensions. Contractor to check all dimensions on site prior to commencement of works. Any discrepancies are to be referred to the ARCHITECT.

**KEY PLAN:**

**KEY SITE PLAN**



**REVISIONS**

DATE	REV.	BY	CHECKED	DESCRIPTION
02.05.2023	*	IK	NW	ISSUED FOR PLANNING COMPLIANCE

**TOT ARCHITECTS**

REGISTERED OFFICE: 4P Upper Mount Street, Dublin 2, Ireland. T: +353 1 703 7800, W: www.totarch.ie, E: info@totarch.ie

**PROJECT:**  
 WAREHOUSE/LOGISTICS, OFFICE & CAFÉ / RESTAURANT DEVELOPMENT  
 AT CALMOUNT ROAD, BALLYMOUNT, DUBLIN 12  
 STAGE:  
**PLANNING COMPLIANCE**

**DRAWING TITLE:**  
 UNIT 3  
 ELEVATIONS  
 PLANNING CONDITION 15

DATE: JULY 2022	DRAWING NO: PA-454
SCALE: 1:200 @ A1	REVISION:
DRAWN: IM	CHECKED: ND
CHECKED: ND	SHEET SIZE: A1
JOB NO: 18-42	FILE NAME: