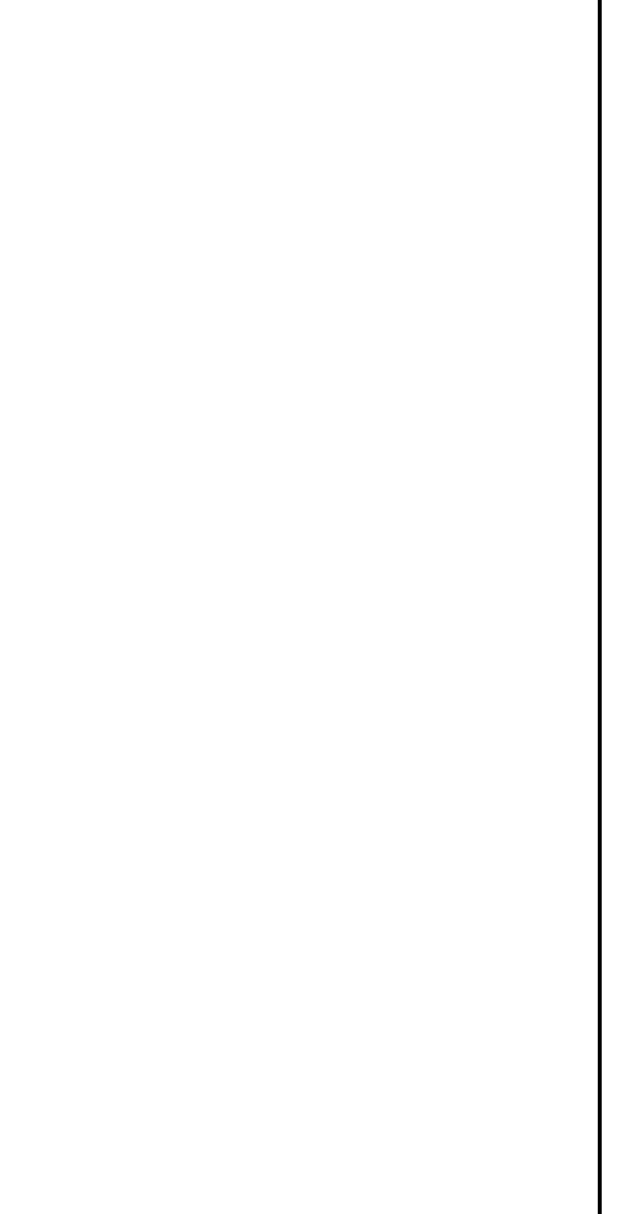


COPYRIGHT:
The design and details shown on this drawing are applicable to their project only and may not be reproduced in whole or in part or be used for any other project or purpose without the written permission of TOT Architects with whom copyright resides.
DO NOT SCALE from this drawing. Use figured dimensions.
Contractor to check all dimensions on site prior to commencement of works. Any discrepancies are to be referred to the ARCHITECT.

KEY PLAN:



KEY SITE PLAN

- NOTES:**
- 1A Quadcore KS 1000 RW - 91mm thick panel. Colour: Goosewing Grey
 - 1B Quadcore KS 1000 RW - 91mm thick panel. Colour: Grey White
 - 1C Quadcore KS 1000 RW - 91mm thick panel. Colour: Pure Grey
 - 1D Quadcore KS 1000 RW - 91mm thick panel. Colour: White XL Forte
 - 2 Quadcore AWP 1000 FL - 88mm thick panel. Colour: Anthracite
 - 3 Green wall panel - galv MS frame with SI SL lattice to S.E.'s details with planting and irrigation system to Landscape Consultant requirements.
 - 4 Thermally broken and self-draining PPC aluminium double glazed curtain wall system with PPC aluminium spandrels and aluminium pressure caps. Colour: Anthracite.
 - 5 Thermally broken and self-draining PPC aluminium double glazed curtain wall system with glazed spandrels. Colour: Anthracite.
 - 6 Kingspan Dri-Design rainscreen system with shadow gap panels on 100mm quadcore Karrier system. Colour - To be selected.
 - 7 PPC aluminium coping. Colour: Anthracite.
 - 8 PPC aluminium dock leveller door to match cladding.
 - 9 PPC aluminium grade level door to match cladding.
 - 10 Insulated PPC MS escape door to match cladding.
 - 11 Canopy. Colour: Anthracite to outer faces. Colour: Corten to inner reveals.
 - 12 High performance opaque light panel, frame colour anthracite.

REVISIONS

NO.	DATE	REV. BY	CHECKED	DESCRIPTION

02.05.2023 * IK NW ISSUED FOR PLANNING COMPLIANCE

TOT ARCHITECTS

REGISTERED OFFICE
4P Upper Mount Street
Dublin 2, Ireland

T: +353 1 709 7000
W: www.totarch.ie
E: info@totarch.ie

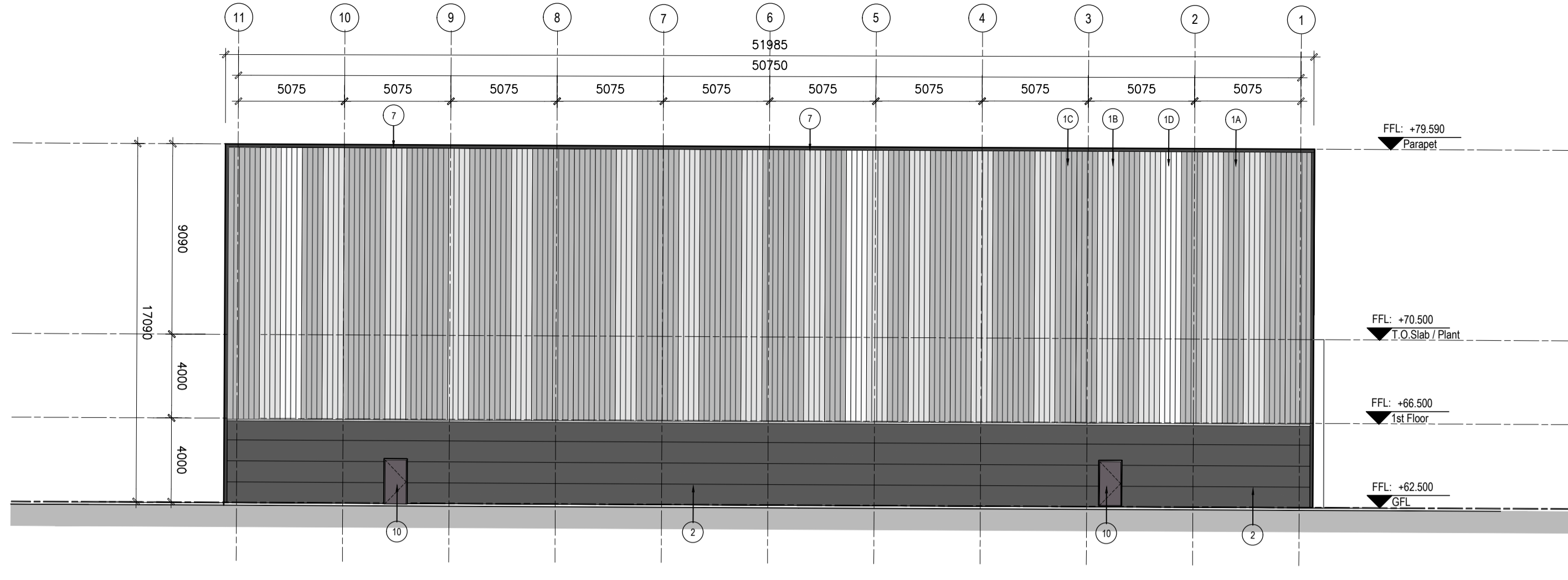
PROJECT:
WAREHOUSE/LOGISTICS, OFFICE & CAFÉ / RESTAURANT DEVELOPMENT
AT CALMOUNT ROAD, BALLYMOUNT, DUBLIN 12

STAGE:
PLANNING COMPLIANCE

DRAWING TITLE:
UNIT 2 ELEVATIONS
PLANNING CONDITION 15

DATE: OCT 2022 DRAWING NO: PA-420
SCALE: 1:200 @ A1
DRAWN: PT
CHECKED: ND SHEET SIZE: REVISION:
JOB NO: 18-42 FILE NAME: **A1**

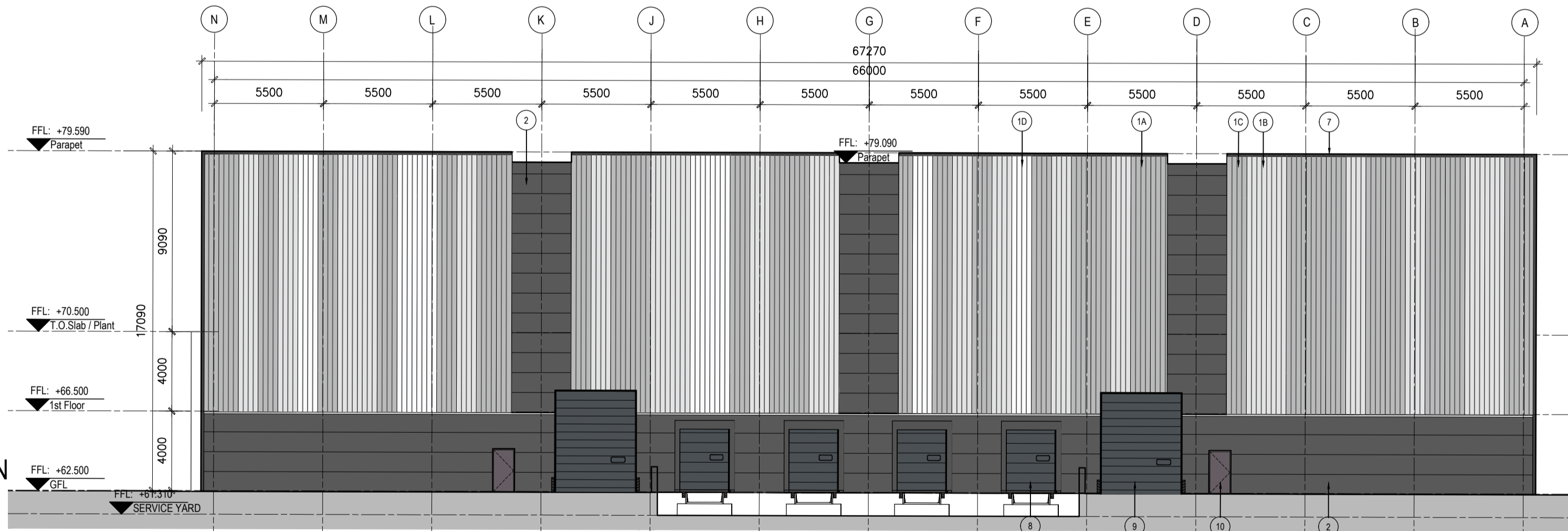
1 SOUTH-EAST ELEVATION
PA-420 UNIT 02 Scale: 1 : 200



2 NORTH-EAST ELEVATION
PA-420 UNIT 02 Scale: 1 : 200



3 SOUTH-WEST ELEVATION
PA-420 UNIT 02 Scale: 1 : 200



4 NORTH-WEST ELEVATION
PA-420 UNIT 02 Scale: 1 : 200

