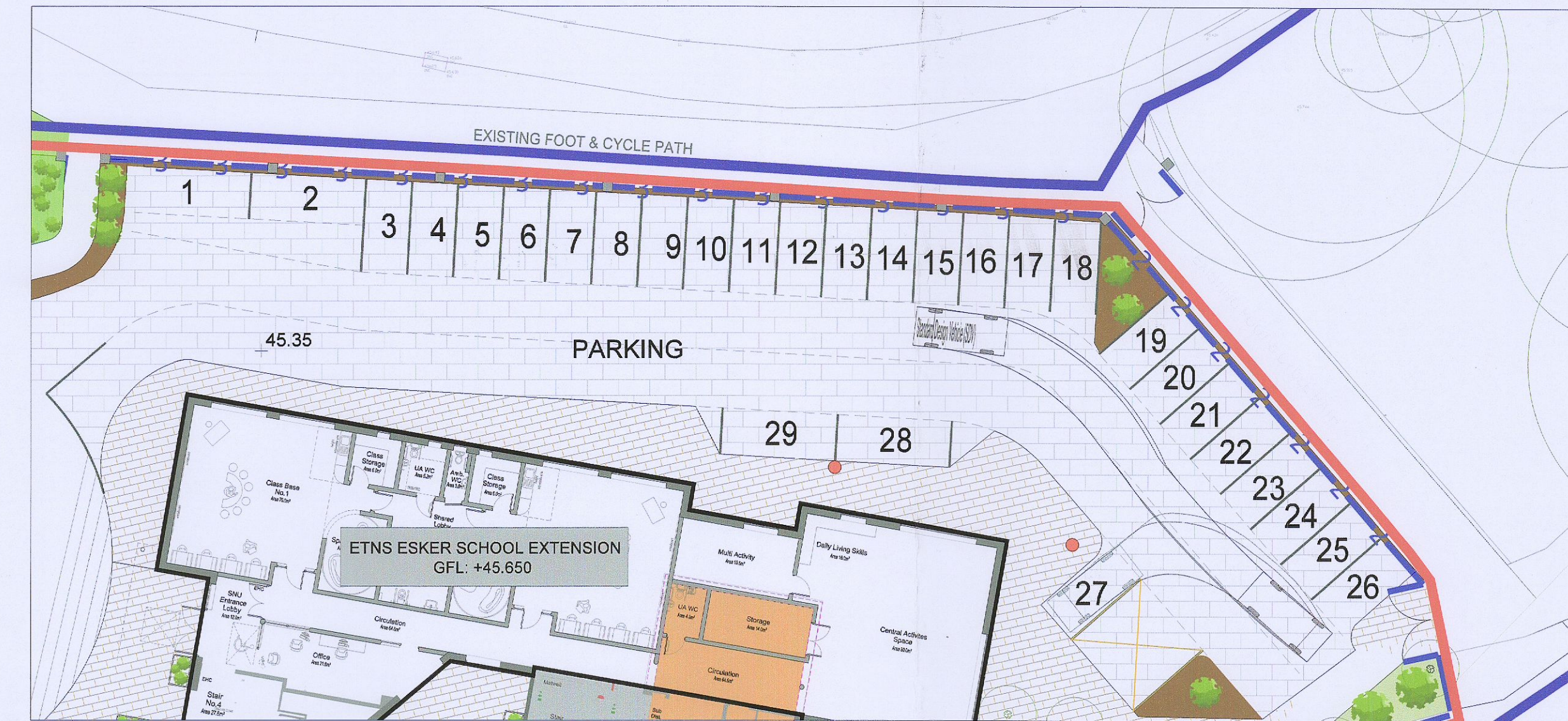
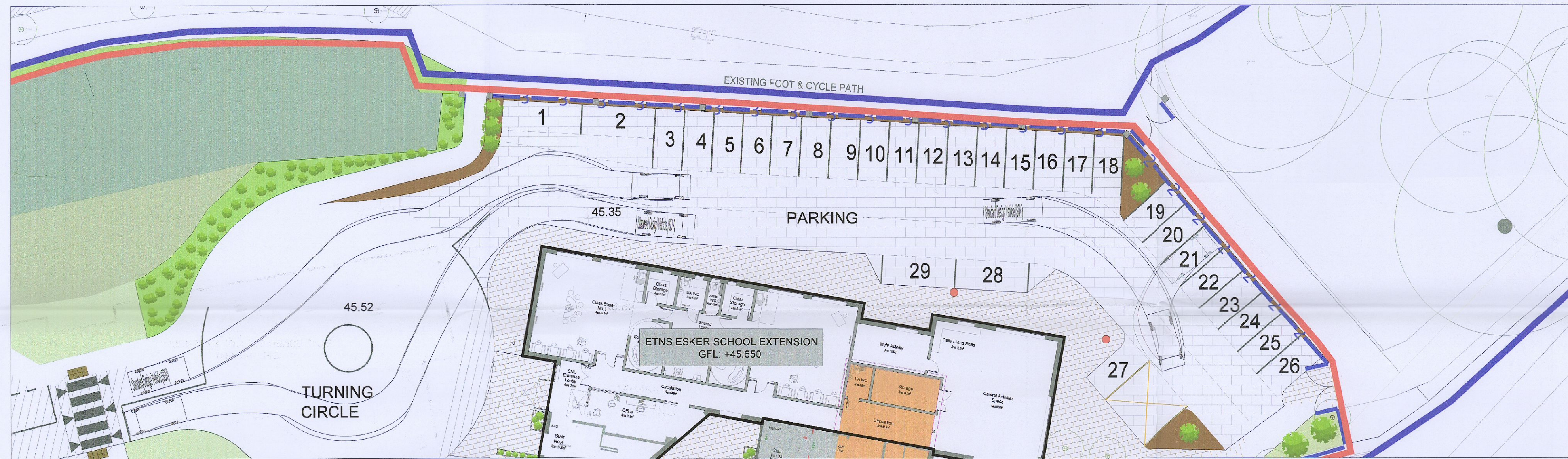


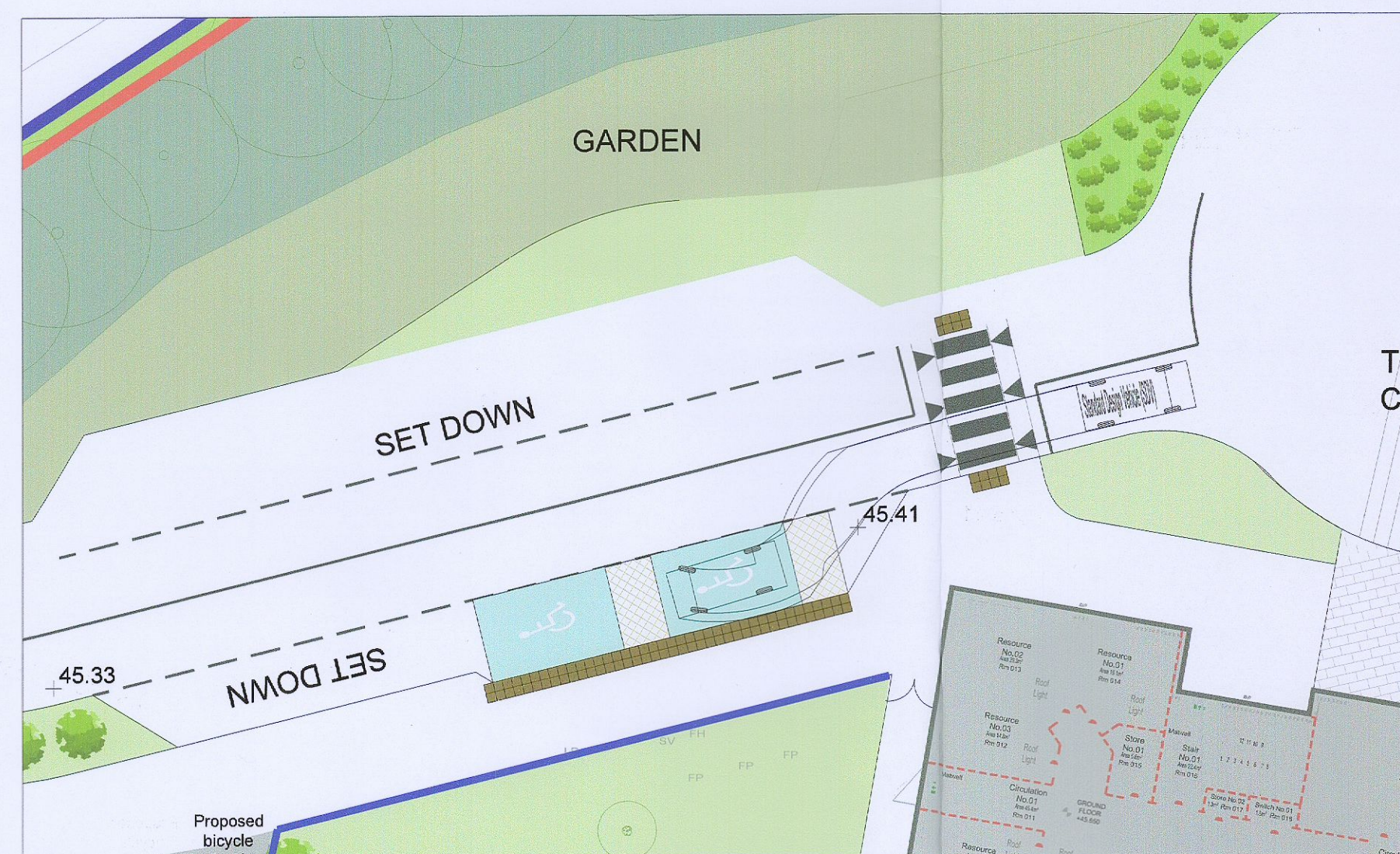
PARKING SPACES 1 & 20



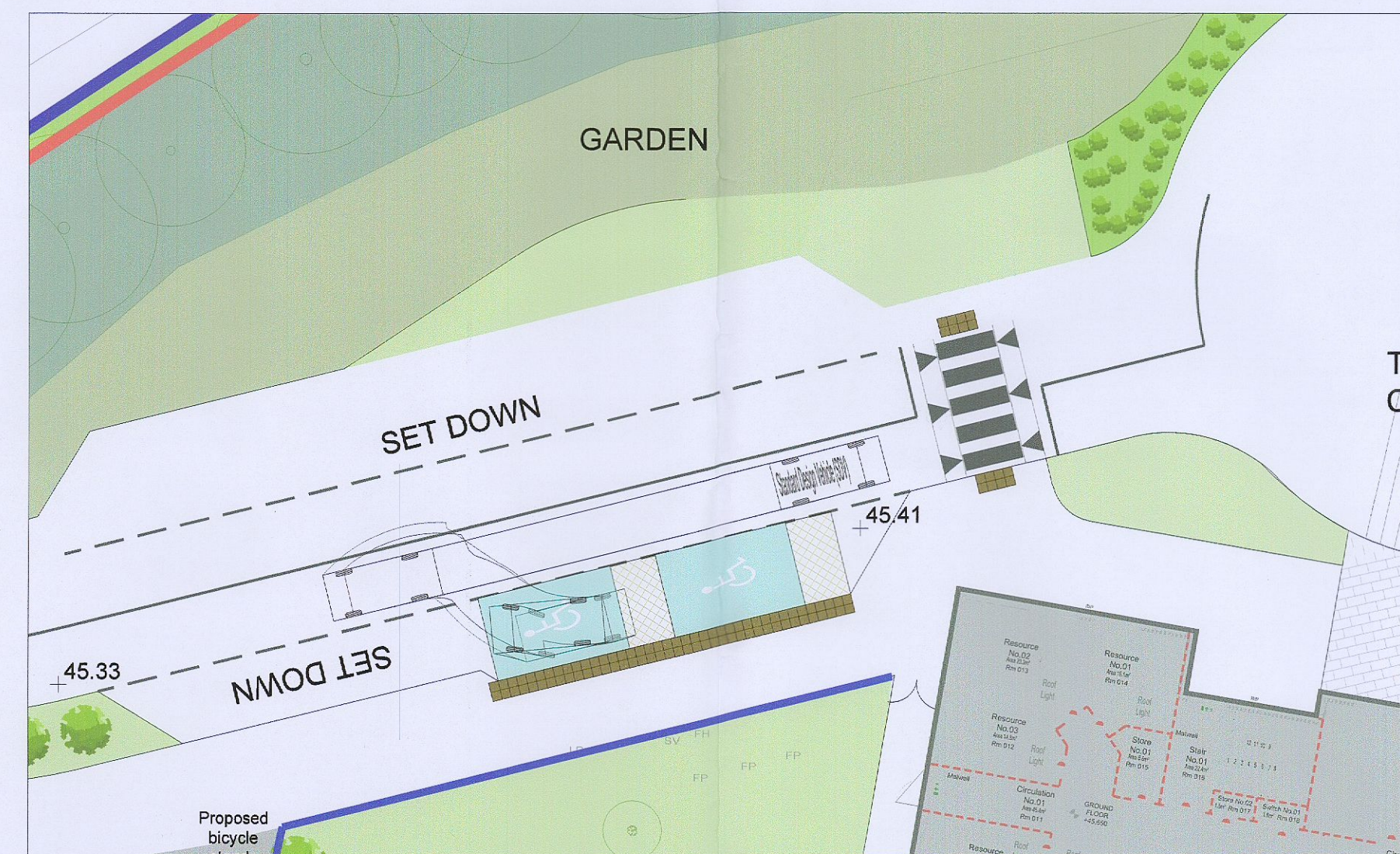
PARKING SPACE 27



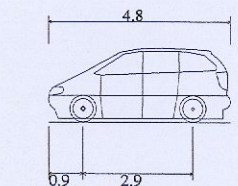
PARKING SPACE 21 & TWO VEHICLES PASSING EACH OTHER AT PINCH POINT



MOBILITY IMPAIRED SPACE NO. 1



MOBILITY IMPAIRED SPACE NO. 2



Standard Design Vehicle (SDV)  
 Overall Length 4.800m  
 Overall Width 2.000m  
 Overall Body Height 1.950m  
 Min Body Ground Clearance 0.100m  
 Track Width 2.000m  
 Lock-to-lock time 4.00s  
 Wall to Wall Turning Radius 6.000m

- Notes:
1. This drawing is the copyright Collins Boyd Engineering Ltd. It is a confidential document and must not be copied, used or its contents divulged without prior written permission.
  2. DO NOT SCALE, use figured dimensions only, if in doubt ask.
  3. Drawings for Planning Permissions purposes only unless otherwise stated.

| Rev | Description                    | By | Date       |
|-----|--------------------------------|----|------------|
| PL0 | Issued for Further Information | JR | 26/05/2023 |



Galway Road  
 Roscommon  
 Co. Roscommon  
 F42 V344  
 Phone: 090 66 34421  
 Fax: 090 66 34423  
 Email: info@collinsboydeng.com

Client:  
 BóM Esker Educate Together  
 National School, Esker Lane

Drawing Title:  
 Autotrack - Car

Job Title:  
 Proposed Additional Accommodation Scheme to Esker  
 Educate Together National School, Esker Lane

|           |            |
|-----------|------------|
| Status:   | Planning   |
| Date:     | May 2023   |
| Scale:    | 1:250 @ A1 |
| Drawn by: | JR         |
| JOB No.   | 21.135     |
| DRG No.   | AT02       |
| REV.      | PL0        |