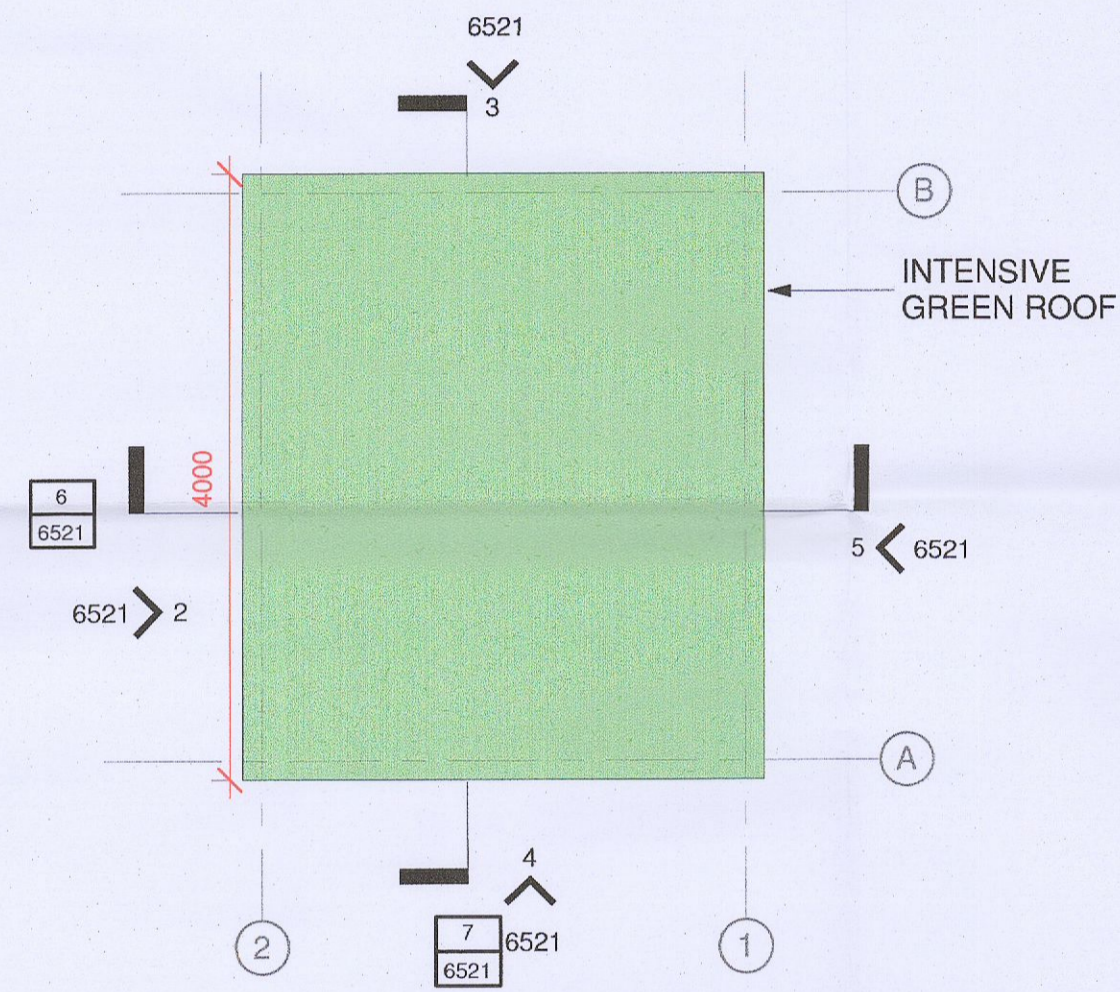


1) 6521 Bin Store - Plan
1:50



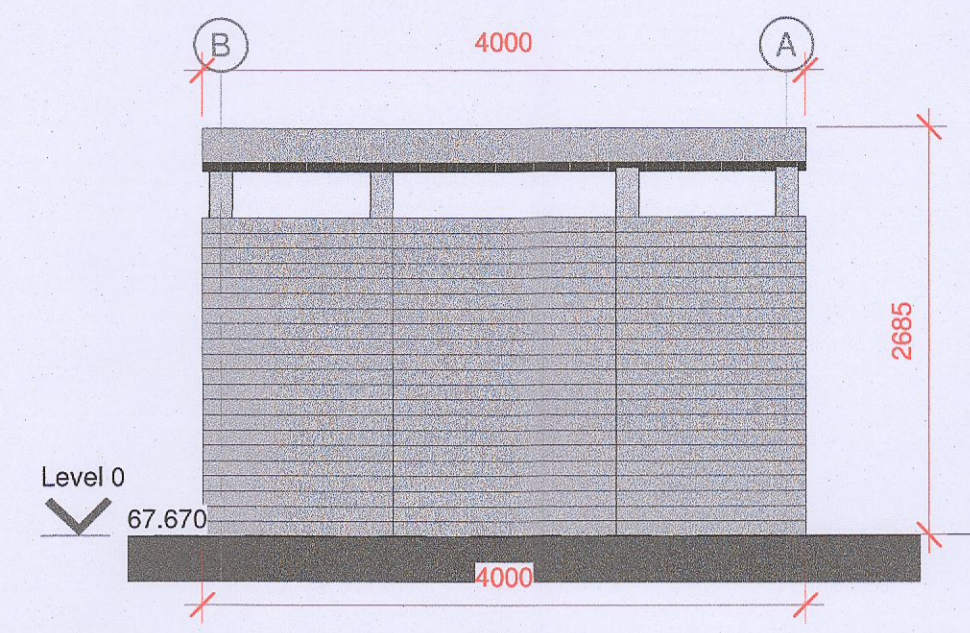
8) 6521 Bin Store Roof - Plan
1:50

BIN STORE CONSTRUCTION DETAILS

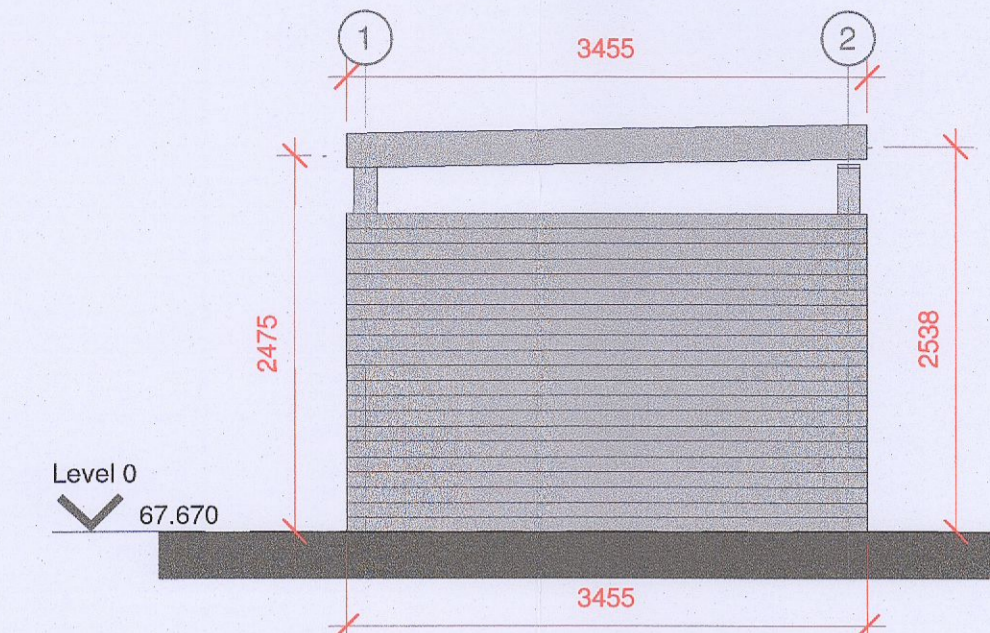
INTENSIVE GREEN ROOF FINISH ON SHELTER ROOF;
 100x50mm TIMBER SHEETING TO BACK & ONE SIDE OF SHELTER; SECRET FIXED TO COLUMNS.
 RAFTERS TO BE FIXED WITH GALVANISED JOIST HANGERS TO 150x50mm CROSS BEAMS AT 1/80 FALL TO BACK.
 GALVANISED STEEL COLUMNS ON BOLTED STEEL BASE PLATE FIXED BELOW SLAB LEVEL.

NOTES

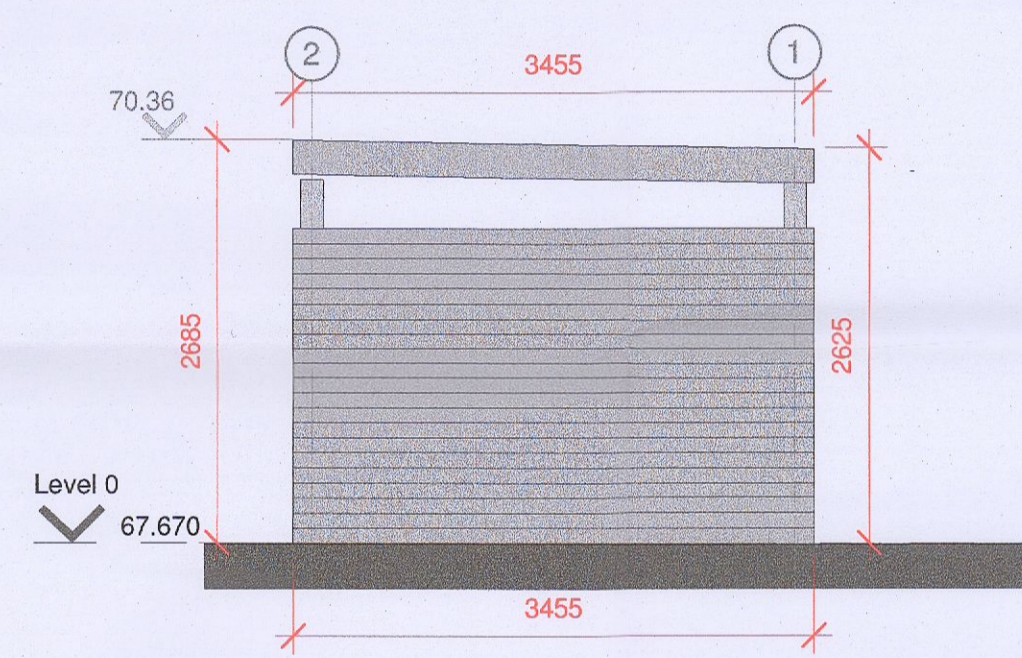
REFER TO SITE LOCATION PLAN FOR LOCATIONS AS PER KEY DESCRIPTION LEGEND



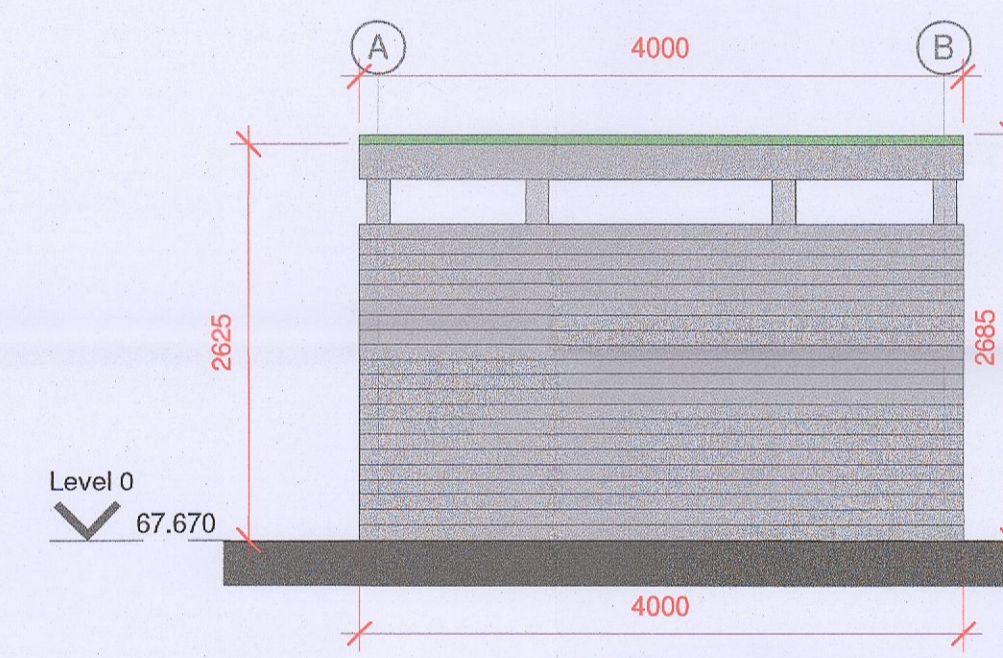
2) 6521 Elevation 1
1:50



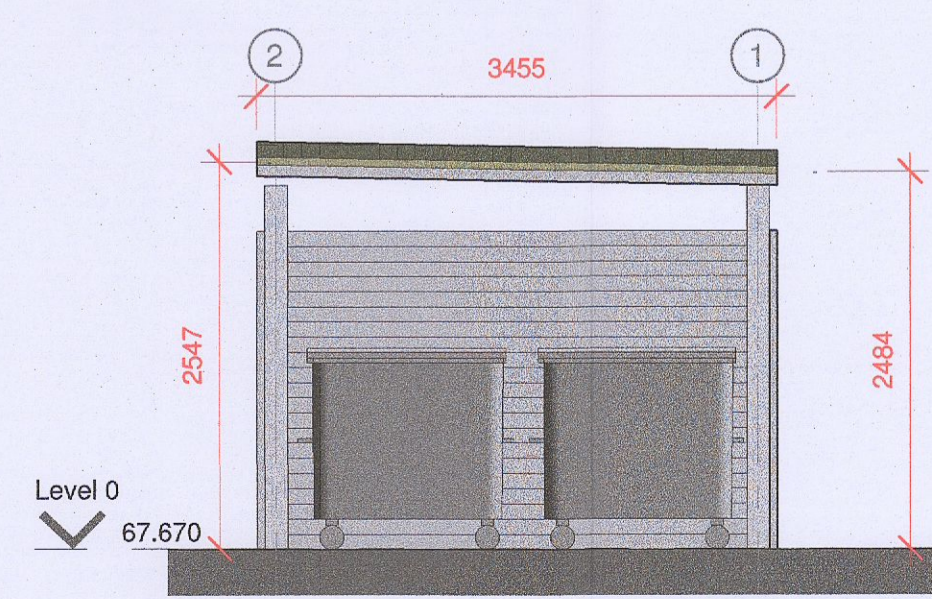
3) 6521 Elevation 2
1:50



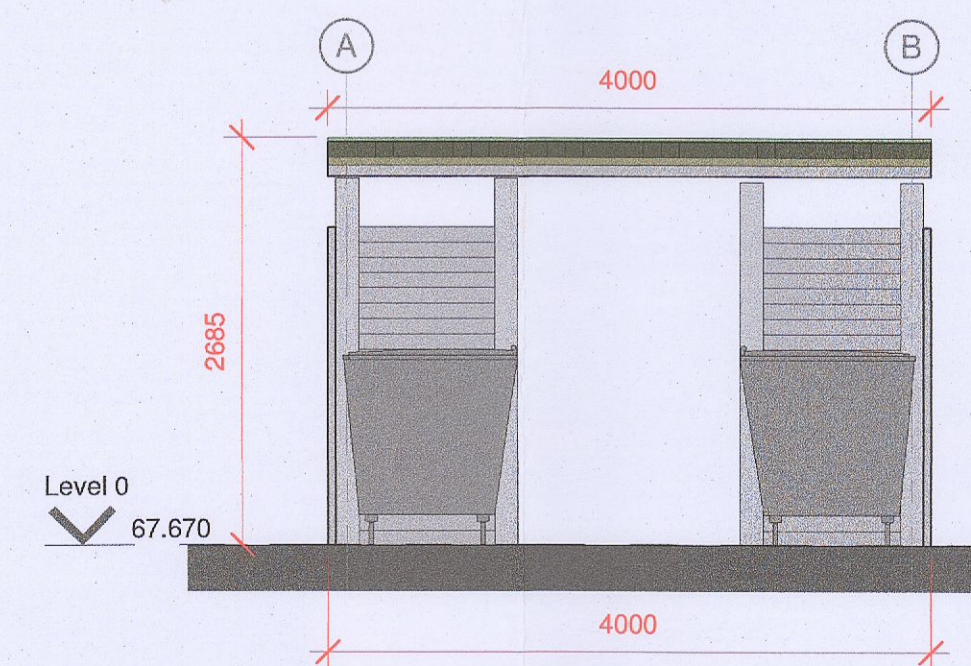
4) 6521 Elevation 3
1:50



5) 6521 Elevation 4
1:50



6) 6521 Section 1
1:50



7) 6521 Section 2
1:50

NOTES

KEYNOTES

LEGEND

REV.	DATE	DESCRIPTION	DRN	ENG	CHK	APP
P2	04.04.2023	FURTHER INFORMATION ISSUE	KTA	KTA		
P1	16.12.2022	ISSUED FOR PLANNING	KTA	KTA		

ANY UNAUTHORIZED USE OR REPRODUCTION OF THIS DOCUMENT IN WHOLE OR IN PART IS PROHIBITED. DELETE THIS DOCUMENT IF YOU HAVE RECEIVED IT IN ERROR

MECHANICAL & ELECTRICAL ENGINEER

CIVIL & STRUCTURAL ENGINEER

ARCHITECT

KAVANAGH TUITE ARCHITECTS
 TERNING HILLS, CLONKILASH ROAD, DUBLIN 15, IRELAND
 T: +353 (0)1 289 9999 FAX: +353 (0)1 289 9998 E: info@kavanaghtuite.ie

ARCHITECT

BB7
 BSB Fire & Security Consulting
 100, Main Street, Clonsilla, Co. Wick
 Wick, Co. Wick, Ireland
 T: +353 (0)1 925 2022 E: info@bb7.ie www.bb7.ie

SECURITY ENGINEER

CUNDALL
 Cundall Engineering Limited
 78 Dunmoyne Drive, Dublin
 D22 3DZ, Ireland
 T: +353 (0)1 919 7700 E: info@cundall.com W: www.cundall.com

OTHER ENGINEER

Macro Works Ltd.
 Ground Floor, Hibernia House,
 Cherrywood Business Park,
 Lough/Inchicore,
 Ireland
 D18 E540

PROJECT: UNIT 1, M50 BUSINESS PARK

TITLE: BIN STORE DETAILS

DRAWING NO.: J2139-KTA-22-XX-DR-A-6521

A1	SCALE: As indicated	AGILE No.:	REV: P2
----	---------------------	------------	---------