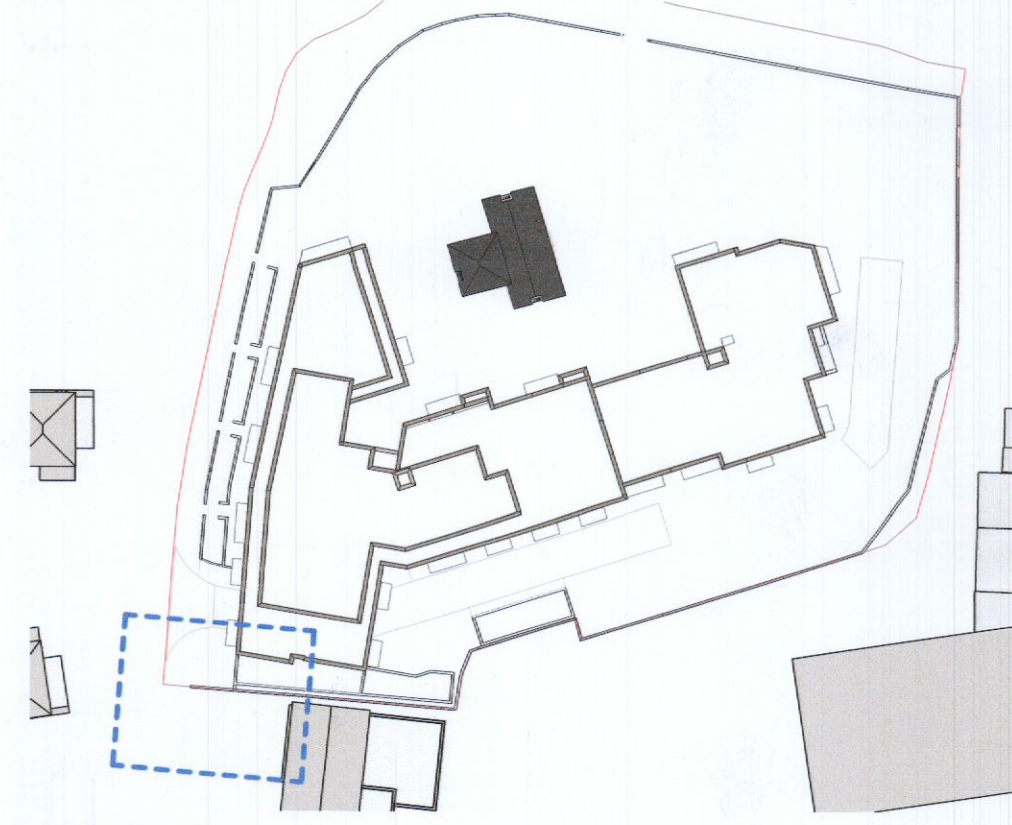
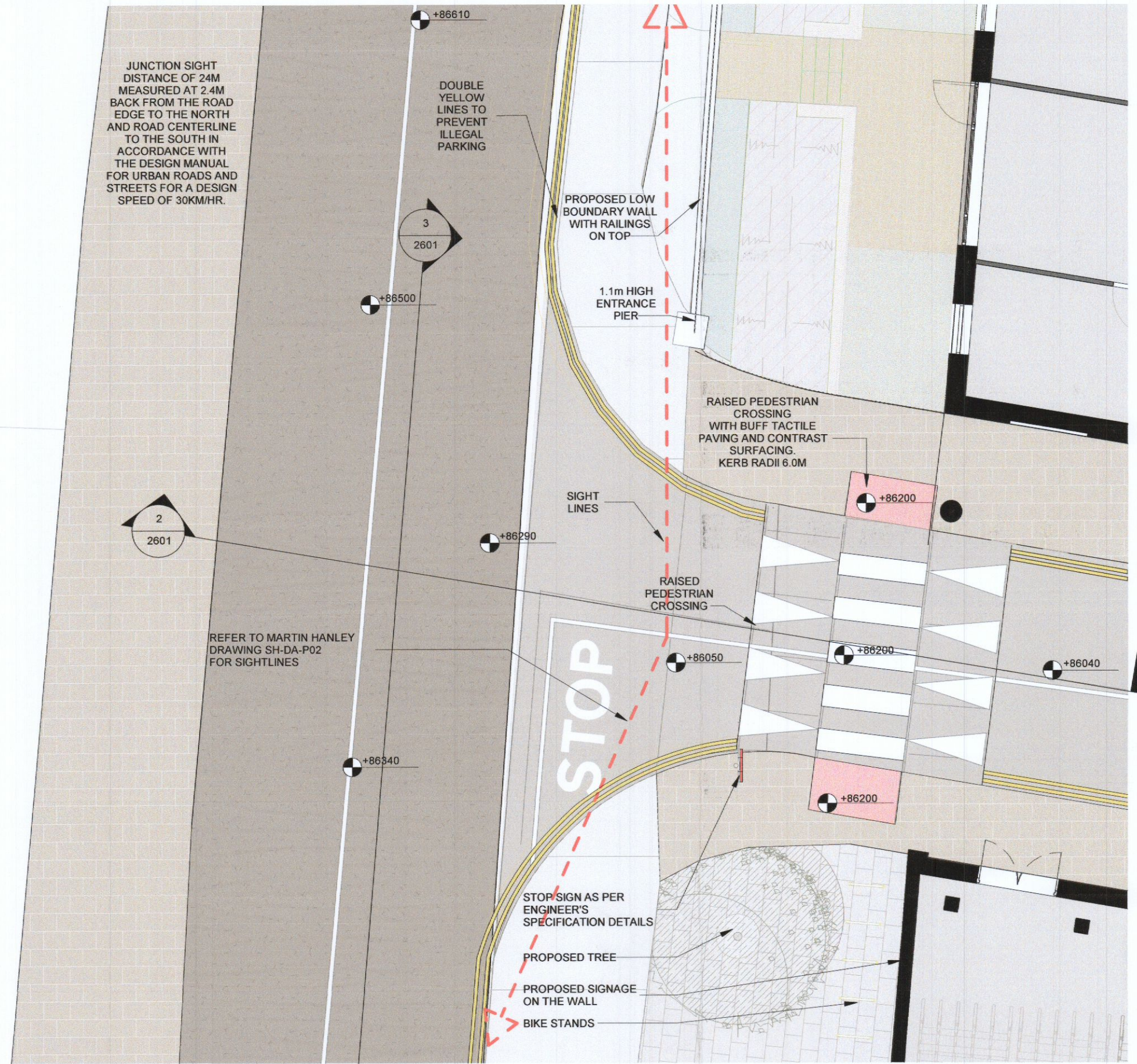


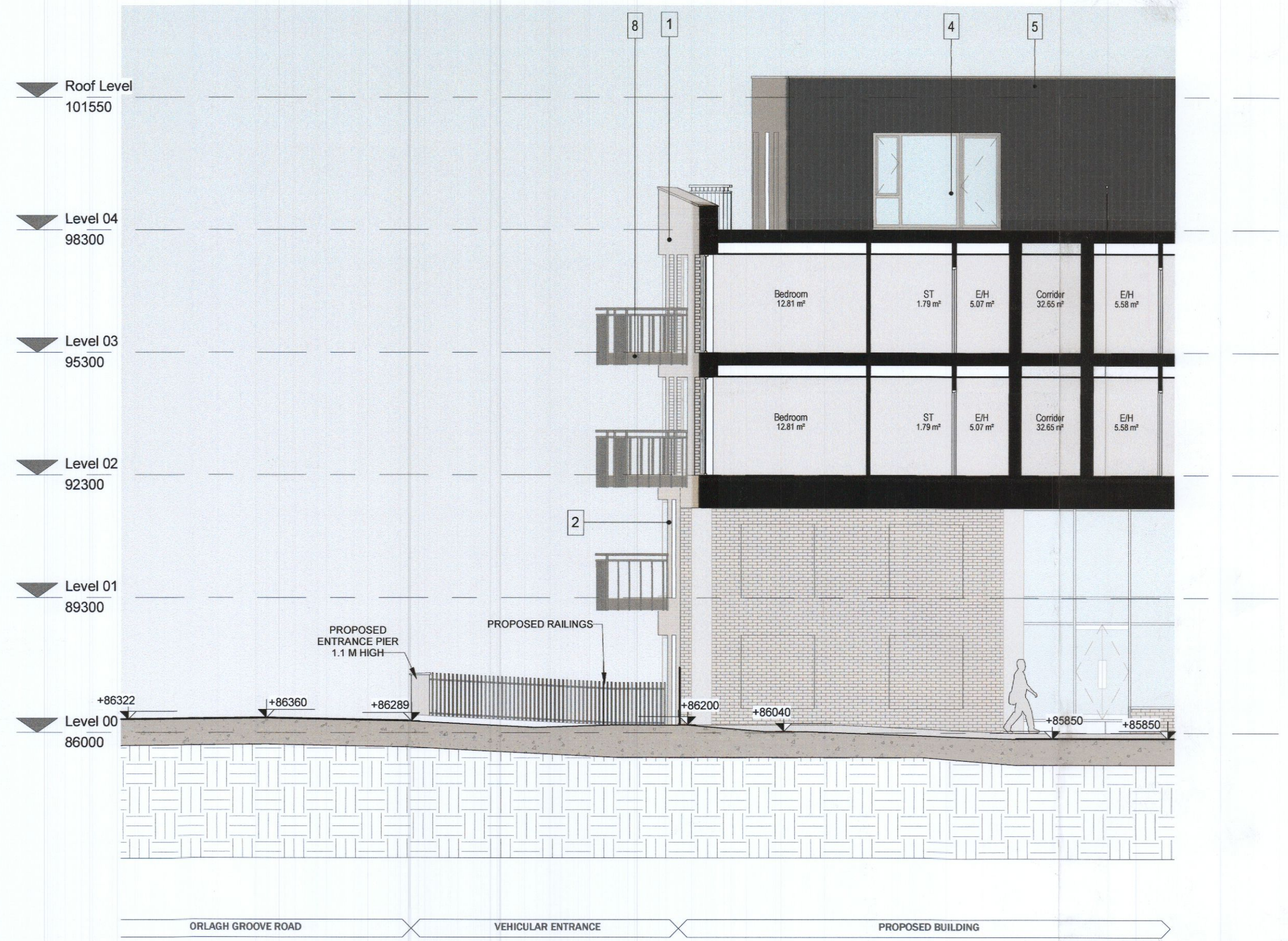
# PLANNING DRAWING



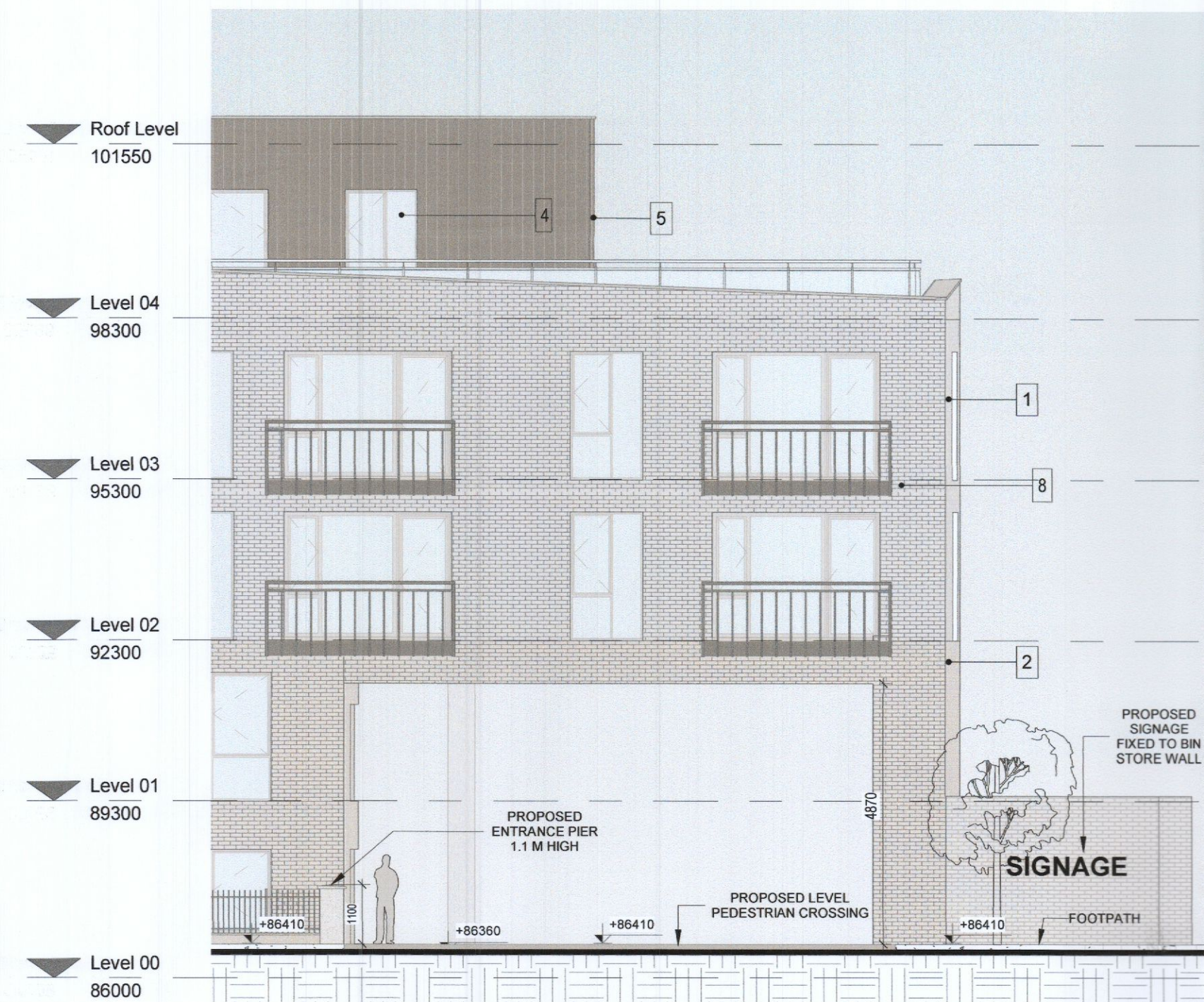
4 Keyplan  
1 : 1000



1 Vehicular Entrance Plan  
1 : 100



2 Vehicular Entrance Section  
1 : 100



3 Vehicular Entrance Elevation  
1 : 100

**ELEVATIONS / SECTIONS MATERIAL KEY**

- SELECTED BRICK TYPE 1 - REFER TO THE DESIGN STATEMENT FOR MORE INFORMATION
- SELECTED BRICK TYPE 2 - REFER TO THE DESIGN STATEMENT FOR MORE INFORMATION
- SELECTED BRICK TYPE 3 - REFER TO THE DESIGN STATEMENT FOR MORE INFORMATION
- SELECTED WINDOW SYSTEM TO SELECTED COLOUR BY ARCHITECT
- SELECTED PROFILED CLADDING TO SELECTED COLOUR BY ARCHITECT
- MILD STEEL POWDER COATED/PAINTED RAILING TO COLOUR BY ARCHITECT
- SELECTED METAL/GLAZED BALUSTRADE TO SELECTED COLOUR BY ARCHITECT
- PROPOSED METAL BALCONY SYSTEM
- INSET BRICK PANEL DETAIL
- SELECTED METAL COPPING TO SELECTED COLOUR BY ARCHITECT
- SELECTED SEDUM GREEN ROOF. BUILDUP TO MANUFACTURERS DESIGN AND SPECIFICATION
- IN-SITU CONCRETE GROUND FLOOR ON RIGID INSULATION TO MEET U-VALUES REQUIRED FOR TGD PART L ON RADON MEMBRANE ON BUILD UP ALL TO STRUCTURAL ENGINEERS DESIGN AND DETAIL
- FOUNDATION AND WATERPROOFING TO STRUCTURAL ENGINEERS DETAIL AND SPECIFICATION

Rev	Date	Description	Issued By
P01	05/04/2023	ISSUED FOR ADDITIONAL INFORMATION	AM

Project Stage  
**PLANNING ADDITIONAL INFORMATION**

Client:  
EMMAVILLE LTD

Project:  
SCHOLARSTOWN HOUSE D16

Drawing Title:  
VEHICULAR ENTRANCE AND SIGNAGE

Drawn	Checked	Paper Size	Scale	@A1	Date
KC	CS	A1	As indicated		02/13/23

Project No: PE21023  
Drawing No: 2601  
Classification: P01

File Name:  
PE21023-CWO-ZZ-ZZ-DR-A-2601

Status:  
ISSUED FOR ADDITIONAL INFORMATION



No.1 Sarsfield Quay, Dublin 7, D07 R9FH  
t: 01 518 0170 e: admin@cwoarchitects.ie  
Dublin | Cork | Galway | London | UK & Europe +  
www.cwoarchitects.ie