

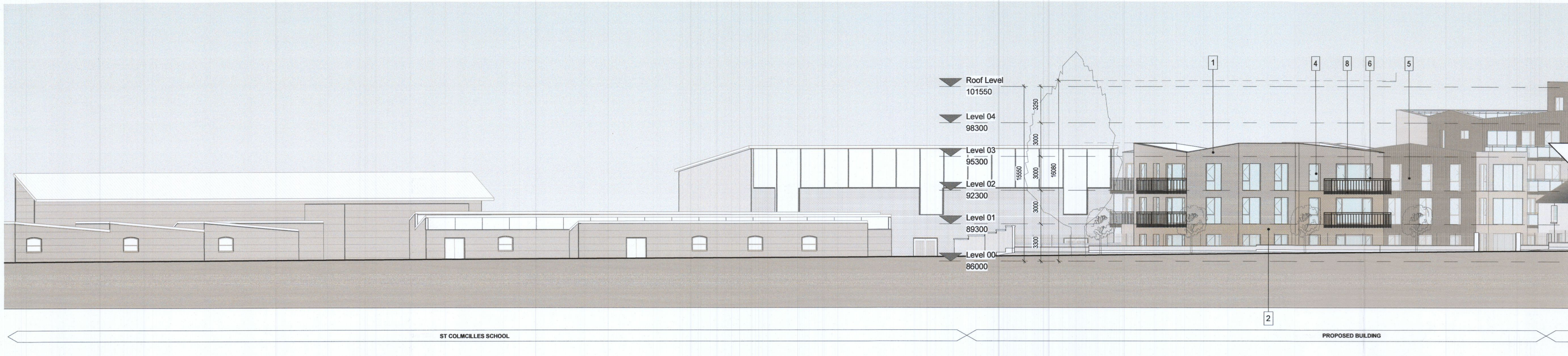
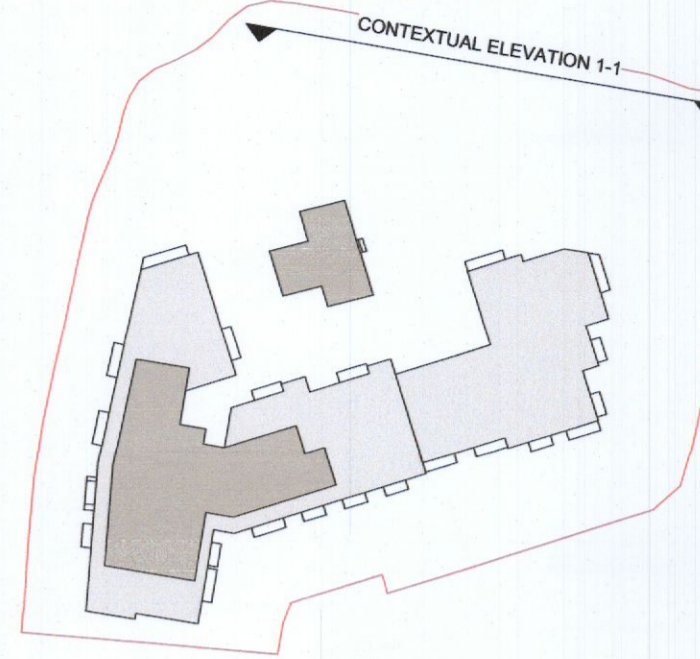
THE COPYRIGHT OF THIS DRAWING IS VESTED WITH CW O'BRIEN ARCHITECTS LIMITED AND MUST NOT BE COPIED OR REPRODUCED WITHOUT THE CONSENT OF THE COMPANY.

FIGURED DIMENSIONS ONLY TO BE TAKEN FROM THIS DRAWING. DO NOT SCALE.

ALL CONTRACTORS MUST VISIT THE SITE AND BE RESPONSIBLE FOR CHECKING ALL SETTING OUT DIMENSIONS AND NOTIFYING THE ARCHITECT OF ANY DISCREPANCIES PRIOR TO ANY MANUFACTURE OR CONSTRUCTION WORK.

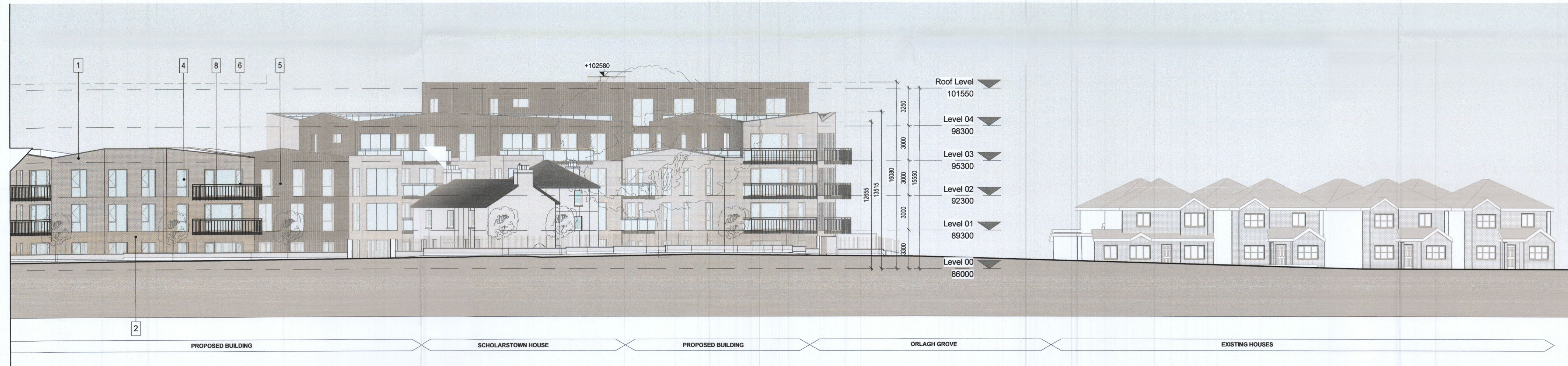
NOTES:

PLANNING DRAWING



1 PROPOSED CONTEXTUAL SITE ELEVATION 1

1 : 200



2 PROPOSED CONTEXTUAL SITE ELEVATION 1-CONTINUED

1 : 200

ELEVATIONS / SECTIONS MATERIAL KEY

- 1 SELECTED BRICK TYPE 1- REFER TO THE DESIGN STATEMENT FOR MORE INFORMATION
- 2 SELECTED BRICK TYPE 2- REFER TO THE DESIGN STATEMENT FOR MORE INFORMATION
- 3 SELECTED BRICK TYPE 3- REFER TO THE DESIGN STATEMENT FOR MORE INFORMATION
- 4 SELECTED WINDOW SYSTEM TO SELECTED COLOUR BY ARCHITECT
- 5 SELECTED PROFILED CLADDING TO SELECTED COLOUR BY ARCHITECT
- 6 MILD STEEL POWDER COATED/PAINTED RAILING TO COLOUR BY ARCHITECT
- 7 SELECTED METAL/GLAZED BALUSTRADE TO SELECTED COLOUR BY ARCHITECT
- 8 PROPOSED METAL BALCONY SYSTEM
- 9 INSET BRICK PANEL DETAIL
- 10 SELECTED METAL COPPING TO SELECTED COLOUR BY ARCHITECT
- 11 SELECTED SEDUM GREEN ROOF, BUILDUP TO MANUFACTURERS DESIGN AND SPECIFICATION
- 12 IN-SITU CONCRETE GROUND FLOOR ON RIGID INSULATION TO MEET U-VALUES REQUIRED FOR TGD PART L ON RADON MEMBRANE ON BUILD UP ALL TO STRUCTURAL ENGINEERS DESIGN AND DETAIL
- 13 FOUNDATION AND WATERPROOFING TO STRUCTURAL ENGINEERS DETAIL AND SPECIFICATION

PD2	05/04/2023	ISSUED FOR ADDITIONAL INFORMATION	AM
P01	17/10/2022	ISSUED FOR PLANNING	AM
Rev	Date	Description	Issued By

Project Stage

PLANNING ADDITIONAL INFORMATION

Client:
EMMAVILLE LTD

Project:
SCHOLARSTOWN HOUSE D16

Drawing Title:
PROPOSED CONTEXTUAL SITE ELEVATIONS 01

Drawn	Checked	Paper Size	Scale	Date
VG	AM	A1	As indicated	03/08/2022
Project No.	Drawing No.	Classification	Revision	
PE21023	2211		P02	

File Name:
PE21023-CWO-ZZ-ZZ-DR-A-2211

Status:
ISSUED FOR ADDITIONAL INFORMATION

C+W O'BRIEN ARCHITECTS

No.1 Sarsfield Quay, Dublin 7, D07 R9FH
t: 01 518 0170 e: admin@cwarchitects.ie
Dublin | Cork | Galway | London | UK & Europe +
www.cwarchitects.ie

Please consider the environment before printing this sheet