

Plant name & size	D/m2	PBED 01	PBED 02	PBED 03	PBED 04	PBED 05	PBED 06	PBED 07	PBED 08	TERRACE	SEDUM
<b>TREES</b>											
(EG) Eucryphia glutinosa - specimen 50L pot - min 25m high											
(HM) Heptacodium miconioides - 20L pot specimen											
(MS) Malus sylvestris 18-20cm girth - standard 1.7m standards											
(PS) Prunus avium 'Stella' 12-14cm girth - 20L pot											
(SA) Sorbus aucuparia 18-20cm girth - 50L pot											
(SA) Sorbus aucuparia 'Joseph Rock' 18-20cm girth - 50L pot											
(TD) Tetradium daniellii 12,14cm girth - 20L pot											
		5	3	0	0	3	3	3	3	0	0
<b>BUSHES</b>											
(bpj) Betula pubescens 1+1 transplant		1	7								
(coa) Corylus avellana 7L pot		1	2								
(cma) Crataegus monogyna 1+1 transplant		1	8	5	0	0	0	1	1	2	0
		17	5	0	0	0	0	1	1	2	0



(EG) Eucryphia glutinosa (HM) Heptacodium miconioides (MS) Malus sylvestris



(PS) Prunus avium 'Stella' (SA) Sorbus aucuparia 'Joseph Rock' (SA) Sorbus aucuparia

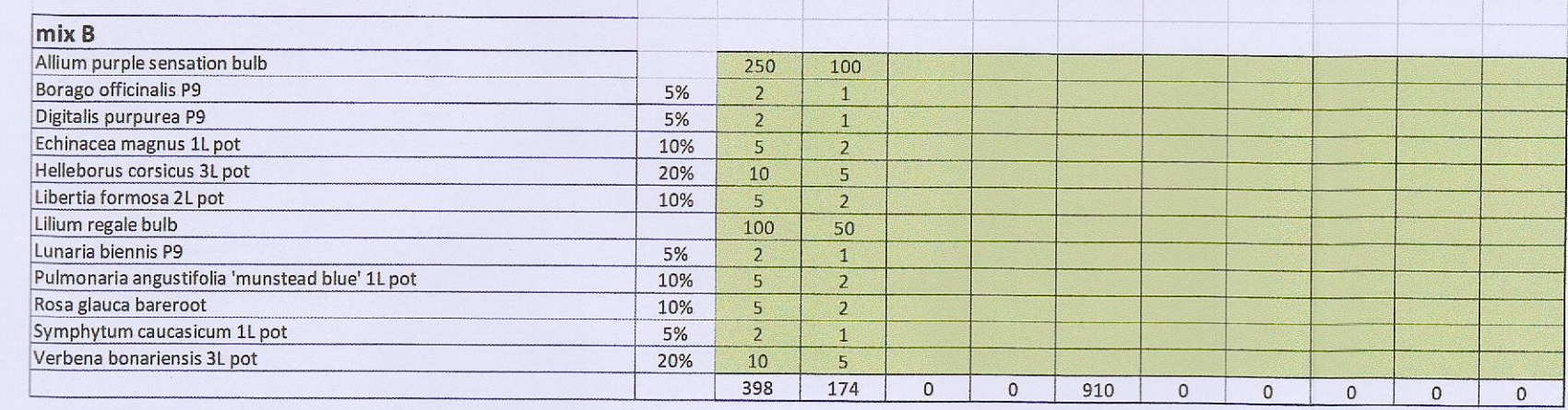


(TD) Tetradium daniellii



(bpj) Betula pubescens (coa) Corylus avellana (cma) Crataegus monogyna

Plant name & size	D/m2	PBED 01	PBED 02	PBED 03	PBED 04	PBED 05	PBED 06	PBED 07	PBED 08	TERRACE	SEDUM
<b>SHRUBS</b>											
(a) Ilex aquifolium 7L pot, Hmin 1m, Wmin 45cm from base											
(Rc) Rosa canina 5L pot											
(Va) Viburnum opulus 'Roseum' 5L pot											
		0	5	0	0	0	0	0	0	0	0
<b>GROUND COVER MIX</b>											
<b>Mix A (5 plants / m²)</b>											
Crocus tommasinianus bulb											400
Echinops ritro p9		10%									6
Nepeta faassenii 'Six Hills Giant' p9		50%									28
Verbena bonariensis p9		30%									17
Vinca minor p9		10%									6
		0	0	0	0	455	0	0	0	0	0
<b>Mix B</b>											
Allium purple sensation bulb			250	100							
Borago officinalis p9		5%	2	1							
Digitalis purpurea p9		5%	2	1							
Echinacea magnus 1L pot		10%	5	2							
Helleborus corsicus 3L pot		20%	10	5							
Libertia formosa 2L pot		10%	5	2							
Lilium regale bulb		5%	2	1							
Lunaria biennis p9		5%	100	50							
Pulmonaria angustifolia 'munstead blue' 1L pot		10%	5	2							
Rosa glauca bareroot		10%	5	2							
Symphyltum caucasicum 1L pot		5%	2	1							
Verbena bonariensis 3L pot		20%	10	5							
		398	174	0	0	910	0	0	0	0	0



(a) Ilex aquifolium (Rc) Rosa canina (Va) Viburnum opulus



Crocus lom. Echinops ritro Nepeta faassenii Verbena bonariensis Vinca minor



Allium purple Borago officinalis Digitalis purpurea Echinacea magnus Helleborus corsicus Libertia formosa

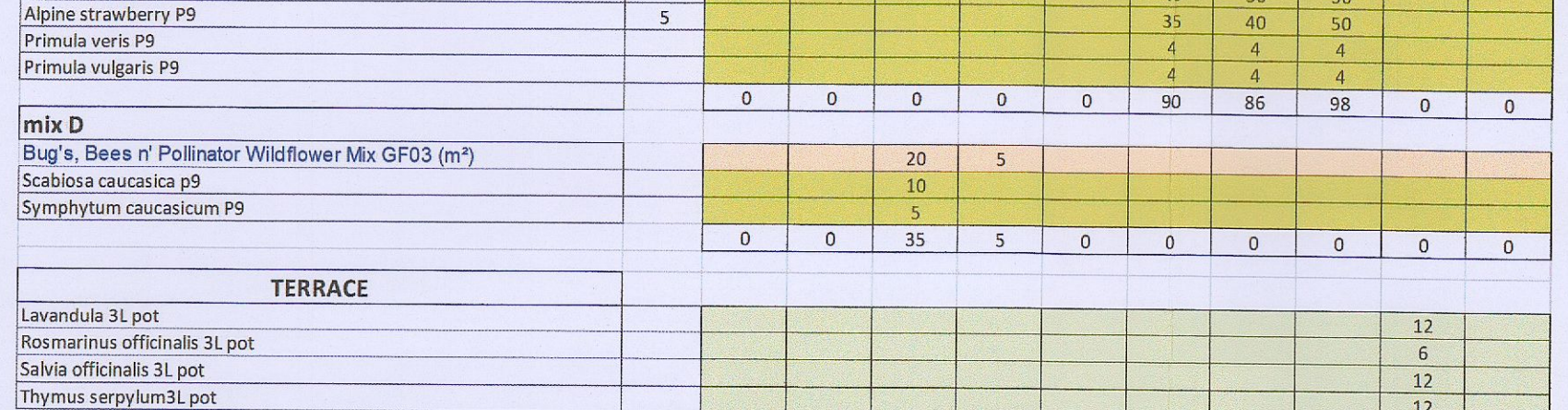


Lilium regale Lunaria biennis Pulmonaria angustifolia Rosa glauca Symphytum c.



Verbena bonariensis

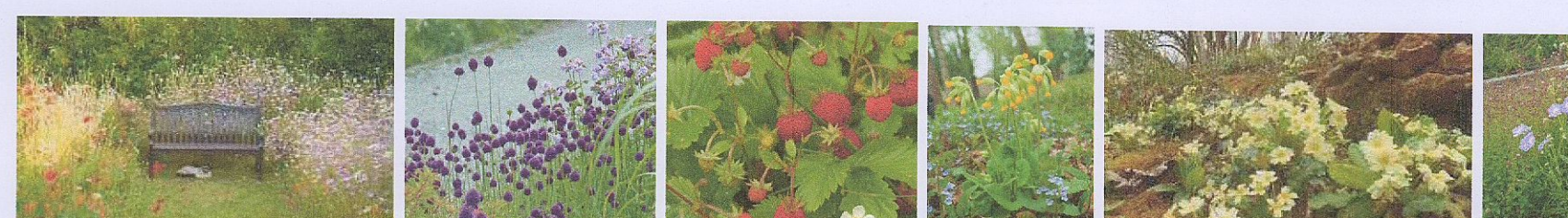
Plant name & size	D/m2	PBED 01	PBED 02	PBED 03	PBED 04	PBED 05	PBED 06	PBED 07	PBED 08	TERRACE	SEDUM
<b>CLIMBING PLANTS</b>											
Clematis tangutica 5L pot											
Hydrangea petiolaris 5L pot											
Lonicera periclymenum 5L pot											
Morella cherry 5L pot as espalier											
Passiflora caerulea 5L pot											
Pyracantha saphyr orange 10L pot - trained to wires on wall											
		15	22	4	8	0	8	10	11	0	0
<b>MIX Meadow, Bulbs, Plugs</b>											
Small Garden Wildflower Lawn Mixture GF01 (m²)											
<b>Mix C</b>											
Small Garden Wildflower Lawn Mixture GF01 (m²)											
Allium sphaerocephalon bulbs											
Alpine strawberry p9											
Primula veris p9											
Primula vulgaris p9											
		0	0	0	0	0	0	90	86	98	0
<b>Mix D</b>											
Bug's, Bees n' Pollinator Wildflower Mix GF03 (m²)											
Scabiosa caucasica p9											
Symphyltum caucasicum p9											
		0	0	35	5	0	0	0	0	0	0
<b>TERRACE</b>											
Lavandula 3L pot											
Rosmarinus officinalis 3L pot											
Salvia officinalis 3L pot											
Thymus serpyllum 3L pot											
		0	0	0	0	0	0	0	0	42	0



Clematis tangutica Hydrangea petiolaris Lonicera periclymenum Morella cherry Passiflora caerulea Pyracantha saphyr



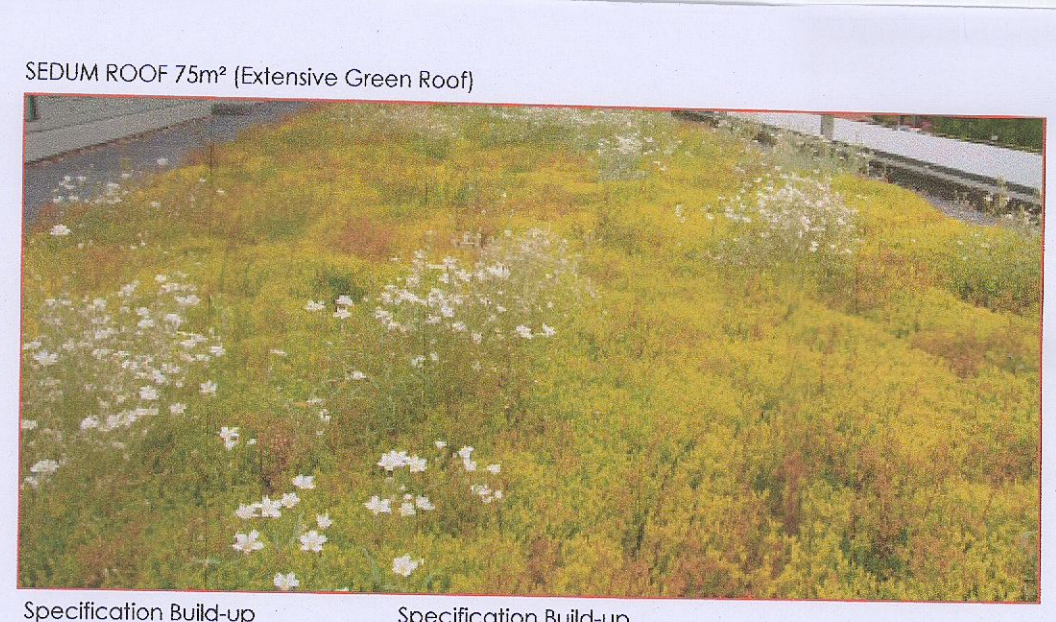
Meadow & Flowers Allium sphae. Alpine strawberry Primula veris Primula vulgaris



Scabiosa caucasica Symphytum c.



Lavandula Rosmarinus officinalis Salvia officinalis Thymus serpyllum



- Specification Build-up
- ARCHITECT SPECIFICATIONS
- Expal Vapour Barrier
- Flatboard Insulation
- Underlayer
- Root resistant capping sheet
- Specification Build-up
- LANDSCAPE SPECIFICATIONS
- Foil
- Fibre protection map
- Drainage board
- Filter fleece
- Biodiverse Substrate / Intensive Green Roof Growing Media

BIODIVERSITY (colour, foliage, seasonal interest)  
 NATIVE & NON NATIVE PLANTS  
 NECTAR FOR BEES (pollinator friendly)  
 FRUITS FOR BIRDS

