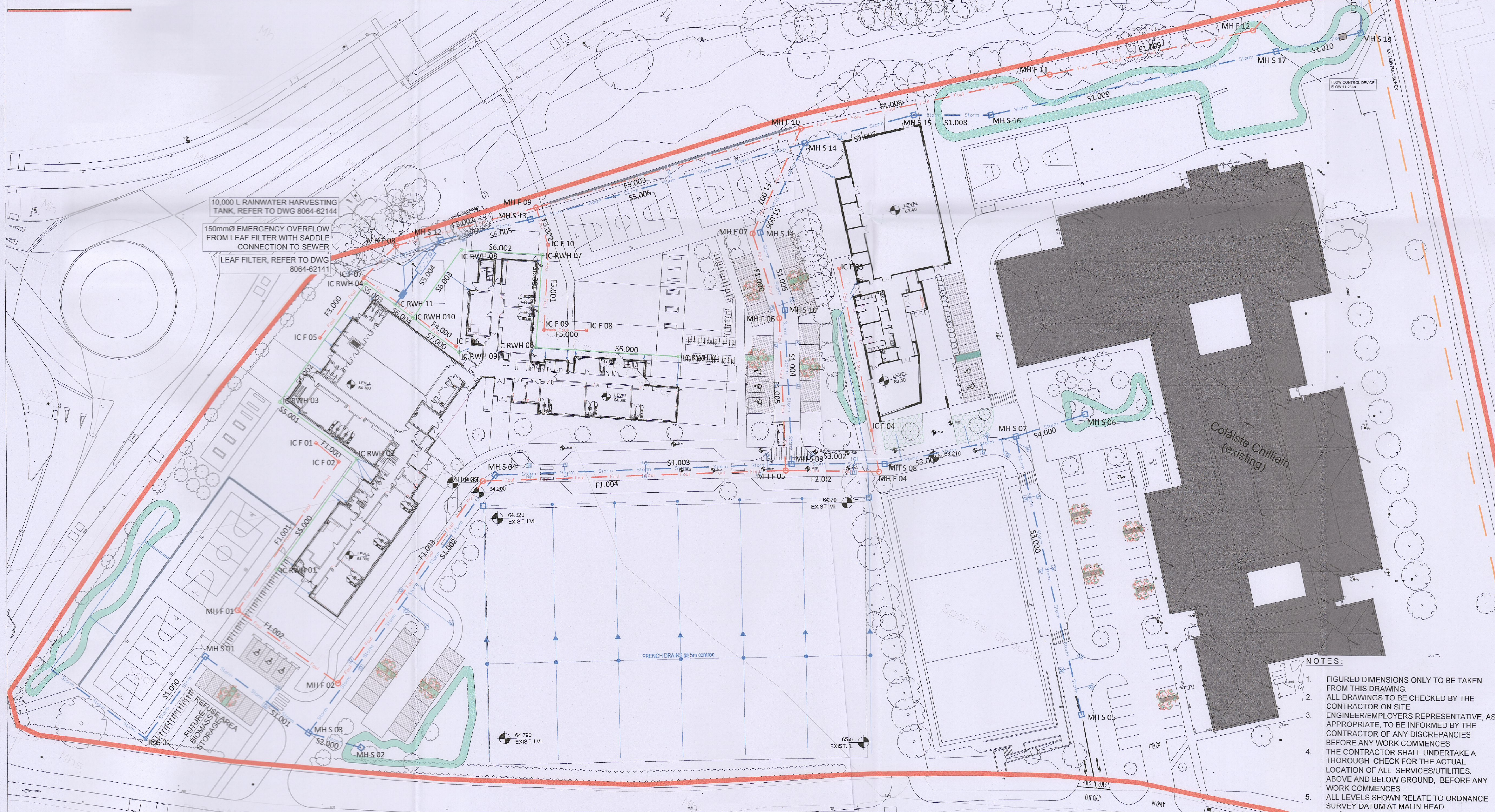


Surface Water											
Pipe Number	Upstream Manhole Label	Manhole (mm)	Cover Level (m)	Invert Level (m)	Manhole Depth (m)	Pipe Cover (m)	Pipe Diameter (mm)	Length (m)	Slope	Downstream Invert level	Downstream Manhole Label
SW 1.000	IC S 01	600 x 600	64.400	63.575	0.825	0.600	225	23.627	39.40	62.975	S 01
SW 1.001	S 01	1200	64.400	62.975	1.425	1.200	225	30.279	200.50	62.824	S 03
SW 2.000	S 02	1200	64.350	62.925	1.425	1.200	225	11.239	111.30	62.824	S 03
SW 1.002	S 03	1200	64.530	62.749	1.781	1.481	300	74.546	300.60	62.501	S 04
SW 1.003	S 04	1200	64.200	62.501	1.699	1.399	300	69.701	200.30	62.153	S 09
SW 3.000	S 05	1200	64.800	62.845	1.955	1.655	300	66.987	200.00	62.510	S 07
SW 4.000	S 06	1200	62.980	61.555	1.425	1.200	225	17.044	274.90	61.493	S 07
SW 3.001	S 07	1200	63.400	61.418	1.982	1.682	300	31.492	200.60	61.261	S 08
SW 3.002	S 08	1200	63.380	61.261	2.119	1.819	300	22.464	198.80	61.148	S 09
SW 1.004	S 09	1200	63.817	60.998	2.819	2.369	450	36.126	199.60	60.817	S 10
SW 1.005	S 10	1200	63.790	60.817	2.973	2.523	450	19.143	199.40	60.721	S 11
SW 1.006	S 11	1200	63.795	60.721	3.074	2.624	450	23.632	200.30	60.603	S 14
SW 5.000	IC RWH 01	600 x 600	64.200	63.575	0.625	0.400	225	31.992	200.00	63.415	IC RWH 02
SW 5.001	IC RWH 02	600 x 600	64.200	63.415	0.785	0.560	225	22.544	200.00	63.302	IC RWH 03
SW 5.002	IC RWH 03	600 x 600	64.200	63.302	0.898	0.673	225	34.187	200.00	63.131	IC RWH 04
SW 5.003	IC RWH 04	600 x 600	64.200	63.131	1.069	0.844	225	8.556	164.00	63.079	IC RWH 11
SW 6.000	IC RWH 05	600 x 600	64.200	63.575	0.625	0.400	225	33.674	200.00	63.407	IC RWH 06
SW 6.001	IC RWH 06	600 x 600	64.200	63.407	0.793	0.568	225	21.667	200.00	63.299	IC RWH 07
SW 6.002	IC RWH 07	600 x 600	64.200	63.298	0.902	0.677	225	18.894	200.00	63.204	IC RWH 08
SW 6.003	IC RWH 08	600 x 600	64.200	63.204	0.996	0.771	225	19.717	200.00	63.105	IC RWH 10
SW 7.000	IC RWH 09	600 x 600	64.200	63.575	0.625	0.400	225	13.689	200.00	63.507	IC RWH 10
SW 6.004	IC RWH 10	600 x 600	64.200	63.105	1.095	0.870	225	5.202	200.00	63.079	IC RWH 11
SW 5.004	IC RWH 11	600 x 600	64.200	63.004	1.196	0.896	300	18.748	199.40	62.910	S 12
SW 5.005	S 12	1200	64.370	62.870	1.500	1.200	300	21.491	298.50	62.798	S 13
SW 5.006	S 13	1200	64.085	62.798	1.287	0.987	300	66.955	300.20	62.575	S 14
SW 1.007	S 14	1350	63.800	60.603	3.197	2.747	450	26.547	100.20	60.338	S 15
SW 1.008	S 15	1350	63.400	60.338	3.062	2.612	450	18.105	109.70	60.173	S 16
SW 1.009	S 16	1350	63.250	60.173	3.077	2.627	450	68.481	100.00	59.488	S 17
SW 1.010	S 17	1350	62.650	59.488	3.162	2.937	225	20.471	200.70	59.386	S 18
SW 1.011	S 18	1200	61.490	59.086	2.404	2.179	225	31.474	200.50	58.929	Ex SW MH1

Foul Water											
Pipe Number	Upstream Manhole Label	Manhole Diameter (mm)	Cover Level (m)	Invert Level (m)	Manhole Depth (m)	Pipe Cover (m)	Pipe Diameter (mm)	Length (m)	Slope	Downstream Invert level	Downstream Manhole Label
FW 1.000	IC F 01	600 x 600	64.200	63.650	0.550	0.400	150	6.906	100.10	63.581	IC F 02
FW 1.001	IC F 02	600 x 600	64.200	63.581	0.619	0.469	150	42.038	100.10	63.161	F 01
FW 1.002	F 01	1200	64.200	63.161	1.039	0.889	150	29.142	100.10	62.870	F 02
FW 1.003	F 02	1200	64.450	62.795	1.655	1.430	225	58.403	200.00	62.503	F 03
FW 1.004	F 03	1200	64.200	62.000	2.200	1.975	225	71.229	200.10	61.644	F 05
FW 2.000	IC F 03	600 x 600	63.300	62.750	0.550	0.400	150	38.678	125.20	62.441	IC F 04
FW 2.001	IC F 04	600 x 600	63.300	62.441	0.859	0.709	150	9.911	125.50	62.362	F 04
FW 2.002	F 04	1200	63.380	62.362	1.018	0.868	150	22.539	100.20	62.137	F 05
FW 1.005	F 05	1200	63.817	61.644	2.173	1.948	225	35.768	135.50	61.380	F 06
FW 1.006	F 06	1200	63.790	61.380	2.410	2.185	225	20.779	135.80	61.227	F 07
FW 1.007	F 07	1200	63.795	61.227	2.568	2.343	225	27.369	199.80	61.090	F 10
FW 3.000	IC F 05	600 x 600	64.200	63.650	0.550	0.400	150	17.254	63.40	63.378	IC F 07
FW 4.000	IC F 06	600 x 600	64.200	63.650	0.550	0.400	150	27.175	99.90	63.378	IC F 07
FW 3.001	IC F 07	600 x 600	64.200	63.378	0.822	0.672	150	10.755	99.60	63.270	F 08
FW 3.002	F 08	1200	64.300	63.195	1.105	0.880	225	34.285	200.50	63.024	F 09
FW 5.000	IC F 08	600 x 600	64.200	63.650	0.550	0.400	150	10.027	100.30	63.550	IC F 09
FW 5.001	IC F 09	600 x 600	64.200	63.550	0.650	0.500	150	19.838	100.20	63.352	IC F 10
FW 5.002	IC F 10	600 x 600	64.200	63.352	0.848	0.698	150	9.310	100.00	63.259	F 09
FW 3.003	F 09	1200	64.085	63.024	1.061	0.836	225	64.945	150.00	62.591	F 10
FW 1.008	F 10	1200	63.800	61.090	2.710	2.485	225	59.816	200.10	60.791	F 11
FW 1.009	F 11	1200	63.500	60.791	2.709	2.484	225	48.814	200.10	60.547	F 12
FW 1.010	F 12	1200	62.900	60.547	2.353	2.128	225	34.935	200.00	60.372	Ex FW MH 2

Cells highlighted Indicate Pipe to be incased in concrete, where the cover is less than 1.2m in Roads, as per detail on DWG 8064-2042



LEGEND:

- PLANNING BOUNDARY: Solid red line
- EXISTING FOUL PIPE: Dashed orange line
- EXISTING FOUL MANHOLE: Yellow circle
- EXISTING SURFACE WATER PIPE: Dashed blue line
- EXISTING SURFACE WATER MANHOLE: Blue square
- PROPOSED SURFACE WATER PIPE: Solid blue line
- PROPOSED SURFACE WATER MANHOLE: Blue square with 'S' label
- PROPOSED DETENTION BASIN: Green rectangle
- PROPOSED GULLY: Blue circle with 'G' label
- GULLY TRAP FOR DOWNPIPES: Blue circle with 'T' label
- PROPOSED 150MM Ø UPVC PERFORATED PIPE: Dashed blue line
- PROPOSED ACCESS JUNCTION: Blue square with 'A' label
- PROPOSED FOUL PIPE: Solid orange line
- PROPOSED FOUL MANHOLE: Red circle
- PROPOSED RAINWATER HARVESTING INFRASTRUCTURE: Green rectangle with 'RH' label
- PROPOSED CHANNEL DRAIN: Green line
- PROPOSED TREE PIT: Green circle with 'TP' label
- PROPOSED PERMEABLE PAVING: Grey hatched area
- PROPOSED SWALE: Green line with 'S' label

PD1	22/03/2023	ISSUED FOR PLANNING	PF	KH
Rev	Date	Description	By	Chkd.

Client: An Roinn Oideachais agus Scileanna
Department of Education and Skills

Project: **DoES ADAPT LOT 6.1 & 6.2 CLONDALKIN**

Title: **PROPOSED DRAINAGE LAYOUT**

Scale @ A1:	1:500				
Prepared by:	P. FANNING	Checked:	K. HIGGINS	Date:	JAN' 2023
Project Director:	BRIAN CARROLL				
Drawing Status:	PLANNING				

TOBIN
CONSULTING ENGINEERS
TOBIN Consulting Engineers,
Block 10-4, Blanchardstown Corporate Park,
Dublin 15, Ireland.
Tel: +353-(0)1-8030406
Fax: +353-(0)1-8030409
e-mail: dublin@tobin.ie
www.tobin.ie

NOTES:

- FIGURED DIMENSIONS ONLY TO BE TAKEN FROM THIS DRAWING.
- ALL DRAWINGS TO BE CHECKED BY THE CONTRACTOR ON SITE.
- ENGINEER/EMPLOYERS REPRESENTATIVE, AS APPROPRIATE, TO BE INFORMED BY THE CONTRACTOR OF ANY DISCREPANCIES BEFORE ANY WORK COMMENCES.
- THE CONTRACTOR SHALL UNDERTAKE A THOROUGH CHECK FOR THE ACTUAL LOCATION OF ALL SERVICES/UTILITIES, ABOVE AND BELOW GROUND, BEFORE ANY WORK COMMENCES.
- ALL LEVELS SHOWN RELATE TO ORDNANCE SURVEY DATUM AT MALIN HEAD.

Drawing No.: **8064-2110 P01**