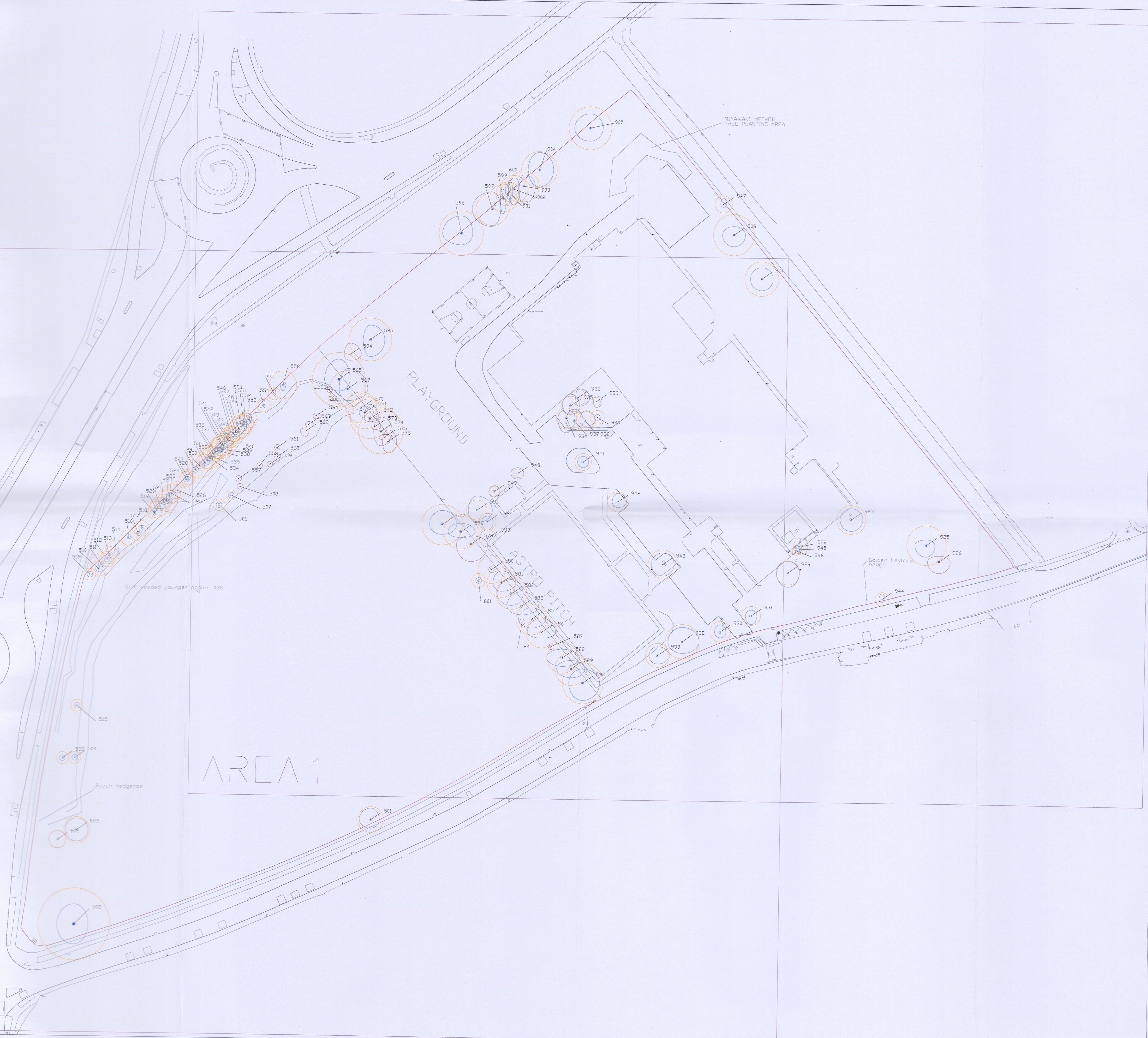




AREA 2

AREA 1



LEGEND

- TREE CONDITION CATEGORIES**
- A TREES OF HIGH VALUE AND QUALITY
 - B TREES OF MODERATE VALUE AND QUALITY
 - C TREES OF LOW QUALITY AND VALUE
 - TREES OF VERY LOW VALUE WHICH SHOULD BE REMOVED FOR REASONS OF SOUND ARBORICULTURAL MANAGEMENT
 - TREE CONSTRAINTS
 - TREE SURVEY BOUNDARY

Note
Drawing to be interpreted with reference to Tree Survey document

Tree constraints shown are calculated from guidelines contained within BS5837 (2012) within dimensions contained within Section 8 of the Tree Survey document. This outline should not be interpreted as the exact extent of root spread however it is considered the optimal area to be retained free of developmental impacts.

Natural and/or man made barriers such as waterlogged soil or buildings may restrict the spread of tree roots. Crown spreads may also prove to be a constraint particularly where crown reduction may not be possible.

The constraints lines shown on this drawing are therefore a guide only. An on-site assessment should be undertaken in the event of any developments being planned within the areas shown for retained trees.

REVISIONS

REV	DATE	DESCRIPTION

PROJECT: COLAISTE CHILLIAN		JOB NO. TCL0002
DRAWING: ARBORICULTURAL ASSESSMENT (KEY PLAN)	DATE: 10/02/23	SCALE: AS SHOWN @ A1
DRAWN BY: NIALL MCBRIDE		NMB INITIALS
STATUS: FOR PLANNING		REVISION
DRAWING NO. 101		

NOTES
Do Not Scale. Use Figured Dimensions Only.
Not for Construction Purposes unless Specifically Mailed.

© THIS DRAWING IS COPYRIGHT OF CMK HORTICULTURE + ARBORICULTURE LTD.

