

Proposed Hotel Development at Site D, Liffey Valley Office Campus, Dublin 22

Verified Photomontages



NOTES AND METHODOLOGY

PROJECT DETAILS

Title: Proposed Hotel Development at Site D, Liffey Valley Office Campus, Dublin 22

Method Statement - Photo-montage production using guidance in The Landscape Institute TGN-06-19 Visual Representation of Development Proposals.

1. Photographs are taken from locations as advised by the planning consultant with a full frame SLR digital camera and prime lens. Photographs are taken using the most appropriate combination of lens focal lengths to ensure that the field of view covers the proposed scheme environment or landscape context. The photographs are taken horizontally with a survey level attached to the camera. The photographic positions are marked (for later surveying), the height of the camera and the focal length of the image recorded.
2. In each photograph, a minimum of 3no. visible fixed points are marked for surveying. These are control points for model alignment within the photograph. All surveying is carried out by a qualified topographical surveyor using Total Station / GPS devices.
3. The photographic positions and the control points are geographically surveyed and this survey is tied in to the site topographical survey supplied by the Architect / client.
4. The buildings are accurately modelled in 3D cad software from cad drawings or BIM model supplied by the Architect. Material finishes are applied to the 3D model and scene element are placed like trees and planting to represent the proposed landscaping.
5. Virtual 3D cameras are positioned according to the survey co-ordinates and the focal length is set to match the photograph. Pitch and rotation are adjusted using the survey control points to align the virtual camera to the photograph. Lighting is set to match the time of day the photograph is taken.
6. The proposed development is output from the 3D software using this camera and the image is then blended with the original photograph to give an accurate image of what the proposed development will look like in its proposed setting.
7. In the event of the development not being visible, the roof line of the development will be outlined in red if re-quested.
8. The document contains:
 - a. Site location map with view locations plotted.
 - b. Photomontage sheet with existing or proposed conditions.
 - c. Reference information including field of view/focal length, range to site / development, date of photograph.

Prepared by Digital Dimensions

Issue Date	06/04/23	17/04/23					
Revision	-						
Status	Draft	Final					

PROFILE

Digital Dimensions are specialists in computer generated visualisations for all forms of planning applications. The company was established in 2000 by John Healy and Jim Manning in Dublin, Ireland. Digital Dimensions is one of Ireland's leading architectural visualisation companies with 20+ years of experience covering a wide range of solutions in the areas of architectural visualisation, environmental design and digital media.



View Location Map

This map is for view location purposes only. Please refer to Architects drawings for site layout and redline boundary.

24mm - 73.74° fov | 208.3% of 50mm | 145.8% of 35mm

390mm wide

35mm - 54.43° fov. | 142.8% of 50mm

267.4mm wide

187.2mm wide

50mm - 39.59° fov | 70% of 35mm | 48% of 24mm

50mm - 39.59° fov | 70% of 35mm | 48% of 24mm

24mm - 73.74° fov

< 24mm / 73.7° | < 35mm / 54.4° | < 50mm / 39.6° | Lens information: Focal Length / Field of View | 50mm / 39.6° > | 35mm / 54.4° > | 24mm / 73.7° >

Location	Description	Photography Date	Field of view	35mm equivalent	Distance to site boundary	Camera model	Reference
						Canon EOS 5DS	

6000x4000px



< 24mm / 73.7° < 35mm / 54.4° < 50mm / 39.6° Lens Information: Focal Length / Field of View 50mm / 39.6° > 35mm / 54.4° > 24mm / 73.7° >

Location	Description	Photography Date	Field of view	35mm equivalent	Distance to site boundary	Camera model	Reference
View Existing		22/03/23	73.7°	24mm	51.8m	Canon EOS 5DS	4959



< 24mm / 73.7° < 35mm / 54.4° < 50mm / 39.6° Lens Information: Focal Length / Field of View 50mm / 39.6° > 35mm / 54.4° > 24mm / 73.7° >

Location	Description	Photography Date	Field of view	35mm equivalent	Distance to site boundary	Camera model	Reference
View 1 Proposed		22/03/23	73.7°	24mm	51.8m	Canon EOS 5DS	4959



< 24mm / 73.7° | < 35mm / 54.4° | < 50mm / 39.6° | Lens Information: Focal Length / Field of View | 50mm / 39.6° > | 35mm / 54.4° > | 24mm / 73.7° >

Location	Description	Photography Date	Field of view	35mm equivalent	Distance to site boundary	Camera model	Reference
View 2 Existing		22/03/23	73.7°	24mm	354.4m	Canon EOS 5DS	5016



< 24mm / 73.7° | < 35mm / 54.4° | < 50mm / 39.6° | Lens Information: Focal Length / Field of View | 50mm / 39.6° > | 35mm / 54.4° > | 24mm / 73.7° >

Location	Description	Photography Date	Field of view	35mm equivalent	Distance to site boundary	Camera model	Reference
View 2 Proposed		22/03/23	73.7°	24mm	354.4m	Canon EOS 5DS	5016



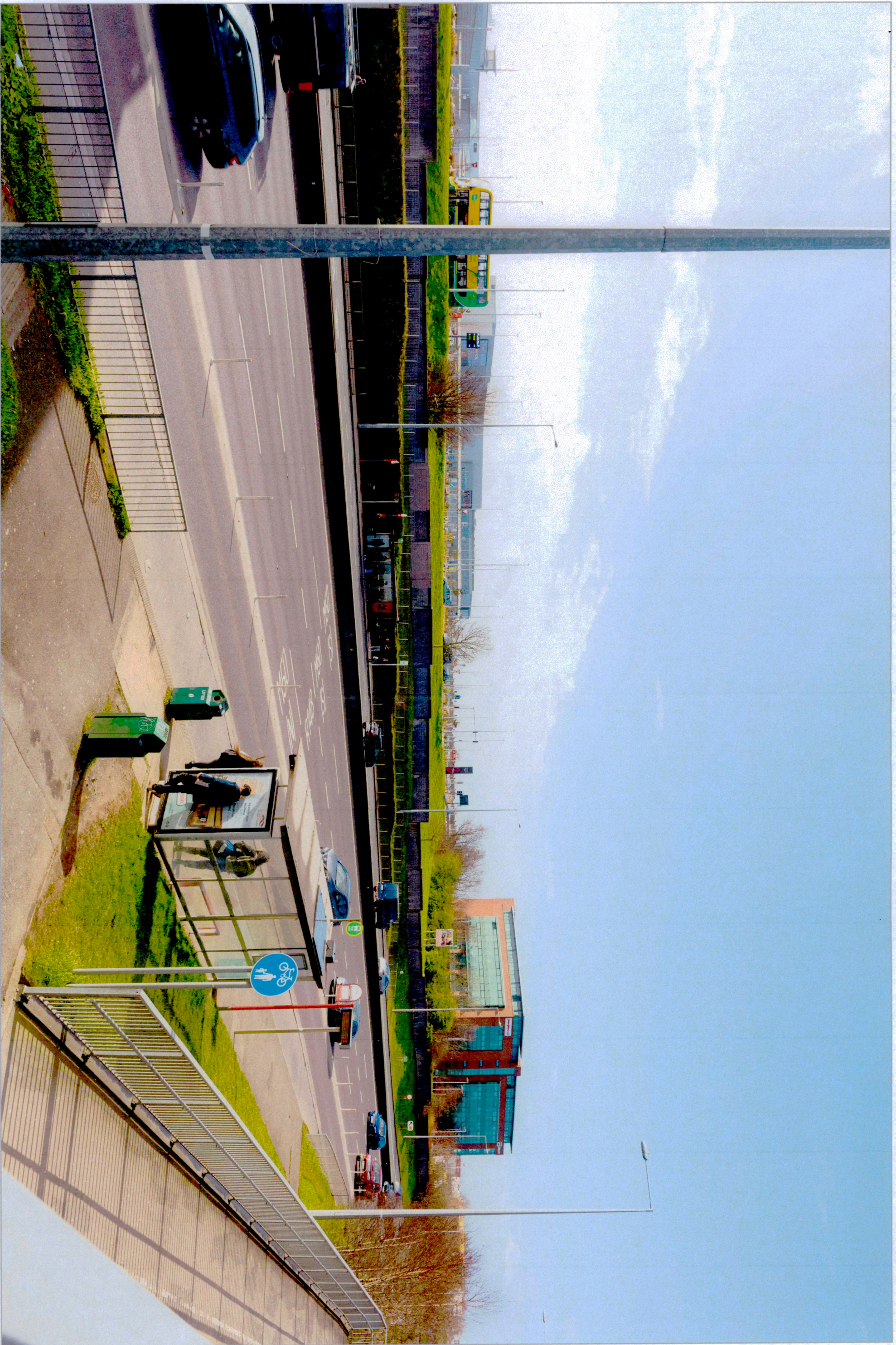
< 24mm / 73.7° | < 35mm / 54.4° | < 50mm / 39.6° | Lens Information: Focal Length / Field of View | 50mm / 39.6° > | 35mm / 54.4° > | 24mm / 73.7° >

Location	Description	Photography Date	Field of view	35mm equivalent	Distance to site boundary	Camera model	Reference
View 3 Existing		22/03/23	73.7°	24mm	334m	Canon EOS 5DS	4993



< 24mm / 73.7° < 35mm / 54.4° < 50mm / 39.6° Lens Information: Focal Length / Field of View 50mm / 39.6° > 35mm / 54.4° > 24mm / 73.7° >

Location	Description	Photography Date	Field of view	35mm equivalent	Distance to site boundary	Camera model	Reference
View 3 Proposed		22/03/23	73.7°	24mm	334m	Canon EOS 5DS	4993



< 24mm / 73.7° < 35mm / 54.4° < 50mm / 39.6° Lens Information: Focal Length / Field of View 50mm / 39.6° > 35mm / 54.4° > 24mm / 73.7° >

Location	Description	Photography Date	Field of view	35mm equivalent	Distance to site boundary	Camera model	Reference
View 4 Existing		22/03/23	73.7°	24mm	283m	Canon EOS 5DS	4987



< 24mm / 73.7° < 35mm / 54.4° < 50mm / 39.6° Lens Information: Focal Length / Field of View 50mm / 39.6° > 35mm / 54.4° > 24mm / 73.7° >

Location	Description	Photography Date	Field of view	35mm equivalent	Distance to site boundary	Camera model	Reference
View 4 Proposed		22/03/23	73.7°	24mm	283m	Canon EOS 5DS	4987