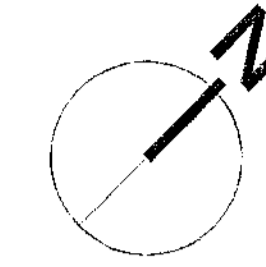
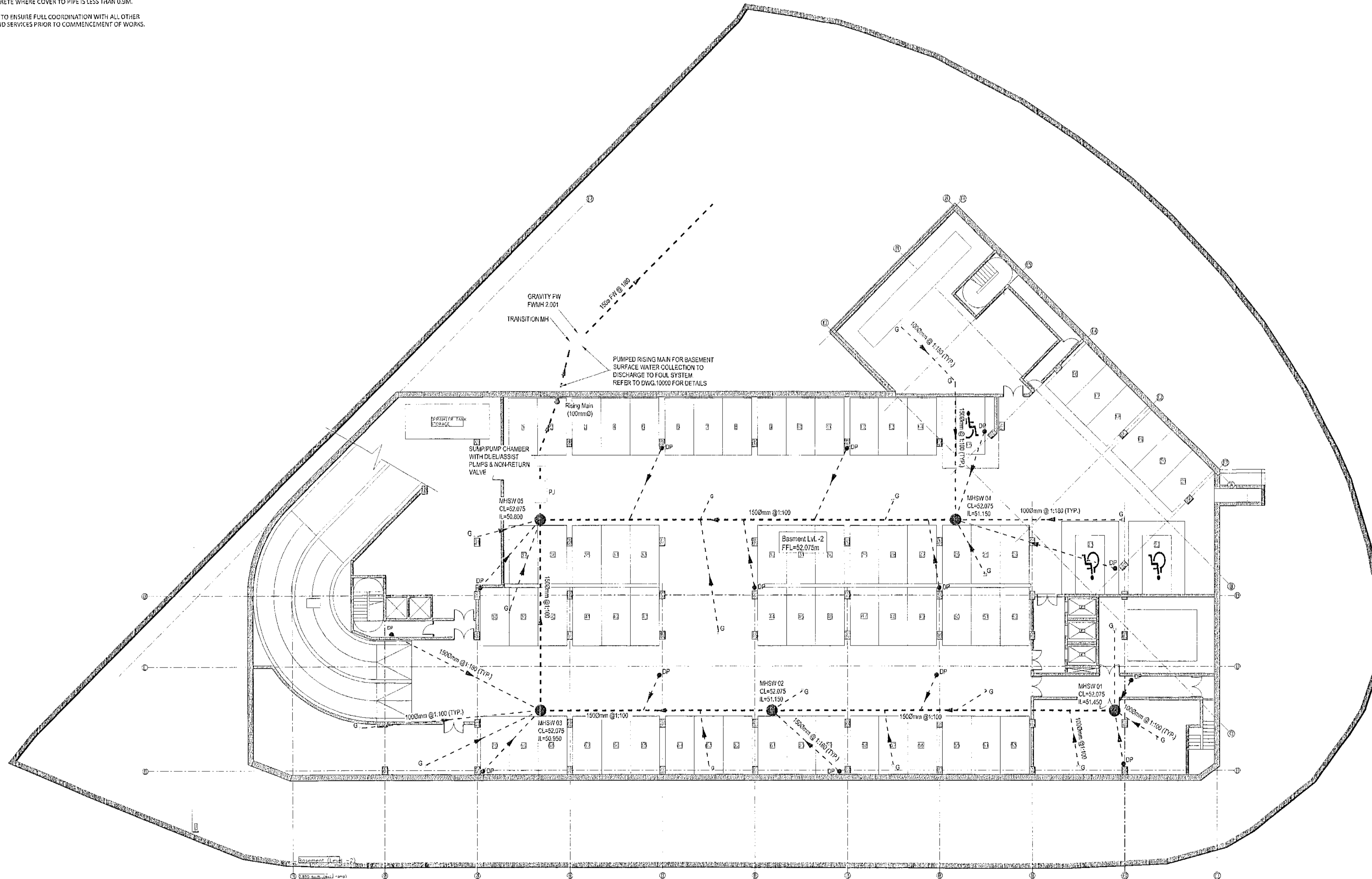


GENERAL NOTES

1. ALL LEVELS IN METRES ABOVE ORDNANCE DATUM.
2. ALL DRAINAGE DETAILS TO BE SUBMITTED AND AGREED WITH SOUTH DUBLIN COUNTY COUNCIL PRIOR TO COMMENCEMENT OF WORKS.
3. CONTRACTOR TO TRACE ALL SERVICES WITHIN SITE BOUNDARY TO ASCERTAIN OUTFALL LOCATIONS OF ALL DRAIN RUNS & LOCATION OF ALL LIVE SERVICES PRIOR TO COMMENCEMENT OF SITE CLEARANCE WORKS.
4. CONTRACTOR TO AGREE ANY DIVERSIONS WHERE NECESSARY WITH CONSULTANTS / LOCAL AUTHORITY.
5. INVERT & COVER LEVELS ARE INDICATIVE ONLY. DRAIN RUNS & LEVELS ARE TO BE AGREED WITH SOUTH DUBLIN COUNTY COUNCIL PRIOR TO COMMENCEMENT OF WORKS.
6. PIPES LAID IN ROADWAYS TO BE ENCASED IN 150MM CONCRETE WHERE COVER TO PIPE IS LESS THAN 1.2M. PIPES LAID IN OPEN SPACES TO BE ENCASED IN 150MM CONCRETE WHERE COVER TO PIPE IS LESS THAN 0.9M.
7. CONTRACTOR TO ENSURE FULL COORDINATION WITH ALL OTHER UNDERGROUND SERVICES PRIOR TO COMMENCEMENT OF WORKS.



CIVIL LEGEND	
Ex. SURFACE WATER
SURFACE WATER
Ex. WASTE WATER	-----
WASTE WATER	-----
FOUL ACCESS JUNCTION	-A-
SURFACE WATER INSPECTION CHAMBER	○RC
RAINWATER PIPE	○RWP
SOIL VENT PIPE	○SVP
ROAD GULLEY	○RG
BACK INLET GULLEY TRAP	○BET
FOUL RODDING EYE	○FE
SURFACE RODDING EYE	○RF
GULLEY TRAP	○GT
Ex. WATERMAIN	-----
WATERMAIN	-----
SLUICE VALVE	○SV
STOP COCK	○SC
AIR VALVE	○AV
FIRE HYDRANT	○FH
MAGNETIC FLOW WATER METER	○MFM
IRRIGATION VALVE	○IV
TRUST BLOCK	○TB
BASEMENT OUTLINE	-----



Rev	Sts	Description	Date
P01	S2	Issued for Information	14.11.22
P02	S2	Issued for Planning	08.12.22
P03	S2	Issued In Response To RFI	18.04.23

MMOS The Chapel,
Blackrock House,
Blackrock Road
Cork, T12 KRK7
Tel: 353 21 4317608

PROJECT
Hotel Development, Site D,
Liffey Valley

CLIENT
Winmar Developments Unlimited
Company

TITLE
Basement Level - 2 Surface Water
Run Off & Collection G.A

DRAWN BY: TOC CHECKED BY: DOS APPROVED BY: DOS

SCALE: 1:200 (A1) PROJECT NUMBER: 22265

DOCUMENT REFERENCE: 22265-MMS-ZZ-B1-DR-C-10003 STATUS: S2

PROJECT-ORIGINATOR-ZONE-LEVEL-TYPE-DISCIPLINE-NUMBER: P03

Basement Level 2
Scale 1:200 (A1)