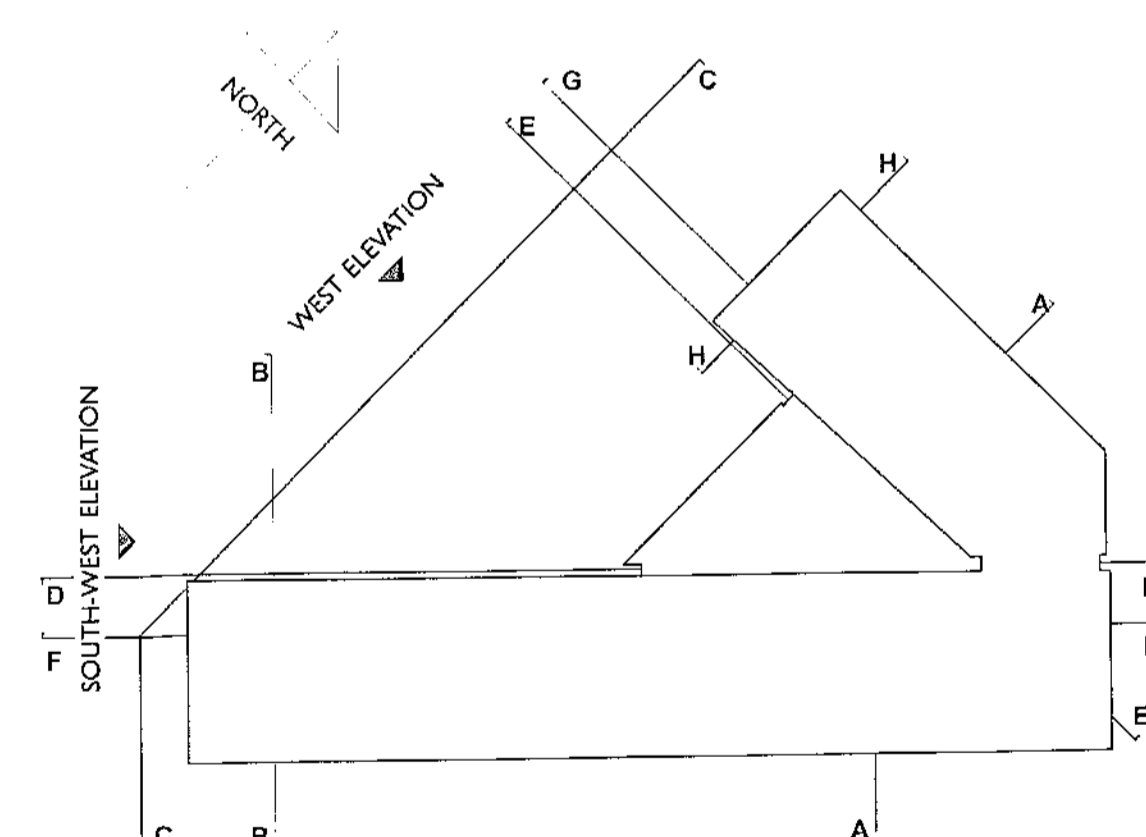


WEST ELEVATION

EXTENT OF BASEMENT LEVEL -1
EXTENT OF BASEMENT LEVEL -2



KEY PLAN:

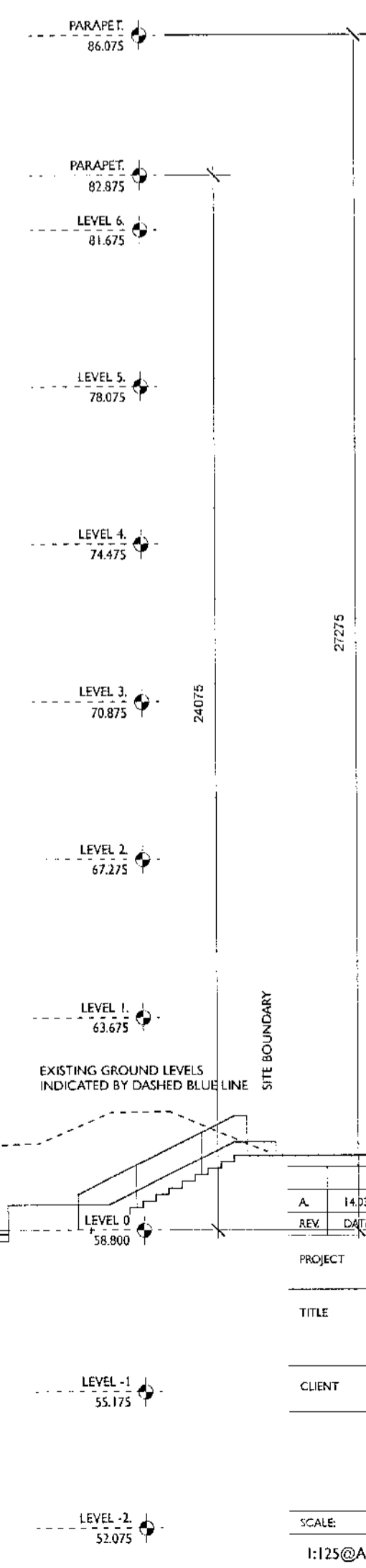
EXTERNAL FINISHES SPECIFICATION:

- 1 CLAY BRICK CLADDING TO SELECTED COLOUR
- 2 STONE / CERAMIC CLADDING TO SELECTED COLOUR
- 3 ALUMINIUM CURTAIN WALLING / WINDOW SYSTEM TO SELECTED COLOUR
- 4 METAL CLADDING TO SELECTED COLOUR
- 5 ALUMINIUM CURTAIN WALLING TO ENTRANCE FOYER COMPLETE WITH STAINLESS STEEL CANOPY
- 6 FLOORLIGHT TO ENTRANCE FOYER
- 7 GLAZED BALUSTRADING
- 8 PREFINISHED RENDER TO FAÇONRY WALL
- 9 WALL MOUNTED SIGNAGE, TO CONSIST OF: PRE-INSTALLED METAL BACK-LIT HOTEL LOGO (SIGNAL MARK 1.8M DIA. HOTEL NAME SIGN IN METAL LETTERS TO FORM HOTEL NAME, MADE AS PRE-FINISHED METAL BACK-LIT LETTERS WITH BACK-LIT HALED EFFECT LIGHTING)



SOUTH-WEST ELEVATION

BASEMENT NOT INDICATED



PLANNING DRAWING; 14.03.2023

REV.	DATE	DESCRIPTION
A	14.03.2023	REVISED TO AI SUBMISSION

PROJECT: SITE D, LIFFEY VALLEY, DUBLIN 22.

TITLE: PLANNING DRAWING; WEST & SOUTH-WEST ELEVATIONS

CLIENT: WINMAR DEVELOPMENTS UNLIMITED COMPANY.

EMD Architects
107 Ludford Road, Ballinteer, Dublin 16, Ireland
t: +353 1 2927948 f: +353 1 2965011 e: info@emdarcs.com

SCALE	DATE	DRG. NO.
1:125@A1/1:500@A3	Oct. 2022	P - 12A