

Product Specification
Josta 2-tier High Capacity Rack

Description
 The 2-tier racks are designed to get the maximum number of bikes into a limited space, in a safe, easy to use way. There are many unique features of the Josta racks, including the low, easy to use handles, the clever, patented way the bikes are held on the racks, and the general ease of use. There are many unique features of the Josta racks, including the low, easy to use handles, the clever, patented way the bikes are held on the racks, and the general ease of use. They are also designed for a long, tough life of constant heavy use, with low maintenance. However, the most important factor is always safety, and the Josta racks are very safe to use. This is a particularly important feature for heavy bikes.

Features

- Double the capacity of bicycle storage spaces
- Easy and safe to use
- Space efficient
- Flexible and adaptable
- Heat and organised
- Individual racking - one bike per space
- Low maintenance
- Patented gripping system holds bike securely
- Maximises cycle parking spaces
- BREEM compliant
- Framework can be coloured in any standard RAL colour

Construction
 This Rack is made from pre-galvanised and mild steel, the framework can be powder-coated in any RAL colour.

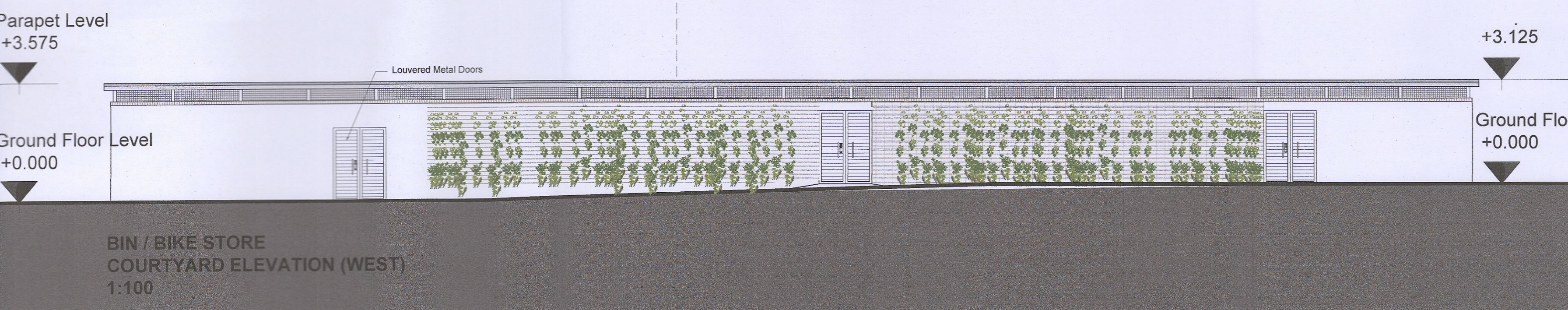
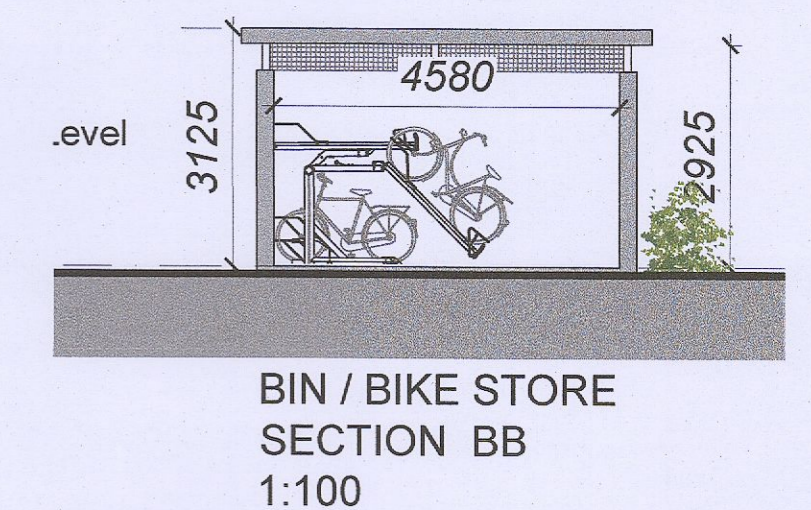
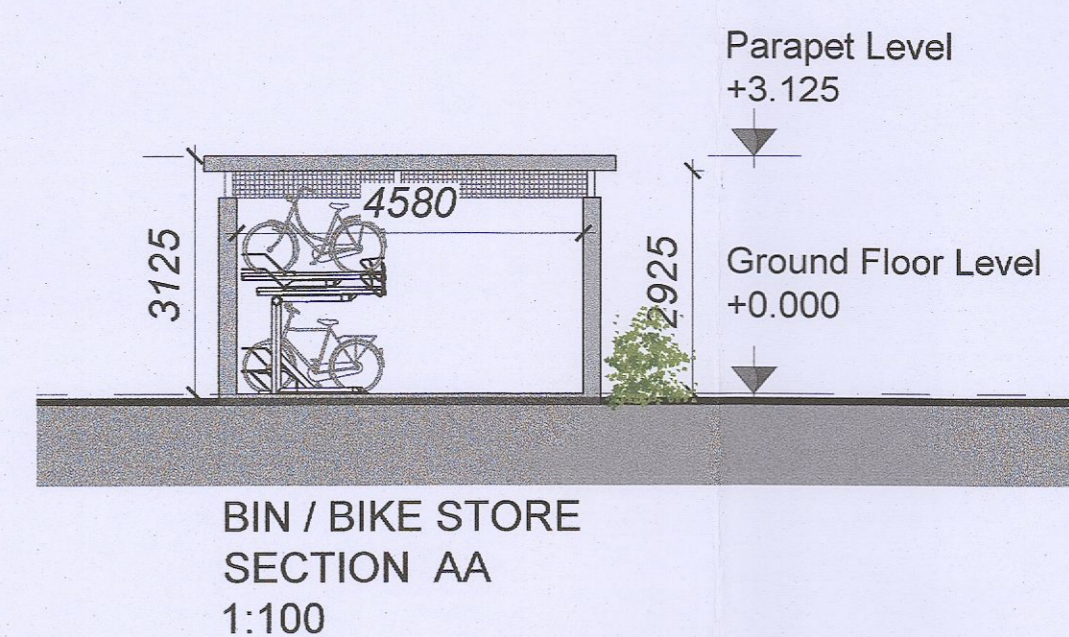
Dimensions

- A minimum headroom of 2600mm is required for maximum capacity.
- 300mm to any adjoining side wall.
- Minimum of 400mm centres (450mm recommended).
- Allow 2000mm for the rack itself, plus a minimum of 1700mm in front for access.
- The racks can also be installed from a control spine. For this option, please leave 2000mm for access on both sides. The 2-slotted unit is then 3100mm wide.
- Racks can also be installed at a 45 or 35 degree angle to minimise space.

GENERAL NOTES

THIS DRAWING TO BE READ IN CONJUNCTION WITH ARCHITECT'S DRAWINGS, CONSULTANT ENGINEER'S DRAWINGS AND SPECIFICATIONS & LANDSCAPE ARCHITECT'S DRAWINGS
 REFER TO ARCHITECT'S SITE PLAN PL02 FOR NORTH ORIENTATION.
 LEVELS GIVEN ON HOUSE TYPE DRAWINGS ARE GIVEN TO A LOCAL ABSOLUTE ZERO LEVEL. FOR SPECIFIC LEVELS DEPENDING ON INDIVIDUAL UNIT LOCATION, REFER TO ARCHITECT'S CONTEXT SECTIONS AND ENGINEER'S DRAWINGS WHERE LEVELS ARE ARE ALL GIVEN IN RELATION TO LAND SURVEYOR'S BENCHMARK BASED ON MALIN HEAD DATUM LEVEL.

- NOTES ON FINISHES:**
- ROOF:** FLAT ROOF TO BE FINISHED IN SARNAFIL OR APPROVED EQUIVALENT.
 - WALLS:** SELECTED BRICKWORK WHERE INDICATED OTHERWISE PAINTED SAND / CEMENT RENDER OR SELF COLOURED RENDER.
 - JOINERY:** ALL WINDOWS AND DOORS, FRAMES AND LEAVES, TO BE ALUMINIUM POWDER-COATED TO APPROVED COLOUR OR UPVC OR PAINTED TIMBER TO APPROVED COLOUR. OBSCURE GLAZING WHERE INDICATED TO SENSITIVE WINDOWS.
 - RAINWATER GOODS:** GUTTERS, DOWNPIPES, AND FIXINGS TO BE UPVC OR ALUMINIUM POWDER COATED TO SELECTED COLOUR TO MATCH ROOF SLATES.
- ALL MATERIALS TO BE AGREED AT COMPLIANCE STAGE



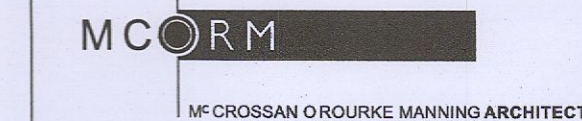
NOTES:

DO NOT SCALE FROM DRAWINGS. WORK TO FIGURED DIMENSIONS ONLY. ARCHITECT TO BE NOTIFIED OF ALL DISCREPANCIES.

FURTHER INFORMATION

REVISIONS			No.
DATE	DESCRIPTION		A
ARP 23	SPECIFICATION FOR 2 TIER BIKE STORAGE SYSTEM ADDED.		A

PROJECT TITLE		DATE	DRAWN BY
CLONBURRIS PHASE T3		Nov22	PK
DRAWING TITLE		SCALE	REVISION
BIN AND BIKE STORES		1:200@A1	A
JOB NO.	DRAWING NO.		
22005	PL010		



1 Glebe Street, Dublin 8, D08 A8F7, Ireland
 Tel: 01-4788700 Fax: 01-4788711 E-Mail: arch@mcorm.com