



Existing scrub vegetation comprising mainly gorse on the adjoining slopes.

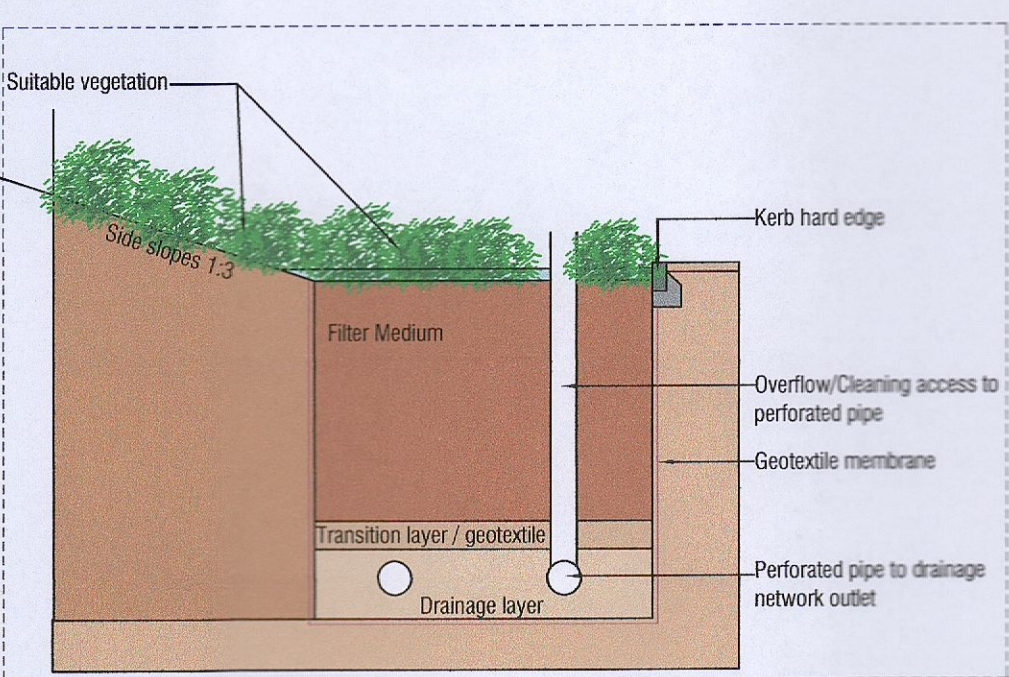
Proposed mixed native hedgerow planting to be established along the site boundaries to integrate development into the landscape.

Proposed mixed native shrub planting pockets to be established on the existing slope along the contours behind the dwelling to provide integration of levels and screening. This planting is also a biodiversity enhancement measure.

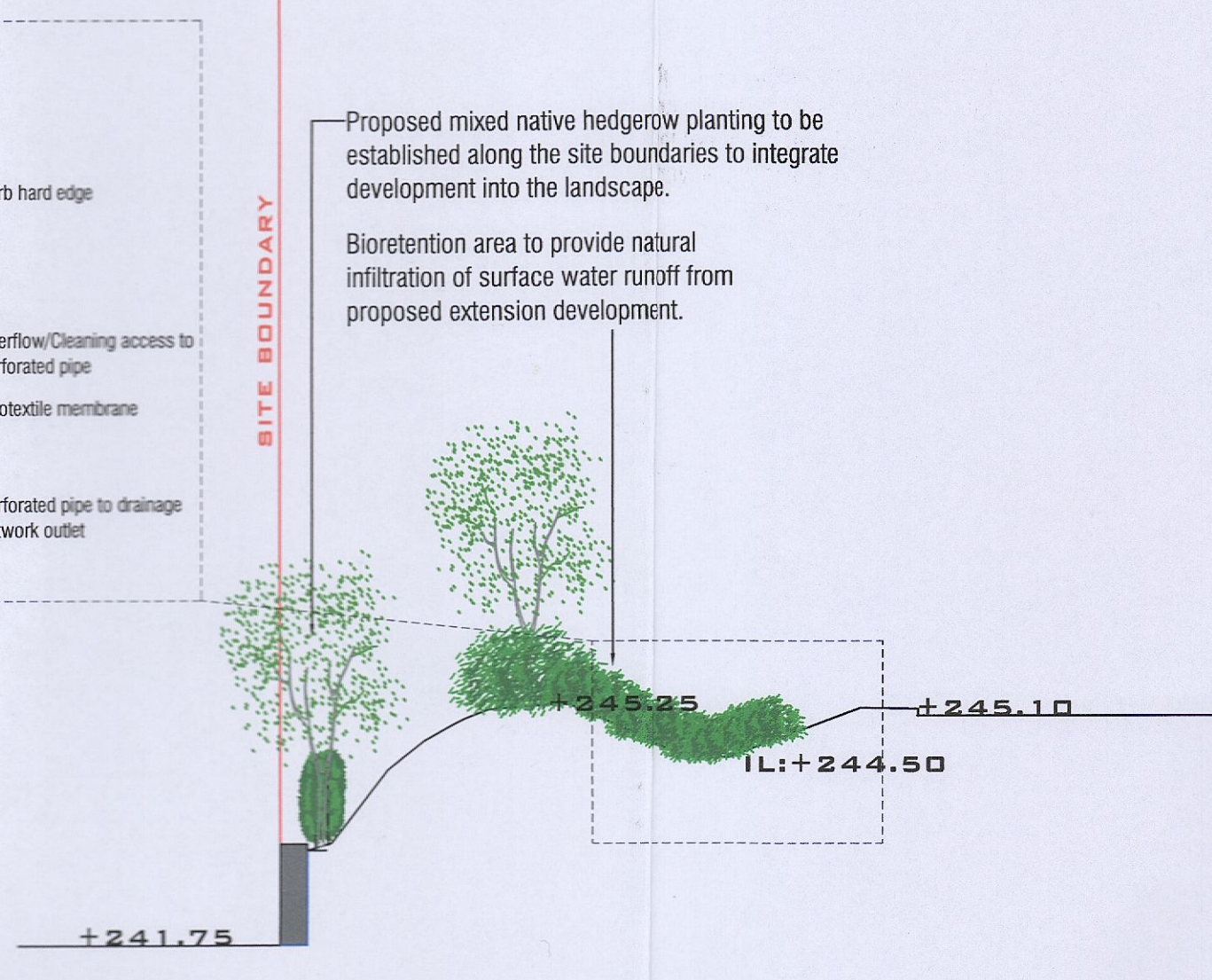
Proposed wildflower/grass mix to be provided as surface vegetation on the steep incline.

Key to Landscape Treatments	
	<b>EXISTING TREES &amp; HEDGEROW PLANTING:</b> On adjoining lands. To be retained and protected during the course of the works where they overhang the site.
	<b>EXISTING SCRUB:</b> Comprising gorse and scrub vegetation.
	<b>EXISTING TARMAC SURFACE</b>
	<b>EXISTING GRAVEL SURFACE</b>
	<b>EXISTING LAWN</b>
	<b>PROPOSED TREE PLANTING</b> 9 No. Betula pendula, 14-16cm girth, rb.
	<b>PROPOSED TREE PLANTING</b> 7 No. Prunus avium, 14-16cm girth, rb.
	<b>PROPOSED TREE PLANTING</b> 8 No. Sorbus aucuparia, 14-16cm girth, rb.
	<b>PROPOSED HEDGEROW PLANTING</b> 15% Crataegus monogyna, 60-90cm br at 250mm centres 10% Eonymus europaeus, 60-90cm br at 250mm centres 15% Malus sylvestris, 60-90cm br at 250mm centres 20% Rosa rugosa, 60-90cm br at 250mm centres 15% Prunus avium, 60-90cm br at 250mm centres 15% Sorbus aucuparia, 60-90cm br at 250mm centres 5% Sambucus nigra, 60-90cm br at 250mm centres 5% Ilex aquifolium, 2L, cp at 250mm centres
	<b>PROPOSED NATIVE SHRUB PLANTING MIX:</b> (850 No. Total Plants) <b>Understorey &amp; Fringe: High Shrubs (64%)</b> 10% Corylus avellana, 1+2 60-90cm BR 12% Crataegus monogyna, 1+1 60-90cm BR 3% Ilex aquifolium, 2L 40-60cm CG 5% Salix cinerea, 0+1 60-120cm BR 5% Salix caprea, 0+1 60-120cm BR 7% Sambucus nigra, 1+1 60-90cm BR 12% Sorbus aucuparia, 1+1 60-90cm BR <b>Understorey &amp; Fringe: Lower Shrubs (46%)</b> 10% Eonymus europaeus, 1+2 60-90cm BR 12% Prunus spinosa, 1+1 60-90cm BR 14% Rosa carolina, 1+1 60-90cm BR 10% Viburnum opulus, 1+1 60-90cm BR In single species blocks at 1 sq.m. All blocks to be proportionately spaced through the area to be planted.
	<b>PROPOSED BIO-RETENTION PLANTING</b> <b>Outer edges of Bio-Retention Zone:</b> Corylus avellana, 60-90cm br Viburnum opulus, 60-90cm br Frangula alnus, 60-90cm br <b>Inner portions of Bio-Retention Zone:</b> Iris pseudacorus, 2L, cp Galium palustre, 2L, cp Glyceria hibernica, 2L, cp Persicaria amphibia, 2L, cp In single species blocks at 1 sq.m. All blocks to be proportionately spaced through the area to be planted.
	<b>PROPOSED WET GRASSLAND MIX</b> 10% Creeping Bent 40% Cheving Fescue 10% Yorkshire Fog 40% Red Fescue at 35-50g/square metre.
	<b>PROPOSED WILDFLOWER GRASS MIX</b> MN02 (or similar from Design By Nature) Birdfoot Trefoil, Black Medick, Bladder Campion, Bladder Campion, Corn Marigold, Corn Poppy, Comcockle, Cowslip, Devil's Bit Scabious, Eyebright, Meadow Buttercup, Fleabane, Lesser Knapweed, Meadowsweet, Ox-eye Daisy, Purple Loosetire, Ragged Robin, Red Clover, Ribwort Plantain, Selfheal, St Johnswort, Water Avena, Woodwort, Wild Angelica, Yarrow, Yellow Agrimony, Yellow Rattle, at 1.5g/square metre.
	<b>PROPOSED STOCK PROOF FENCE</b>

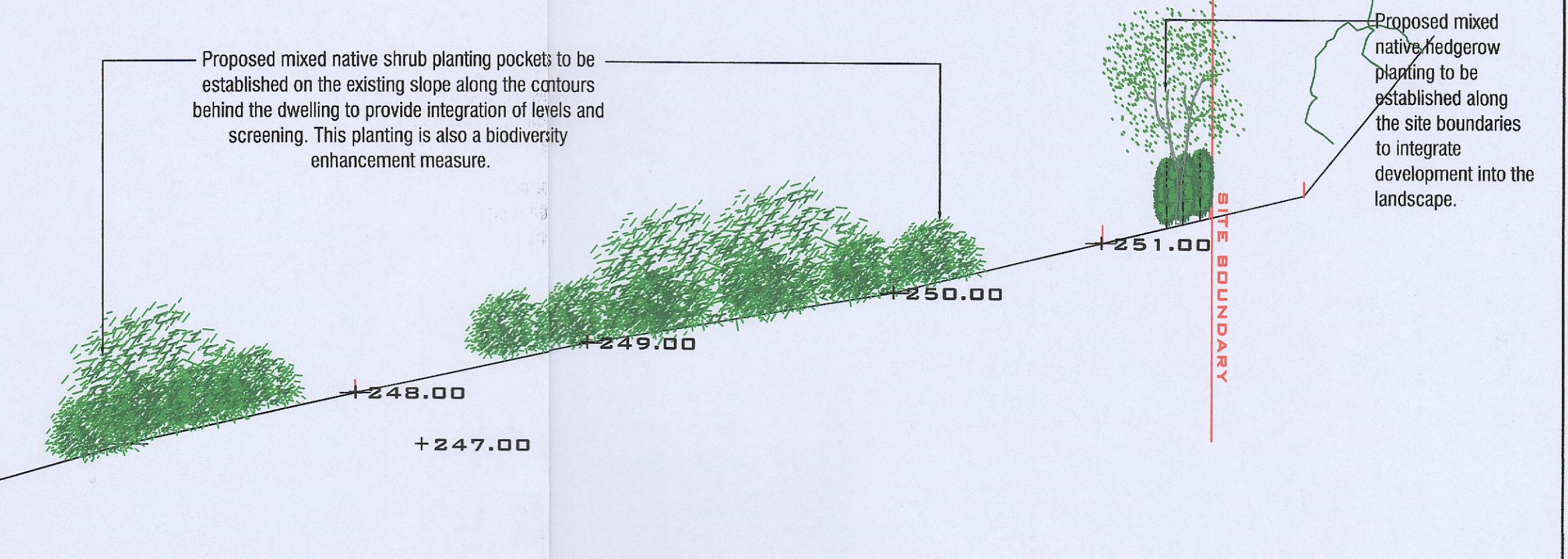
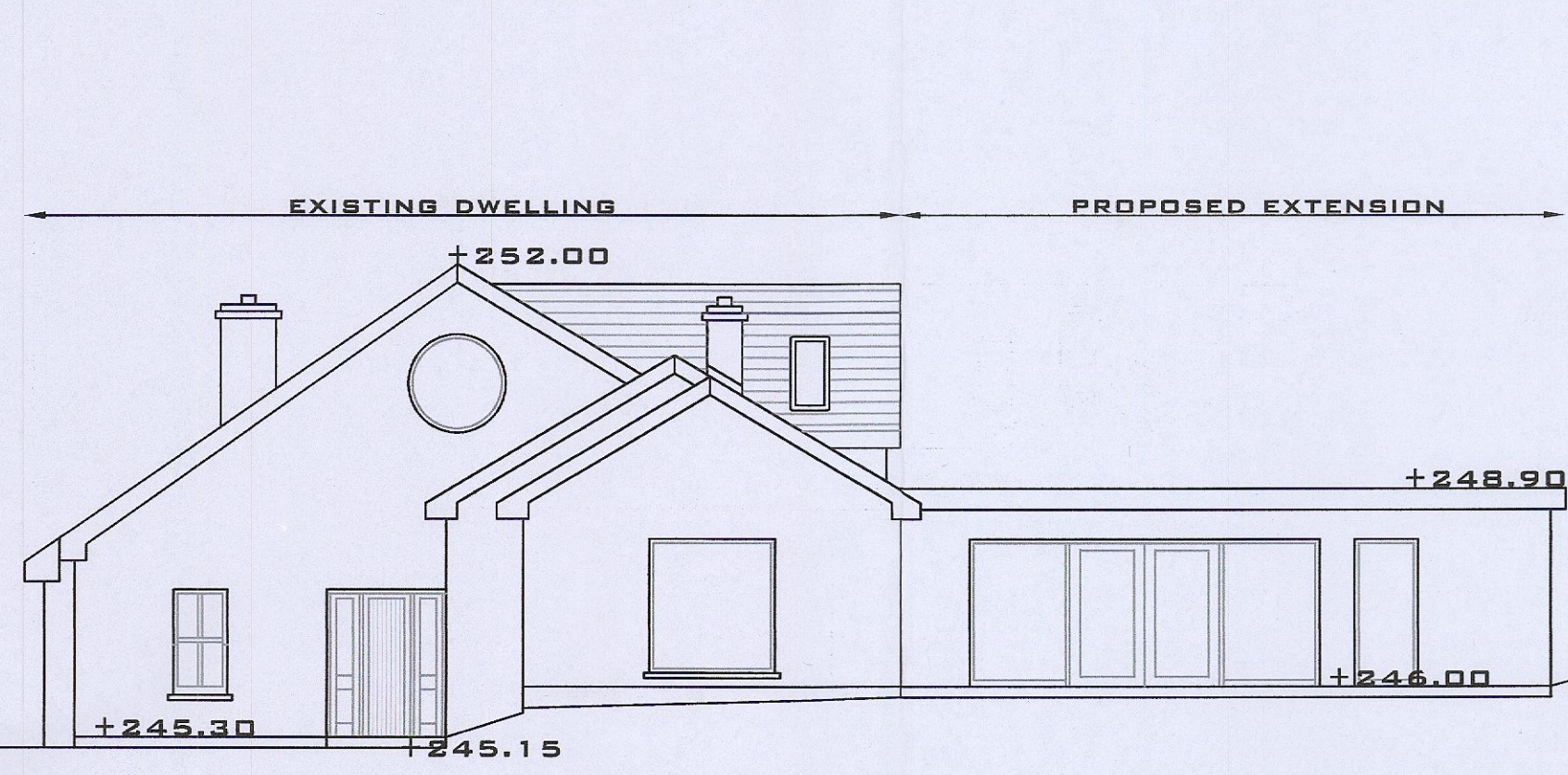
**Landscape Plan**  
Scale 1:250



**Bioretention Detail**  
NTS



**Section A**  
Scale 1:100



No.	Revision	Date	By	Project Title	
				PROPOSED DEVELOPMENT, GLENSIDE HOUSE, GLASSAMUCKY, BOHERNABREENA, DUBLIN 24.	
				01	
BALLINAFAGH PROSPEROUS NAAS CO. KILDARE M: 086 851 9296 E: info@landmarkdesigns.ie				LANDSCAPE DESIGN	
Designed:	GWEN TIERNEY Landscape Architect.	Status:	PLANNING	Scale:	1:250
Date:	05.04.2023	Job No:	PT26	Rev:	Client:
					PETER LAWLOR