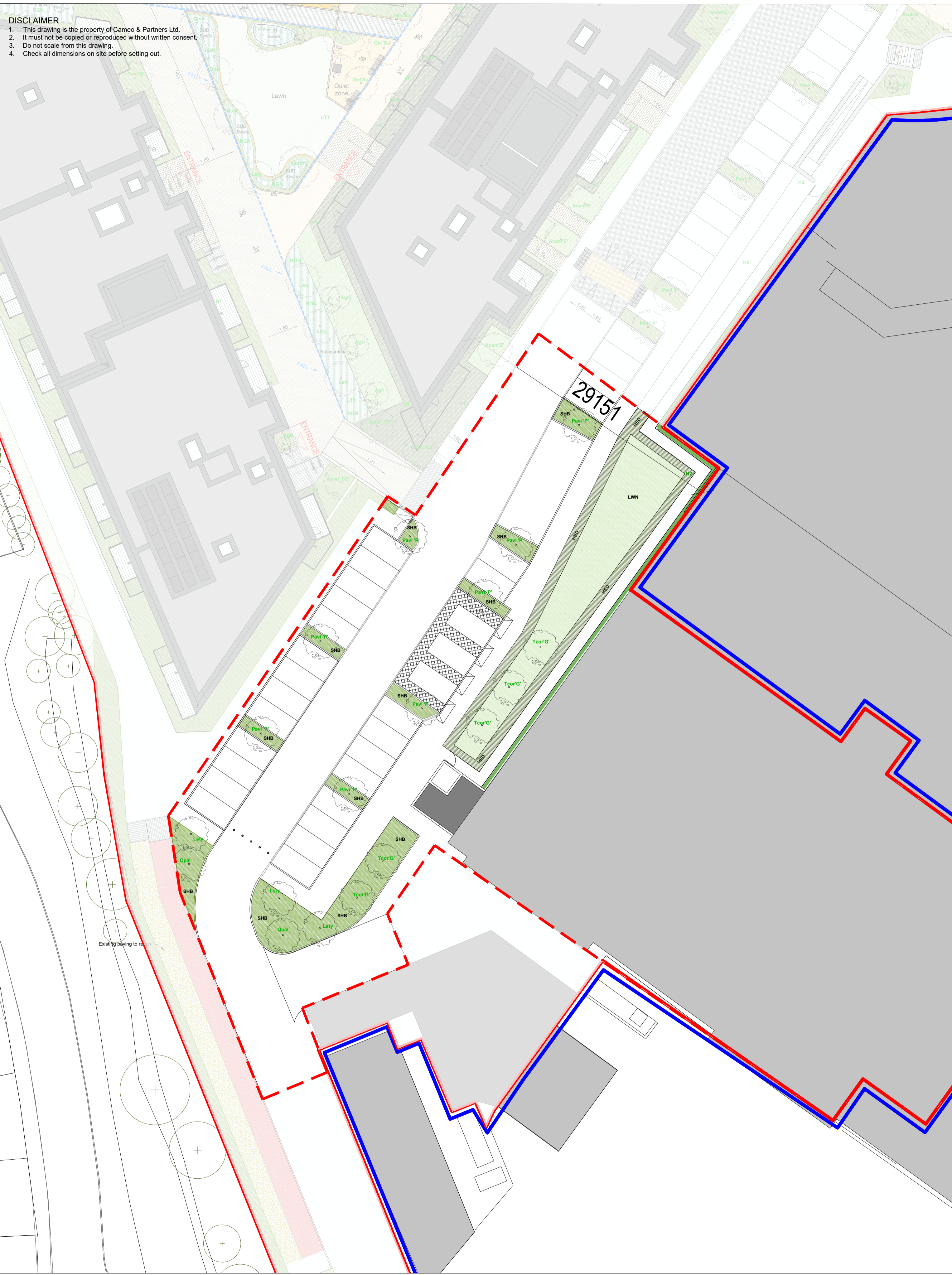


DISCLAIMER
 1. This drawing is the property of Cameo & Partners Ltd.
 2. It must not be copied or reproduced without written consent.
 3. Do not scale from this drawing.
 4. Check all dimensions on site before setting out.



PLANT SCHEDULE - CITYWEST DUBLIN C0143 SCH
 14/02/2023



Code	Species	Common Name	Root Type	Form	Girth (cm)	Height (cm)	Spacing	Total number of plants	Notes
Pavi'P'	Prunus avium 'Plena'	Ornamental Cherry	airpot	specimen tree, 2.5m clear stem	25-30 cm	500-600	as shown	8	RB; semi-mature; 2m clear stem
Lsty	Liquidambar styraciflua 'Worpleston'	Sweetgum Tree	airpot	specimen tree, 2.5m clear stem	25-30 cm	500-600	as shown	3	RB; semi-mature; 2m clear stem
Qpal	Quercus palustris	Pin Oak	airpot	specimen tree, multistem, 2.5m clear stem	n/a	500-600	as shown	2	RB; multi stem: umbrella shape, minimum 3 branches
Tcor'G'	Tilia cordata 'Greenspire'	Small-leaved Lime	airpot	specimen tree, 2.5m clear stem	25-30 cm	500-600	as shown	5	RB; semi-mature; 2m clear stem
TOTAL TREES								18	

Code	Species	Common Name	Root Condition	Container Size	Size (cm) H/W	Spacing	Density /m2	Area (m2)	Mix%	Total number of bags	Notes
H1-Mix	Mixed native hedge	Hawthorn, Hazel and Field Maple Mix	Readybag	35x100cm	80-100	staggered, two rows	bag/m	85	100	85	

Code	Species	Common Name	Root Condition	Container Size	Size (cm) H/W	Spacing	Density /m2	Area (m2)	Mix%	Total number of plants	Notes
								Total		160	

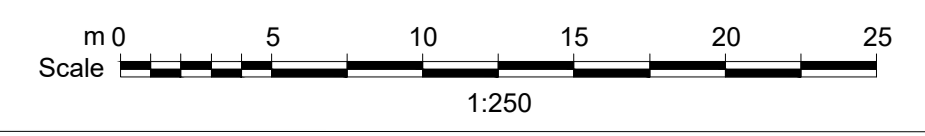
Code	Species	Common Name	Root Condition	Container Size	Size (cm) H/W	Spacing	Density /m2	Area (m2)	Mix%	Total number of plants	Notes
S-CsFla	Cornus sericea 'Flaviramea'	Dogwood	CG	5L	70cm+ high	staggered	7	16	10%	112	Arranged in informal drifts of 3,5,7 plants throughout the planting area
S-Csto	Cornus stolonifera; Kelsey	Dogwood	CG	5L	30cm+ high	staggered	7	16	10%	112	
EUO for 'EG'	Euonymus fortunei 'Emerald Gaiety'		CG	5L	30cm+ high	staggered	7	16	10%	112	
LON niti 'E'	Lonicera nitida 'Elegant'	Box Honeysuckle	CG	5L	30cm+ high	staggered	7	16	10%	112	
S-Ptob	Pittosporum tobira 'Nanum'	Japanese mock orange	CG	5L	30cm+ high	staggered	7	16	10%	112	
P-PLau	Prunus laurocerasus 'Otto Luyken'	Compact Laurel	CG	5L	30cm+ high	staggered	7	16	10%	112	
S-Scon	Sarcococca confusa sweet box	Sweet box	CG	5L	30cm+ high	staggered	7	16	10%	112	
S-SJap	Spiraea japonica 'Albiflora'	White Japanese spiraea	CG	5L	50cm+ high	staggered	7	16	10%	112	
S-Sso	Sorbaria sorbifolia 'Sem'	sorbaria	CG	5L	30cm+ high	staggered	7	16	10%	112	
S-VopC	Viburnum opulus 'Compactum'	compact guelders rose	CG	5L	30cm+ high	staggered	7	16	10%	112	

Code	Species	Area (m2)	Density
LT1	Germinal Ireland Ltd. Product: Landscape Mix Strong creeping red fescue 50% Perennial ryegrass 50%	160	30g/m2 (120 kg/acre)

SOFT LANDSCAPE

- Proposed Semi-Mature Tree**
 Product: Refer to Planting Schedule
 Supplier: Van den Brink or Equal Approved
 Size/Colour: Typically 25-30cm grth, RB.
- Proposed Hedge**
 Product: Refer to Planting Schedule
 Supplier: TBC or Equal Approved
 Size/Colour: 100-150cm high, branched, dis. no. per lin.m.
- Proposed Shrub Planting**
 Product: Refer to Planting Schedule
 Supplier: TBC or Equal Approved
- Proposed Lawn**
 Product: Quality Lawn Turf
 Supplier: Robson Mediation or Equal Approved

rev	details	by	date
00	Issue for planning compliance		HM 14.02.2023



Project
 Citywest Drive, Dublin

Drawing
 Planting Plan

Scale	Date	Checked By	Drawn By
1:250@A0	14.02.23	MM	HM
Drawing No.			Revision
C0143 L3000			00
Purpose of Issue: P = design information / P = planning / T = tender / C = construction / B = as built Drawing sheet size - A0			