

ADAMSTOWN BOULEVARD DEVELOPMENT:

ADAMSTOWN BOULEVARD PHASE 1

SDCC REG. REF. SDZ17A/0002

SUBMISSION ON COMPLIANCE WITH CONDITION No. 15.C.(iv)

Natural and Accessible Play:

- The water play unit is designed for use in a sand pit. An enclosed area is required to keep dogs out.
 - Play item details (to be agreed)
 - Consider a ramp to allow access for wheelchair and ride on mower to access the inside of the oval enclosure within the pocket park.
- The applicant should contact the Public Realm Department to agree the above Landscape Details.



NOTE
 ALL DIMENSIONS TO BE CHECKED ON SITE
 NO DIMENSIONS TO BE SCALED FROM THIS DRAWING
 THIS DRAWING IS TO BE READ IN CONJUNCTION WITH
 RELEVANT CONSULTANTS DRAWINGS
 NO PART OF THIS DOCUMENT MAY BE REPRODUCED OR
 TRANSMITTED IN ANY FORM OR STORED IN ANY RETRIEVAL
 SYSTEM OF ANY NATURE WITHOUT THE WRITTEN PERMISSION
 OF THE LANDSCAPE ARCHITECT AS COPYRIGHT HOLDER EXCEPT
 AS AGREED FOR USE ON THE PROJECT FOR WHICH THE
 DOCUMENT WAS ORIGINALLY ISSUED.
 FOR DRAWING INDEX, GENERAL NOTES, REFER TO
 DWG L1-001

CLIENT:
ADAMSTOWN STATION AND BOULEVARD LTD.

ARCHITECTS:
MDO ARCHITECTS

- LEGEND**
- SITE BOUNDARY
 - AREA SUBJECT OF FUTURE OUTLINE PERMISSION
 - P1 - CAST IN situ CONCRETE TO FOOTPATH - DWG. NO. L1-901-1 DETAIL 01
 - P2 - COLOURED ASPHALT TO CYCLE PATH - DWG. NO. L1-901-1 DETAIL 02
 - P3 - BLOCK PAVING TO ON-STREET PARKING - DWG. NO. L1-901-2 DETAIL 03
 - P4 - BLOCK PAVING W/ SILVER EDGE TO OFF-STREET PARKING - DWG. L1-901-2 DETAIL 04
 - P5 - BLOCK PAVING TO DEFENSIBLE SPACE - DWG. NO. L1-901-3 DETAIL 05
 - P6 - FLAG PAVING TO PRIVATE AMENITY SPACE - DWG. NO. L1-901-3 DETAIL 06
 - P7 - EXPOSED AGGREGATE CONCRETE PAVING (LIGHT BUFF) - DWG. NO. L1-901-4 DETAIL 07
 - P8 - EXPOSED AGGREGATE CONCRETE PAVING (DARK BUFF) - DWG. NO. L1-901-4 DETAIL 08
 - P9 - SOFT POUR SURFACE - DWG. NO. L1-901-5 DETAIL 09
 - P11 - HIGH FRICTION SURFACE TO SIDE STREET & HOME ZONE - DWG. NO. L1-901-6 DETAIL 11
 - P12 - HOT ROLLED ASPHALT TO ROAD - DWG. NO. L1-901-6 DETAIL 11
 - LAWN PLANTING - REFER TO SOFT LANDSCAPE SERIES L1-600
 - SHRUB PLANTING - REFER TO SOFT LANDSCAPE SERIES L1-600
 - SHRUB PLANTING - REFER TO SOFT LANDSCAPE SERIES L1-600
 - WOODLAND PLANTING - REFER TO SOFT LANDSCAPE SERIES L1-600
 - S2 - ELLIPTICAL WOODEN SEAT - DWG. NO. L1-904-2 DETAIL 01
 - LB1 - TWO COMPARTMENT S45 RECYCLING BIN - DWG. NO. L1-904-1 DETAIL 02
 - BS1 - SHEFFIELD BIKE STAND - DWG. NO. L1-904-1 DETAIL 01
 - STEPPING STONES
 - LIGHT POLE - REFER TO ENGINEERS SPECIFICATION
 - PROPOSED TREE - REFER TO SOFT LANDSCAPE TREES DWG. L1-602
 - EXISTING TREE TO BE RETAINED - REFER TO SOFT LANDSCAPE TREES DWG. L1-602



NO.	REVISIONS	DATE
C1	FOR COMPLIANCE	03.2023

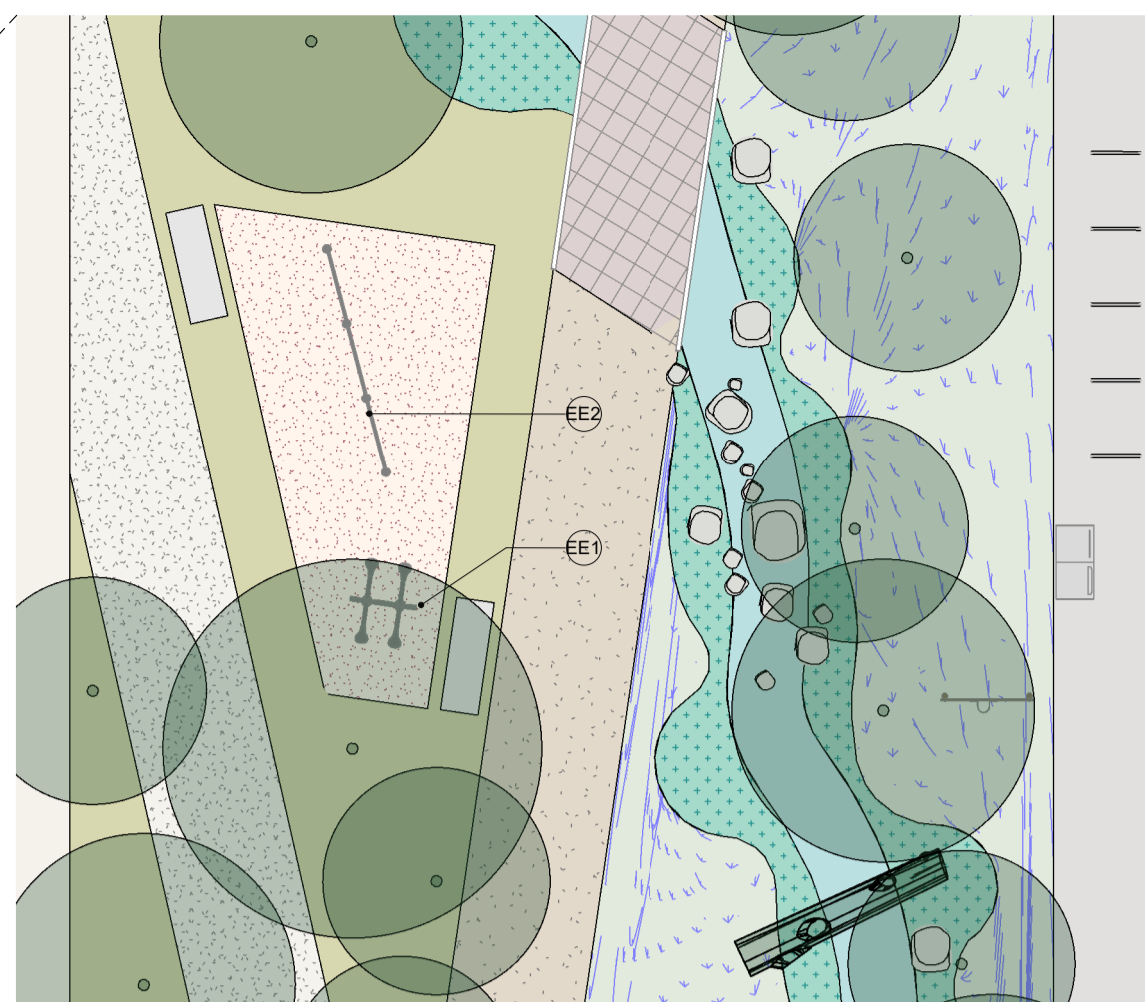
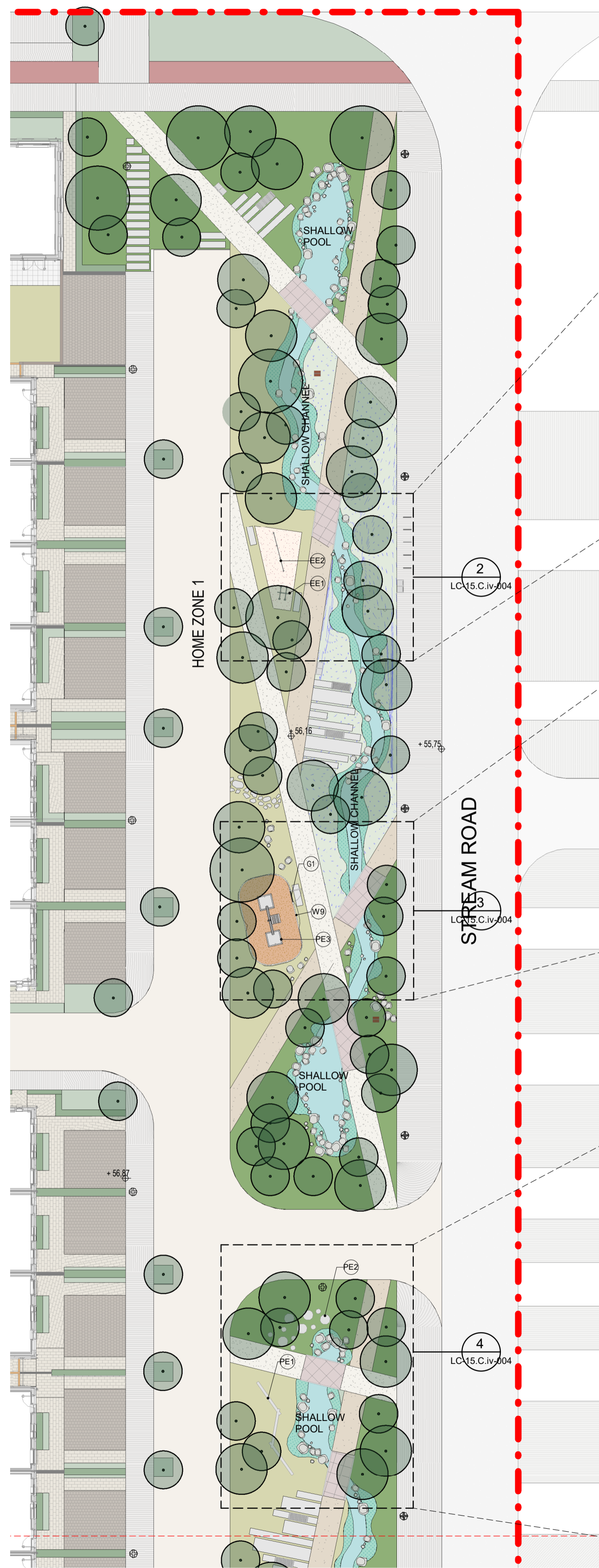
Job No.	23A2A	Drawn By	KFR
Dwg No.	LC-15.C.iv-003	Checked By	JM
Scale	As indicated @A1	Date	MARCH 2023

JOB DESCRIPTION

Site: ADAMSTOWN BOULEVARD
 Project: ADAMSTOWN BOULEVARD - COMPLIANCE NO. 15.C (iv)
 Title: POCKET PARK DETAIL PLAN

NMP
 Niall Montgomery + Partners

Architects 33 Rock Road, Williamstown, Blackrock, Co. Dublin
 Telephones: 2121 800 Fax: 2121 007 E-mail: info@nmp.ie



2 LINEAR PARK-1 - Callout 1
1:100 @A1



3 LINEAR PARK-1 - Callout 2
1:100 @A1



4 LINEAR PARK-1 - Callout 3
1:100 @A1

1 LINEAR PARK - PLAN 1 OF 3
1:250 @A1

NOTE
ALL DIMENSIONS TO BE CHECKED ON SITE
NO DIMENSIONS TO BE SCALED FROM THIS DRAWING
THIS DRAWING IS TO BE READ IN CONJUNCTION WITH
RELEVANT CONSULTANT DRAWINGS
NO PART OF THIS DOCUMENT MAY BE REPRODUCED OR
TRANSMITTED IN ANY FORM OR STORED IN ANY RETRIEVAL
SYSTEM OF ANY NATURE WITHOUT THE WRITTEN PERMISSION
OF THE LANDSCAPE ARCHITECT AS COPYRIGHT HOLDER EXCEPT
AS AGREED FOR USE ON THE PROJECT FOR WHICH THE
DOCUMENT WAS ORIGINALLY ISSUED.
FOR DRAWING INDEX, GENERAL NOTES, REFER TO
DWG L1-001

CLIENT:
ADAMSTOWN STATION AND BOULEVARD LTD.

ARCHITECTS:
MDO ARCHITECTS

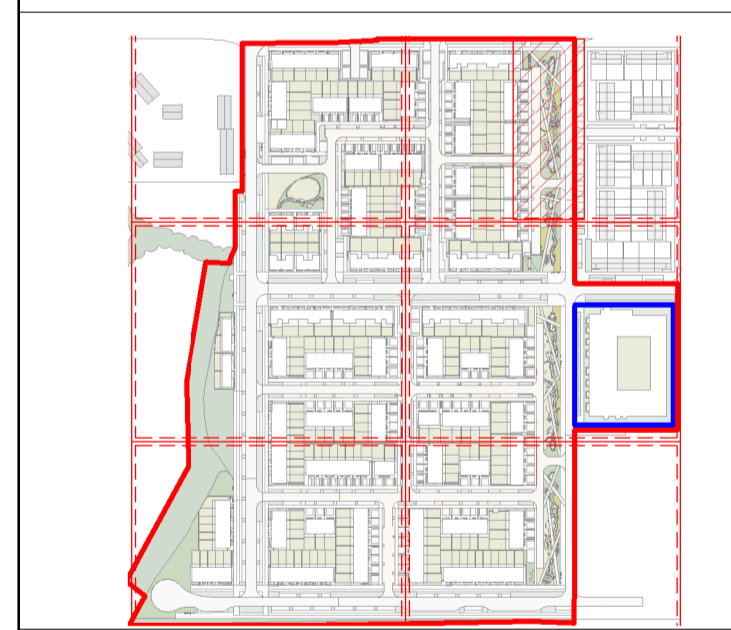
LEGEND

--- SITE BOUNDARY

--- AREA SUBJECT OF FUTURE OUTLINE PERMISSION

P1 - CAST IN situ CONCRETE TO FOOTPATH - DWG. NO. L1-901-1 DETAIL 01	LAWN PLANTING - REFER TO SOFT LANDSCAPE SERIES L1-600
P2 - COLOURED ASPHALT TO CYCLE PATH - DWG. NO. L1-901-1 DETAIL 02	SHRUB PLANTING - REFER TO SOFT LANDSCAPE SERIES L1-400
P3 - BLOCK PAVING TO ON-STREET PARKING - DWG. NO. L1-901-2 DETAIL 03	SHRUB PLANTING - REFER TO SOFT LANDSCAPE SERIES L1-400
P4 - BLOCK PAVING W/ SILVER DOSE TO OFF-STREET PARKING - DWG. L1-901-2 DETAIL 04	WOODLAWN PLANTING - REFER TO SOFT LANDSCAPE SERIES L1-600
P5 - BLOCK PAVING TO DEFENSIBLE SPACE - DWG. NO. L1-901-3 DETAIL 05	WILDFLOWER PLANTING - REFER TO SOFT LANDSCAPE SERIES L1-600
PE - FLAG PAVING TO PRIVATE AMENITY SPACE - DWG. NO. L1-901-3 DETAIL 06	EMERGENT AQUATIC PLANTING - REFER TO SOFT LANDSCAPE SERIES L1-600
P7 - EXPOSED AGGREGATE CONCRETE PAVING (LIGHT BUFF) - DWG. NO. L1-901-4 DETAIL 07	MEADOW GRASS - REFER TO SOFT LANDSCAPE SERIES L1-400
P8 - EXPOSED AGGREGATE CONCRETE PAVING (DARK BUFF) - DWG. NO. L1-901-4 DETAIL 08	SHALLOW POOL / CHANNEL
P9 - SOFT POUR SURFACE - DWG. NO. L1-901-5 DETAIL 09	SWALE
P10 - PRECAST MODULAR PAVING SLABS - DWG. NO. L1-901-5 DETAIL 10	NATURAL PLAY - SAND PIT
P11 - HIGH FRICTION SURFACE TO SIDE STREET & HOME ZONE - DWG. NO. L1-901-6 DETAIL 11	B1 - TIMBER BENCH - DWG. NO. L1-904-1 DETAIL 03
P12 - HOT ROLLED ASPHALT TO ROAD - DWG. NO. L1-901-6 DETAIL 11	B2 - TWO COMPARTMENT S45 RECYCLING BIN - DWG. NO. L1-904-1 DETAIL 02
B1 - PREFABRICATED CONCRETE BRIDGE - DWG. L1-903 DETAIL 01	B3 - SHEPHERD BIKES STAND - DWG. NO. L1-904-1 DETAIL 01
PROPOSED BUS STOP	STEPPING STONES
EE1 - PARALLEL BARS - DWG. NO. L1-907-1 DETAIL 01	NATURAL PLAY BOULDERS
EE2 - PUSH UP BARS - DWG. NO. L1-907-1 DETAIL 02	PROPOSED TREE - REFER TO SOFT LANDSCAPE TREES DWG. L1-602
EE3 - PULL UP STATION - DWG. NO. L1-907-2 DETAIL 01	EXISTING TREE TO BE RETAINED - REFER TO SOFT LANDSCAPE TREES DWG. L1-602
PE1 - TRIPLE BALANCE BEAM - DWG. NO. L1-907-3 DETAIL 01	LIGHT POLE - REFER TO ENGINEERS SPECIFICATION
PE2 - TWATERLILES BALANCE POST - DWG. NO. L1-907-4 DETAIL 01	WB - WHITE PICKET FENCE - DWG. NO. L1-907-5 DETAIL 01
PE3 - WATER SEESAW - DWG. NO. L1-907-4 DETAIL 02	G1 - WHITE PICKET FENCE GATE - DWG. NO. L1-907-5 DETAIL 02

* SUBJECT TO SAMPLE PANEL APPROVAL



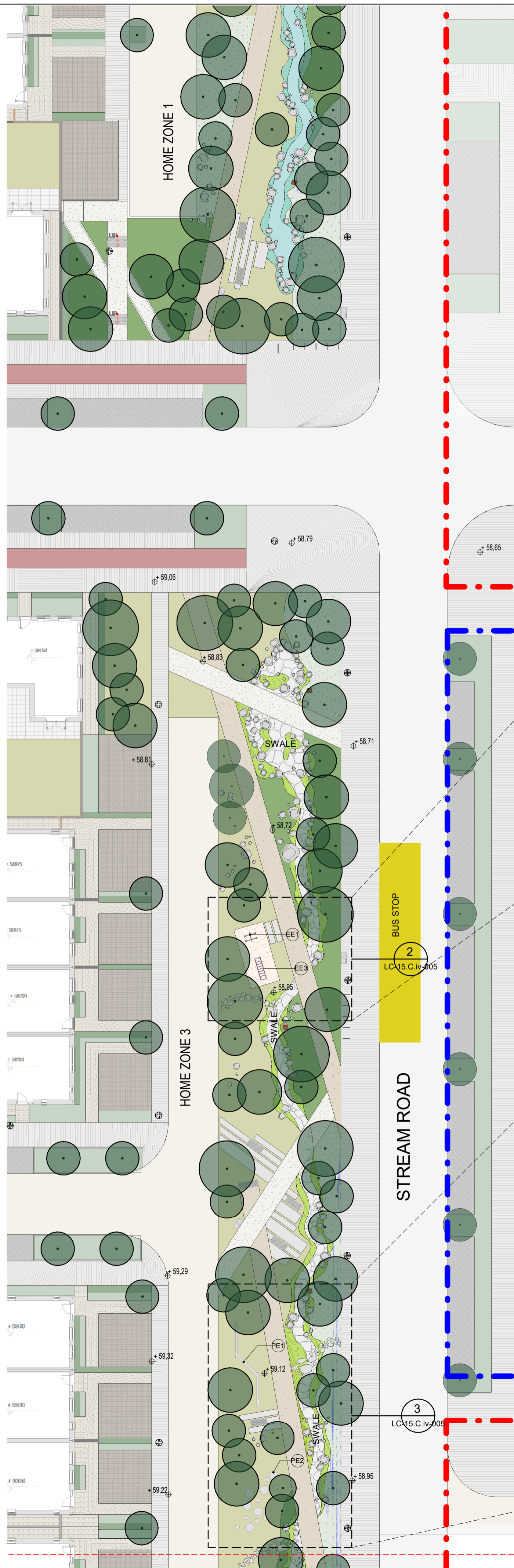
C1	FOR COMPLIANCE	03.2023
----	----------------	---------

REVISIONS

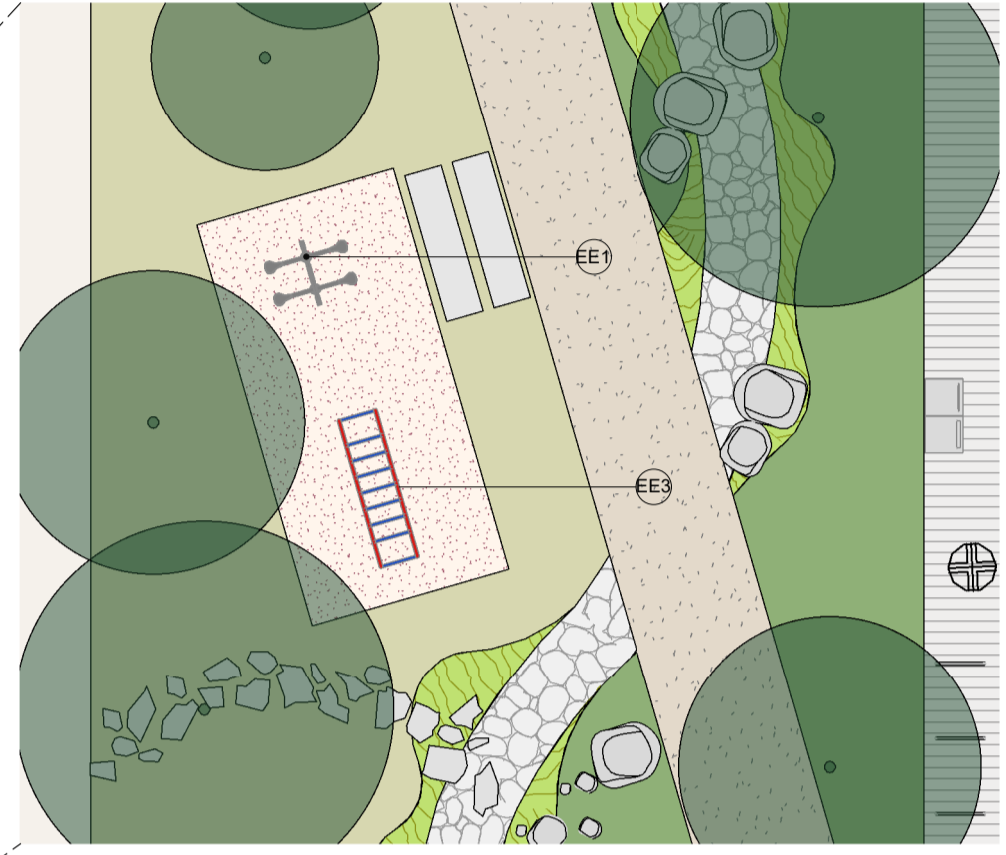
Job No.	23A2A	Drawn By	KFR
Dwg No.	LC-15.C.IV-004	Checked By	JM
Scale	As indicated @A1	Date	MARCH 2023

JOB DESCRIPTION

Site	ADAMSTOWN BOULEVARD
Project	ADAMSTOWN BOULEVARD - COMPLIANCE NO. 15.C.IV
Title	LINEAR PARK - SHEET 1 OF 3



1 LINEAR PARK - PLAN 2 OF 3
1:250 @A1



2 LINEAR PARK-2 - Callout 1
1:100 @A1



3 LINEAR PARK-2 - Callout 2
1:100 @A1

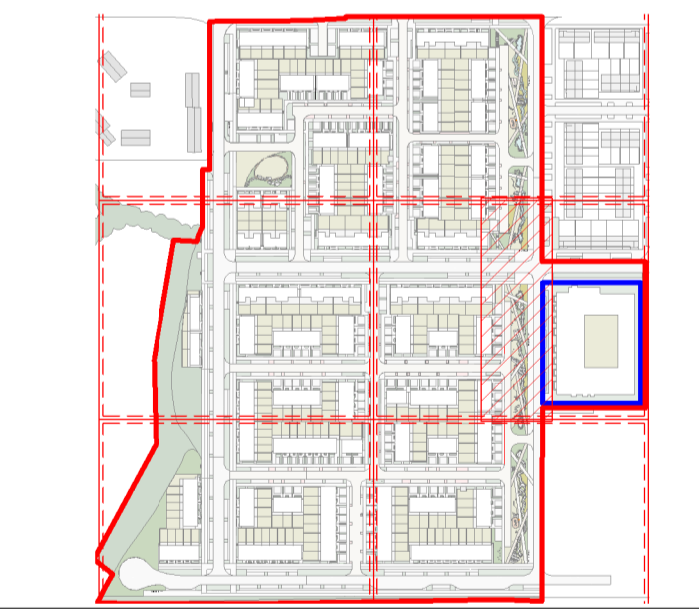
NOTE
ALL DIMENSIONS TO BE CHECKED ON SITE
NO DIMENSIONS TO BE SCALED FROM THIS DRAWING
THIS DRAWING IS TO BE READ IN CONJUNCTION WITH
RELEVANT CONSULTANT DRAWINGS
NO PART OF THIS DOCUMENT MAY BE REPRODUCED OR
TRANSMITTED IN ANY FORM OR STORED IN ANY RETRIEVAL
SYSTEM OF ANY NATURE WITHOUT THE WRITTEN PERMISSION
OF THE LANDSCAPE ARCHITECT AS COPYRIGHT HOLDER EXCEPT
AS AGREED FOR USE ON THE PROJECT FOR WHICH THE
DOCUMENT WAS ORIGINALLY ISSUED.
FOR DRAWING INDEX, GENERAL NOTES, REFER TO
DWG L1-001

CLIENT:
ADAMSTOWN STATION AND BOULEVARD LTD.

ARCHITECTS:
MDO ARCHITECTS

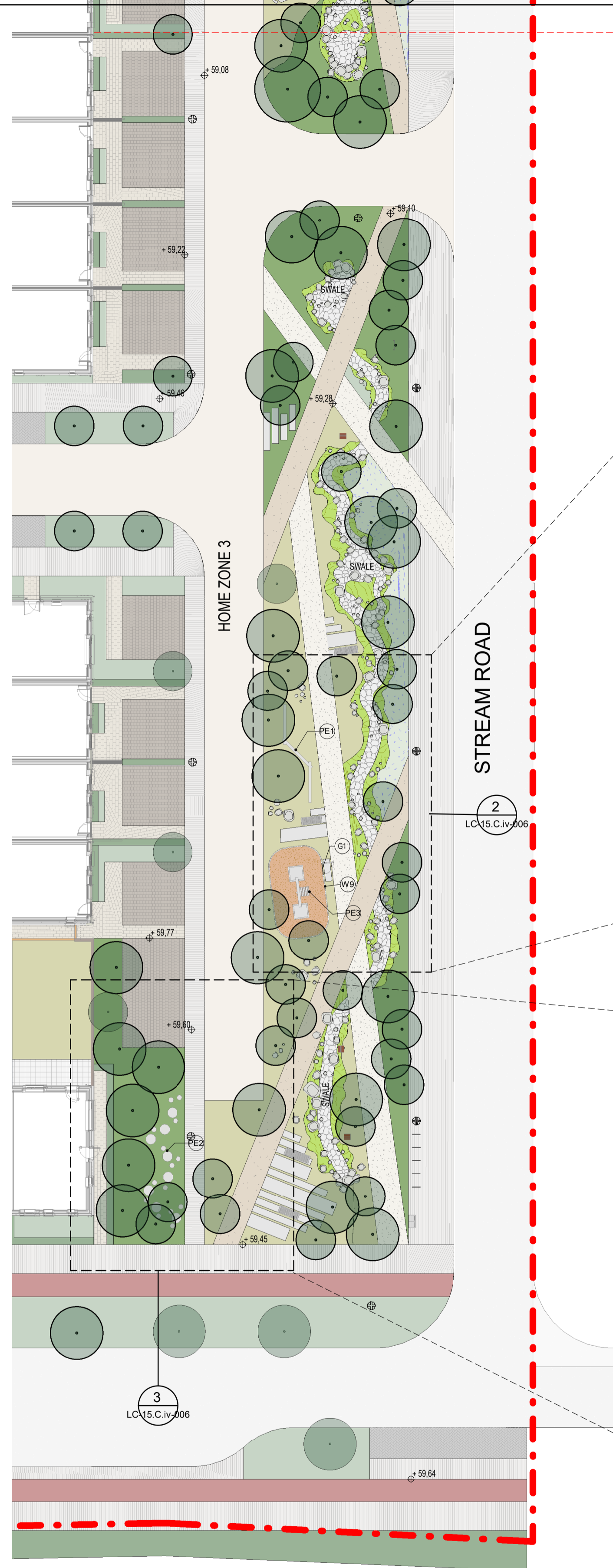
LEGEND
- - - - - SITE BOUNDARY
- - - - - AREA SUBJECT OF FUTURE OUTLINE PERMISSION

- P1 - CAST IN SITU CONCRETE TO FOOTPATH - DWG. NO. L1-901-1 DETAIL 01
- P2 - COLOURED ASPHALT TO CYCLE PATH - DWG. NO. L1-901-1 DETAIL 02
- P3 - BLOCK PAVING TO ON-STREET PARKING - DWG. NO. L1-901-2 DETAIL 03
- P4 - BLOCK PAVING W/ SILVER EDGE TO OFF-STREET PARKING - DWG. L1-901-2 DETAIL 04
- P5 - BLOCK PAVING TO DEFENSIBLE SPACE - DWG. NO. L1-901-3 DETAIL 05
- P6 - FLAG PAVING TO PRIVATE AMENITY SPACE - DWG. NO. L1-901-3 DETAIL 06
- P7 - EXPOSED AGGREGATE CONCRETE PAVING (LIGHT BUFF) - DWG. NO. L1-901-3 DETAIL 07
- P8 - EXPOSED AGGREGATE CONCRETE (DARK BUFF) - DWG. NO. L1-901-4 DETAIL 08
- P9 - SOFT POUR SURFACE - DWG. NO. L1-901-4 DETAIL 09
- P10 - PRECAST MODULAR PAVING SLABS - DWG. NO. L1-901-5 DETAIL 10
- P11 - HIGH FRICTION SURFACE TO SIDE STREET & HOME ZONE - DWG. NO. L1-901-6 DETAIL 11
- P12 - HOT ROLLED ASPHALT TO ROAD - DWG. NO. L1-901-6 DETAIL 11
- B1 - PREFABRICATED CONCRETE BENCH - DWG. L1-903 DETAIL 01
- B2 - TIMBER BENCH - DWG. NO. L1-904-1 DETAIL 02
- B3 - TWO COMPARTMENT S45 RECYCLING BIN - DWG. NO. L1-904-1 DETAIL 02
- B4 - SHEPHERD BIKES STAND - DWG. NO. L1-904-1 DETAIL 01
- PROPOSED BUS STOP
- STEPPING STONES
- EE1 - PARALLEL BARS - DWG. NO. L1-907-1 DETAIL 01
- EE2 - PUSH UP BARS - DWG. NO. L1-907-1 DETAIL 02
- EE3 - PULL UP STATION - DWG. NO. L1-907-2 DETAIL 01
- PE1 - TRIPLE BALANCE BEAM - DWG. NO. L1-907-3 DETAIL 01
- PE2 - TWATERLILES BALANCE POST - DWG. NO. L1-907-4 DETAIL 01
- PE3 - WATER SEESAW - DWG. NO. L1-907-4 DETAIL 02
- NATURAL PLAY - SAND PIT
- LAWN PLANTING - REFER TO SOFT LANDSCAPE SERIES L1-600
- SHRUB PLANTING - REFER TO SOFT LANDSCAPE SERIES L1-400
- SHRUB PLANTING - REFER TO SOFT LANDSCAPE SERIES L1-600
- WOODLAWN PLANTING - REFER TO SOFT LANDSCAPE SERIES L1-600
- WILDFLOWER PLANTING - REFER TO SOFT LANDSCAPE SERIES L1-600
- EMERGENT AQUATIC PLANTING - REFER TO SOFT LANDSCAPE SERIES L1-600
- MEADOW GRASS - REFER TO SOFT LANDSCAPE SERIES L1-400
- SHALLOW POOL / CHANNEL
- SWALE
- NATURAL PLAY - SAND PIT
- B1 - TIMBER BENCH - DWG. NO. L1-904-1 DETAIL 02
- B2 - TWO COMPARTMENT S45 RECYCLING BIN - DWG. NO. L1-904-1 DETAIL 02
- B3 - SHEPHERD BIKES STAND - DWG. NO. L1-904-1 DETAIL 01
- STEPPING STONES
- NATURAL PLAY BOULDERS
- PROPOSED TREE - REFER TO SOFT LANDSCAPE TREES DWG. L1-602
- EXISTING TREE TO BE RETAINED - REFER TO SOFT LANDSCAPE TREES DWG. L1-602
- LIGHT POLE - REFER TO ENGINEERS SPECIFICATION
- WB - WHITE PICKET FENCE - DWG. NO. L1-907-5 DETAIL 01
- G1 - WHITE PICKET FENCE GATE - DWG. NO. L1-907-5 DETAIL 02



C1	FOR COMPLIANCE	03.2023
REVISIONS		
Job No.	23A2A	Drawn By KFR
Dwg No.	LC-15.C.iv-005	Checked By JM
Scale	As indicated @A1	Date MARCH 2023

JOB DESCRIPTION
Site ADAMSTOWN BOULEVARD
Project ADAMSTOWN BOULEVARD - COMPLIANCE NO. 15.C (iv)
Title LINEAR PARK - SHEET 2 OF 3



1 LINEAR PARK - PLAN 3 OF 3
1:250 @A1



2 LINEAR PARK-3 - Callout 1
1:100 @A1



3 LINEAR PARK-3 - Callout 2
1:125 @A1

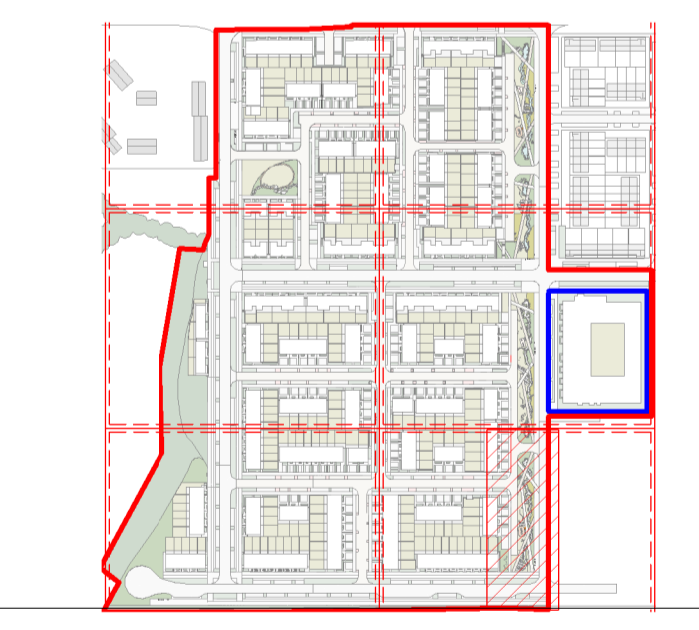
NOTE
ALL DIMENSIONS TO BE CHECKED ON SITE
NO DIMENSIONS TO BE SCALED FROM THIS DRAWING
THIS DRAWING IS TO BE READ IN CONJUNCTION WITH RELEVANT CONSULTANT DRAWINGS
NO PART OF THIS DOCUMENT MAY BE REPRODUCED OR TRANSMITTED IN ANY FORM OR STORED IN ANY RETRIEVAL SYSTEM OF ANY NATURE WITHOUT THE WRITTEN PERMISSION OF THE LANDSCAPE ARCHITECT AS COPYRIGHT HOLDER EXCEPT AS AGREED FOR USE ON THE PROJECT FOR WHICH THE DOCUMENT WAS ORIGINALLY ISSUED.
FOR DRAWING INDEX, GENERAL NOTES, REFER TO DWG L1-001

CLIENT:
ADAMSTOWN STATION AND BOULEVARD LTD.

ARCHITECTS:
MDO ARCHITECTS

LEGEND
- - - - - SITE BOUNDARY
- - - - - AREA SUBJECT OF FUTURE OUTLINE PERMISSION

- P1 - CAST IN SITU CONCRETE TO FOOTPATH - DWG. NO. L1-901-1 DETAIL 01
 - P2 - COLOURED ASPHALT TO CYCLE PATH - DWG. NO. L1-901-1 DETAIL 02
 - P3 - BLOCK PAVING TO ON-STREET PARKING - DWG. NO. L1-901-2 DETAIL 03
 - P4 - BLOCK PAVING W/ SILVER EDGE TO OFF-STREET PARKING - DWG. L1-901-2 DETAIL 04
 - P5 - BLOCK PAVING TO DEFENSIBLE SPACE - DWG. NO. L1-901-3 DETAIL 05
 - P6 - FLAG PAVING TO PRIVATE AMENITY SPACE - DWG. NO. L1-901-3 DETAIL 06
 - P7 - EXPOSED AGGREGATE CONCRETE PAVING (LIGHT BUFF) - DWG. NO. L1-901-4 DETAIL 07
 - P8 - EXPOSED AGGREGATE CONCRETE (DARK BUFF) - DWG. NO. L1-901-4 DETAIL 08, 07
 - P9 - SOFT POUR SURFACE - DWG. NO. L1-901-5 DETAIL 09
 - P10 - PRECAST MODULAR PAVING SLABS - DWG. NO. L1-901-5 DETAIL 10
 - P11 - HIGH FRICTION SURFACE TO SIDE STREET & HOME ZONE - DWG. NO. L1-901-6 DETAIL 11
 - P12 - HOT ROLLED ASPHALT TO ROAD - DWG. NO. L1-901-6 DETAIL 11
 - B1 - PREFABRICATED CONCRETE BRIDGE - DWG. L1-903 DETAIL 01
 - PROPOSED BUS STOP
 - EE1 - PARALLEL BARS - DWG. NO. L1-907-1 DETAIL 01
 - EE2 - PUSH UP BARS - DWG. NO. L1-907-1 DETAIL 02
 - EE3 - PULL UP STATION - DWG. NO. L1-907-2 DETAIL 01
 - PE1 - TRIPLE BALANCE BEAM - DWG. NO. L1-907-3 DETAIL 01
 - PE2 - TWATERLILES BALANCE PCST - DWG. NO. L1-907-4 DETAIL 01
 - PE3 - WATER SEESAW - DWG. NO. L1-907-4 DETAIL 02
 - LAWN PLANTING - REFER TO SOFT LANDSCAPE SERIES L1-600
 - SHRUB PLANTING - REFER TO SOFT LANDSCAPE SERIES L1-400
 - SHRUB PLANTING - REFER TO SOFT LANDSCAPE SERIES L1-600
 - WOODLAWN PLANTING - REFER TO SOFT LANDSCAPE SERIES L1-600
 - WILDFLOWER PLANTING - REFER TO SOFT LANDSCAPE SERIES L1-600
 - EMERGENT AQUATIC PLANTING - REFER TO SOFT LANDSCAPE SERIES L1-600
 - MEADOW GRASS - REFER TO SOFT LANDSCAPE SERIES L1-400
 - SHALLOW POOL / CHANNEL
 - SWALE
 - NATURAL PLAY - SAND PIT
 - B1 - TIMBER BENCH - DWG. NO. L1-904-1 DETAIL 01
 - LB1 - TWO COMPARTMENT S45 RECYCLING BIN - DWG. NO. L1-904-1 DETAIL 02
 - BS1 - SHEPHERD BIKE STAND - DWG. NO. L1-904-1 DETAIL 01
 - NATURAL PLAY BOULDERS
 - PROPOSED TREE - REFER TO SOFT LANDSCAPE TREES DWG. L1-602
 - EXISTING TREE TO BE RETAINED - REFER TO SOFT LANDSCAPE TREES DWG. L1-603
 - LIGHT POLE - REFER TO ENGINEERS SPECIFICATION
 - WB - WHITE PICKET FENCE - DWG. NO. L1-907-5 DETAIL 01
 - G1 - WHITE PICKET FENCE GATE - DWG. NO. L1-907-5 DETAIL 02
- *SUBJECT TO SAMPLE PANEL APPROVAL



C1 FOR COMPLIANCE 03.2023

REVISIONS

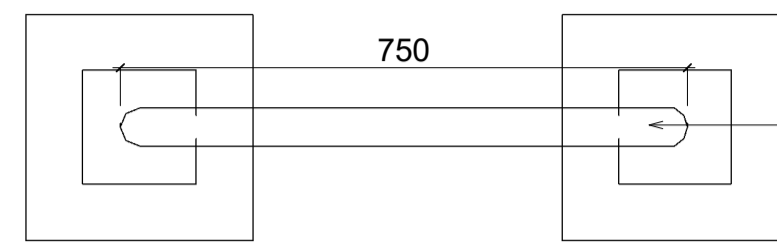
Job No.	23A2A	Drawn By	KFR
Dwg No.	LC-15.C.iv-006	Checked By	JM
Scale	As indicated @A1	Date	MARCH 2023

JOB DESCRIPTION

Site	ADAMSTOWN BOULEVARD
Project	ADAMSTOWN BOULEVARD - COMPLIANCE NO. 15.C.(iv)
Title	LINEAR PARK - SHEET 3 OF 3



REFERENCE IMAGE



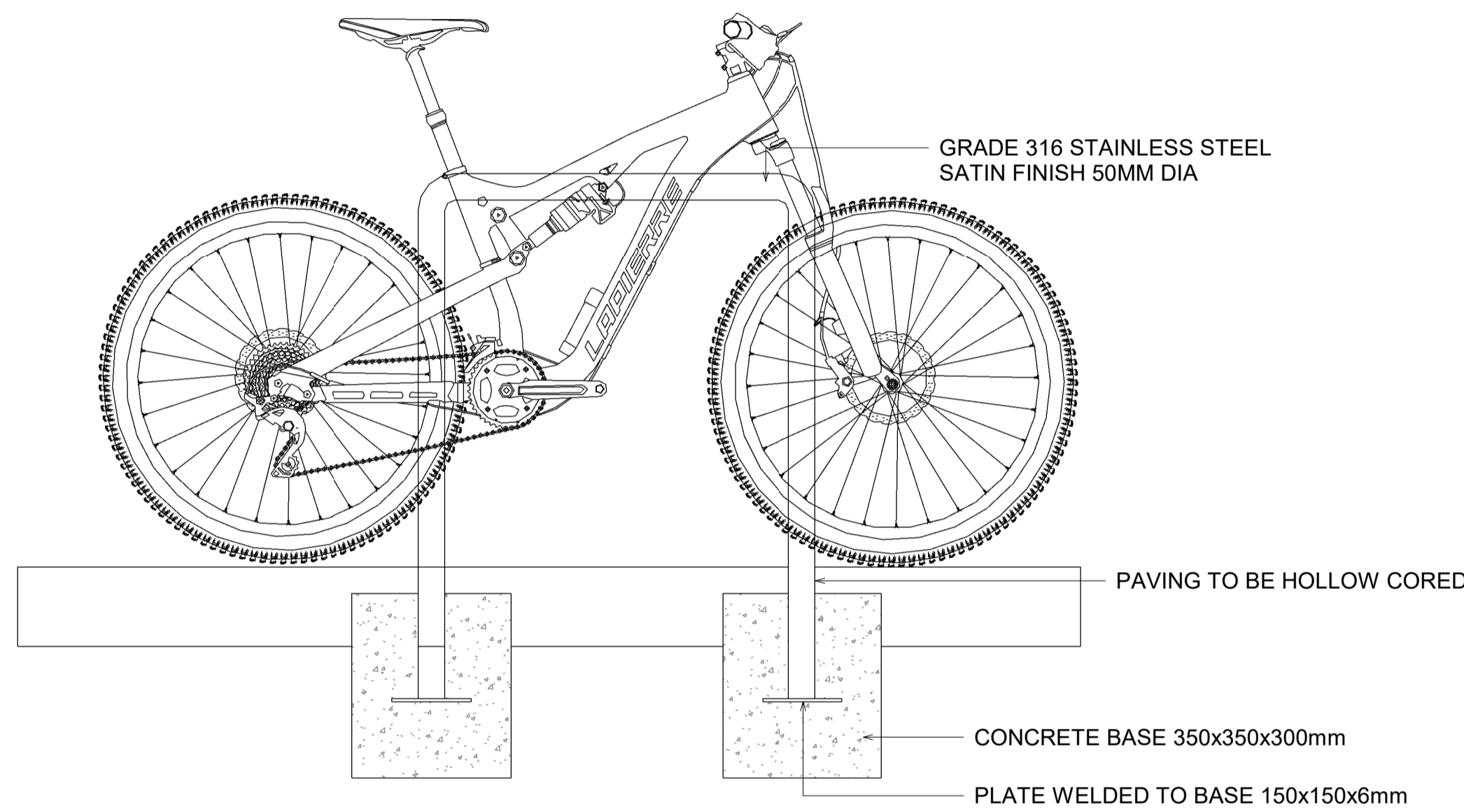
PLAN

GRADE 316 STAINLESS STEEL
SATIN FINISH 50MM DIA

SHEFFIELD CYCLE STAND

DESCRIPTION

TYPE: SHEFFIELD CYCLE STAND
FINISH: STAINLESS STEEL
SIZES: 1000(H) X 1000(W) X 50(Ø)



GRADE 316 STAINLESS STEEL
SATIN FINISH 50MM DIA

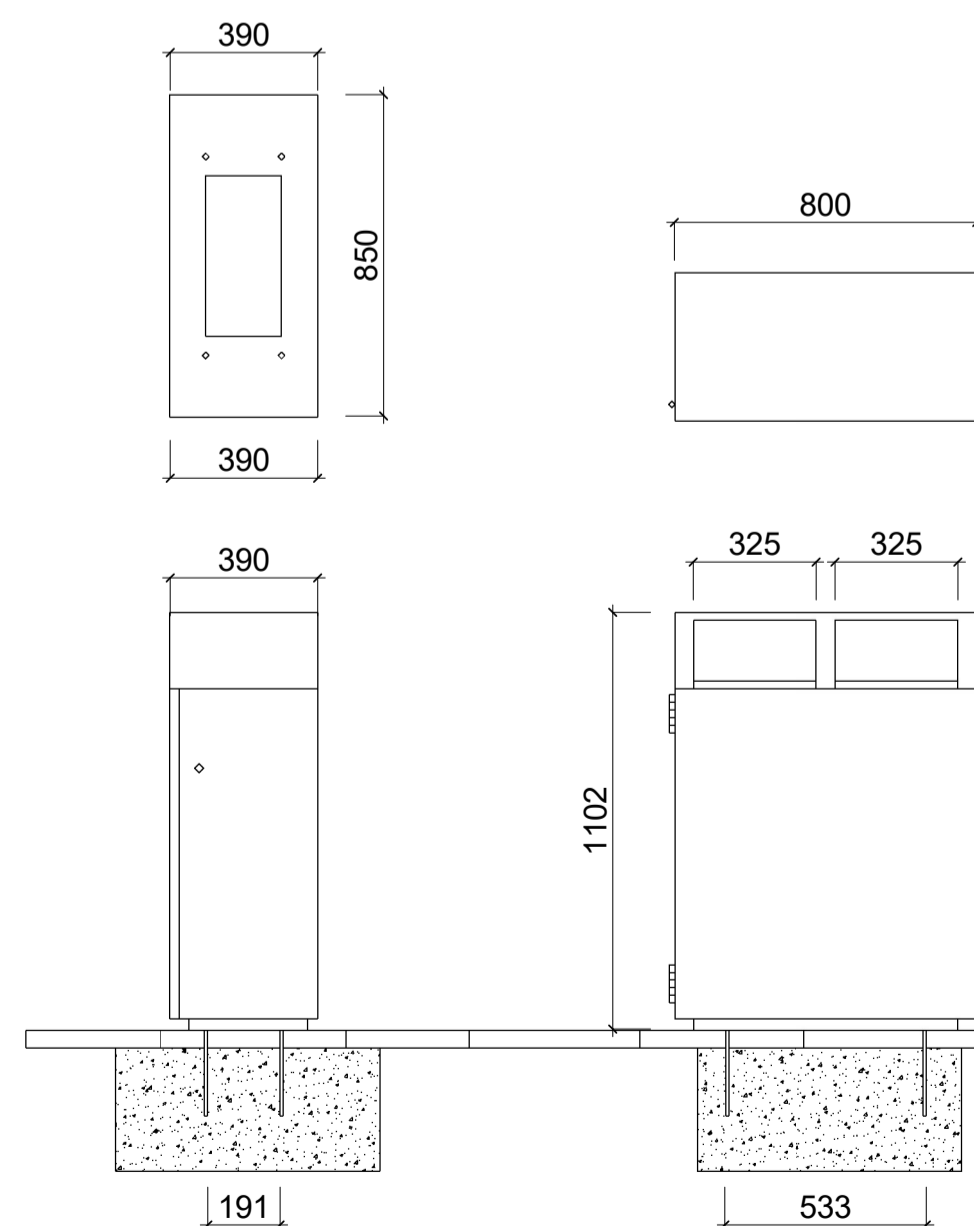
PAVING TO BE HOLLOW CORED

CONCRETE BASE 350x350x300mm

PLATE WELDED TO BASE 150x150x6mm

1 BS - BIKE STAND ELEVATION

1:10 @A1

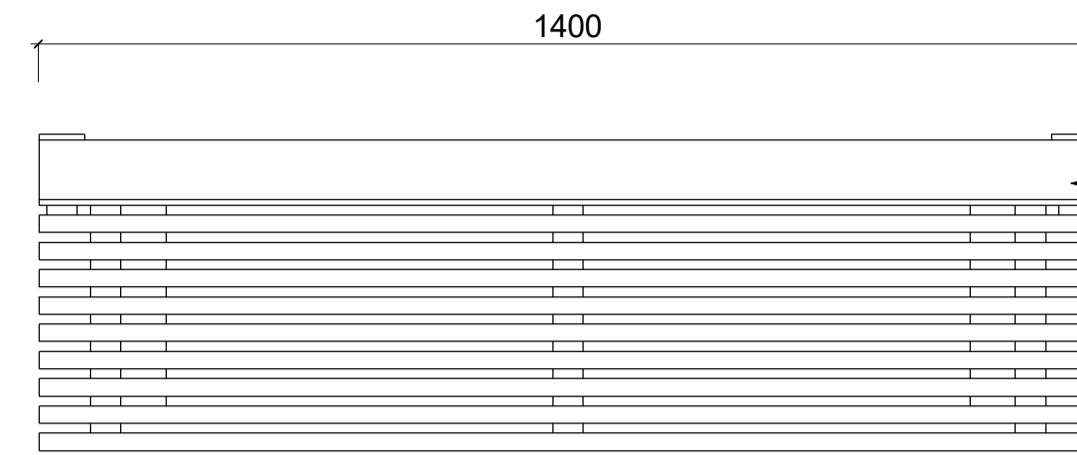


2 TYPICAL DETAIL - RECYCLING BIN, 2 COMPARTMENTS

1:20 @A1

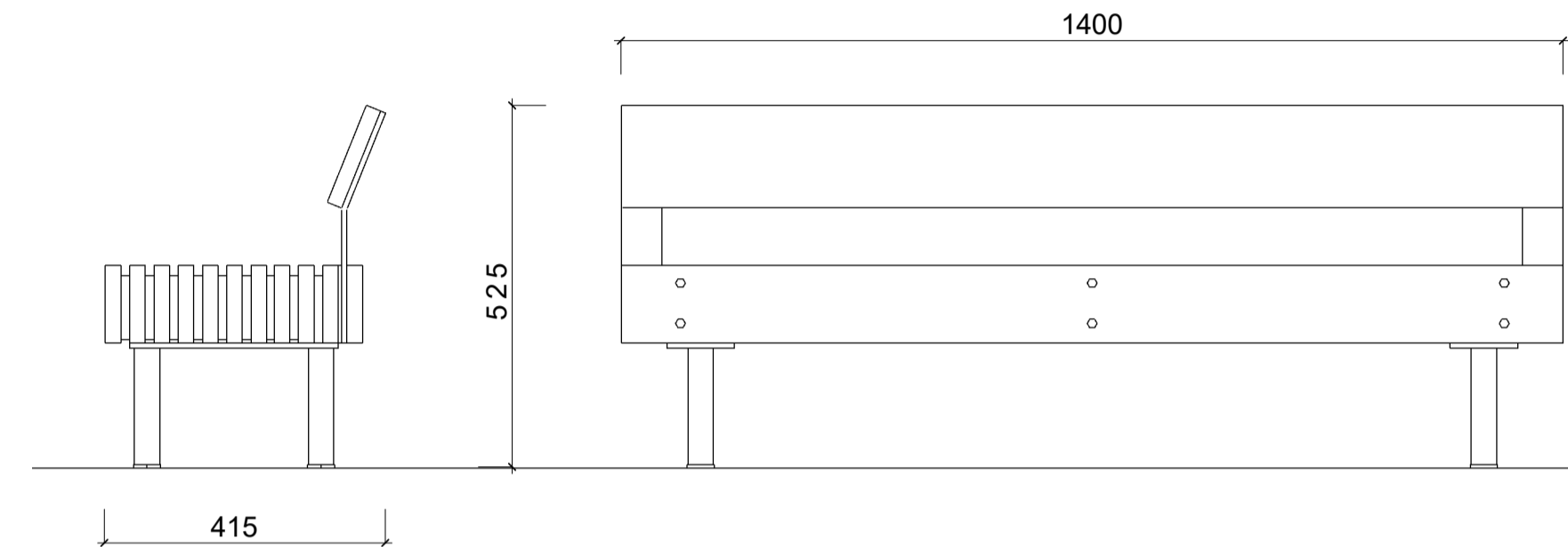


REFERENCE IMAGE

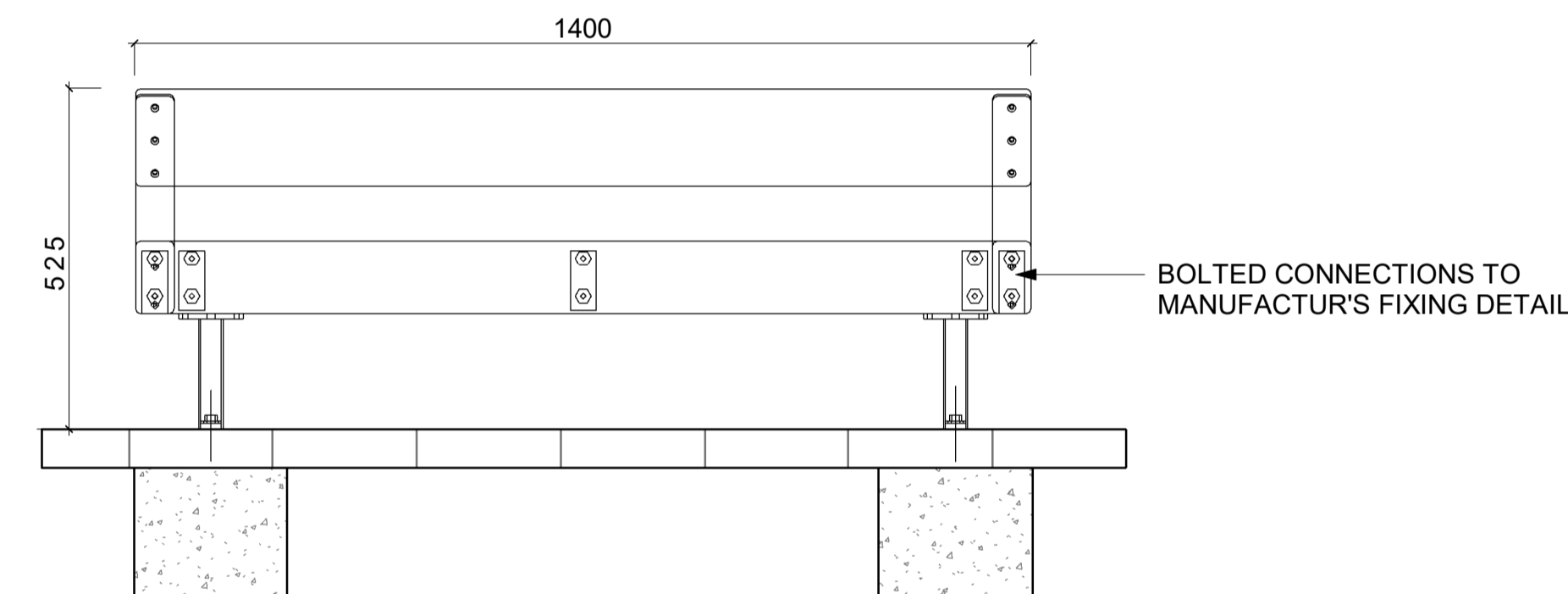


PLAN

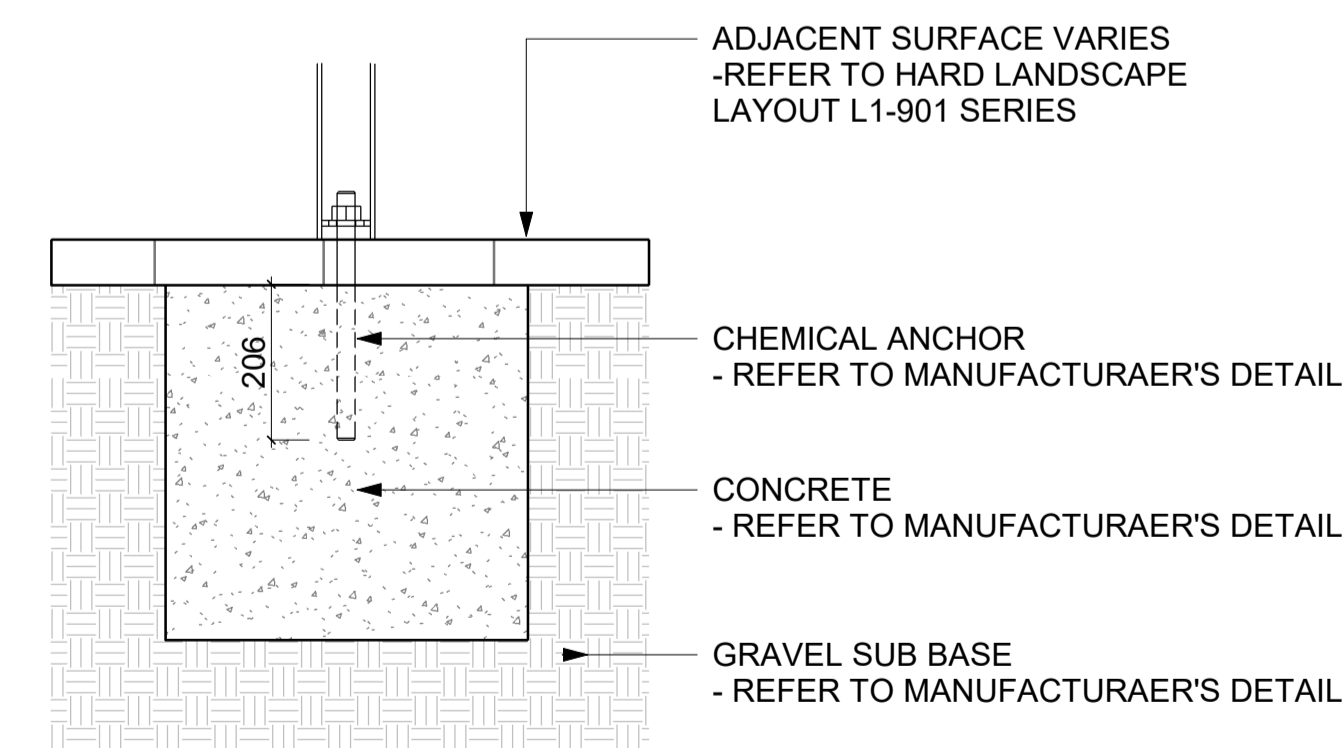
B1 - TIMBER BENCH
- TYPE : WOODY TIMBER BENCH WITH GLAVANIZED STEEL LEGS
- SIZE: 1400 X 415 X 525 MM
- FINISH: THERMALLY MODIFIED WOOD AND GALVANIZED STEEL
- LEGS TREATED WITH POWDER COATING
- SUPPLIER: MMCITE



ELEVATIONS



SECTION



DETAIL

3 B1 - WOODY TIMBER BENCH

1:10 @A1



REFERENCE IMAGE

NOTE: THIS IMAGE DOESN'T INDICATE THE ACTUAL BENCH IN DETAIL DRAWING. IT IS JUST A REPRESENTATIVE IMAGE

NOTE
ALL DIMENSIONS TO BE CHECKED ON SITE
NO DIMENSIONS TO BE SCALED FROM THIS DRAWING
THIS DRAWING IS TO BE READ IN CONJUNCTION WITH RELEVANT CONSULTANTS DRAWINGS
NO PART OF THIS DOCUMENT MAY BE RE-PRODUCED OR TRANSMITTED IN ANY FORM OR STORED IN ANY RETRIEVAL SYSTEM OF ANY NATURE WITHOUT THE WRITTEN PERMISSION OF THE LANDSCAPE ARCHITECT AS COPYRIGHT HOLDER EXCEPT AS AGREED FOR USE ON THE PROJECT FOR WHICH THE DOCUMENT WAS ORIGINALLY ISSUED.
FOR DRAWING INDEX, GENERAL NOTES, REFER TO DWG L1-001

CLIENT:

ADAMSTOWN STATION AND BOULEVARD LTD.

ARCHITECTS:

MDO ARCHITECTS

C1 FOR COMPLIANCE 03.2023

REVISIONS

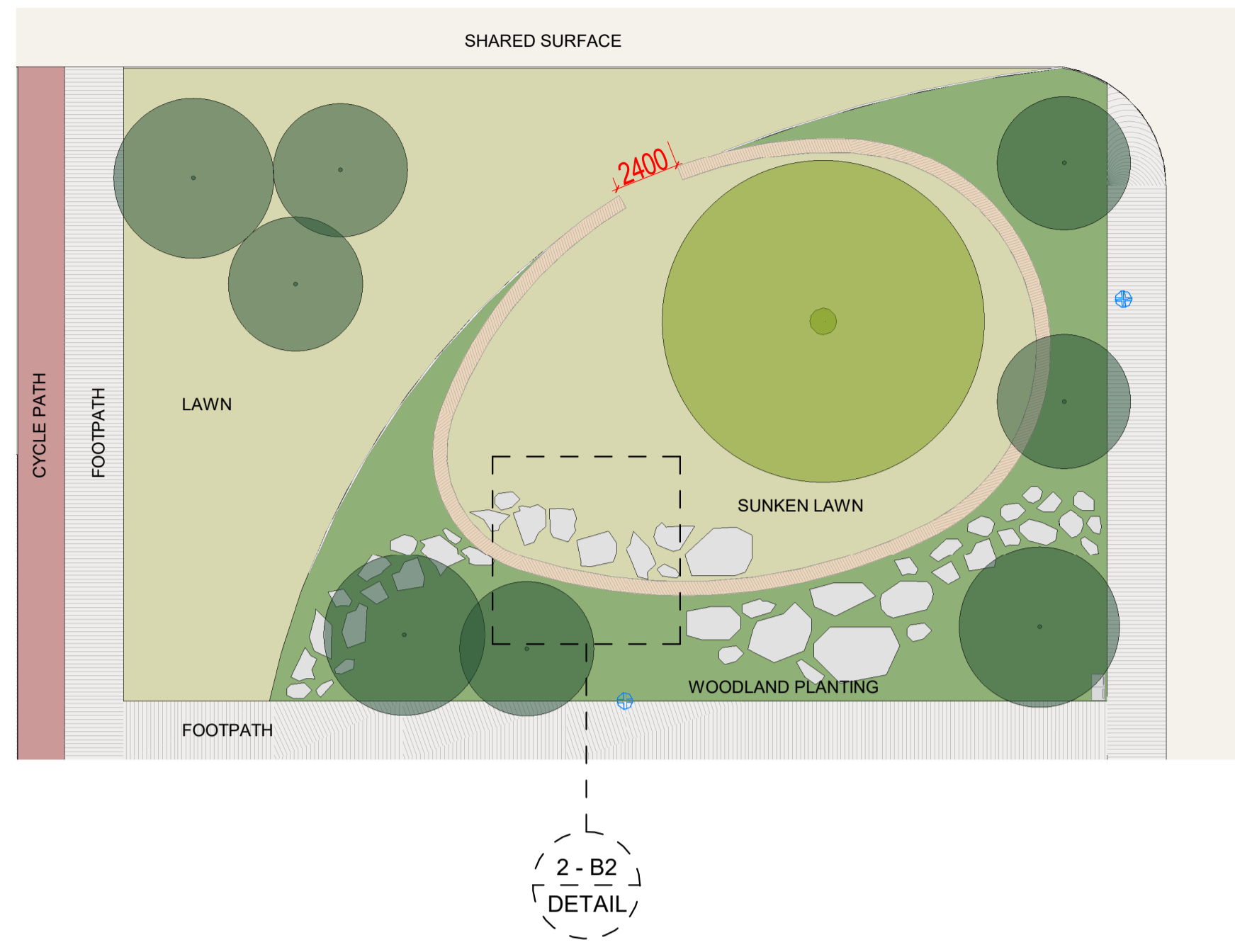
Job No.	23A2A	Drawn By	KR
Dwg No.	L1-904-1	Checked By	JM
Scale	As indicated @A1	Date	MARCH 2022

JOB DESCRIPTION

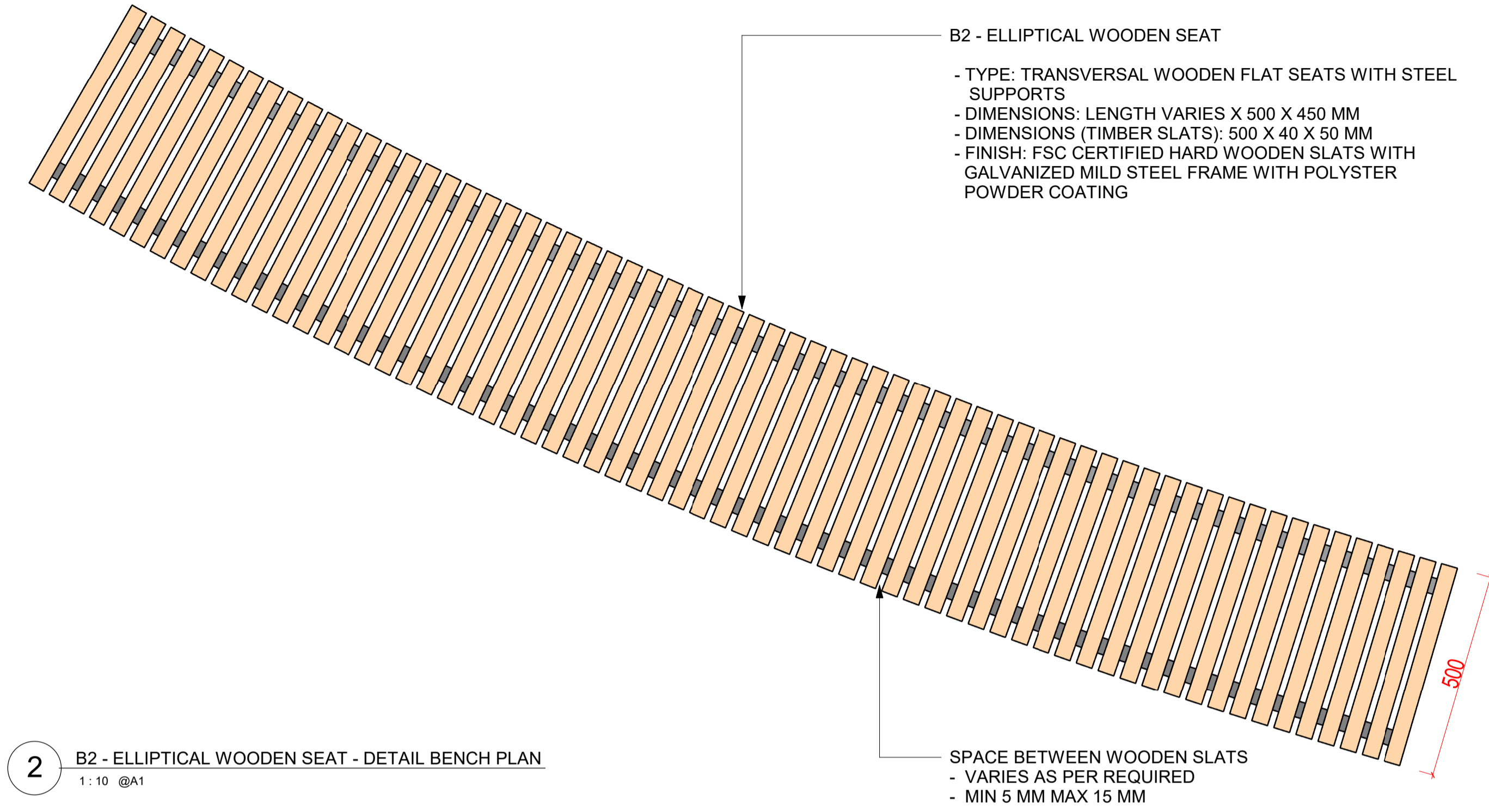
Site	ADAMSTOWN BOULEVARD
Project	ADAMSTOWN BOULEVARD - COMPLIANCE NO. 15.C.(iv)
Title	LANDSCAPE ELEMENTS AND FURNITURE DETAILS - SHEET 1 OF 2



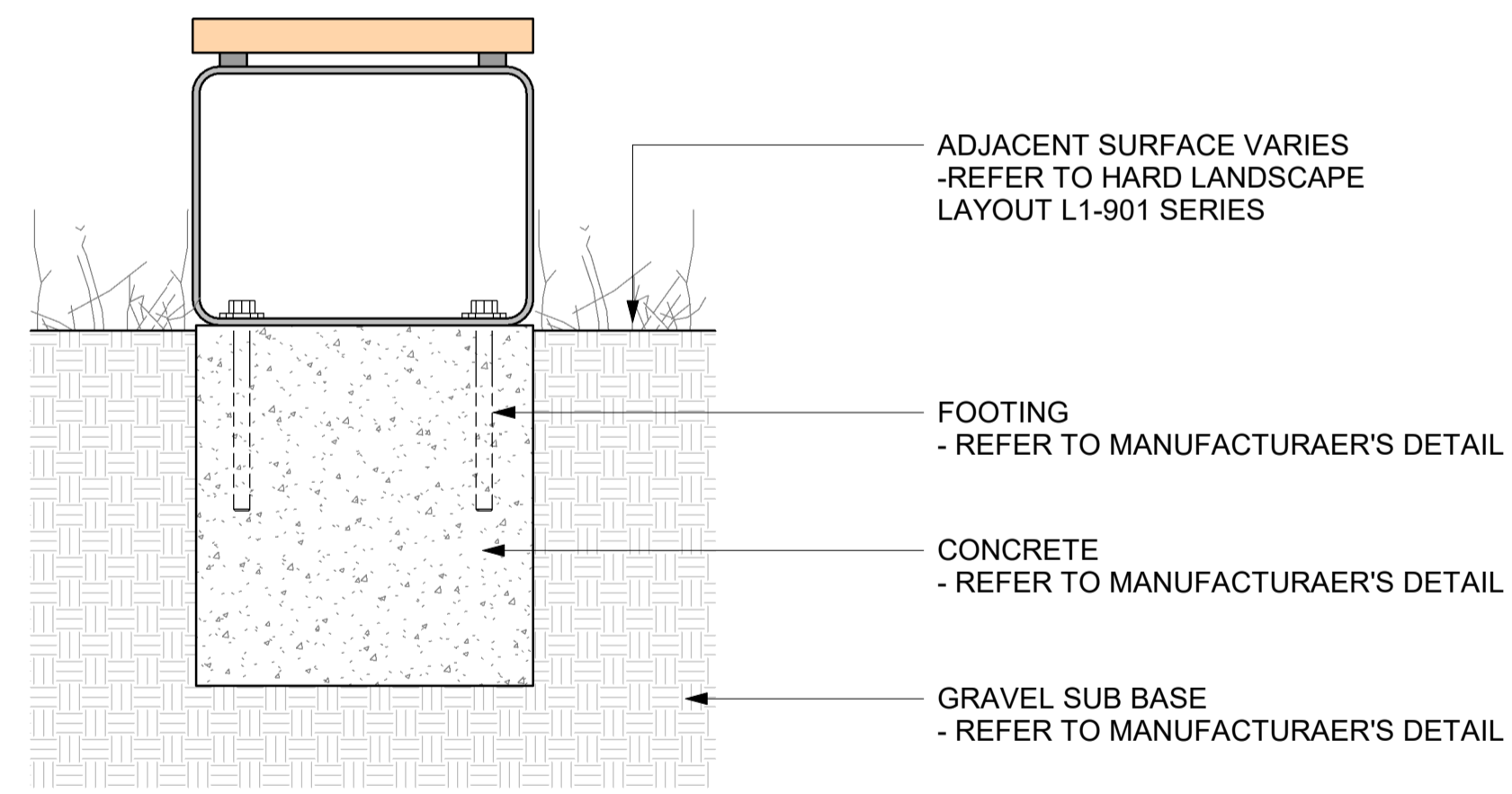
Architects 33 Rock Road, Williamstown, Blackrock, Co. Dublin
Telephones : 2121 800 Fax : 2121 007 E mail : info@nmp.ie



1 POCKET PARK- PLAN
1:200 @A1

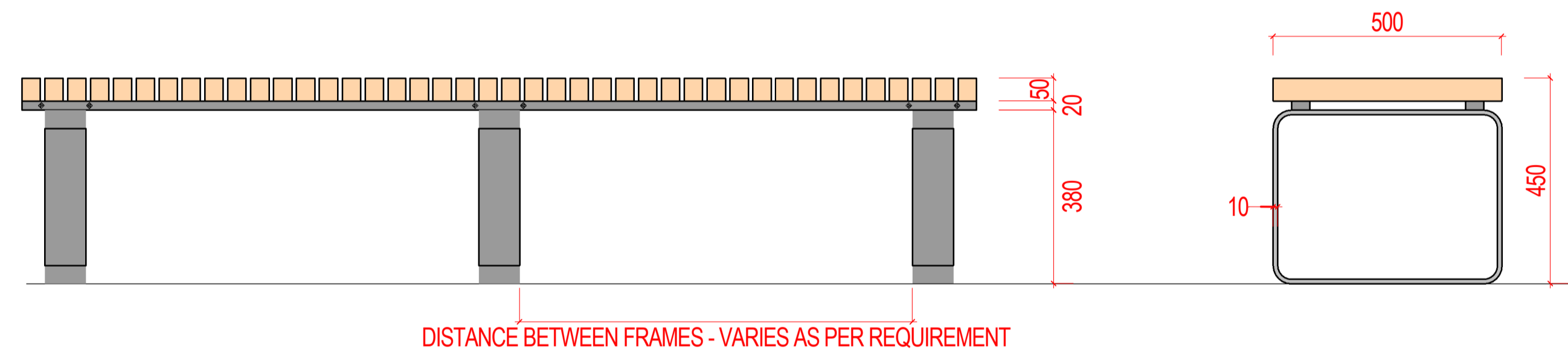


2 B2 - ELLIPTICAL WOODEN SEAT - DETAIL BENCH PLAN
1:10 @A1



3 SECTION
1:10 @A1

* ALL FOOTINGS TO LANDSCAPE FURNITURE TO BE INCLUDED IN BUILDER'S WORK



4 ELEVATION
1:10 @A1



REFERENCE IMAGE

* DETAIL FOR DESIGN INTENT ONLY
* DELEGATED DESIGN AND FABRICATION BY OMS LTD.

NOTE
ALL DIMENSIONS TO BE CHECKED ON SITE
NO DIMENSIONS TO BE SCALED FROM THIS DRAWING
THIS DRAWING IS TO BE READ IN CONJUNCTION WITH RELEVANT CONSULTANTS DRAWINGS
NO PART OF THIS DOCUMENT MAY BE REPRODUCED OR TRANSMITTED IN ANY FORM OR STORED IN ANY RETRIEVAL SYSTEM OF ANY NATURE WITHOUT THE WRITTEN PERMISSION OF THE LANDSCAPE ARCHITECT AS COPYRIGHT HOLDER EXCEPT AS AGREED FOR USE ON THE PROJECT FOR WHICH THE DOCUMENT WAS ORIGINALLY ISSUED.
FOR DRAWING INDEX, GENERAL NOTES, REFER TO DWG L1-001

CLIENT:

ADAMSTOWN STATION AND BOULEVARD LTD.

ARCHITECTS:

MDO ARCHITECTS

C1 FOR COMPLIANCE 03.2023

REVISIONS

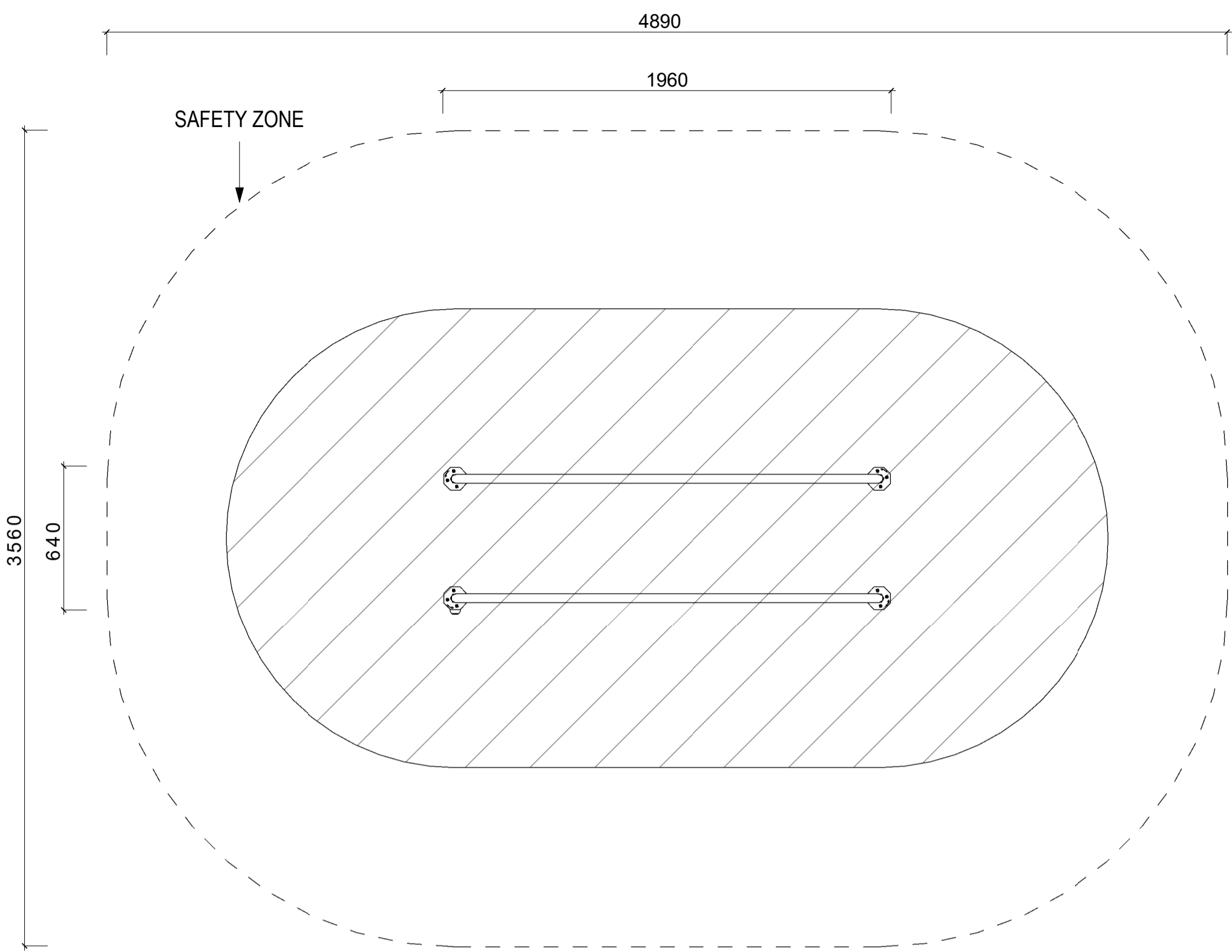
Job No.	23A2A	Drawn By	KFR
Dwg No.	L1-904-2	Checked By	JM
Scale	As indicated @A1	Date	MARCH 2023

JOB DESCRIPTION

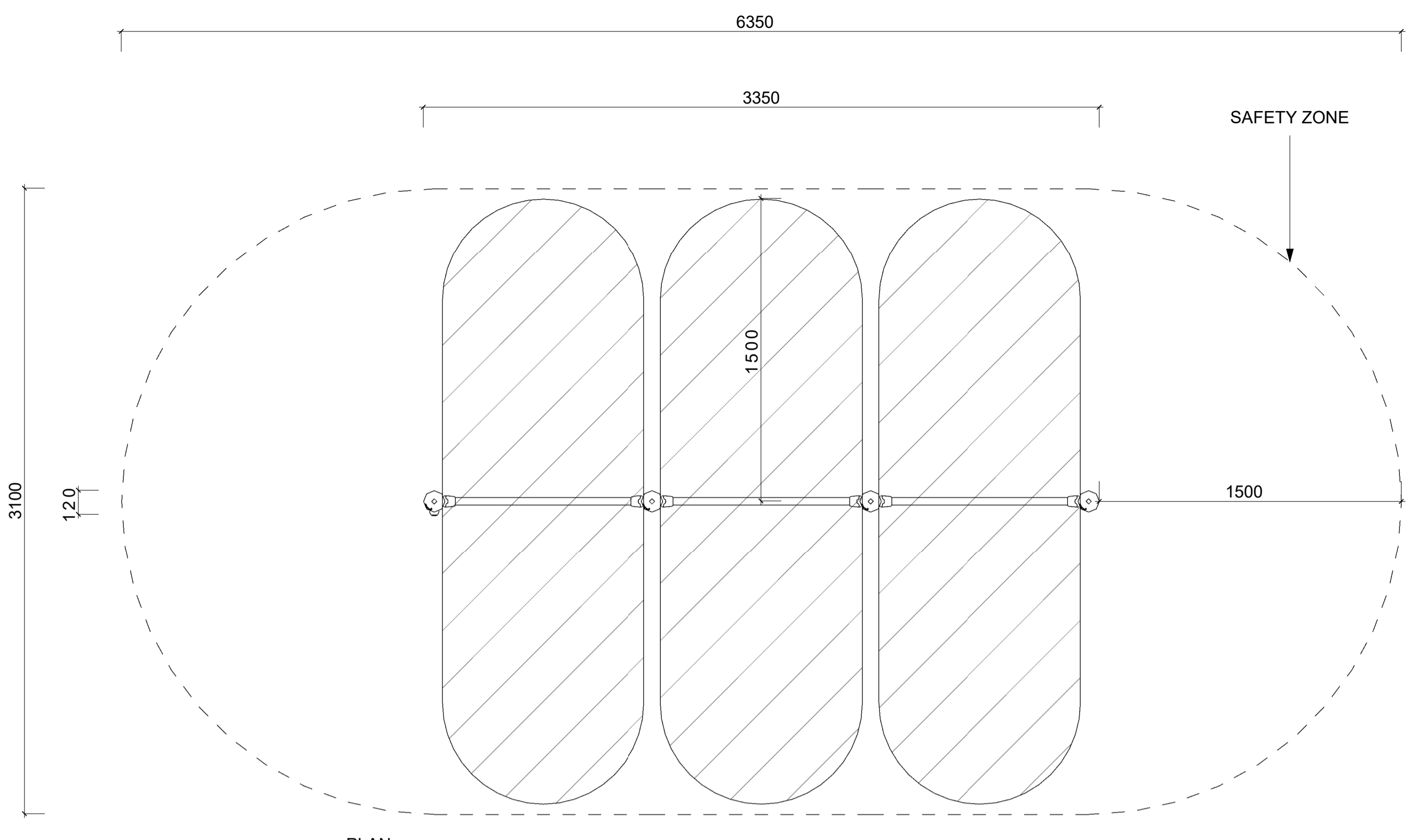
Site	ADAMSTOWN BOULEVARD
Project	ADAMSTOWN BOULEVARD - COMPLIANCE NO. 15.C.(iv)
Title	LANDSCAPE ELEMENTS & FURNITURE DETAILS - SHEET 2 OF 2



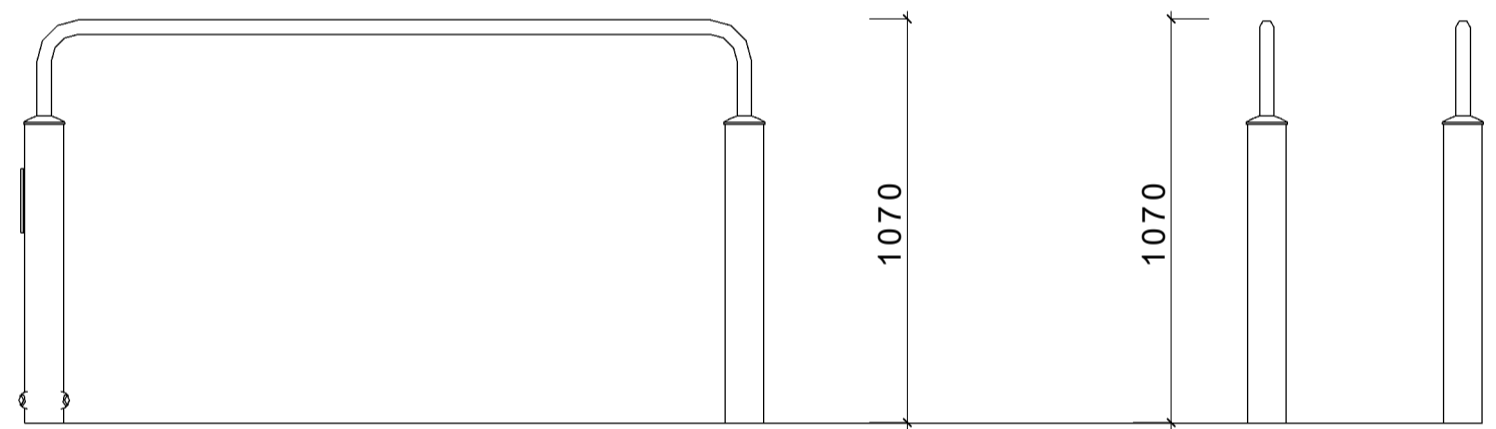
Architects 33 Rock Road, Williamstown, Blackrock, Co. Dublin
Telephones : 2121 800 Fax : 2121 007 E mail : info@nmp.ie



PLAN



PLAN



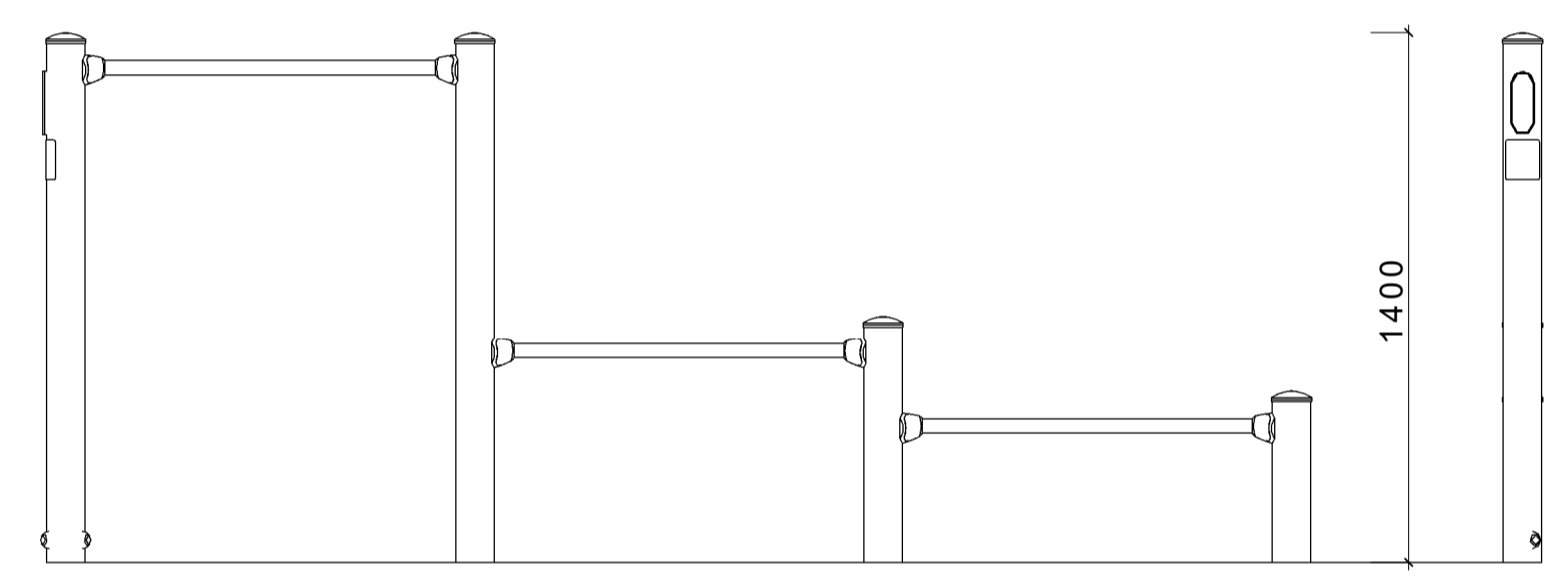
ELEVATIONS

*COORDINATION OF LOCATIONS IN ABEYANCE
 *ALL FOOTINGS TO LANDSCAPE FURNITURE TO BE INCLUDED INBUILDER'S WORK
 *SUPPLIER: KOMPAN
 *PRODUCT NAME: PARALLEL BARS
 *PRODUCT NUMBER: FSW201

1 PARALLEL BARS
 1:20 @A1



REFERENCE IMAGE



ELEVATIONS

*COORDINATION OF LOCATIONS IN ABEYANCE
 *ALL FOOTINGS TO LANDSCAPE FURNITURE TO BE INCLUDED INBUILDER'S WORK
 *SUPPLIER: KOMPAN
 *PRODUCT NAME: PUSH UP BARS
 *PRODUCT NUMBER: FSW209

2 PUSH UP BARS
 1:20 @A1



REFERENCE IMAGE

NOTE
 ALL DIMENSIONS TO BE CHECKED ON SITE
 NO DIMENSIONS TO BE SCALED FROM THIS DRAWING
 THIS DRAWING IS TO BE READ IN CONJUNCTION WITH RELEVANT CONSULTANTS DRAWINGS
 NO PART OF THIS DOCUMENT MAY BE REPRODUCED OR TRANSMITTED IN ANY FORM OR STORED IN ANY RETRIEVAL SYSTEM OF ANY NATURE WITHOUT THE WRITTEN PERMISSION OF THE LANDSCAPE ARCHITECT AS COPYRIGHT HOLDER EXCEPT AS AGREED FOR USE ON THE PROJECT FOR WHICH THE DOCUMENT WAS ORIGINALLY ISSUED.
 FOR DRAWING INDEX, GENERAL NOTES, REFER TO DWG L1-001

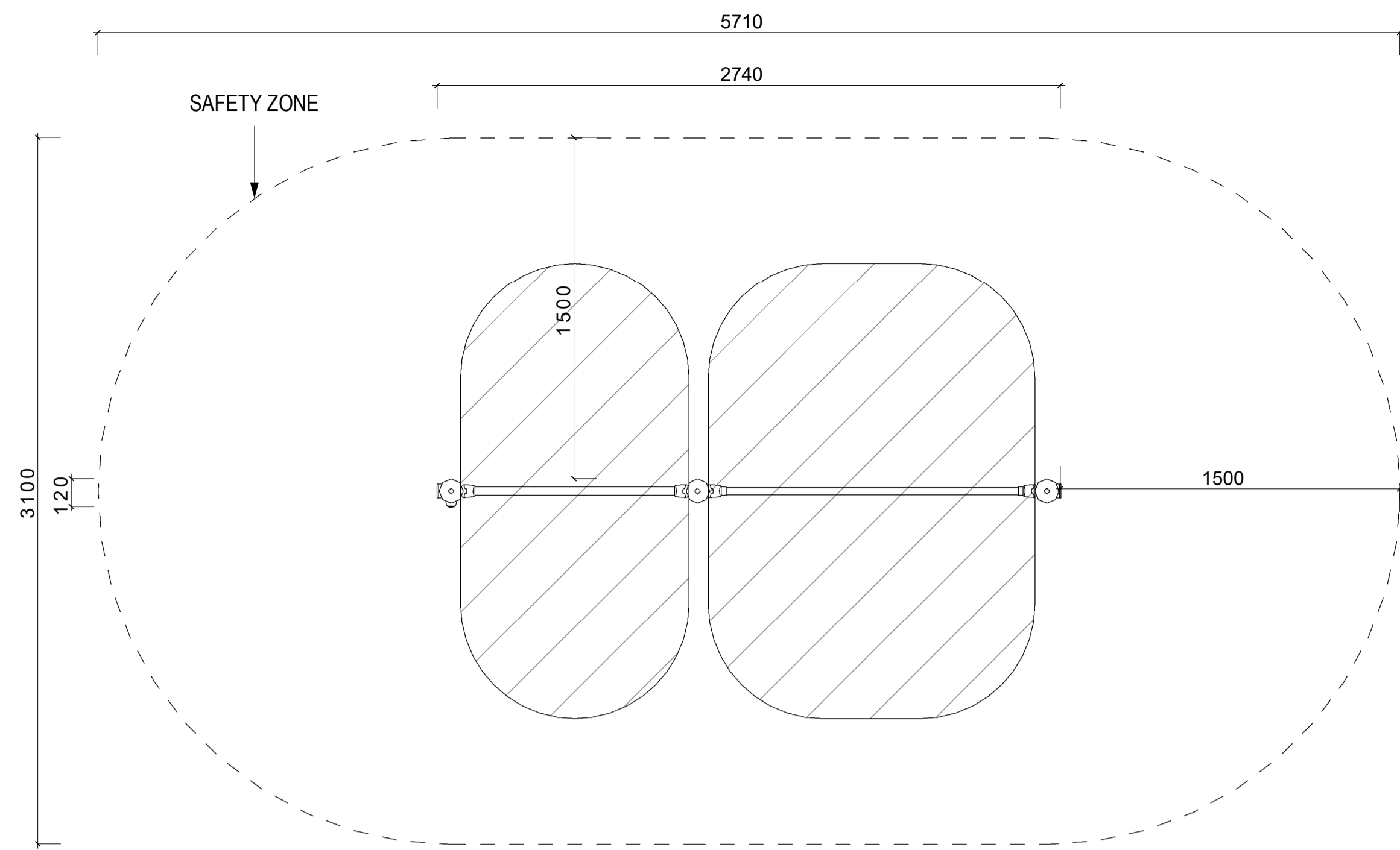
CLIENT:
ADAMSTOWN STATION AND BOULEVARD LTD.

ARCHITECTS:
MDO ARCHITECTS

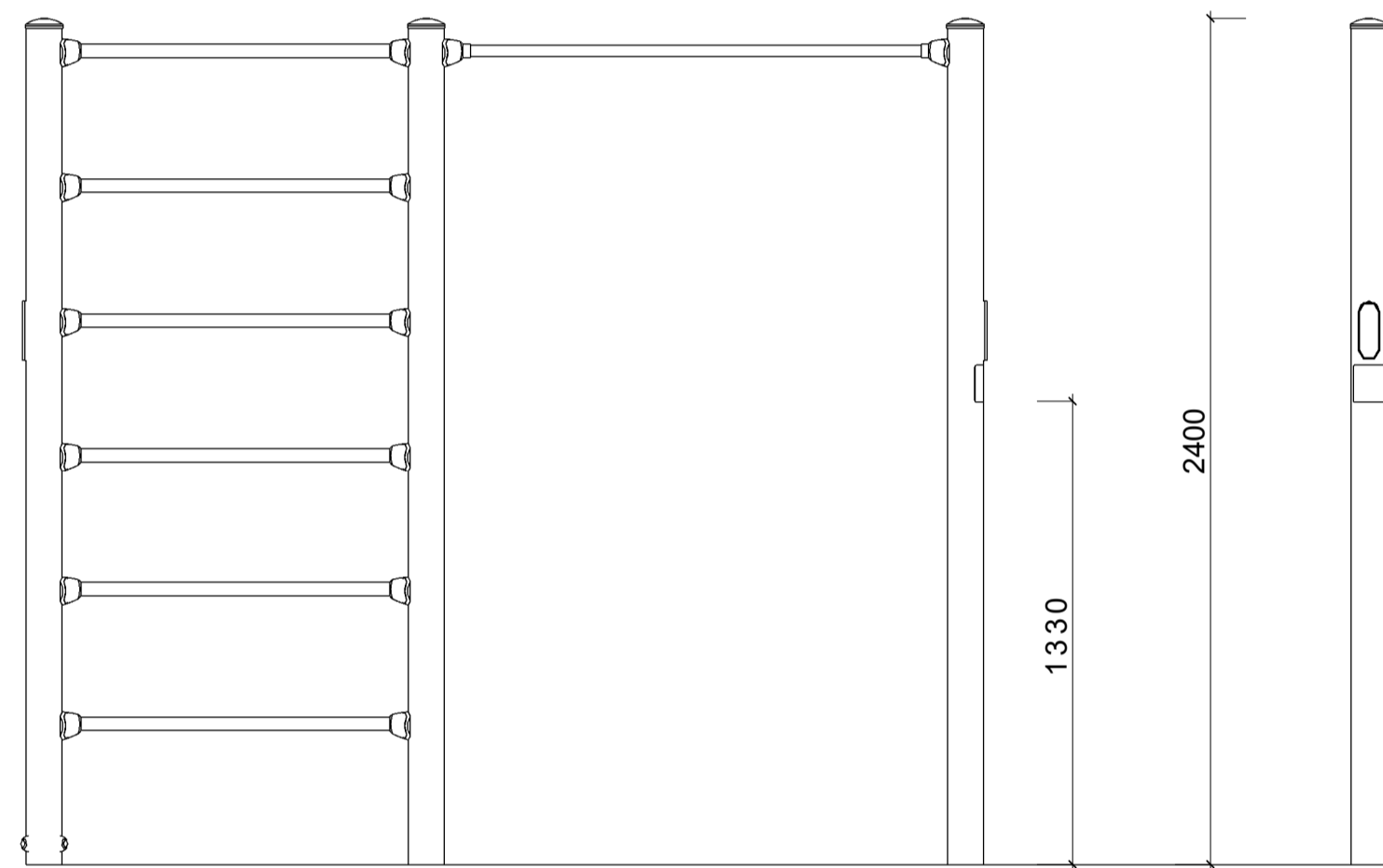
C1 FOR COMPLIANCE 03.2023

REVISIONS			
Job No.	23A2A	Drawn By	KR
Dwg No.	L1-907-1	Checked By	JM
Scale	1:20 @A1	Date	MARCH 2022

JOB DESCRIPTION	
Site	ADAMSTOWN BOULEVARD
Project	ADAMSTOWN BOULEVARD - COMPLIANCE NO. 15.C.(iv)
Title	OUTDOOR EXERCISE EQUIPMENT - SHEET 1 OF 1



PLAN



ELEVATIONS

1 PULL UP STATION
1:20 @A1



REFERENCE IMAGE

*COORDINATION OF LOCATIONS IN ABEYANCE
*ALL FOOTINGS TO LANDSCAPE FURNITURE TO BE INCLUDED IN BUILDER'S WORK

*SUPPLIER: KOMPAN
*PRODUCT NAME: PULL UP STATION
*PRODUCT NUMBER: FSW208

NOTE
ALL DIMENSIONS TO BE CHECKED ON SITE
NO DIMENSIONS TO BE SCALED FROM THIS DRAWING
THIS DRAWING IS TO BE READ IN CONJUNCTION WITH RELEVANT CONSULTANTS DRAWINGS
NO PART OF THIS DOCUMENT MAY BE REPRODUCED OR TRANSMITTED IN ANY FORM OR STORED IN ANY RETRIEVAL SYSTEM OF ANY NATURE WITHOUT THE WRITTEN PERMISSION OF THE LANDSCAPE ARCHITECT AS COPYRIGHT HOLDER EXCEPT AS AGREED FOR USE ON THE PROJECT FOR WHICH THE DOCUMENT WAS ORIGINALLY ISSUED.
FOR DRAWING INDEX, GENERAL NOTES, REFER TO DWG L1-001

CLIENT:

ADAMSTOWN STATION AND BOULEVARD LTD.

ARCHITECTS:

MDO ARCHITECTS

C1	FOR COMPLIANCE	03.2023
----	----------------	---------

REVISIONS

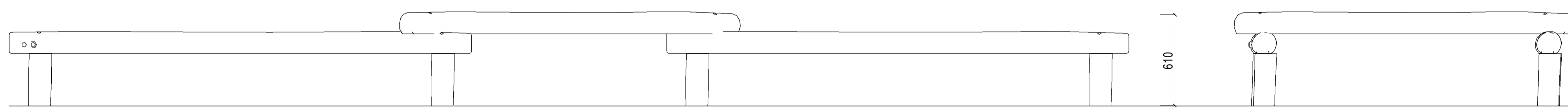
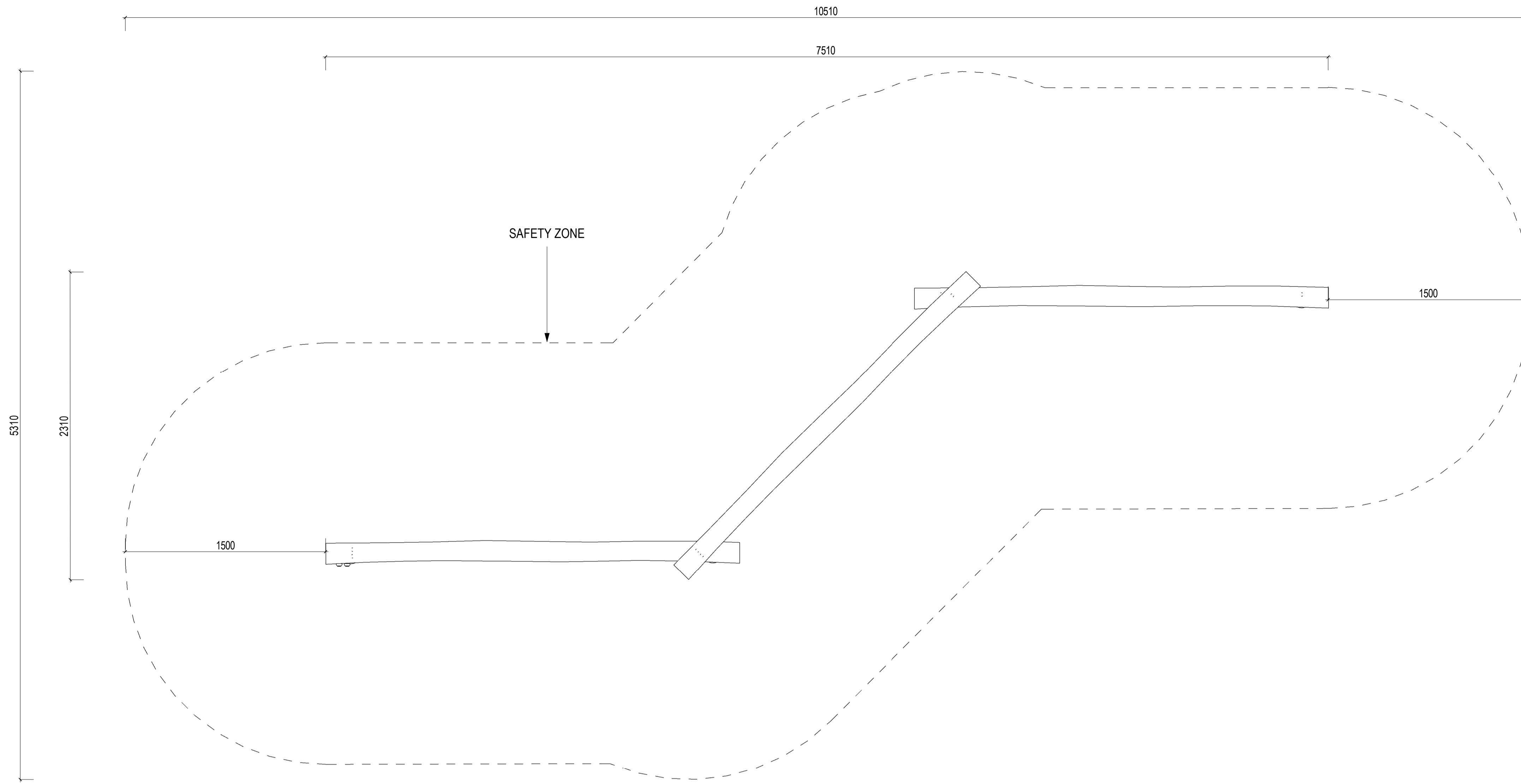
Job No.	23A2A	Drawn By	KR
Dwg No.	L1-907-2	Checked By	JM
Scale	1:20 @A1	Date	MARCH 2022

JOB DESCRIPTION

Site	ADAMSTOWN BOULEVARD
Project	ADAMSTOWN BOULEVARD - COMPLIANCE NO. 15.C.(iv)
Title	OUTDOOR EXERCISE EQUIPMENT - SHEET 2 OF 2



NMP
Niall Montgomery + Partners



1 TRIPLE BALANCE BEAM
1:20 @A1

*COORDINATION OF LOCATIONS IN ABEYANCE
*ALL FOOTINGS TO LANDSCAPE FURNITURE TO BE INCLUDED IN BUILDER'S WORK

*SUPPLIER: KOMPAN
*PRODUCT NAME: TRIPLE BALANCE BEAM
*PRODUCT NUMBER: NRO804



REFERENCE IMAGE

NOTE
ALL DIMENSIONS TO BE CHECKED ON SITE
NO DIMENSIONS TO BE SCALED FROM THIS DRAWING
THIS DRAWING IS TO BE READ IN CONJUNCTION WITH RELEVANT CONSULTANTS DRAWINGS
NO PART OF THIS DOCUMENT MAY BE REPRODUCED OR TRANSMITTED IN ANY FORM OR STORED IN ANY RETRIEVAL SYSTEM OF ANY NATURE WITHOUT THE WRITTEN PERMISSION OF THE LANDSCAPE ARCHITECT AS COPYRIGHT HOLDER EXCEPT AS AGREED FOR USE ON THE PROJECT FOR WHICH THE DOCUMENT WAS ORIGINALLY ISSUED.
FOR DRAWING INDEX, GENERAL NOTES, REFER TO DWG L1-001

CLIENT:

ADAMSTOWN STATION AND BOULEVARD LTD.

ARCHITECTS:

MDO ARCHITECTS

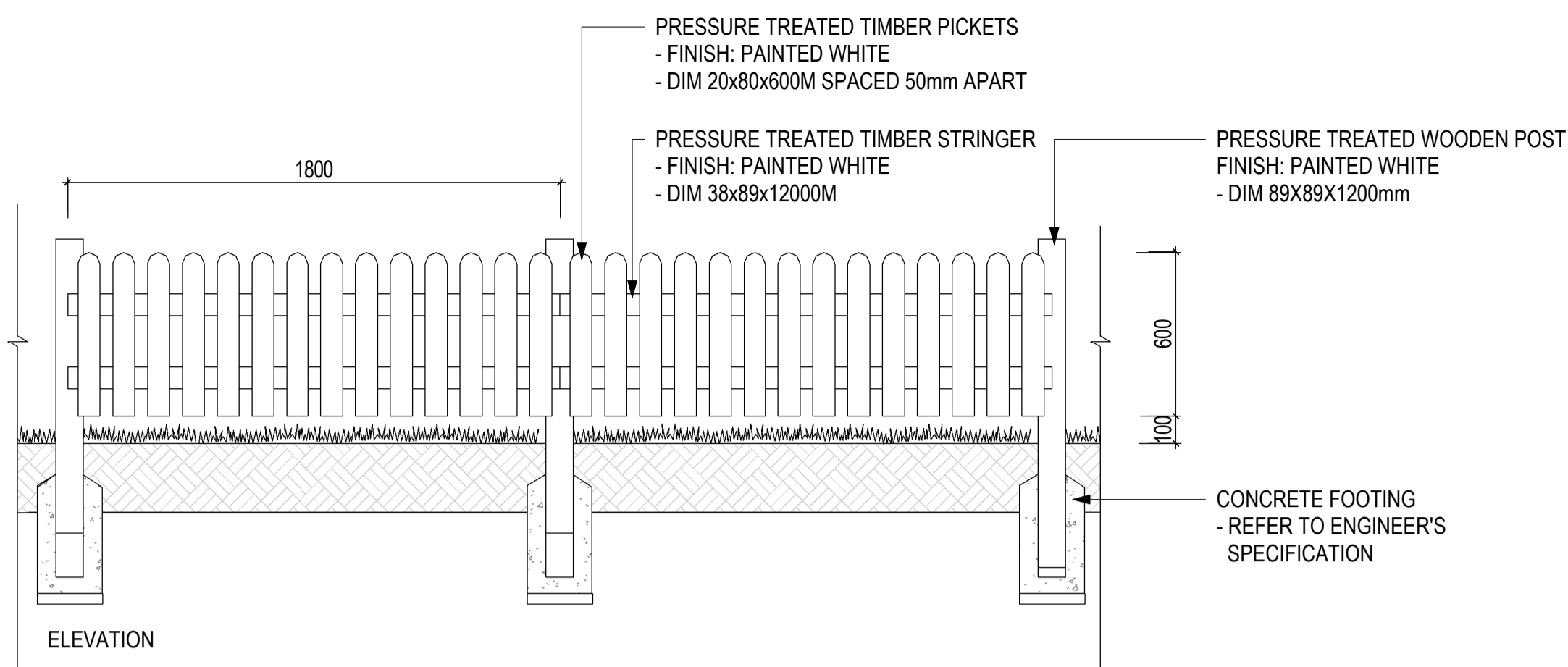
C1 FOR COMPLIANCE 03.2023

REVISIONS

Job No.	23A2A	Drawn By	KFR
Dwg No.	L1-907-3	Checked By	JM
Scale	1:20 @A1	Date	MARCH 2023

JOB DESCRIPTION

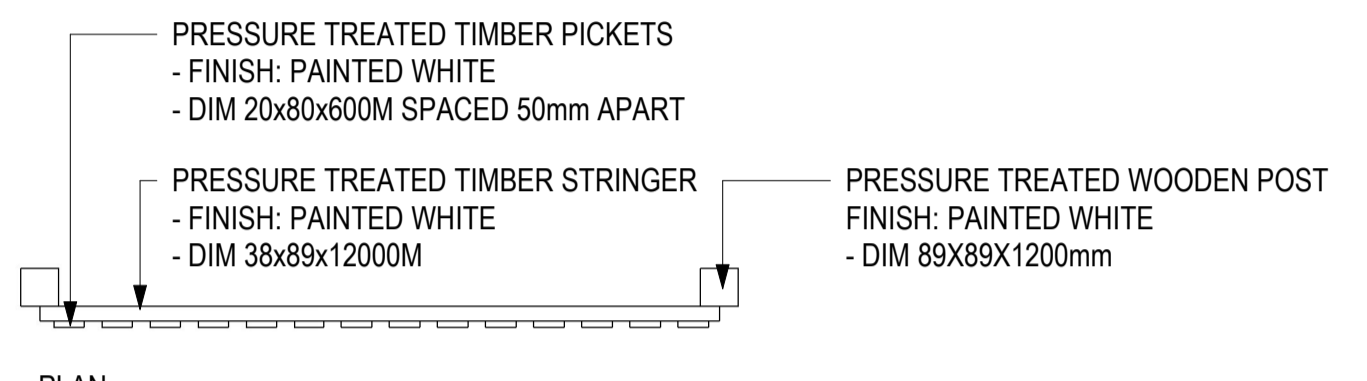
Site	ADAMSTOWN BOULEVARD
Project	ADAMSTOWN BOULEVARD - COMPLIANCE NO. 15.C.(iv)
Title	PLAY EQUIPMENT - SHEET 1 OF 3



1 TYPICAL DETAIL: W9 - WHITE PICKET FENCE
1:20 @A1



REFERENCE IMAGE

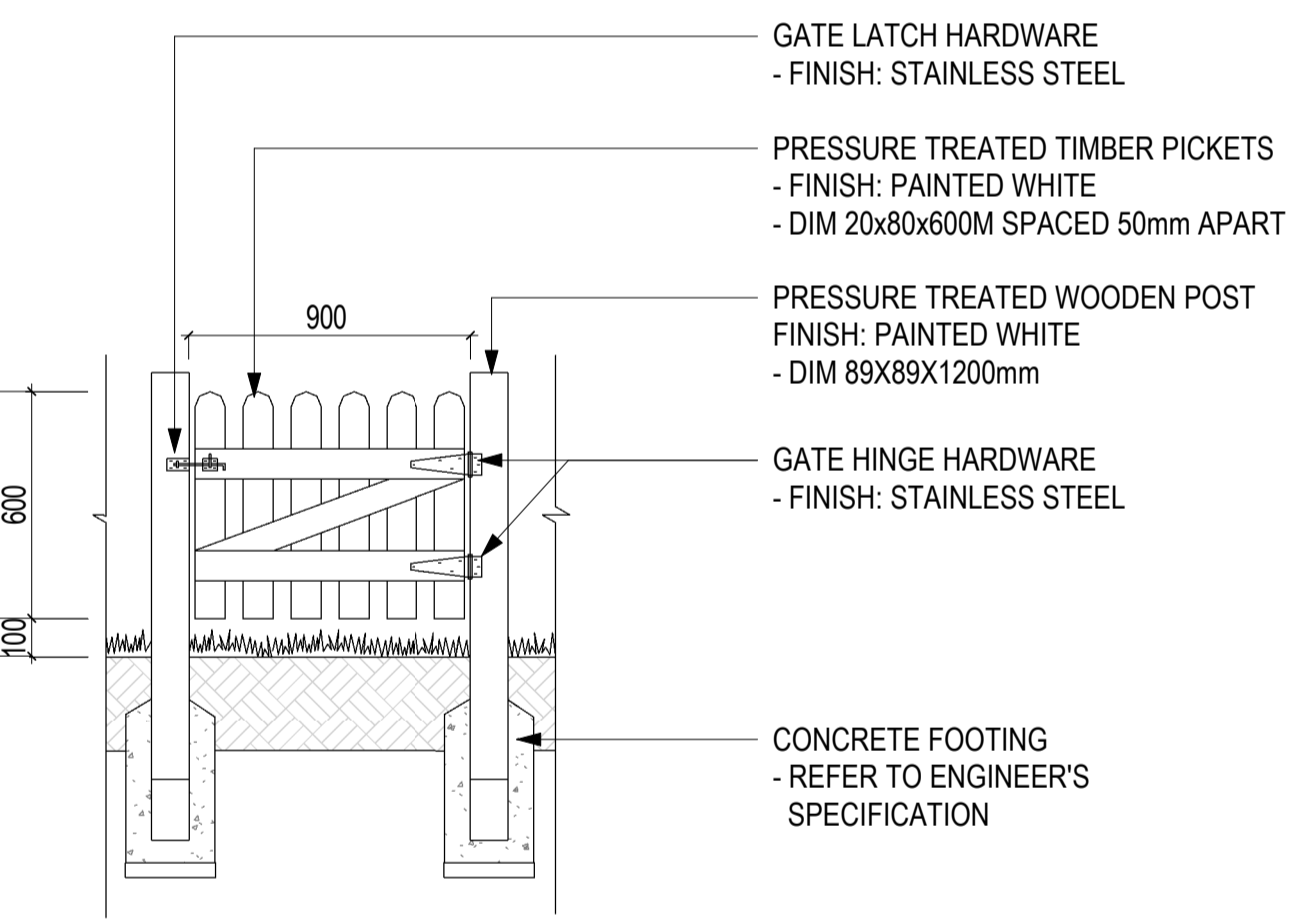


PLAN

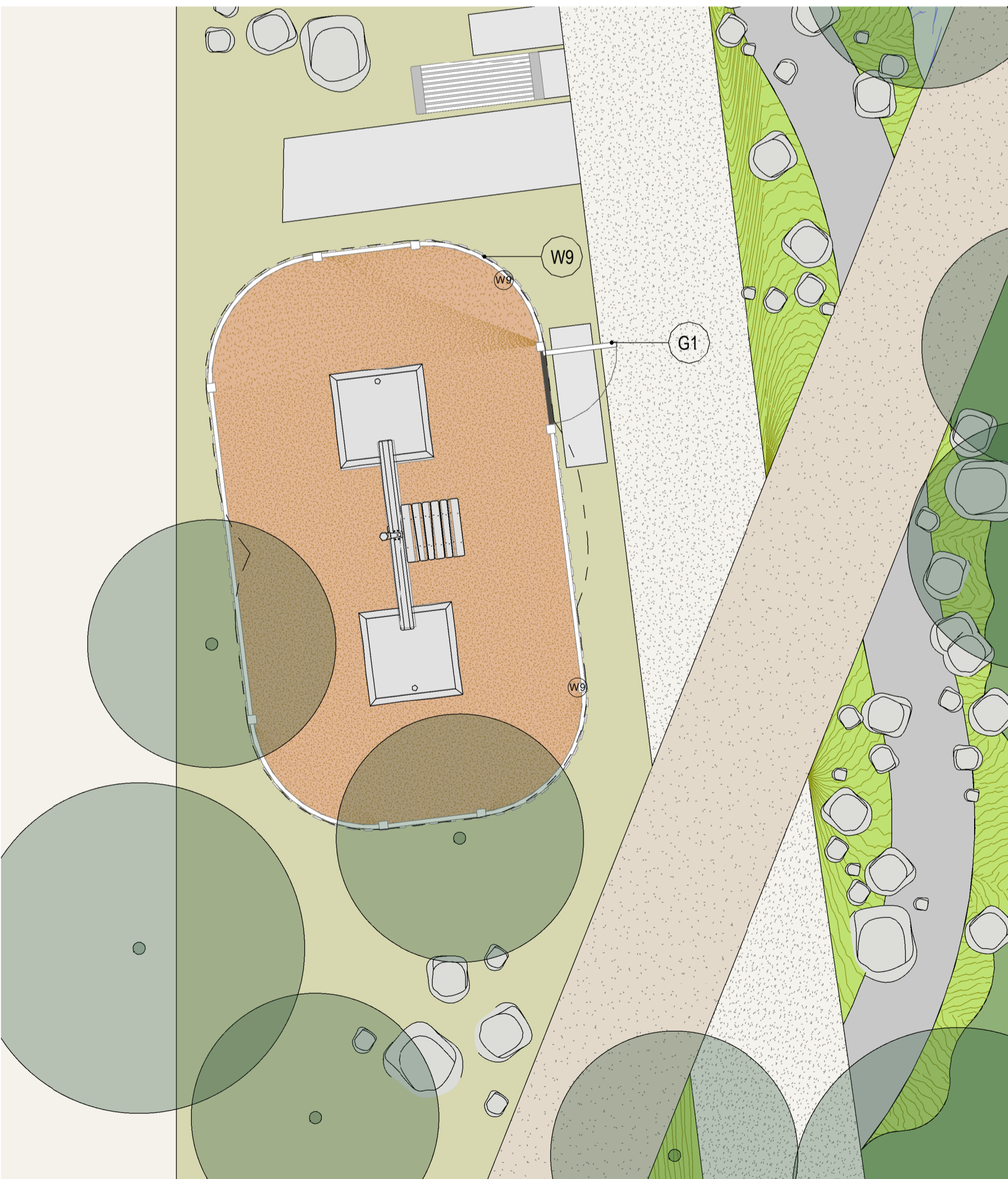
- * ALL NAILS AND HARDWARE TO BE STAINLESS STEEL
- * PICKETS TO BE HUNG WITH UNIFORM HEIGHT AND SPACING
- * FENCE TO BE PAINTED OR STAINED PER SPECIFICATION
- * WOOD POST AND STRINGERS TO BE PRESSURE TREATED PINE GRADE C OR BETTER



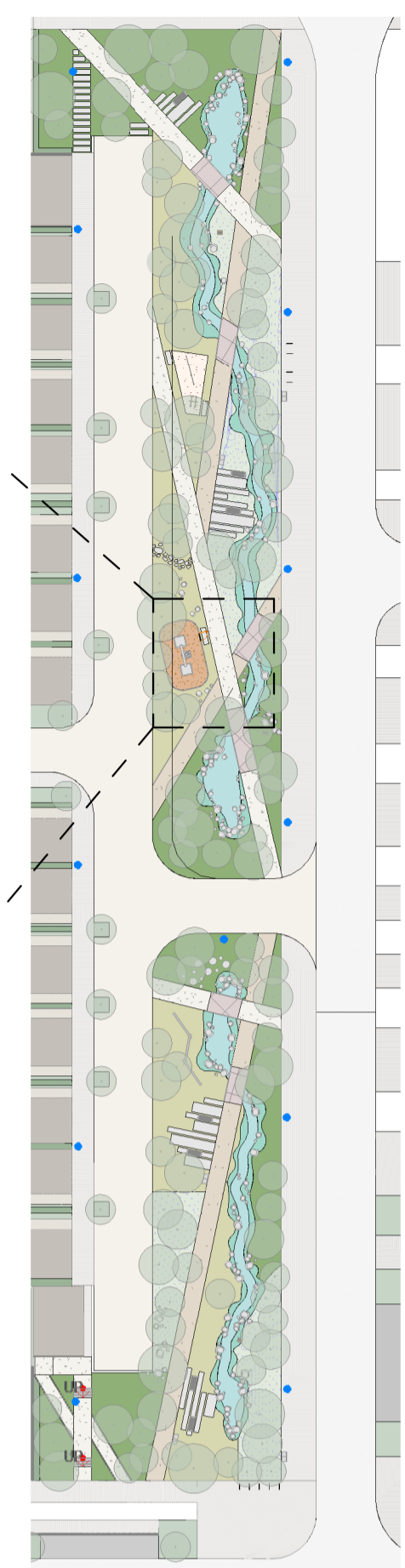
3 NATURAL PLAY 1 OF 2
1:50 @A1



2 TYPICAL DETAIL: G1 - WHITE PICKET FENCE GATE
1:20 @A1



4 NATURAL PLAY 2 OF 2
1:50 @A1



5 LINEAR PARK
1:650 @A1

NOTE
ALL DIMENSIONS TO BE CHECKED ON SITE
NO DIMENSIONS TO BE SCALED FROM THIS DRAWING
THIS DRAWING IS TO BE READ IN CONJUNCTION WITH RELEVANT CONSULTANTS DRAWINGS
NO PART OF THIS DOCUMENT MAY BE RE-PRODUCED OR TRANSMITTED IN ANY FORM OR STORED IN ANY RETRIEVAL SYSTEM OF ANY NATURE WITHOUT THE WRITTEN PERMISSION OF THE LANDSCAPE ARCHITECT AS COPYRIGHT HOLDER EXCEPT AS AGREED FOR USE ON THE PROJECT FOR WHICH THE DOCUMENT WAS ORIGINALLY ISSUED.
FOR DRAWING INDEX, GENERAL NOTES, REFER TO DWG L1-001

CLIENT:

ADAMSTOWN STATION AND BOULEVARD LTD.

ARCHITECTS:

MDO ARCHITECTS

C1	FOR COMPLIANCE	03.2023
----	----------------	---------

REVISIONS

Job No.	23A2A	Drawn By	KR
Dwg No.	L1-907-5	Checked By	JM
Scale	As indicated @A1	Date	MARCH 2023

JOB DESCRIPTION

Site	ADAMSTOWN BOULEVARD
Project	ADAMSTOWN BOULEVARD - COMPLIANCE NO. 15.C (iv)
Title	PLAY EQUIPMENT - SHEET 3 OF 3