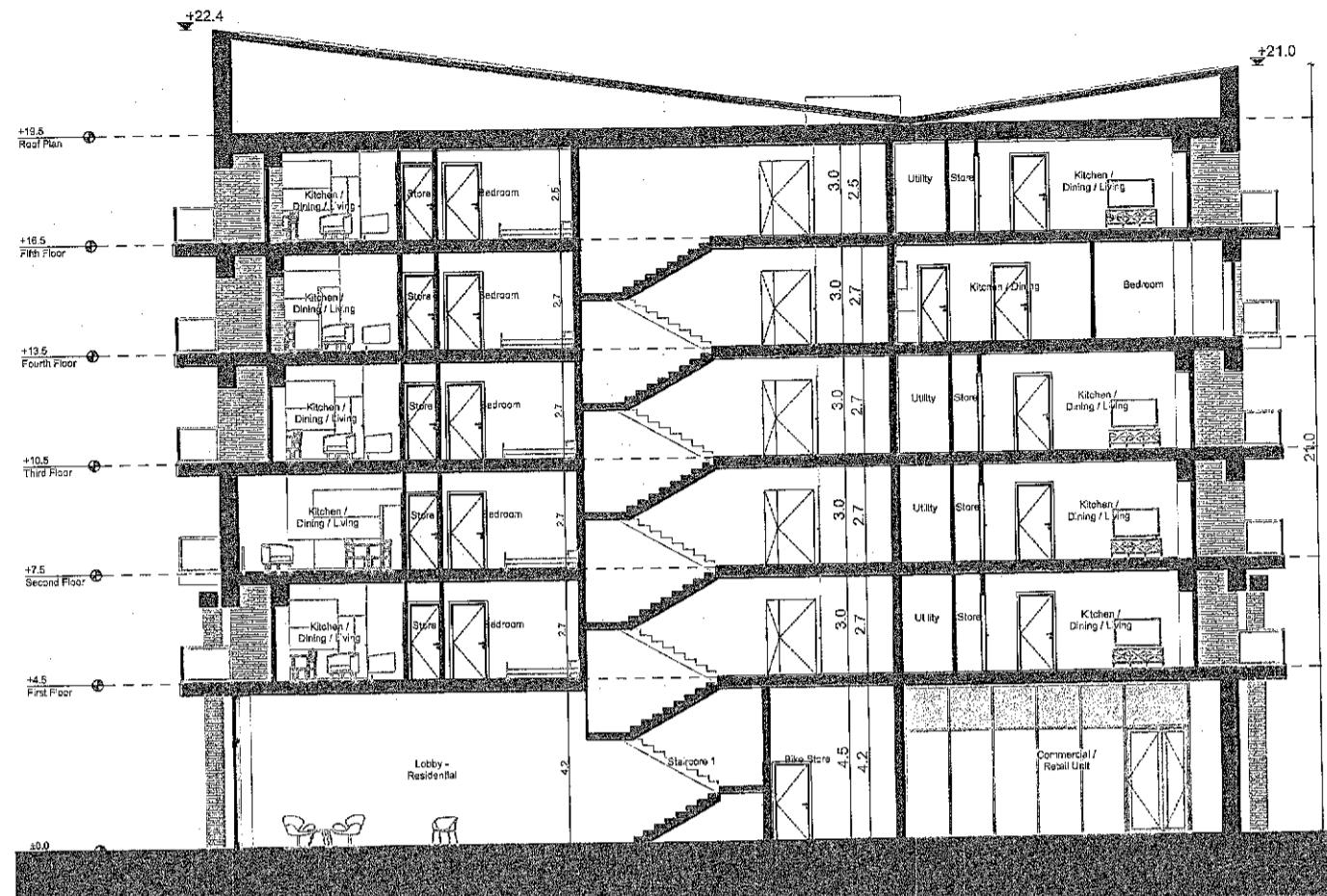
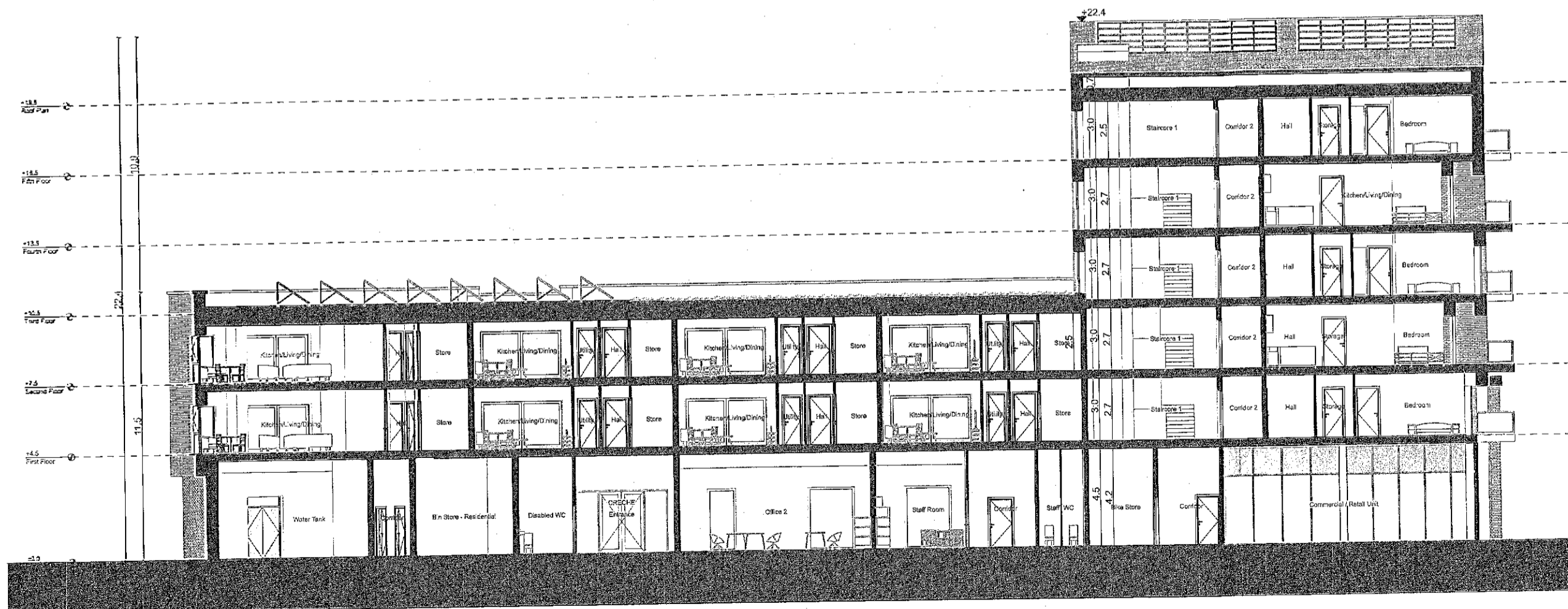




Section 1-1



Section 2-2



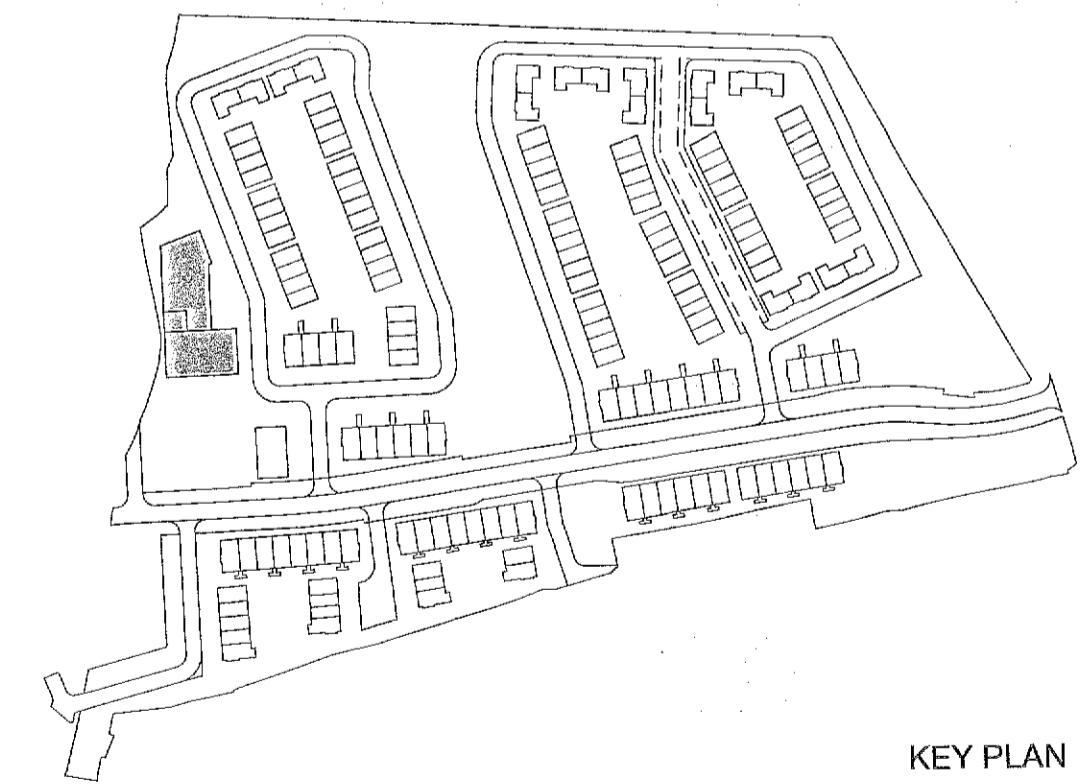
Section 3-3

Notes

Do not scale from this drawing.
 Use figured dimensions only.
 All errors and omissions to be reported to the Architect.
 This drawing is to be read in conjunction with relevant consultant's drawings.
 All dimensions are in millimetres and all levels are in meters to match Datums unless otherwise noted.

This drawing is for planning purposes only and not for construction.
 This drawing or design may not be reproduced without permission.

NOTES ON FINISHES:	
ROOF:	CAPPING TO BE ALUMINIUM POWDER COATED TO SELECTED COLOUR.
WALLS:	SELECTED CLAY BRICKWORK WHERE INDICATED OTHERWISE SELECTED SELF-COLOURED RENDER
JOINERY:	ALL WINDOWS AND DOORS, FRAMES AND LEAFS TO BE ALUMINIUM POWDER COATED TO APPROVED COLOUR OR UPVC OR PAINTED TIMBER TO APPROVED COLOUR. OBSCURE GLAZING WHERE INDICATED TO SENSITIVE WINDOWS.
RAINWATER GOODS:	GUTTERS, DOWNPIPES AND FIXINGS TO BE uPVC OR ALUMINIUM POWDER COATED TO SELECTED COLOUR TO MATCH ROOF CAPPING.
SOLAR PANELS:	INDICATIVE SOLAR PANEL POSITION, FINAL SOLAR PANEL POSITION DEPENDS ON HOUSE ORIENTATION. THE SOLAR PANELS INDICATED ARE A PROVISIONAL OPTION TO SATISFY RENEWABLE ENERGY REQUIREMENTS OF BUILDING REGULATIONS PART L. SOLAR PANELS MAY BE OMITTED IN FAVOUR OF ALTERNATIVE RENEWABLE ENERGY OPTIONS.



Planning Application
 - Clarification of Additional Information

DAVEY & SMITH
 ARCHITECTS

DAVEY & SMITH ARCHITECTS 13 SEAPPOINT BUILDING, 44/45 CLONTARF ROAD, CLONTARF, DUBLIN 3 PH: 01 2447638 EMAIL: info@davey-smith.com WEB: www.davey-smith.com	
Layout ID: PH 007 - Apartment Block A-	Scale: 1:200
Project: Clonburris, K1	Job No: 2004
Drawing Name: Sections	Series: PLANNING
	Date: 28/03/2023
	Status: Clarification of Additional Information

THIS DRAWING TO BE READ IN CONJUNCTION WITH RELEVANT CONSULTANTS DRAWINGS - NOTIFY ARCHITECTS OF ANY DISCREPANCIES - CHECK DIMENSIONS ON-SITE - USE FIGURE DIMENSIONS ONLY - COPYRIGHT RESERVED FOR DAVEY & SMITH ARCHITECTS LTD.