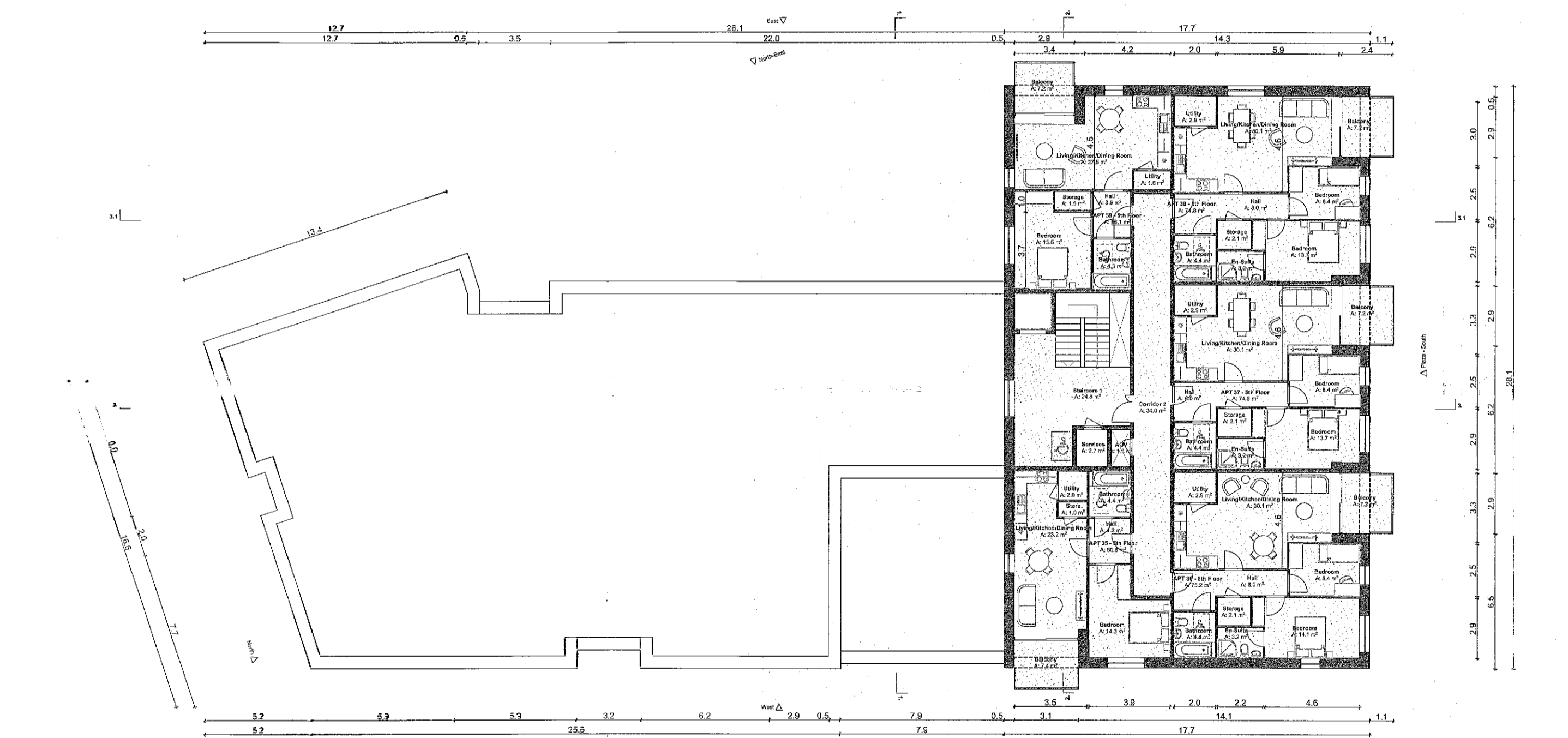
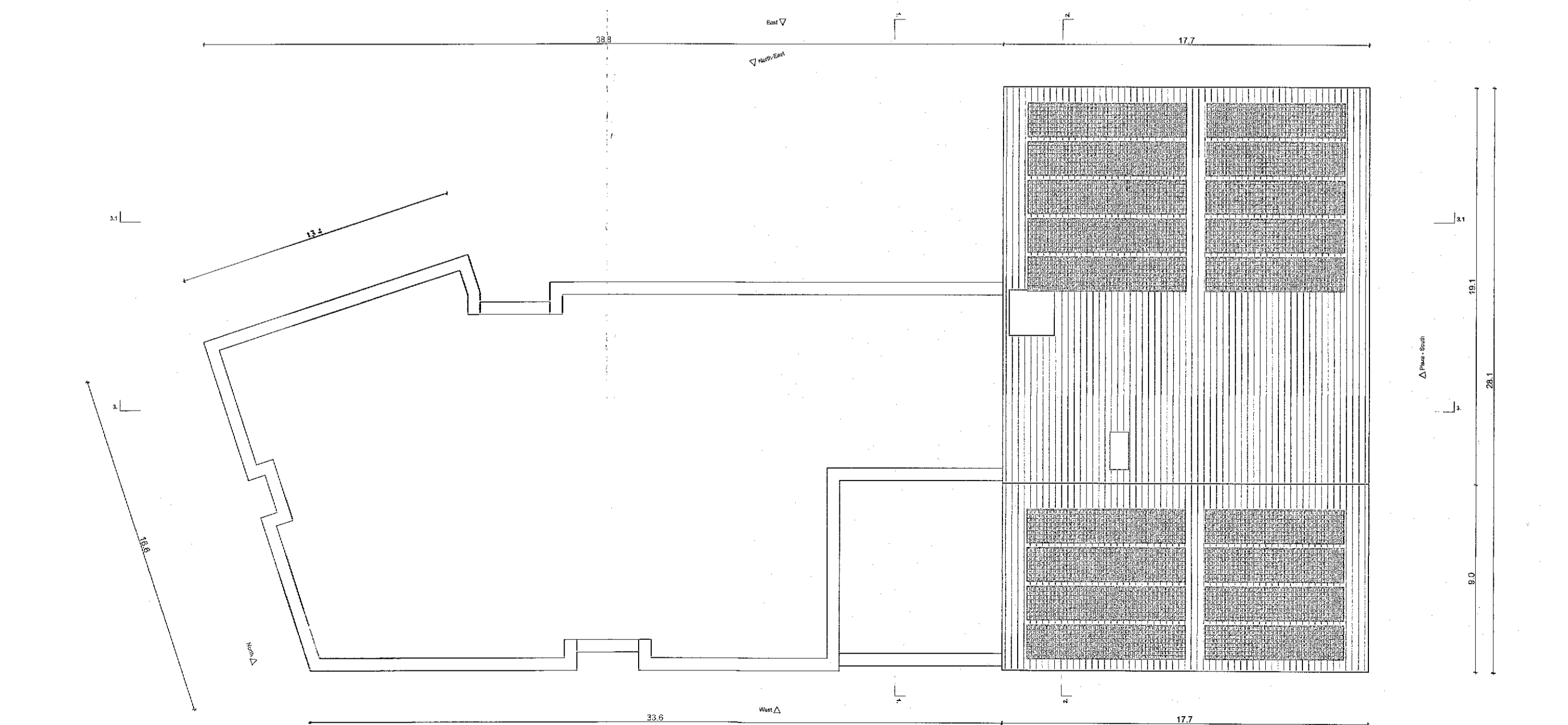


Fourth Floor



Fifth Floor



Roof Plan

Apartment 30		
Gross Internal Area		
Area Type	Proposed Area	DoHPCLG Area Min.
1 Bed Unit / 2 Person	50.8 m <sup>2</sup>	45.0 m <sup>2</sup>
Space Provision & Room Sizes		
Area Type	Proposed Area	DoHPCLG Area Min.
Aggregate Bedroom Area	13.6 m <sup>2</sup>	11.4 m <sup>2</sup>
Aggregate Living Area	27.0 m <sup>2</sup>	23.0 m <sup>2</sup>
Storage Provision		
Area Type	Proposed Area	DoHPCLG Area Min.
Storage	3.1 m <sup>2</sup>	3.0 m <sup>2</sup>

Apartment 35		
Gross Internal Area		
Area Type	Proposed Area	DoHPCLG Area Min.
1 Bed Unit / 2 Person	50.8 m <sup>2</sup>	45.0 m <sup>2</sup>
Space Provision & Room Sizes		
Area Type	Proposed Area	DoHPCLG Area Min.
Aggregate Bedroom Area	14.3 m <sup>2</sup>	11.4 m <sup>2</sup>
Aggregate Living Area	23.2 m <sup>2</sup>	23.0 m <sup>2</sup>
Storage Provision		
Area Type	Proposed Area	DoHPCLG Area Min.
Storage	3.0 m <sup>2</sup>	3.0 m <sup>2</sup>

Apartment 31 & 32		
Gross Internal Area		
Area Type	Proposed Area	DoHPCLG Area Min.
2 Bed Unit / 3 Person	75.2 m <sup>2</sup>	63.0 m <sup>2</sup>
Space Provision & Room Sizes		
Area Type	Proposed Area	DoHPCLG Area Min.
Aggregate Bedroom Area	22.1 m <sup>2</sup>	20.1 m <sup>2</sup>
Aggregate Living Area	30.1 m <sup>2</sup>	28.0 m <sup>2</sup>
Storage Provision		
Area Type	Proposed Area	DoHPCLG Area Min.
Storage	5.0 m <sup>2</sup>	5.0 m <sup>2</sup>

Apartment 33		
Gross Internal Area		
Area Type	Proposed Area	DoHPCLG Area Min.
2 Bed Unit / 3 Person	75.2 m <sup>2</sup>	63.0 m <sup>2</sup>
Space Provision & Room Sizes		
Area Type	Proposed Area	DoHPCLG Area Min.
Aggregate Bedroom Area	22.5 m <sup>2</sup>	20.1 m <sup>2</sup>
Aggregate Living Area	30.1 m <sup>2</sup>	28.0 m <sup>2</sup>
Storage Provision		
Area Type	Proposed Area	DoHPCLG Area Min.
Storage	5.0 m <sup>2</sup>	5.0 m <sup>2</sup>

Apartment 36		
Gross Internal Area		
Area Type	Proposed Area	DoHPCLG Area Min.
2 Bed Unit / 3 Person	75.2 m <sup>2</sup>	63.0 m <sup>2</sup>
Space Provision & Room Sizes		
Area Type	Proposed Area	DoHPCLG Area Min.
Aggregate Bedroom Area	22.5 m <sup>2</sup>	20.1 m <sup>2</sup>
Aggregate Living Area	30.1 m <sup>2</sup>	28.0 m <sup>2</sup>
Storage Provision		
Area Type	Proposed Area	DoHPCLG Area Min.
Storage	5.0 m <sup>2</sup>	5.0 m <sup>2</sup>

Apartment 37 & 38		
Gross Internal Area		
Area Type	Proposed Area	DoHPCLG Area Min.
2 Bed Unit / 3 Person	74.8 m <sup>2</sup>	63.0 m <sup>2</sup>
Space Provision & Room Sizes		
Area Type	Proposed Area	DoHPCLG Area Min.
Aggregate Bedroom Area	22.1 m <sup>2</sup>	20.1 m <sup>2</sup>
Aggregate Living Area	30.1 m <sup>2</sup>	28.0 m <sup>2</sup>
Storage Provision		
Area Type	Proposed Area	DoHPCLG Area Min.
Storage	5.0 m <sup>2</sup>	5.0 m <sup>2</sup>

Apartment 34		
Gross Internal Area		
Area Type	Proposed Area	DoHPCLG Area Min.
1 Bed Unit / 2 Person	53.0 m <sup>2</sup>	45.0 m <sup>2</sup>
Space Provision & Room Sizes		
Area Type	Proposed Area	DoHPCLG Area Min.
Aggregate Bedroom Area	13.6 m <sup>2</sup>	11.4 m <sup>2</sup>
Aggregate Living Area	27.2 m <sup>2</sup>	23.0 m <sup>2</sup>
Storage Provision		
Area Type	Proposed Area	DoHPCLG Area Min.
Storage	3.3 m <sup>2</sup>	3.0 m <sup>2</sup>

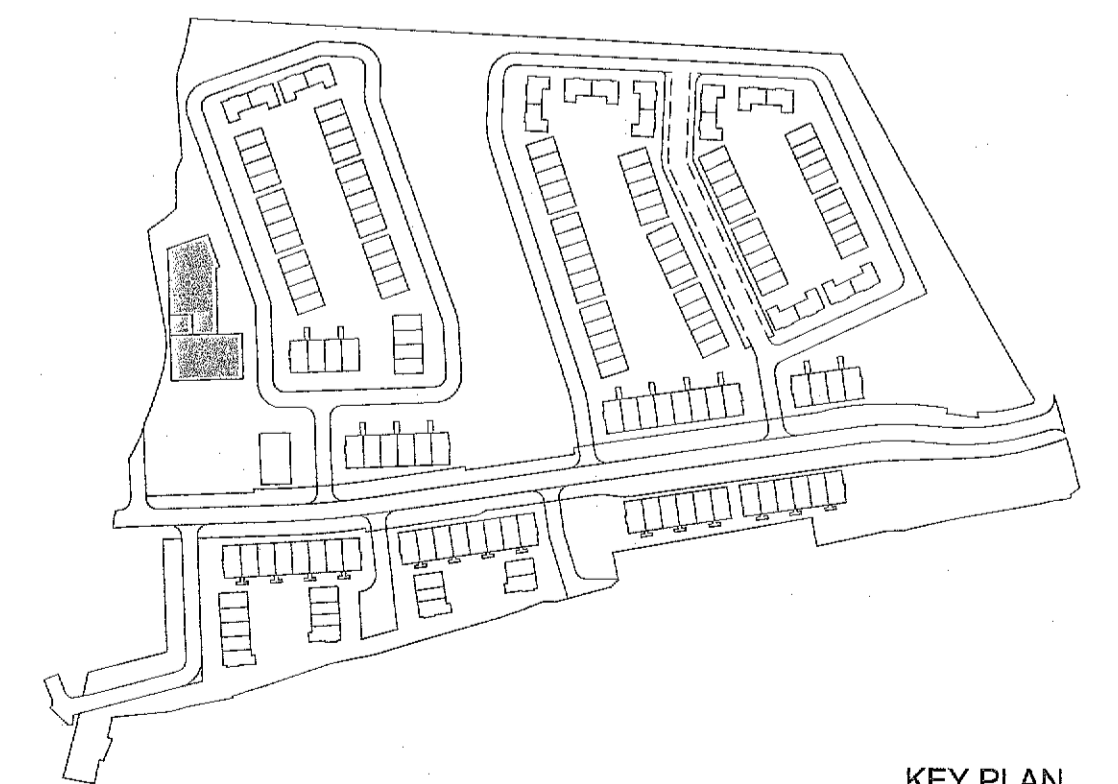
Apartment 39		
Gross Internal Area		
Area Type	Proposed Area	DoHPCLG Area Min.
1 Bed Unit / 2 Person	56.1 m <sup>2</sup>	45.0 m <sup>2</sup>
Space Provision & Room Sizes		
Area Type	Proposed Area	DoHPCLG Area Min.
Aggregate Bedroom Area	15.5 m <sup>2</sup>	11.4 m <sup>2</sup>
Aggregate Living Area	27.5 m <sup>2</sup>	23.0 m <sup>2</sup>
Storage Provision		
Area Type	Proposed Area	DoHPCLG Area Min.
Storage	3.2 m <sup>2</sup>	3.0 m <sup>2</sup>

Notes

Do not scale from this drawing.  
Use figured dimensions only.  
All errors and omissions to be reported to the Architect.  
This drawing is to be read in conjunction with relevant consultant's drawings.  
All dimensions are in millimetres and all levels are in meters to match Datums unless otherwise noted.

This drawing is for planning purposes only and not for construction.  
This drawing or design may not be reproduced without permission.

NOTES ON FINISHES:	
ROOF:	CAPPING TO BE ALUMINIUM POWDER COATED TO SELECTED COLOUR.
WALLS:	SELECTED CLAY BRICKWORK WHERE INDICATED OTHERWISE SELECTED SELF-COLOURED RENDER
JOINERY:	ALL WINDOWS AND DOORS, FRAMES AND LEAFS TO BE ALUMINIUM POWDER COATED TO APPROVED COLOUR OR UPVC OR PAINTED TIMBER TO APPROVED COLOUR. OBSCURE GLAZING WHERE INDICATED TO SENSITIVE WINDOWS.
RAINWATER GOODS:	GUTTERS, DOWNPIPES AND FIXINGS TO BE uPVC OR ALUMINIUM POWDER COATED TO SELECTED COLOUR TO MATCH ROOF CAPPING.
SOLAR PANELS:	INDICATIVE SOLAR PANEL POSITION, FINAL SOLAR PANEL POSITION DEPENDS ON HOUSE ORIENTATION. THE SOLAR PANELS INDICATED ARE A PROVISIONAL OPTION TO SATISFY RENEWABLE ENERGY REQUIREMENTS OF BUILDING REGULATIONS PART L. SOLAR PANELS MAY BE OMITTED IN FAVOUR OF ALTERNATIVE RENEWABLE ENERGY OPTIONS.



KEY PLAN

	<b>Planning Application</b> - Clarification of Additional Information	<b>DAVEY + SMITH</b> ARCHITECTS
<small>DAVEY + SMITH ARCHITECTS   13 SEAPORT BUILDING, 44-45 CLONTARF ROAD, CLONTARF, DUBLIN 3   PH: 01 2447538   EMAIL: info@davey-smith.com   WEB: www.davey-smith.com</small>		