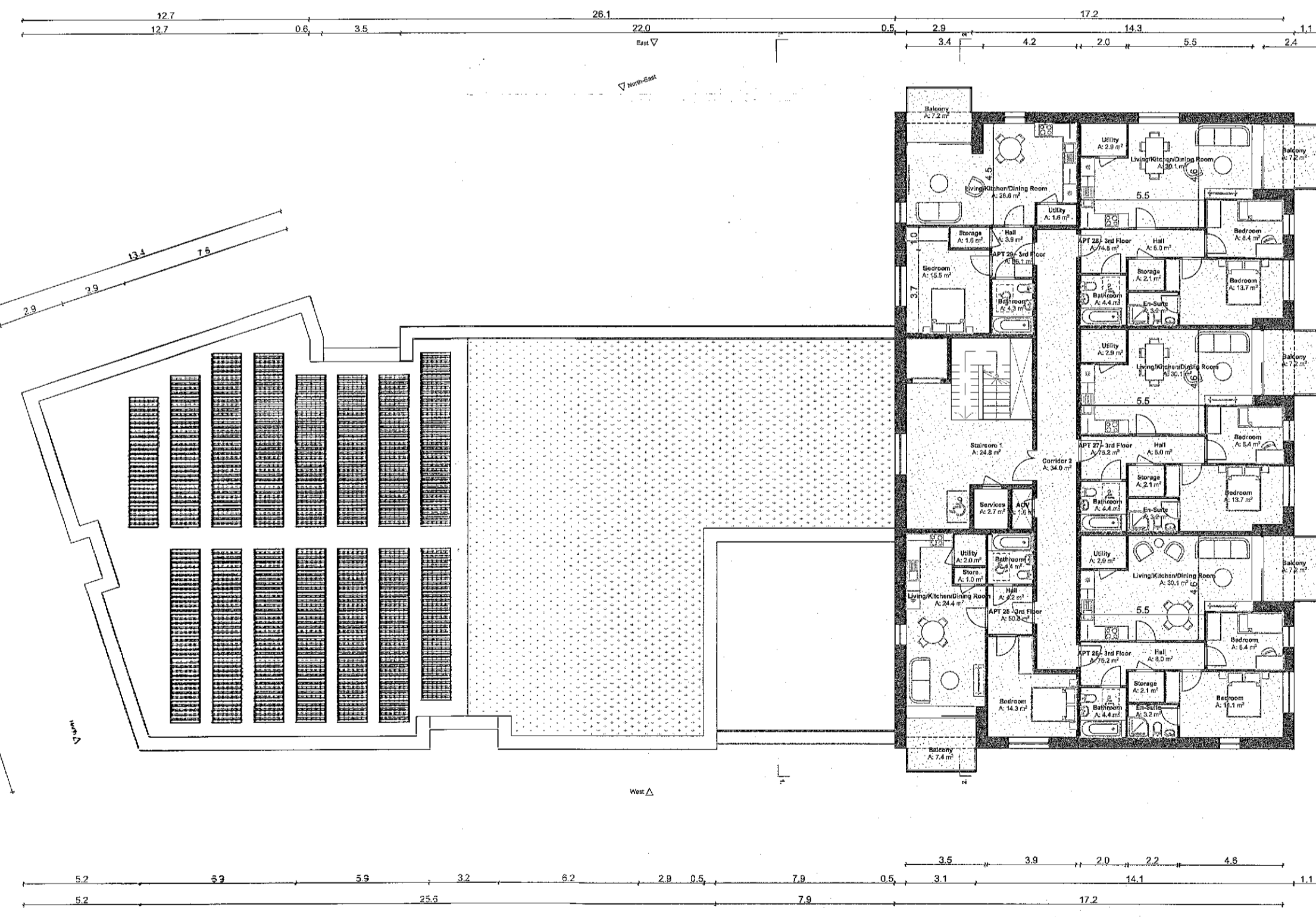


Second Floor



Third Floor

Apartment 28		
Gross Internal Area		
Area Type	Proposed Area	DoHPCLG Area Min.
2 Bed Unit / 3 Person	74.8 m <sup>2</sup>	63.0 m <sup>2</sup>
Space Provision & Room Sizes		
Area Type	Proposed Area	DoHPCLG Area Min.
Aggregate Bedroom Area	22.1 m <sup>2</sup>	20.1 m <sup>2</sup>
Aggregate Living Area	30.1 m <sup>2</sup>	28.0 m <sup>2</sup>
Storage Provision		
Area Type	Proposed Area	DoHPCLG Area Min.
Storage	5.0 m <sup>2</sup>	5.0 m <sup>2</sup>

Apartment 29		
Gross Internal Area		
Area Type	Proposed Area	DoHPCLG Area Min.
1 Bed Unit / 2 Person	56.1 m <sup>2</sup>	45.0 m <sup>2</sup>
Space Provision & Room Sizes		
Area Type	Proposed Area	DoHPCLG Area Min.
Aggregate Bedroom Area	13.8 m <sup>2</sup>	11.4 m <sup>2</sup>
Aggregate Living Area	28.6 m <sup>2</sup>	23.0 m <sup>2</sup>
Storage Provision		
Area Type	Proposed Area	DoHPCLG Area Min.
Storage	3.3 m <sup>2</sup>	3.0 m <sup>2</sup>

Apartment 24		
Gross Internal Area		
Area Type	Proposed Area	DoHPCLG Area Min.
1 Bed Unit / 2 Person	55.8 m <sup>2</sup>	45.0 m <sup>2</sup>
Space Provision & Room Sizes		
Area Type	Proposed Area	DoHPCLG Area Min.
Aggregate Bedroom Area	13.6 m <sup>2</sup>	11.4 m <sup>2</sup>
Aggregate Living Area	29.0 m <sup>2</sup>	23.0 m <sup>2</sup>
Storage Provision		
Area Type	Proposed Area	DoHPCLG Area Min.
Storage	3.3 m <sup>2</sup>	3.0 m <sup>2</sup>

Apartment 13, 14 & 15		
Gross Internal Area		
Area Type	Proposed Area	DoHPCLG Area Min.
1 Bed Unit / 2 Person	49.4 m <sup>2</sup>	45.0 m <sup>2</sup>
Space Provision & Room Sizes		
Area Type	Proposed Area	DoHPCLG Area Min.
Aggregate Bedroom Area	13.3 m <sup>2</sup>	11.4 m <sup>2</sup>
Aggregate Living Area	23.6 m <sup>2</sup>	23.0 m <sup>2</sup>
Storage Provision		
Area Type	Proposed Area	DoHPCLG Area Min.
Storage	3.0 m <sup>2</sup>	3.0 m <sup>2</sup>

Apartment 16		
Gross Internal Area		
Area Type	Proposed Area	DoHPCLG Area Min.
2 Bed Unit / 3 Person	67.1 m <sup>2</sup>	63.0 m <sup>2</sup>
Space Provision & Room Sizes		
Area Type	Proposed Area	DoHPCLG Area Min.
Aggregate Bedroom Area	20.5 m <sup>2</sup>	20.1 m <sup>2</sup>
Aggregate Living Area	28.0 m <sup>2</sup>	28.0 m <sup>2</sup>
Storage Provision		
Area Type	Proposed Area	DoHPCLG Area Min.
Storage	5.0 m <sup>2</sup>	5.0 m <sup>2</sup>

Apartment 17		
Gross Internal Area		
Area Type	Proposed Area	DoHPCLG Area Min.
1 Bed Unit / 2 Person	57.4 m <sup>2</sup>	45.0 m <sup>2</sup>
Space Provision & Room Sizes		
Area Type	Proposed Area	DoHPCLG Area Min.
Aggregate Bedroom Area	13.5 m <sup>2</sup>	11.4 m <sup>2</sup>
Aggregate Living Area	26.4 m <sup>2</sup>	23.0 m <sup>2</sup>
Storage Provision		
Area Type	Proposed Area	DoHPCLG Area Min.
Storage	3.4 m <sup>2</sup>	3.0 m <sup>2</sup>

Apartment 18		
Gross Internal Area		
Area Type	Proposed Area	DoHPCLG Area Min.
2 Bed Unit / 3 Person	76.2 m <sup>2</sup>	63.0 m <sup>2</sup>
Space Provision & Room Sizes		
Area Type	Proposed Area	DoHPCLG Area Min.
Aggregate Bedroom Area	22.3 m <sup>2</sup>	20.1 m <sup>2</sup>
Aggregate Living Area	29.1 m <sup>2</sup>	28.0 m <sup>2</sup>
Storage Provision		
Area Type	Proposed Area	DoHPCLG Area Min.
Storage	5.2 m <sup>2</sup>	5.0 m <sup>2</sup>

Apartment 19		
Gross Internal Area		
Area Type	Proposed Area	DoHPCLG Area Min.
2 Bed Unit / 3 Person	74.9 m <sup>2</sup>	63.0 m <sup>2</sup>
Space Provision & Room Sizes		
Area Type	Proposed Area	DoHPCLG Area Min.
Aggregate Bedroom Area	22.1 m <sup>2</sup>	20.1 m <sup>2</sup>
Aggregate Living Area	30.1 m <sup>2</sup>	28.0 m <sup>2</sup>
Storage Provision		
Area Type	Proposed Area	DoHPCLG Area Min.
Storage	5.0 m <sup>2</sup>	5.0 m <sup>2</sup>

Apartment 20, 25		
Gross Internal Area		
Area Type	Proposed Area	DoHPCLG Area Min.
1 Bed Unit / 2 Person	50.8 m <sup>2</sup>	45.0 m <sup>2</sup>
Space Provision & Room Sizes		
Area Type	Proposed Area	DoHPCLG Area Min.
Aggregate Bedroom Area	14.3 m <sup>2</sup>	11.4 m <sup>2</sup>
Aggregate Living Area	24.4 m <sup>2</sup>	23.0 m <sup>2</sup>
Storage Provision		
Area Type	Proposed Area	DoHPCLG Area Min.
Storage	3.0 m <sup>2</sup>	3.0 m <sup>2</sup>

Apartment 21, 22, 26 & 27		
Gross Internal Area		
Area Type	Proposed Area	DoHPCLG Area Min.
2 Bed Unit / 3 Person	75.9 m <sup>2</sup>	63.0 m <sup>2</sup>
Space Provision & Room Sizes		
Area Type	Proposed Area	DoHPCLG Area Min.
Aggregate Bedroom Area	22.1 m <sup>2</sup>	20.1 m <sup>2</sup>
Aggregate Living Area	30.1 m <sup>2</sup>	28.0 m <sup>2</sup>
Storage Provision		
Area Type	Proposed Area	DoHPCLG Area Min.
Storage	5.0 m <sup>2</sup>	5.0 m <sup>2</sup>

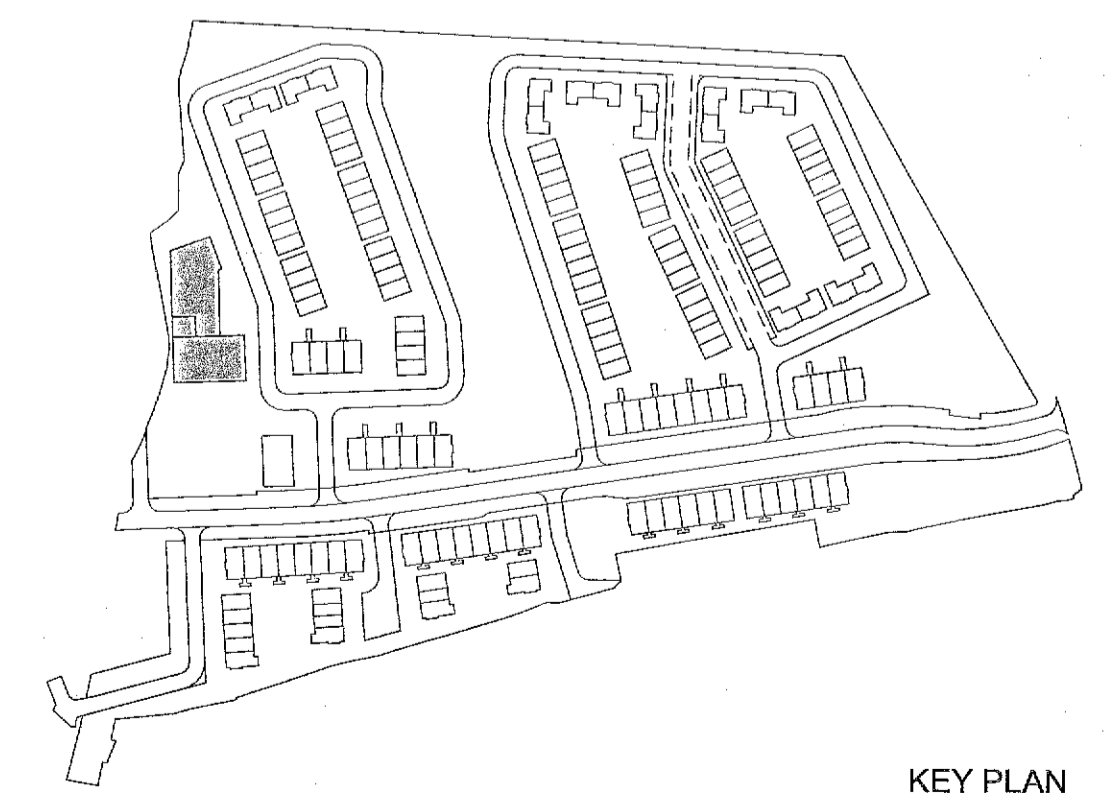
Apartment 23		
Gross Internal Area		
Area Type	Proposed Area	DoHPCLG Area Min.
2 Bed Unit / 3 Person	75.2 m <sup>2</sup>	63.0 m <sup>2</sup>
Space Provision & Room Sizes		
Area Type	Proposed Area	DoHPCLG Area Min.
Aggregate Bedroom Area	22.5 m <sup>2</sup>	20.1 m <sup>2</sup>
Aggregate Living Area	30.1 m <sup>2</sup>	28.0 m <sup>2</sup>
Storage Provision		
Area Type	Proposed Area	DoHPCLG Area Min.
Storage	5.0 m <sup>2</sup>	5.0 m <sup>2</sup>

Notes

Do not scale from this drawing.  
Use figured dimensions only.  
All errors and omissions to be reported to the Architect.  
This drawing is to be read in conjunction with relevant consultant's drawings.  
All dimensions are in millimetres and all levels are in meters to match Datums unless otherwise noted.

This drawing is for planning purposes only and not for construction.  
This drawing or design may not be reproduced without permission.

NOTES ON FINISHES:	
ROOF:	CAPPING TO BE ALUMINIUM POWDER COATED TO SELECTED COLOUR.
WALLS:	SELECTED CLAY BRICKWORK WHERE INDICATED OTHERWISE SELECTED SELF-COLOURED RENDER
JOINERY:	ALL WINDOWS AND DOORS, FRAMES AND LEAFS TO BE ALUMINIUM POWDER COATED TO APPROVED COLOUR OR UPVC OR PAINTED TIMBER TO APPROVED COLOUR. OBSCURE GLAZING WHERE INDICATED TO SENSITIVE WINDOWS.
RAINWATER GOODS:	GUTTERS, DOWNPIPES AND FIXINGS TO BE uPVC OR ALUMINIUM POWDER COATED TO SELECTED COLOUR TO MATCH ROOF CAPPING.
SOLAR PANELS:	INDICATIVE SOLAR PANEL POSITION, FINAL SOLAR PANEL POSITION DEPENDS ON HOUSE ORIENTATION. THE SOLAR PANELS INDICATED ARE A PROVISIONAL OPTION TO SATISFY RENEWABLE ENERGY REQUIREMENTS OF BUILDING REGULATIONS PART L. SOLAR PANELS MAY BE OMITTED IN FAVOUR OF ALTERNATIVE RENEWABLE ENERGY OPTIONS.



KEY PLAN

**Planning Application**  
- Clarification of Additional Information

**DAVEY & SMITH**  
ARCHITECTS

DAVEY & SMITH ARCHITECTS | 13 SEAPORT BUILDING, 44/45 CLONTARF ROAD, CLONTARF, DUBLIN 3 | PH: 01 247328 | EMAIL: info@davey-smith.com | WEB: www.davey-smith.com

Layout ID: <b>PH 005- Apartment Block A-</b>	Scale: 1:200
Project: <b>Clonburris, K1</b>	Job No: 2804
Drawing Name: <b>Second &amp; Third Floor Plan</b>	Series: <b>PLANNING</b>
	Date: 28/03/2023
	Status: Clarification of Additional Information

THIS DRAWING TO BE READ IN CONJUNCTION WITH RELEVANT CONSULTANT DRAWINGS. NOTIFY ARCHITECT OF ANY DISCREPANCIES. CHECK DIMENSIONS ON SITE. USE RELEVANT DIMENSIONS ONLY. COPYRIGHT RESERVED FOR DAVEY & SMITH ARCHITECTS.