

1 PROPOSED REAR ELEVATION

The proposed external works comprise:

- Replacement of the existing shop front at ground floor level incorporating the removal of the existing single glazed timber and PVC windows and doors
- Removal of the existing delaminating timber fascia
- Removal of the wall mounted planter at high level centred over the fascia and the installation of new double/triple glazed timber/aluminium windows and doors
- New painted shopfront and signage
- Resurfacing of the access terrace providing level entry to both units

ENTRANCE DOORS AND WINDOWS:

Carlson Alu-Clad Doors and Windows - External Finish RAL 7035 Light Grey

EXTERNAL PAVING:

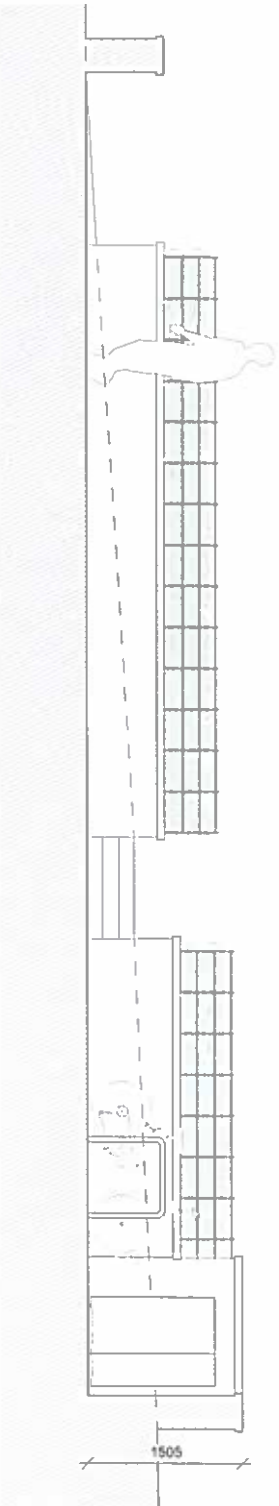
Permeable Concrete Paving and to falls for improved level access routes to entrances
Light Grey Finish

EXTERNAL PLANTER:

Concrete Block Wall Construction with Render Finish
E05/01 Insitu Concrete Capping with Drip Edge
Q40/05 Galvanised Steel Railing, baseplate fixed under concrete capping -
External Finish RAL 7035 Light Grey

SHOPFRONT:

Pre-primed treated Timber Fascia, Steel bracket and Soffit Bearer and Lining
External Finish RAL 7035 Light Grey



2 PROPOSED PLANTER ELEVATION

1:100 (1:100)