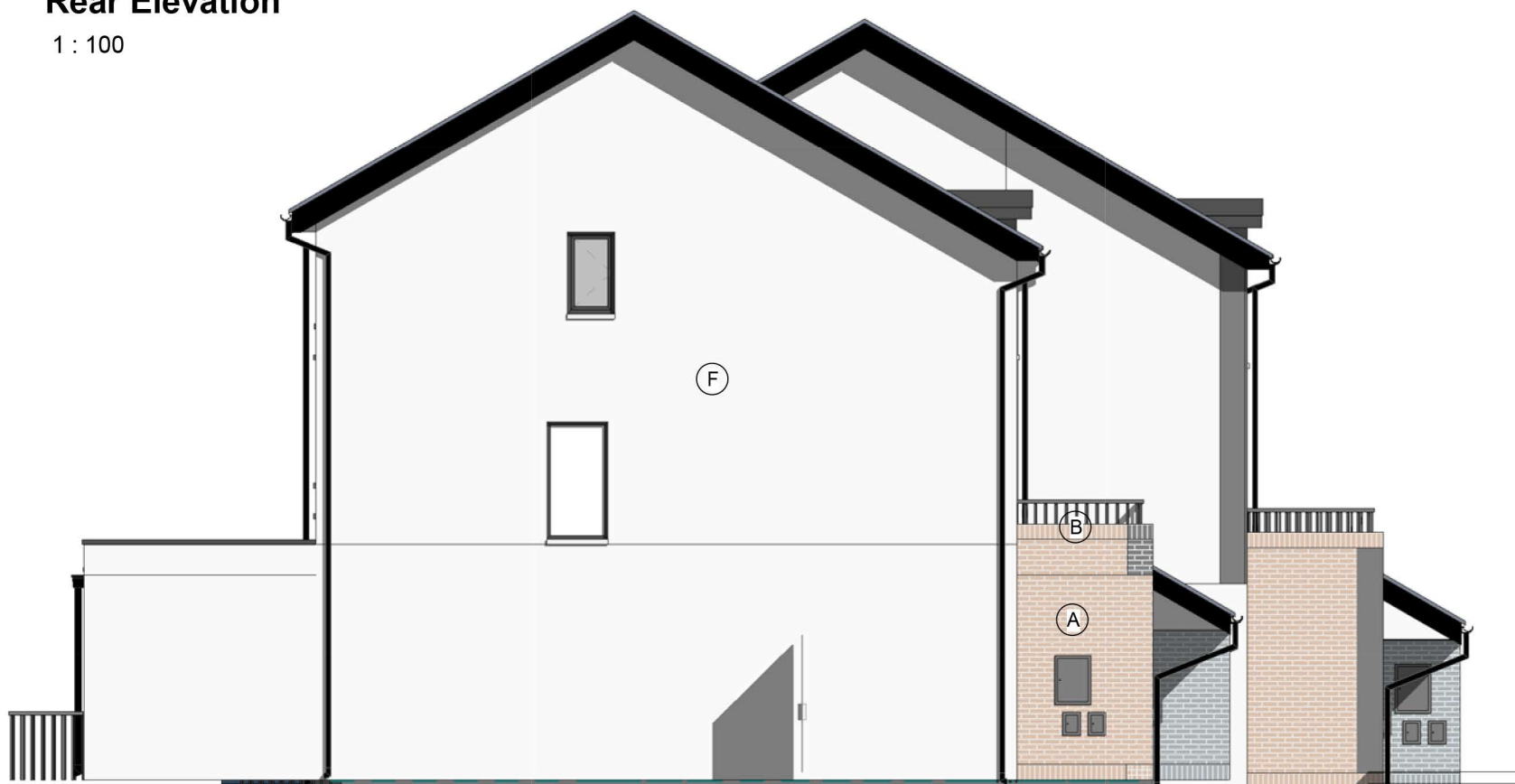




Rear Elevation

1 : 100



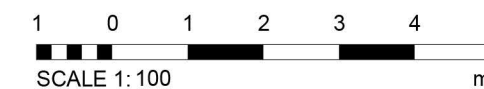
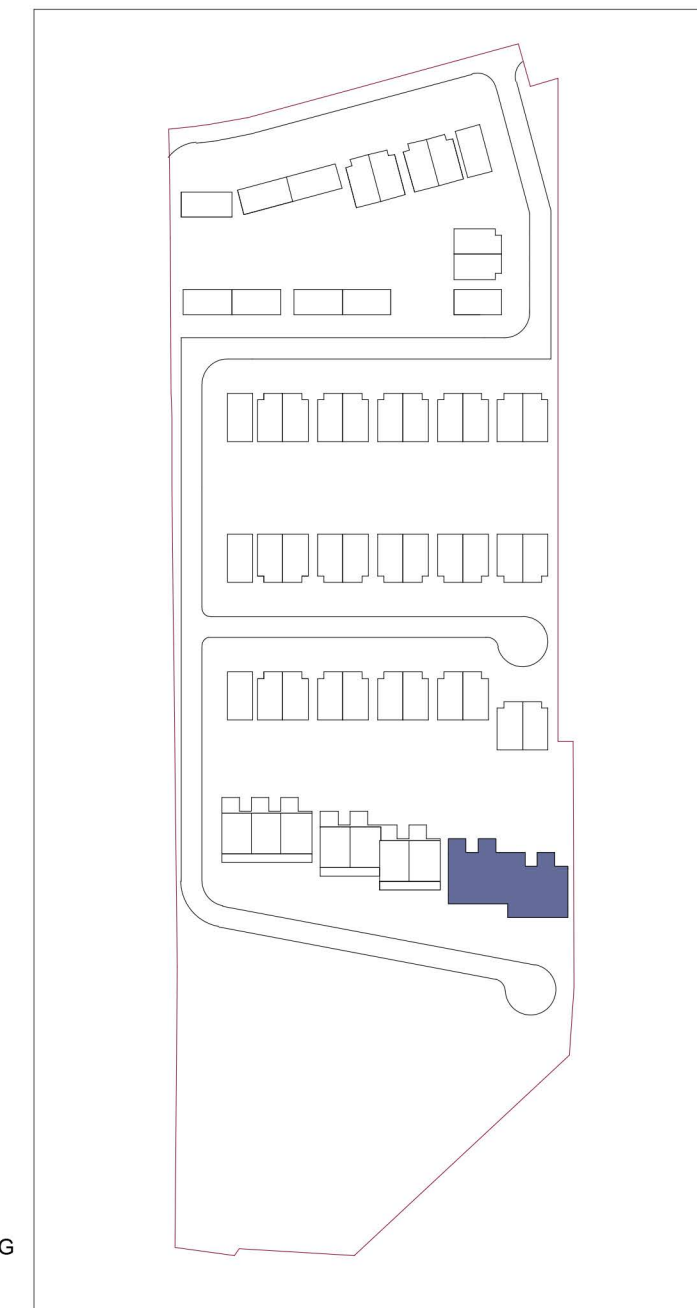
MATERIALITY

- (A) OLD ENGLISH BUFF BRICK STRETCHER BOND
- (B) OLD ENGLISH BUFF BRICK SOLDIER COURSE
- (C) OLD ENGLISH RED BRICK STRETCHER BOND
- (D) OLD ENGLISH RED BRICK SOLDIER COURSE
- (E) GREY GLAZED BRICK STRETCHER BOND
- (F) PIGMENTED WHITE RENDER
- (G) COATED ALUMINIUM CLADDING WITH STANDING SEAMS RAL 7015
- (H) BLUE-GREY SMOOTH FIBRE CEMENT TILE
- (I) TURF BROWN SMOOTH FIBRE CEMENT TILE
- (J) GREY GLAZED BRICK SOLDIER COURSE
- (K) OLD ENGLISH BUFF BRICK RELIEF PANEL
- (L) OLD ENGLISH RED BRICK RELIEF PANEL
- (M) IKO ARMOURPLAN PVC ROOFING MEMBRANE
- (N) ALUMINIUM COPING

Gable Elevation

1 : 100

KEY PLAN



Copyright reserved

All dimensions to be checked on site before work commences. Figured dimensions to be taken in preference to scaled dimensions. If in doubt please ask.

Revision	Description	Date
P1	Revised for Planning Issue	03/02/23

STATUS Planning
PROJECT Kiltipper Road
DRAWING Unit Type Dx4 GA Elevations 2-2

DRAWN BY DSR	CHECKED BY DSR	DATE Feb 23
SCALE (@ A3) 1 : 100	PROJECT NUMBER 19003	
DRAWING NUMBER KIL - DAR - - - DR - A -0144_2	REV P1	
<small>Project Identifier</small>	<small>Originator</small>	<small>Zone</small>
<small>Level</small>	<small>Type</small>	<small>Discipline</small>
<small>Number</small>	<small>Revision</small>	



Delta Architects
1 Batemans Row
London
EC2A 3HH
T 020 7613 5702