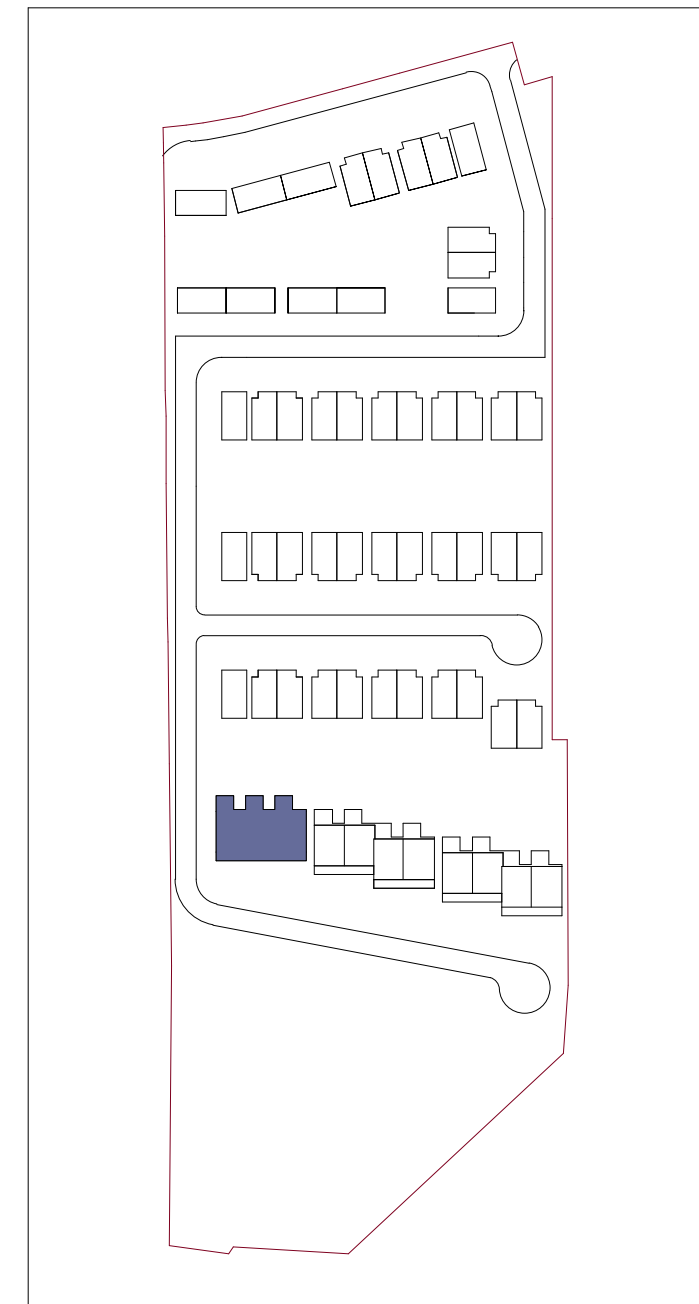
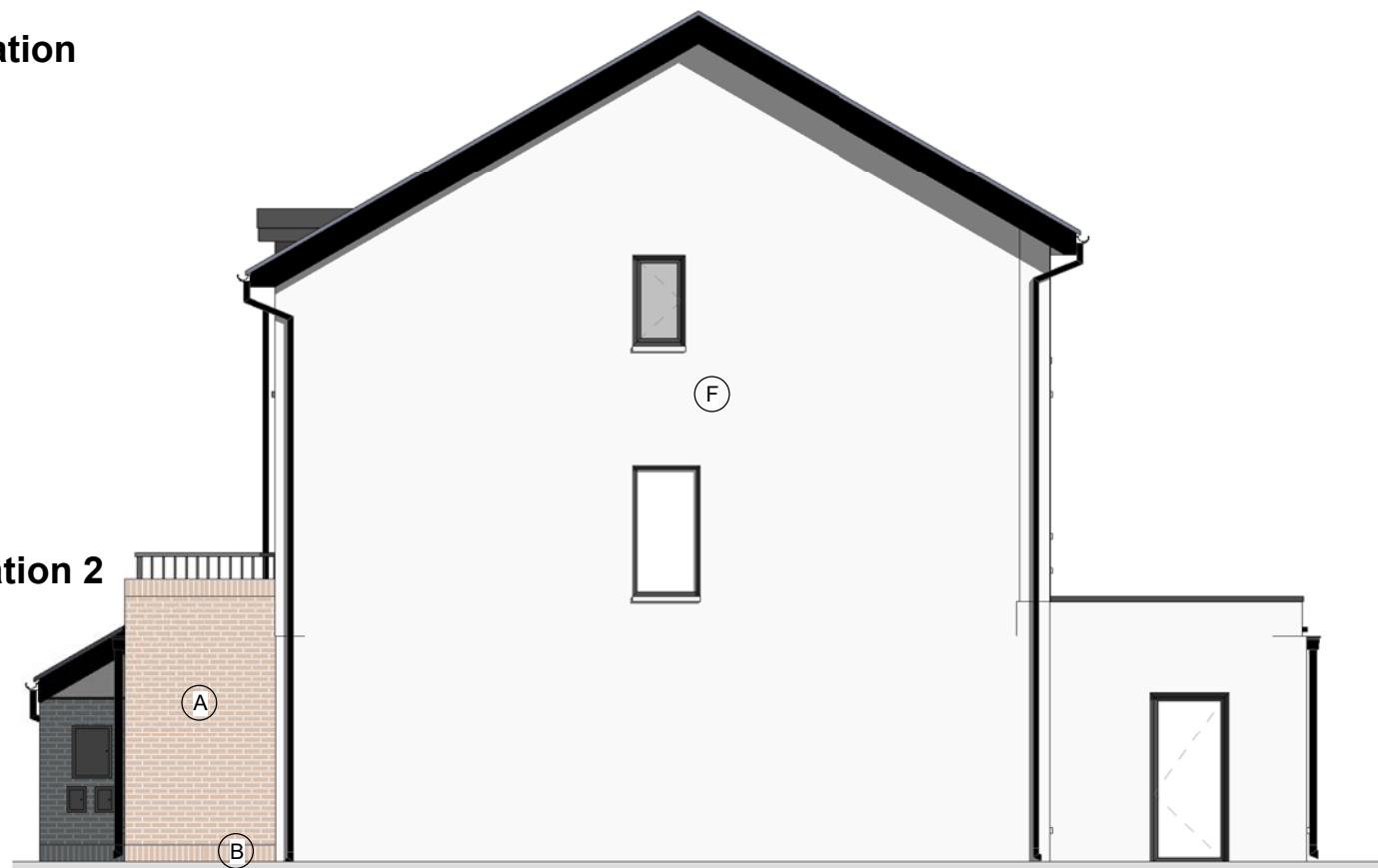


KEY PLAN



Existing Rear Elevation

1 : 100

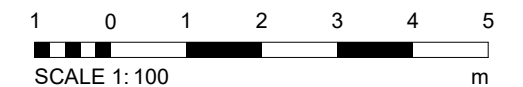


Existing Side Elevation 2

1 : 100

MATERIALITY

- (A) OLD ENGLISH BUFF BRICK STRETCHER BOND
- (B) OLD ENGLISH BUFF BRICK SOLDIER COURSE
- (C) OLD ENGLISH RED BRICK STRETCHER BOND
- (D) OLD ENGLISH RED BRICK SOLDIER COURSE
- (E) GREY GLAZED BRICK STRETCHER BOND
- (F) PIGMENTED WHITE RENDER
- (G) COATED ALUMINIUM CLADDING WITH STANDING SEAMS RAL 7015
- (H) BLUE-GREY SMOOTH FIBRE CEMENT TILE
- (I) TURF BROWN SMOOTH FIBRE CEMENT TILE
- (J) GREY GLAZED BRICK SOLDIER COURSE
- (K) OLD ENGLISH BUFF BRICK RELIEF PANEL
- (L) OLD ENGLISH RED BRICK RELIEF PANEL
- (M) IKO ARMOURPLAN PVC ROOFING MEMBRANE
- (N) ALUMINIUM COPING



Copyright reserved

PROPOSED

All dimensions to be checked on site before work commences. Figured dimensions to be taken in preference to scaled dimensions. If in doubt please ask.

Revision	Description	Date
P1	For Review	11/08/22
P2	Revised for Planning Issue	03/02/23

STATUS Planning
PROJECT Kiltipper Road
DRAWING Unit Type Dx3 GA Elevations_2-2

DRAWN BY DSR	CHECKED BY DSR	DATE Feb '23
SCALE (@ A3) 1 : 100	PROJECT NUMBER 19003	
DRAWING NUMBER KIL - DAR - UD - XX - DR - A -0142_2	REV P2	
<small>Project Identifier</small>	<small>Originator</small>	<small>Zone</small>
<small>Level</small>	<small>Type</small>	<small>Discipline</small>
<small>Number</small>	<small>Revision</small>	

Delta Architects
1 Batemans Row
London
EC2A 3HH
T 020 7613 5702