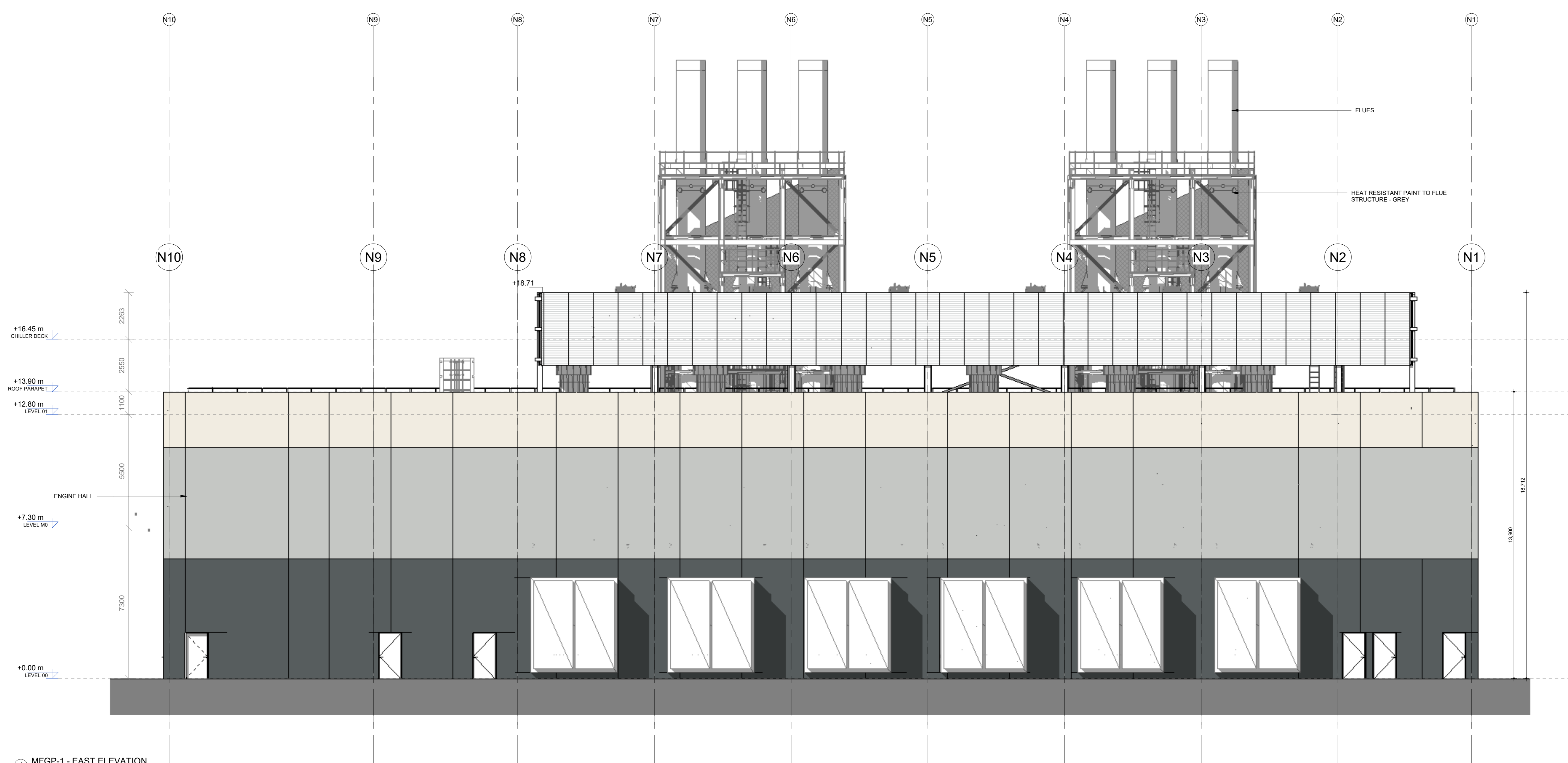


② MFGP-1 - WEST ELEVATION
1:100



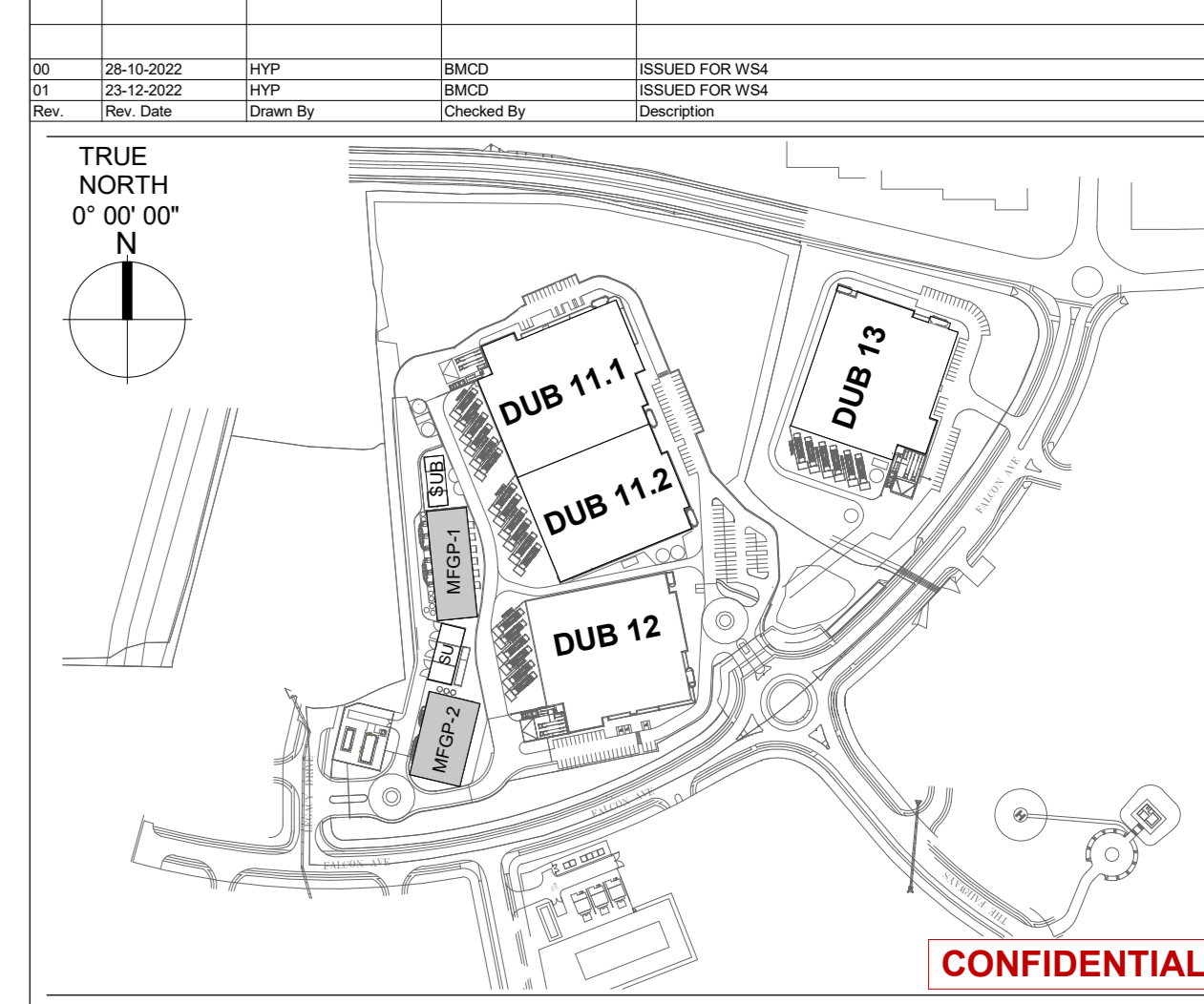
① MFGP-1 - EAST ELEVATION
1:100

SHE BOX

GENERAL NOTES

- LEGEND**
- Clear glass
 - Mesh metal grating
Powder coated,
Colour: Light Grey (RAL 7035)
 - Sandwich Panel,
Colourcoat Prisma Natural hot-dip aluminum zinc coating,
Colour: Pure White (RAL 9010)
 - Sandwich Panel,
Colourcoat Prisma Natural hot-dip aluminum zinc coating,
Colour: Light Grey (RAL 7035)
 - Sandwich Panel,
Colourcoat Prisma Natural hot-dip aluminum zinc coating,
Colour: Grey Blue (RAL 5008)
 - Flues
Powder coated,
Colour: Light Grey (RAL 7035)

Scale for Micrometring
Millimetres
Inches



Client VANTAGE DATA CENTRES	Architect Hyphen HYPHEN ARCH (IRELAND) LTD Unit 2, Laneside Park, North Road, Mullingar, CO. RT. ANTOINE Republic of Ireland		
Structural Engineer BURNS MEDONNELL 10 Bishops Square, London E1 1AD United Kingdom	Structural Civils Engineer PINNACLE CONSULTING ENGINEERS Pinnacle Consulting Engineers Atkins, Riverside Plc, Waterside Garden City, AL7 1HE United Kingdom		
BM coordinator: Darragh Beggan	Approved by: MM	Checked by: DB	Drawn by: DB
Project address: Profile Park, Dublin 22, Ireland, 53°19'1.40"N, 6°26'40.80"W			
Drawing title MFGP-1 - EAST AND WEST ELEVATIONS			Sheet number A201
Formal / Issue A0 / 01	Scale 1:100	Status ISSUED	Date / File Code 21/12/2022 / DUB1-MFGP-1-DR-ZZ-A201-V0-WS4-HYP