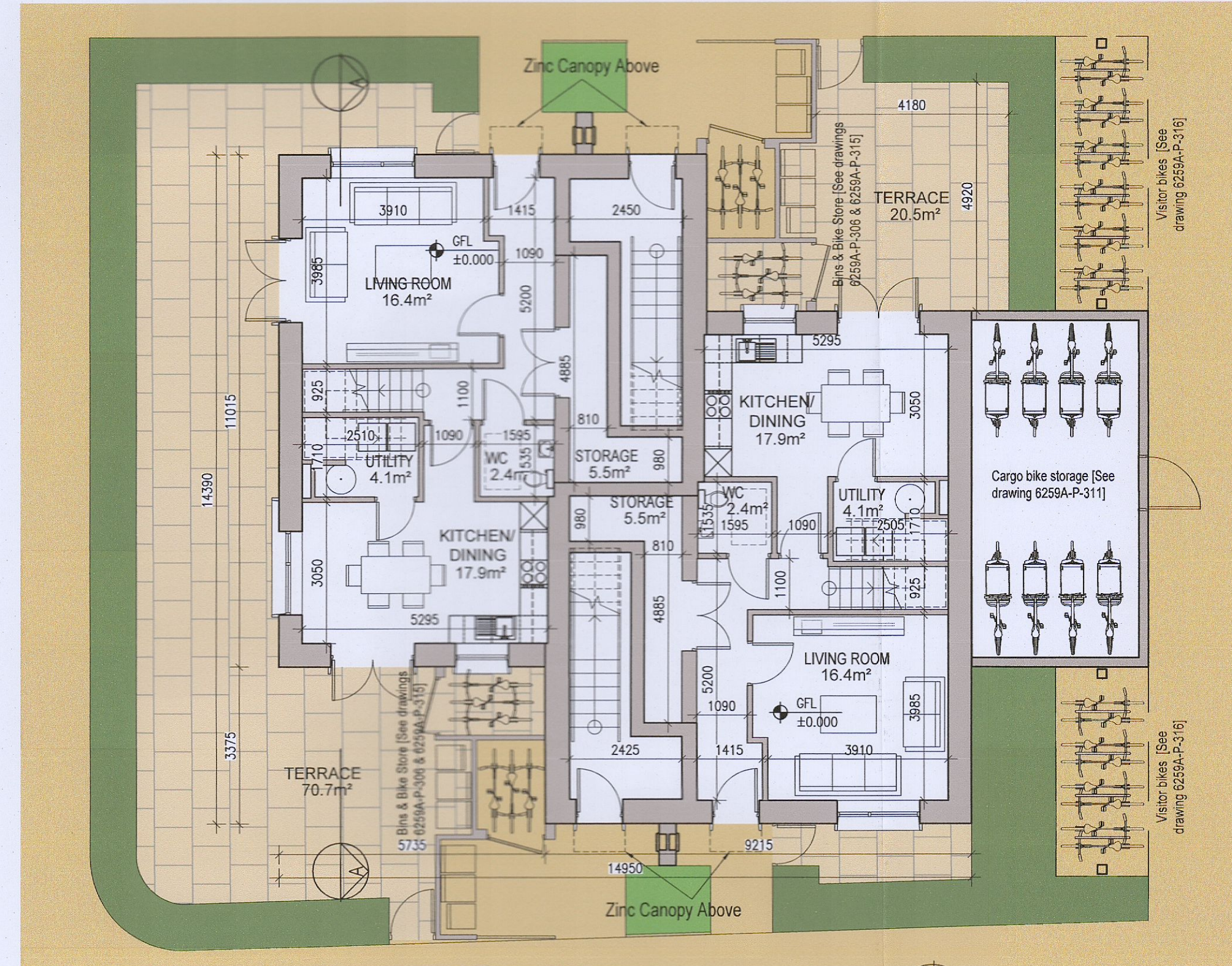
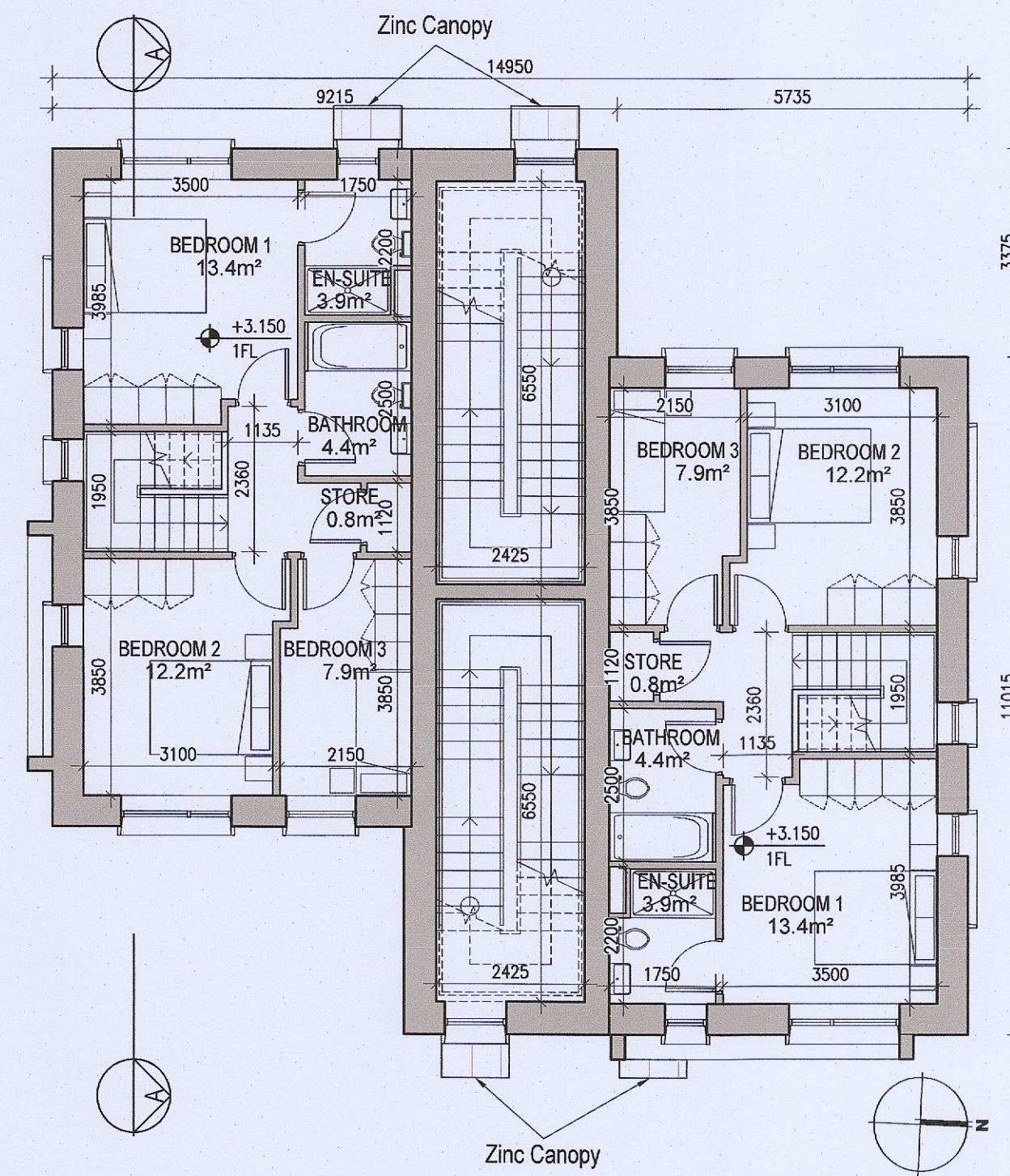


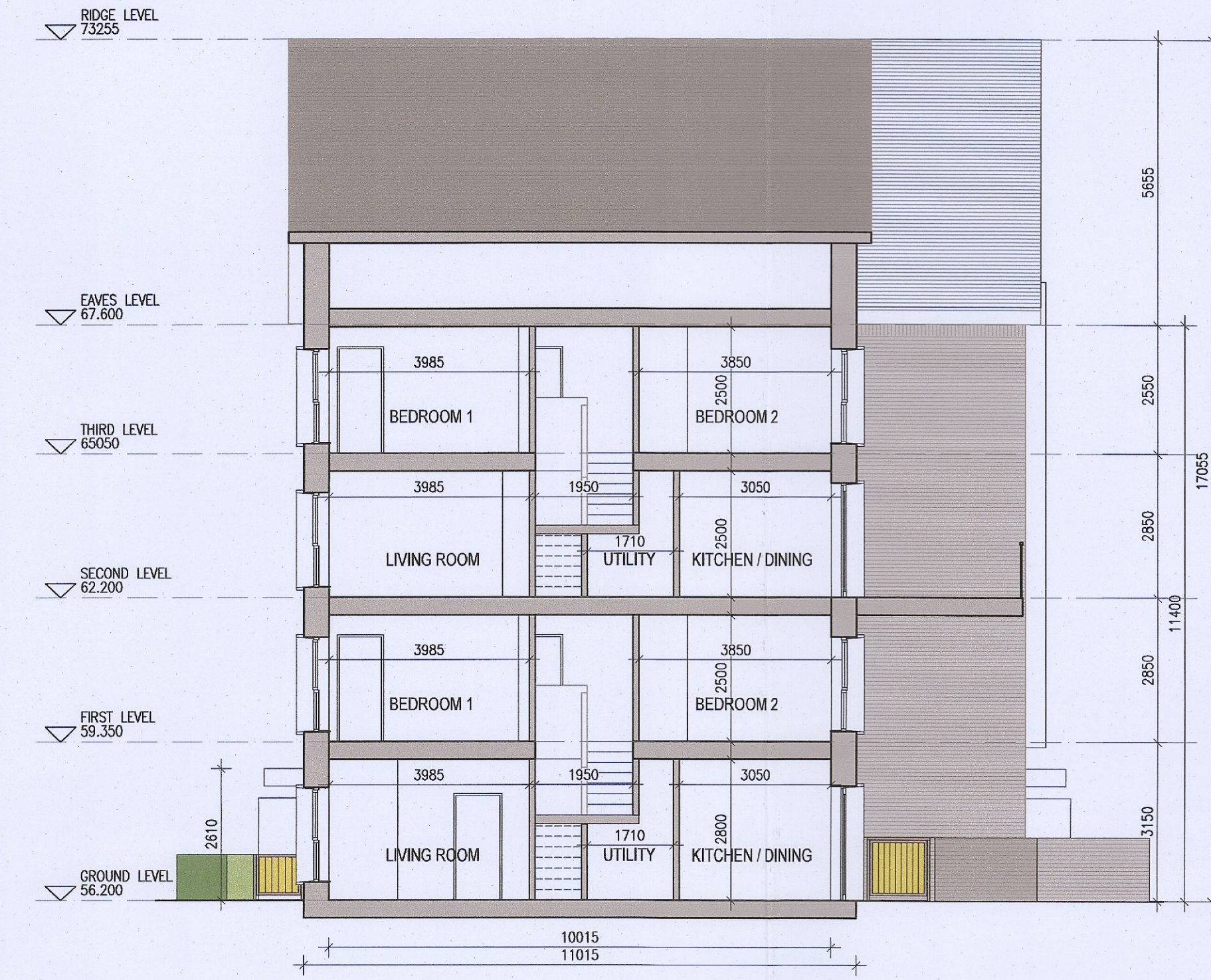
DUPLEX TYPE H1/H2



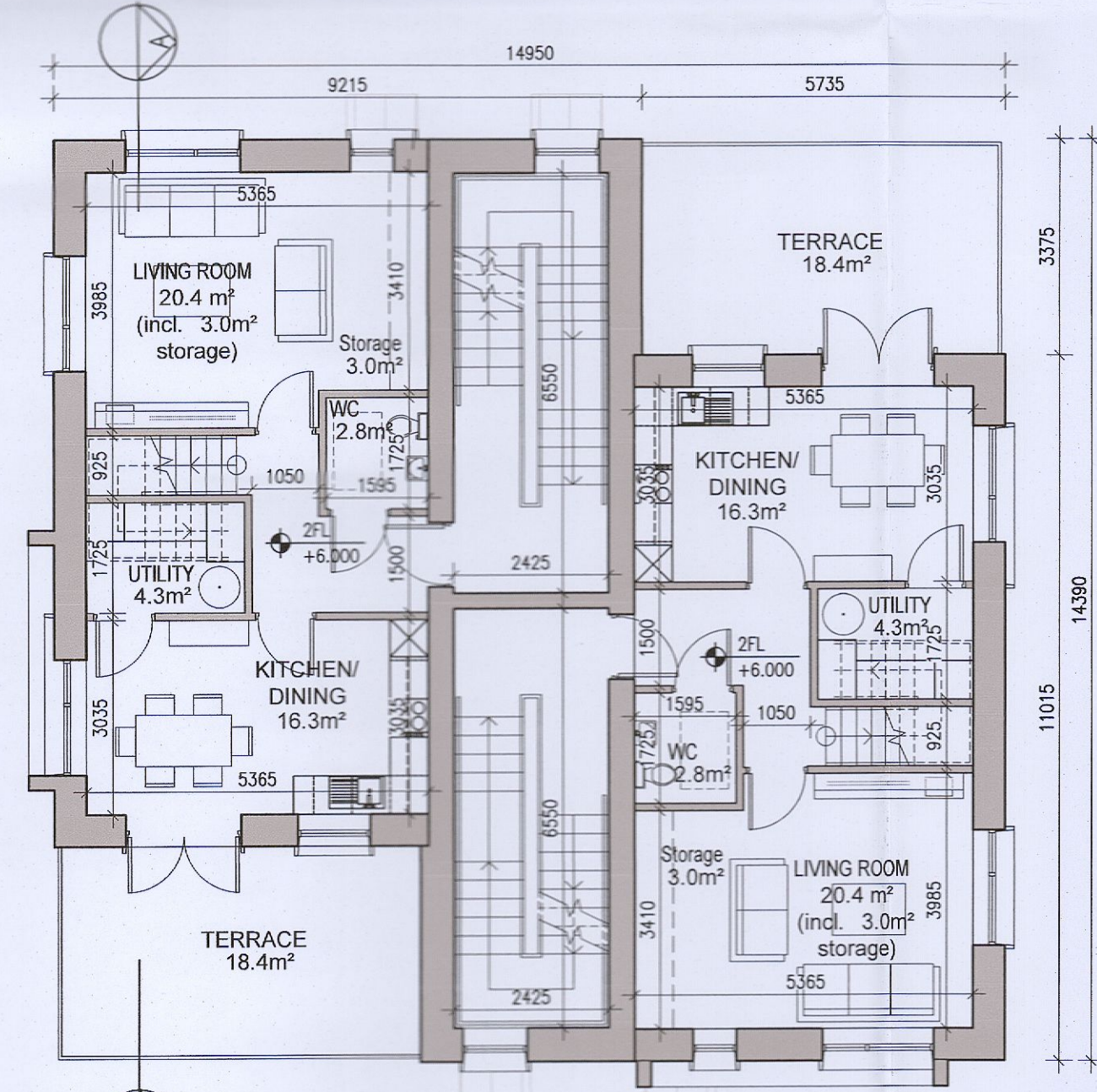
01 Ground Floor Plan [H1]
1:100@A1



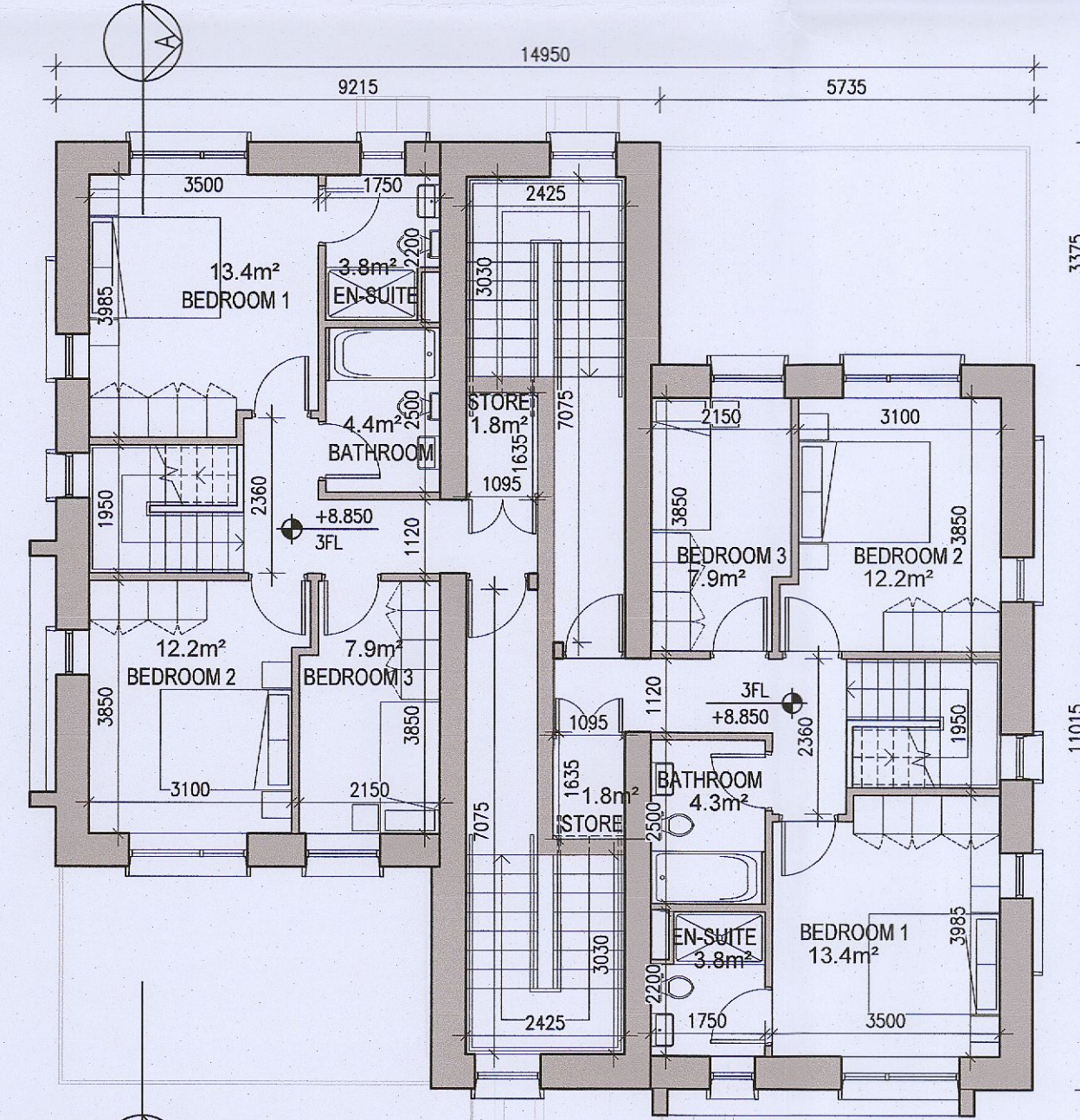
02 First Floor Plan [H1]
1:100@A1



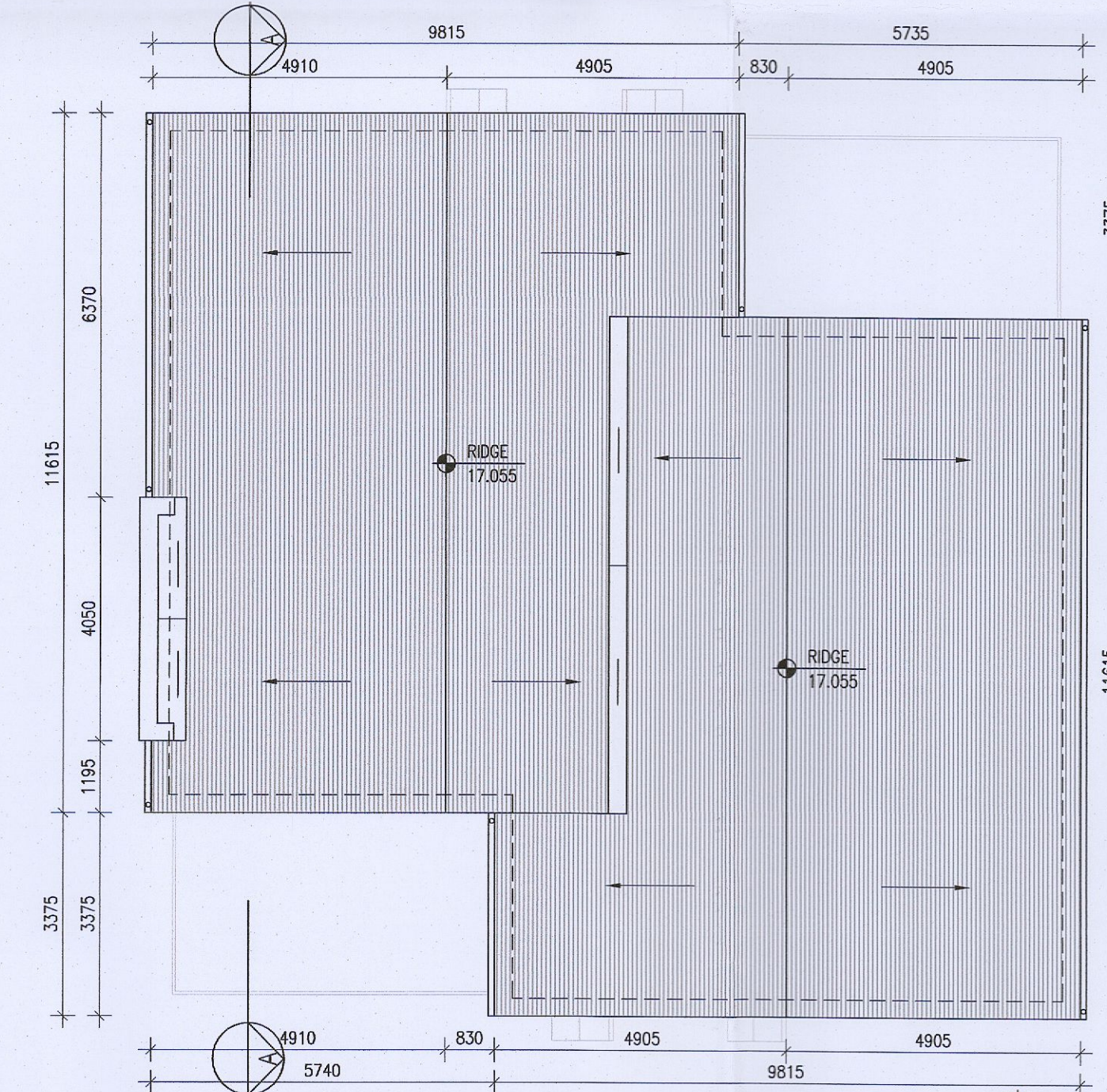
06 Typical Section [A-A]
1:100@A1



03 Second Floor Plan [H2]
1:100@A1



04 Third Floor Plan [H2]
1:100@A1



05 Roof Plan
1:100@A1



Indicates unit locations
KEY PLAN [NTS]

HOUSE TYPES	No. OF UNITS
Type A1/A2	- 3 bed 15
Type B1/B2	- 3 bed 28
Type C1/C2/C3/C4	- 3 bed 16
Type D	- 4 bed 3
Type E1/E2	- 4 bed 7
Type K1/K2/K3	- 4 bed 6
	75

DUPLEX	No. OF UNITS
Type F1	- 2 bed 3
Type F2	- 3 bed 3
Type F3	- 2 bed 1
Type F4	- 3 bed 1
Type F5	- 2 bed 6
Type F6	- 3 bed 6
Type G1	- 2 bed 33
Type G2	- 3 bed 33
Type G3	- 2 bed 2
Type G4	- 3 bed 2
Type H1/H2	- 2 bed 7
Type H3	- 3 bed 2
Type J1	- 2 bed 9
Type J2	- 3 bed 9
Type J3	- 2 bed 3
Type J4	- 3 bed 3
	132

TOTAL NO. OF UNITS **207**

- EXTERNAL FINISHES**
- WALLS:** PAINTED SAND / CEMENT RENDER OR PROPRIETARY PRECOLOURED RENDER FINISH SELECTED BRICKWORK WHERE INDICATED ON DRAWINGS
 - WINDOWS:** SELECTED PROPRIETARY DOUBLE / TRIPLE GLAZED WINDOW SYSTEM WITH FRAMES TO APPROVED COLOUR OBTAINED GLAZING TO BATHROOMS AND EN-SUITES.
 - DOORS:** SELECTED PROPRIETARY DOORS AND GLAZED SIDE SCREENS TO APPROVED COLOUR.
 - RAINWATER GOODS:** uPVC OR POWDER COATED METAL GUTTERS AND RAINWATER PIPES TO SELECTED COLOUR.
 - MAIN ROOF:** CONCRETE ROOF TILES IN SELECTED COLOUR.
 - LOW LEVEL PROJECTION:** ZINC CANOPY TO ENTRANCE OF UNITS
 - OTHER ITEMS:** uPVC OR POWDER COATED METAL FASCIAS, SOFFITS AND BARGE BOARDS PAINTED MILDSTEEL RAILINGS AND BALUSTRADES

H1 [3 Bed] - Ground floor area	60.9 m ²
First floor area	53.7 m ²
Total Floor Area (H1):	114.7 m²
H2 [3 Bed] - Second floor area	53.7 m ²
Third floor area	57.6 m ²
Total Floor Area (H2):	111.3 m²

REFER TO LANDSCAPE ARCHITECT'S DRAWINGS FOR ALL LANDSCAPING DETAILS INCLUDING BOUNDARY TREATMENTS

DUPLEX TYPE H1/H2

- Notes:**
- Copyright Reserved
 - Work to figured dimensions only. Do not scale drawing
 - The contractor is responsible for checking all levels and dimensions on site and shall refer all discrepancies to the Architect
 - Where appropriate, for details of r.c. structure, or mechanical and electrical details, see Engineers drawings
 - Proprietary items shall be fixed in strict accordance with manufacturers instructions.
 - Sizes of proprietary items shall be checked with manufacturer.
 - The contractor shall be responsible for the coordination of structure, finishes and services.

Issue	Status
Progress	
Planning Application	
Fire Cert	
Disability Cert	
Tender	
Construction	
As Built	
Information Only	

No.	Date	Revision	Initials
01	14.10.2022	ISSUED FOR PLANNING	ED
02	16.03.2023	ISSUED FOR PLANNING RFI	ED

Project	Aderrig Phase 3, Adamstown SDZ Residential Development		
Drawing Title	Duplex Type H1/H2 (Landmark Building) - Plans, Section		
Drawing No.	6259A-P-213		
Scale	1:100@A1	Rev	02
Drawn	IFJ, ED	Date	MAR 2023

Project	Aderrig Phase 3, Adamstown SDZ Residential Development		
Drawing Title	Duplex Type H1/H2 (Landmark Building) - Plans, Section		
Drawing No.	6259A-P-213		
Scale	1:100@A1	Rev	02
Drawn	IFJ, ED	Date	MAR 2023

6-7 HANCOCK TERRACE, COLLINS ST, MELB AND
1 + 353-1-616 2400 | 1 + 353-1-676 7386
www.bkd.ie
bkd architects
BURKE-KENNEDY DOYLE