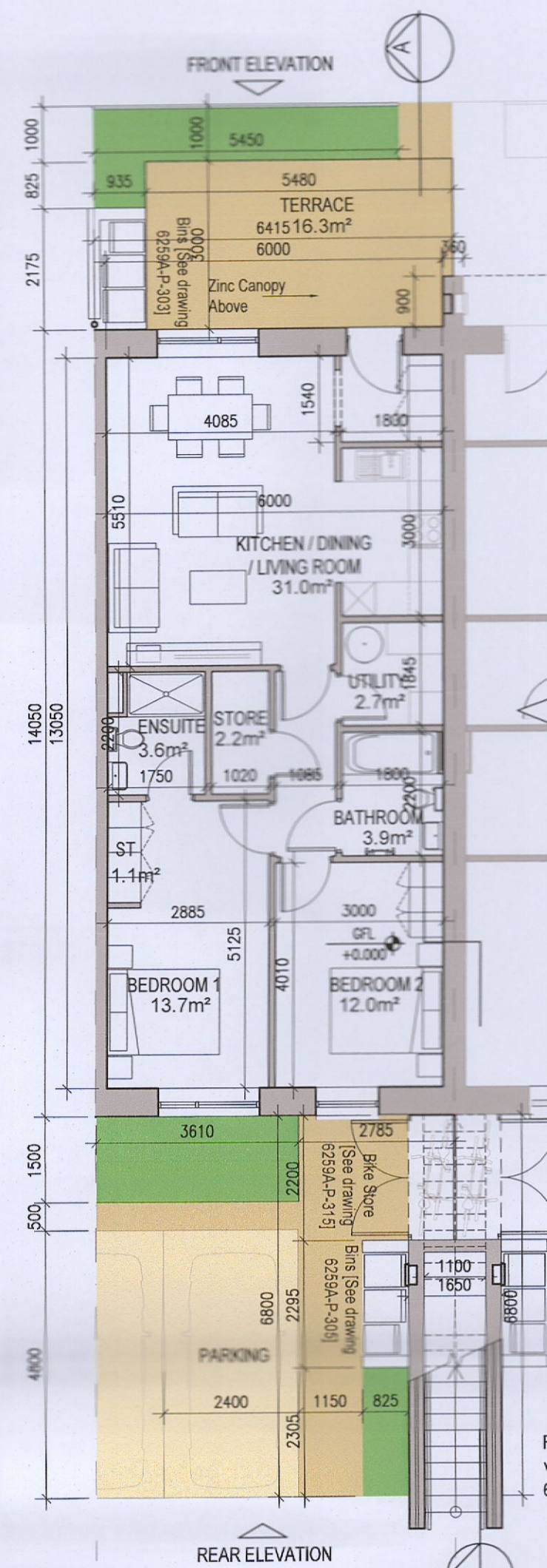
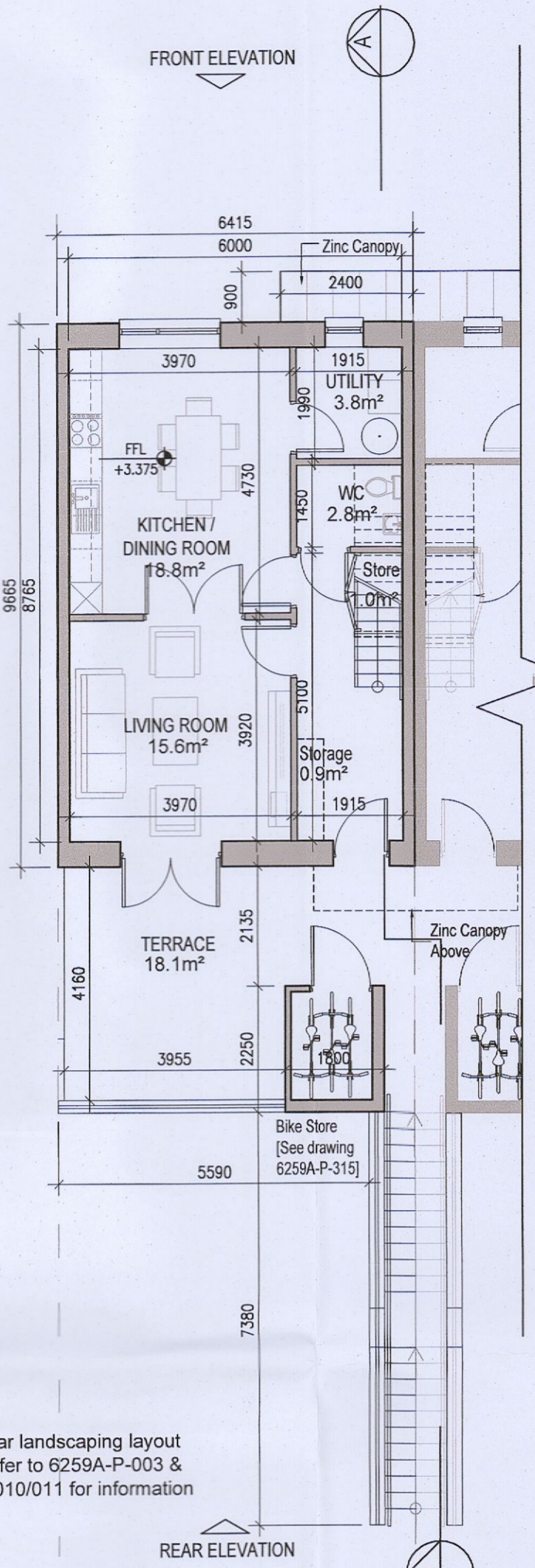


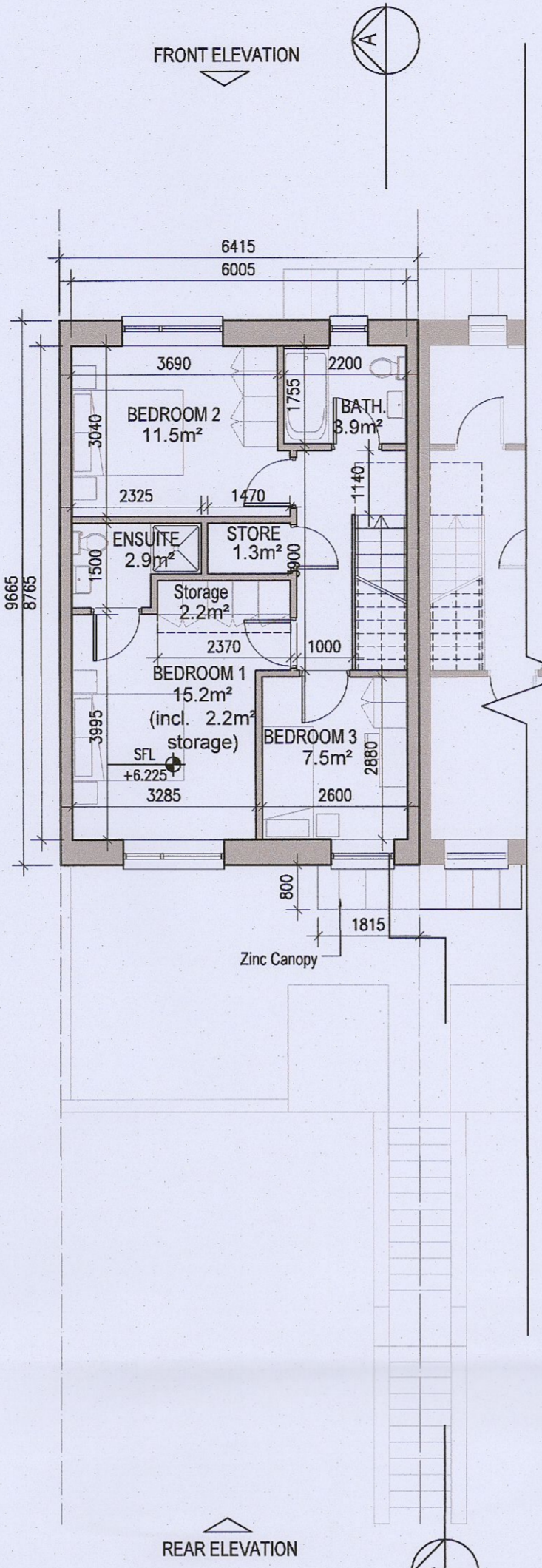
DUPLEX TYPE G1 HANDED



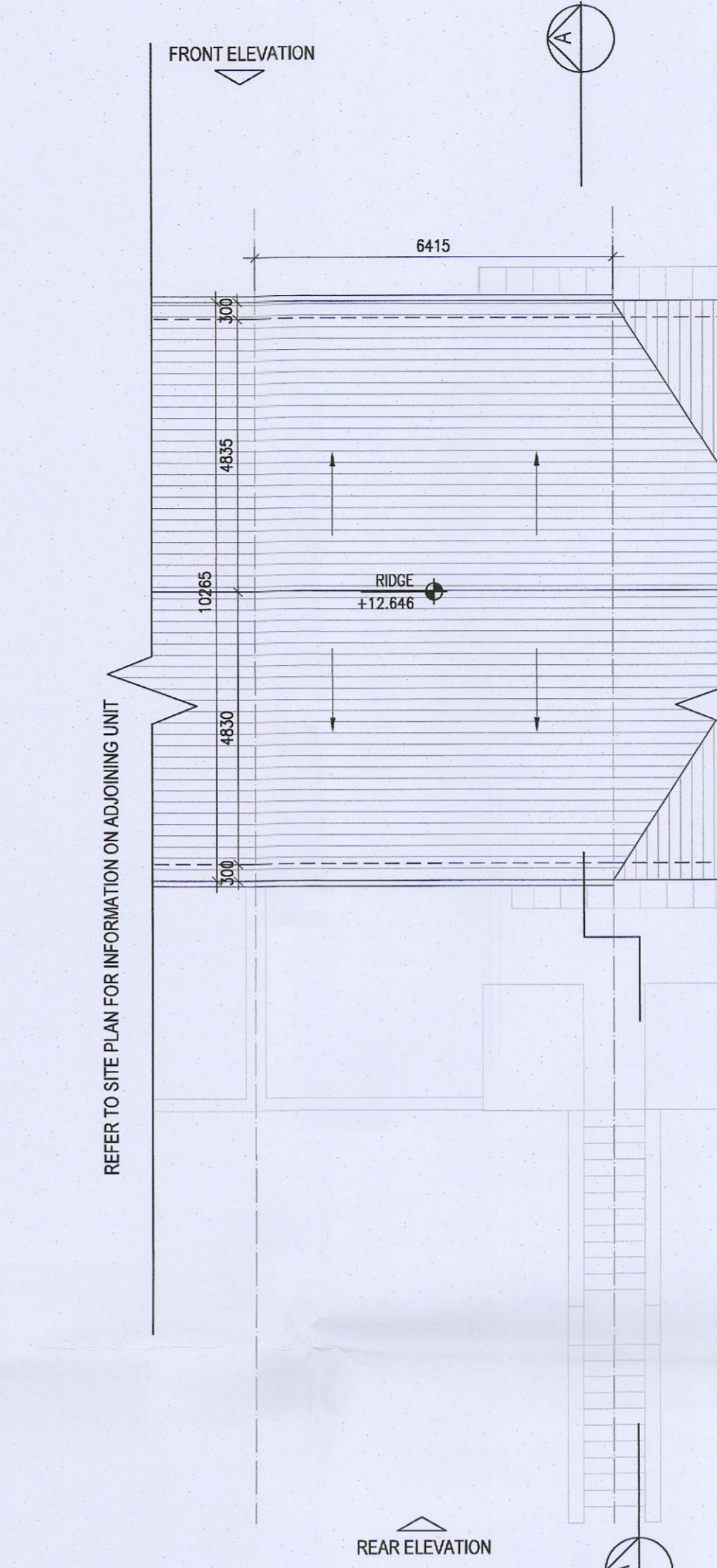
01 Ground Floor Plan
1:100@A1



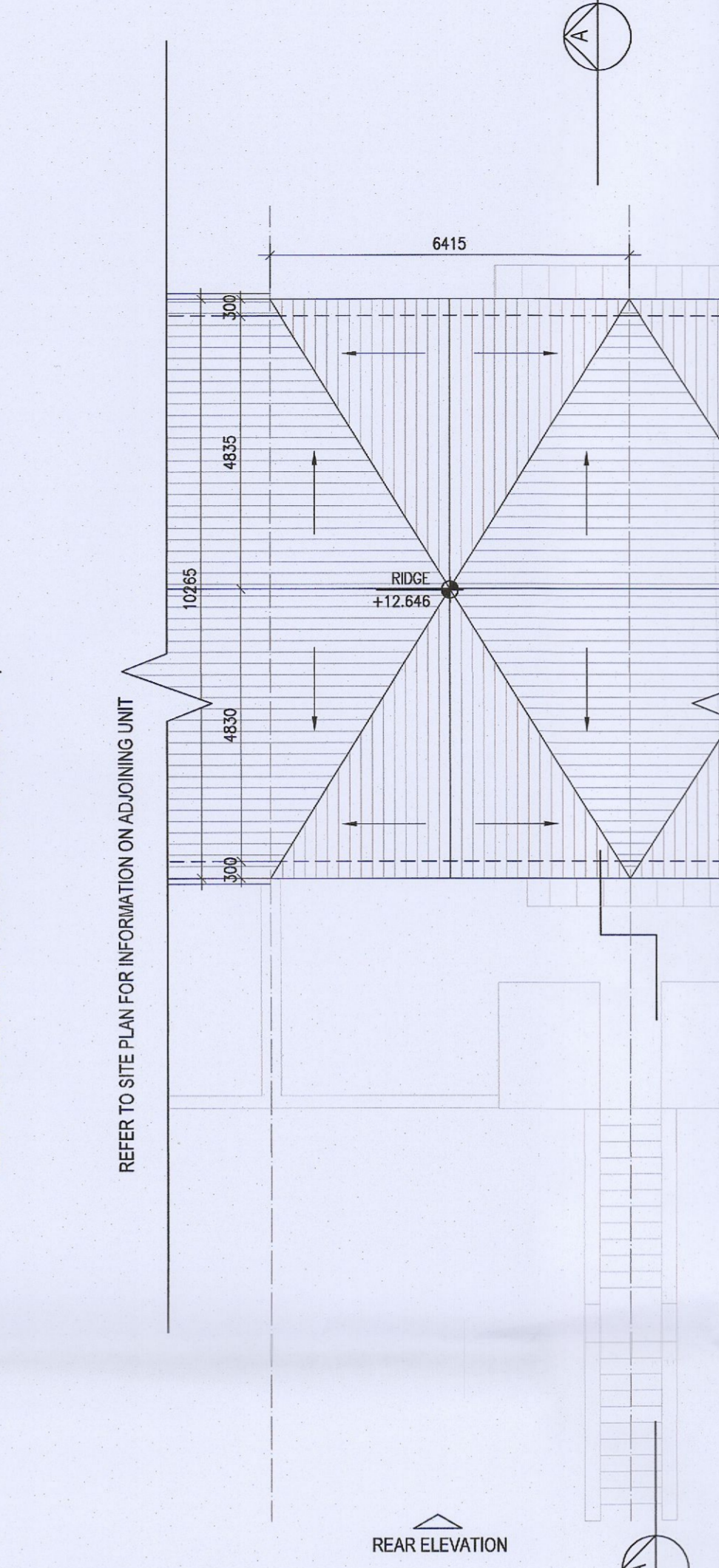
02 First Floor Plan
1:100@A1



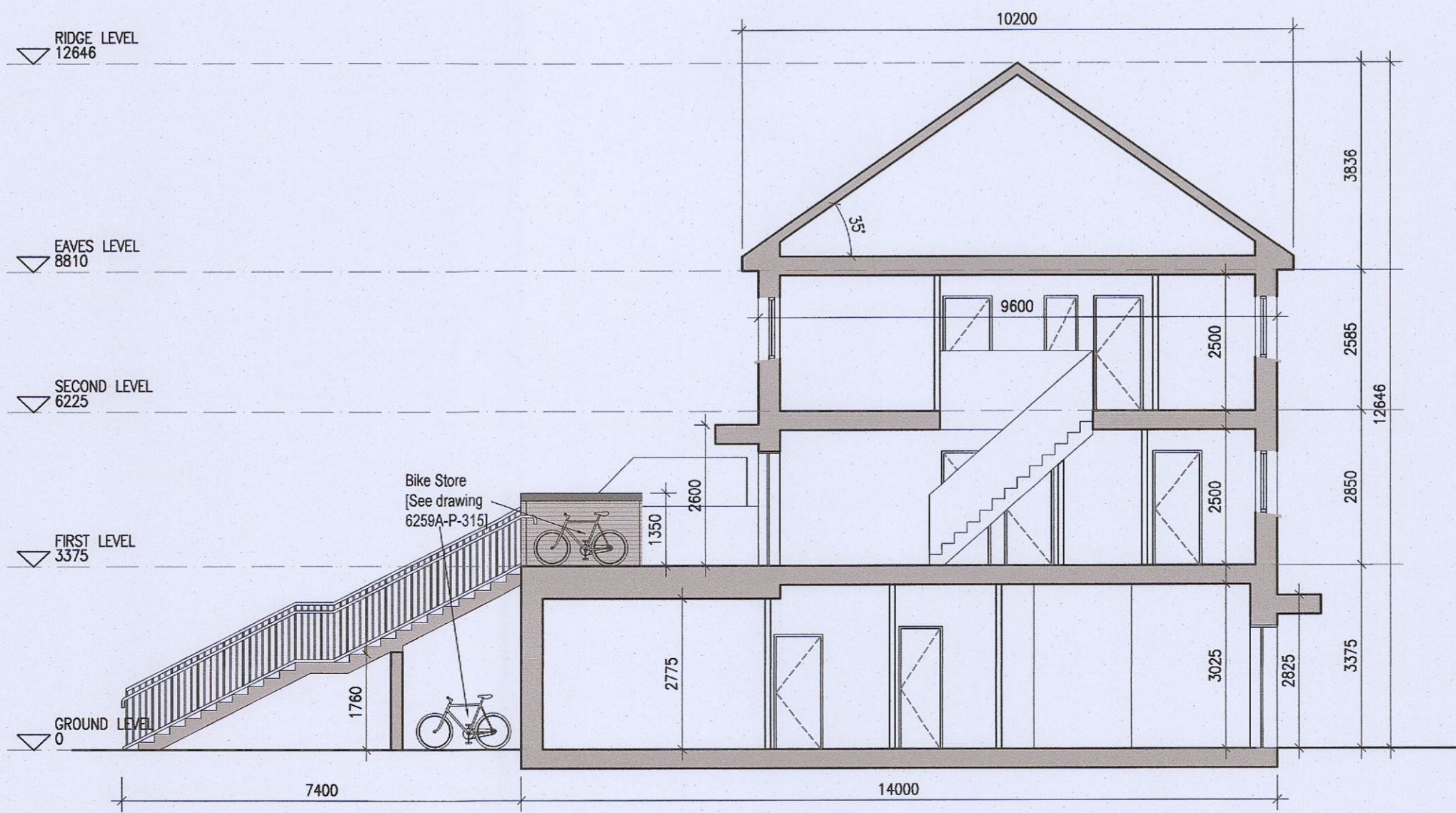
03 Second Floor Plan
1:100@A1



04 Roof Floor Plan G1.1, G1.2, G1.3 & G1.4
1:100@A1



05 Roof Floor Plan G1.5
1:100@A1



06 Typical Section [A-A]
1:100@A1



Indicates unit locations
KEY PLAN [NTS]

HOUSE TYPES	No. OF UNITS	
Type A1/A2	- 3 bed	15
Type B1/B2	- 3 bed	28
Type C1/C2/C3/C4	- 3 bed	16
Type D	- 4 bed	3
Type E1/E2	- 4 bed	7
Type K1/K2/K3	- 4 bed	6
		75

DUPLEX	No. OF UNITS	
Type F1	- 2 bed	3
Type F2	- 3 bed	3
Type F3	- 3 bed	1
Type F3	- 2 bed	6
Type G1	- 2 bed	33
Type G2	- 2 bed	2
Type G3	- 2 bed	7
Type H1/H2	- 3 bed	2
Type J1	- 2 bed	9
Type J2	- 3 bed	9
Type J2	- 2 bed	3
Type J2	- 3 bed	3
		132
TOTAL NO. OF UNITS		207

EXTERNAL FINISHES

WALLS: PAINTED SAND / CEMENT RENDER OR PROPRIETARY PRECOLOURED RENDER FINISH SELECTED BRICKWORK WHERE INDICATED ON DRAWINGS

WINDOWS: SELECTED PROPRIETARY DOUBLE / TRIPLE GLAZED WINDOW SYSTEM WITH FRAMES TO APPROVED COLOUR OBSCURED GLAZING TO BATHROOMS AND EN-SUITES.

DOORS: SELECTED PROPRIETARY DOORS AND GLAZED SIDE SCREENS TO APPROVED COLOUR.

RAINWATER GOODS: uPVC OR POWDER COATED METAL GUTTERS AND RAINWATER PIPES TO SELECTED COLOUR.

MAIN ROOF: CONCRETE ROOF TILES IN SELECTED COLOUR.

LOW LEVEL PROJECTION: ZINC CANOPY TO ENTRANCE OF UNITS

OTHER ITEMS: uPVC OR POWDER COATED METAL FASCIAS, SOFFITS AND BARGE BOARDS PAINTED MILDSTEEL RAILINGS AND BALUSTRADES

G1.A [2 Bed] - Ground floor area	78.3 m²
G1.B [3 Bed] - First floor area	52.6 m²
Second floor area	52.6 m²
Total Floor Area (G1.B):	105.2 m²

REFER TO LANDSCAPE ARCHITECT'S DRAWINGS FOR ALL LANDSCAPING DETAILS

DUPLEX TYPE G1 HANDED

- Notes**
- Copyright Reserved
 - Work to figured dimensions only. Do not scale drawing.
 - The contractor is responsible for checking all levels and dimensions on site and shall refer all discrepancies to the Architect.
 - Where appropriate, for details of c.c. structure, or mechanical and electrical details, see Engineers drawings.
 - Proprietary items shall be fixed in strict accordance with manufacturers instructions.
 - Sizes of proprietary items shall be checked with manufacturer.
 - The contractor shall be responsible for the coordination of structure, finishes and services.

Issue Status	Progress
Planning Application	■
Fire Cert	
Disability Cert	
Tender	
Construction	
As Built	
Information Only	

No.	Date	Revision	Initials
01	14.10.2022	ISSUED FOR PLANNING	ED
02	16.03.2023	ISSUED FOR PLANNING RFI	ED

Project	Aderrig Phase 3 Adamstown SDZ Residential Development
Drawing Title	Duplex Type G1 (mid terrace) Handed-Plans, Section
Drawing No	6259A-P-208
Scale	1:100@A1
Rev	02
Drawn	IFJ; ED
Date	MAR 2023

6 - 7 HARQUITT TERRACE, DUBLIN 2, IRELAND
t: +353 1 916 2400 f: +353 1 678 7385
e: architects@bkd.ie www.bkd.ie

bkd architects
BURKE-KENNEDY DOYLE