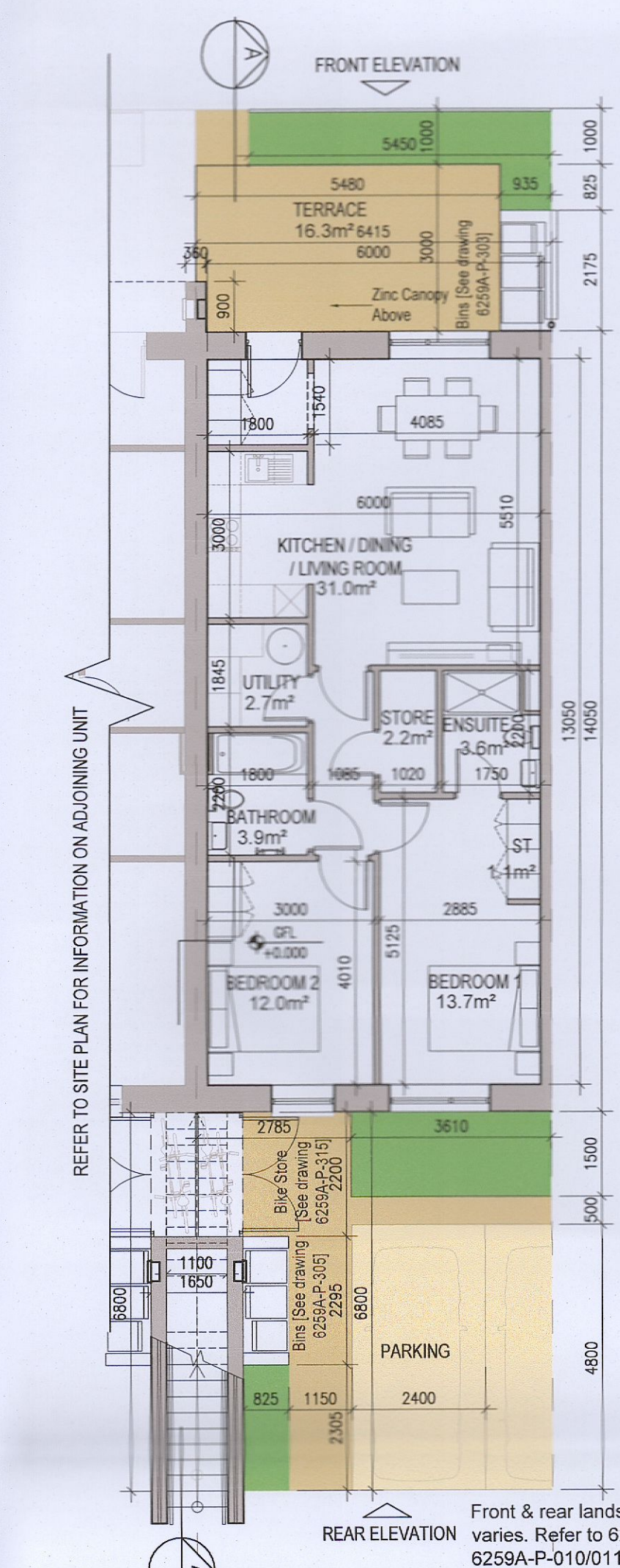
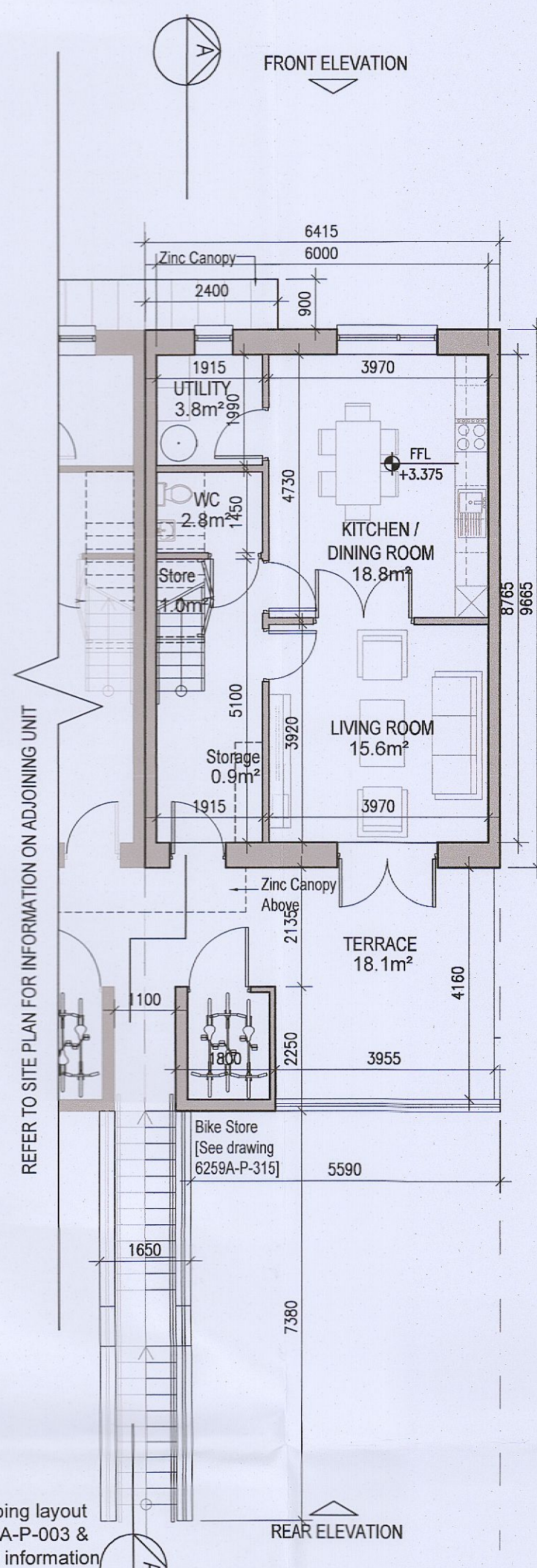


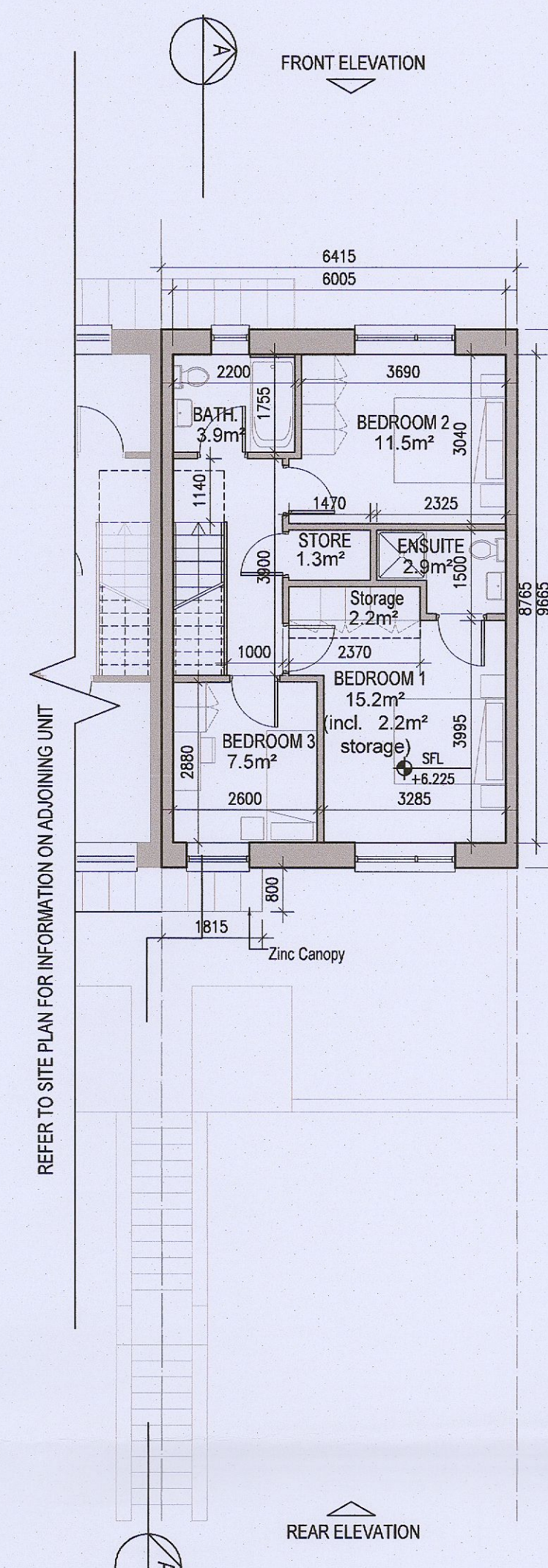
DUPLEX TYPE G1



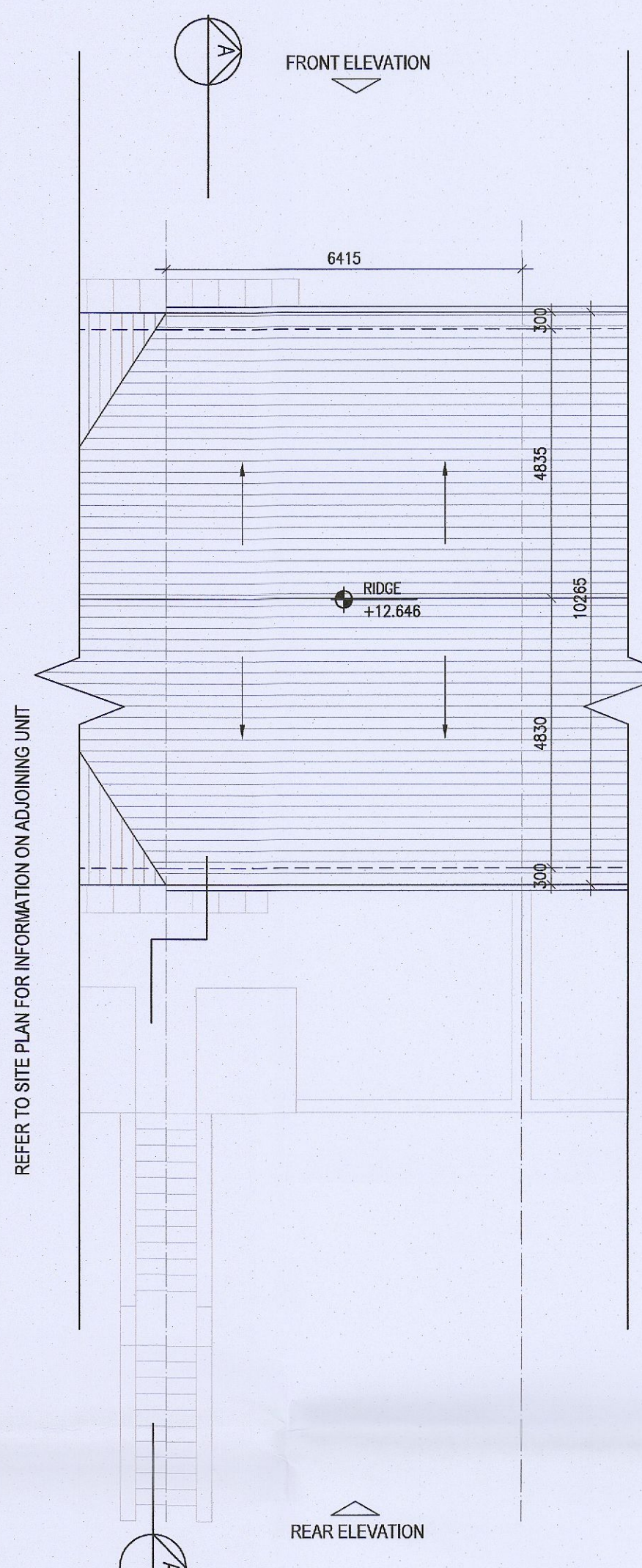
01 Ground Floor Plan [G1.A]



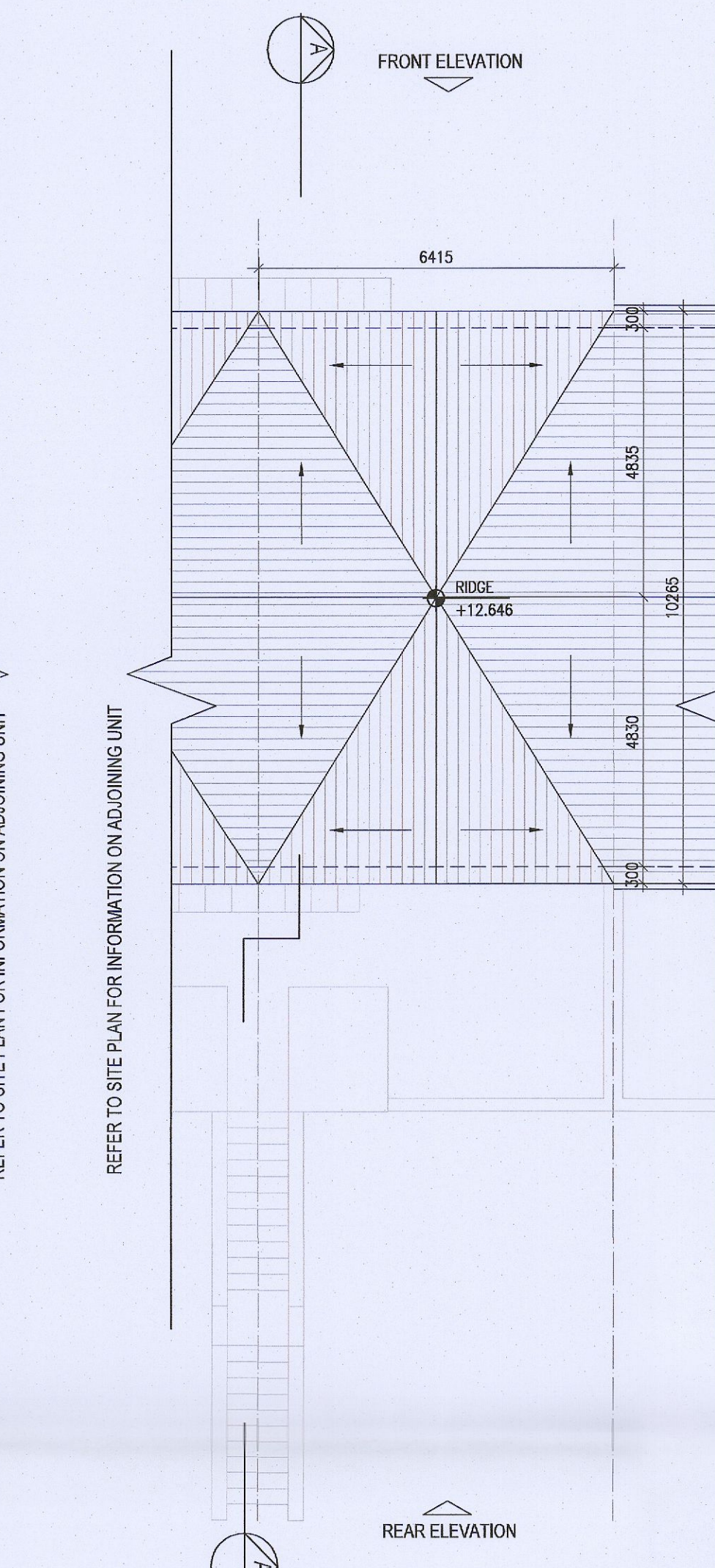
02 First Floor Plan [G1.B]



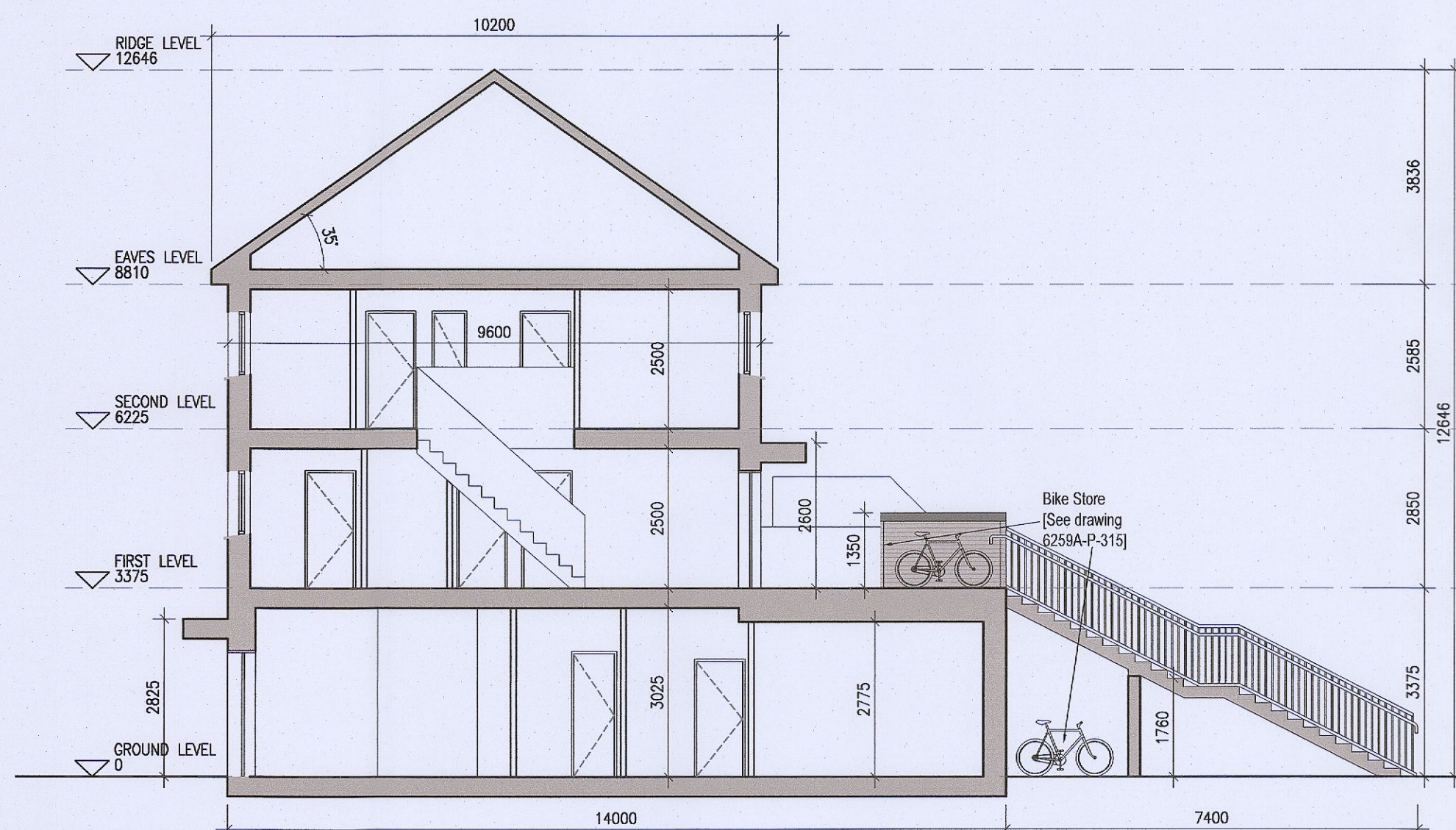
03 Second Floor Plan [G1.B]



04 Roof Plan G1.1, G1.2, G1.3 & G1.4
1:100@A1



05 Roof Plan G1.5
1:100@A1



06 Typical Section [A-A]
1:100@A1



Indicates unit locations
KEY PLAN [NTS]

HOUSE TYPES	No. OF UNITS
Type A1/A2 - 3 bed	15
Type B1/B2 - 3 bed	28
Type C1/C2/C3/C4 - 3 bed	16
Type D - 4 bed	3
Type E1/E2 - 4 bed	7
Type K1/K2/K3 - 4 bed	6
	75

DUPLEX	No. OF UNITS
Type F1 - 2 bed	3
Type F2 - 2 bed	3
Type F3 - 2 bed	1
Type G1 - 2 bed	6
Type G2 - 2 bed	6
Type G3 - 2 bed	2
Type H1/H2 - 3 bed	7
Type J1 - 2 bed	2
Type J2 - 2 bed	2
Type J3 - 2 bed	9
Type J4 - 2 bed	9
Type J5 - 2 bed	3
Type J6 - 3 bed	3
	132

TOTAL NO. OF UNITS 207

EXTERNAL FINISHES

WALLS: PAINTED SAND / CEMENT RENDER OR PROPRIETARY PRECOLOURED RENDER FINISH SELECTED BRICKWORK WHERE INDICATED ON DRAWINGS

WINDOWS: SELECTED PROPRIETARY DOUBLE / TRIPLE GLAZED WINDOW SYSTEM WITH FRAMES TO APPROVED COLOUR OBSERVED GLAZING TO BATHROOMS AND EN-SUITES.

DOORS: SELECTED PROPRIETARY DOORS AND GLAZED SIDE SCREENS TO APPROVED COLOUR.

RAINWATER GOODS: uPVC OR POWDER COATED METAL GUTTERS AND RAINWATER PIPES TO SELECTED COLOUR.

MAIN ROOF: CONCRETE ROOF TILES IN SELECTED COLOUR.

LOW LEVEL PROJECTION: ZINC CANOPY TO ENTRANCE OF UNITS

OTHER ITEMS: uPVC OR POWDER COATED METAL FASCIAS, SOFFITS AND BARGE BOARDS PAINTED MILDSTEEL RAILINGS AND BALUSTRADES

G1.A [2 Bed] - Ground floor area	78.3 m²
G1.B [3 Bed] - First floor area	52.6 m²
Second floor area	52.6 m²
Total Floor Area (G1.B):	105.2 m²

REFER TO LANDSCAPE ARCHITECT'S DRAWINGS FOR ALL LANDSCAPING DETAILS

DUPLEX TYPE G1

- Notes:**
- Copyright Reserved
 - Work to figured dimensions only. Do not scale drawing.
 - The contractor is responsible for checking all levels and dimensions on site and shall refer all discrepancies to the Architect
 - Where appropriate, for details of i.e. structure, or mechanical and electrical details, see Engineers drawings
 - Proprietary items shall be fixed in strict accordance with manufacturers instructions.
 - Sizes of proprietary items shall be checked with manufacturer.
 - The contractor shall be responsible for the coordination of structure, finishes and services.

Issue Status	As Built
Progress	
Planning Application	
Fire Cert	
Disability Cert	
Tender	
Construction	
Information Only	

No.	Date	Revision	Initials
01	14.10.2022	ISSUED FOR PLANNING	ED
02	16.03.2023	ISSUED FOR PLANNING RFI	ED

Project	Aderrig Phase 3 Adamstown SDZ Residential Development
Drawing Title	Duplex Type G1 (mid terrace) Non-handed-Plans, Section
Drawing No	6259A-P-206
Scale	1:100@A1
Rev	02
Drawn	IFJ; ED
Date	MAR 2023

6-7 HAIRCOURT TERRACE, DUBLIN 2, IRELAND
t: +353 1 618 2600 f: +353 1 476 7356
www.bkd.ie
bkdarchitects
BURKE-KENNEDY DOYLE