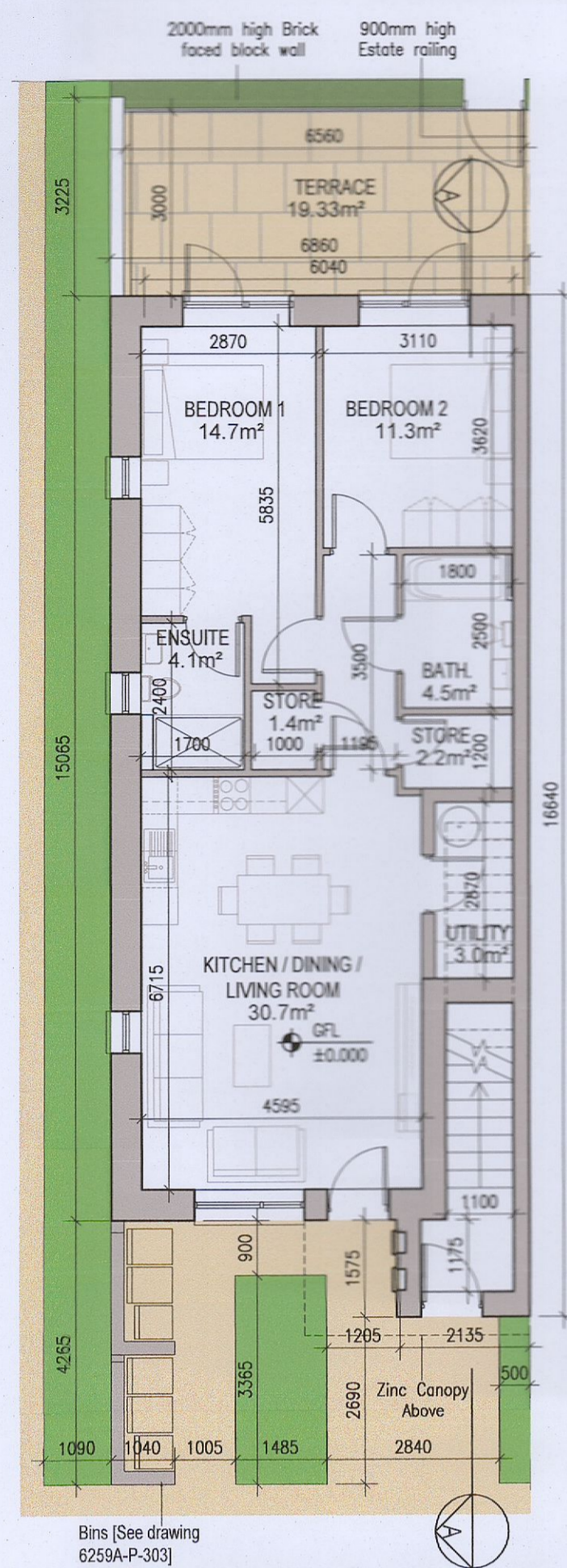
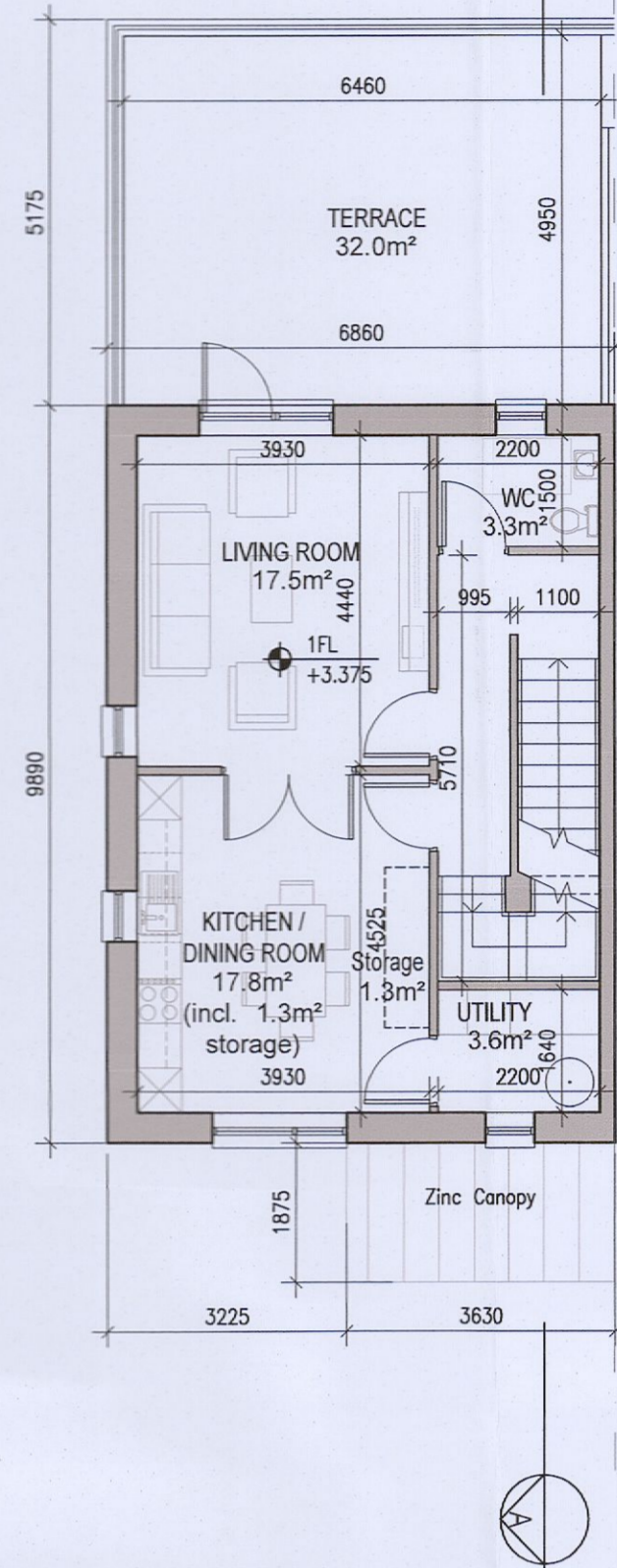


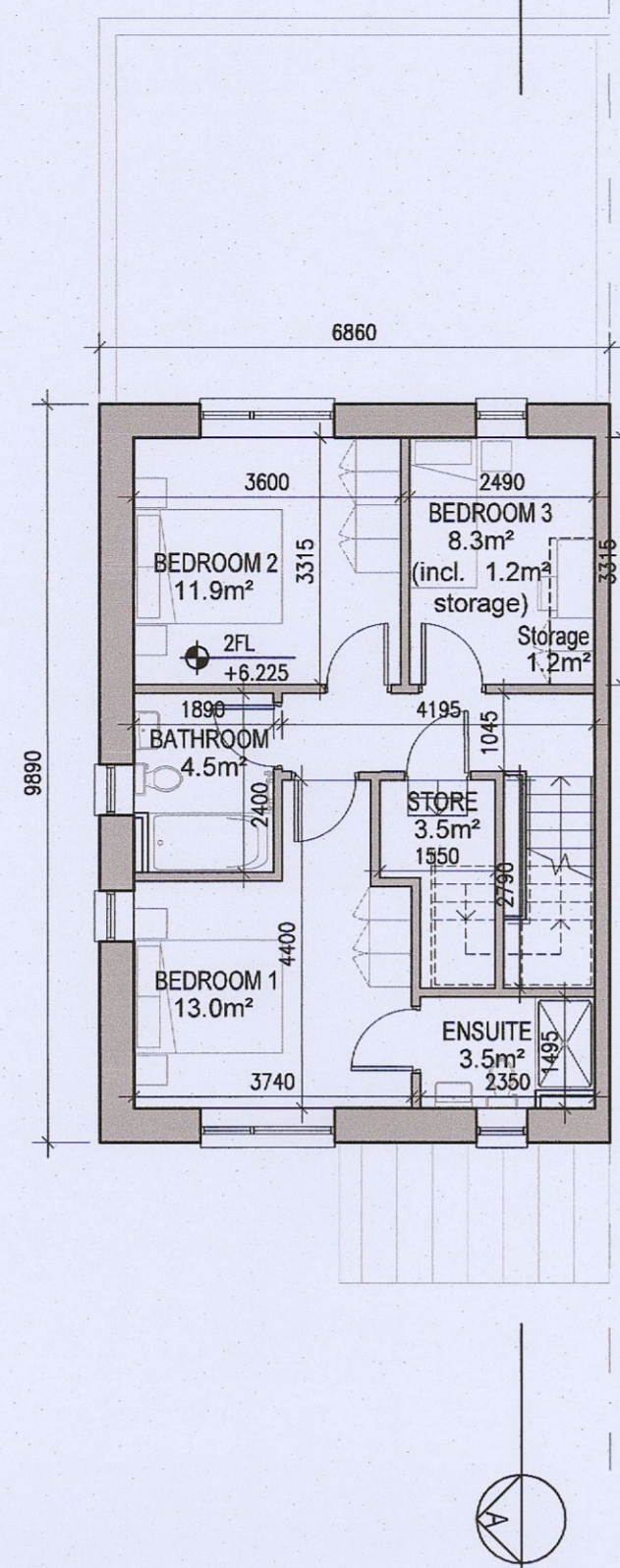
DUPLEX TYPE F2



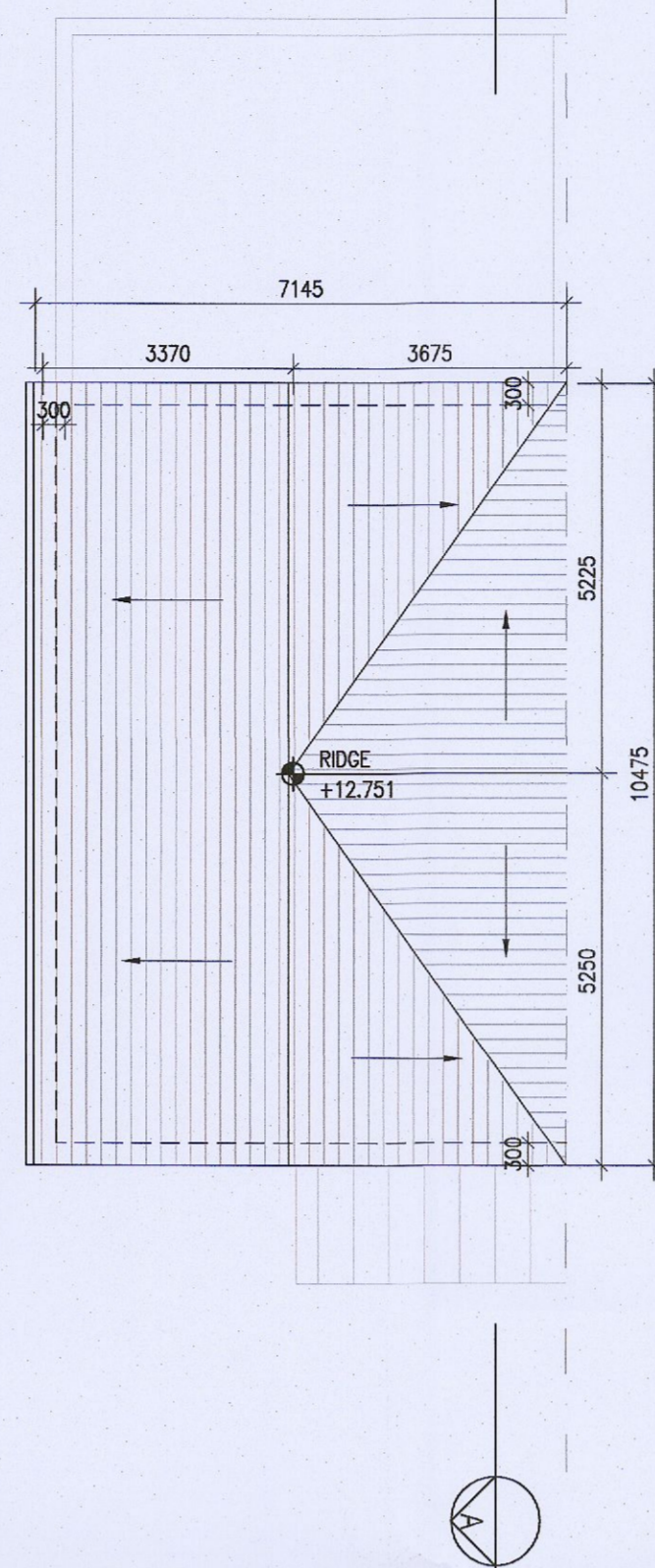
01 Ground Floor Plan [F2.A]
1:100@A1



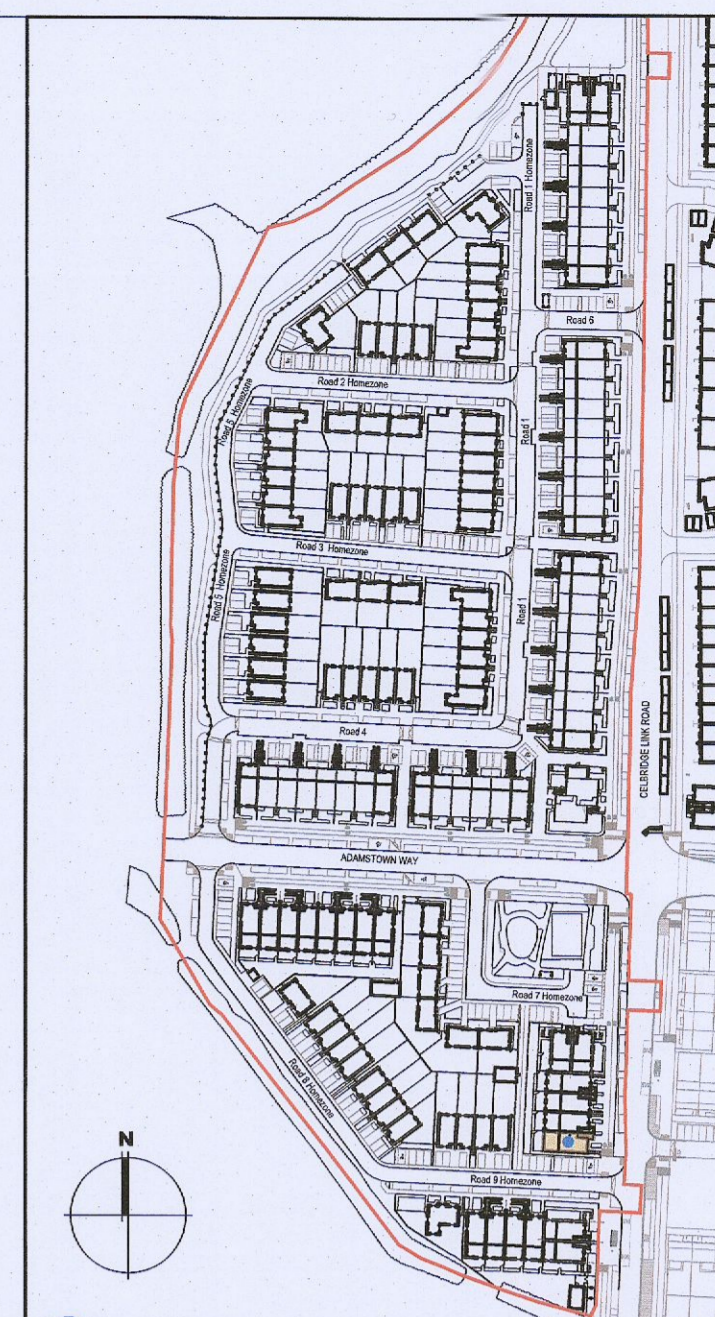
02 First Floor Plan [F2.B]
1:100@A1



03 Second Floor Plan [F2.B]
1:100@A1



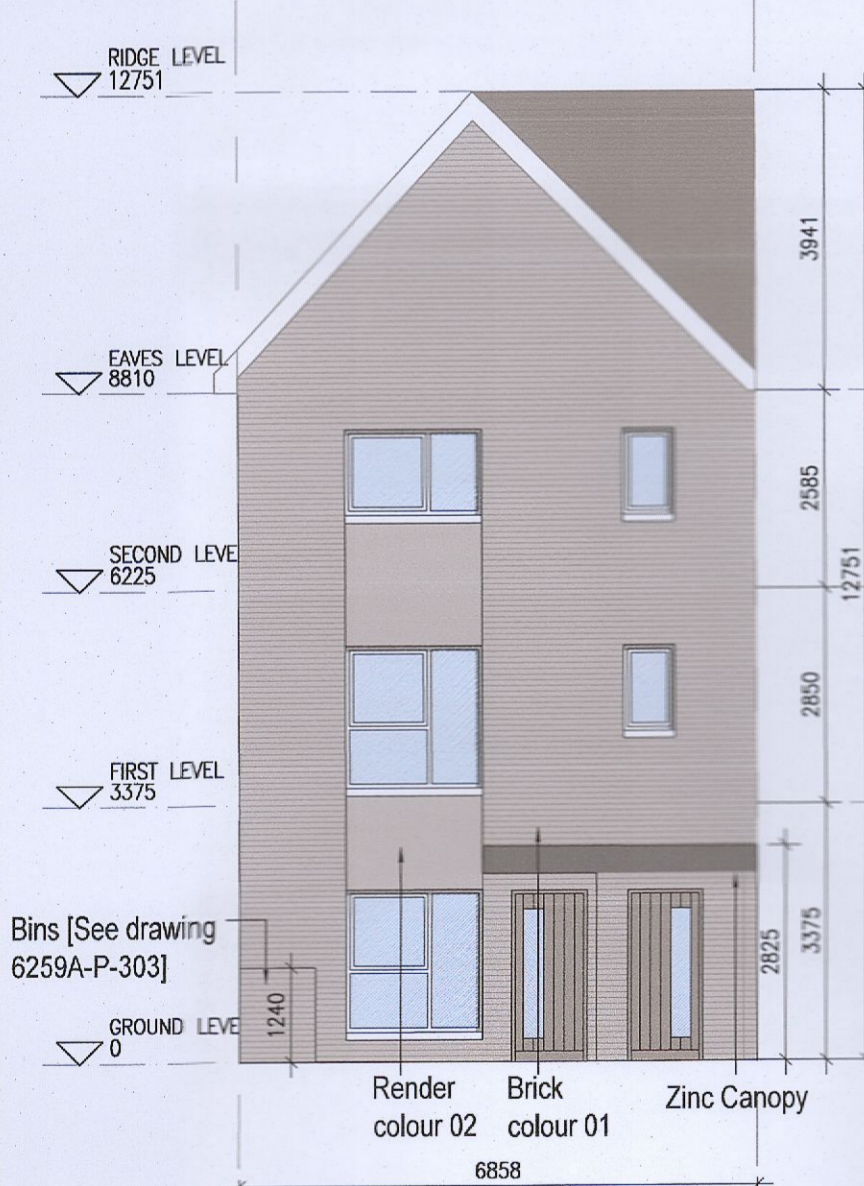
04 Roof Floor Plan
1:100@A1



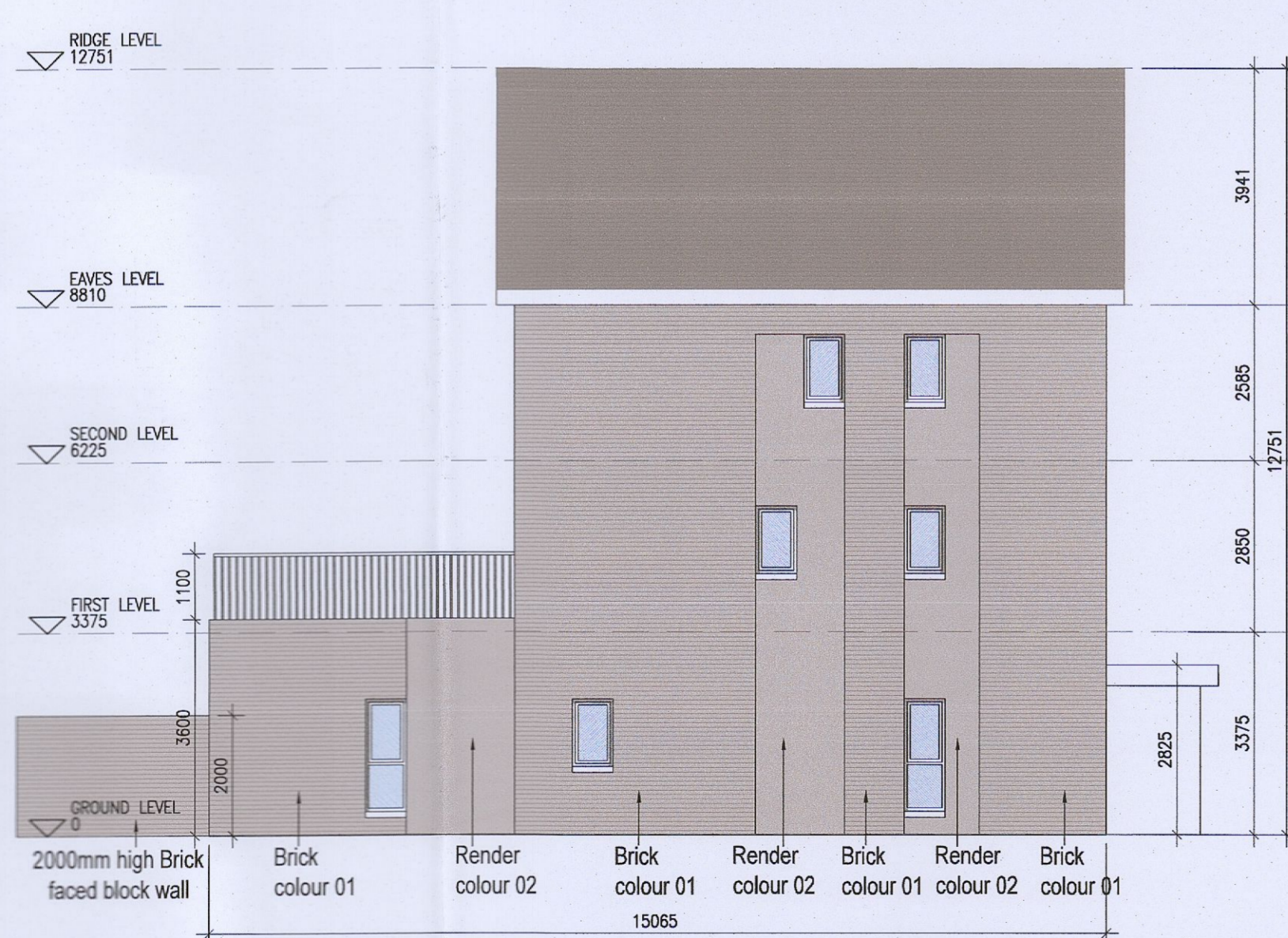
Indicates unit locations
KEY PLAN [NTS]

HOUSE TYPES	No. OF UNITS
Type A1/A2	- 3 bed 15
Type B1/B2	- 3 bed 28
Type C1/C2/C3/C4	- 3 bed 16
Type D	- 4 bed 3
Type E1/E2	- 4 bed 7
Type K1/K2/K3	- 4 bed 6
	75

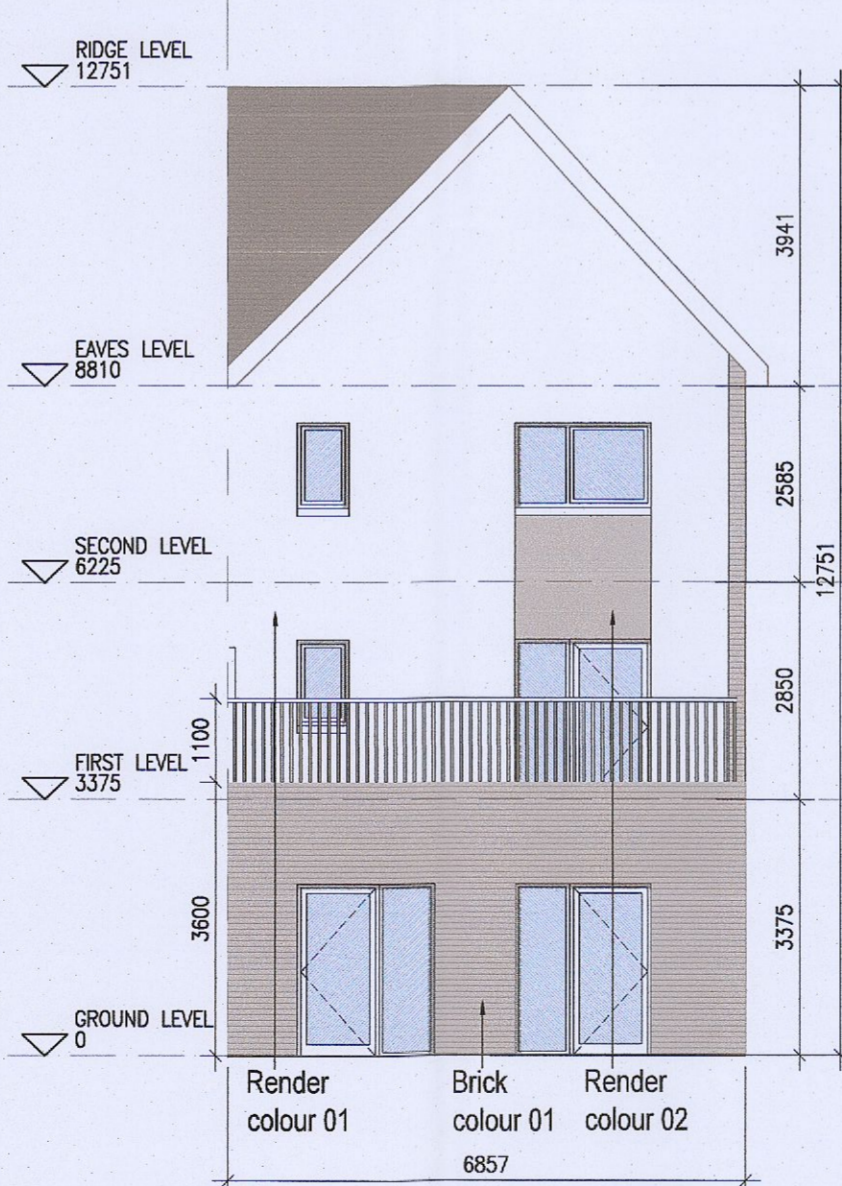
DUPLEX	No. OF UNITS
Type F1	- 2 bed 3
Type F2	- 2 bed 1
Type F3	- 2 bed 6
Type G1	- 2 bed 33
Type G2	- 2 bed 33
Type G3	- 2 bed 2
Type H1/H2	- 3 bed 7
Type H1/H2	- 3 bed 2
Type J1	- 2 bed 9
Type J2	- 3 bed 9
Type J2	- 2 bed 3
Type J2	- 3 bed 3
TOTAL NO. OF UNITS	132
	207



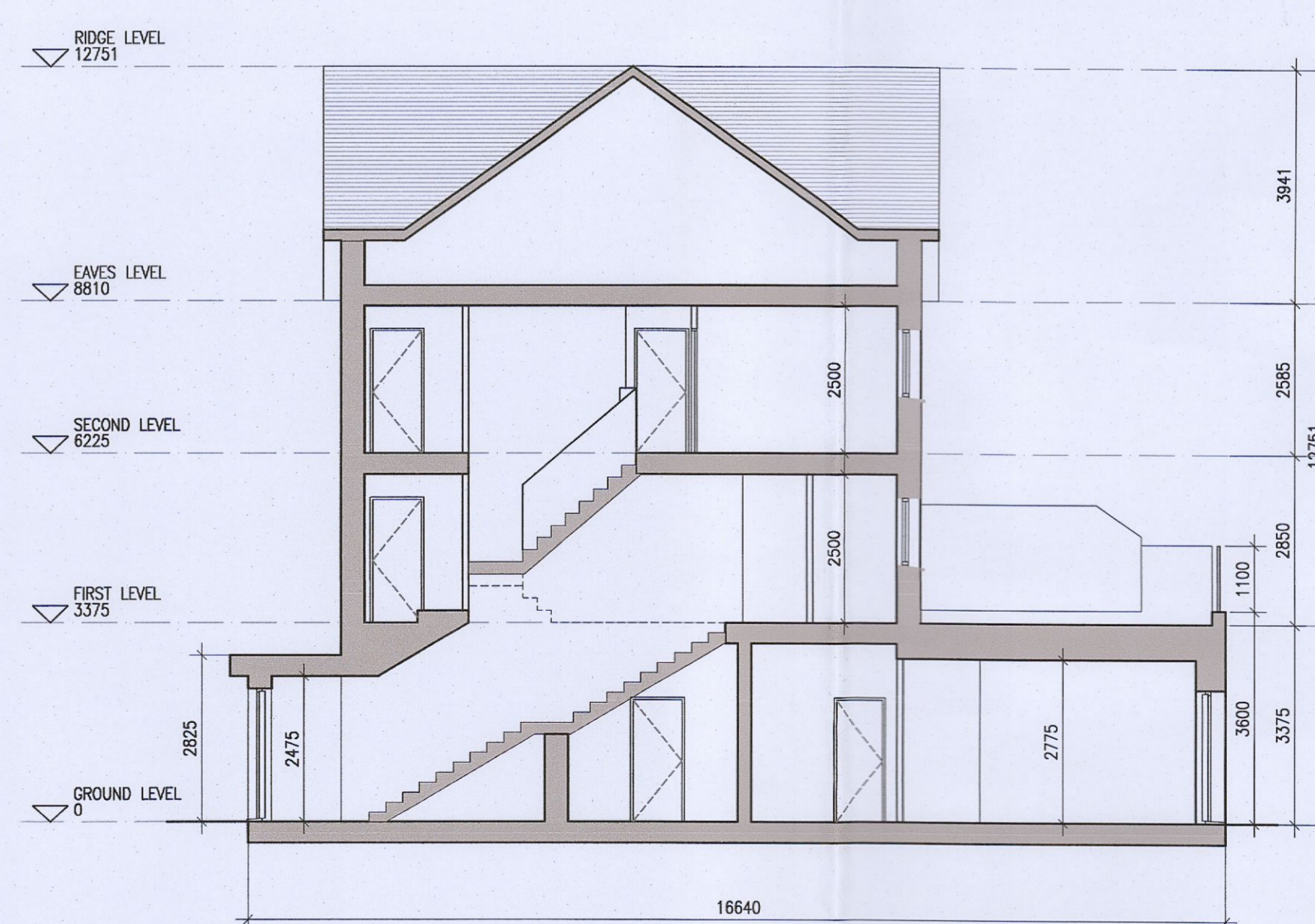
05 Front Elevation
1:100@A1



06 Side Elevation
1:100@A1



07 Rear Elevation
1:100@A1



08 Typical Section [A-A]
1:100@A1

EXTERNAL FINISHES

WALLS: PAINTED SAND / CEMENT RENDER OR PROPRIETARY PRECOLOURED RENDER FINISH. SELECTED BRICKWORK WHERE INDICATED ON DRAWINGS.

WINDOWS: SELECTED PROPRIETARY DOUBLE / TRIPLE GLAZED WINDOW SYSTEM WITH FRAMES TO APPROVED COLOUR. OBSCURED GLAZING TO BATHROOMS AND EN-SUITES.

DOORS: SELECTED PROPRIETARY DOORS AND GLAZED SIDE SCREENS TO APPROVED COLOUR.

RAINWATER GOODS: uPVC OR POWDER COATED METAL GUTTERS AND RAINWATER PIPES TO SELECTED COLOUR.

MAIN ROOF: CONCRETE ROOF TILES IN SELECTED COLOUR.

LOW LEVEL PROJECTION: ZINC CANOPY TO ENTRANCE OF UNITS.

OTHER ITEMS: uPVC OR POWDER COATED METAL FASCIAE, SOFFITS AND BARGE BOARDS. PAINTED MILDSTEEL RAILINGS AND BALUSTRADES.

F2.A [2 Bed] - Ground floor area	80.6 m²
F2.B [3 Bed] - Ground floor area	5.7 m²
First floor area	56.7 m²
Second floor area	55.8 m²
Total Floor Area (F2.B):	118.2 m²

REFER TO LANDSCAPE ARCHITECT'S DRAWINGS FOR ALL LANDSCAPING DETAILS

DUPLEX TYPE F2

- Notes**
- Copyright Reserved
 - Work to figured dimensions only. Do not scale drawing.
 - The contractor is responsible for checking all levels and dimensions on site and shall refer all discrepancies to the Architect.
 - Where appropriate, for details of c. structures, or mechanical and electrical details, see Engineers drawings.
 - Proprietary items shall be fixed in strict accordance with manufacturers instructions.
 - Sizes of proprietary items shall be checked with manufacturer.
 - The contractor shall be responsible for the coordination of structure, finishes and services.

Issue Status	Initials
Progress	AM
Planning Application	ED
Fire Cert	
Disability Cert	
Tender	
Construction	
As Built	
Information Only	

No.	Date	Revision	Initials
01	13.10.22	ISSUED FOR PLANNING	AM
02	14.03.23	ISSUED FOR PLANNING RFI	ED

Project	Aderrig Phase 3 - Adamstown SDZ Residential Development
Drawing Title	Duplex Type F2 (end terrace) - Plans, Elevation, Section
Drawing No	6259A-P-203
Scale	1:100@A1
Rev	02
Drawn	IFJ, AM, ED
Date	MAR 2023

6-7 HARCOURT TERRACE, DUBLIN 9, IRELAND
+353-1-618 2000 | +353-1-618 7088
www.bkd.ie

bkdarchitects
BURKE-KENNEDY DOYLE