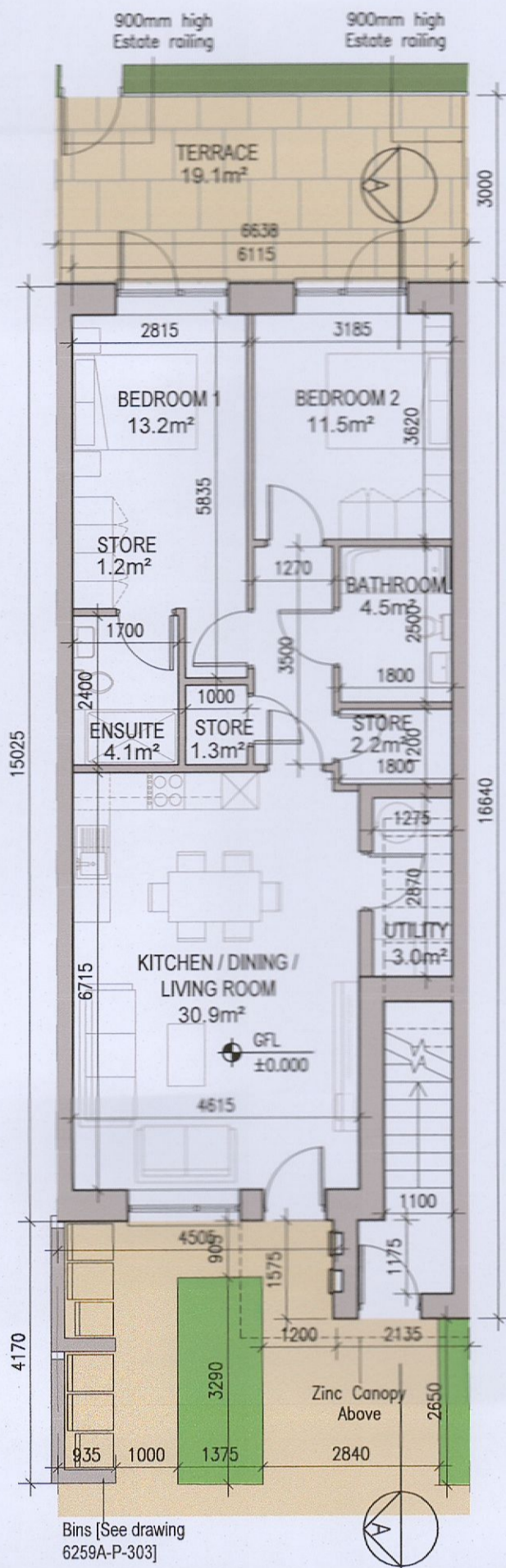
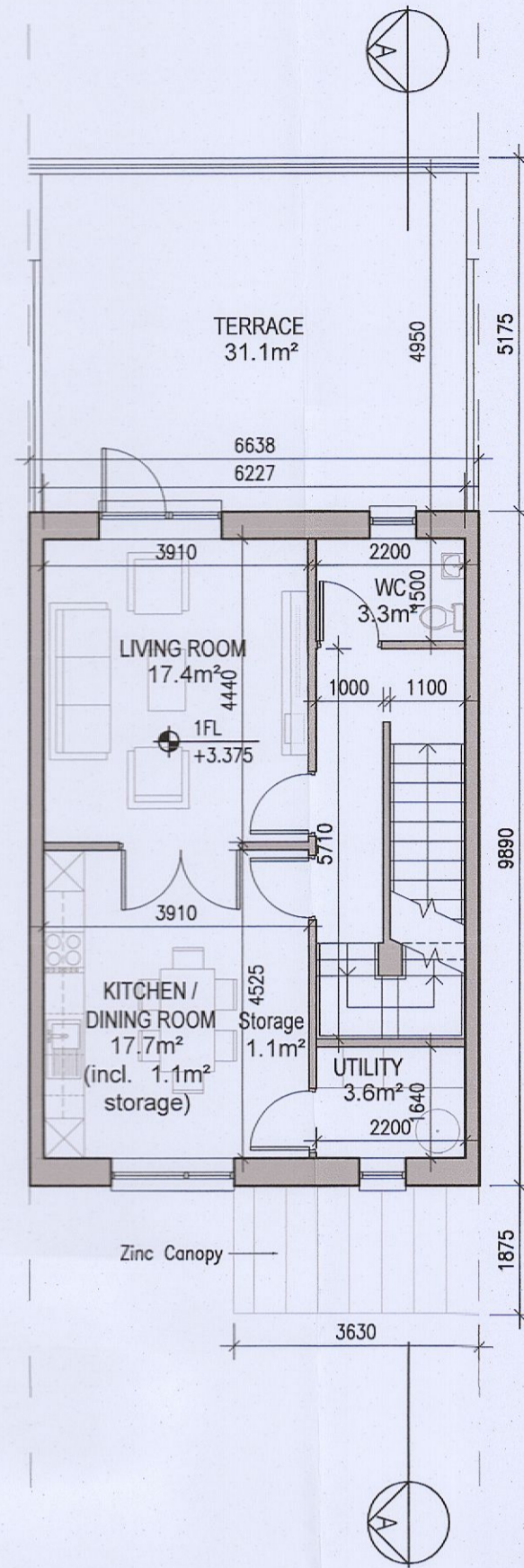


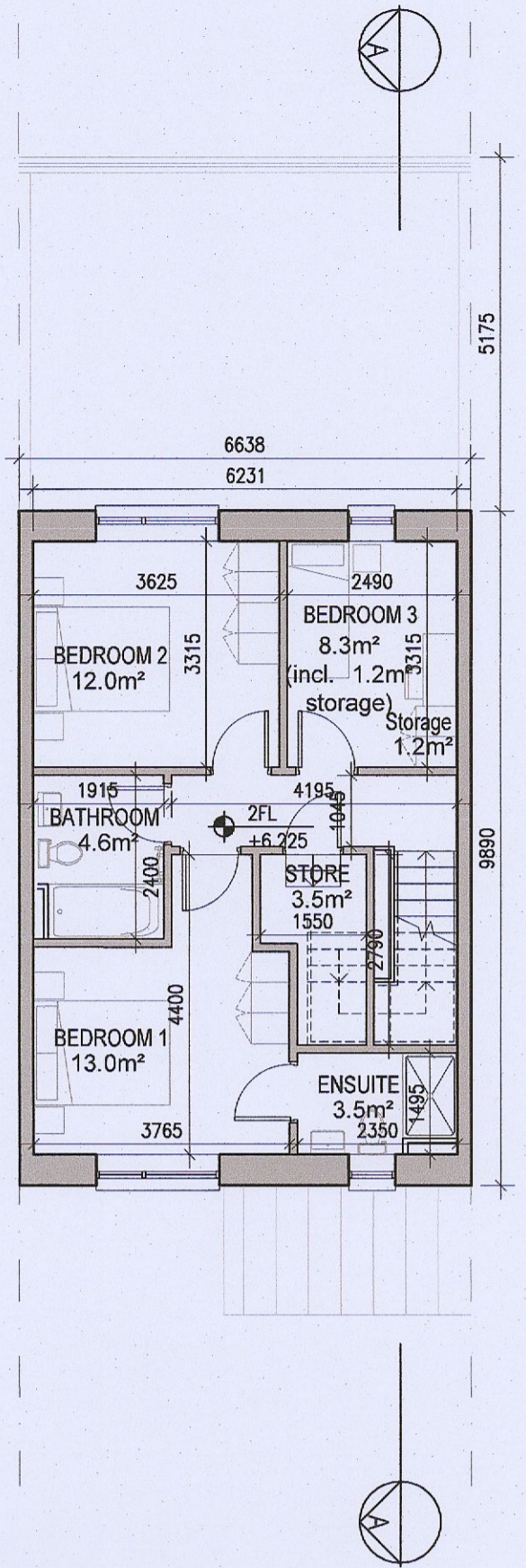
**DUPLEX TYPE F1 [HANDED]**



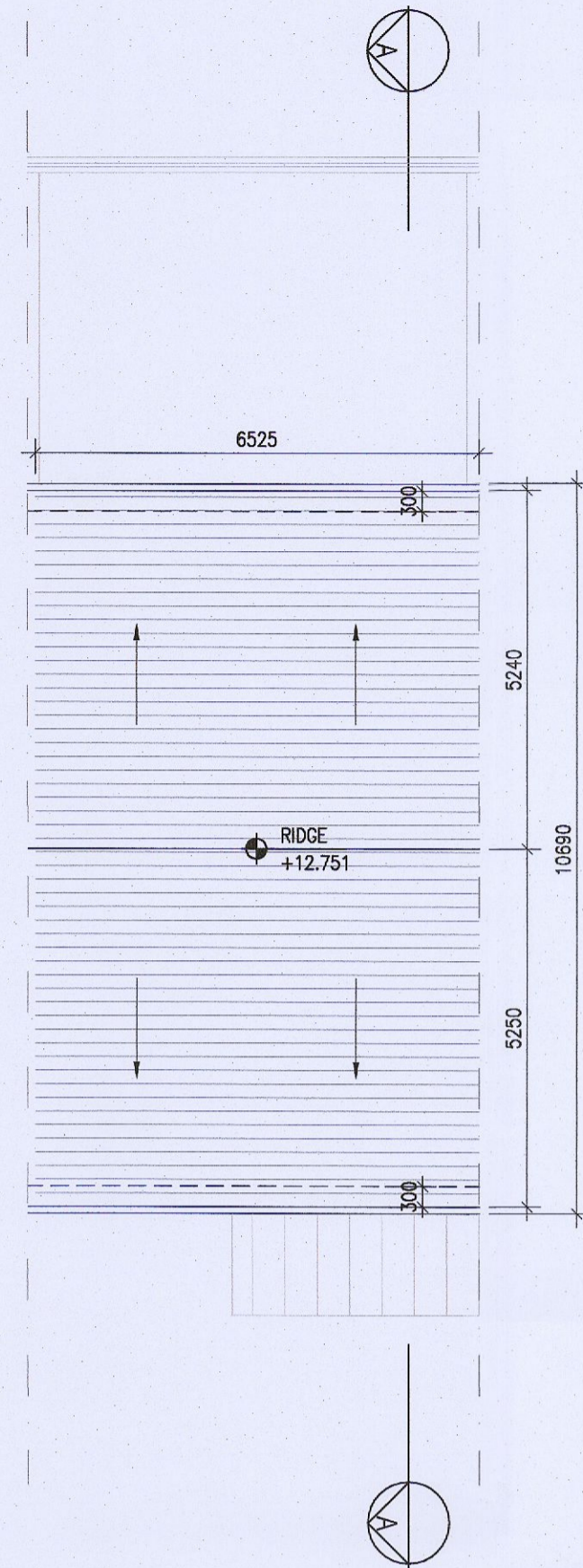
01 Ground Floor Plan [F1.A]  
1:100@A1



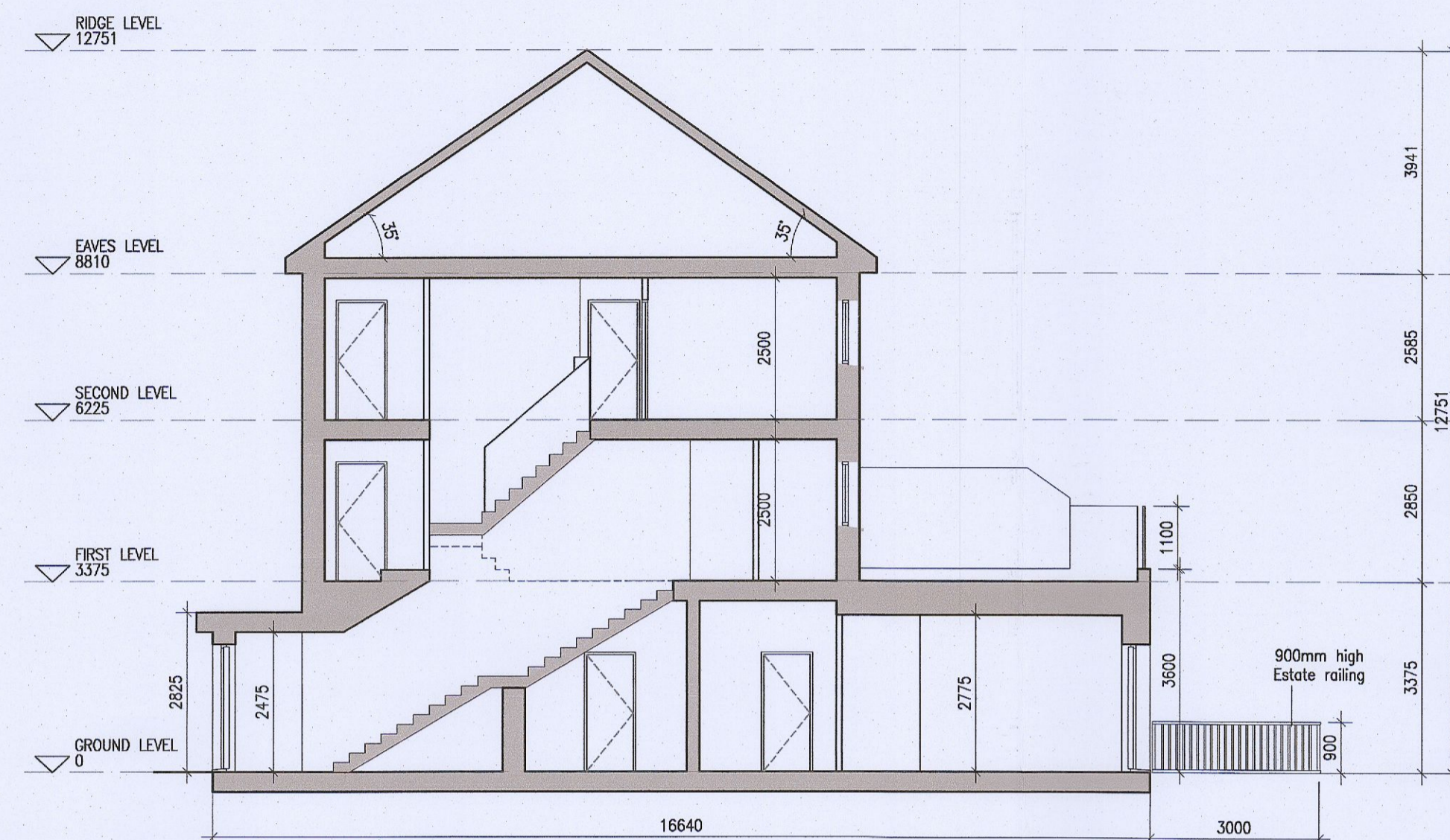
02 First Floor Plan [F1.B]  
1:100@A1



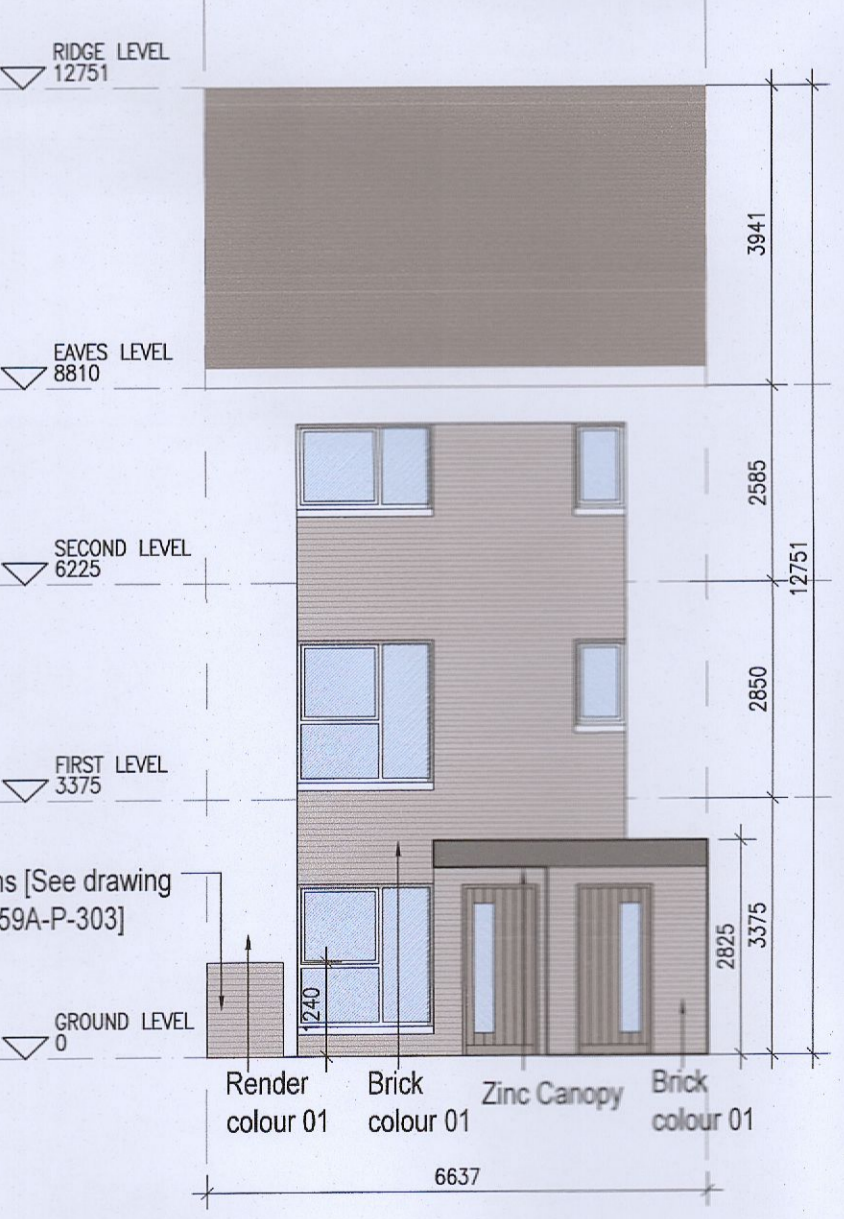
03 Second Floor Plan [F1.B]  
1:100@A1



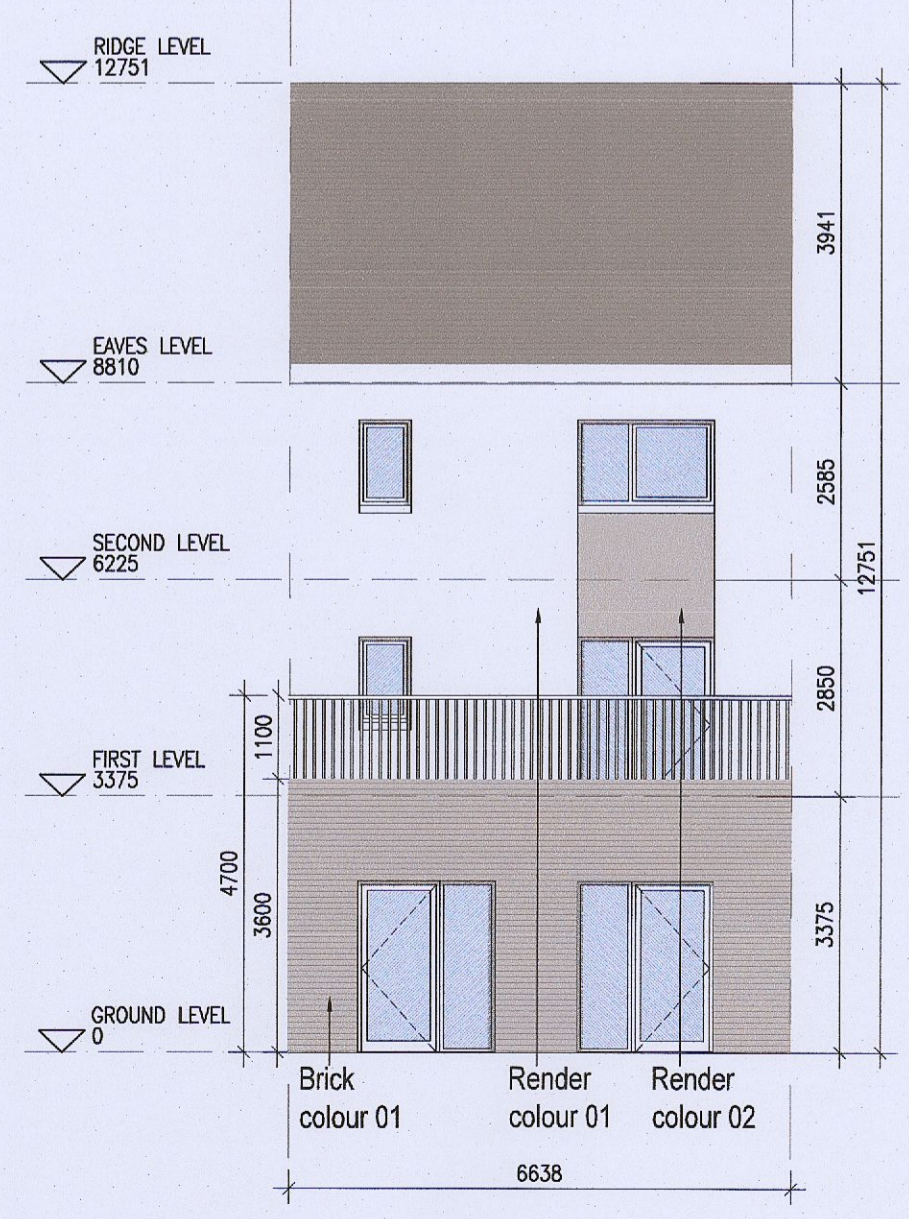
04 Roof Floor Plan  
1:100@A1



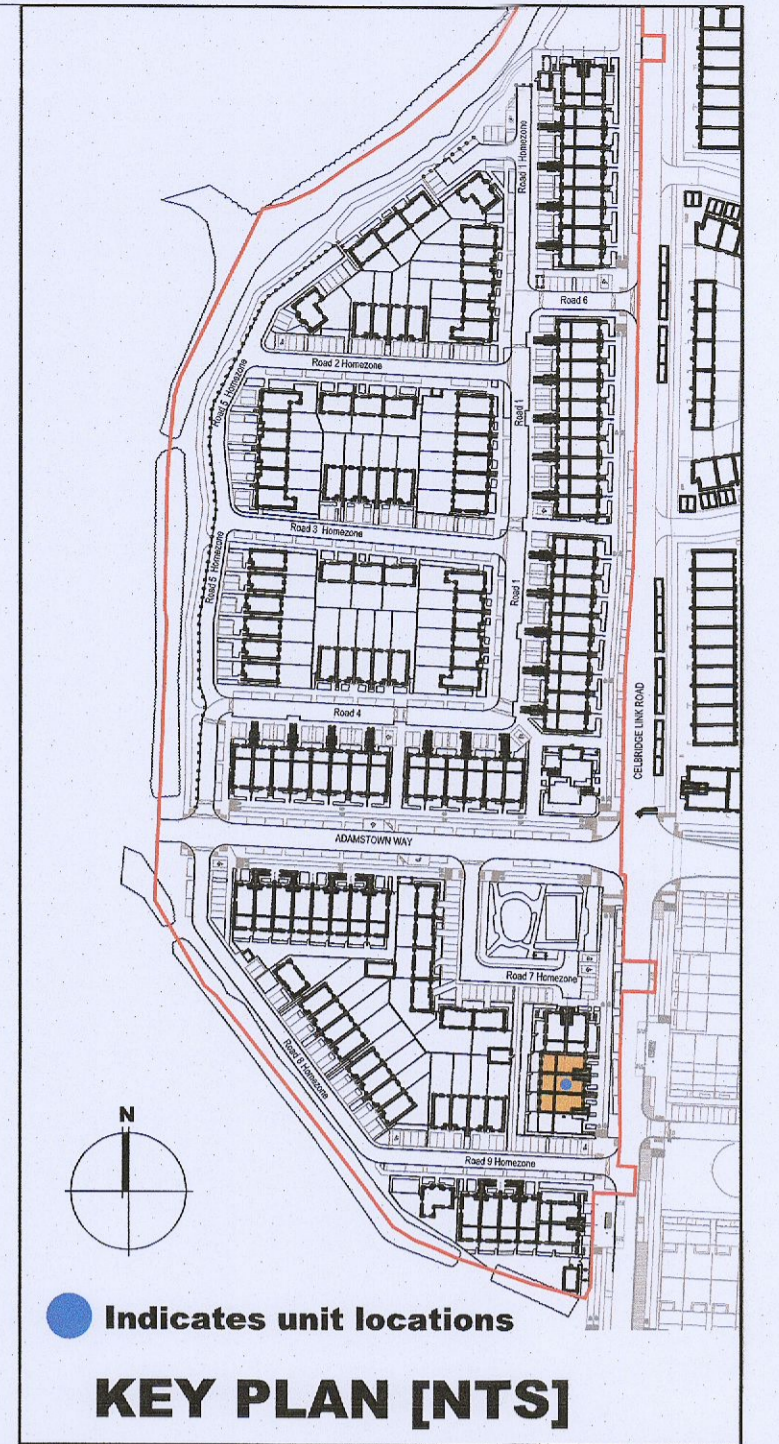
05 Typical Section [A-A]  
1:100@A1



06 Front Elevation F1.1  
1:100@A1



07 Rear Elevation  
1:100@A1



HOUSE TYPES	No. OF UNITS	
Type A1/A2	- 3 bed	15
Type B1/B2	- 3 bed	28
Type C1/C2/C3/C4	- 3 bed	16
Type D	- 4 bed	3
Type E1/E2	- 4 bed	7
Type K1/K2/K3	- 4 bed	6
		75

DUPLEX	No. OF UNITS	
Type F1	- 2 bed	3
Type F2	- 3 bed	3
Type F3	- 2 bed	1
Type G1	- 2 bed	6
Type G2	- 3 bed	6
Type G3	- 2 bed	33
Type H1/H2	- 2 bed	33
Type J1	- 2 bed	2
Type J2	- 3 bed	2
		7
		7
		2
		2
		9
		9
		3
		3
		132
<b>TOTAL NO. OF UNITS</b>		<b>207</b>

**EXTERNAL FINISHES**

**WALLS:** PAINTED SAND / CEMENT RENDER OR PROPRIETARY PRECOLOURED RENDER FINISH SELECTED BRICKWORK WHERE INDICATED ON DRAWINGS

**WINDOWS:** SELECTED PROPRIETARY DOUBLE / TRIPLE GLAZED WINDOW SYSTEM WITH FRAMES TO APPROVED COLOUR OBSCURED GLAZING TO BATHROOMS AND EN-SUITES.

**DOORS:** SELECTED PROPRIETARY DOORS AND GLAZED SIDE SCREENS TO APPROVED COLOUR.

**RAINWATER GOODS:** uPVC OR POWDER COATED METAL GUTTERS AND RAINWATER PIPES TO SELECTED COLOUR.

**MAIN ROOF:** CONCRETE ROOF TILES IN SELECTED COLOUR.

**LOW LEVEL PROJECTION:** ZINC CANOPY TO ENTRANCE OF UNITS

**OTHER ITEMS:** uPVC OR POWDER COATED METAL FASCIAS, SOFFITS AND BARGE BOARDS PAINTED MILDSTEEL RAILINGS AND BALUSTRADES

F1.A [2 Bed] - Ground floor area	80.9 m²
F1.B [3 Bed] - Ground floor area	5.7 m²
First floor area	56.5 m²
Second floor area	56.0 m²
<b>Total Floor Area (F1.B):</b>	<b>118.2 m²</b>

**REFER TO LANDSCAPE ARCHITECT'S DRAWINGS FOR ALL LANDSCAPING DETAILS**

**DUPLEX TYPE F1 HANDED**

- Notes**
- Copyright Reserved
  - Work to signed dimensions only. Do not scale drawing.
  - The contractor is responsible for checking all levels and dimensions on site and shall refer all discrepancies to the Architect
  - Where appropriate, for details of c. structure, or mechanical and electrical details, see Engineers drawings
  - Proprietary items shall be fixed in strict accordance with manufacturers instructions.
  - States of proprietary items shall be checked with manufacturer.
  - The contractor shall be responsible for the coordination of structure, finishes and services.

Issue Status	Progress
Planning Application	■
Fire Cert	
Disability Cert	
Tender	
Construction	
As Built	
Information Only	

No.	Date	Revision	Initials
01	13/10/22	ISSUED FOR PLANNING	AM
02	14/03/23	ISSUED FOR PLANNING RTI	ED

Project	Aderrig Phase 3 Adamstown SDZ Residential Development
Drawing Title	Duplex Type F1 (mid terrace) Handed-Plans, Elevation, Section
Drawing No	6259A-P-202
Scale	1:100@A1
Rev	02
Drawn	IFJ, AM, ED
Date	MAR 2023

6-7 HAIRCOURT TERRACE, DUBLIN 2, IRELAND  
+353-1-618 2400 | +353-1-670 7265  
www.bkd.ie

**bkdarchitects**  
BURKE-KENNEDY DOYLE