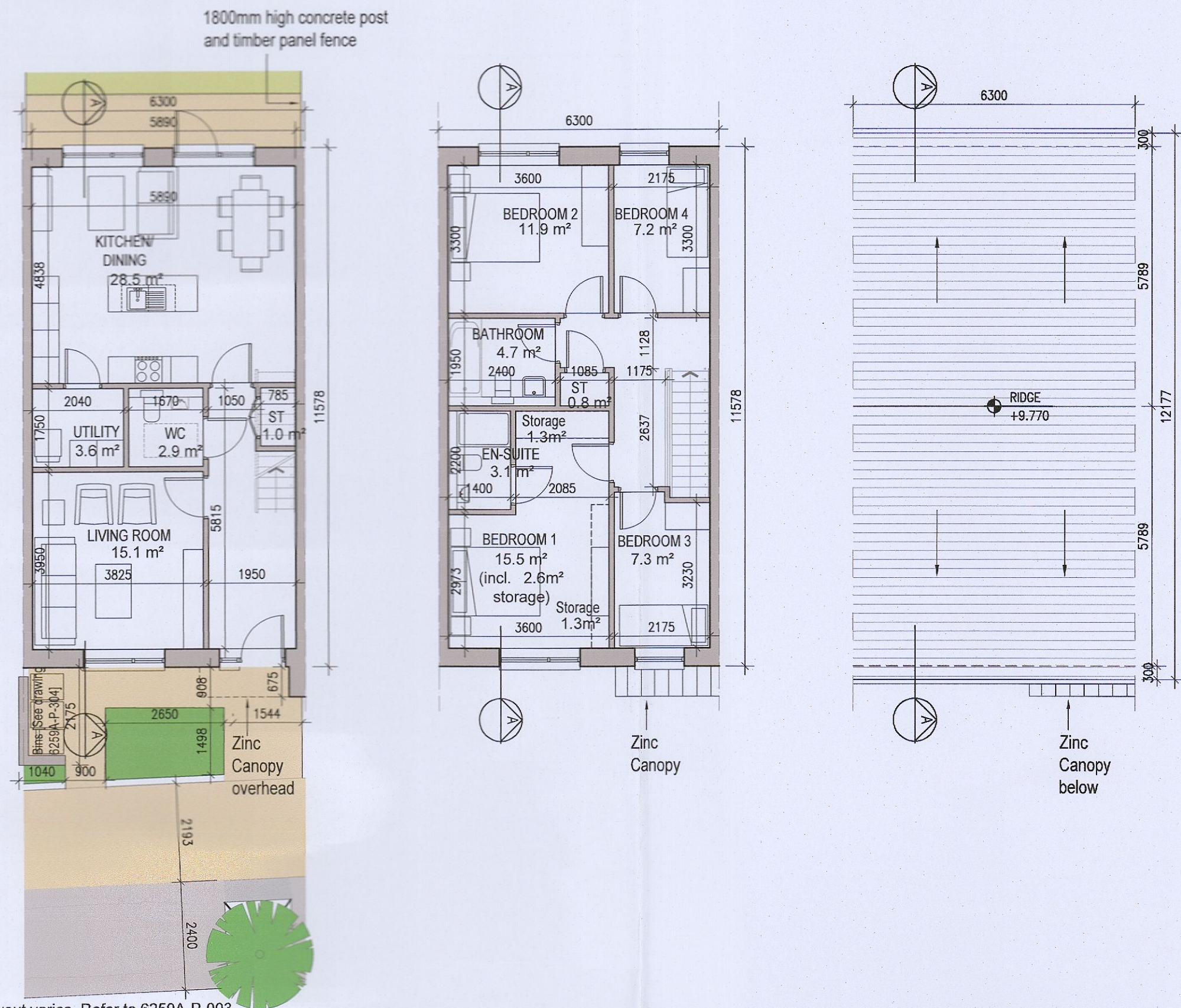


# HOUSE TYPE E1

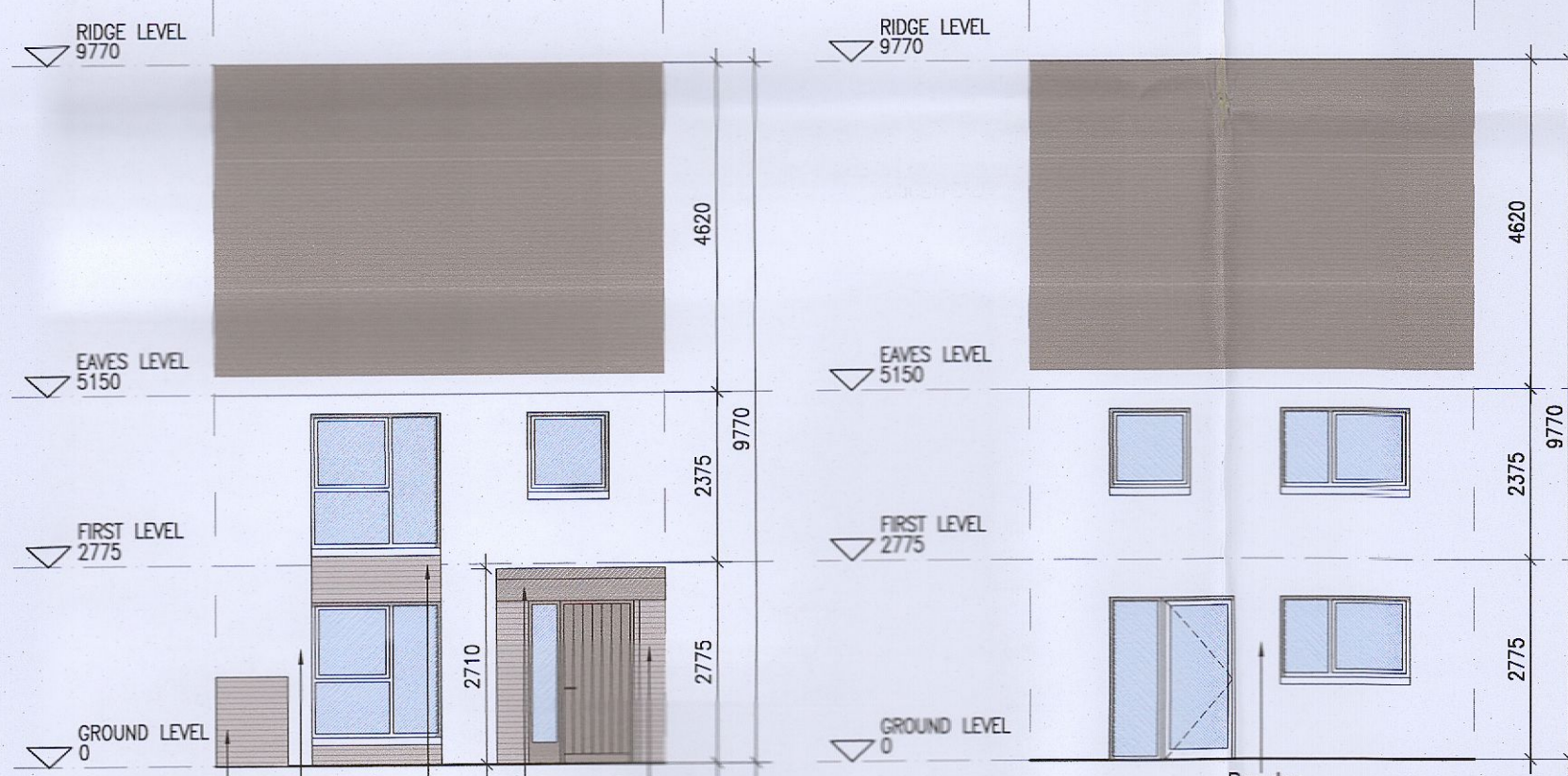


Parking layout varies. Refer to 6259A-P-003 & 6259A-P-010/011 for information

01 Ground Floor Plan

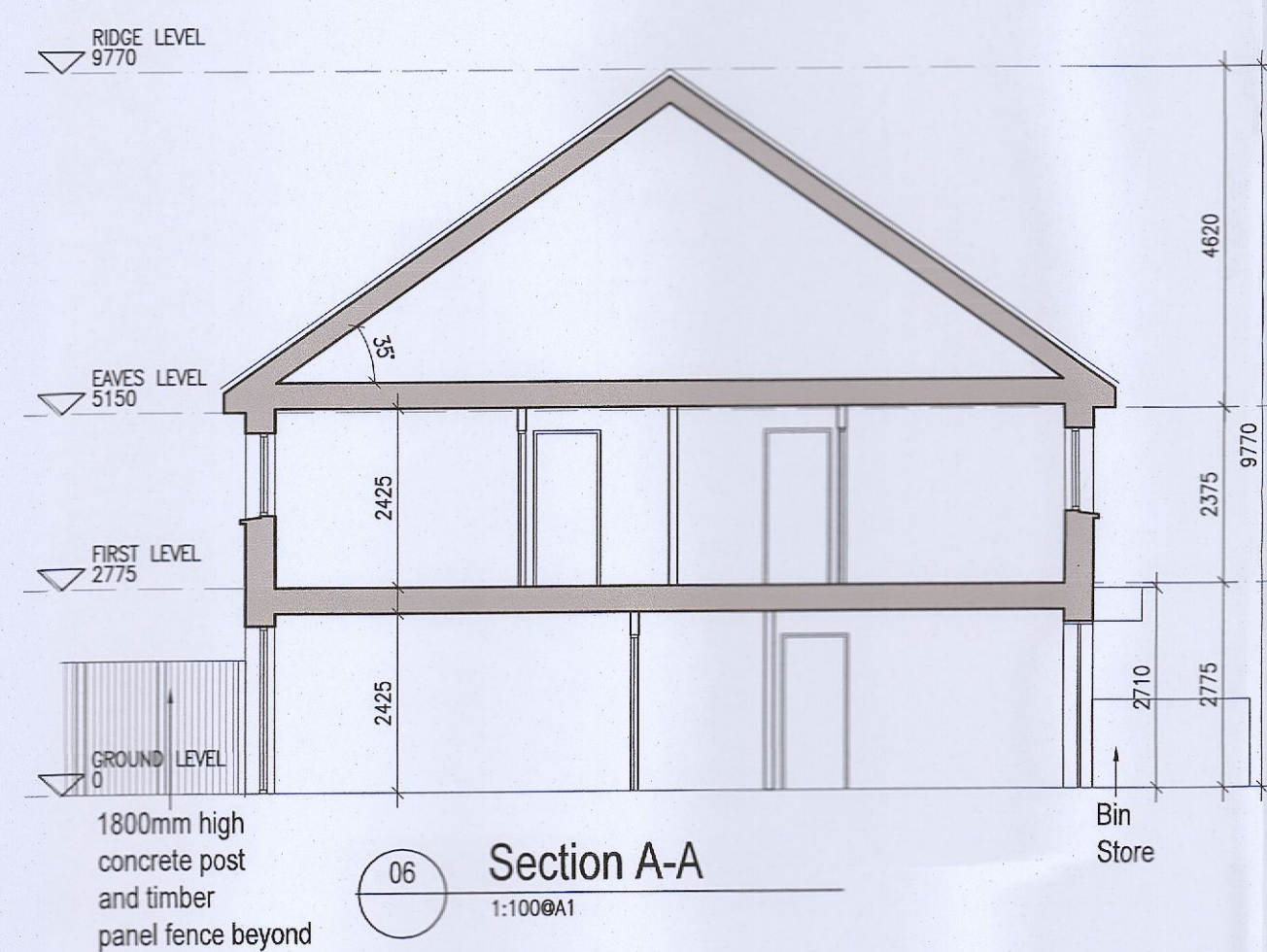
02 First Floor Plan

03 Roof Floor Plan  
1:100@A1



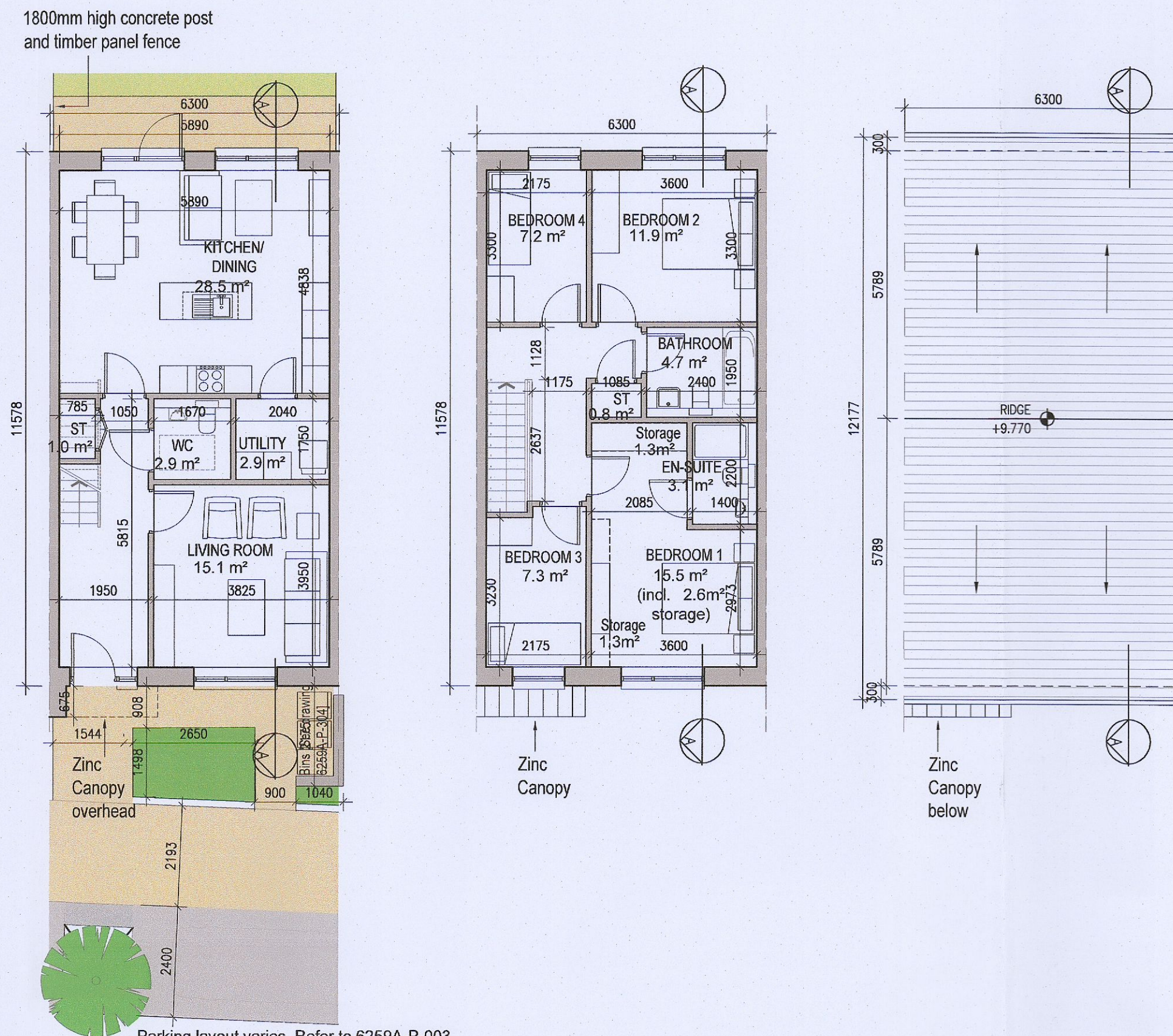
04 Front Elevation  
1:100@A1

05 Rear Elevation  
1:100@A1



06 Section A-A  
1:100@A1

# HOUSE TYPE E1 [HANDED]

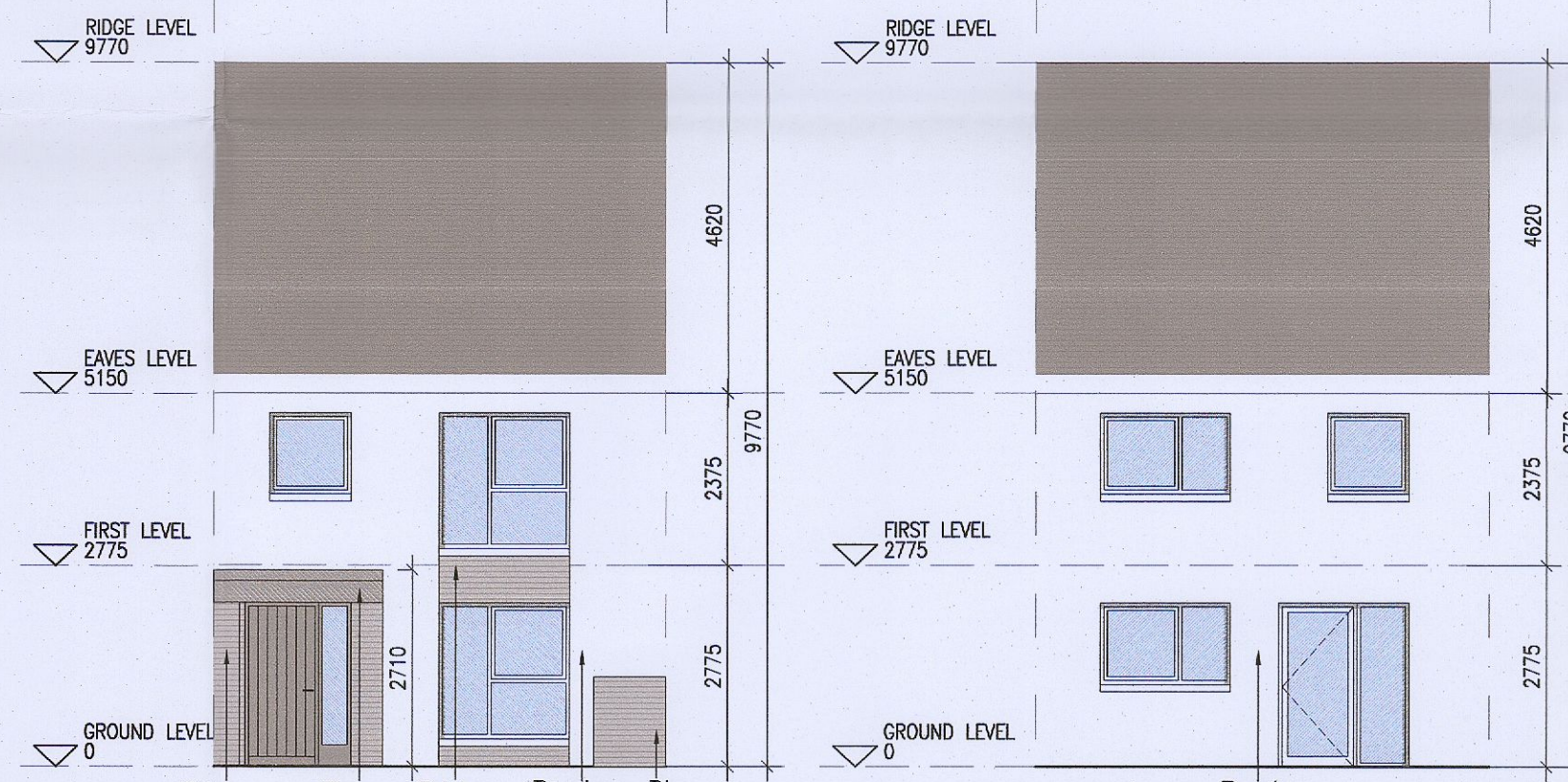


Parking layout varies. Refer to 6259A-P-003 & 6259A-P-010/011 for information

07 Ground Floor Plan  
1:100@A1

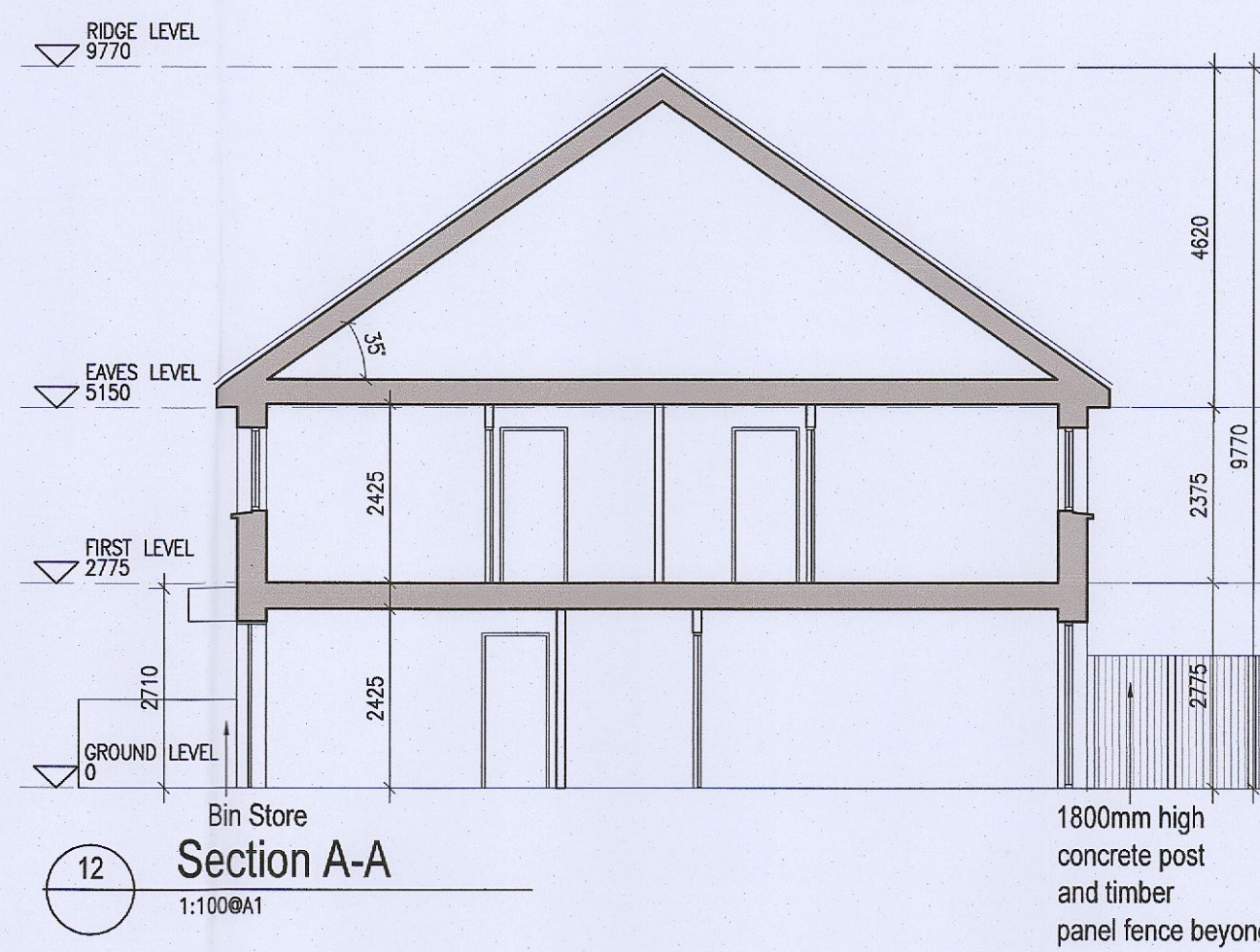
08 First Floor Plan  
1:100@A1

09 Roof Floor Plan  
1:100@A1

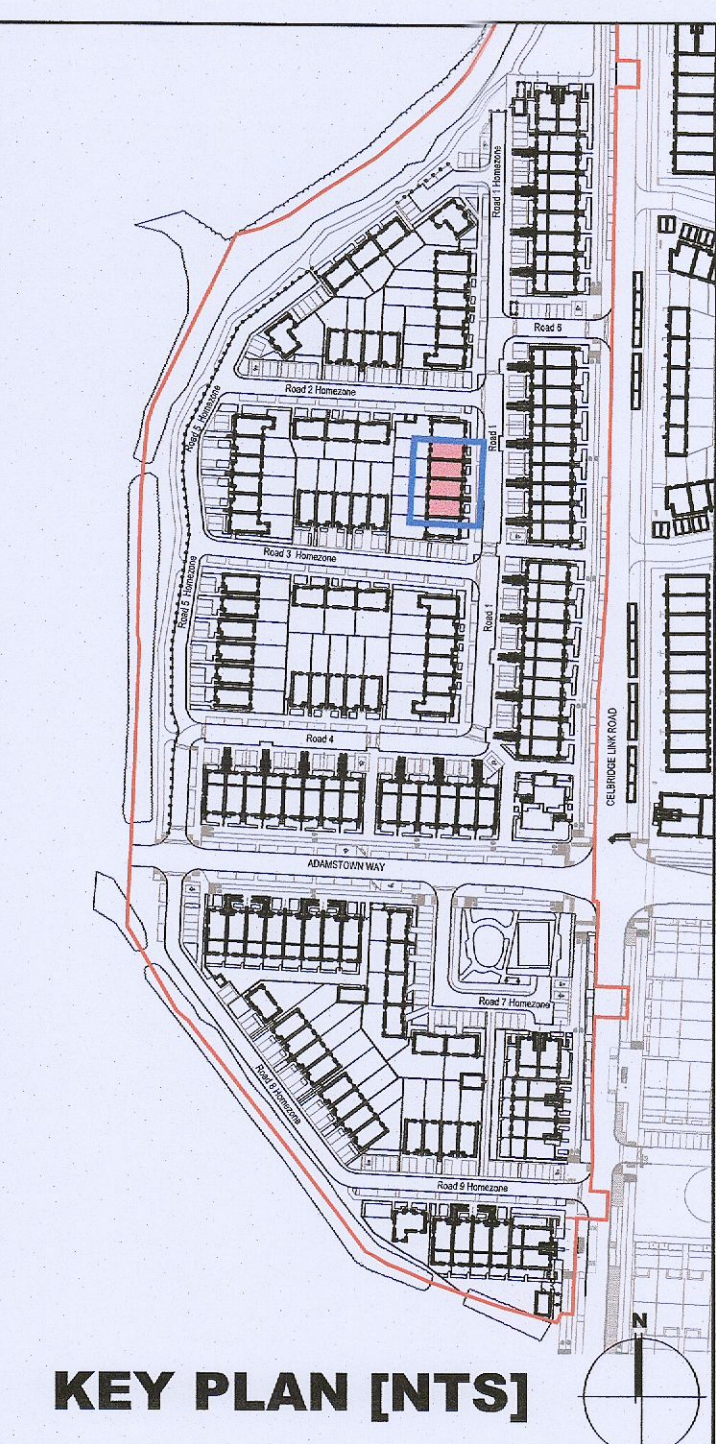


10 Front Elevation  
1:100@A1

11 Rear Elevation  
1:100@A1



12 Section A-A  
1:100@A1



KEY PLAN [NTS]

HOUSE TYPES	No. OF UNITS
Type A1/A2 - 3 bed	15
Type B1/B2 - 3 bed	28
Type C1/C2/C3/C4 - 3 bed	16
Type D - 4 bed	3
Type E1/E2 - 4 bed	7
Type K1/K2/K3 - 4 bed	6
	75

DUPLEX	No. OF UNITS
Type F1 - 2 bed	3
Type F2 - 2 bed	3
Type F3 - 2 bed	1
Type G1 - 2 bed	6
Type G2 - 2 bed	6
Type G3 - 2 bed	33
Type H1/H2 - 3 bed	33
Type J1 - 2 bed	2
Type J2 - 3 bed	2
Type J3 - 3 bed	7
Type J4 - 3 bed	2
Type J5 - 3 bed	2
Type J6 - 3 bed	9
Type J7 - 3 bed	9
Type J8 - 2 bed	3
Type J9 - 3 bed	3
	132
<b>TOTAL NO. OF UNITS</b>	<b>207</b>

## EXTERNAL FINISHES

**WALLS:** PAINTED SAND / CEMENT RENDER OR PROPRIETARY PRECOLOURED RENDER FINISH SELECTED BRICKWORK WHERE INDICATED ON DRAWINGS

**WINDOWS:** SELECTED PROPRIETARY DOUBLE / TRIPLE GLAZED WINDOW SYSTEM WITH FRAMES TO APPROVED COLOUR OBTAINED GLAZING TO BATHROOMS AND EN-SUITES.

**DOORS:** SELECTED PROPRIETARY DOORS AND GLAZED SIDE SCREENS TO APPROVED COLOUR.

**RAINWATER GOODS:** uPVC OR POWDER COATED METAL GUTTERS AND RAINWATER PIPES TO SELECTED COLOUR.

**MAIN ROOF:** CONCRETE ROOF TILES IN SELECTED COLOUR.

**LOW LEVEL PROJECTION:** ZINC CANOPY TO ENTRANCE OF UNITS

**OTHER ITEMS:** uPVC OR POWDER COATED METAL FASCIAS, SOFFITS AND BARGE BOARDS PAINTED MILDSTEEL RAILINGS AND BALUSTRADES

HOUSE TYPE E1	
Ground floor area	63.4m <sup>2</sup>
First floor area	63.4m <sup>2</sup>
<b>Total Floor Area (3-bed unit):</b>	<b>126.8m<sup>2</sup></b>

**REFER TO LANDSCAPE ARCHITECT'S DRAWINGS FOR ALL LANDSCAPING DETAILS INCLUDING BOUNDARY TREATMENTS**

## HOUSE TYPE E1

Notes	Issue Status
1. Copyright Reserved	Progress
2. Work to figured dimensions only. Do not scale drawing.	Planning Application
3. The contractor is responsible for checking all levels and dimensions on site and shall refer all discrepancies to the Architect	Fire Cert
4. Where appropriate, for details of i.e. structure, or mechanical and electrical details, see Engineers drawings	Disability Cert
5. Proprietary items shall be fixed in strict accordance with manufacturers instructions.	Tender
6. Sizes of proprietary items shall be checked with manufacturer.	Construction
7. The contractor shall be responsible for the coordination of structure, finishes and services.	As Built
	Information Only

No.	Date	Revision	Initials
01	14.10.2022	ISSUED FOR PLANNING	UF
02	16.03.2023	ISSUED FOR PLANNING RFI	ED

Project	Aderrig Phase 3, Adamstown SDZ Residential Development
Drawing Title	House Type E1 (mid terrace) Handed/Non-handed-Plans, Elevation, Section
Drawing No	6259A-P-114
Scale	1:100@A1
Rev	02
Drawn	IFJ, ED
Date	MAR 2023

6-7 HARCOURT TERRACE, DUBLIN 2, IRELAND  
 +353-1-618 2400 | +353-1-675 7385  
 www.bkd.ie  
**bkdarchitects**  
 BURKE-KENNEDY DOYLE