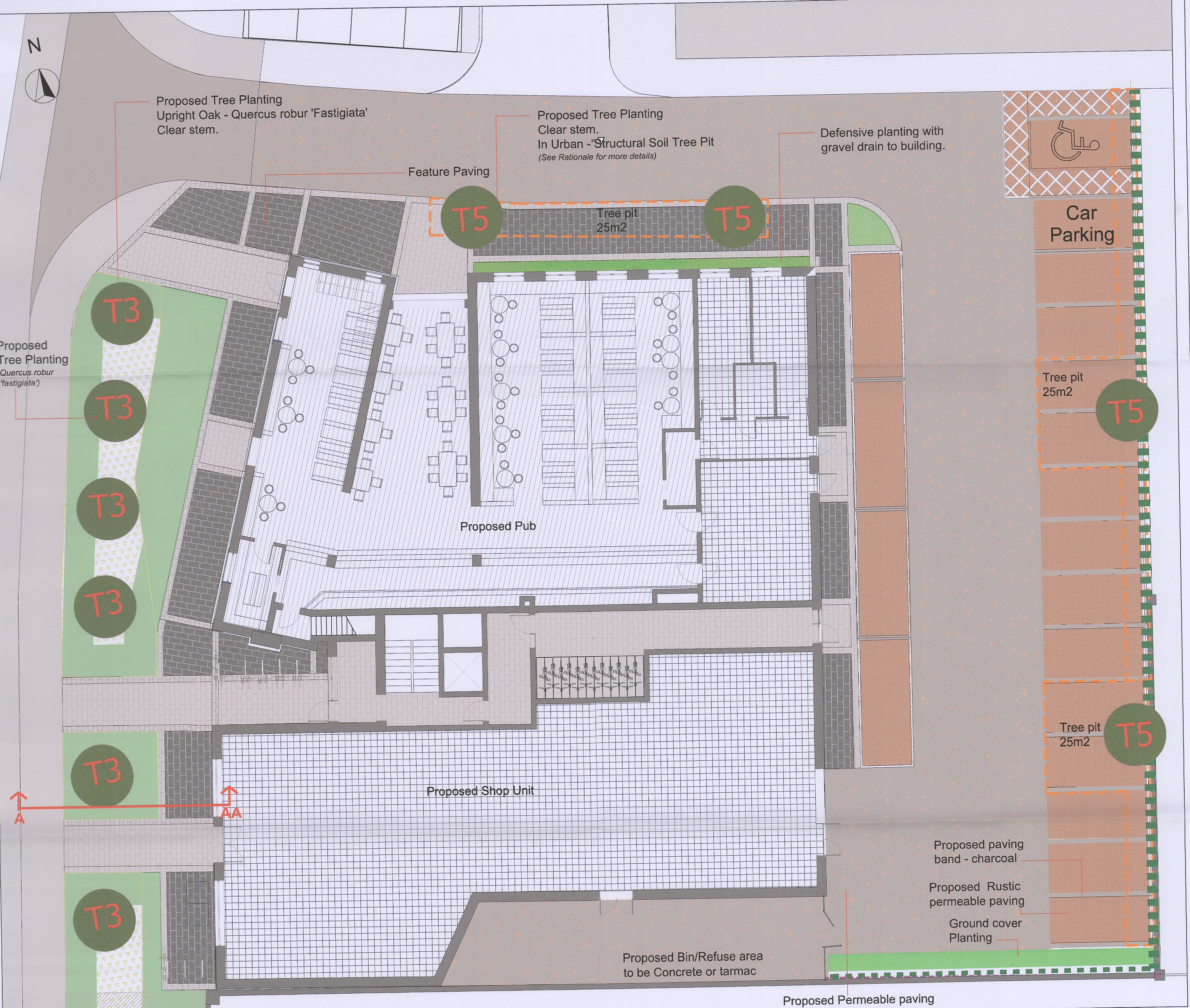
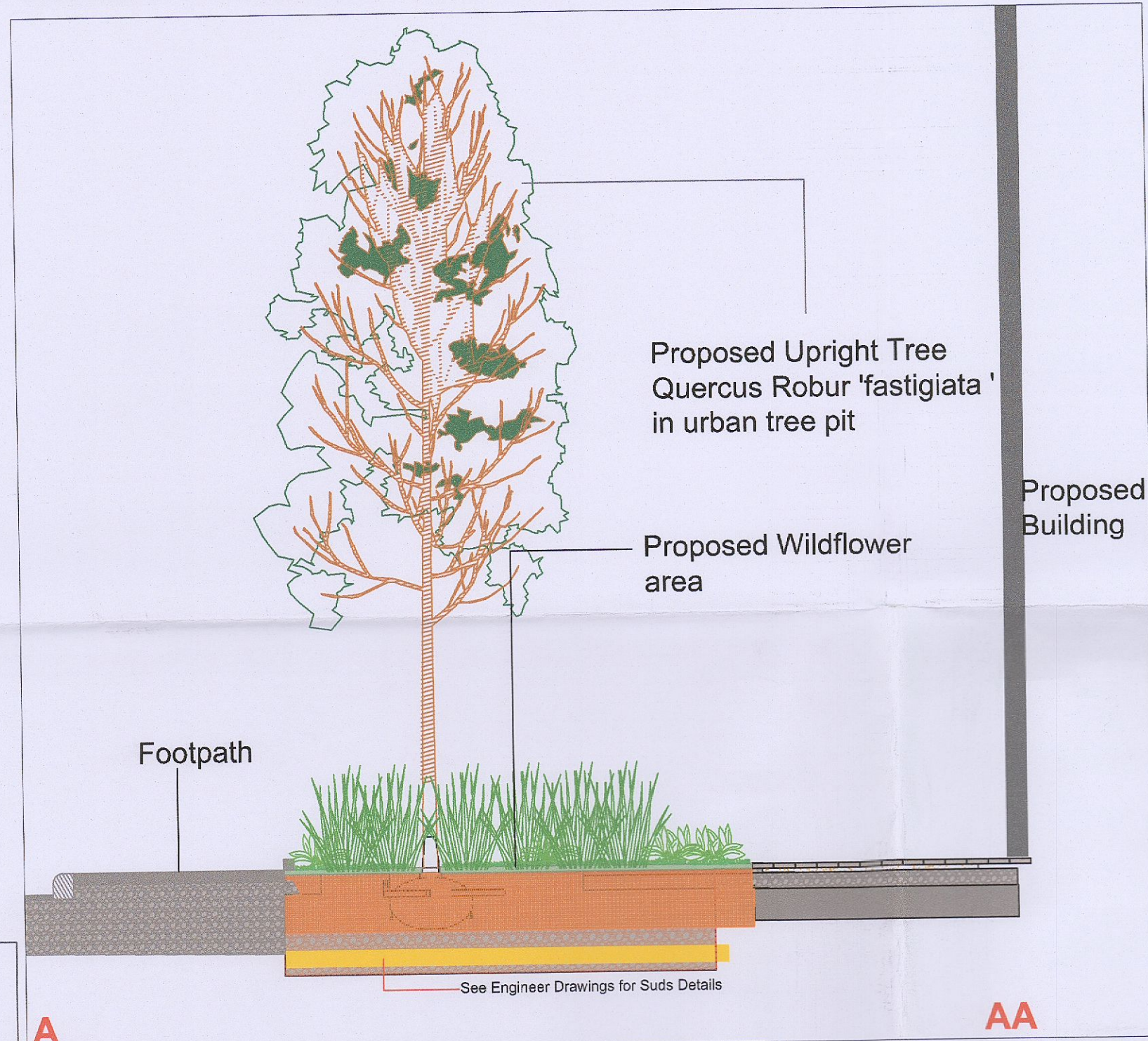


Landscape Masterplan - Ground floor Plan Scale (1:100 @A1)



Section A-AA Scale (1:100)



- Wildflower Meadow Mix Name.**
- Common knapweed - *Centaurea nigra*
 - Ribwort plantain - *Plantago lanceolata*
 - Red clover - *Trifolium pratense*
 - Bird's-foot trefoil - *Lotus corniculatus*
 - Bulbous buttercup - *Ranunculus bulbosus*
 - Meadow buttercup - *Ranunculus acris*
 - Lady's-bedstraw - *Galium verum*
 - Cowslip - *Primula veris*
 - Oxeye daisy - *Leucanthemum vulgare*
 - Yellow Rattle - *Rhinanthus minor*
 - Common sorrel *Rumex acetosa*
 - Burnet saxifrage - *Pimpinella saxifraga*
 - Autumn hawkbit - *Leontodon autumnalis*
 - Rough hawkbit - *Leontodon hispidus*

No.	Name	Size
T1	Acer palmatum 'Sango kaku'	120 cm-150cm
T2	Amelanchier grandiflora	150cm height r/b
T3	Quercus robor 'Fastigiata'	20-25cm
T4	Rhus typhina	150cm height r/b
T5	Betula pendula	14-16cm

LANDSCAPE TREATMENTS:

- Softlandscape**
 - Tree Planting (Please see list below)
 - Proposed Grass area
 - Proposed Wildflower Planting
 - Low Hedge Planting (Prunus 'Otto Luyken' or Sarcococca spp.)
 - Defensive Planting beds (Low to Ground cover planting)
 - S2 Persicaria affine - 7per m2
 - S4 Prunus 'Otto Luyken' - 4per m2
 - S5 Lavandula angustifolia - 4per m2
 - Intensive green roof Planting (Groundcover & medium size m2)
 - S1 Vinca minor - 5per m2
 - S3 Sedum spectabile - 5per m2
 - S6 Hypericum calycinum - 4per m2
 - S7 Miscanthus sinensis - 4per m2
 - Extensive green roof Planting (Sedum)
 - Climber Planting (Parthenocarpic tricuspidata On Rear boundary wall)

- Boundary Treatment 1 (Retain Existing Boundary)
- Boundary Treatment 2 (Timber Screens in Roof Terraces (To Architect spec))
- Boundary Treatment 3 (Screen wall to match with Existing part but wall)
- Boundary Treatment 4 (W/ Proposed Low hedge)
- Boundary Treatment 5 (450-500mm High Raised Planter see dwg 03 for details)
- Boundary Treatment 6 (1200mm High Metal Railing or similar approved)

HARDSCAPE TREATMENTS: or similar approved

- Surface finish 1 (Rimini / Florento Flag 600 x 600 mm)
- Surface finish 2 (Aqua Thomond 80mm (Charcoal grey) 240 x 160 x 80mm)
- Surface finish 3 (Aqua Thomond 80mm (Natural) 240 x 160 x 80mm)
- Surface finish 4 (Aqua Cobblest 80mm (Heather/Rustic) 200 x 100 x 80mm)
- Surface finish 5 (Tarmac hot rolled with coloured chipping or similar approved)
- Proposed Seating (Dinox 582 Roof terraces - integrated seat in raised planter)
- Proposed Tree grille (Metal with tree guard or similar approved)

REV:	DATE:	COMMENTS:	DRWN:	CHKD:
I	05/12	Update according to Drainage Plan	CW	RMD

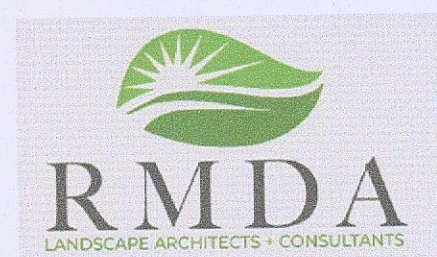
PROJECT: Proposed Mix Development at Cuckoo's Nest, Greenhills Road, Kilnamanagh, Dublin 24

DWG TITLE: Landscape Plan - Ground Floor.

Client: Brian Mulvaney

JOB NO: 1705 DATE: 07/06/2022 DRWN: JC APPR: RMD

DWG NO: 01 SCALE: 1:100 - Plan or as shown. REV: H



Ronan MacDiarmada + Associates Ltd. Landscape Architects and Consultants.

Tootenhill, Rathcoole, Co. Dublin
tel: +353 1 412 4476
mob: 086 26 25 438
e-mail: info@rmda.ie

This drawing is copyright (C)