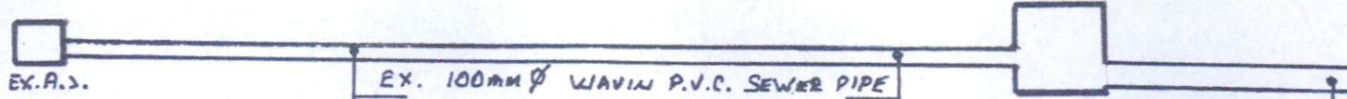


C.L. 0.00  
I.L. -0.30



**CROSS SECTION OF FOUL SEWER**

- Concrete Mixes  
 Lean Mix 7.5 N/mm<sup>2</sup>  
 Pipe Bedding 10.0 N/mm<sup>2</sup>  
 Blinding 10.0 N/mm<sup>2</sup>  
 Strip Foundation 15.0 N/mm<sup>2</sup>  
 Ground Floor 20.0 N/mm<sup>2</sup>  
 Paths 25.0 N/mm<sup>2</sup>

- Plumbing:  
 Wash basin - Trap 32mm. Seal 7  
 Sink / Bath - Trap 40mm. Seal 7  
 W.C. - Trap 75mm. Seal 5

- Drains:  
 100mm. and 150mm. diameter dra  
 bedded on 100mm granular materi  
 covered with 100mm granular fill +  
 200mm selected fill.

- DRAINAGE LEGEND**  
 Foul Sewer Drain - - - - -  
 Surface Water Drain - . . . . .  
 Gully Trap ○  
 Gull Trap R.W.P. □  
 Armstrong Junction ○  
 Manhole □

All work to comply with  
 Technical Guidance  
 Document B - Fire  
 Building Regulations 1991.

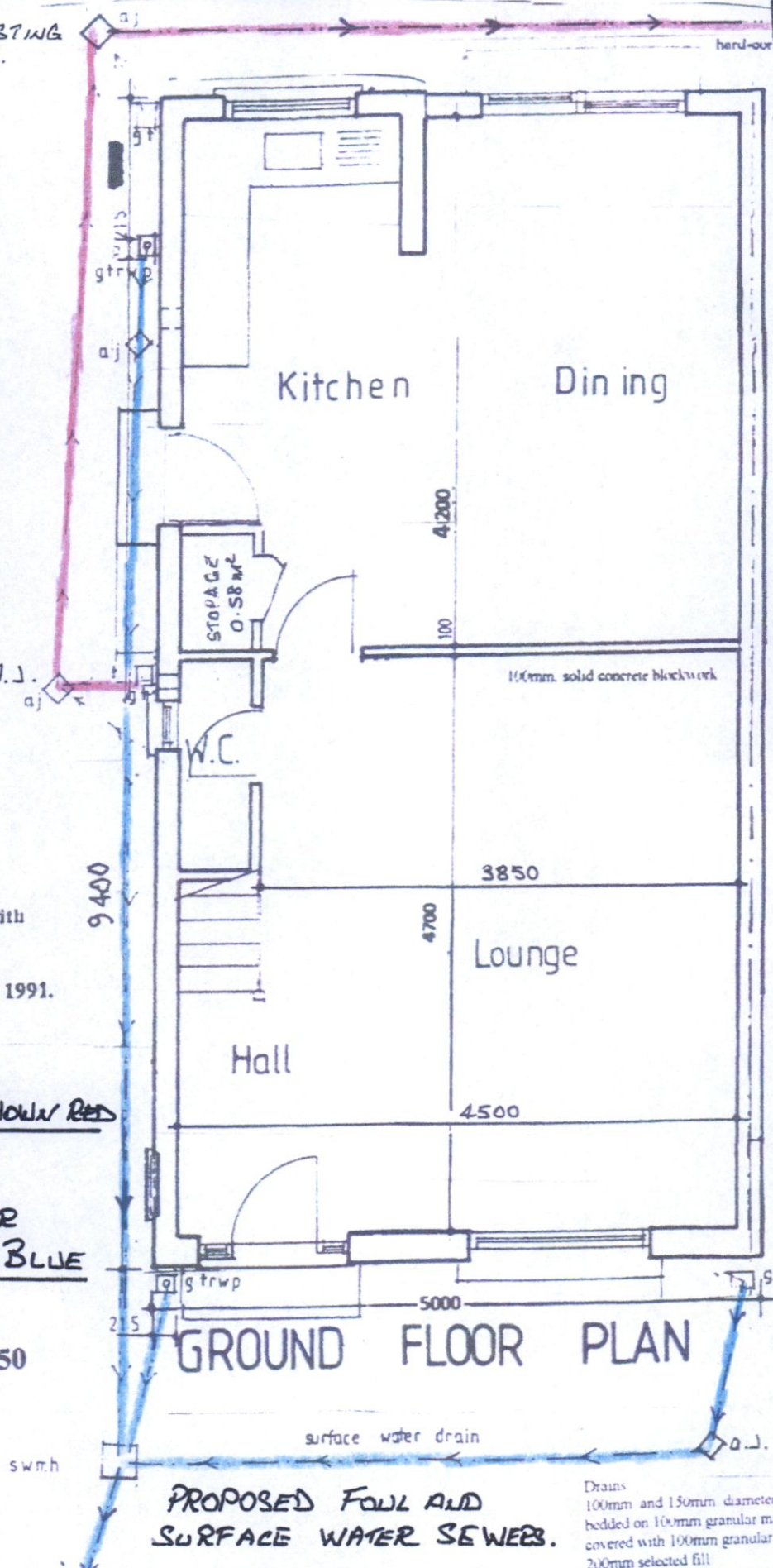
**FOUL SEWER SHOWN RED**

**SURFACE WATER  
 SEWER SHOWN BLUE**

Smoke Detector to be fixed to ceiling  
 bottom of stairs to B.S. 5588 Part

Scale: 1:50

**GROUND FLOOR PLAN**



**PROPOSED FOUL AND  
 SURFACE WATER SEWERS.**

- Drains:  
 100mm and 150mm diameter drains  
 bedded on 100mm granular material,  
 covered with 100mm granular fill and  
 200mm selected fill