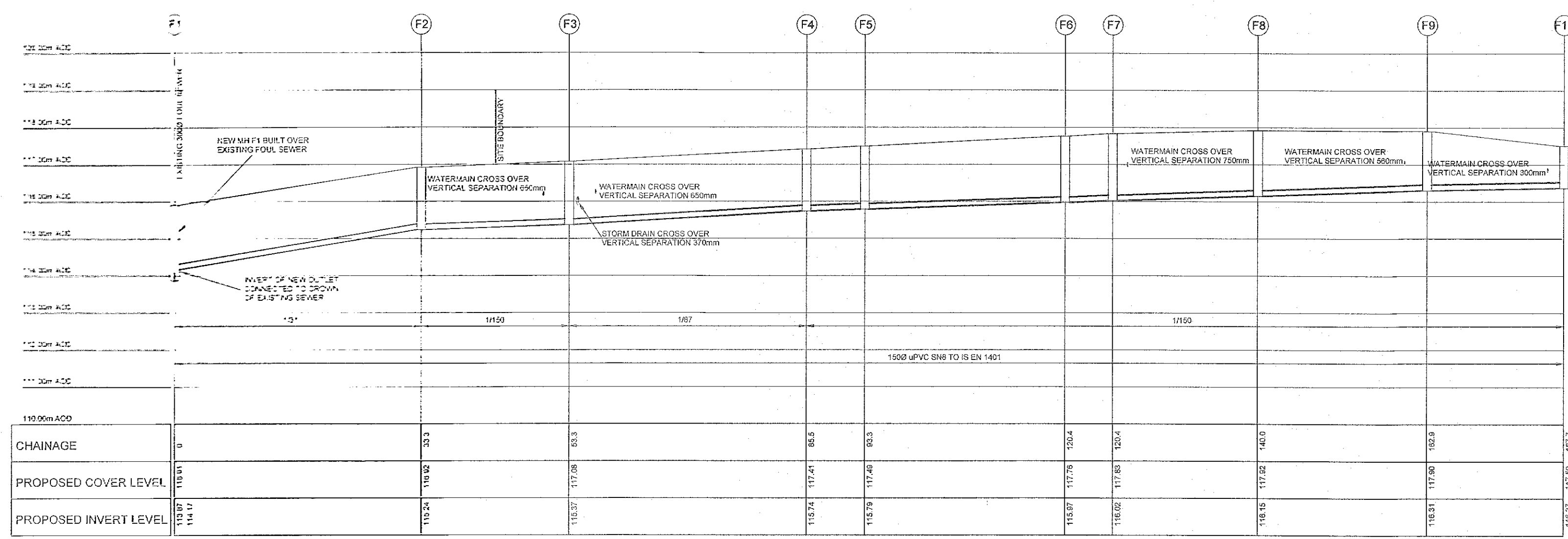
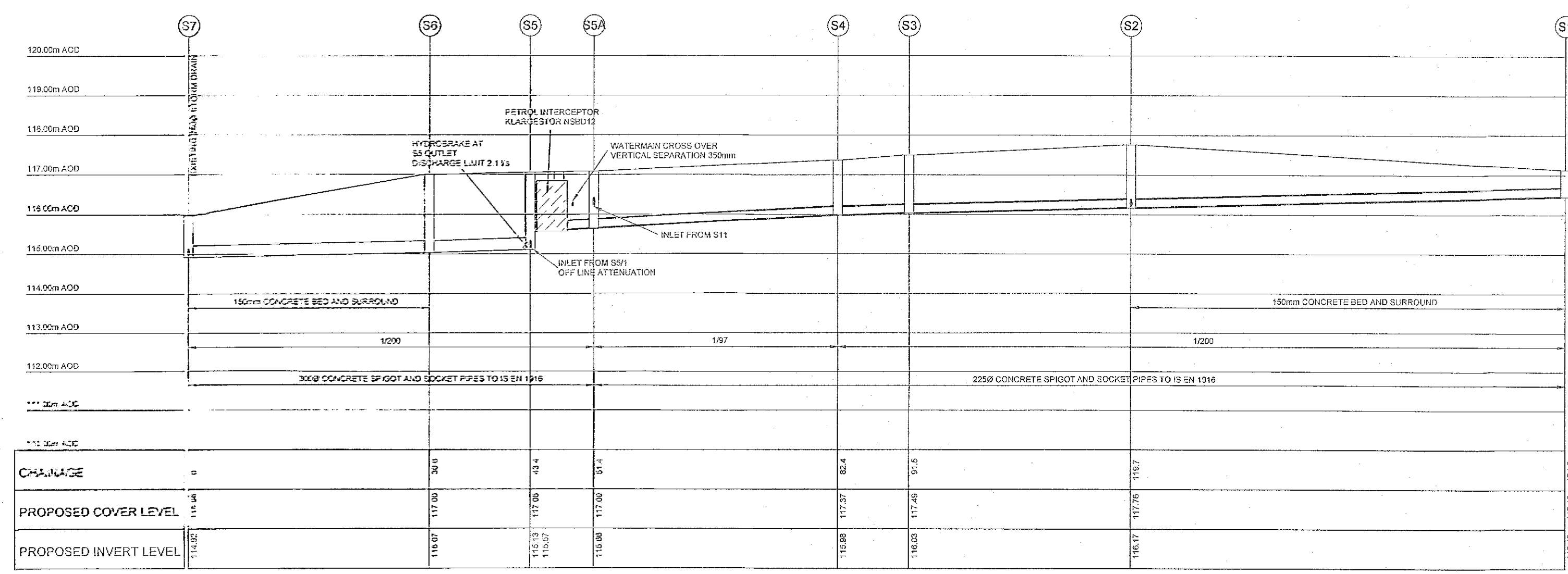


NOTES

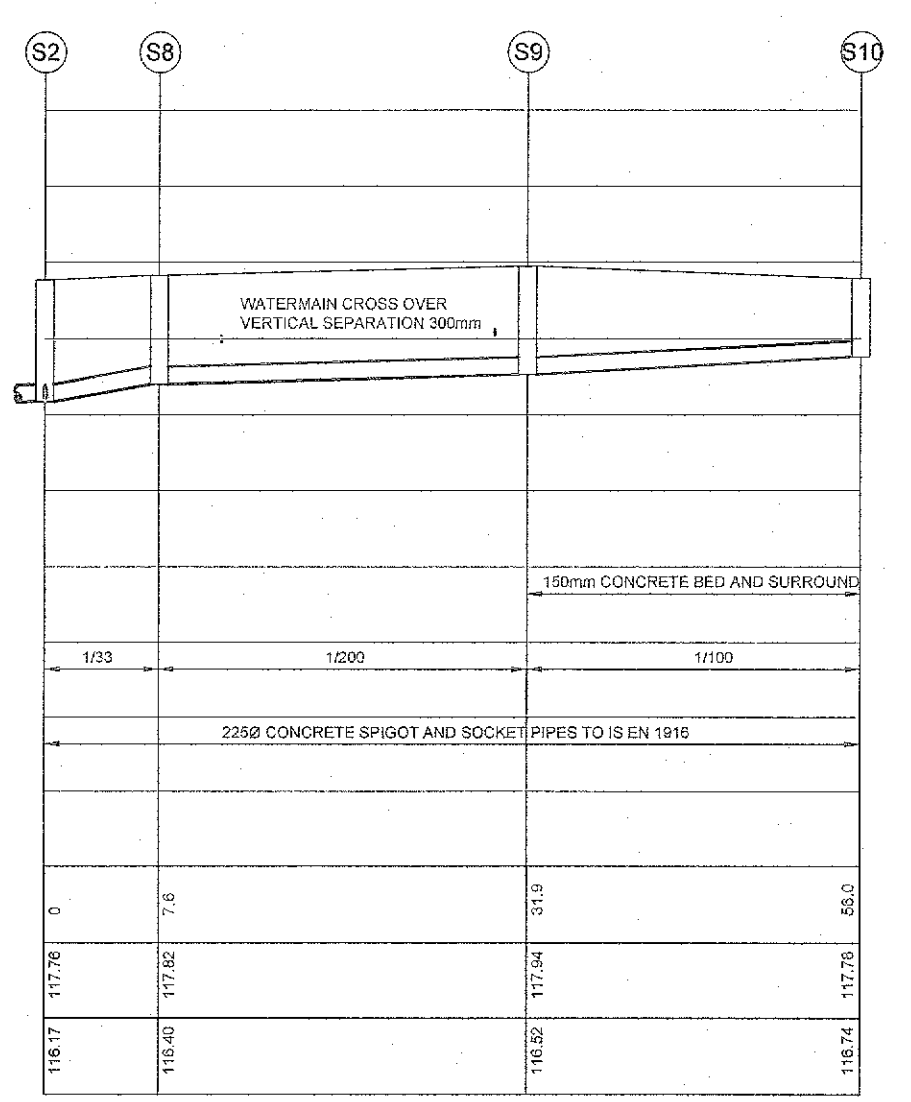
- MINIMUM DEPTH OF COVER FROM FINISHED SURFACE TO CROWN OF GRAVITY PIPES WITHOUT PROTECTION SHOULD BE AS FOLLOWS:
 - GARDENS AND PATHWAYS WITHOUT THE POSSIBILITY OF ACCESS DEPTH NOT LESS THAN 0.6m (OR PRIVATE PROPERTY) DEPTH OF THIS NATURE ARE UNDESIRABLE AND PIPES SHOULD BE INSTALLED IN ACCORDANCE WITH THE BUILDING REGULATIONS
 - DRIVEWAYS, PARKING AREAS NOT LESS THAN 0.75m, BUT PARKING AREAS ADJACENT TO ROADS AS PER 1.3 BELOW
 - PUBLIC ROADS DEPTH LESS THAN 1.2m
 - BACKFILL MATERIAL TO BE CLAUSE 808 IN ACCORDANCE WITH NIA SPECIFICATION FOR ROAD WORKS FOR PIPES LOCATED UNDER ROADS, FOOTPATHS OF WHERE THE NEAREST PART OF A TRENCH IS WITHIN 1m OF THE POWER EDGE OF A ROAD. MATERIAL TO BE COMPACTED AS PER CLAUSE 902 OF NIA SPECIFICATION FOR ROAD WORKS
 - SELECTED EXCAVATED MATERIAL MAY BE USED IN GREEN FIELD AREAS ABOVE GRANULAR PIPE SURROUND SUBJECT TO COMPLIANCE WITH ROSS WATER REQUIREMENTS
 - PIPE BEDDINGS SHALL COMPLY WITH WS 4-08-02 AND ION 4-08-01 GRANULAR MATERIAL SHALL BE 10 TO 14mm GRADED AGGREGATE OR 10mm SINGLE SIZE AGGREGATE TO IS EN 12526. CONCRETE BED, HAUNCH AND SURROUND WHERE REQUIRED SHALL BE STD-24/WRK
 - IN SOFT GROUND CONDITIONS ONLY, THE MATERIAL SHOULD BE EXCAVATED AND DISPOSED OF IN ACCORDANCE WITH THE WASTE MANAGEMENT ACT AND CLAUSE 808 MATERIAL IN ACCORDANCE WITH NIA SPECIFICATION FOR ROAD WORKS SHALL REPLACE THE EXCAVATED MATERIAL, WRAPPED IN GEOTEXTILE MATERIAL
 - PIPES SHALL NOT BE SUPPORTED ON STONES, ROCKS OR ANY HARD OBJECTS AT ANY POINT ALONG THE TRENCH. ROCKS SHALL BE EXCAVATED TO A DEPTH OF 150mm BELOW THE DEPTH OF THE PIPE AND FILLED WITH CLAUSE 808 MATERIAL
 - NON-DEGRADABLE MARKER TAPE SHOULD BE INSTALLED AT THE TOP OF ALL PIPES IN THE CASE OF NON-METAL PIPES, THE MARKER TAPE SHOULD INCORPORATE A TRUCK WIRE



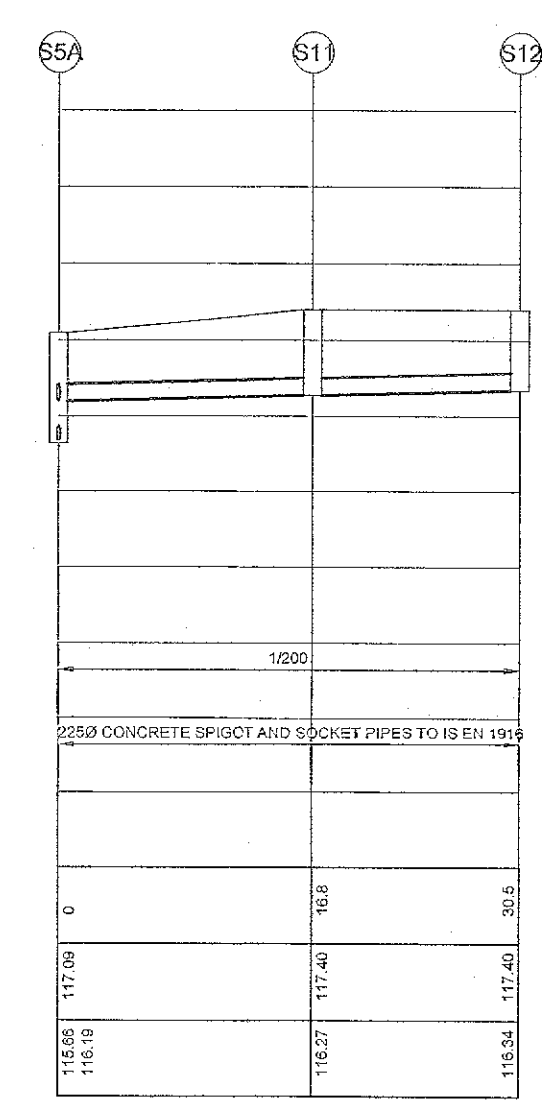
Foul Sewer Longitudinal Section F1 to F11 - 1:500



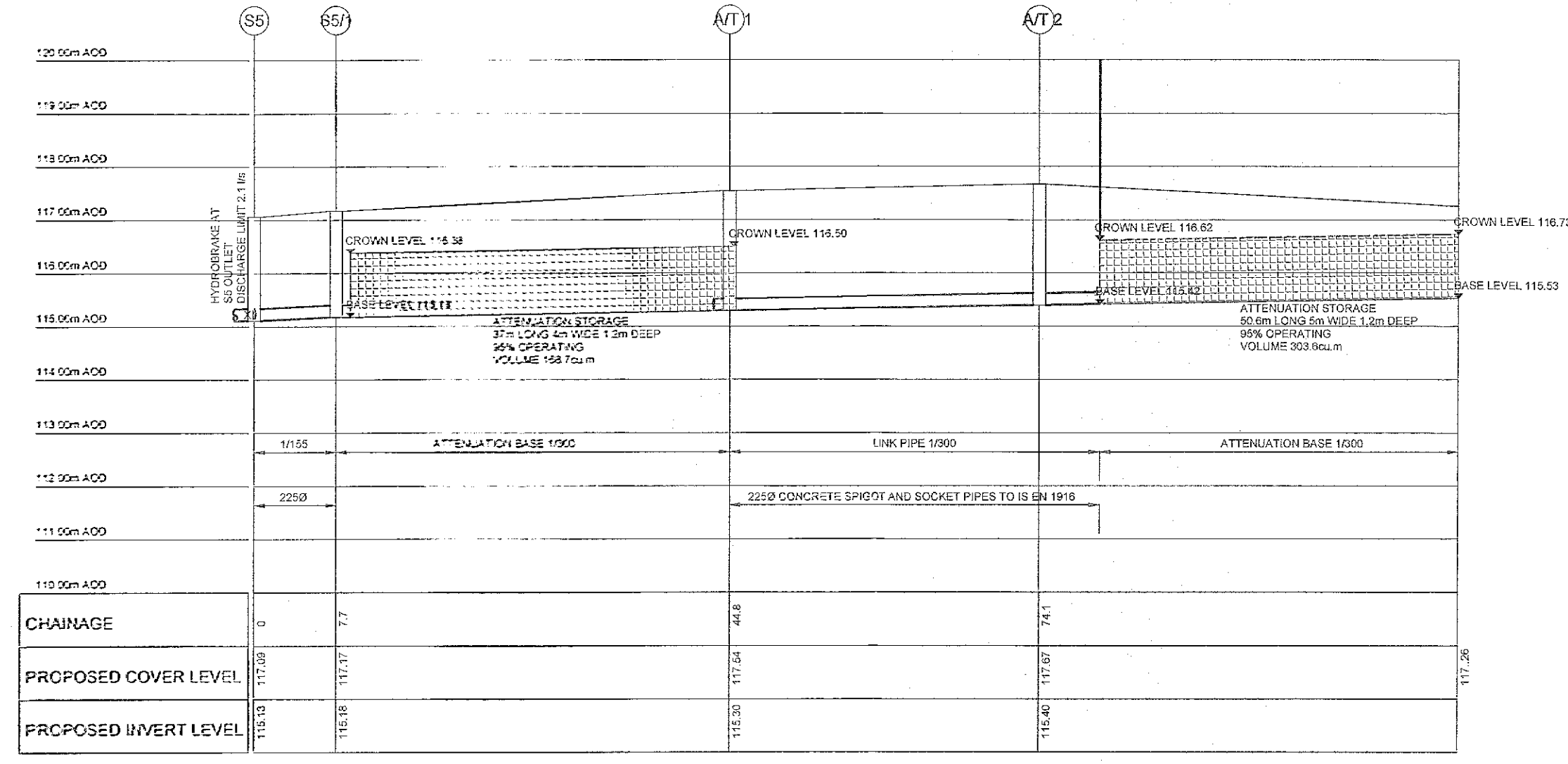
Storm Longitudinal Section S7 to S1



S2 to S10



S5A to S12



Longitudinal Section Attenuation Storage - 1:500

LONGITUDINAL DRAINAGE SECTIONS

No.	Date	Description	By	Chk
REVISIONS				
<div style="border: 1px solid black; padding: 5px;"> <p style="text-align: center;">E. D. P. M. Ltd</p> <p style="text-align: center;">Consulting Engineers, Designers & Project Managers</p> <p style="text-align: center;">7 Ormonde Road Kilkeny Phone 055 77 23707 Fax 055 77 58488 e-mail edpm@edpm.ie</p> </div>				
<p>PROJECT: PROPOSED DEVELOPMENT AT MAIN STREET RATHCOOLE FOR LORAT TRADING LTD</p>				
<p>TITLE: PROPOSED STORM DRAIN AND FOUL SEWER SECTIONS</p>				
STATUS: FURTHER INFORMATION		File Ref: 2021/21		
BY:	SCALE: A1 1:500	DATE: FEB 23	DWG No: FI-105	rev
CHK:			cad-	