

**LEGEND**  
Street furniture & Services

Over Head Wires (LUAS) - Pylon ESB	Bus Stop	Road Sign	Phone Box
Flowerbed	Ballast	Bus Stop	Bench Seat
Pipe	Beacon	Bus Stop	Gas Cover
Lift	Beacon	Bus Stop	Gas Cover
Barrier	Beacon	Bus Stop	Gas Cover
Pump	Beacon	Bus Stop	Gas Cover
Trials Pit	Beacon	Bus Stop	Gas Cover
Bus/Tram Shelter	Beacon	Bus Stop	Gas Cover
Water - General	Beacon	Bus Stop	Gas Cover
Water Valve	Beacon	Bus Stop	Gas Cover
Gas Valve	Beacon	Bus Stop	Gas Cover
Sluice Valve	Beacon	Bus Stop	Gas Cover
Air Valve	Beacon	Bus Stop	Gas Cover
Stop Cook	Beacon	Bus Stop	Gas Cover
C/P Post	Beacon	Bus Stop	Gas Cover
Marker Post	Beacon	Bus Stop	Gas Cover
Tracing Light	Beacon	Bus Stop	Gas Cover
Parking Meter	Beacon	Bus Stop	Gas Cover
Flare Area Mark	Beacon	Bus Stop	Gas Cover
Smart Card Validator	Beacon	Bus Stop	Gas Cover
Unknown Valve	Beacon	Bus Stop	Gas Cover
Water Level	Water Level	Water Level	Water Level
Crown Level	Crown Level	Crown Level	Crown Level
Invert Level	Invert Level	Invert Level	Invert Level
Bed Level	Bed Level	Bed Level	Bed Level
Spotheight	Spotheight	Spotheight	Spotheight
Water Level	Water Level	Water Level	Water Level
Crown Level	Crown Level	Crown Level	Crown Level
Invert Level	Invert Level	Invert Level	Invert Level
Bed Level	Bed Level	Bed Level	Bed Level
Spotheight	Spotheight	Spotheight	Spotheight
Water Level	Water Level	Water Level	Water Level
Crown Level	Crown Level	Crown Level	Crown Level
Invert Level	Invert Level	Invert Level	Invert Level
Bed Level	Bed Level	Bed Level	Bed Level
Spotheight	Spotheight	Spotheight	Spotheight

**Natural Features**

**Built Features**

**Roads & Road Markings**

Murphy Surveys Ltd. Disclaimer

The user or recipient of this survey data understands and acknowledges this data may be inaccurate or contain errors or omissions and the user or recipient assumes full responsibility for any risks or damages resulting from, arising from, or in connection with any use of or reliance upon data displayed herein. Although significant care has been exercised to produce surveys that satisfy survey accuracy standards, these surveys are only as accurate as the source data from which they were compiled. Although all reasonable steps have been taken to locate all features visible at the time of the survey, there is no guarantee that all will be shown on the drawing, as some above ground features may have obstructed the survey. Wherever possible, areas unable to be surveyed will be labelled as "UTS".

The Company shall not be liable for any inaccuracy of the data provided beyond the specified scale or accuracy, or for any matters resulting from their use for purposes other than that stated in the Contract. No liability shall attach to the Surveyor in respect of any consequential loss or damages suffered by the Client.

The Client must promptly notify the Company of any errors in mapping of which it becomes aware. If misleading, inaccurate or otherwise inappropriate information is brought to the Company's attention or the Company itself identifies any such inaccuracy or error in a survey, it shall use its reasonable endeavours to fix or remove it and if necessary in certain instances, the Company being on notice of any such misleading, inaccurate or otherwise inappropriate information, it will re-conduct the survey and reproduce the data to within the specified scale or accuracy.

Map Sheet Layout

Drawn by: HM	Date: 24.06.2020	Datum: Main Head
Checked by: CDR	Date: 16.03.2022	Grid System: Irish National Grid
Checked by: PK	Date: 16.03.2022	Irish National Grid: ITM19D

No	Date	Description
0	08.2020	Field Drawing
1	16.03.2022	Details added, Elevations added
2	11.11.2022	Signage Foundation Update
3	29.11.2022	Color Illumination & Layout Update
4	03.02.2023	Removal of 2 omitted signs to front panel

**SOCIETY OF CHARTERED SURVEYORS IRELAND**

**EUROPEAN GPR ASSOCIATION**

**RICS**

**THE SURVEY ASSOCIATION**

**Murphy GEOSPATIAL**

Topographic surveys, Measured Building Surveys, Setting Out, Drone Surveys, Hydrographic Surveys, Legal Mapping, Pipeline Surveys, Services Location, Ground Penetrating Radar, Construction Monitoring, Remote Sensing, Aerial Photography

Kildare Cork Dublin Belfast Glasgow Manchester London

**Head Office**  
Global House  
Kilcullen Business Campus  
Kilcullen Co. Kildare  
Ireland

Phone: (+353) 045 484040  
Fax: (+353) 045 484004  
Email: info@murphysurveys.ie

**Client:** BOC Gases Ireland

**Project:** BOC Gases Ireland at Unit 10 JFK Drive

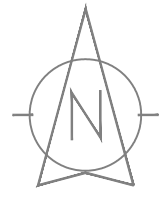
**Date:** 16.03.2022 **Scale:** As shown@A1

**Description:** Proposed Elevations

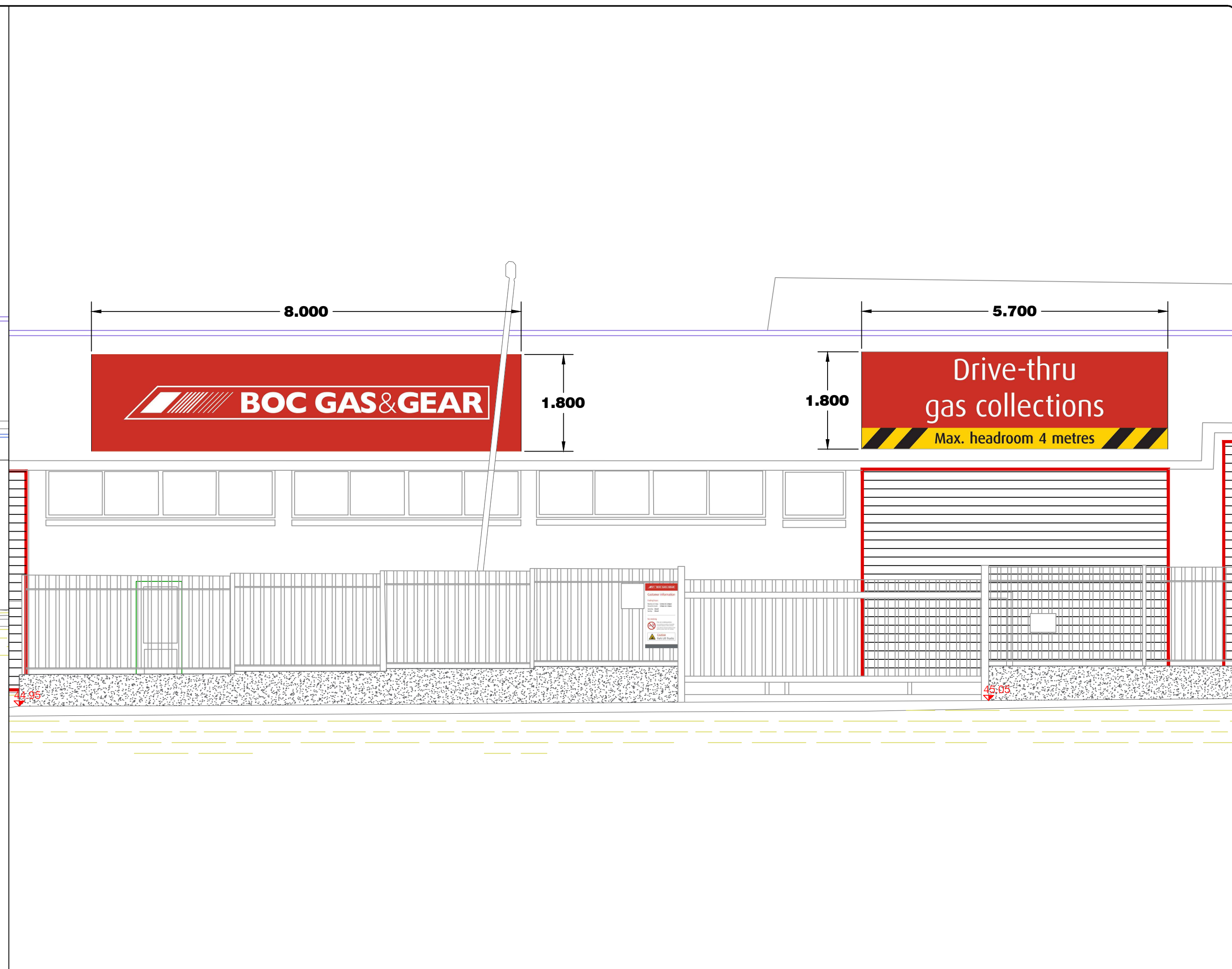
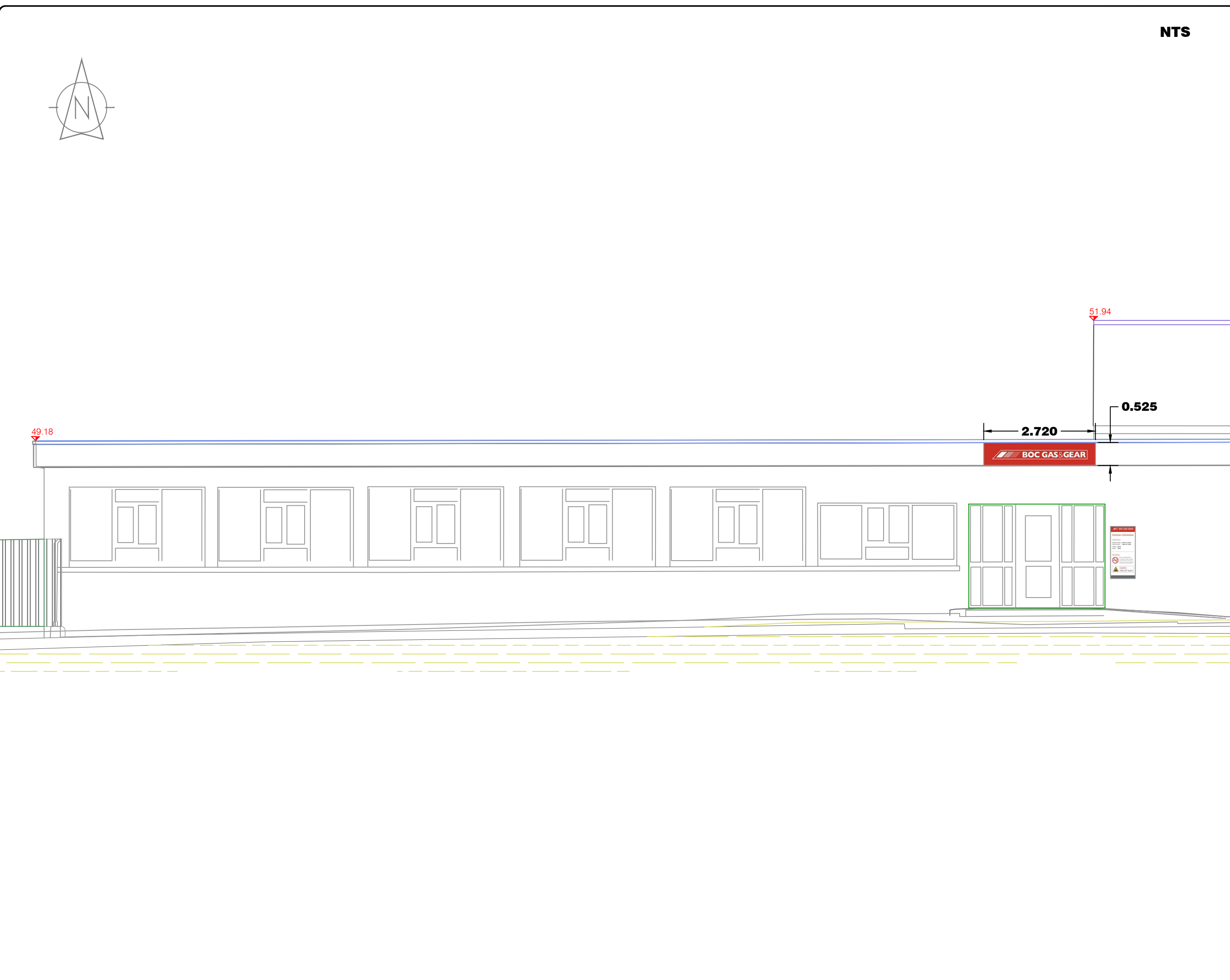
**Drawing Number:** MGS39042\_EL\_Rev4\_1

Copyright 2022 MURPHY GEOSPATIAL LTD





NTS



**LEGEND**  
Street furniture & Services

Over Head Wire (LUAS) - Pylon ESB	Bus Stop	Road Sign	Phone Box
Flowerbed	Bollard	Keek	Dust
Pipe	Beacon	Gully	Gas Cover
Light	Coastline Cover	Waste Bin	P-Box
Barrier	Bore Hole	Waste Bin	US Car Park Vent
Pump	Electricity Pole	Hydrant	Fire Hydrant
Manhole	Telegraph pole	Fire Hydrant	Fire Hydrant
Manhole	OCIS Pole	ESB Box	ESB Box
Manhole	CCTV Camera Pole	ESB Inspection Cover	ESB Inspection Cover
Manhole	Lamp Post	Traffic Control Box	Traffic Control Box
Manhole	Four Manhole	LUAS Technical Cabinet	LUAS Technical Cabinet
Manhole	Surface Water MH	Ticket Vending Machine	Ticket Vending Machine
Manhole	Manholes	Water Meter Cover	Water Meter Cover
Manhole	Air Conditioning Vents	Telecom Inspection Cover	Telecom Inspection Cover
Manhole	Services Inspection Cover	Monument / Toilets	Monument / Toilets
Manhole	Traffic Inspection Cover	Tank Storage	Tank Storage
Manhole	Cable TV Inspection Cover	Basement MH Cover & Pipe	Basement MH Cover & Pipe
Manhole	ESAT Inspection Cover	Delayed aerial Mark	Delayed aerial Mark
Manhole	NTL Inspection Cover	Stay for pole	Stay for pole
Manhole	Elcom Inspection Cover	PP	Pipe Protection
Manhole	Spotlight	Washout	Washout
Manhole	Spotlight	Washout	Washout

**Natural Features**

Surface Change	Water Level	Golf
Land Drain	Crown Level	Fair Way
Bottom of Slope	Invert level	Green
Top of Slope	Bed Level	Tea Box
Ditch	Spotlight	Other
Water Edge / Lake / Pond	Spotlight	Survey Station
Hedge / Trees Drip Line / Vegetation	Spotlight	Photo point
Tree Coniferous	Tree Deciduous	Top of Tree

**Built Features**  
Roads & Road Markings

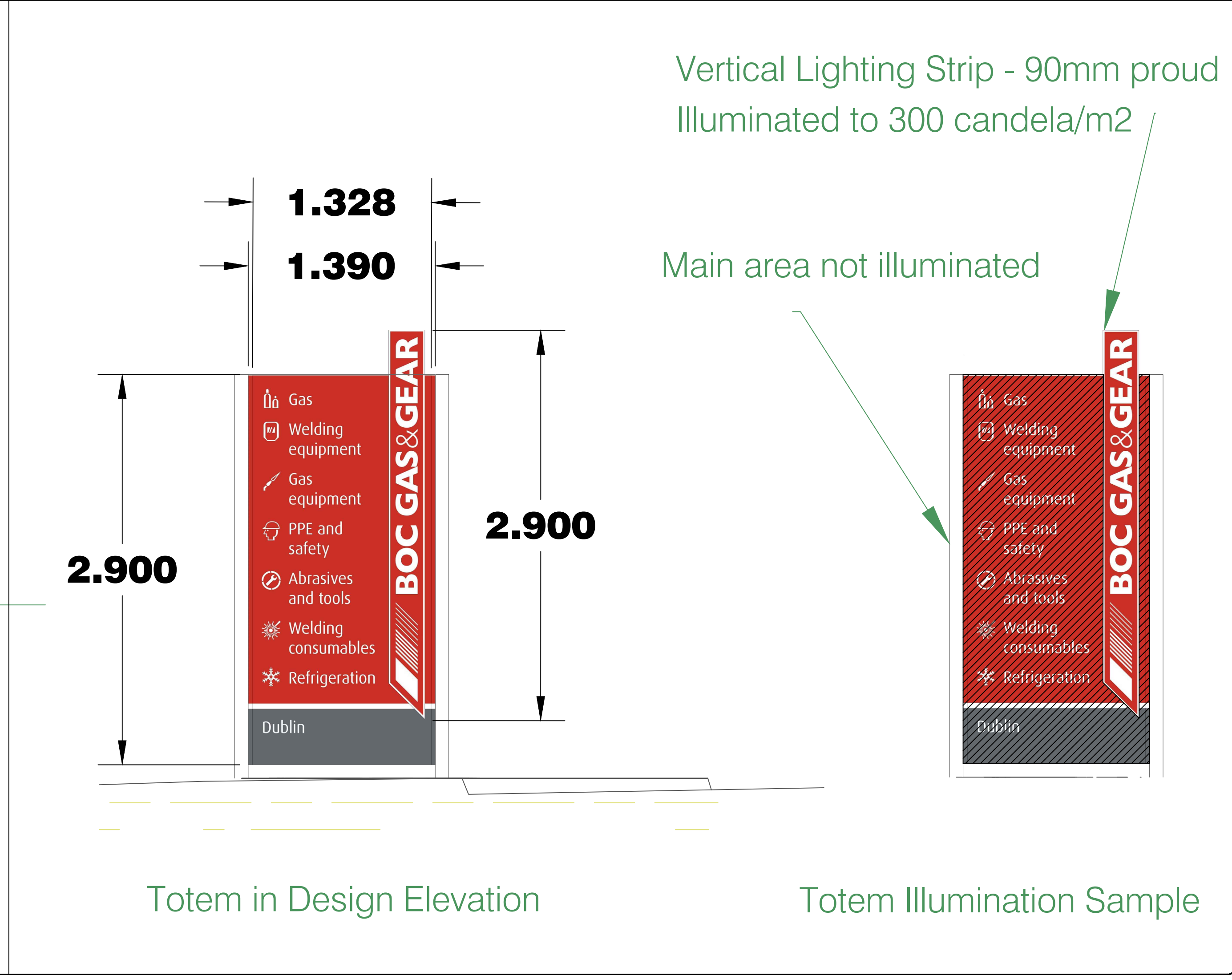
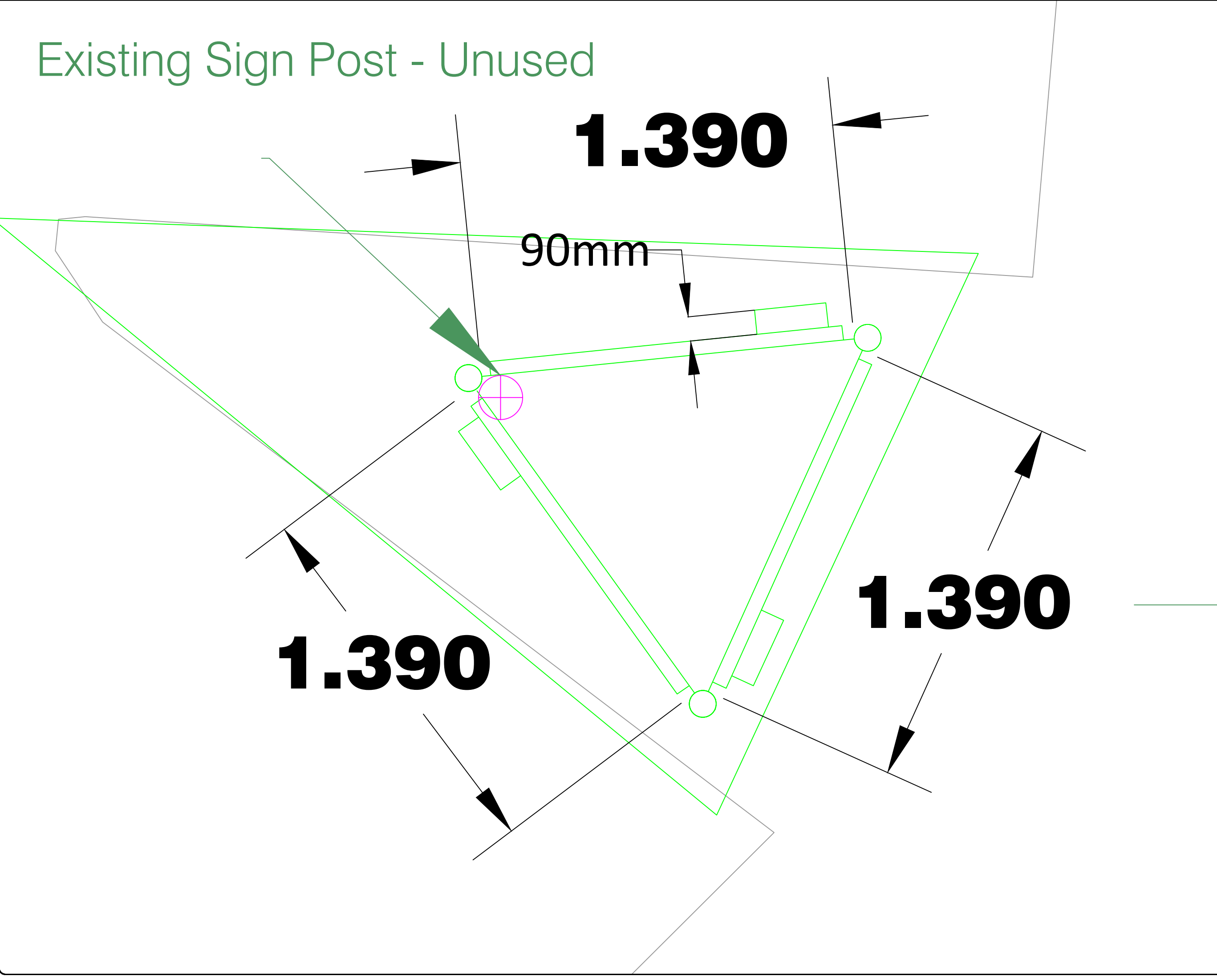
Building	Fence	Floor Level
Edge of Road	Gate	Apex Height
Kerb Bottom	Road Centreline	Eaves Height
Kerb Top	Top of Wall	Parapet Height
Bridge Abutment	Hoarding	Softly Elevation
Bridge Deck	Property Line	Softly Elevation
Bridge Pier	Road Board	Concrete Pad
Building Facade	Top of Fence	Track
Footpath / Platform / Tram	Wall / Retaining Wall	Wall / Retaining Wall
Damp Proof Course / Verge	Railway / Tram Rail / Gating / Ramp	Railway / Tram Rail / Gating / Ramp
Bridge Pier / Wall & Gate Pillar / LUAS Trackbed	Building Canopy / Roof / Overhang	Building Canopy / Roof / Overhang
Cycleway / Private Landing Area		

Murphy Surveys Ltd. Disclaimer

The user or recipient of this survey data understands and acknowledges this data may be inaccurate or contain errors or omissions and the user or recipient assumes full responsibility for any risks or damages resulting from arising from, or in connection with any use of or reliance upon data displayed herein. Although significant care has been exercised to produce surveys that satisfy survey accuracy standards, these surveys are only as accurate as the source data from which they were compiled. Although all reasonable steps have been taken to locate all features visible at the time of the survey, there is no guarantee that all will be shown on the drawing, as some above ground features may have obstructed the survey. Wherever possible, areas unable to be surveyed will be labelled as "UTS".

The Company shall not be liable for any inaccuracy of the data provided beyond the specified scale or accuracy, or for any matters resulting from their use for purposes other than that stated in the Contract. No liability shall attach to the Surveyor in respect of any consequential loss or damages suffered by the Client.

The Client must promptly notify the Company of any errors in mapping of which it becomes aware. If misleading, inaccurate or otherwise inappropriate information is brought to the Company's attention or the Company itself identifies any such impression or error in a survey, it shall use its reasonable endeavours to fix or remove it and if necessary in certain instances, the Company being on notice of any such misleading, inaccurate or otherwise inappropriate information, it will re-conduct the survey and reproduce the data to within the specified scale or accuracy.



Map Sheet Layout

Surveyed by: HM Date: 24.06.2020 Datum: Main Head  
 Drawn by: CSR Date: 16.03.2022 Grid System: Irish National Grid  
 Checked by: PK Date: 16.03.2022

No.	Date	Description	Revisions
0	08.2020	Final Drawing	
1	16.03.2022	Details added, Elevations added	
2	11.11.2022	Original Foundation Update	
3	29.11.2022	Color Illumination & Layout Update	
4	03.02.2023	Removal of 2 omitted signs to front panel	

**SOCIETY OF CHARTERED SURVEYORS IRELAND**  
**EUROPEAN GPR ASSOCIATION**  
**RICS**  
**THE SURVEY ASSOCIATION**

**Murphy GEOSPATIAL**  
 Topographic surveys, Measured Building Surveys, Building Information Modelling, Photogrammetry, Drone Mapping, Pipeline Surveys, Services Location, Ground Penetrating Radar, Utility Surveys, Scanning, Remote Sensing, Aerial Photography

Kildare Cork Dublin Belfast Glasgow Manchester London

**Head Office**  
 Global House  
 Kilcullen Business Campus  
 Kildare Co. Kildare  
 Ireland

Phone: (+353) 045 484040  
 Fax: (+353) 045 484004  
 Email: info@murphysurveys.ie

**Client:** BOC Gases Ireland

**Project:** BOC Gases Ireland at Unit 10 JFK Drive

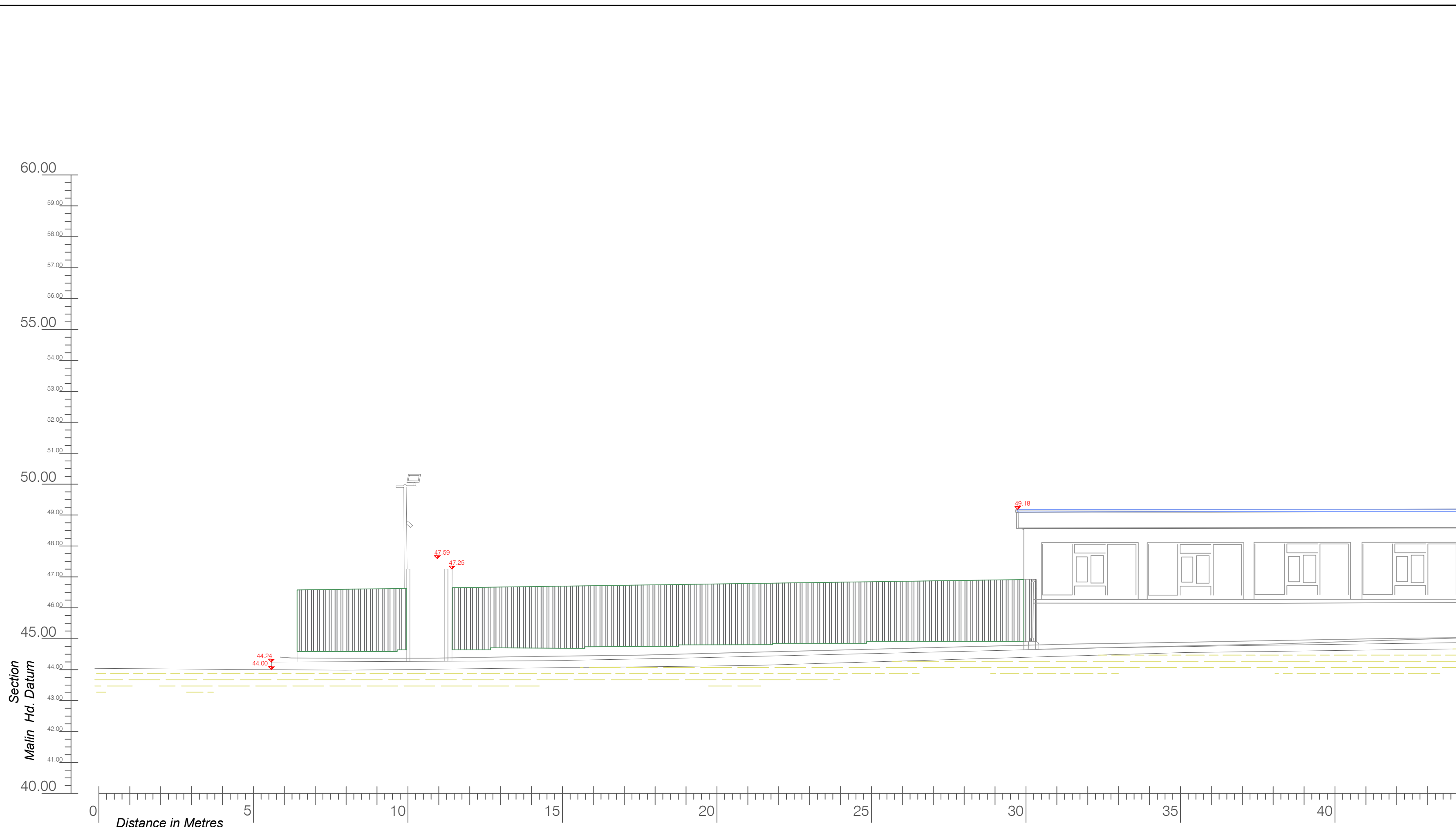
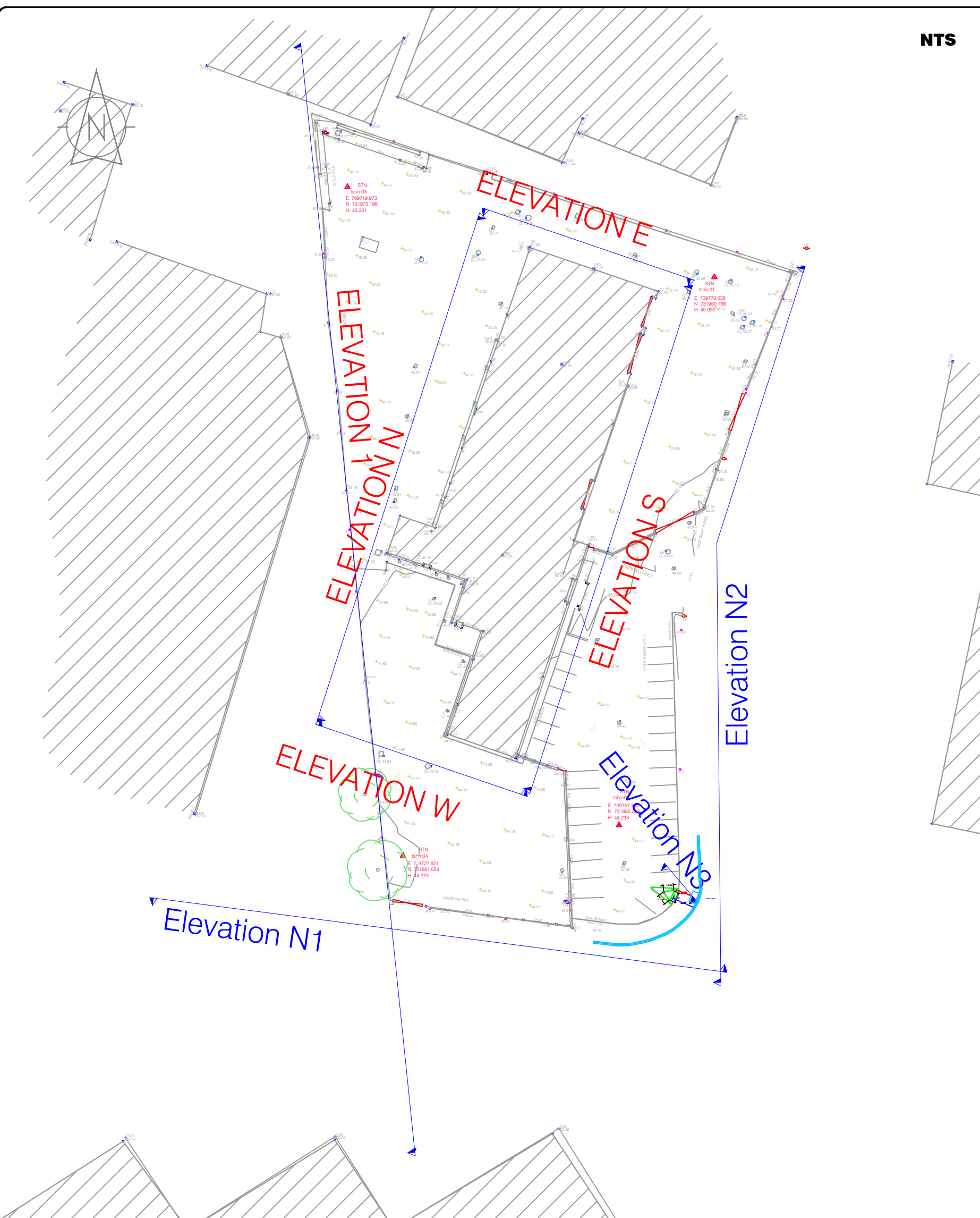
**Date:** 16.03.2022 **Scale:** 1:50@A1

**Description:** Proposed Elevations

**Drawing Number:** MGS39042\_EL\_Rev7\_3

Copyright 2022 MURPHY GEOSPATIAL LTD





**LEGEND**  
Street furniture & Services

Over Head Wires (LUAS) - Pylon ESB	Bus Stop	Road Signs	Phone Box
Flowerbed	Ballast	Bench Seat	Dust
Pipe	Beacon	Kiosk	Gas Cover
Lift	Coastline Cover	Gully	CPS/W
Barrier	Bore Hole	Waste Bin	US Car Park Vent
Pump	Electricity Pole	Hydrant	Fire Hydrant
Manhole	Telegraph pole	ESB Box	ESB Inspection Cover
Postbox	OCS Pole	ESB Box	ESB Inspection Cover
Water - General	CCTV Camera Pole	ESB Inspection Cover	ESB Inspection Cover
Water Valve	Lamp Post	ESB Inspection Cover	ESB Inspection Cover
Gas Valve	Fault Manhole	ESB Inspection Cover	ESB Inspection Cover
Sluice Valve	Surface Water MH	ESB Inspection Cover	ESB Inspection Cover
Air Valve	Manholes	ESB Inspection Cover	ESB Inspection Cover
Stop Cook	Air Conditioning Vents	ESB Inspection Cover	ESB Inspection Cover
C/P Post	Services Inspection Cover	ESB Inspection Cover	ESB Inspection Cover
Marker Post	Traffic Inspection Cover	ESB Inspection Cover	ESB Inspection Cover
Traffic Light	Cable TV Inspection Cover	ESB Inspection Cover	ESB Inspection Cover
Parking Meter	ESAT Inspection Cover	ESB Inspection Cover	ESB Inspection Cover
Flare Area Mark	NL Inspection Cover	ESB Inspection Cover	ESB Inspection Cover
Smart Card Validator	EScom Inspection Cover	ESB Inspection Cover	ESB Inspection Cover
Unknown Valve	Rodding Eye	ESB Inspection Cover	ESB Inspection Cover

**Natural Features**

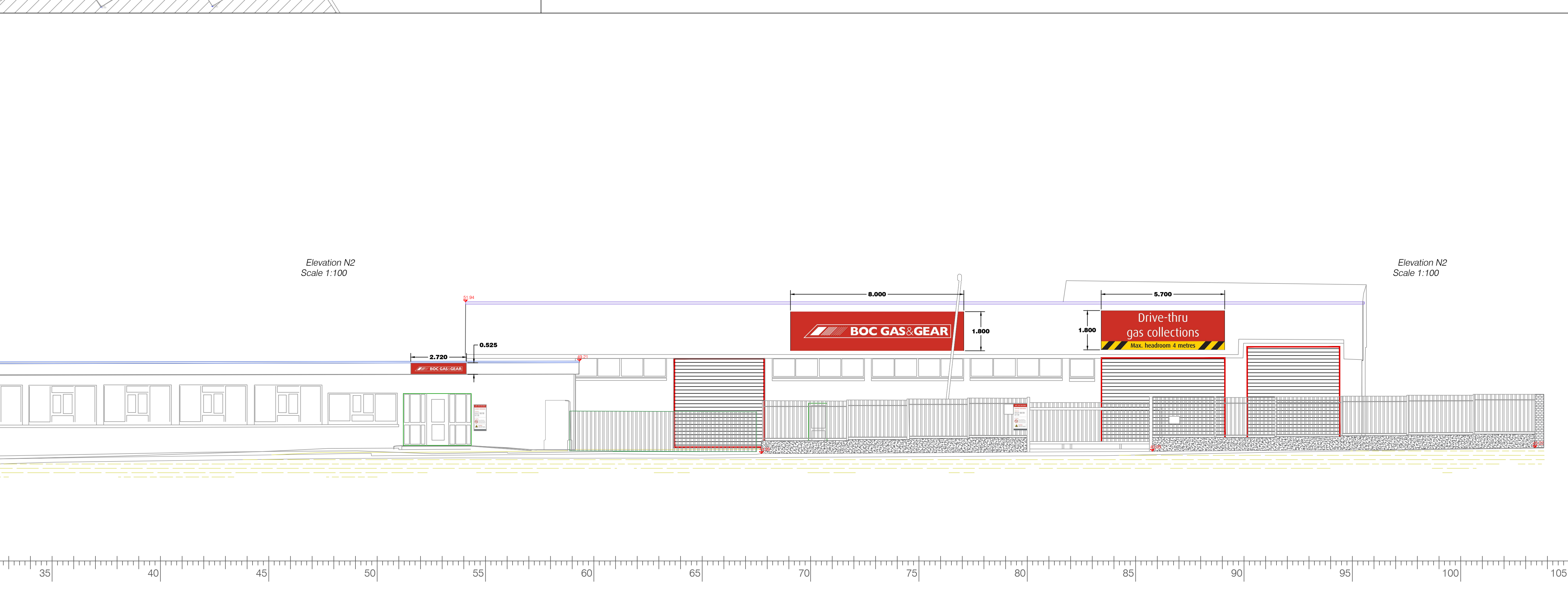
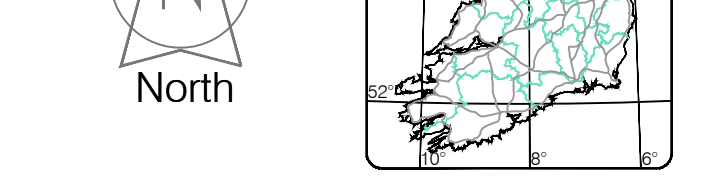
Surface Change	Water Level	Golf
Land Drain	Crown Level	Fair Way
Bottom of Slope	Invert Level	Green
Top of Slope	Bed Level	Tee Box
Ditch	Spotheight	Other
Water Edge / Lake / Pond		Survey Station
Hedge / Trees Drip Line / Vegetation		Photo point
Tree Coniferous	Tree Deciduous	Top of Tree

**Built Features**  
Roads & Road Markings

Building	Fence	Floor Level
Edge of Road	Gate	Apex Height
Kerb Bottom	Road Centreline	Eaves Height
Kerb Top	Top of Wall	Parapet Height
Bridge Abutment	Hoarding	Soft Elevation
Bridge Deck	Property Line	Slope Level
Bridge Parapet	Road Slew	Concrete Pad
Building Facade	Top of Fence	Track
Footpath / Platform Train & Tram	Wall / Retaining Wall	
Damp Proof Course / Vene	Railway / Tram Rail / Grating / Ramp	
Bridge Pier / Wall & Gate Pile / LUAS Trackbed	Building Canopy / Roof / Overhang	
Cycleway / Private Landing Area		

**Murphy Surveys Ltd. Disclaimer**  
The user or recipient of this survey data understands and acknowledges this data may be inaccurate or contain errors or omissions and the user or recipient assumes full responsibility for any risks or damages resulting from, arising from, or in connection with any use of or reliance upon data displayed herein. Although significant care has been exercised to produce surveys that satisfy survey accuracy standards, these surveys are only as accurate as the source data from which they were completed. Although all reasonable steps have been taken to locate all features visible at the time of the survey, there is no guarantee that all will be shown on the drawing, as some above ground features may have obstructed the survey. Wherever possible, areas unable to be surveyed will be labelled as "UTS".

The Client must promptly notify the Company of any errors in mapping of which it becomes aware. If misleading, inaccurate or otherwise inappropriate information is brought to the Company's attention or the Company itself identifies any such imprecision or error in a survey, it shall use its reasonable endeavours to fix or remove it and if necessary in certain instances, the Company being on notice of any such misleading, inaccurate or otherwise inappropriate information, it will re-conduct the survey and reproduce the data to within the specified scale or accuracy.



Map Sheet Layout

Drawn by: HM	Date: 24.06.2020	Datum: Main Head
Checked by: CDR	Date: 16.03.2022	Grid System: Irish National Grid
Checked by: PK	Date: 16.03.2022	Irish National Grid: ITM19D

No.	Date	Description	Revisors
0	08.2020	Field Drawing	
1	16.03.2022	Details added, Elevations added	
2	11.11.2022	Signage Foundation Update	
3	29.11.2022	Column Illumination & Layout Update	
4	03.02.2023	Removal of 2 omitted signs to front panel	



**Murphy GEOSPATIAL**  
Topographic surveys, Measured Building Surveys, Setting Out, As-Built Surveys, Hydrographic Surveys, Legal Mapping, Pipeline Surveys, Services Location, Ground Penetrating Radar, Drone, Remote Sensing and Photogrammetry

**Kildare Cork Dublin Belfast Glasgow Manchester London**  
Head Office  
Global House  
Kilcullen Business Campus  
Kilcullen Co. Kildare  
Ireland  
Phone: (+353) 045 484040  
Fax: (+353) 045 484004  
Email: info@murphysurveys.ie

**Client:** BOC Gases Ireland  
**Project:** BOC Gases Ireland at Unit 10 JFK Drive  
**Date:** 16.03.2022 **Scale:** As shown@A1  
**Description:** Proposed Elevations  
**Drawing Number:** MGS39042\_EL\_Rev4\_7  
Copyright 2022 MURPHY GEOSPATIAL LTD



